

PM 892

1108, 1508 ISMP8

CUTTING HEAD

PARTS MANUAL

IMPORTANT

NOTE HERE THE SERIAL NUMBER OF YOUR MACHINE AND ALWAYS QUOTE IT IN ANY COMMUNICATION WITH US OR YOUR DEALER. THIS IS PARTICULARLY IMPORTANT WHEN ORDERING SPARES. REMEMBER TO INCLUDE ALL NUMBERS AND LETTERS.

MACHINE SERIAL NUMBERS _____

THE INFORMATION GIVEN THROUGHOUT THIS MANUAL IS CORRECT AT THE TIME OF PUBLICATION. HOWEVER, IN THE COURSE OF CONSTANT DEVELOPMENT OF BOMFORD TURNER MACHINES, CHANGES IN SPECIFICATION ARE INEVITABLE. SHOULD YOU FIND THE INFORMATION GIVEN IN THIS BOOK TO BE AT VARIANCE WITH THE MACHINE IN YOUR POSSESSION, YOU ARE ADVISED TO CONTACT THE BOMFORD TURNER SERVICE DEPARTMENT WHERE UP-TO-DATE INFORMATION WILL BE PROVIDED.

THE MANUAL CAN CONTAIN STANDARD AND OPTIONAL FEATURES AND IS NOT TO BE USED AS A MACHINE SPECIFICATION.

THE MACHINE HAS BEEN TESTED AND IS CONSIDERED SAFE IF CAREFULLY USED. ENSURE YOUR OPERATOR IS PROPERLY TRAINED IN ITS USE AND MAINTENANCE.

IMPORTANT

NOTEZ ICI LES NUMEROS DE SERIE DE VOTRE MACHINE ET MENTIONNEZ LES DANS TOUTE COMMUNICATION AVEC NOS SERVICES OU VOTRE REVENDEUR. CECI EST IMPORTANT POUR LA COMMANDE DE PIECES DETACHEES. PENSEZ A NOTER TOUS LES NUMEROS ET TOUTES LES LETTERS.

NUMEROS DE SERIE DE LA MACHINE _____

LES INFORMATIONS DONNEES DANS CE MANUEL SONT CORRECTES CEPENDANT, DU FAIT DE DEVELOPPEMENT CONSTANT DES MACHINES BOMFORD TURNER.

CHANGEMENTS DANS LES CARACTERISTIQUES SONT INEVITABLES.

SI VOUS TROUVEZ QUE LES INFORMATIONS DONNEES NE CORRESPONDENT PAS A VOTRE MACHINE VEUILLEZ CONTACTER LE SERVICE DES REPARATIONS OU DES INFORMATIONS PLUS RECENTES VOUS SERONT DONNEES. CE MANUEL PEUT MONTRER DES CARACTERISTIQUES OPTIONNELLES ET NE PEUT PAS ETRE CONSIDERE COMME SPECIFICATION DE LA MACHINE.

CETTE MACHINE A ETE TESTEE, ET ELLE EST CONSIDEREE COMME FIABLE A CONDITION D'UNE BONNE UTILISATION. ASSUREZ-VOUS QUE VOTRE OPERATEUR EST QUALIFIE EN CE QUI CONCERNE L'UTILISATION DE LA MACHINE AINSI QUE SON ENTRETIEN.

WICHTIG

TRAGEN SIE HIER DIE SERIENNUMMERN IHRER MASCHINE EIN UND GEBEN SIE DIESE IMMER AN, WENN SIE SICH AN UNS ODER IHREN HÄNDLER WENDEN. DAS IST BESONDERS BEI ERSATZTEILBESTELLUNGEN WICHTIG. VERGESSEN SIE NICHT, ALLE ZAHLEN UND BUCHSTABEN ZU NOTIEREN.

SERIENNUMMERN DER MASCHINE _____

DIE ANGABEN IN DIESEM HANDBUCH SIND BEI VERÖFFENTLICHUNG KORREKT. AUFGRUND DER KONSTANTEN WEITERENTWICKLUNG VON BOMFORD TURNER MASCHINEN SIND JEDOCHÄNDERUGDEN IN DER SPEZIFIKATION UNVERMEIDLICH. WENN DIE INFORMATION IN DIESEM HANDBUCH NICHT MIT IHRER MASCHINE ÜBEREINSTIMMEN, NEHMEN SIE BITTE KONTAKT MIT DER BOMFORD TURNER KUNDENDIENSTABTEILUNG AUF, DIE IHNEN GERNE DIE AKTUELLEN INFORMATION ZUKOMMEN LÄSST.

DAS HANDBUCH KANN SOWOHL BESCHREIBUNGEN FÜR DIE STANDARD AUSFÜHRUNG ALS AUCH FÜR ZUBEHÖR ENTHALTEN UND IST NICHT ALS MASCHINENSPEZIFIKATION ZU VERWENDET.

DIE MASCHINE IST GETESTET UND BEI SACHGEMÄSSEM BETRIEB ALS SICHER BEFUNDEN WORDEN. SORGEN SIE DAFÜR, DASS IHR BEDIENPERSONAL IN ANWENDUNG UND WARTUNG RICHTIG GESCHULT WIRD.

INDEX

NOTE: PAGE & ILLUSTRATION NUMBERS SHOWN ARE USED ONLY FOR REFERENCE PURPOSES AND SHOULD NOT BE USED FOR ORDERING SPARE PARTS. PLEASE GIVE FULL PART NUMBER AND DESCRIPTION WHEN ORDERING SPARE PARTS.

FOR MACHINE WITH SERIAL NUMBERS COMMENCING FROM:

HEAD 1108 **1001 UA**
 HEAD 1508 **1066 UA**
 HEAD ISMP.8 **1086 UA**

PAGE NO.	TITLE	SCHEDULE NO.
2-1 to 2-2	COWL ASSEMBLY 1108 HEAD	71 039 02
	SKID ASSEMBLY	71 060 01
	ROLLER ASSEMBLY	71 050 01
3-1 to 3-3,	COWL ASSEMBLY 1508 HEAD	71 044 02
	SKID ASSEMBLY	71 049 01
	ROLLER ASSEMBLY	71 051 01
4-1 to 4-2	COWL ASSEMBLY ISMP.8 HEAD	71 045 02
	COWL ASSEMBLY ISMP.8 HEAD	71 058 01
	COWL ASSEMBLY ISMP.8 HEAD	71 059 02
	COWL ASSEMBLY ISMP.8 HEAD	71 067 01
	ROLLER ASSEMBLY	71 050 01
5-1 to 5-2	ROTOR SHAFT ASSEMBLY 1108 HEAD	71 074 01
	ROTOR SHAFT ASSEMBLY 1108 HEAD	71 075 01
	BEARING ASSEMBLY	71 076 01
6-1 to 6-2	ROTOR SHAFT ASSEMBLY 1508 HEAD	71 072 01
	ROTOR SHAFT ASSEMBLY 1508 HEAD	71 073 01
	BEARING ASSEMBLY	71 027 01
7-1 to 7-3,	ROTOR SHAFT ASSEMBLY ISMP.8 HEAD	71 068 01
	ROTOR SHAFT ASSEMBLY ISMP.8 HEAD	71 070 01
	ROTOR SHAFT ASSEMBLY ISMP.8 HEAD	71 071 01
	BEARING ASSEMBLY	71 078 01
8-1 to 8-2	MOTOR ASSEMBLY	71 053 01
	MOTOR ASSEMBLY	71 055 01
	MOTOR ASSEMBLY	71 057 01
9-1 to 9-2	DECALS	71 015 03
	DECALS	71 017 03
	DECALS	71 041 03

IMPORTANT

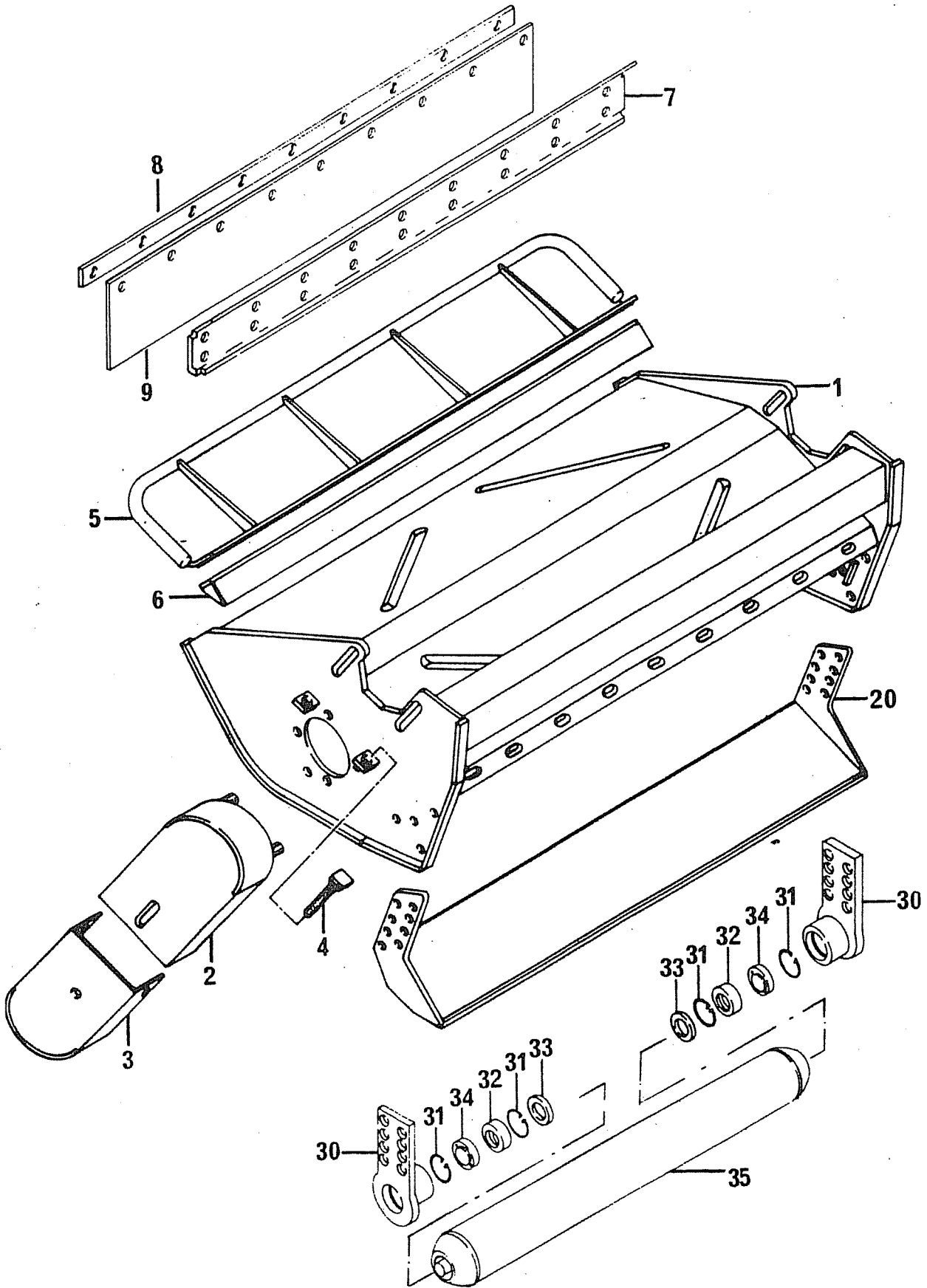
IT IS POTENTIALLY HAZARDOUS TO FIT OR USE ANY PARTS OTHER THAN GENUINE BOMFORD TURNER PARTS.

THE COMPANY DISCLAIMS ALL LIABILITY FOR THE CONSEQUENCES OF SUCH USE, WHICH IN ADDITION VOIDS THE MACHINE WARRANTY.

THIS MACHINE IS FOR VEGETATION CONTROL AND MUST NOT BE USED FOR ANY OTHER PURPOSE.

THE ILLUSTRATIONS AND TEXT COMBINE STANDARD, ALTERNATIVE AND OPTIONAL PARTS AND AND MUST NOT BE USED AS A PRODUCT SPECIFICATION.

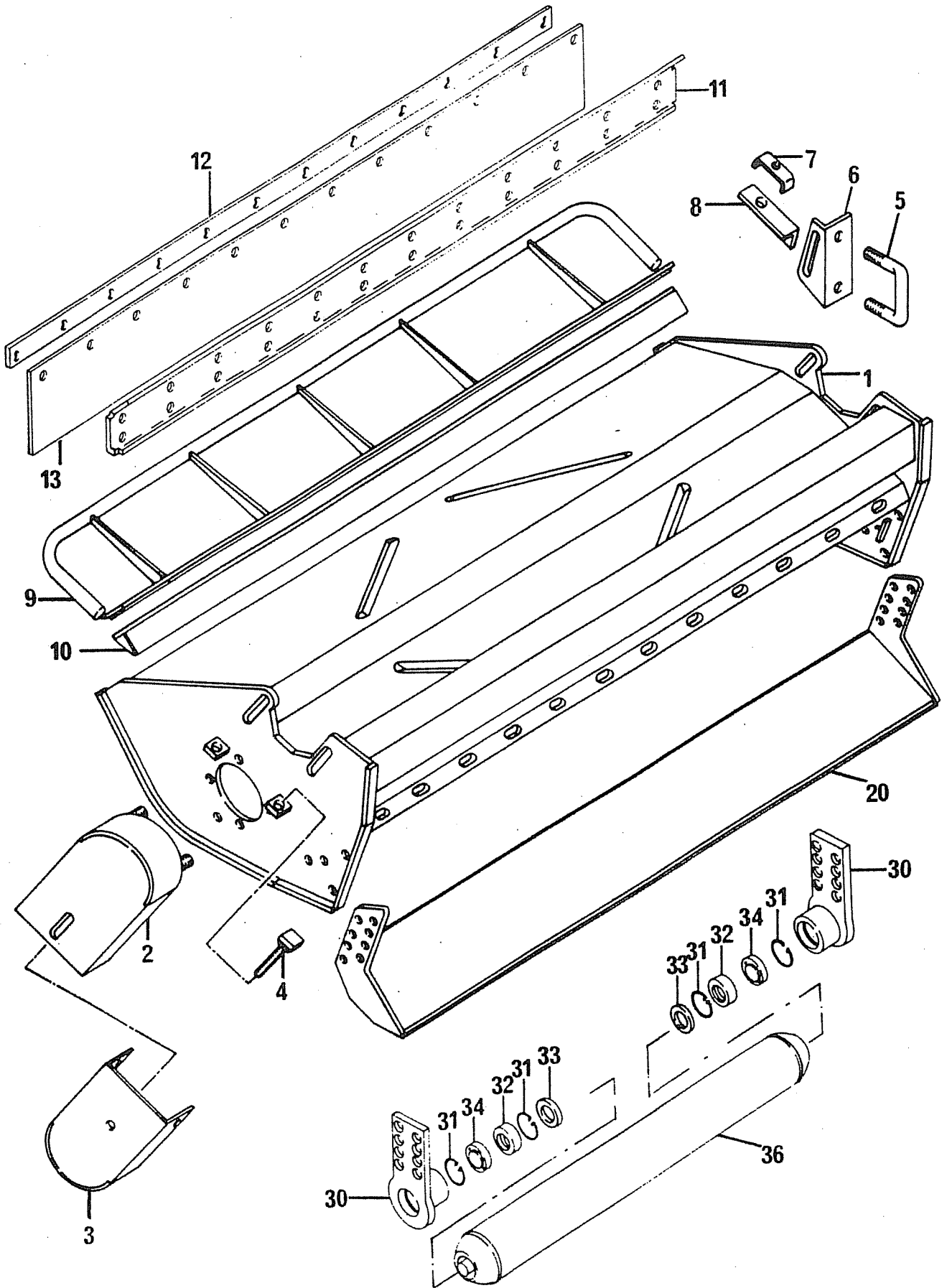
CHECK REAR OF MANUAL FOR UPDATES



1108 HEAD

REF	PART NO.	DESCRIPTION	QTY	SERIAL NO FROM - TO
<u>COWL ASSEMBLY</u>				71.039.02
*01	04.150.01	COWL 1100MM	1	
01	05.227.01	HAMMER DRIVE SCREW NO.6 X 1/2"	2	
01	05.774.01	SERIAL NUMBER PLATE	1	
*02	04.153.01	GUARD - DRIVE BELT (TOP)	1	
02	05.281.03	FLAT WASHER 12MM PLATED	2	
02	05.282.03	SPRING WASHER 12MM PLATED	2	
02	05.286.03	NUT M12 PLATED	2	
*03	04.154.01	GUARD - DRIVE BELT (BTM)	1	
03	05.264.22	SETSCREW M12 X 25MM PLATED	1	
03	05.281.03	FLAT WASHER 12MM PLATED	1	
03	05.282.03	SPRING WASHER 12MM PLATED	2	
03	05.286.03	NUT M12 PLATED	1	
*04	04.155.01	SPECIAL BOLT M12 X 110	2	
04	05.286.03	NUT M12 PLATED	4	
*05	03.767.04	GUARD-FRONT 1100MM	1	
05	05.264.13	SETSCREW M10 X 30MM PLATED	2	
05	05.264.15	SETSCREW M10 X 40MM PLATED	4	
05	05.281.02	FLAT WASHER 10MM PLATED	10	
05	05.282.02	SPRING WASHER 10MM PLATED	4	
05	05.286.02	NUT M10 PLATED	4	
05	05.287.02	SELF-LOCKING NUT M10 PLATED	2	
*06	03.768.01	BRACKET-WIRE CUTTER 1100MM	1	
*07	06.901.01	GUARD ANGLE	1	
*08	00.883.02	BACKING STRIP	1	
08	05.264.01	SETSCREW M8 X 20MM PLATED	2	
08	05.286.01	NUT M8 PLATED	2	
08	05.287.01	SELF-LOCKING NUT M8 PLATED	9	
08	05.291.01	BOLT M8 X 30MM PLATED	9	
*09	00.875.05	GUARD - PLASTIC	1	
<u>SKID ASSEMBLY</u>				71.060.01
*20	06.050.01	SKID - 1100MM COWL	1	
<u>ROLLER ASSEMBLY</u>				71.050.01
*30	04.387.01	BRACKET - ROLLER	2	
30	05.264.25	SETSCREW M12 X 40MM PLATED	4	
30	05.282.03	SPRING WASHER 12MM PLATED	4	
30	05.287.03	SELF-LOCKING NUT M12 PLATED	4	
*31	05.959.05	CIRCLIP - INT 62MM DIA	4	
*32	03.007.02	BEARING - BALL 30MM BORE	2	
*33	04.164.04	SEAL-LIP 40DIA X 10MM	2	
*34	04.394.01	FLANGE-BEARING RETAINER	2	
34	05.953.01	GREASE NIPPLE M6	4	
*35	04.388.01	ROLLER 114DIA X 1100MM	1	
35	05.234.01	WASHER 1.3/4" X 17/32" X 3/16"	2	
35	05.264.23	SETSCREW M12 X 30MM PLATED	2	
35	05.282.03	SPRING WASHER 12MM PLATED	2	
35	06.183.01	ROLLER PROD. ASSY	-	(INC. REF 30-35)

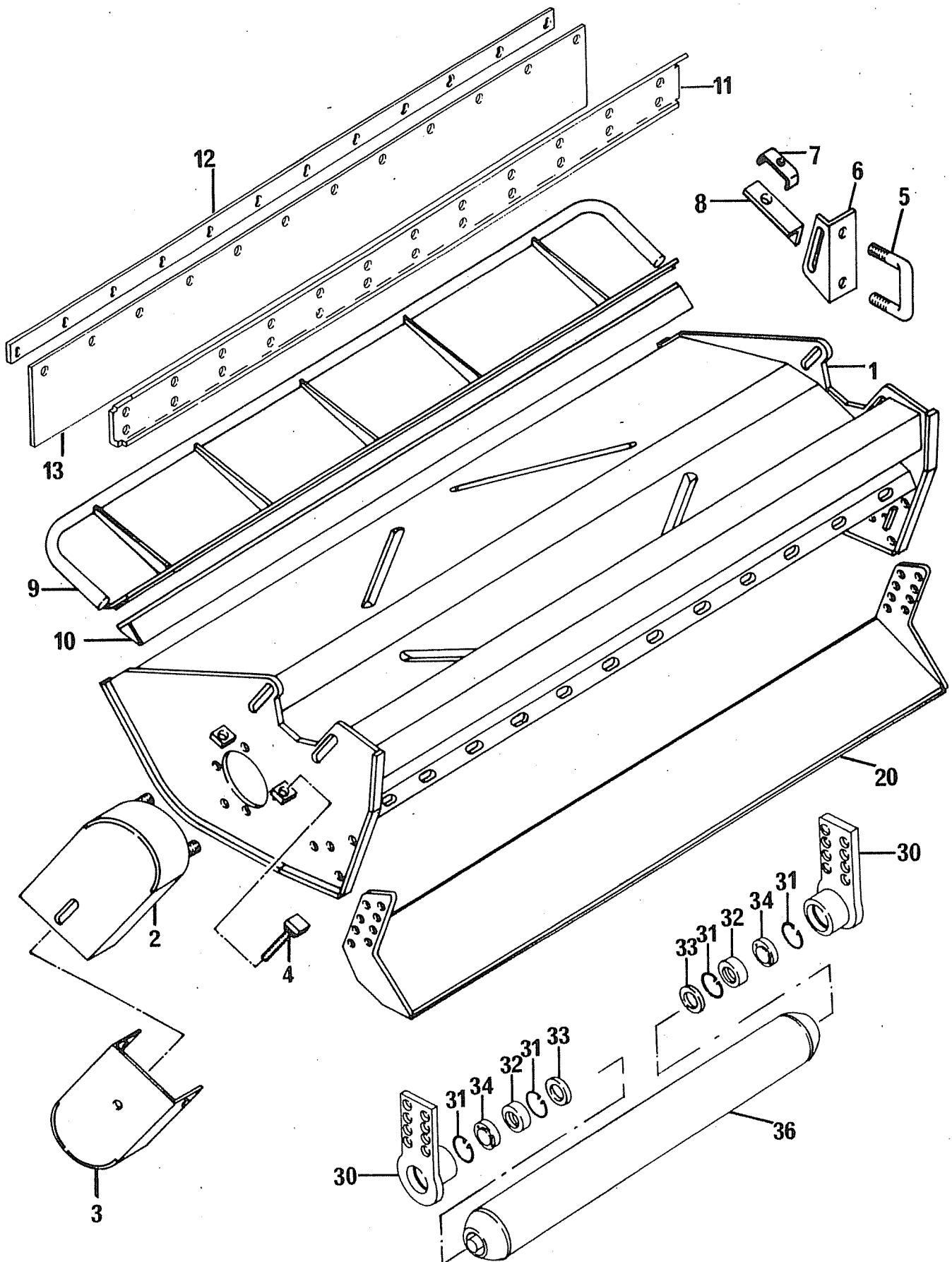
* MAIN PART IN GROUP, RELATED PARTS HAVE SAME REFERENCE NUMBER



1508 HEAD

REF	PART NO.	DESCRIPTION	QTY	SERIAL NO FROM - TO
<u>COWL ASSEMBLY</u>				71.044.02
*01	04.150.02	COWL 1500MM	1	
01	05.227.01	HAMMER DRIVE SCREW NO.6 X 1/2"	2	
01	05.774.01	SERIAL NUMBER PLATE	1	
*02	04.153.01	GUARD - DRIVE BELT (TOP)	1	
02	05.281.03	FLAT WASHER 12MM PLATED	2	
02	05.282.03	SPRING WASHER 12MM PLATED	2	
02	05.286.03	NUT M12 PLATED	2	
*03	04.154.01	GUARD - DRIVE BELT (BTM)	1	
03	05.264.22	SETSCREW M12 X 25MM PLATED	1	
03	05.281.03	FLAT WASHER 12MM PLATED	1	
03	05.282.03	SPRING WASHER 12MM PLATED	2	
03	05.286.03	NUT M12 PLATED	1	
*04	04.155.01	SPECIAL BOLT M12 X 110	2	
04	05.286.03	NUT M12 PLATED	4	
*05	04.258.01	"U" BOLT M10	1	
05	05.282.02	SPRING WASHER 10MM PLATED	2	
05	05.286.02	NUT M10 PLATED	2	
*06	04.256.01	BRACKET-HOSE CLAMP	1	
06	05.264.12	SETSCREW M10 X 25MM PLATED	1	
06	05.281.02	FLAT WASHER 10MM PLATED	1	
06	05.282.02	SPRING WASHER 10MM PLATED	1	
06	05.286.02	NUT M10 PLATED	1	
*07	04.257.01	HOSE CLAMP	1	
07	05.282.02	SPRING WASHER 10MM PLATED	1	
07	05.286.02	NUT M10 PLATED	1	
07	05.291.14	BOLT M10 X 45MM PLATED	1	
*08	04.259.01	BRACKET-HOSE CLAMP	1	
*09	03.767.05	GUARD-FRONT 1500MM	1	
09	05.264.13	SETSCREW M10 X 30MM PLATED	2	
09	05.264.15	SETSCREW M10 X 40MM PLATED	5	
09	05.281.02	FLAT WASHER 10MM PLATED	12	
09	05.282.02	SPRING WASHER 10MM PLATED	5	
09	05.286.02	NUT M10 PLATED	5	
09	05.287.02	SELF-LOCKING NUT M10 PLATED	2	
*10	03.768.03	BRACKET-WIRE CUTTER 1500MM	1	
*11	06.901.02	BRACKET-GUARD (ANGLE)	1	
11	05.264.01	SETSCREW M8 X 20MM PLATED	2	
11	05.286.01	NUT M8 PLATED	2	
*12	04.159.01	BACKING STRIP	1	
12	05.287.01	SELF-LOCKING NUT M8 PLATED	12	
12	05.291.01	BOLT M8 X 30MM PLATED	12	
*13	04.158.01	GUARD - PLASTIC	1	
<u>SKID ASSEMBLY</u>				71.049.01
*20	06.050.02	SKID - 1500MM COWL	1	

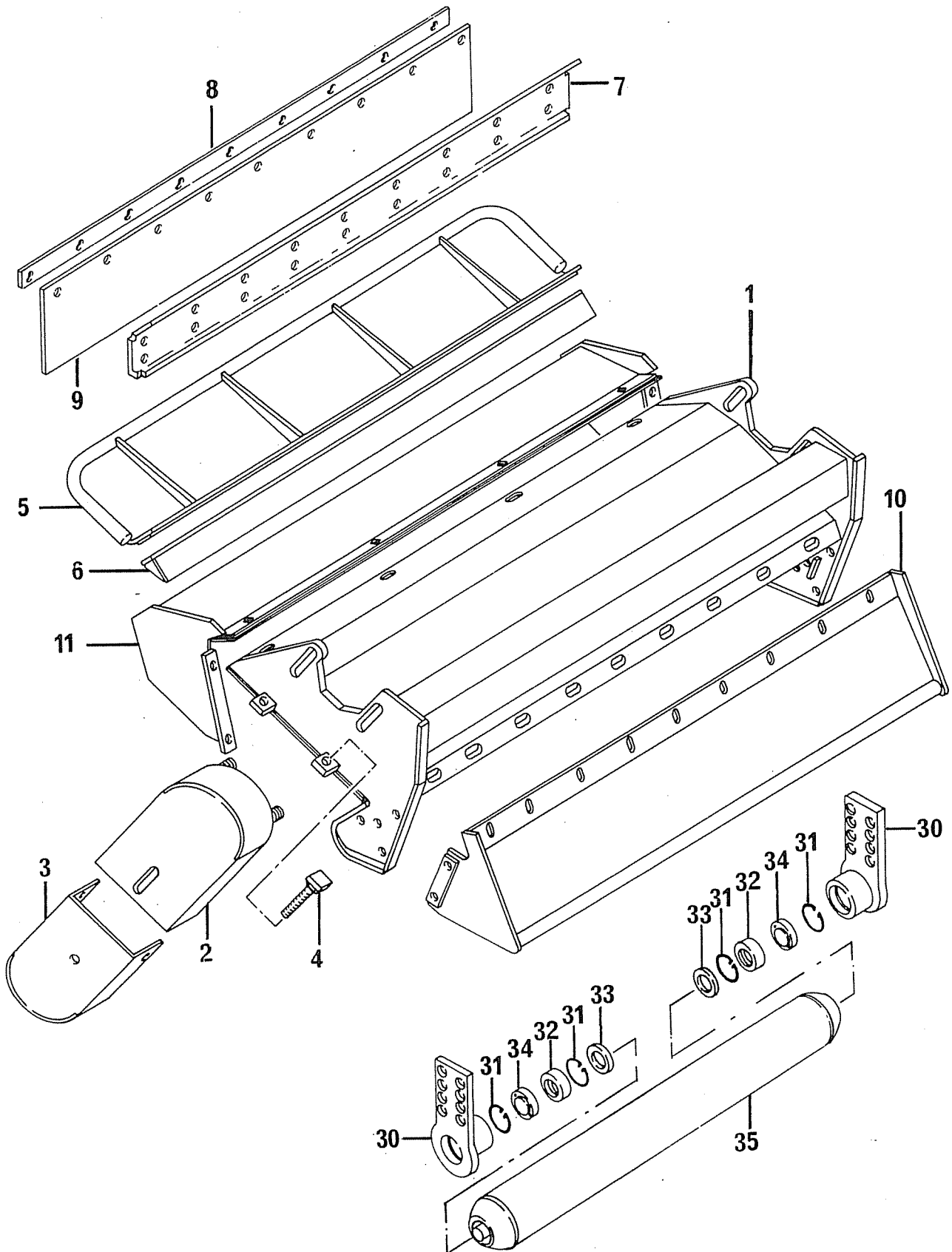
* MAIN PART IN GROUP, RELATED PARTS HAVE SAME REFERENCE NUMBER



1508 HEAD

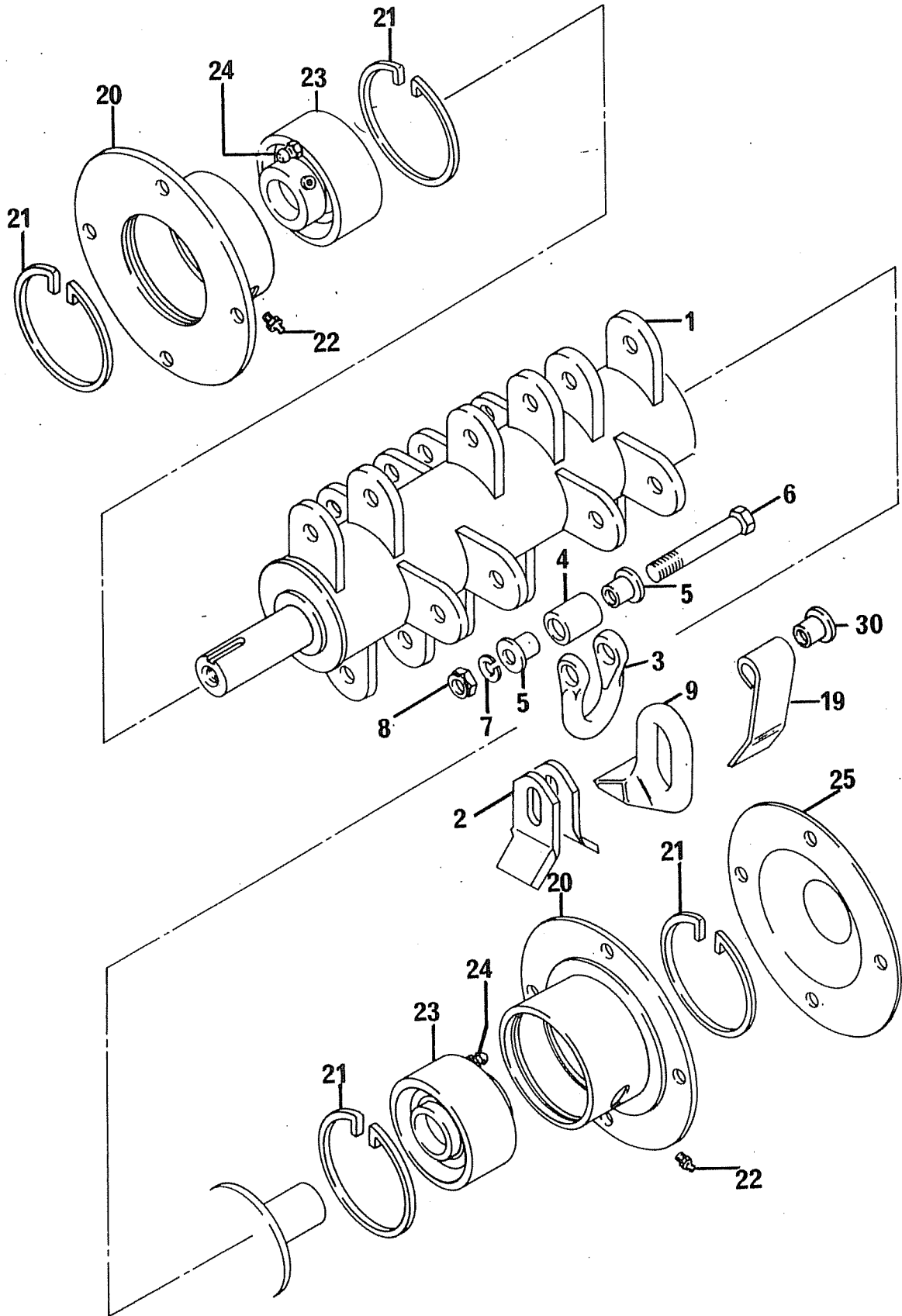
REF	PART NO.	DESCRIPTION	QTY	SERIAL NO FROM - TO
<u>ROLLER ASSEMBLY</u>				71.051.01
*30	04.387.01	BRACKET - ROLLER	2	
30	05.264.25	SETSCREW M12 X 40MM PLATED	4	
30	05.282.03	SPRING WASHER 12MM PLATED	4	
30	05.287.03	SELF-LOCKING NUT M12 PLATED	4	
*31	05.959.05	CIRCLIP - INT 62MM DIA	4	
*32	03.007.02	BEARING - BALL 30MM BORE	2	
*33	04.164.04	SEAL-LIP 40DIA X 10MM	2	
*34	04.394.01	FLANGE-BEARING RETAINER	2	
34	05.953.01	GREASE NIPPLE M6	4	
*36	04.388.02	ROLLER 114DIA X 1500MM	1	
36	05.234.01	WASHER 1.3/4" X 17/32" X 3/16"	2	
36	05.264.23	SETSCREW M12 X 30MM PLATED	2	
36	05.282.03	SPRING WASHER 12MM PLATED	2	
36	06.183.02	ROLLER PROD. ASSY	-	(INC. REF 30-36)

* MAIN PART IN GROUP, RELATED PARTS HAVE SAME REFERENCE NUMBER



REF	PART NO.	DESCRIPTION	QTY	SERIAL NO. FROM - TO
71.045.02, 71.058.01		<u>COWL ASSEMBLY</u>		
71.059.02, 71.067.01				
*01	04.247.01	COWL-1100MM ISMP	1	-4000WA
*01	04.247.02	COWL-1100MM ISMP	1	4033WA-
01	05.227.01	HAMMER DRIVE SCREW NO.6 X 1/2"	2	
01	05.774.01	SERIAL NUMBER PLATE	1	
*02	04.153.01	GUARD - DRIVE BELT (TOP)	1	
02	05.281.03	FLAT WASHER 12MM PLATED	2	
02	05.282.03	SPRING WASHER 12MM PLATED	2	
02	05.286.03	NUT M12 PLATED	2	
*03	04.249.01	GUARD - BELT DRIVE(BTM)	1	
03	05.264.22	SETSCREW M12 X 25MM PLATED	1	
03	05.281.03	FLAT WASHER 12MM PLATED	1	
03	05.282.03	SPRING WASHER 12MM PLATED	2	
03	05.286.03	NUT M12 PLATED	1	
*04	04.155.01	SPECIAL BOLT M12 X 110	2	
04	05.286.03	NUT M12 PLATED	4	
*05	03.767.04	GUARD-FRONT 1100MM	1	
05	05.264.13	SETSCREW M10 X 30MM PLATED	2	
05	05.281.02	FLAT WASHER 10MM PLATED	4	
05	05.287.02	SELF-LOCKING NUT M10 PLATED	2	
*06	03.768.01	BRACKET-WIRE CUTTER 1100MM	1	
*07	06.901.01	GUARD ANGLE	1	
*08	00.883.02	BACKING STRIP	1	
08	05.287.01	SELF-LOCKING NUT M8 PLATED	9	
08	05.291.01	BOLT M8 X 30MM PLATED	9	
*09	00.875.05	GUARD - PLASTIC	1	
*10	04.250.01	GUARD - REAR	1	
10	05.264.13	SETSCREW M10 X 30MM PLATED	9	
10	05.264.23	SETSCREW M12 X 30MM PLATED	4	
10	05.281.02	FLAT WASHER 10MM PLATED	18	
10	05.282.03	SPRING WASHER 12MM PLATED	4	
10	05.286.03	NUT M12 PLATED	4	
10	05.287.02	SELF-LOCKING NUT M10 PLATED	9	
*11	04.261.01	GUARD-FRONT HOOD	1	
11	05.264.14	SETSCREW M10 X 35MM PLATED	8	
11	05.281.02	FLAT WASHER 10MM PLATED	8	
11	05.282.02	SPRING WASHER 10MM PLATED	8	
11	05.286.02	NUT M10 PLATED	8	
71.050.01		<u>ROLLER ASSEMBLY</u>		
*30	04.387.01	BRACKET - ROLLER	2	
30	05.264.25	SETSCREW M12 X 40MM PLATED	4	
30	05.282.03	SPRING WASHER 12MM PLATED	4	
30	05.287.03	SELF-LOCKING NUT M12 PLATED	4	
*31	05.959.05	CIRCLIP - INT 62MM DIA	4	
*32	03.007.02	BEARING - BALL 30MM BORE	2	
*33	04.164.04	SEAL-LIP 4ODIA X 10MM	2	
*34	04.394.01	FLANGE-BEARING RETAINER	2	
34	05.953.01	GREASE NIPPLE M6	4	
*35	04.388.02	ROLLER 114DIA X 1100MM	1	
35	05.234.01	WASHER 1.3/4" X 17/32" X 3/16"	2	
35	05.264.23	SETSCREW M12 X 30MM PLATED	2	
35	05.282.03	SPRING WASHER 12MM PLATED	2	
35	06.183.01	ROLLER PROD. ASSY	-	(INC.REF 30-35)

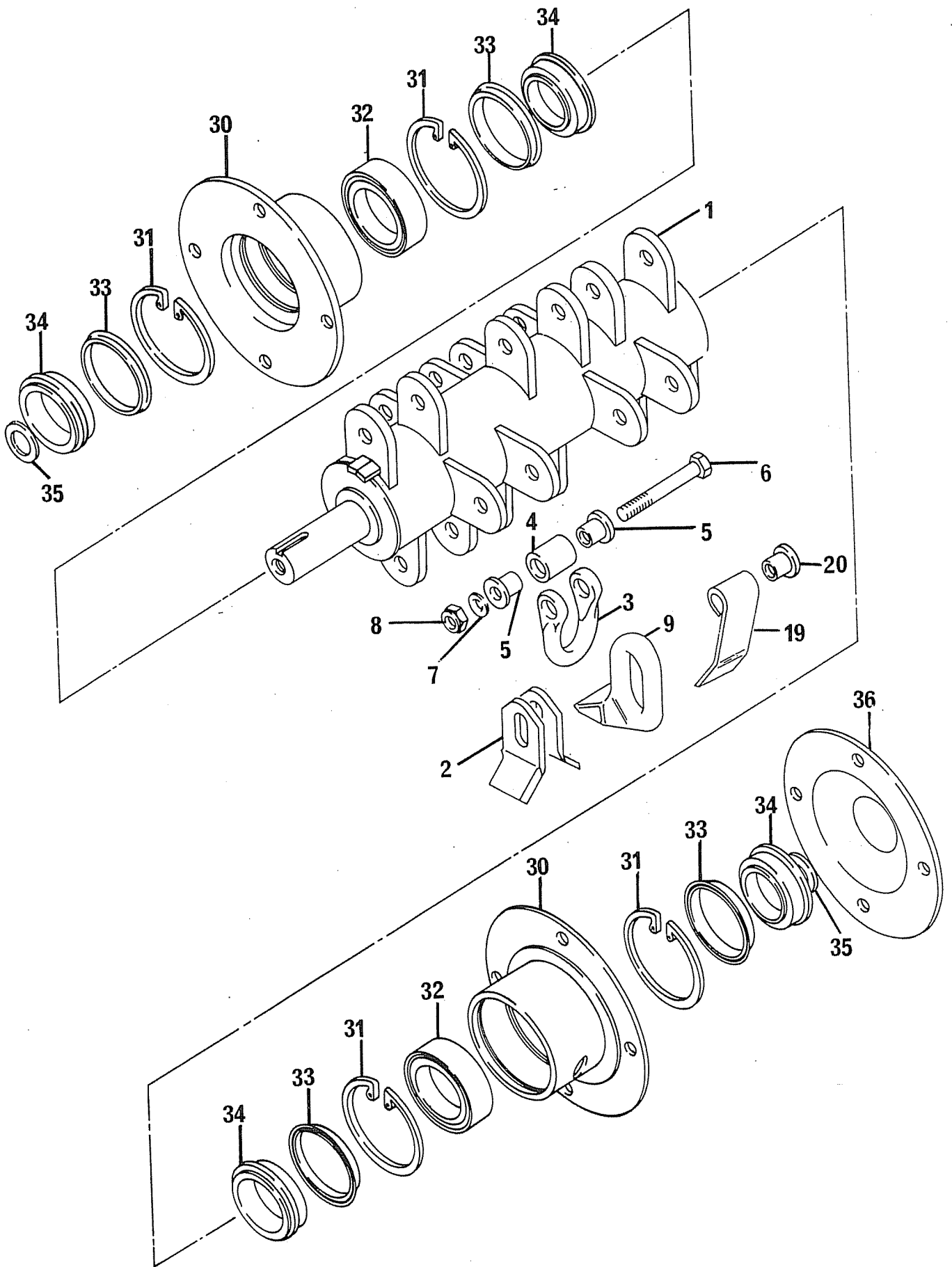
* MAIN PART IN GROUP, RELATED PARTS HAVE SAME REFERENCE NUMBER



ROTOR SHAFTS 1108 HEAD

REF	PART NO.	DESCRIPTION	QTY	SERIAL NO. FROM - TO
	02.913.06	ROTOR SHAFT ASSEMBLY COMPLETE COMRPISING ITEMS 01 TO 08		
	02.913.07	ROTOR SHAFT ASSEMBLY COMPLETE CLOCKWISE FLAIL ROTATION VIEWED FROM DRIVE END COMPRISING ITEMS 01, 03 TO 09		
	02.913.08	ROTOR SHAFT ASSEMBLY COMPLETE ANTI-CLOCKWISE FLAIL ROTATION VIEWED FROM DRIVE END COMPRISING ITEMS 01, 03 TO 09		
		<u>ROTOR SHAFT ASSEMBLY</u>	71.074.01, 71.075.01	
*01		ROTOR SHAFT 1133MM	1	
*02	02.812.01	FLAIL-FORMED 40 X 6	64	
*03	05.895.01	SHACKLE-FORGED	32	
*04	02.807.01	SPACER 1"O/D X 16MM I/D X 7MM	32	
*05	02.801.01	COLLAR 20 O/D X 26	64	
*06	05.775.02	BOLT M10 X 86MM (FINE)	32	
*07	05.282.02	SPRING WASHER 10MM PLATED	32	
*08	05.968.02	SELF LOCKING NUT M10 (FINE)	32	
*09	02.959.01	FLAIL - FORGED	32	
*19	06.189.01	FLAIL - FORMED 40 X 8	32	SPARES ONLY
*30	06.192.02	COLLAR 26 O/D X 21	64	" "
		<u>BEARING ASSEMBLY 1108 HEAD</u>		71.076.01
*20	00.865.02	BEARING HOUSING	2	
20	02.910.04	BEARING HOUSING PROD. ASSY	-	
20	05.264.23	SETSCREW M12 X 30MM PLATED	8	
20	05.282.03	SPRING WASHER 12MM PLATED	8	
20	05.286.03	NUT M12 PLATED	8	
*21	01.072.01	CIRCLIP - INT 4.1/16"D	4	
*22	05.953.01	GREASE NIPPLE M6	2	
*23	01.080.04	BEARING-CARTRIDGE 1.1/2"DIA	2	
23	05.234.01	WASHER 1.3/4" X 17/32" X 3/16"	2	
23	05.264.23	SETSCREW M12 X 30MM PLATED	2	
23	05.283.03	SHAKEPROOF WASHER 12MM PLATED	2	
*24	01.070.03	GREASE NIPPLE 1/4"UNF ST	2	
*25	00.876.02	BEARING COVER	1	

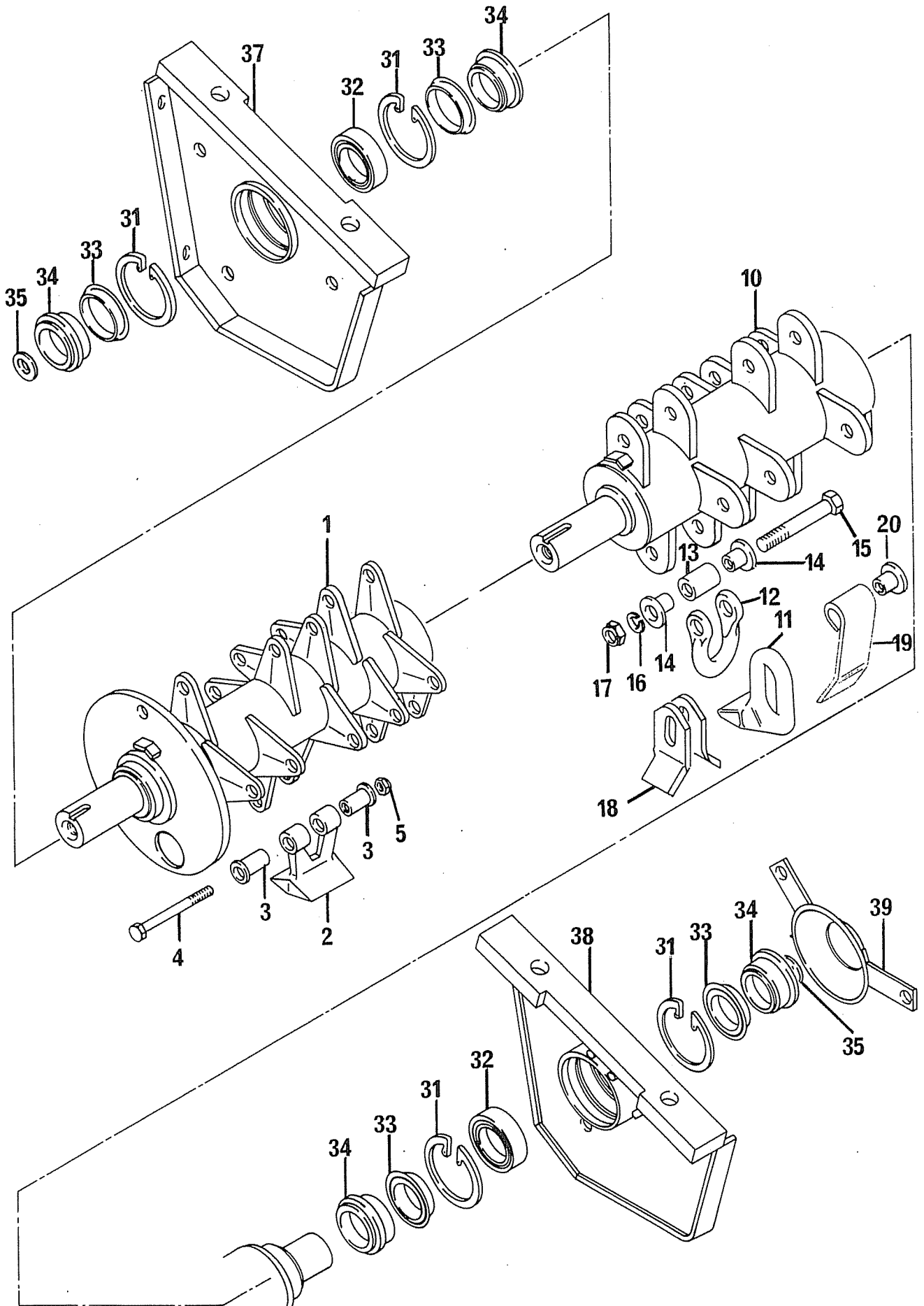
* MAIN PART IN GROUP, RELATED PARTS HAVE SAME REFERENCE NUMBER



ROTOR SHAFTS 1508 HEAD

REF	PART NO.	DESCRIPTION	QTY	SERIAL NO. FROM - TO
	04.519.01	ROTOR SHAFT ASSEMBLY COMPLETE COMPRISING ITEMS 01 TO 08		
	04.519.02	ROTOR SHAFT ASSEMBLY COMPLETE COMPRISING CLOCKWISE FLAIL ROTATION VIEWED FROM DRIVE END COMPRISING ITEMS 01, 03 TO 09		
		<u>ROTOR SHAFT ASSEMBLY</u>		71.072.01,71.073.01
*01		ROTOR SHAFT 1500MM	1	
*02	02.812.01	FLAIL-FORMED 40 X 6	88	
*03	05.895.01	SHACKLE-FORGED	44	
*04	02.807.01	SPACER 1"O/D X 16MM I/D X 7MM	44	
*05	02.801.01	COLLAR 20 O/D X 26	88	
*06	05.775.02	BOLT M10 X 86MM (FINE)	44	
*07	05.282.02	SPRING WASHER 10MM PLATED	44	
*08	05.968.02	SELF LOCKING NUT M10 (FINE)	44	
*09	02.959.01	FLAIL-FORGED	44	
*19	06.189.01	FLAIL-FORMED 40 x 8	44	SPARES ONLY
*20	06.192.02	COLLAR 26 O/D X 21	88	" "
		<u>BEARING ASSEMBLY 1508 HEAD</u>		71.077.01
*30	04.268.01	HOUSING-BEARING	2	
30	04.549.05	BEARING AND HOUSING PROD.ASSY	-	
30	05.264.23	SETSCREW M12 X 30MM PLATED	8	
30	05.282.03	SPRING WASHER 12MM PLATED	8	
30	05.286.03	NUT M12 PLATED	8	
30	05.953.03	GREASE NIPPLE M10	2	
*31	05.959.07	CIRCLIP - INT.85MM DIA	4	
*32	04.163.04	BEARING-SPH.ROLLER 45MM BORE	2	
*33	04.164.02	SEAL-LIP 70 DIA X 8MM	4)	1988
*34	04.251.01	COLLAR-SEAL 82 DIA X 17MM	4)	PRODUCTION
*35	04.252.01	WASHER 65 O/DX17 I/DX6MM	2	
35	05.264.33	SETSCREW M16 X 30MM PLATED	2	
35	05.283.04	SHAKEPROOF WASHER 16MM PLATED	2	
*36	00.876.02	BEARING COVER	1	
*33	06.909.01	SPACER-SEAL	4)	1989
*34	06.910.01	COLLAR-SEAL	4)	PRODUCTION

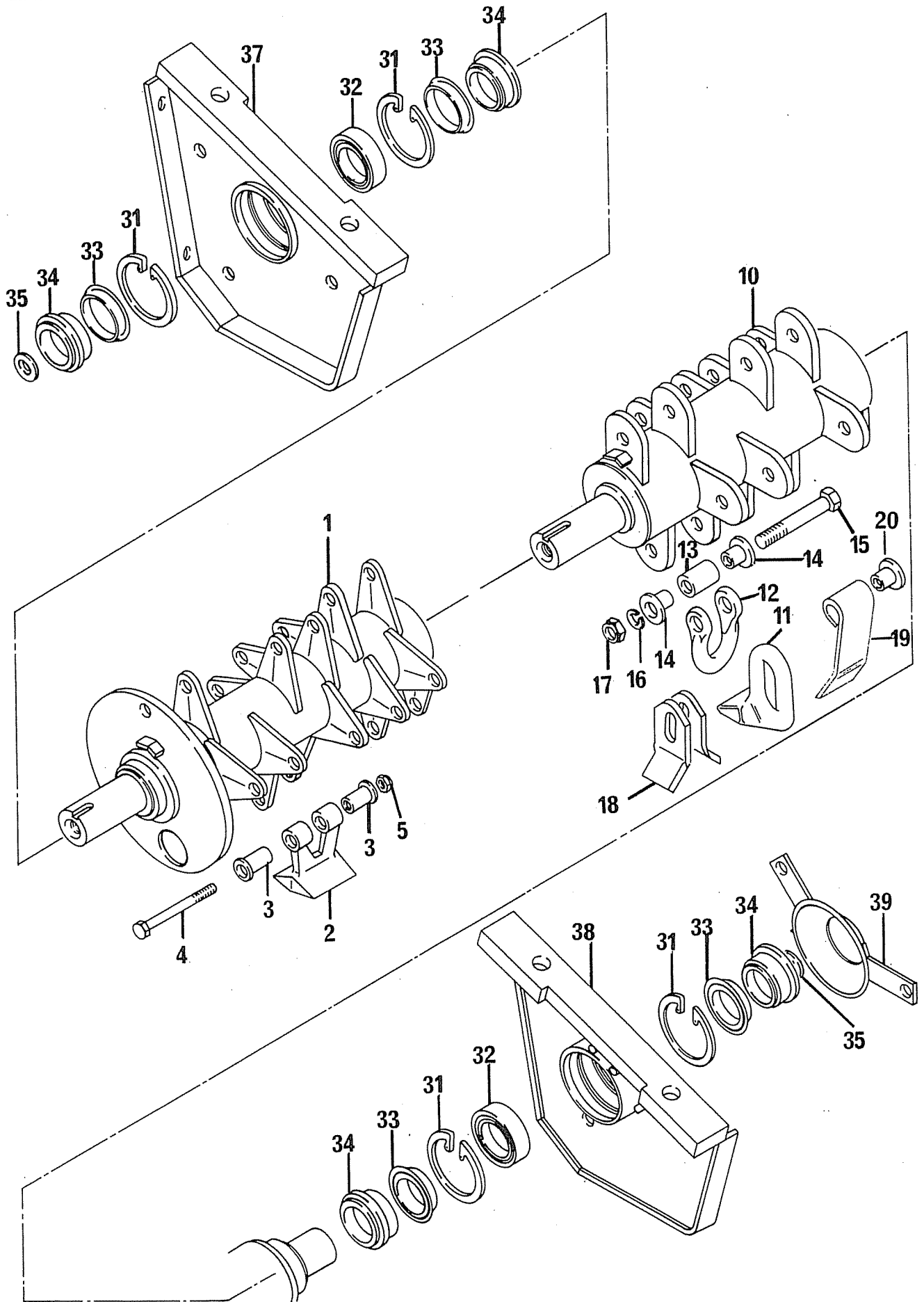
* MAIN PART IN GROUP, RELATED PARTS HAVE SAME REFERENCE NUMBER



ROTOR SHAFTS ISMP.8

REF	PART NO.	DESCRIPTION	QTY	SERIAL NO. FROM - TO
	04.551.01	ROTOR SHAFT ASSEMBLY COMPLETE CLOCKWISE FLAIL ROTATION VIEWED FROM DRIVE END COMPRISING ITEMS 10 TO 17		
	04.551.02	ROTOR SHAFT ASSEMBLY COMPLETE ANTI-CLOCKWISE FLAIL ROTATION VIEWED FROM DRIVE END COMPRISING ITEMS 10 TO 17		
	04.551.03	ROTOR SHAFT ASSEMBLY COMPLETE COMPRISING ITEMS 10, 12 TO 18		
	04.550.01	ROTOR SHAFT ASSEMBLY COMPLETE COMPRISING ITEMS 01 TO 05		
		<u>ROTOR SHAFT ASSEMBLY - BUSHMASTER</u>		71.068.01
*01		ROTOR SHAFT 1100MM BUSHMASTER	1	
*02	03.958.01	FLAIL-FORGED	24	
*03	03.437.01	COLLAR 30 O/D X 45	48	
*04	05.411.01	BOLT-1/2"UNF X 4.7/8"	24	
*05	05.295.04	S.LOCKING NUT 1/2"UNF PLATED	24	
		<u>ROTOR SHAFT ASSEMBLY- TUBULAR</u>		71.070.01, 71.071.01
*10		ROTOR SHAFT 1100MM	1	
*11	02.959.01	FLAIL - FORGED	32	
*12	05.895.01	SHACKLE-FORGED	32	
*13	02.807.01	SPACER 1"O/D X 16MM I/D X 7MM	32	
*14	02.801.01	COLLAR 20 O/D X 26	64	
*15	05.775.02	BOLT M10 X 86M (FINE))	32	
*16	05.282.02	SPRING WASHER 10MM PLATED	32	
*17	05.968.02	SELF LOCKING NUT M10 (FINE)	32	
*18	02.812.01	FLAIL-FORMED 40 X 6	64	
*19	06.189.01	FLAIL-FORMED 40 X 8	32	SPARES ONLY
*20	06.192.02	COLLAR 26 O/D X 21	64	" "

* MAIN PART IN GROUP, RELATED PARTS HAVE SAME REFERENCE NUMBER

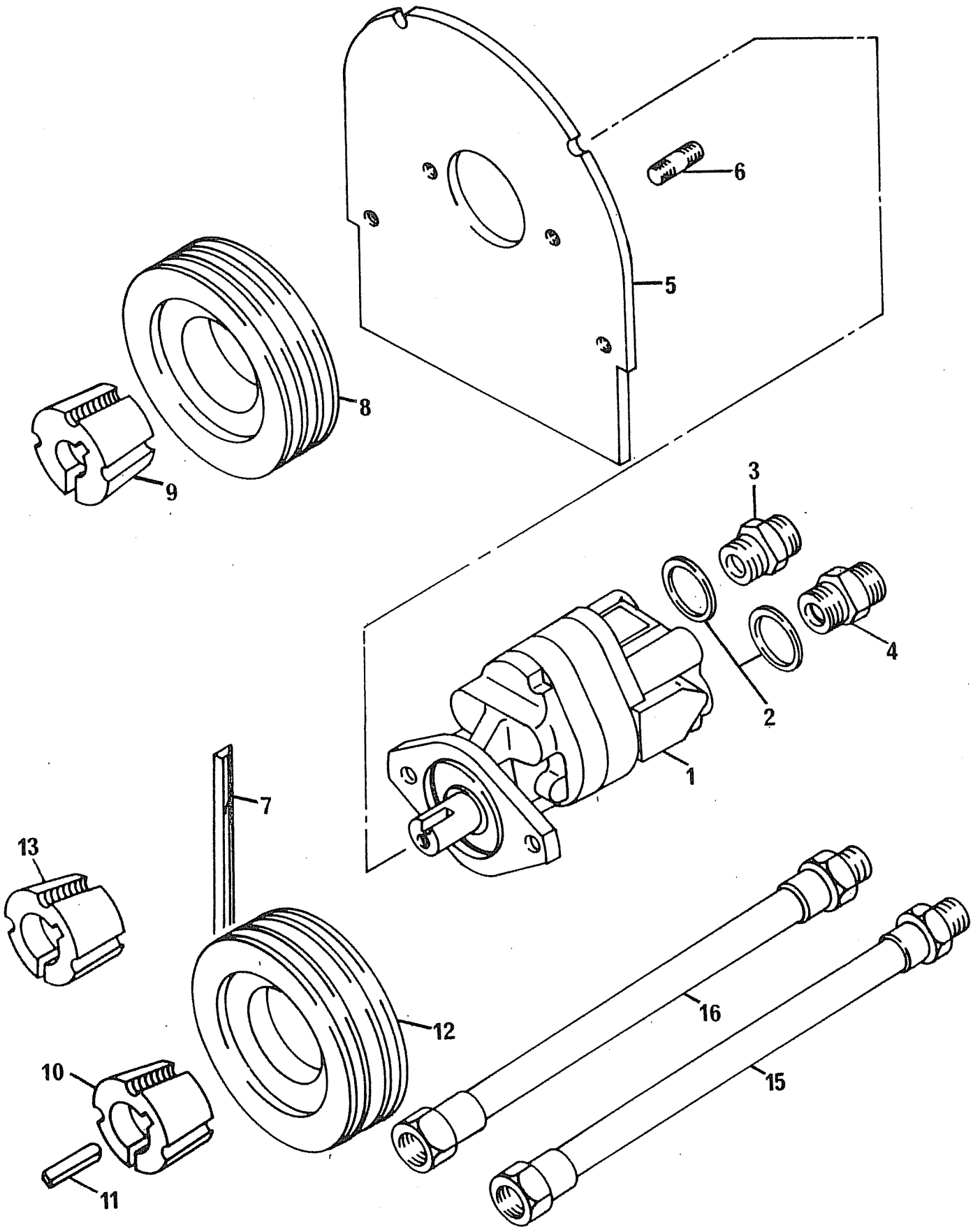


BEARING ASSEMBLY ISMP.8 HEAD

71.078.01

REF	PART NO.	DESCRIPTION	QTY	SERIAL NO. FROM - TO
*31	05.959.07	CIRCLIP - INT.85MM DIA	4	
*32	04.163.04	BEARING-SPH.ROLLER 45MM BORE	2	
*33	04.164.02	SEAL-LIP 70 DIA X 8MM	4)	PRE 1989
*34	04.251.01	COLLAR-SEAL 82 DIA X 17MM	4)	PRODUCTION
*35	04.252.01	WASHER 65 O/DX17 I/DX6MM	2	
35	05.264.33	SETSCREW M16 X 30MM PLATED	2	
35	05.283.04	SHAKEPROOF WASHER 16MM PLATED	2	
*37	04.248.01	BEARING HOUSING L.H.	1	
37	04.549.03	LH BEARING/HOUSING PROD.ASSY	-	
37	05.252.34	BOLT 5/8"UNF X 2"PLATED	2	
37	05.282.04	SPRING WASHER 16MM PLATED	2	
37	05.295.05	S.LOCKING NUT 5/8"UNF PLATED	2	
37	05.953.03	GREASE NIPPLE M10	1	
*38	04.248.02	BEARING HOUSING R.H.	1	
38	04.549.04	RH BEARING/HOUSING PROD.ASSY	-	
38	05.252.34	BOLT 5/8"UNF X 2"PLATED	2	
38	05.282.04	SPRING WASHER 16MM PLATED	2	
38	05.295.05	S.LOCKING NUT 5/8"UNF PLATED	2	
38	05.953.03	GREASE NIPPLE M10	1	
*39	04.255.01	GUARD-BEARING	1	
39	05.264.22	SETSCREW M12 X 25MM PLATED	2	
39	05.282.03	SPRING WASHER 12MM PLATED	2	
39	05.286.03	NUT M12 PLATED	2	
*33	06.909.01	SPACER-SEAL	4)	1989
*34	06.910.01	COLLAR-SEAL	4)	PRODUCTION

* MAIN PART IN GROUP, RELATED PARTS HAVE SAME REFERENCE NUMBER



MOTOR ASSEMBLY 1108 HEAD

71 053 01

REF	PART NO.	DESCRIPTION	QTY	SERIAL NO. FROM - TO
*01	02.865.46	MOTOR ASSY (84L)	1	
01	05.960.18	KEY-REP 1/4" X 1/4" X 27MM	-	
01	02.865.58	SEAL KIT	-	
*02	05.290.07	BONDED SEAL 1"BSP	2	
*03	05.373.01	ADAPTOR 3/4"BSP X 1"BSP	1	
*04	05.434.01	ADAPTOR 1"BSP X 1"BSP	1	
*05	04.151.01	PLATE-MOTOR MOUNTING	1	
05	05.264.24	SETSCREW M12 X 35MM PLATED	2	
05	05.281.03	FLAT WASHER 12MM PLATED	2	
05	05.282.03	SPRING WASHER 12MM PLATED	2	
05	05.286.03	NUT M12 PLATED	2	
*06	03.100.01	STUD M10 X 36MM	2	
06	05.282.02	SPRING WASHER 10MM PLATED	2	
06	05.286.02	NUT M10 PLATED	2	
*07	05.299.24	BELT-VEE SPA X 1060MM	3	
*08	03.795.01	PULLEY-VEE 160MM PCD X 3SPA	1	
*09	05.424.01	TAPER-LOCK BUSH 7/8"BORE	1	
*10	05.424.16	TAPER-LOCK BUSH 1.1/2"BORE	1	
*11	05.960.12	KEY-S/REP 3/8"X1/4"X1.5/16"	1	
*12	03.795.03	PULLEY-VEE 140MM PCD X 3SPA	1	

MOTOR ASSEMBLY 1508 AND ISMP.8 HEAD

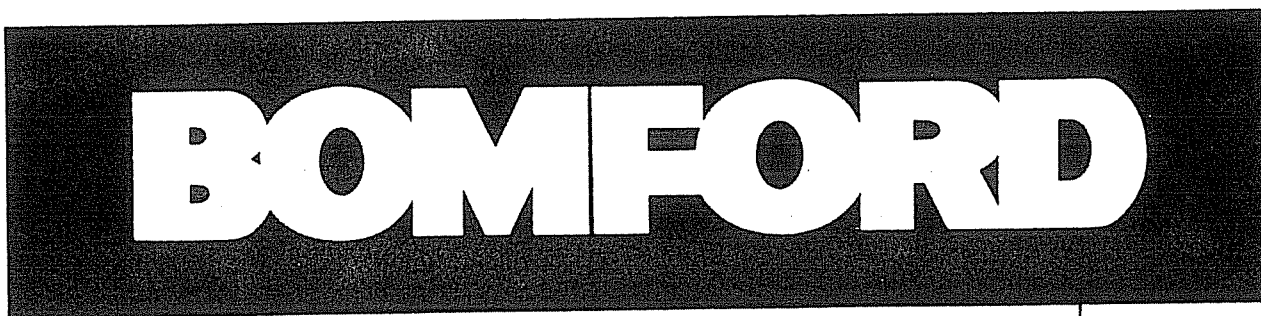
71 055 01, 71 057 01

*01	02.865.46	MOTOR ASSY (84L)	1	
01	05.960.18	KEY-REP 1/4"X1/4"X27MM	-	
01	02.865.58	SEAL KIT	-	
*02	05.290.07	BONDED SEAL 1"BSP	2	
*03	05.373.01	ADAPTOR 3/4"BSP X 1"BSP	1	
*04	05.434.01	ADAPTOR 1"BSP X 1"BSP	1	
*05	04.151.01	PLATE-MOTOR MOUNTING	1	
05	05.264.24	SETSCREW M12 X 35MM PLATED	2	
05	05.281.03	FLAT WASHER 12MM PLATED	2	
05	05.282.03	SPRING WASHER 12MM PLATED	2	
05	05.286.03	NUT M12 PLATED	2	
*06	03.100.01	STUD M10 X 36MM	2	
06	05.282.02	SPRING WASHER 10MM PLATED	2	
06	05.286.02	NUT M10 PLATED	2	
*07	05.299.24	BELT-VEE SPA X 1060MM	3	
*08	03.795.01	PULLEY-VEE 160MM PCD X 3SPA	1	
*09	05.424.01	TAPER-LOCK BUSH 7/8"BORE	1	
*12	03.795.03	PULLEY-VEE 140MM PCD X 3SPA	1	
*13	05.424.17	TAPER-LOCK BUSH 45MM BORE	1	
*14	05.960.13	KEY-S/REP 14MM X 9MM X 45MM	1	
*15+	04.160.01	PIPE - STEEL 1"BSP	1	
*16+	04.160.03	PIPE-STEEL 3/4"BSP	1	

+ ITEMS FOR 1500 HEAD ONLY
 DEPENDING UPON COWL BUILD, PULLEYS (08 AND 12) CAN BE REVERSED

* MAIN PART IN GROUP, RELATED PARTS HAVE SAME REFERENCE NUMBER

DECALS



1

6

**IMPORTANT
SAFETY INSTRUCTIONS**

NO.1 SHOWS GUARDS AS FITTED FOR DESPATCH THE GUARDS MUST BE FITTED AS IN 2, 3, OR 4, DEPENDING ON TYPE OF WORK BEING CARRIED OUT DO NOT OPERATE WITH GUARDS AS IN No.1 FOR FULL DETAILS SEE INSTRUCTION MANUAL

AS DESPATCHED NOT TO BE USED IN THIS CONFIGURATION

HEDGE TRIMMING REVERSE ROTATION

GROUND LEVEL CUTTING FORWARD ROTATION

DIRECTION OF TRAVEL

GROUND LEVEL CUTTING REVERSE ROTATION

03 814 01


7

CRANE LIFTING CAPACITY
 DRY WEIGHT OF THIS UNIT DOES NOT EXCEED
250 Kg. (550 lbs)
 FOR OPERATIONAL WEIGHT ADD ATTACHMENTS, OIL, ETC.
 If in doubt contact Bomford & Evershed Ltd 06 007 01

CRANE LIFTING CAPACITY
 DRY WEIGHT OF THIS UNIT DOES NOT EXCEED
350 Kg. (770 lbs)
 FOR OPERATIONAL WEIGHT ADD ATTACHMENTS, OIL, ETC.
 If in doubt contact Bomford & Evershed Ltd 06 007 07

9

**LIFT FROM POINTS
 MARKED WITH**



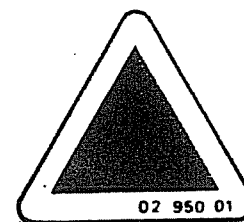
**SUITABLE FOR PRE-ASSEMBLY
 TRANSIT ONLY**

02 948 01

2



4

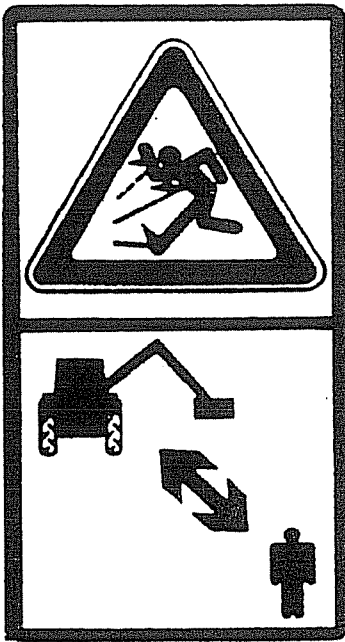


02 950 01

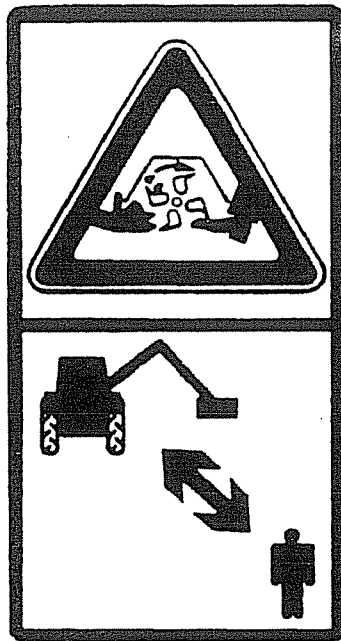
3

REF	PART NO.	DESCRIPTION	QTY	SERIAL NO. FROM - TO
<u>DECALS 1108 HEAD</u>				
*01	06.589.01	DECAL - BOMFORD (LARGE)	1	71.015.02
*02	02.948.01	DECAL - LIFTING POINT INST	1	
*03	02.950.01	DECAL - LIFTING POINT	2	
*04	03.785.01	DECAL - GREASE	2	
*06	06.007.01	DECAL - WEIGHT 250KG	1	
*07	03.614.01	DECAL - COWL GUARD POSITIONING	1	
<u>DECALS 1508 HEAD</u>				
*01	06.589.01	DECAL - BOMFORD (LARGE)	1	71.041.02
*02	02.948.01	DECAL - LIFTING POINT INST	1	
*03	02.950.01	DECAL - LIFTING POINT	2	
*04	03.785.01	DECAL - GREASE	2	
*07	03.614.01	DECAL - COWL GUARD POSITIONING	1	
*09	06.007.02	DECAL - WEIGHT 350KG	1	

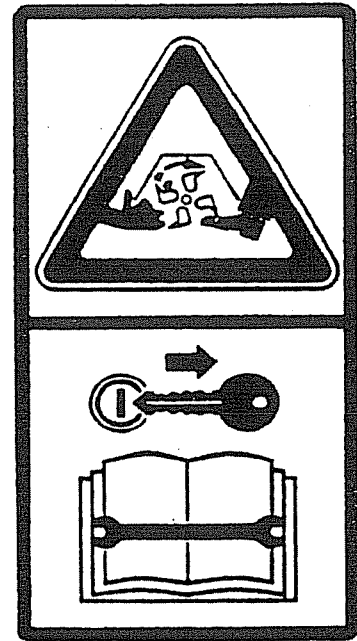
*MAIN PART IN GROUP, RELATED PARTS HAVE SAME REFERENCE NUMBER



09.821.04



09.821.05



09.821.08



09.821.10

IMPORTANT: SAFETY INSTRUCTIONS - GUARDING.
 THIS MACHINE IS FITTED WITH A MOTOR REVERSING VALVE.
 HEAD MUST BE GUARDED AS SHOWN.

IMPORTANT: INSTRUCTIONS DE SECURITE - PROTECTION.
 CETTE MACHINE EST MUNIE D'UNE SOUPAPE D'INVERSION DE
 ROTATION DU MOTEUR.
 LES PROTECTIONS DOIVENT ETRE MONTEES COMME CI-DESSOUS.

HEDGETRIMMING (TAILLAGE DE HAIE) GROUND LEVEL CUTTING (FAUCHAGE)

REVERSE ROTATION (ROTATION INVERSE) FORWARD ROTATION (ROTATION AVANT)

DIRECTION OF TRAVEL (SENS DE MARCHÉ) DIRECTION OF TRAVEL (SENS DE MARCHÉ)

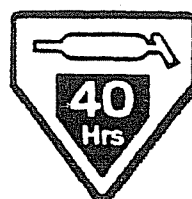
IF MOTOR DIRECTION IS CHANGED DURING WORK, BOTH ROTATION GUARD SETS MUST BE FITTED.
 SI LE SENS DE ROTATION SERA CHANGE PENDANT LE TRAVAIL, LES PROTECTEURS DOIVENT ETRE MONTEES POUR LES DEUX SENS.

DUAL ROTATION (LES DEUX SENS DE ROTATION)

08.886.01



09.843.01



09.810.02

REF	PART NO.	DESCRIPTION	QTY	SERIAL NO. FROM - TO
<u>DECALS 2066 HEAD</u>				
*01	08.886.01	DECAL - HEAD GUARDING	1	71.017.03
*02	09.810.04	DECAL - GREASE (40 HOURS)	4	
*03	09.821.04	DECAL - DANGER THROWN DEBRIS	1	
*04	09.821.05	DECAL - CUTTING HEAD DANGER	1	
*05	09.821.08	DECAL - SAFEWORKING ON HEAD	1	
*06	09.821.10	DECAL - KEEP NUTS TIGHT	1	
*07	09.843.01	DECAL - LIFT POINT 250KG	2	

*MAIN PART IN GROUP, RELATED PARTS HAVE SAME REFERENCE NUMBER