

IM 1863

TURBOMOWER

1900

2250

(INCLUDING REPLACEMENT PARTS INFORMATION)

ISSUE 2

IMPORTANT

NOTE HERE THE SERIAL NUMBER OF YOUR MACHINE AND ALWAYS QUOTE IT IN ANY COMMUNICATION WITH US OR YOUR DEALER. THIS IS PARTICULARLY IMPORTANT WHEN ORDERING SPARES. REMEMBER TO INCLUDE ALL NUMBERS AND LETTERS.

MACHINE SERIAL NUMBERS

THE INFORMATION GIVEN THROUGHOUT THIS MANUAL IS CORRECT AT THE TIME OF PUBLICATION. HOWEVER, IN THE COURSE OF CONSTANT DEVELOPMENT OF BOMFORD TURNER MACHINES, CHANGES IN SPECIFICATION ARE INEVITABLE. SHOULD YOU FIND THE INFORMATION GIVEN IN THIS BOOK TO BE AT VARIANCE WITH THE MACHINE IN YOUR POSSESSION, YOU ARE ADVISED TO CONTACT THE BOMFORD TURNER SERVICE DEPARTMENT WHERE UP-TO-DATE INFORMATION WILL BE PROVIDED.

THE MANUAL CAN CONTAIN STANDARD AND OPTIONAL FEATURES AND IS NOT TO BE USED AS A MACHINE SPECIFICATION.

THE MACHINE HAS BEEN TESTED AND IS CONSIDERED SAFE IF CAREFULLY USED. ENSURE YOUR OPERATOR IS PROPERLY TRAINED IN ITS USE AND MAINTENANCE.

IMPORTANT

NOTEZ ICI LES NUMEROS DE SERIE DE VOTRE MACHINE ET MENTIONNEZ LES DANS TOUTE COMMUNICATION AVEC NOS SERVICES OU VOTRE REVENDEUR. CECI EST IMPORTANT POUR LA COMMANDE DE PIECES DETACHEES. PENSEZ A NOTER TOUS LES NUMEROS ET TOUTES LES LETTERS.

NUMEROS DE SERIE DE LA MACHINE _____

LES INFORMATIONS DONNEES DANS CE MANUEL SONT CORRECTES CEPENDANT, DU FAIT DE DEVELOPPEMENT CONSTANT DES MACHINES BOMFORD TURNER.

CHANGEMENTS DANS LES CARACTERISTIQUES SONT INEVITABLES.

SI VOUS TROUVEZ QUE LES INFORMATIONS DONNEES NE CORRESPONDENT PAS A VOTRE MACHINE VEUILLEZ CONTACTER LE SERVICE DES REPARATIONS OU DES INFORMATIONS PLUS RECENTES VOUS SERONT DONNEES.

CE MANUEL PEUT MONTRER DES CARACTERISTIQUES OPTIONNELLES ET NE PEUT PAS ETRE CONSIDERE COMME SPECIFICATION DE LA MACHINE.

CETTE MACHINE A ETE TESTEE, ET ELLE EST CONSIDEREE COMME FIABLE A CONDITION D'UNE BONNE UTILISATION. ASSUREZ-VOUS QUE VOTRE OPERATEUR EST QUALIFIE EN CE QUI CONCERNE L'UTILISATION DE LA MACHINE AINSI QUE SON ENTRETIEN.

WICHTIG

TRAGEN SIE HIER DIE SERIENNUMMERN IHRER MASCHINE EIN UND GEBEN SIE DIESE IMMER AN, WENN SIE SICH AN UNS ODER IHREN HÄNDLER WENDEN. DAS IST BESONDERS BEI ERSATZTEILBESTELLUNGEN WICHTIG. VERGESSEN SIE NICHT, ALLE ZAHLEN UND BUCHSTABEN ZU NOTIEREN.

SERIENNUMMERN DER MASCHINE _____

DIE ANGABEN INDIESEM HANDBUCH SIND BEI VERÖFFENTLICHUNG KORREKT. AUFGRUND DER KONSTANTEN WEITERENTWICKLUNG VON BOMFORD TURNER MASCHINEN SIND JEDOCHÄNDERUGDEN IN DER SPEZIFIKATION UNVERMEIDLICH. WENN DIE INFORMATION IN DIESEM HANDBUCH NICHT MIT IHRER MASCHINE ÜBEREINSTIMMEN, NEHMEN SIE BITTE KONTAKT MIT DER BOMFORD TURNER KUNDENDIENSTABTEILUNG AUF, DIE IHNEN GERNE DIE AKTUELLEN INFORMATION ZUKOMMEN LÄSST.

DAS HANDBUCH KANN SOWOHL BESCHREIBUNGEN FÜR DIE STANDARD AUSFÜHRUNG ALS AUCH FÜR ZUBEHÖR ENTHALTEN UND IST NICHT ALS MASCHINENSPEZIFIKATION ZU VERWENDET.

DIE MASCHINE IST GETESTET UND BEI SACHGEMÄSSEM BETRIEB ALS SICHER BEFUNDEN WORDEN. SORGEN SIE DAFÜR, DASS IHR BEDIENPERSONAL IN ANWENDUNG UND WARTUNG RICHTIG GESCHULT WIRD.

**This manual covers the Bomford Turbomower 1900 & 2250
lightweight trailed flail mowers**

Section	Page No
1 General Information	3
2 Technical Information	4
3 Safety	6
4 Installation	9
5 Setting Up	12
6 Operation	13
7 Maintenance	15
8 Disposal	18
Replacement Parts Section	19

IMPORTANT

This machine is designed for vegetation control
and must not be used for any other purpose

It is potentially hazardous to fit or use
any parts other than genuine **Bomford Turner** parts

The company disclaims all liability for the
consequences of such use which, in addition,
voids the machine warranty

We reserve right to modify the technical data and characteristics of the machines at any time without prior notice.

EC DECLARATION OF CONFORMITY

Conforming to EEC Directive 98/37/EC

We,

Bomford Turner Ltd, PO Box 18, Salford Priors, Evesham, Worcestershire WR11 5SW

Declare under our sole responsibility that

The product (type): ***Tractor Mounted Flail Mower***

Product Code: **MA19**

Serial No.....

Date

Manufactured by the above company

*Complies with the required provisions of the Directive 98/37/EC and,89/336/EEC
AMD 92/31/EEC, AMD 93/68/EEC, and Conforms with European Norm. BS EN 292.*

**Part 1:1991 Safety of Machinery – Terminology, Methodology.
Part 2 1991 Safety of Machinery – Technical Specifications**

*And other national standards associated with its design and construction
as listed in the Technical File.*

Signed

On behalf of **Bomford Turner Ltd**

Responsible Person

Status: **Chief Design Engineer**

Date: **03/10/01**

1. GENERAL INFORMATION

1.1 Before Use

This operation and maintenance manual is intended for Operators and Maintenance Personnel and should be read and fully understood before operating or working on the machine. It is important to follow these instructions in order to avoid endangering the Operator's and other people's safety. In case of doubt, do not experiment - call Bomford Customer Service Department or your local Bomford dealer.

1.2 Machine Identification

Each mower is fitted with an identification plate with the data necessary to identify the model and serial number. Make a note of the serial number when you order replacement parts or after sales service.

1.3 Replacement Parts

It is strongly recommended to use genuine replacement parts to avoid altering the technical features of the mower. Bomford Turner do not accept responsibility for any damage or injuries to people due to unauthorised modifications or the use of non-genuine replacement parts.

2. TECHNICAL INFORMATION

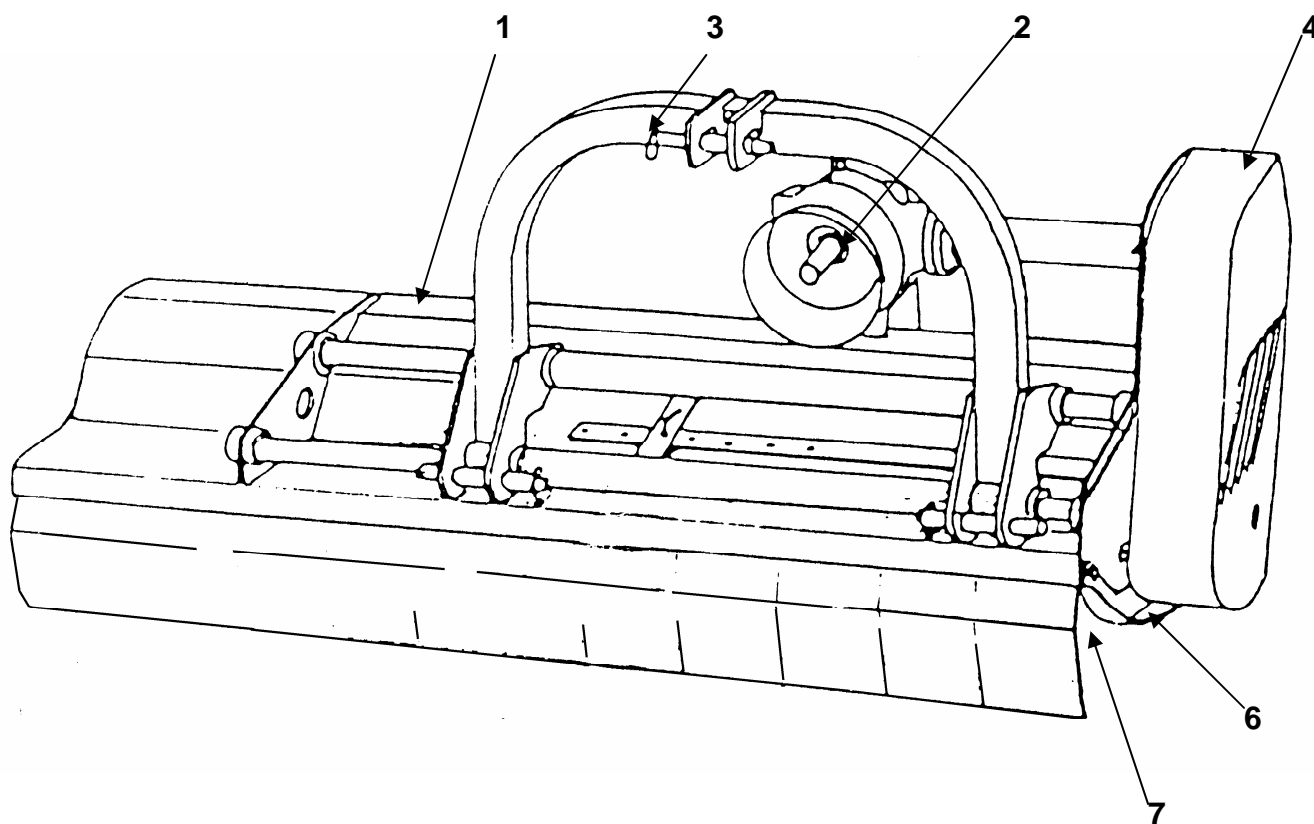
2.1 Designed Use

The Turbomower has been designed to cut amenity areas, light scrub, vegetable crop residues and most annual growth. A sliding 'A' frame allows the machine to be semi offset.

Any other use is considered improper and the manufacturer disclaims all responsibility for any consequential injuries to people, or for damage to the machine. Before use read the safety and maintenance instructions provided by the manufacturer.

2.2 General Arrangement (see diagram below)

- 1 - Cowl
- 2 - Gearbox
- 3 - A frame
- 4 - Drive guard
- 5 - Rear adjustable roller
- 6 - Adjustable skids
- 7 - Flails



2.3. Technical Specifications

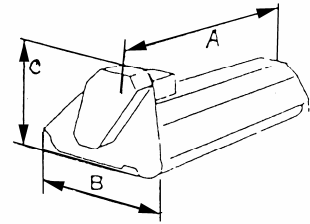


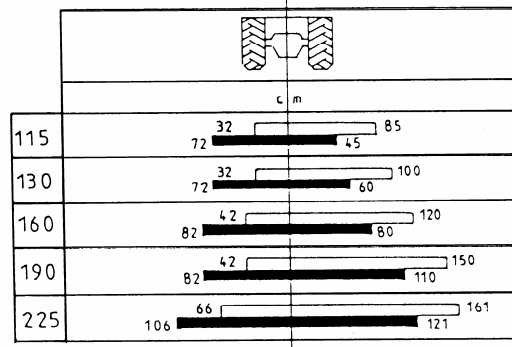
Table.1

Model		*	*	*	1900	2250
Width of cut	cm	116	131	161	191	226
Min.tractor required power	KW/H P	19-23/ 25-30	23-27/ 30-35	27-30/ 35-40	34-38/ 45-50	42-45/ 55-60
PTO speed	rpm	540	540	540	540	540
Weight	kg	185/190	230/240	315/330	365/385	405/427
Attachment	Cat.	II	II	II	II	II
Y-blades	Nr.	28	32	40	48	56
Hammer blades	Nr.	14	16	20	24	28
Width A	CM	1335	1485	1785	2085	2435
Length B	CM	1000	1000	1000	1000	1000
Height C	CM	950	950	1000	1000	1000

2.3. Width of cut

Table. 2 shows the dimensions of cut of the mower.

Table 2



2.4. Equipment

Table 3

Equipment TFZ	*	*	*	1900	2250
Y-blades	◆	◆	◆	◆	◆
Fine cut blades	□	□	□	□	□
Rear roller	◆	◆	◆	◆	◆
Mechanic side movement	◆	◆	◆	◆	◆
Hydraulic side movement	□	□	□	□	□
skids	□	□	□	□	□
Hydraulic rotary side cutter	□	□	□	□	□

◆ = Standard eqt

□ = Optional eqt

3. SAFETY INFORMATION

3.1 General Safety Rules:

- It is important to read and follow the instructions for use and maintenance before starting work.
- Improper or incorrect use may seriously damage the machine or injure people.
- Both the Operator and the Maintenance Fitter must be aware of the dangers resulting from improper use or incorrect repairs.
- Before starting, checks on tractor and mower must be carried out with regard to functionality and road safety.
- Even when using the mower correctly, stones or other objects may be thrown a long distance, therefore nobody must stand within the danger area. Special attention must be paid when working near roads or buildings.
- Use tractors with safety cabs.
- The condition of flails and of all guards must be checked before beginning work. They must be replaced if damaged or missing.
- During checks or repairs, make sure nobody could start the tractor or mower by mistake,
- Never wear loose clothes.
- Never carry passengers on the tractor or mower.
- Never connect the power take off with the engine running
- Never approach the mower until the rotor shaft has completely stopped.
- Do not enter the working zone of the PTO shaft. It is dangerous to approach the rotating parts of the machine.
- Keep the PTO shaft guard in good order.
- Before starting, check the surrounding area for the presence of people and/or animals.
- Do not stand in the range of the operation of the machine.
- The PTO shaft must only be fitted and removed with the engine stopped and the starting key removed.
- Before connecting the PTO, check that the speed and the rotational direction correspond to those of the mower.
- Before leaving the tractor with the mower attached, proceed as follows:
 1. Disconnect the PTO.
 2. Lower the machine to the ground (with the tractor hydraulics).
 3. Apply the hand brake and, if on a steep slope, chock the tractor.
 4. Remove the ignition key.
- Immediately replace any safety signs or missing or damaged decals.

3.2 Safety Rules concerning Road Traffic

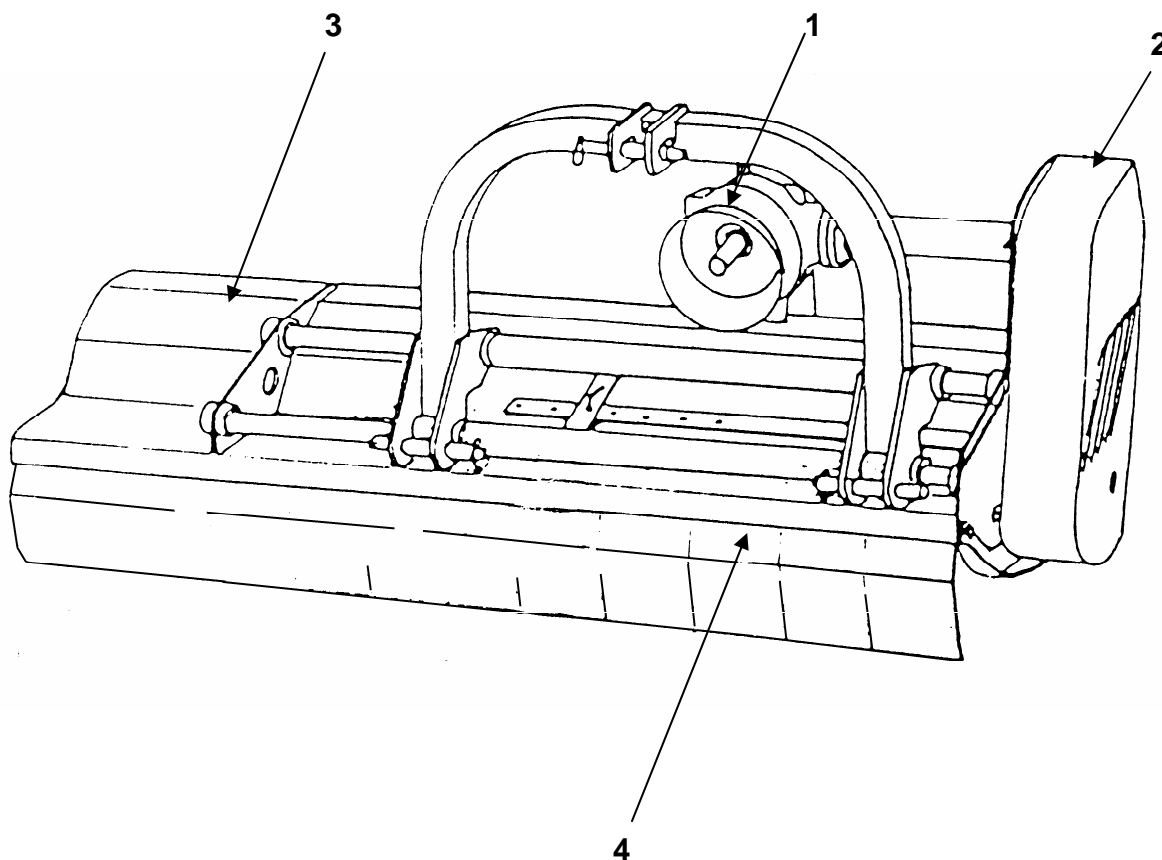
- In transport, reduce speed, especially on bumpy roads. The weight of the mower may make driving difficult and damage the mower itself.
- Check that the levers that operate the hydraulics are locked, to avoid lowering of the machine during transport.
- When driving on public roads, respect all road rules.
- Never transport the mower with the rotor moving.

3.3 Safety Rules during use

- Pay special attention when working to avoid fixed objects, such as road drain covers, kerbs etc. These could cause the breakage of the flails, debris from which would be thrown at very high speed.
- If any foreign object should get entangled in the rotor, stop immediately. Stop the rotor and the tractor and take out the ignition key. Put gloves on and clear the rotor with the aid of pliers or shears. Do not try to disentangle by reversing the rotor to clear itself.
- Do not use the machine when there is vibration in the flail head, as this could cause breakage or serious damage. Stop the machine and investigate the cause of the vibration.

3.4 List of Guards fitted to the Mower (see diagram below)

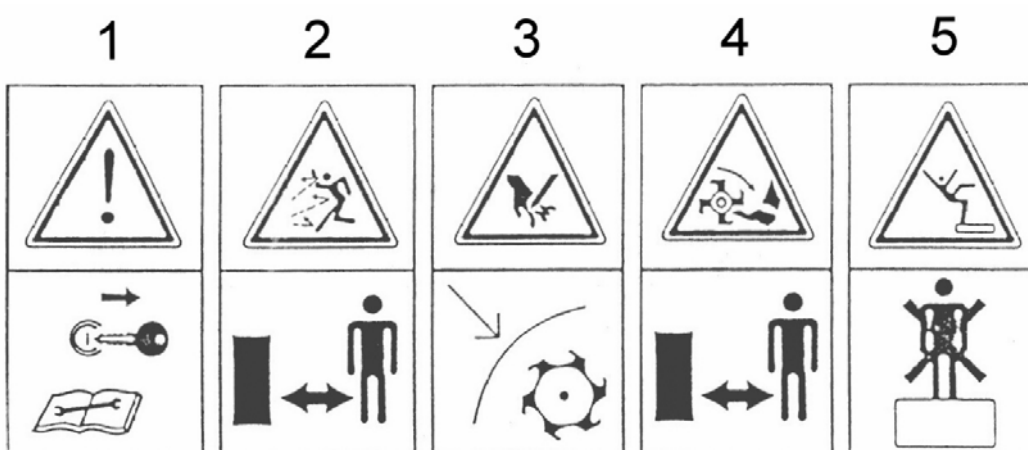
1. PTO shaft guard
2. Belt guard
3. Danger and warning decals
4. Front guard
5. Side guard-skids



3.5 Description and Location of Safety Decals

Carefully follow the instructions given on the decals (*see illustrations below*).

- 1 Always remove the ignition key and read the instructions carefully before starting servicing and/or maintenance operations.
- 2 Keep bystanders at a safe distance from the machine to avoid the risk of flying objects.
- 3 Never remove the guards while the parts of machine are moving. It is dangerous and may cause injury.
- 4 Keep at a safety distance from the machine to avoid the risk of injuring feet.
- 5 It is forbidden to ride or travel on the machine.



4. INSTALLATION AND HANDLING

4.1 Lifting and Moving

To move the mower use a fork lift truck with a lifting capability suitable for the weight of the machine (*see technical specifications on page 5*).

4.2 Unpacking

To make transport easier, the machine can be supplied with the 'A' frame removed In this case use the bolts, locknuts and washers supplied to fix the frame and the brackets to the machine.

4.3 Attachment To and Removal from Tractor

Before carrying out this operation and whenever the mower is used, it is important to:

Visually check the machine for damage

Check that all guards are fitted and in good condition.

Check that all flails are in place and in good condition.

Grease the bearings and any other part as indicated by the decal.

Check that the number of revolutions and the rotational direction of the PTO correspond to those required by the machine (*see Fig3 below*).

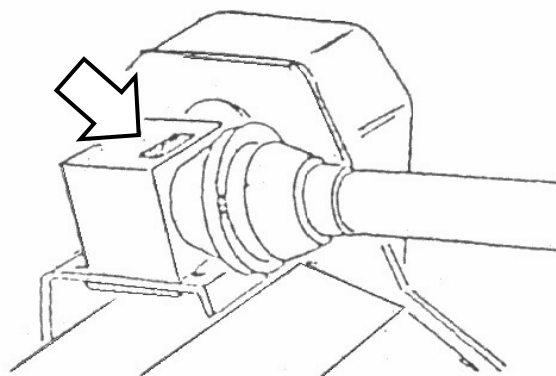


Fig 3

To attach the machine to the tractor: (see Fig 4 below)

Position the tractor lower links (1) near the machine, in line with the pins.

Insert the pins (2) and secure them with the spring clips (3).

Fit the top link (4) and raise the machine to a position parallel with the ground.

Adjust the two-tractor lower linkage stabilisers (3) thus fixing the machine to the tractor in a central position.

Proceed in reverse order to detach the mower from the tractor.

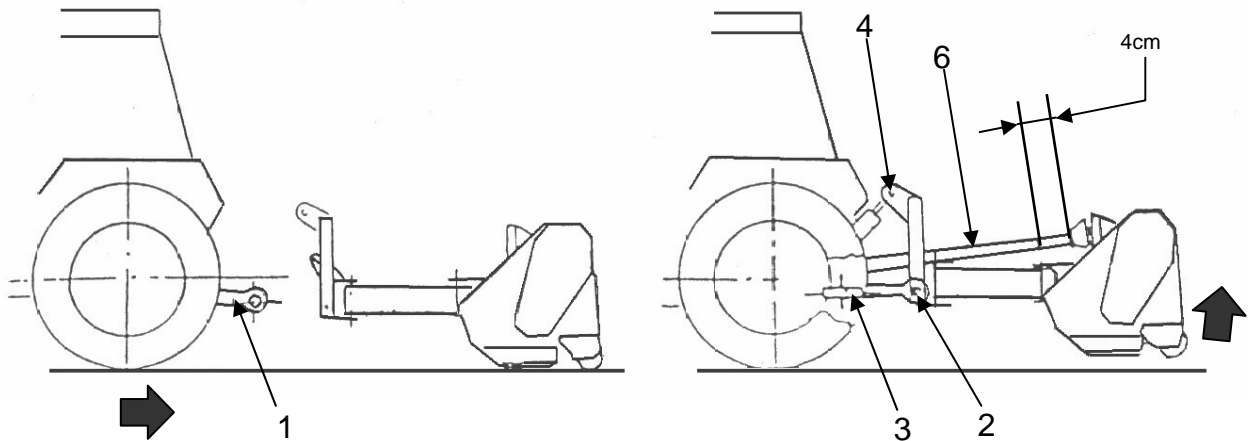


Fig 4

4.4 Fitting the PTO shaft

Follow the Instructions in 4.3 then assemble the PTO shaft (6) and check that the overlap is not less than $\frac{2}{3}$ of L. Be sure to keep a 4 cm backlash (see illustration above) if it needs shortening, proceed as shown below (see Fig 5).

The guards of the PTO shaft must be fixed to the machine and to the tractor with chains, to prevent rotation. The minimum overlap of the guard and the PTO shaft must not be less than 5 cm. (see Fig 6 below).

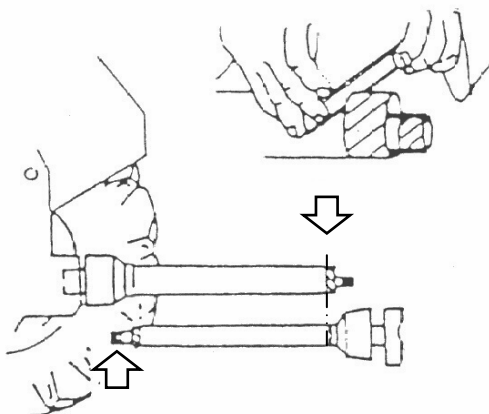
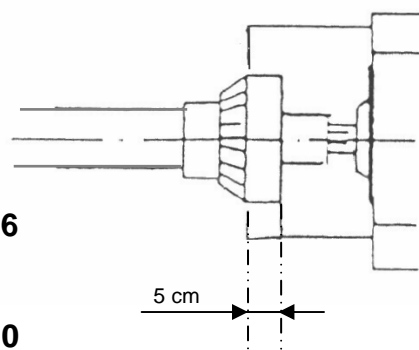


Fig 5

Fig 6

10



4.5 Tractor Stability

Due to the design of the mowers and the work they do, it is essential to ensure tractor stability in order to eliminate any risk of overturning.

Lift the machine and check that the tractor is stable. Ballast the rear wheel of the tractor opposite to the offset of the mower (if necessary) and at the front of the tractor (see Fig 7 below).

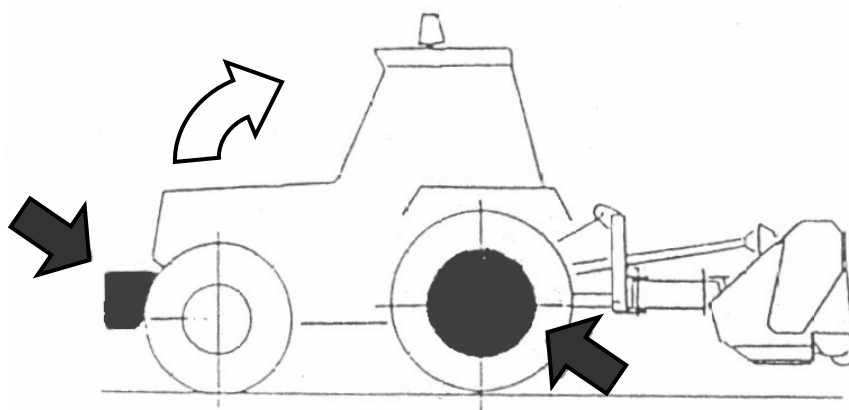


Fig 7

4.5 Parking

Park the machine in a safe place on flat and firm ground to prevent the risk of rolling over.

Lower the mower to the ground with the aid of the tractor hydraulics. (See Fig 8 below)

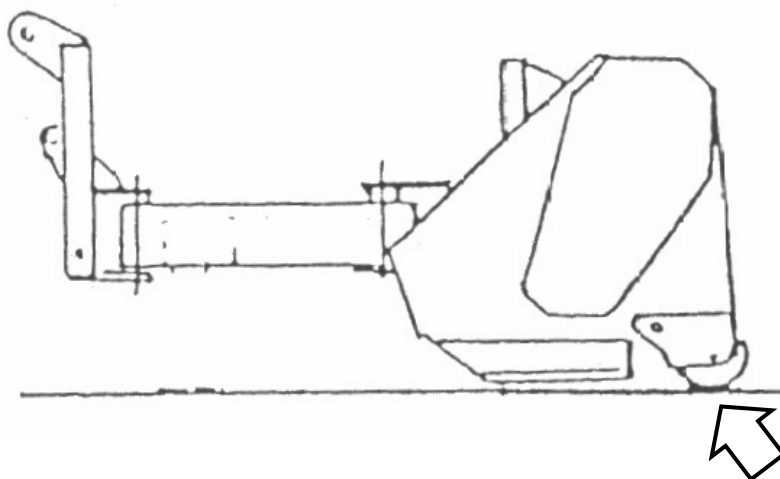


Fig 8

5. ADJUSTMENT AND SETTING UP

5.1 Adjustment

Adjustment of the height of cut is obtained by moving the rear roller in order to suit the material to be cut (see *Fig 9 below*). Do not adjust the height with the top link.

IMPORTANT: Flails must never touch the ground.

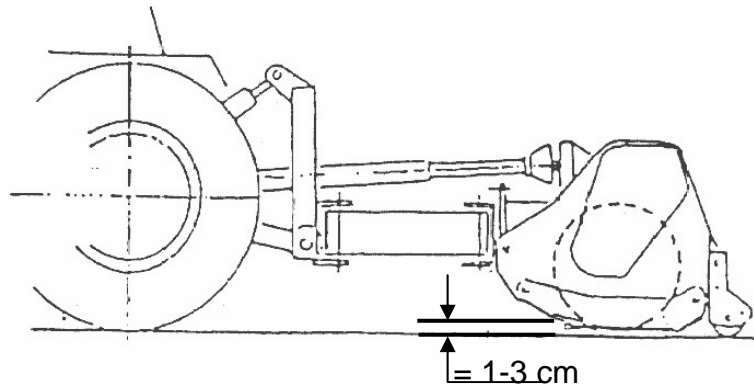


Fig 9

6.USE AND OPERATING INSTRUCTIONS

6.1 Starting

Before using the mower check the tightness of all bolts and the condition and security of all guards. Check that the number of revolutions and the rotational direction of the PTO of the tractor correspond to those required by the machine. Refer to decal on the gearbox (see page 9). Engage the PTO at low engine RPM to avoid damaging the transmission gearbox and belts.

6.2 Working Mode

Adjust the machine to suit the type of work to be done and the material to be cut: adjust the height of cut, as shown (see Fig 9)).

Working speed is chosen to suit the material to be cut and the degree of shredding required. The optimum speed ranges from 3 to 8 km per hour.

IMPORTANT: When offsetting the machine, lift the machine off the ground to avoid damage to the frame (see Fig 10)

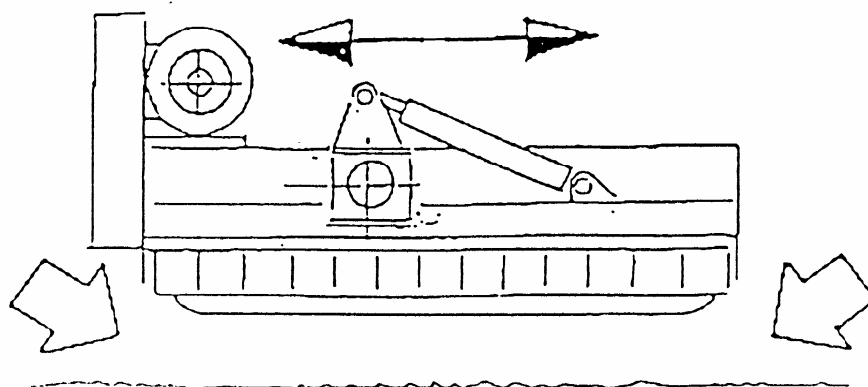


Fig 10

IMPORTANT: When reversing, lift the machine off the ground to avoid damage. (See Fig 11 below)

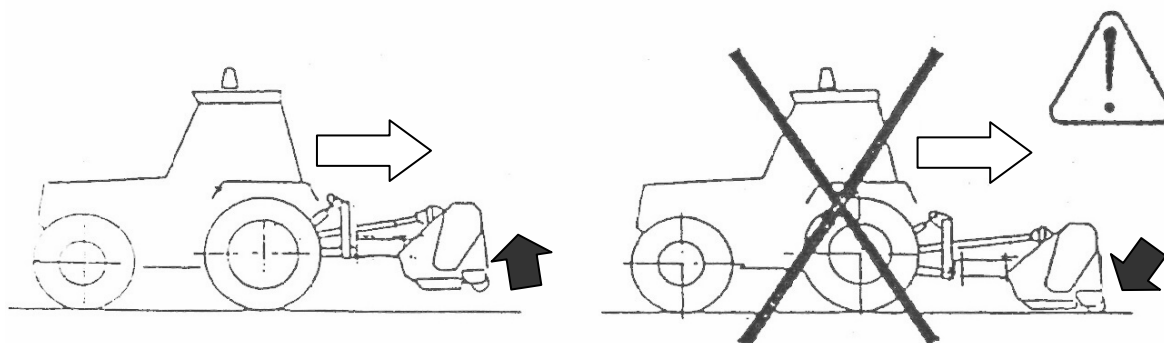


Fig 11

6.3 Stopping

Lower the machine to the ground.

Stop the tractor, take out the ignition key and apply the hand-brake.

Disconnect the PTO.

If the ground is sloping, block the tractor wheels.

6.4 Transport Position

For transport it is important to:

Observe all local transport regulations.

Reduce speed, especially on bumpy roads, the weight of the machine may make driving difficult and damage the machine itself.

The PTO must be disconnected.

IMPORTANT:

During transport on bumpy roads it is important to move the machine into the central position.

7. MACHINE MAINTENANCE

7.1 General

All maintenance, cleaning and repair operations must be carried out with the mower firmly lowered to the ground and detached from the tractor, or with the PTO disconnected and the tractor engine switched off and ignition key removed.

After the first two hours operation from new (or after fitting new belts) check belt tension.

Regularly and after every 8 hours of machine operation:

Tighten bolts and nuts.

Check wear and condition of flails.

Check the safety guards.

Check belt condition.

Visually check the frame to detect possible damage.

Check gearbox and oil levels.

Grease the parts indicated on the appropriate decal. (See Fig 12 below)

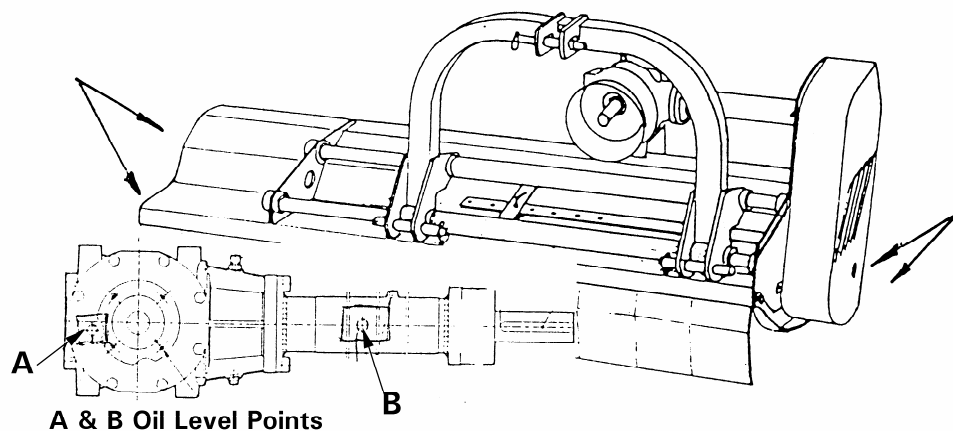


Fig 12

After every 100 hours of operation, grease the moving parts of the PTO shaft, separating the two parts of the shaft.

At the end of each working day, or when storing the machine, remove mud or other material from the cowl and rotating parts (bearings, pins etc.) in order to avoid rust and possible seizure. Fully grease the machine as described above.

After long periods of inactivity, repeat the operations above before using the machine.

Use grease classification DIN 51825 (KR 2 K)

For gearbox use compatible oils - classification ISO VG 220

7.2 Trouble Shooting Chart

PROBLEM	CAUSES	REMEDIES
Irregular cut	<ul style="list-style-type: none"> - worn, bent or broken flails - machine is not in level with the ground - clogged material due to excessive working speed 	<ul style="list-style-type: none"> - replace - level it - reduce working speed
Machine noise	<ul style="list-style-type: none"> - loose bolts - cracks or initiation of flail head 	<ul style="list-style-type: none"> - Tighten bolts - Have it repaired in specialized workshops
Gearbox noise	<ul style="list-style-type: none"> - lack of oil - worn gears - worn bearings 	<ul style="list-style-type: none"> - fill to level - replace - replace
vibration	<ul style="list-style-type: none"> - broken or worn flails - unbalanced rotor - worn rotor bearings 	<ul style="list-style-type: none"> - replace - replace in authorized workshops
Premature flail wear	<ul style="list-style-type: none"> - flails touching the ground 	<ul style="list-style-type: none"> - adjust the height of cut
Excessive backlash in joints	<ul style="list-style-type: none"> - worn pins 	<ul style="list-style-type: none"> - replace
Breakage of roller bearings	<ul style="list-style-type: none"> - Violent impact on the ground when the machine is lowered - Dirty or little greased bearings 	<ul style="list-style-type: none"> - Lower it gently - Clean and grease
Belts overheating	<ul style="list-style-type: none"> - Flails touching to the ground - Working speed unsuitable to the amount of the material to be cut 	<ul style="list-style-type: none"> - Adjust the height of cut - Reduce speed

7.3. Replacing Parts

Before carrying out any work, it is important to:

- Lower the machine to the ground
- Disconnect the PTO, stop the tractor and take out the ignition key.
- Wear heavy-duty gloves

7.3.1 Flail replacement

When the flails are worn, they must all be replaced. In case of a partially broken flail it is advisable to replace the broken one and the one diametrically opposite, in order to maintain the balance (see Fig 13 on page 17).

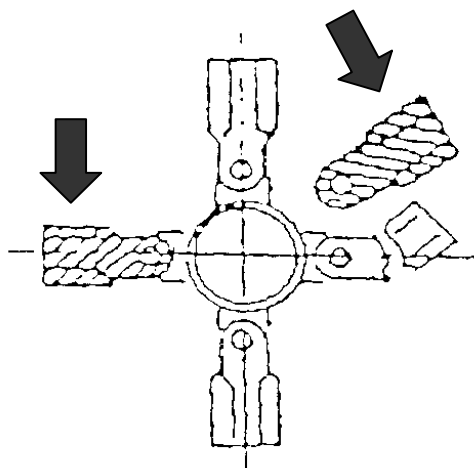


Fig 13

7.3.2 Belt Replacement

This operation must be carried out with the machine resting on the ground, the PTO disconnected and the ignition key out.

Remove the belt guard; slacken the screws (1) (see Fig 14 below),

Unscrew the adjuster (2), remove the belts and replace them with identical ones (dimension and type).

IMPORTANT: more complex operations must be carried out in authorised workshops.

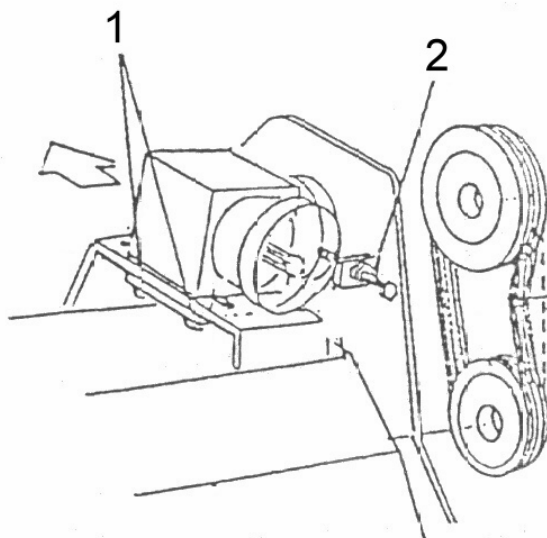


Fig 14

8. DISPOSAL

8.1 Safe Disposal of Machine

When the machine is at the end of its useful life and beyond economical repair, it should be disposed of in a safe and proper manner. The materials in the machine that have to be separated and disposed of are:

Steel

Mineral oil

Rubber

Plastic

Disposal of the above materials must be in accordance with current local legislation

Replacement Parts Section

For best performance...

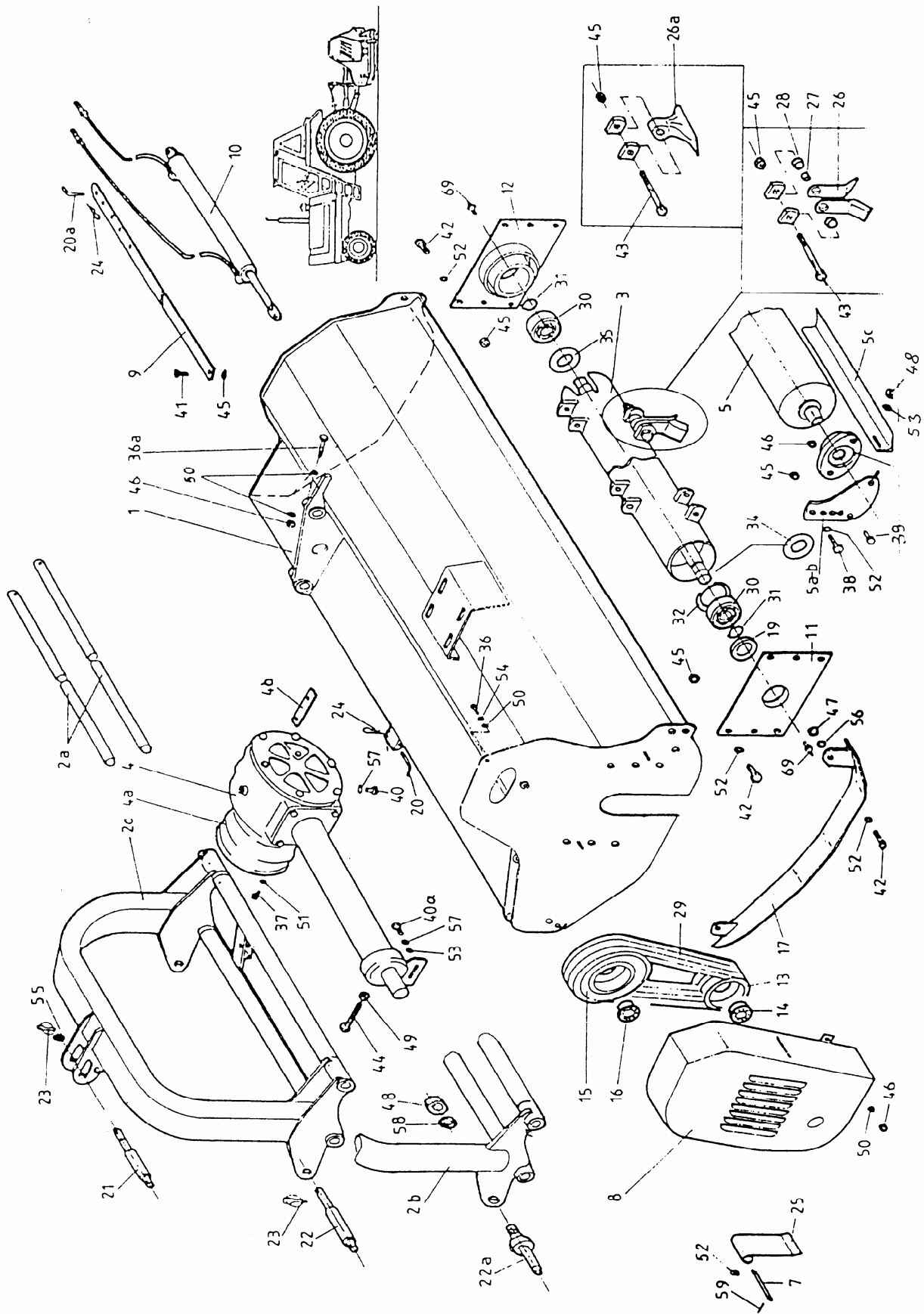
USE ONLY GENUINE SERVICE PARTS

To be assured of the latest design improvements purchase your 'Genuine Replacements' from the Original Equipment Manufacturer through your local Dealer or Stockist.

Always quote:

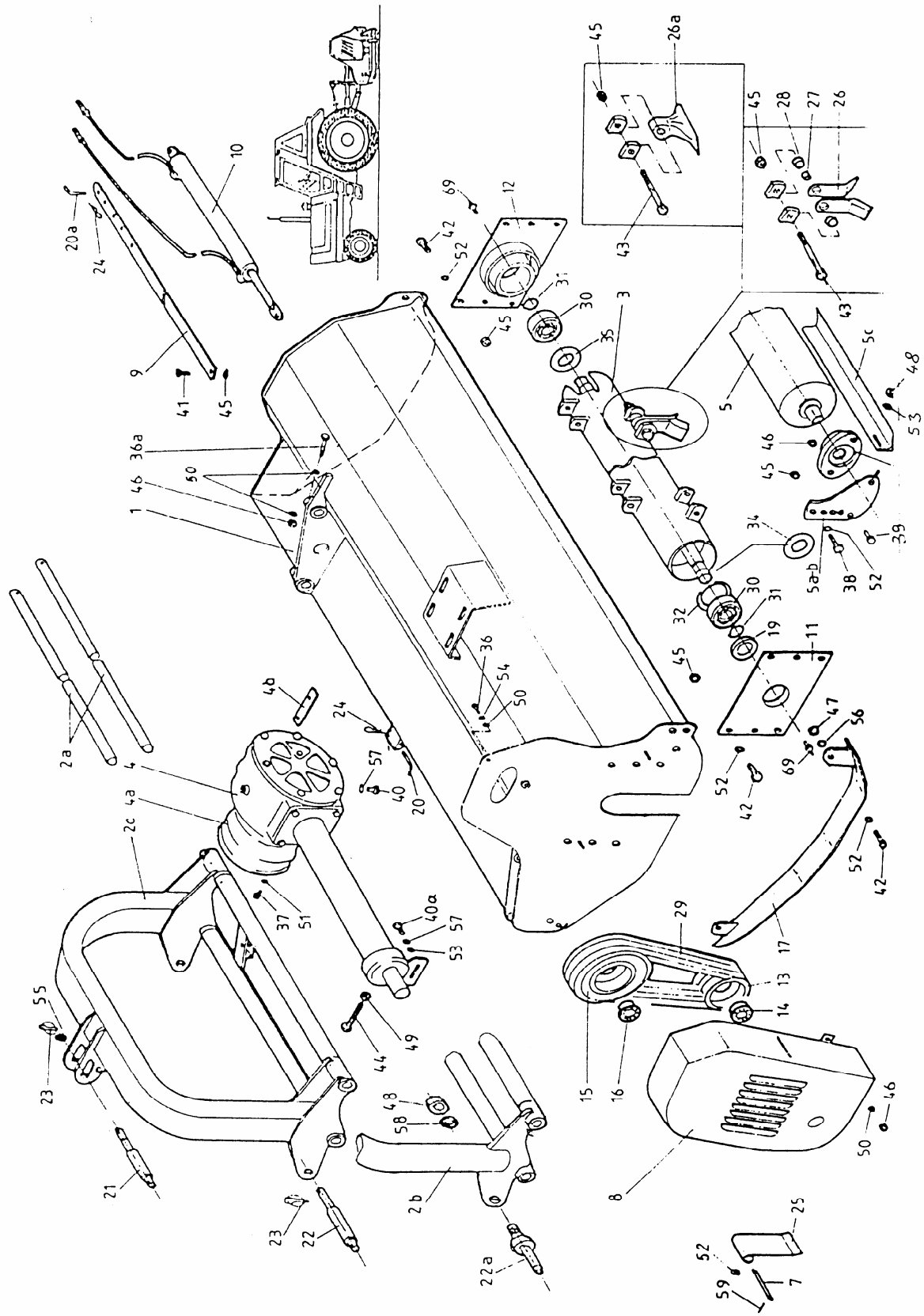
- ***Machine Type***
- ***Serial Number***
- ***Part Number***

Design Improvements may have altered some of the parts listed in this manual – The latest part will always be supplied when it is interchangeable with an earlier one.

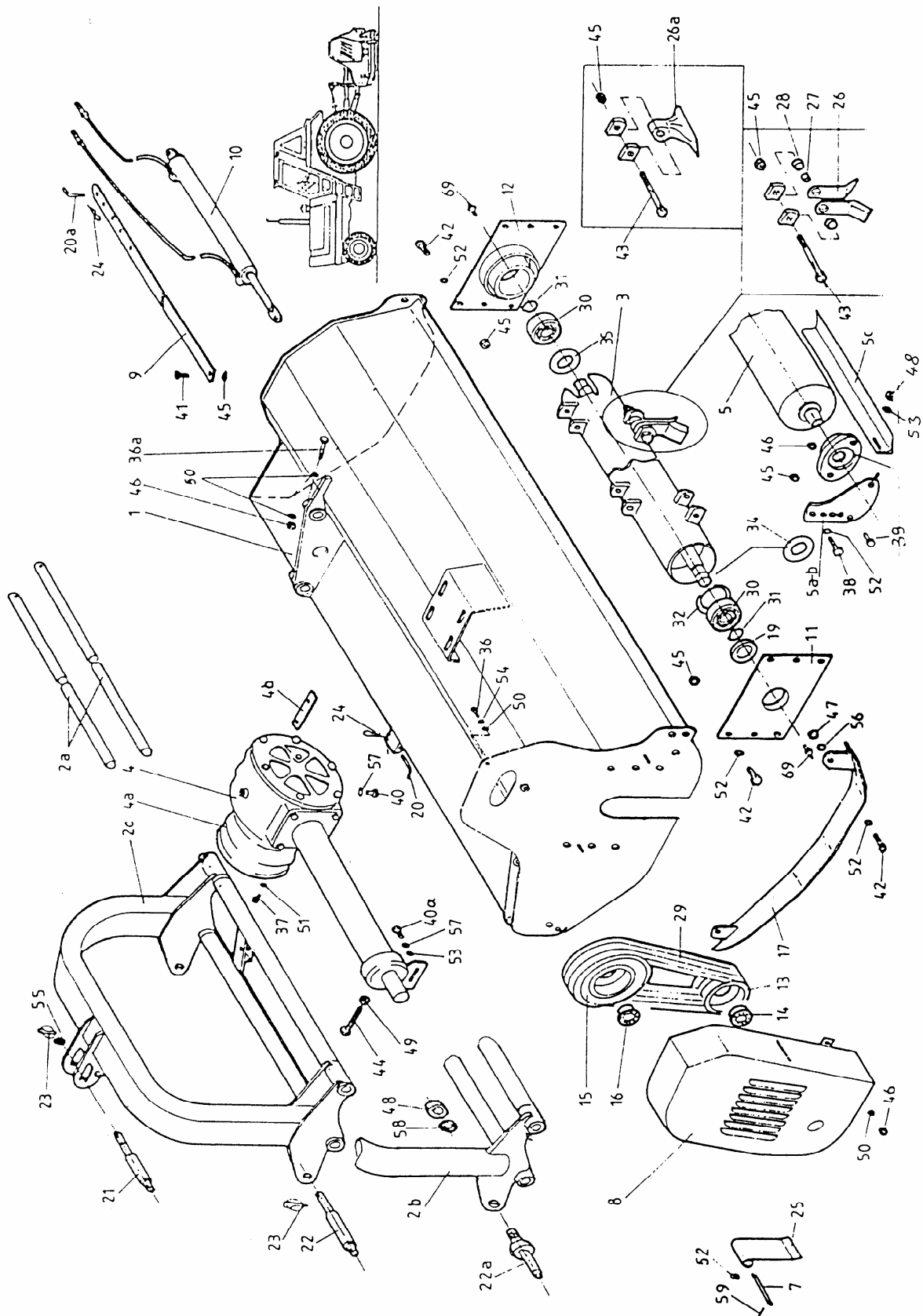


11 SPARE PARTS

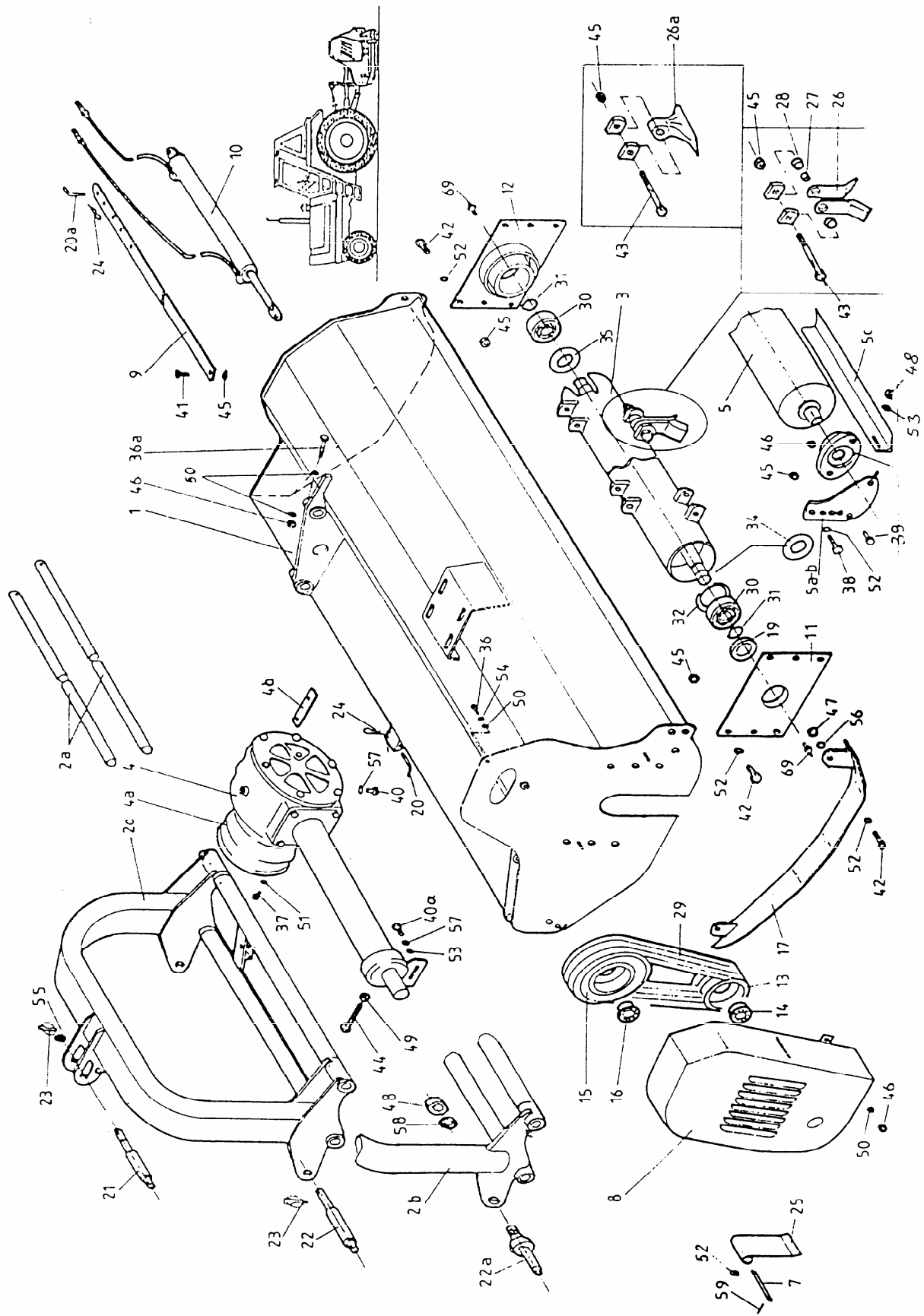
<i>Nr</i>	<i>Part</i>	<i>Code</i>	*	*	*	1900	2250
1	Frame 115	11749	1				
	Frame 130	11750		1			
	Frame 160	11751			1		
	Frame 190	11752				1	
	Frame 225	11753					1
2a	Guidance 115/130	11685	2	2			
	Guidance 160/190	11714			2	2	
	Guidance 225	11724					2
2b-c	A frame	11754	1	1			
	A frame	11755			1	1	1
3	Rotor 115	11727	1				
	Rotor 130	10720		1			
	Rotor 160	10721			1		
	Rotor 190	10722				1	
	Rotor 225	10723					1
4	Gear box 115/130	10859	1	1			
	Gear box 160/190	10860			1	1	
	Gear box 225	10861					1
4a	Protection for PTO	11002	1	1	1	1	1
4b	Underlay plate	10986	2	2	2	2	2
5	Roller rear 115	11730	1				
	Roller rear 130	11731		1			
	Roller rear 160	11733			1		
	Roller rear 190	11734				1	
	Roller rear 225	11735					1
5a	Roller bracket left	10667	1	1			
	Roller bracket left	10699			1	1	1
5b	Roller bracket right	10767	1	1			



Nr.	Part	Code	*	*	*	1900	2250
5b	Bracket roller right	10848			1	1	1
5c	Scraper 115	11748	1				
	Scraper 130	10741		1			
	Scraper 160	10742			1		
	Scraper 190	10743				1	
	Scraper 225	10744					1
6	Bearing with casing	11641	2	2			
	Bearing with casing	11642			2	2	2
7	Flap rod 115	10746	1				
	Flap rod 130	10747		1			
	Flap rod 160	10748			1		
	Flap rod 190	10749				1	
	Flap rod 225	11013					1
8	Belt shield	10973	1	1	1	1	1
9	Blocking rod-mech.	10750	1	1	1	1	1
10	Blocking rod-hydr.	11644	1	1	1	1	1
11	Bearing casing left	10753	1	1	1	1	1
12	Bearing casing right	10754	1	1	1	1	1
13	Pulley 130	10762	1	1			
	Pulley 130	11912			1	1	
	Pulley 130	11848					1
14	Elve rotor clutch	10760	1	1	1	1	1
15	Pulley 180	10756	1	1			
	Pulley 180	11915			1	1	
	Pulley 180	10757					1
16	Elve drive clutch	10759	1	1	1	1	1
17	Skids left	10958	1	1	1	1	1
17	Skids right	10959	1	1	1	1	1
19	Washer	12241	1	1	1	1	1
20	Safety pin	11598	1	1	1	1	1



Nr	Part	Code	*	*	*	1900	2250
20a	Safety pin	11597	1	1	1	1	1
21	Pivot pin 19/25	10991	1	1	1	1	1
22	Pivot pin 22/28	11015			2	2	2
22a	Pivot pin	10940	2	2			
23	Spring safe pin	11618	3	3	3	3	3
24	Safety pin R3	10327	2	2	2	2	2
25	Flap	11435	1				
	Flap	11014		1			
	Flap	11434			1		
	Flap	11442				1	
	Flap	10769	8	9	11	13	16
26	Y-blade	10867	28	32	40	48	56
26a	Hammer blade	11806	14	16	20	24	28
27	Y-blade sleeve	10770	14	16	20	24	28
28	Y-distant sleeve	10771	56	64	80	96	112
29	Belt SPB 1250	10447	2	2	3	3	4
30	Bearing 1309	11054	2	2	2	2	2
31	Slide pc 45, ext.	10404	2	2	2	2	2
32	Slide pc 100, int.	10417	1	1	1	1	1
34	Bearing casing1	10934	1	1	1	1	1
35	Bearing casing2	10935	1	1	1	1	1
36	Bolt 10/30	10259	1	1	1	1	1
36a	Bolt 10/65	10264	2	2	2	2	2
37	Bolt 8/15	11624	4	4	4	4	4
38	Bolt 14/40	11835	4	4	4	4	4
39	Bolt 10/35	10260	4	4	4	4	4
40	Bolt 12/30	10998	4	4	4	4	4
40a	Bolt 12/35	10270	1	1	1	1	1
41	Bolt 14/50	11006	1	1	1	1	1
42	Bolt 14/35	10994	16	16	16	16	16
43	Bolt 14/80	12043	14	16	20	24	28



Nr	Part	Code	*	*	*	1900	2250
44	Bolt 16/80	11052	1	1	1	1	1
45	Locknut 14	10204	31	33	37	41	45
46	Locknut 10	10202	8	8	8	8	8
47	Nut 14	10191	4	4	4	4	4
48	Locknut 12	10203	2	2	2	2	2
48a	Nut 24	11886	2	2			
49	Nut 16	10193	1	1	1	1	1
50	Washer flat 10	10219	7	7	7	7	7
51	Washer flat 8	10218	4	4	4	4	4
52	Washer flat 14	10221	21	21	21	21	21
53	Washer flat 12	10220	3	3	3	3	3
54	Spring wash.10	10232	1	1	1	1	1
55	Washer flat 20	10224	1	1	1	1	1
56	Spring wash.14	10234	4	4	4	4	4
57	Spring wash.12	10233	5	5	5	5	5
58	Spring wash.24	11631	2	2			
59	Split pin	10449	1	1	1	1	1
69	Grease nipple	10395	2	2	2	2	2

76.754.02 MISCILLANIOUS PARTS

Part No.	Description	Qty
05.774.07	SERIAL NUMBER PLATE	1
05.227.01	HAMMER DRIVE SCREW	4
43604.01	DECAL – TURBOMOWER	1
43604.03	DECAL – 1900	1
43604.05	DECAL – 2250	1
45645.02	DECAL – BOMFORD	1
41544.04	PTO ASSEMBLY	1