

PM1839

# **TRIM KING**

## **ISMP 1200**

**FLAIL CUTTING HEADS  
BUILT TO W.G.C. 90.125.36 ONLY**

***PARTS MANUAL***

**ISSUE 1**

### **IMPORTANT**

NOTE HERE THE SERIAL NUMBER OF YOUR MACHINE AND ALWAYS QUOTE IT IN ANY COMMUNICATION WITH US OR YOUR DEALER. THIS IS PARTICULARLY IMPORTANT WHEN ORDERING SPARES. REMEMBER TO INCLUDE ALL NUMBERS AND LETTERS.

MACHINE SERIAL NUMBERS \_\_\_\_\_

THE INFORMATION GIVEN THROUGHOUT THIS MANUAL IS CORRECT AT THE TIME OF PUBLICATION. HOWEVER, IN THE COURSE OF CONSTANT DEVELOPMENT OF BOMFORD TURNER MACHINES, CHANGES IN SPECIFICATION ARE INEVITABLE. SHOULD YOU FIND THE INFORMATION GIVEN IN THIS BOOK TO BE AT VARIANCE WITH THE MACHINE IN YOUR POSSESSION, YOU ARE ADVISED TO CONTACT THE BOMFORD TURNER SERVICE DEPARTMENT WHERE UP-TO-DATE INFORMATION WILL BE PROVIDED.

THE MANUAL CAN CONTAIN STANDARD AND OPTIONAL FEATURES AND IS NOT TO BE USED AS A MACHINE SPECIFICATION.

THE MACHINE HAS BEEN TESTED AND IS CONSIDERED SAFE IF CAREFULLY USED. ENSURE YOUR OPERATOR IS PROPERLY TRAINED IN ITS USE AND MAINTENANCE.

---

### **IMPORTANT**

NOTEZ ICI LES NUMEROS DE SERIE DE VOTRE MACHINE ET MENTIONNEZ LES DANS TOUTE COMMUNICATION AVEC NOS SERVICES OU VOTRE REVENDEUR. CECI EST IMPORTANT POUR LA COMMANDE DE PIECES DETACHEES. PENSEZ A NOTER TOUS LES NUMEROS ET TOUTES LES LETTERS.

NUMEROS DE SERIE DE LA MACHINE \_\_\_\_\_

LES INFORMATIONS DONNEES DANS CE MANUEL SONT CORRECTES CEPENDANT, DU FAIT DE DEVELOPPEMENT CONSTANT DES MACHINES BOMFORD TURNER.

CHANGEMENTS DANS LES CARACTERISTIQUES SONT INEVITABLES.

SI VOUS TROUVEZ QUE LES INFORMATIONS DONNEES NE CORRESPONDENT PAS A VOTRE MACHINE VEUILLEZ CONTACTER LE SERVICE DES REPARATIONS OU DES INFORMATIONS PLUS RECENTES VOUS SERONT DONNEES.

CE MANUEL PEUT MONTRER DES CARACTERISTIQUES OPTIONNELLES ET NE PEUT PAS ETRE CONSIDERE COMME SPECIFICATION DE LA MACHINE.

CETTE MACHINE A ETE TESTEE, ET ELLE EST CONSIDEREE COMME FIABLE A CONDITION D'UNE BONNE UTILISATION. ASSUREZ-VOUS QUE VOTRE OPERATEUR EST QUALIFIE EN CE QUI CONCERNE L'UTILISATION DE LA MACHINE AINSI QUE SON ENTRETIEN.

---

### **WICHTIG**

TRAGEN SIE HIER DIE SERIENNUMMERN IHRER MASCHINE EIN UND GEBEN SIE DIESE IMMER AN, WENN SIE SICH AN UNS ODER IHREN HÄNDLER WENDEN. DAS IST BESONDERS BEI ERSATZTEILBESTELLUNGEN WICHTIG. VERGESSEN SIE NICHT, ALLE ZAHLEN UND BUCHSTABEN ZU NOTIEREN.

SERIENNUMMERN DER MASCHINE \_\_\_\_\_

DIE ANGABEN INDIESEM HANDBUCH SIND BEI VERÖFFENTLICHUNG KORREKT. AUFGRUND DER KONSTANTEN WEITERENTWICKLUNG VON BOMFORD TURNER MASCHINEN SIND JEDOCHÄNDERUGDEN IN DER SPEZIFIKATION UNVERMEIDLICH. WENN DIE INFORMATION IN DIESEM HANDBUCH NICHT MIT IHRER MASCHINE ÜBEREINSTIMMEN, NEHMEN SIE BITTE KONTAKT MIT DER BOMFORD TURNER KUNDENDIENSTABTEILUNG AUF, DIE IHNEN GERNE DIE AKTUELLEN INFORMATION ZUKOMMEN LÄSST.

DAS HANDBUCH KANN SOWOHL BESCHREIBUNGEN FÜR DIE STANDARD AUSFÜHRUNG ALS AUCH FÜR ZUBEHÖR ENTHALTEN UND IST NICHT ALS MASCHINENSPEZIFIKATION ZU VERWENDET.

DIE MASCHINE IST GETESTET UND BEI SACHGEMÄSSEM BETRIEB ALS SICHER BEFUNDEN WORDEN. SORGEN SIE DAFÜR, DASS IHR BEDIENPERSONAL IN ANWENDUNG UND WARTUNG RICHTIG GESCHULT WIRD.

## TRIM KING ISMP 1200

*PAGE AND ILLUSTRATION NUMBERS SHOWN ARE USED ONLY FOR REFERENCE PURPOSES AND SHOULD NOT BE USED FOR ORDERING SPARE PARTS.*

*PLEASE ENSURE THE CORRECT PART NUMBER AND DESCRIPTION IS GIVEN WHEN ORDERING SPARE PARTS.*

*APPLICABLE TO HEADS BUILT TO W.G. CODE 90.125.36 ONLY.  
COMMENCING FROM SERIAL NUMBER 2742 LA/00*

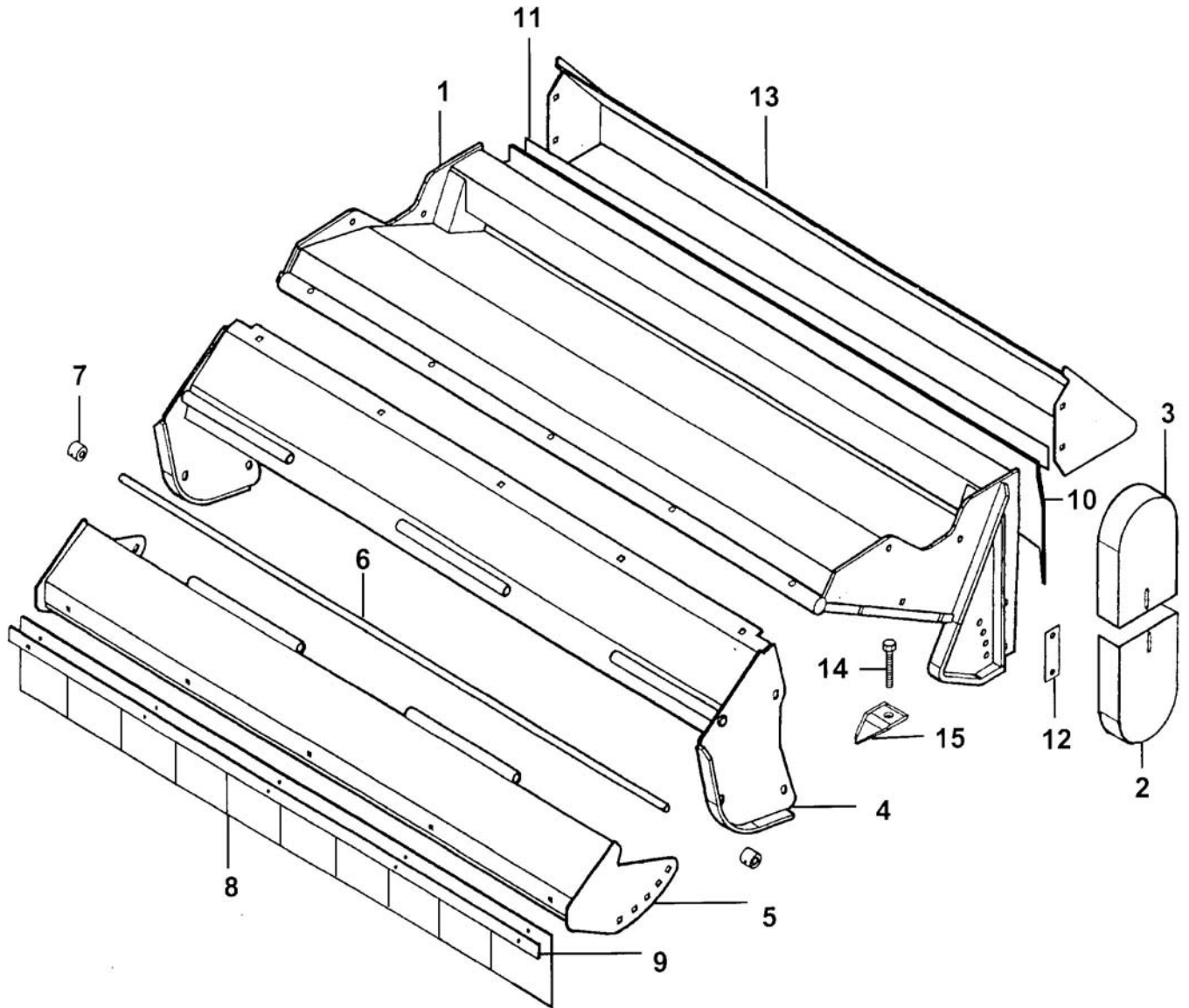
<b>Page No.</b>	<b>Section</b>
2 - 1 TO 2 - 2	COWL ASSEMBLY ISMP
3 - 1 TO 3 - 2	BEARING ASSEMBLY ISMP
4 - 1 TO 4 - 2	ROLLER ASSEMBLY
5 - 1 TO 5 - 2	MOTOR ASSEMBLY 125 LITRE
6 - 1 TO 6 - 2	ROTOR SHAFT ASSEMBLY
7 - 1 TO 7 - 2	DECALS

### **IMPORTANT**

THIS MACHINE IS DESIGNED FOR VEGETATION CONTROL  
AND MUST NOT BE USED FOR ANY OTHER PURPOSE

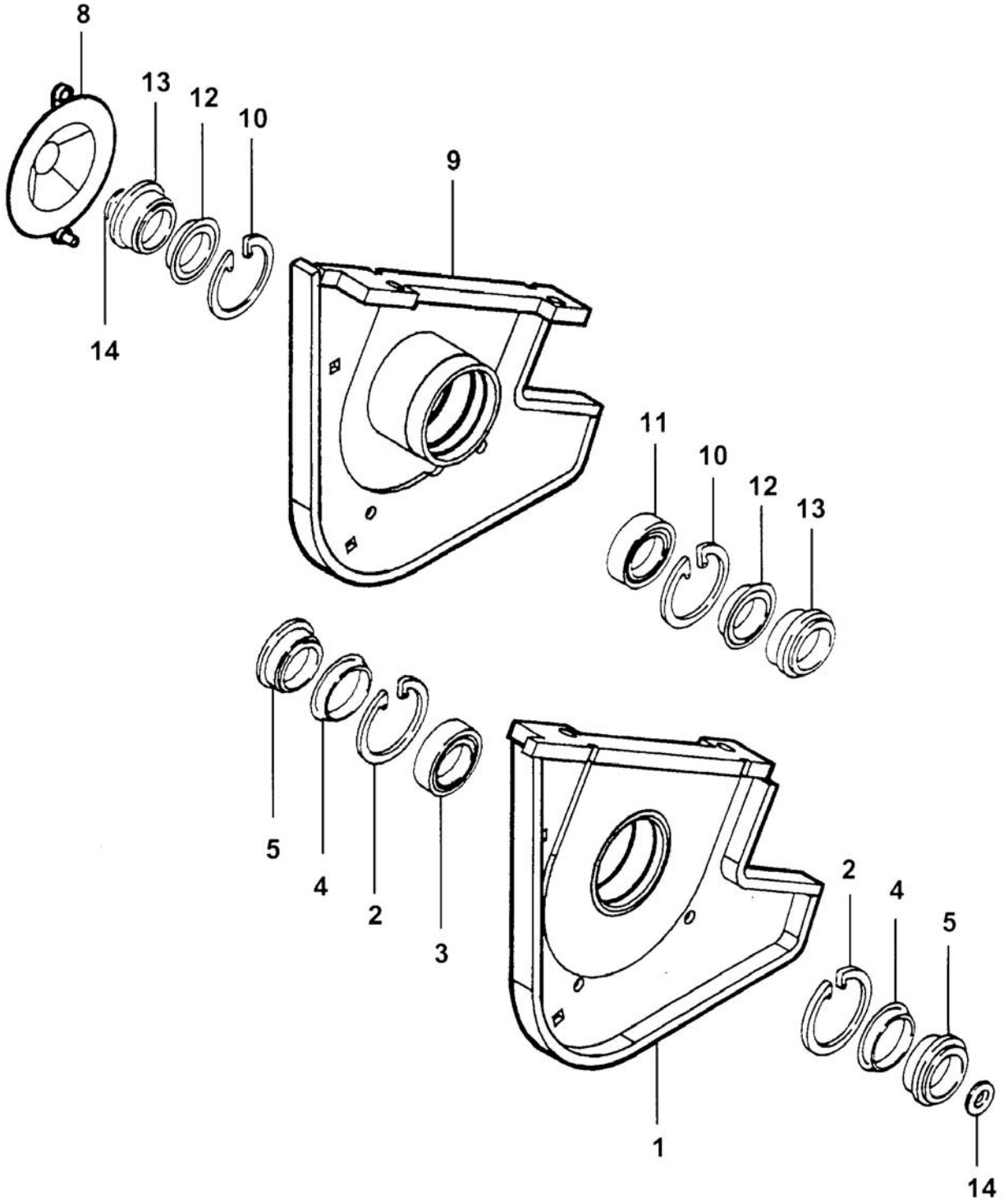
IT IS POTENTIALLY HAZARDOUS TO FIT OR USE  
ANY PARTS OTHER THAN GENUINE BOMFORD TURNER PARTS

THE COMPANY DISCLAIMS ALL LIABILITY FOR THE  
CONSEQUENCES OF SUCH USE WHICH, IN ADDITION,  
VOIDS THE MACHINE WARRANTY



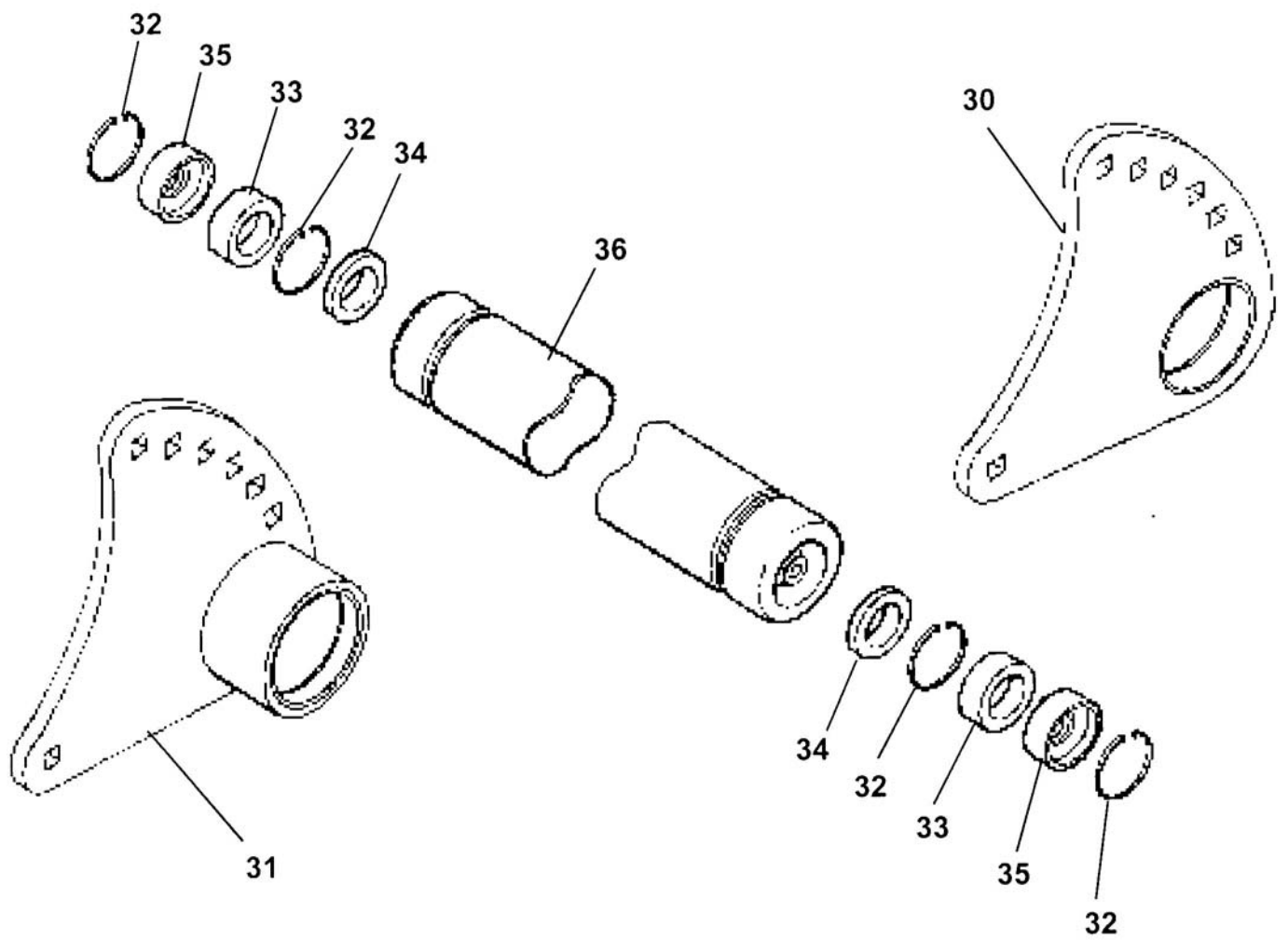
REF	PART NO.	DESCRIPTION	QTY
<b>76.286.09 COWL ISMP ASSY</b>			
01	05.227.01	HAMMER DRIVE SCREW NO.6 X 3/8"	2
01	05.282.03	SPRING WASHER 12MM PLATED	6
01	05.286.03	NUT M12 PLATED	6
01	05.774.06	SERIAL NO.PLATE BOMFORD TURNER	1
01	05.839.26	BOLT CUP SQ M12 X 30 (PLATED)	6
*01	41945.01	COWL - ISMP 1200	1
02	05.264.21	SETSCREW M12 X 20MM PLATED	1
02	05.281.03	FLAT WASHER 12MM PLATED	1
02	05.282.03	SPRING WASHER 12MM PLATED	2
02	05.286.03	NUT M12 PLATED	1
*02	06.205.01	GUARD-BOTTOM DRIVE	1
03	05.264.21	SETSCREW M12 X 20MM PLATED	2
03	05.282.03	SPRING WASHER 12MM PLATED	2
*03	06.222.01	GUARD-TOP DRIVE ( <b>GEAR</b> )	1
04	05.281.03	FLAT WASHER 12MM PLATED	4
04	05.282.03	SPRING WASHER 12MM PLATED	6
04	05.286.03	NUT M12 PLATED	6
04	05.287.02	SELF-LOCKING NUT M10 PLATED	5
04	05.839.24	BOLT CUP SQ M10 X 50 (PLATED)	5
04	05.839.26	BOLT CUP SQ M12 X 30 (PLATED)	6
*04	42299.02	GUARD - FRONT FIXED 1200	1
05	42301.02	GUARD - FRONT ADJUSTMENT 1200	1
06	05.201.17	TENSION PIN 3MM X 25MM PLATED	2
*06	41435.01	PIN PIVOT FRT GUARD	1
07	41436.01	SPACER-PIVOT FRONT GUARD	2
08	42297.01	GUARD - FLEXIBLE FRONT 1200	1
09	05.287.01	NUT M8 (PLATED)	9
*09	09.594.03	BACKING STRIP 1200	1
09	9293054	BOLT CUP SQUARE M8 X 25 (PLATED)	9
10	41884.01	GUARD - FLEXIBLE REAR 1200	1
11	05.287.01	NUT M8 PLATED	9
*11	09.594.03	BACKING STRIP 1200	1
11	9293054	BOLT CUP SQUARE M8 X 25 (PLATED)	5
12	05.282.03	SPRING WASHER 12MM PLATED	4
12	05.286.03	NUT M12 PLATED	4
12	05.839.34	BOLT CUP SQ M12 X 35 (PLATED)	4
*12	41883.01	CLAMP - GUARD	2
13	05.281.01	FLAT WASHER 8MM PLATED	9
13	05.282.03	SPRING WASHER 12MM PLATED	4
13	05.287.01	SELF-LOCKING NUT M8 PLATED	9
13	05.286.03	NUT M12 PLATED	4
13	05.839.	BOLT CUP SQ M12 X 35 (PLATED)	4
*13	41906.03	GUARD - REAR 1200	1
13	9293054	BOLT CUP SQUARE M8 X 25 (PLATE)	9
14	05.286.03	NUT M12 PLATED	2
*14	06.220.01	SETSCREW M12 X 100 PLATED	1
15	05.282.03	SPRING WASHER 12MM PLATED	1
15	05.286.03	NUT M12 PLATED	1
15	05.839.26	BOLT CUP SQ M12 X 30 (PLATED)	1
*15	41.946.01	BRACKET BOLT ADJUSTMENT	1

\*MAIN PART IN GROUP, RELATED PARTS HAVE SAME REFERENCE NUMBER



REF	PART NO.	DESCRIPTION	QTY
<b>76.118.02 BEARING ASSEMBLY</b>			
01	05.775.01	BOLT M16 X 50MM (10.9) PLATED	2
01	05.953.03	GREASE NIPPLE M10	1
01	05.968.04	S.LOCKING NUT M16 (FINE) PLATE	2
*01	41947.01	BEARING HOUSING LH	1
02	05.959.07	CIRCLIP - INT 85MM DIA	2
03	04.163.04	BEARING-SPH.ROLLER 45MM BORE	1
04	06.909.01	SPACER-SEAL	2
05	06.910.01	COLLAR-SEAL	2
08	05.282.03	SPRING WASHER 12MM PLATED	2
08	05.286.03	NUT M12 PLATED	2
08	05.839.27	BOLT CUP SQ M12 X 30 (PLATED)	1
*08	41961.01	GUARD - NON DRIVE ISMP	1
09	05.775.01	BOLT M16 X 50MM (10.9) PLATED	2
09	05.953.03	GREASE NIPPLE M10	1
09	05.968.04	S.LOCKING NUT M16 (FINE) PLATE	2
09	41947.02	BEARING HOUSING RH	1
10	05.959.07	CIRCLIP - INT 85MM DIA	2
11	04.163.04	BEARING-SPH.ROLLER 45MM BORE	1
12	06.909.01	SPACER-SEAL	2
13	06.910.01	COLLAR-SEAL	2
14	04.252.01	WASHER 65 O/DX17 I/DX8MM	2
*14	05.264.35	SETSCREW M16 X 40MM PLATED	2
14	05.283.04	SHAKEPROOF WASHER 16MM PLATED	2

\*MAIN PART IN GROUP, RELATED PARTS HAVE SAME REFERENCE NUMBER



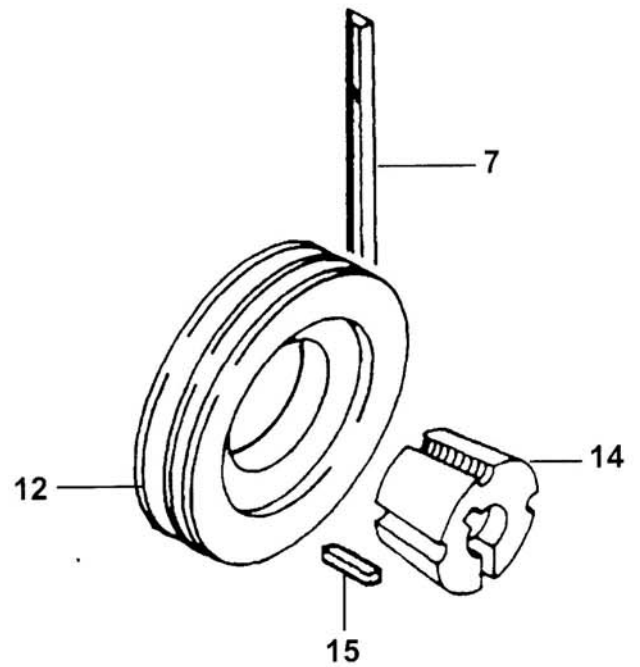
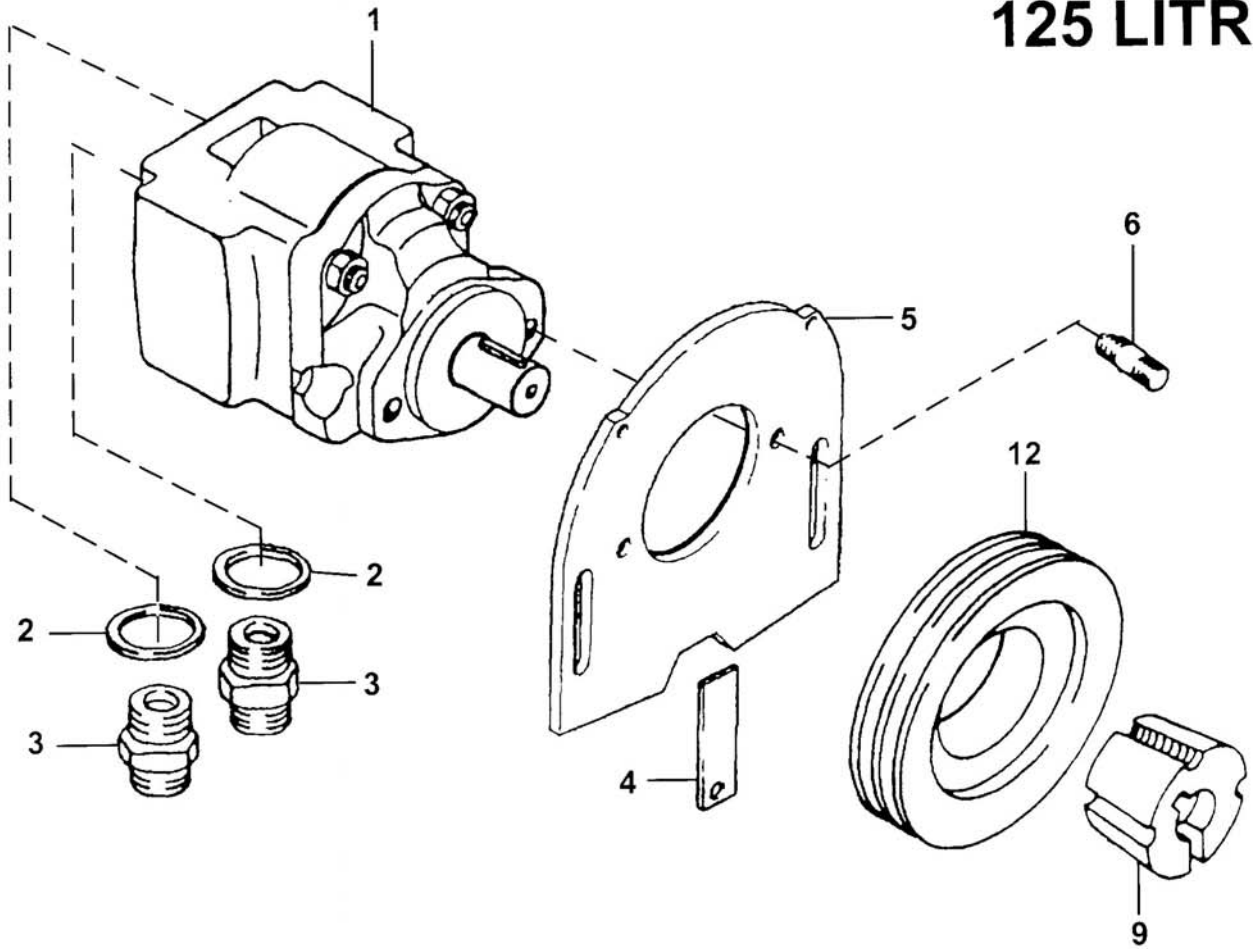


---

REF	PART NO.	DESCRIPTION	QTY
		<b>76.284.01 ROLLER ASSEMBLY 150 DIA</b>	
30	41897.01	BRACKET - ROLLER 150 LH	1
31	41897.02	BRACKET - ROLLER 150 RH	1
32	05.959.05	CIRCLIP - INT 62MM DIA	4
33	42954.01	BEARING - D/ROW BALL 30MM BORE	2
34	04.164.04	SEAL-LIP 40DIA X 10MM	2
35	05.953.01	GREASE NIPPLE M6	4
35	41851.01	CAP - BEARING RETAINER	2
36	05.234.01	WASHER 44.5 X 13 X 5MM PLATED	2
36	05.282.03	SPRING WASHER 12MM PLATED	2
36	05.625.10	SKT CAPSCRW M12X30DOME HD PLT	2
*36	42955.04	ROLLER 150 DIA - 1200	1

\*MAIN PART IN GROUP, RELATED PARTS HAVE SAME REFERENCE NUMBER

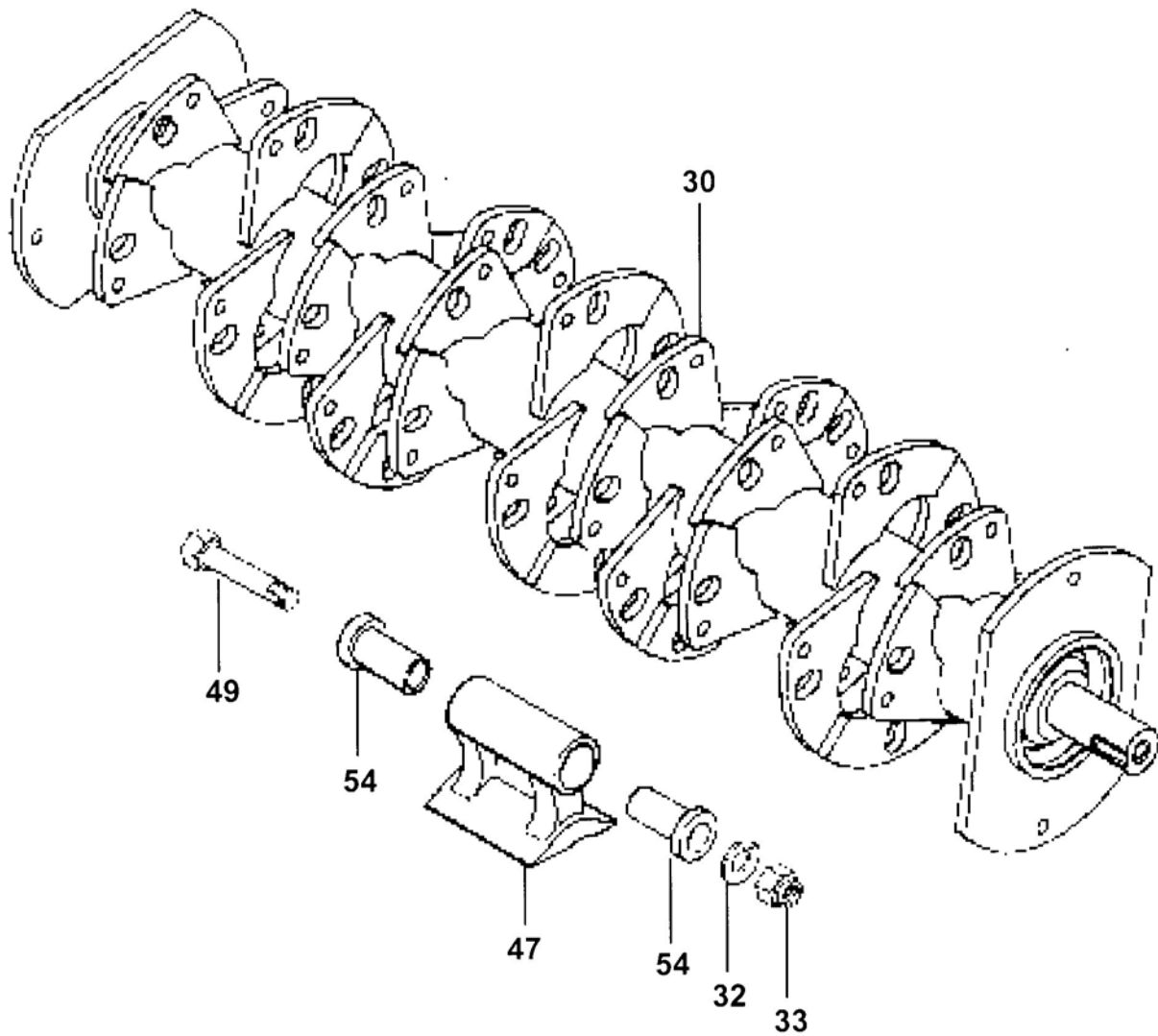
# 125 LITRE



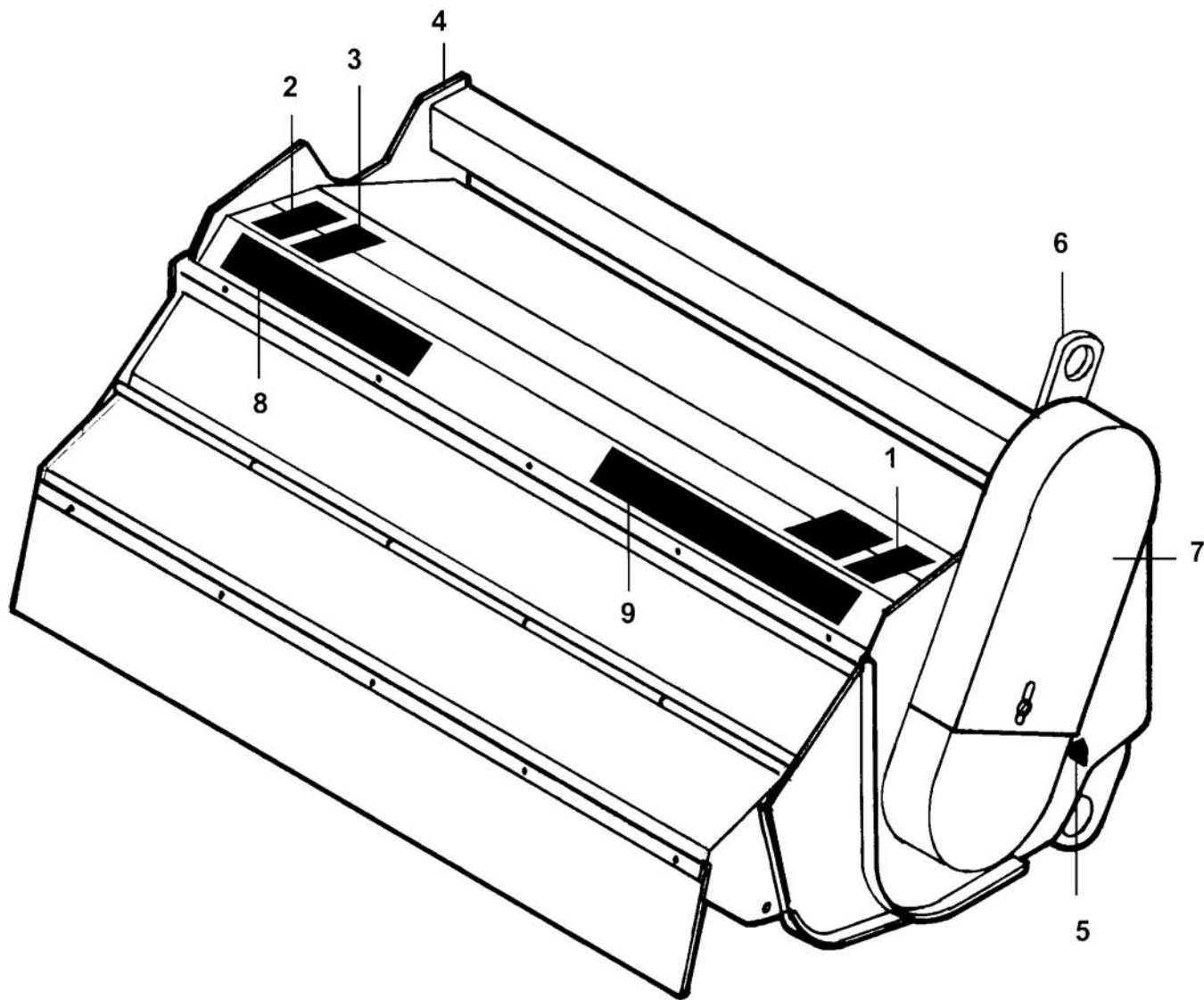
REF	PART NO.	DESCRIPTION	QTY
<b>STANDARD 1200 AND ISMP</b>			
<b>76.285.05 MOTOR 125L PULLEY &amp; BELT</b>			
01	01.071.13	KEY-SEP 1/4" X 1/4" X 1"	-
01	09.773.02	SEAL KIT FOR 09.773 MOTOR	-
*01	09.773.04	MOTOR ULTRA 2TR044	1
01	41905.02	DECAL - 125	1
02	05.290.06	BONDED SEAL 3/4"BSP	2
03	05.373.01	ADAPTOR 3/4"BSP X 1"BSP	2
04	07.833.01	PLATE - COVER	1
05	05.281.03	FLAT WASHER 12MM PLATED	2
05	05.282.03	SPRING WASHER 12MM PLATED	2
05	05.286.03	NUT M12 PLATED	2
05	05.625.12	SOCKET DOMED SCREW M12X35 PLT	2
*05	41893.01	PLATE - MOTOR MOUNTING GEAR	1
*06	04.282.56	STUD M10 X 37MM	2
06	05.282.02	SPRING WASHER 10MM PLATED	2
06	05.286.02	NUT M10 PLATED	2
07	05.299.36	V-BELT XPA 1060 QUAD POWER	3
08	03.795.01	PULLEY-VEE 160MM PCD X 3SPA	1
09	05.424.07	TAPER-LOCK 1"BORE (2517)	1
10	05.424.17	TAPER-LOCK 45MM BORE (2517)	1
11	05.960.13	KEY-S/REP 14MM X 9MM X 45MM	1
12	03.795.03	PULLEY-VEE 140MM PCD X 3SPA	1

\*MAIN PART IN GROUP, RELATED PARTS HAVE SAME REFERENCE NUMBER

# ISMP



REF	PART NO	DESCRIPTION	QTY
	<b>76.287.78</b>	<b>ROTOR SHAFT ASSEMBLY - ISMP</b>	
30	43544.01	ROTOR SHAFT ASSEMBLY	1
32	05.282.04	SPRING WASHER 16MM PLATED	24
33	05.968.07	NUT 'S' LOCK M16 X 1.5 (FINE)	24
47	42594.01	FLAIL - BUSHMASTER 26	24
49	05.775.14	BOLT SPECIAL M16 X 142	24
54	42598.03	COLLAR-PIVOT	48



---

REF	PART NO.	DESCRIPTION	QTY
<b>72.855.03 DECALS - HEAD</b>			
01	09.821.04	DECAL - DANGER THROWN DEBRIS	1
02	09.821.05	DECAL - CUTTING HEAD DANGER	1
03	09.821.08	DECAL - SAFEWORKING ON HEAD	1
04	09.821.10	DECAL - KEEP NUTS TIGHT	1
05	09.810.02	DECAL - GREASE (40 HOURS)	4
06	09.843.02	DECAL - LIFT POINT 350 KG	2
07	41.054.01	DECAL - HEAD GUARDING	1
08	09.837.01	DECAL - BOMFORD	1
09	41582.03	DECAL - TRIM-KING	1