

PM1801

TRIM KING
ISMP
FLAIL CUTTING HEADS

PARTS MANUAL
ISSUE 8

IMPORTANT

NOTE HERE THE SERIAL NUMBER OF YOUR MACHINE AND ALWAYS QUOTE IT IN ANY COMMUNICATION WITH US OR YOUR DEALER. THIS IS PARTICULARLY IMPORTANT WHEN ORDERING SPARES. REMEMBER TO INCLUDE ALL NUMBERS AND LETTERS.

MACHINE SERIAL NUMBERS _____

THE INFORMATION GIVEN THROUGHOUT THIS MANUAL IS CORRECT AT THE TIME OF PUBLICATION. HOWEVER, IN THE COURSE OF CONSTANT DEVELOPMENT OF BOMFORD TURNER MACHINES, CHANGES IN SPECIFICATION ARE INEVITABLE. SHOULD YOU FIND THE INFORMATION GIVEN IN THIS BOOK TO BE AT VARIANCE WITH THE MACHINE IN YOUR POSSESSION, YOU ARE ADVISED TO CONTACT THE BOMFORD TURNER SERVICE DEPARTMENT WHERE UP-TO-DATE INFORMATION WILL BE PROVIDED. THE MANUAL CAN CONTAIN STANDARD AND OPTIONAL FEATURES AND IS NOT TO BE USED AS A MACHINE SPECIFICATION.

THE MACHINE HAS BEEN TESTED AND IS CONSIDERED SAFE IF CAREFULLY USED. ENSURE YOUR OPERATOR IS PROPERLY TRAINED IN ITS USE AND MAINTENANCE.

IMPORTANT

NOTEZ ICI LES NUMEROS DE SERIE DE VOTRE MACHINE ET MENTIONNEZ LES DANS TOUTE COMMUNICATION AVEC NOS SERVICES OU VOTRE REVENDEUR. CECI EST IMPORTANT POUR LA COMMANDE DE PIECES DETACHEES. PENSEZ A NOTER TOUS LES NUMEROS ET TOUTES LES LETTERS.

NUMEROS DE SERIE DE LA MACHINE _____

LES INFORMATIONS DONNEES DANS CE MANUEL SONT CORRECTES CEPENDANT, DU FAIT DE DEVELOPPEMENT CONSTANT DES MACHINES BOMFORD TURNER.

CHANGEMENTS DANS LES CARACTERISTIQUES SONT INEVITABLES.

SI VOUS TROUVEZ QUE LES INFORMATIONS DONNEES NE CORRESPONDENT PAS A VOTRE MACHINE VEUILLEZ CONTACTER LE SERVICE DES REPARATIONS OU DES INFORMATIONS PLUS RECENTES VOUS SERONT DONNEES.

CE MANUEL PEUT MONTRER DES CARACTERISTIQUES OPTIONNELLES ET NE PEUT PAS ETRE CONSIDERE COMME SPECIFICATION DE LA MACHINE.

CETTE MACHINE A ETE TESTEE, ET ELLE EST CONSIDEREE COMME FIABLE A CONDITION D'UNE BONNE UTILISATION. ASSUREZ-VOUS QUE VOTRE OPERATEUR EST QUALIFIE EN CE QUI CONCERNE L'UTILISATION DE LA MACHINE AINSI QUE SON ENTRETIEN.

WICHTIG

TRAGEN SIE HIER DIE SERIENNUMMERN IHRER MASCHINE EIN UND GEBEN SIE DIESE IMMER AN, WENN SIE SICH AN UNS ODER IHREN HÄNDLER WENDEN. DAS IST BESONDERS BEI ERSATZTEILBESTELLUNGEN WICHTIG. VERGESSEN SIE NICHT, ALLE ZAHLEN UND BUCHSTABEN ZU NOTIEREN.

SERIENNUMMERN DER MASCHINE _____

DIE ANGABEN IN DIESEM HANDBUCH SIND BEI VERÖFFENTLICHUNG KORREKT. AUFGRUND DER KONSTANTEN WEITERENTWICKLUNG VON BOMFORD TURNER MASCHINEN SIND JEDOCHÄNDERUGDEN IN DER SPEZIFIKATION UNVERMEIDLICH. WENN DIE INFORMATION IN DIESEM HANDBUCH NICHT MIT IHRER MASCHINE ÜBEREINSTIMMEN, NEHMEN SIE BITTE KONTAKT MIT DER BOMFORD TURNER KUNDENDIENSTABTEILUNG AUF, DIE IHNEN GERNE DIE AKTUELLEN INFORMATION ZUKOMMEN LÄSST.

DAS HANDBUCH KANN SOWOHL BESCHREIBUNGEN FÜR DIE STANDARD AUSFÜHRUNG ALS AUCH FÜR ZUBEHÖR ENTHALTEN UND IST NICHT ALS MASCHINENSPEZIFIKATION ZU VERWENDET.

DIE MASCHINE IST GETESTET UND BEI SACHGEMÄSSEM BETRIEB ALS SICHER BEFUNDEN WORDEN. SORGEN SIE DAFÜR, DASS IHR BEDIENPERSONAL IN ANWENDUNG UND WARTUNG RICHTIG GESCHULT WIRD.

TRIM KING 1200 AND ISMP 1200

PAGE AND ILLUSTRATION NUMBERS SHOWN ARE USED ONLY FOR REFERENCE PURPOSES AND SHOULD NOT BE USED FOR ORDERING SPARE PARTS.

PLEASE ENSURE THE CORRECT PART NUMBER AND DESCRIPTION IS GIVEN WHEN ORDERING SPARE PARTS.

**For Trim King 1200 and ISMP 1200 Heads with serial numbers commencing from: 1134KA/99
For Trim King Heads with serial numbers prior to above, refer to Parts Manual 1737, issue 11**

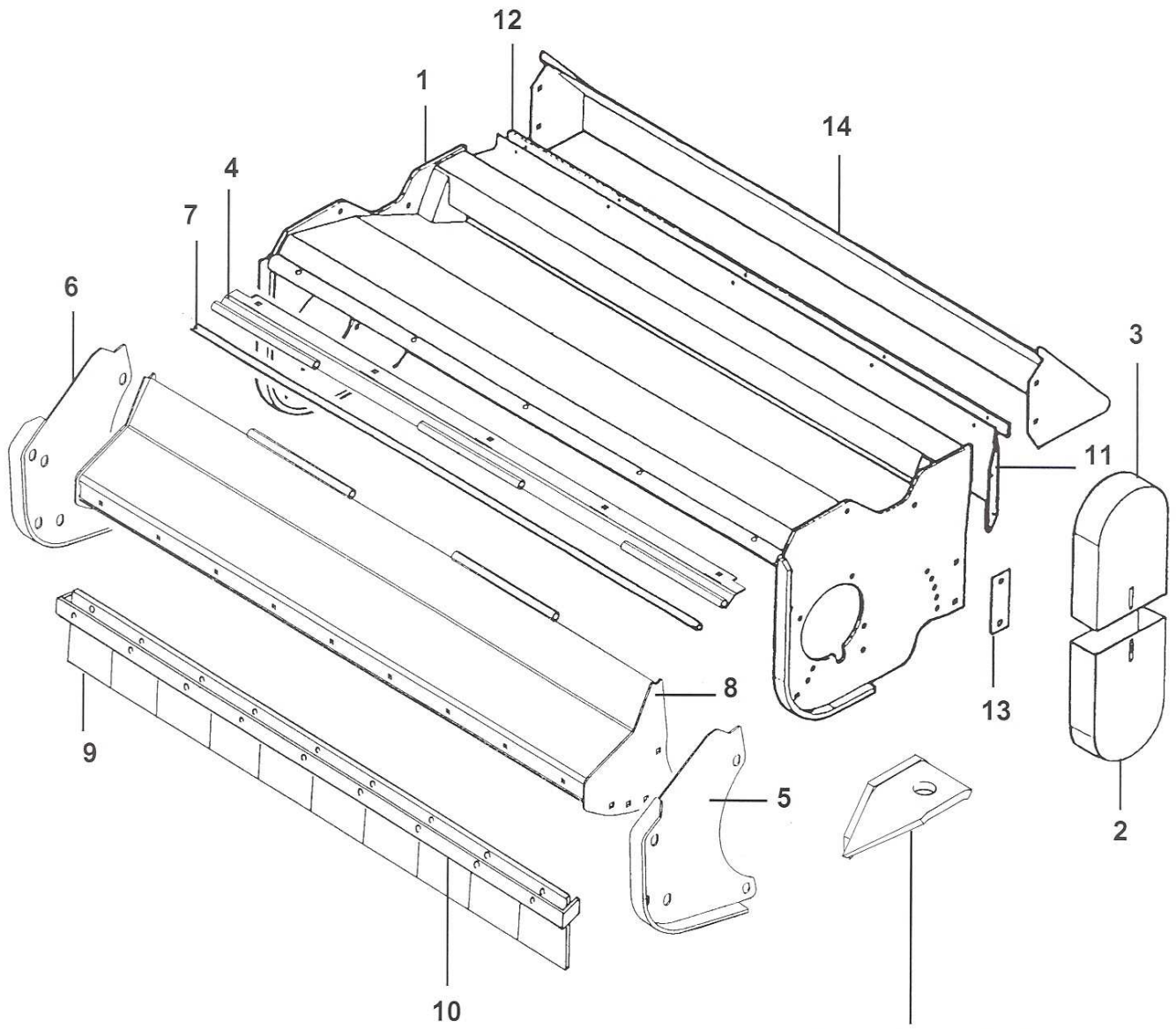
Page No.	Section
2 - 1 TO 2 - 2	COWL ASSEMBLY TRIM KING
2 - 3 TO 2 - 4	COWL ASSEMBLY ISMP
3 - 1 TO 3 - 2	BEARING ASSEMBLY TRIM KING COWL WEAR BRACKET KIT
3 - 3 TO 3 - 4	BEARING ASSEMBLY ISMP
4 - 1 TO 4 - 2	ROLLER ASSEMBLY 1200 AND ISMP
5 - 1 TO 5 - 2	MOTOR ASSEMBLY 84 LITRE
5 - 3 TO 5 - 4	MOTOR ASSEMBLY 100 LITRE
5 - 5 TO 5 - 6	MOTOR ASSEMBLY 125 LITRE
5 - 7 TO 5 - 8	MOTOR ASSEMBLY PISTON
6 - 1 TO 6 - 2	ROTOR SHAFTS 1200 TRIM KING
6 - 3 TO 6 - 4	ROTOR SHAFTS 1200 TRIM KING
6 - 5 TO 6 - 6	ROTOR SHAFTS 1200 TRIM KING
6 - 7 TO 6 - 8	ROTOR SHAFTS 1200 TRIM KING
6 - 9 TO 6 - 10	ROTOR SHAFTS 1200 ISMP
6 - 11 TO 6 - 12	ROTOR SHAFTS 1200 ISMP
6 - 13 TO 6 - 16	ROTOR SHAFTS BUSHMASTER ISMP
7 - 1 TO 7 - 2	DECALS

IMPORTANT

THIS MACHINE IS DESIGNED FOR VEGETATION CONTROL
AND MUST NOT BE USED FOR ANY OTHER PURPOSE

IT IS POTENTIALLY HAZARDOUS TO FIT OR USE
ANY PARTS OTHER THAN GENUINE BOMFORD TURNER PARTS

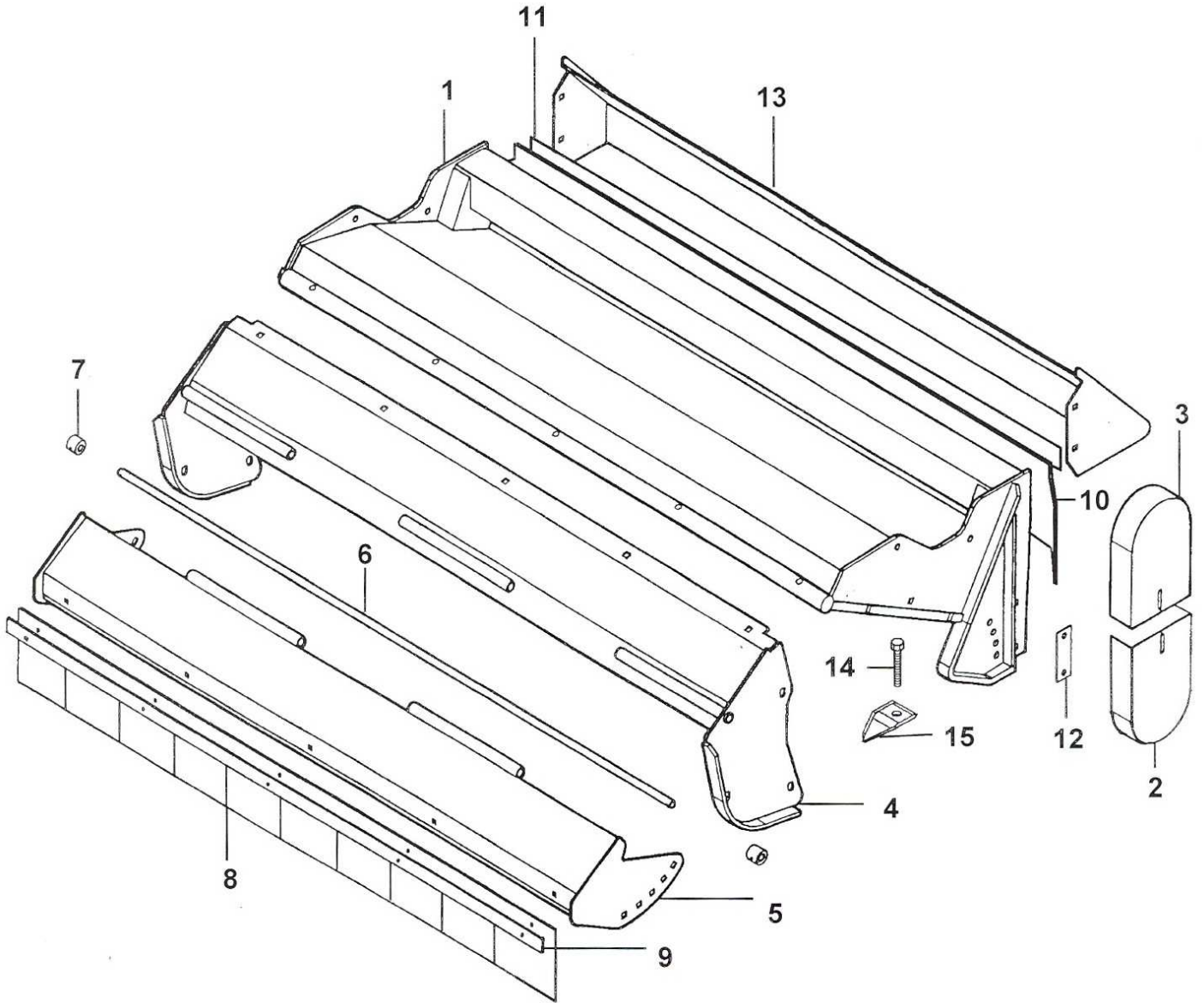
THE COMPANY DISCLAIMS ALL LIABILITY FOR THE
CONSEQUENCES OF SUCH USE WHICH, IN ADDITION,
VOIDS THE MACHINE WARRANTY



ITEM 9 ON ROTOR
BEARING ASSEMBLY
PAGE 3 - 2

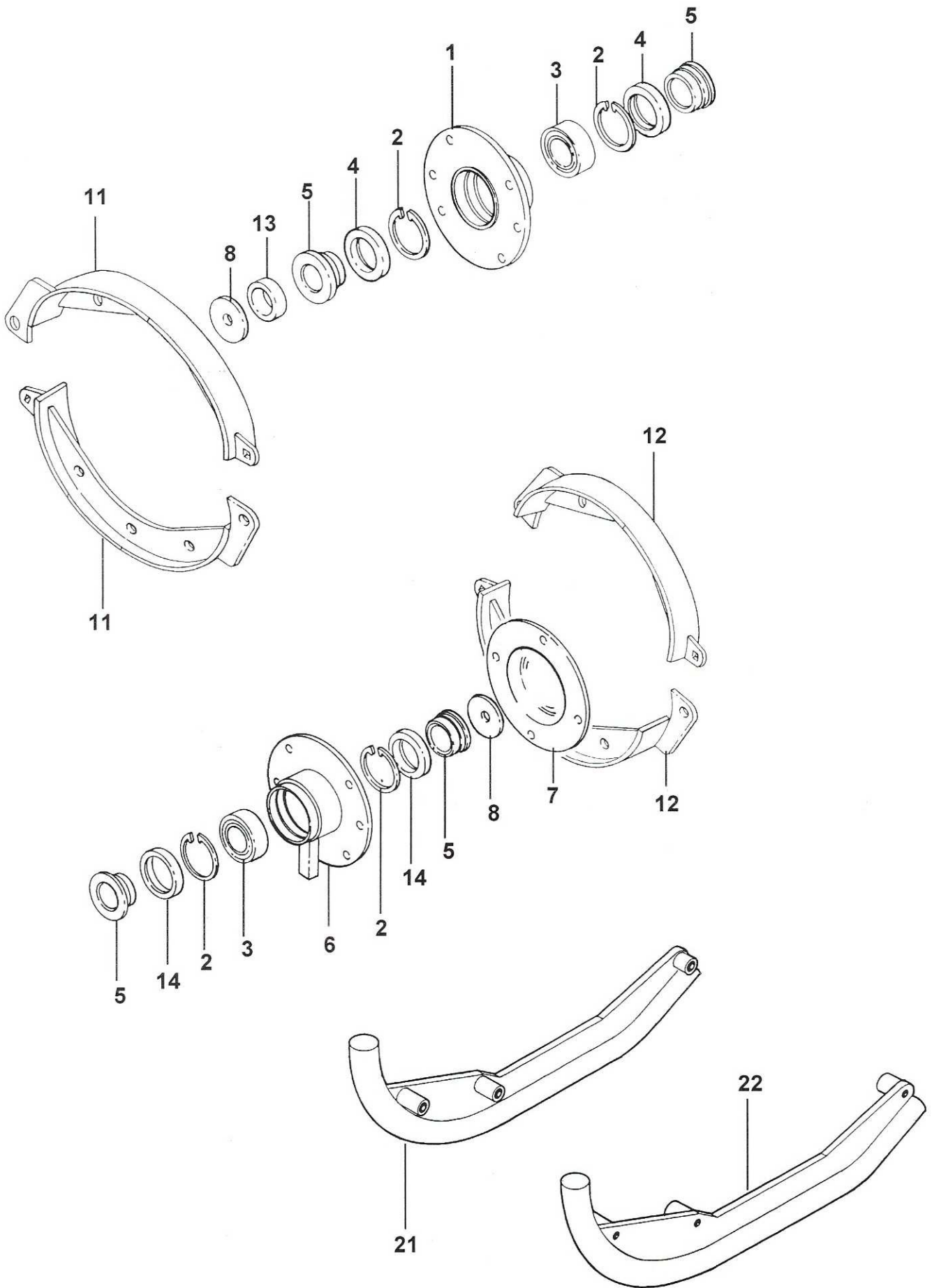
REF	PART NO.	DESCRIPTION	QTY
76.286.03/05/19/22 COWL 1200 ASSEMBLY			
01	05.227.01	HAMMER DRIVE SCREW NO.6 X 3/8"	2
01	05.282.03	SPRING WASHER 12MM PLATED	6
01	05.286.03	NUT M12 PLATED	6
01	05.774.06	SERIAL NO.PLATE BOMFORD TURNER	1
01	05.839.26	BOLT CUP SQ M12 X 30 (PLATED)	6
*01	41885.02	COWL - 1200	1
02	05.264.21	SETSCREW M12 X 20MM PLATED	1
02	05.281.03	FLAT WASHER 12MM PLATED	1
02	05.282.03	SPRING WASHER 12MM PLATED	1
*02	06.205.02	GUARD - DRIVE BOTTOM	1
03	05.264.21	SETSCREW M12 X 20MM PLATED	2
03	05.282.03	SPRING WASHER 12MM PLATED	2
*03	06.222.01	GUARD-TOP DRIVE	1
04	05.287.02	SELF-LOCKING NUT M10 PLATED	5
04	05.839.24	BOLT CUP SQ M10 X 50 (PLATED)	5
*04	42982.01	FRONT GUARD	1
05	05.281.03	FLAT WASHER 12MM PLATED	1
05	05.282.03	SPRING WASHER 12MM PLATED	3
05	05.286.03	NUT M12 PLATED	3
05	05.839.27	BOLT CUP SQ M12 X 25 (PLATED)	3
*05	42981.03	GUARD - SIDEPLATE LH	1
06	05.281.03	FLAT WASHER 12MM PLATED	1
06	05.282.03	SPRING WASHER 12MM PLATED	3
06	05.286.03	NUT M12 PLATED	3
06	05.839.26	BOLT CUP SQ M12 X 30 (PLATED)	1
06	05.839.27	BOLT CUP SQ M12 X 25 (PLATED)	2
*06	42981.04	GUARD - SIDEPLATE RH	1
07	42986.01	PIN PIVOT	1
08	42979.02	GUARD - FRONT 1200	1
09	42297.01	GUARD - FLEXIBLE FRONT 1200	1
10	05.287.01	SELF-LOCKING NUT M8 PLATED	9
*10	42984.02	STRIP - BACKING 1200	1
10	9293054	BOLT CUP SQUARE M8 X 25 (PLATE)	9
11	41884.01	GUARD - FLEXIBLE REAR 1200	1
12	05.287.01	SELF-LOCKING NUT M8 PLATED	9
*12	09.594.03	STRIP - BACKING 1200	1
12	9293054	BOLT CUP SQUARE M8 X 25 (PLATE)	9
13	05.282.03	SPRING WASHER 12MM PLATED	4
13	05.286.03	NUT M12 PLATED	4
13	05.839.26	BOLT CUP SQ M12 X 30 (PLATED)	4
*13	41883.01	CLAMP - GUARD	2
14	05.281.01	FLAT WASHER 8MM PLATED	5
14	05.282.03	SPRING WASHER 12MM PLATED	4
14	05.286.03	NUT M12 PLATED	4
14	05.287.01	SELF-LOCKING NUT M8 PLATED	9
14	05.839.26	BOLT CUP SQ M12 X 30 (PLATED)	4
*14	41906.01	GUARD - REAR 1200	1
14	9293054	BOLT CUP SQUARE M8 X 25 (PLATE)	9

*MAIN PART IN GROUP, RELATED PARTS HAVE SAME REFERENCE NUMBER



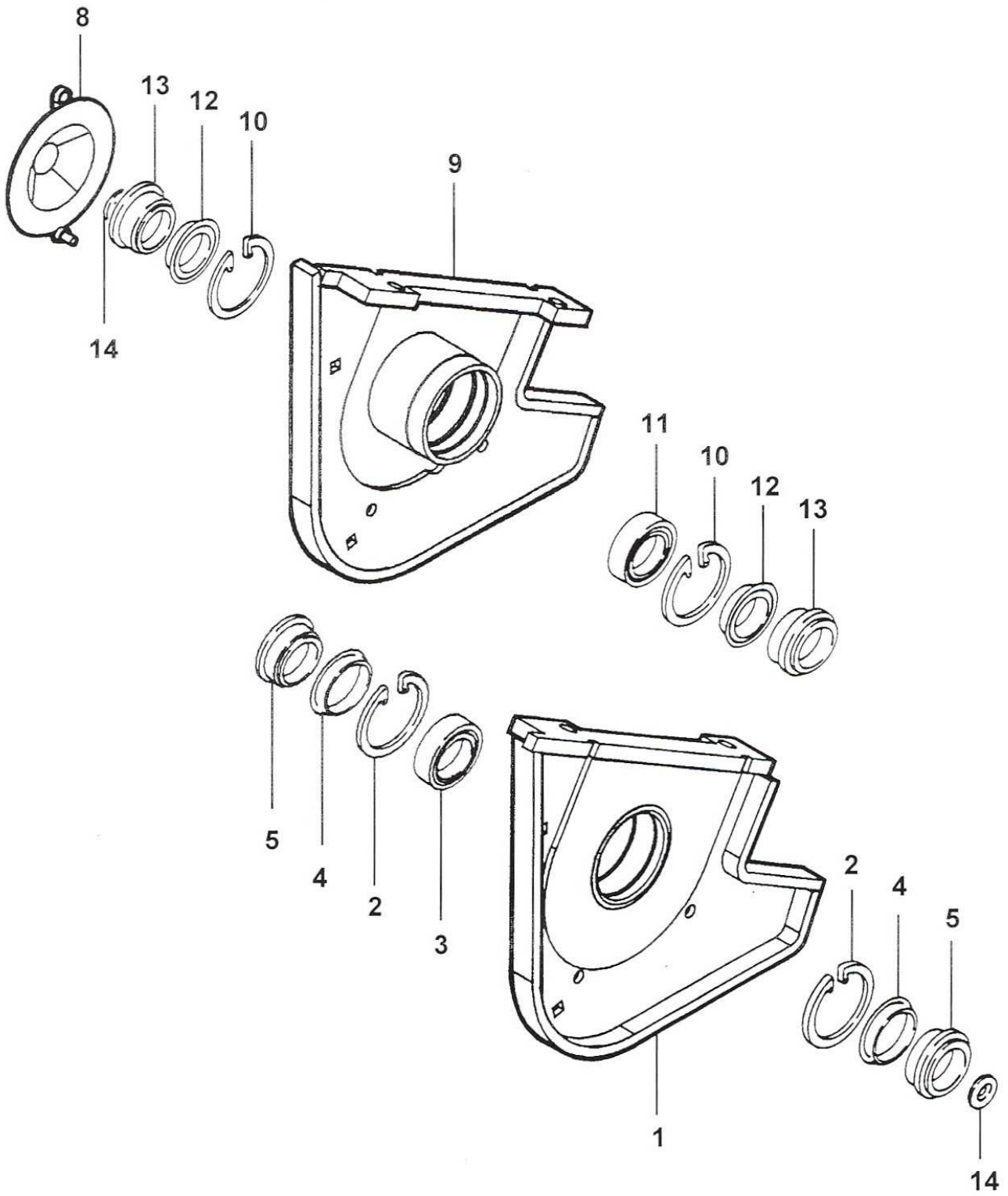
REF	PART NO.	DESCRIPTION	QTY
76.286.09 & 10 COWL ISMP ASSY			
01	05.227.01	HAMMER DRIVE SCREW NO.6 X 3/8"	2
01	05.282.03	SPRING WASHER 12MM PLATED	6
01	05.286.03	NUT M12 PLATED	6
01	05.774.06	SERIAL NO.PLATE BOMFORD TURNER	1
01	05.839.26	BOLT CUP SQ M12 X 30 (PLATED)	6
*01	41945.01	COWL - ISMP 1200	1
02	05.264.21	SETSCREW M12 X 20MM PLATED	1
02	05.281.03	FLAT WASHER 12MM PLATED	1
02	05.282.03	SPRING WASHER 12MM PLATED	2
02	05.286.03	NUT M12 PLATED	1
*02	06.205.01	GUARD-BOTTOM DRIVE	1
03	05.264.21	SETSCREW M12 X 20MM PLATED	2
03	05.282.03	SPRING WASHER 12MM PLATED	2
*03	06.222.01	GUARD-TOP DRIVE (GEAR)	1
*03	41937.01	GUARD-TOP DRIVE (PISTON)	1
04	05.281.03	FLAT WASHER 12MM PLATED	4
04	05.282.03	SPRING WASHER 12MM PLATED	6
04	05.286.03	NUT M12 PLATED	6
04	05.287.02	SELF-LOCKING NUT M10 PLATED	5
04	05.839.24	BOLT CUP SQ M10 X 50 (PLATED)	5
04	05.839.26	BOLT CUP SQ M12 X 30 (PLATED)	6
*04	42299.02	GUARD - FRONT FIXED 1200	1
05	42301.02	GUARD - FRONT ADJUSTMENT 1200	1
06	05.201.17	TENSION PIN 3MM X 25MM PLATED	2
*06	41435.01	PIN PIVOT FRT GUARD	1
07	41436.01	SPACER-PIVOT FRONT GUARD	2
08	42297.01	GUARD - FLEXIBLE FRONT 1200	1
09	05.287.01	NUT M8 (PLATED)	9
*09	09.594.03	BACKING STRIP 1200	1
09	9293054	BOLT CUP SQUARE M8 X 25 (PLATED)	9
10	41884.01	GUARD - FLEXIBLE REAR 1200	1
11	05.287.01	NUT M8 PLATED	9
*11	09.594.03	BACKING STRIP 1200	1
11	9293054	BOLT CUP SQUARE M8 X 25 (PLATED)	5
12	05.282.03	SPRING WASHER 12MM PLATED	4
12	05.286.03	NUT M12 PLATED	4
12	05.839.34	BOLT CUP SQ M12 X 35 (PLATED)	4
*12	41883.01	CLAMP - GUARD	2
13	05.281.01	FLAT WASHER 8MM PLATED	9
13	05.282.03	SPRING WASHER 12MM PLATED	4
13	05.287.01	SELF-LOCKING NUT M8 PLATED	9
13	05.286.03	NUT M12 PLATED	4
13	05.839.	BOLT CUP SQ M12 X 35 (PLATED)	4
*13	41906.03	GUARD - REAR 1200	1
13	9293054	BOLT CUP SQUARE M8 X 25 (PLATE)	9
14	05.286.03	NUT M12 PLATED	2
*14	06.220.01	SETSCREW M12 X 100 PLATED	1
15	05.282.03	SPRING WASHER 12MM PLATED	1
15	05.286.03	NUT M12 PLATED	1
15	05.839.26	BOLT CUP SQ M12 X 30 (PLATED)	1
*15	41.946.01	BRACKET BOLT ADJUSTMENT	1

*MAIN PART IN GROUP, RELATED PARTS HAVE SAME REFERENCE NUMBER



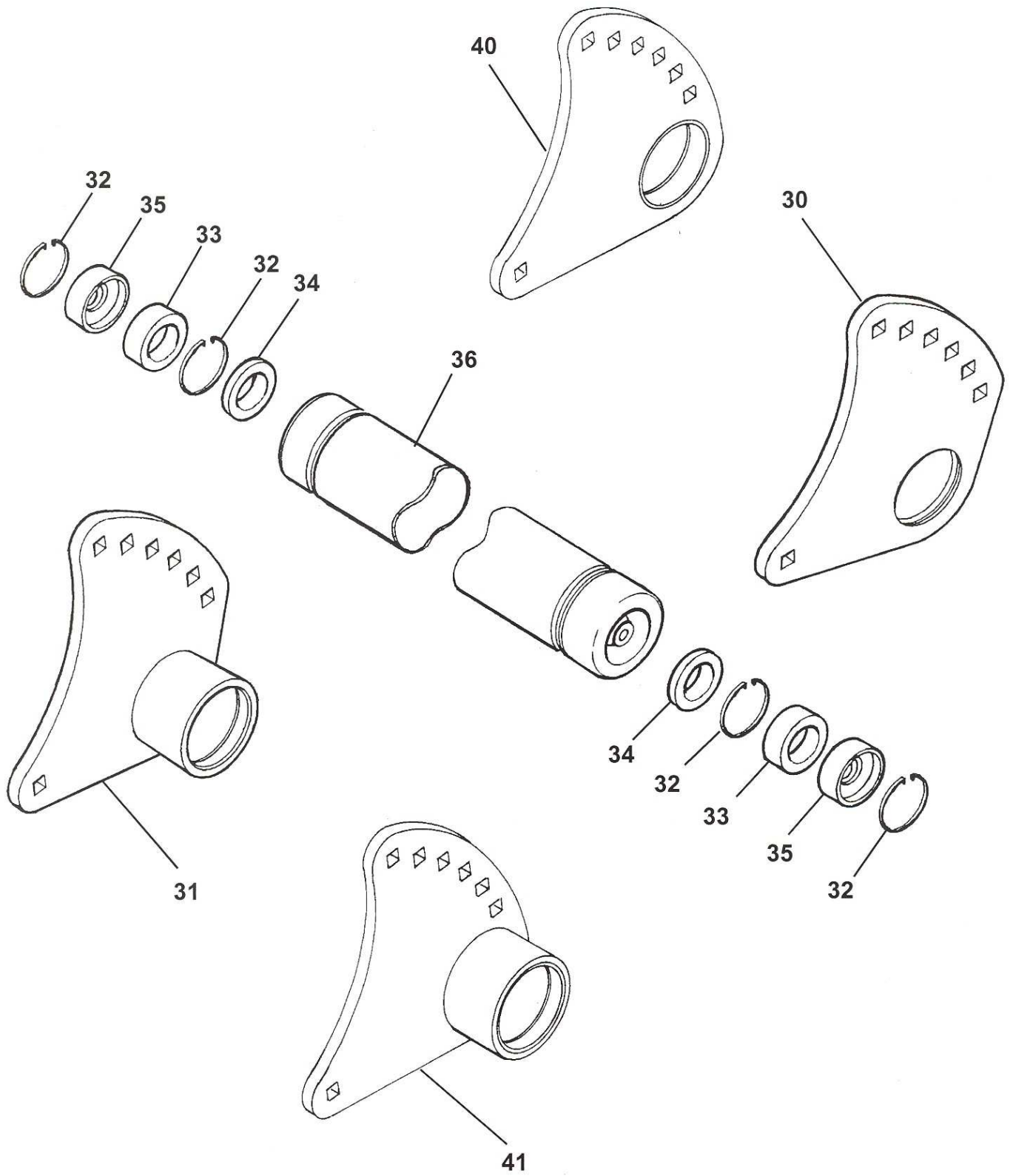
REF	PART NO.	DESCRIPTION	QTY
76.603.01 ROTOR BEARING ASSEMBLY			
01	05.264.23	SETSCREW M12 X 30MM PLATED	4
01	05.282.03	SPRING WASHER 12MM PLATED	4
01	05.286.03	NUT M12 PLATED	4
01	05.953.01	GREASE NIPPLE M6	1
*01	43029.01	BEARING HOUSING	1
02	05.959.07	CIRCLIP - INT 85MM DIA	2
03	04.163.04	BEARING-SPH.ROLLER 45MM BORE	2
04	06.909.01	SPACER-SEAL	2
05	06.910.01	COLLAR-SEAL	4
06	05.282.03	SPRING WASHER 12MM PLATED	4
06	05.286.03	NUT M12 PLATED	4
06	05.625.10	SOCKET CAPSCREW M12 X 30DOME HD	4
*06	43029.02	BEARING HOUSING	1
07	00.876.04	COVER - BEARING NON DRIVE	1
*08	04.252.01	WASHER 65 O/D X 17 I/D X 8MM	2
08	05.264.33	SETSCREW M16 X 30MM PLATED	2
08	05.283.04	SHAKEPROOF WASHER 16MM PLATED	2
09	05.264.21	SETSCREW M12 X 20MM PLATED	1
09	05.282.03	SPRING WASHER 12MM PLATED	1
*09	06.193.03	BRACKET - BOLT ADJUSTMENT	1
10	05.286.03	NUT M12 PLATED	2
10	06.220.01	SETSCREW M12 X 100 PLATED	1
11	05.282.03	SPRING WASHER 12MM PLATED	2
11	05.286.03	NUT M12 PLATED	2
11	05.839.34	BOLT CUP SQ M12 X 35 (PLATED)	2
*11	43030.01	BRACKET - DISC 45 LH	2
12	05.282.03	SPRING WASHER 12MM PLATED	2
12	05.286.03	NUT M12 PLATED	2
12	05.839.34	BOLT CUP SQ M12 X 35 (PLATED)	2
*12	43030.02	BRACKET - DISC 45 RH	2
13	06.216.02	SPACER 55MM O/D	1
14	43272.01	SPACER - SEAL	2
76.370.08/73.370.07 COWL WEAR BRACKET KIT			
21	05.287.03	SELF-LOCKING NUT M12 PLATED	3
21	05.839.30	BOLT CUP SQ M12 X 70 (PLATED)	1
21	05.839.31	BOLT CUP SQ M12 X 80 (SQUARE)	2
*21	41960.04	BRACKET - WEAR RH	1
22	05.287.03	SELF-LOCKING NUT M12 PLATED	3
22	05.839.30	BOLT CUP SQ M12 X 70 (PLATED)	1
22	05.839.31	BOLT CUP SQ M12 X 80 (SQUARE)	2
*22	41960.03	BRACKET - WEAR LH	1

*MAIN PART IN GROUP, RELATED PARTS HAVE SAME REFERENCE NUMBER



REF	PART NO.	DESCRIPTION	QTY
76.118.02 BEARING ASSEMBLY			
01	05.775.01	BOLT M16 X 50MM (10.9) PLATED	2
01	05.953.03	GREASE NIPPLE M10	1
01	05.968.04	S.LOCKING NUT M16 (FINE) PLATE	2
*01	41947.01	BEARING HOUSING LH	1
02	05.959.07	CIRCLIP - INT 85MM DIA	2
03	04.163.04	BEARING-SPH.ROLLER 45MM BORE	1
04	06.909.01	SPACER-SEAL	2
05	06.910.01	COLLAR-SEAL	2
08	05.282.03	SPRING WASHER 12MM PLATED	2
08	05.286.03	NUT M12 PLATED	2
08	05.839.27	BOLT CUP SQ M12 X 30 (PLATED)	1
*08	41961.01	GUARD - NON DRIVE ISMP	1
09	05.775.01	BOLT M16 X 50MM (10.9) PLATED	2
09	05.953.03	GREASE NIPPLE M10	1
09	05.968.04	S.LOCKING NUT M16 (FINE) PLATE	2
09	41947.02	BEARING HOUSING RH	1
10	05.959.07	CIRCLIP - INT 85MM DIA	2
11	04.163.04	BEARING-SPH.ROLLER 45MM BORE	1
12	06.909.01	SPACER-SEAL	2
13	06.910.01	COLLAR-SEAL	2
14	04.252.01	WASHER 65 O/DX17 I/DX8MM	2
*14	05.264.35	SETSCREW M16 X 40MM PLATED	2
14	05.283.04	SHAKEPROOF WASHER 16MM PLATED	2

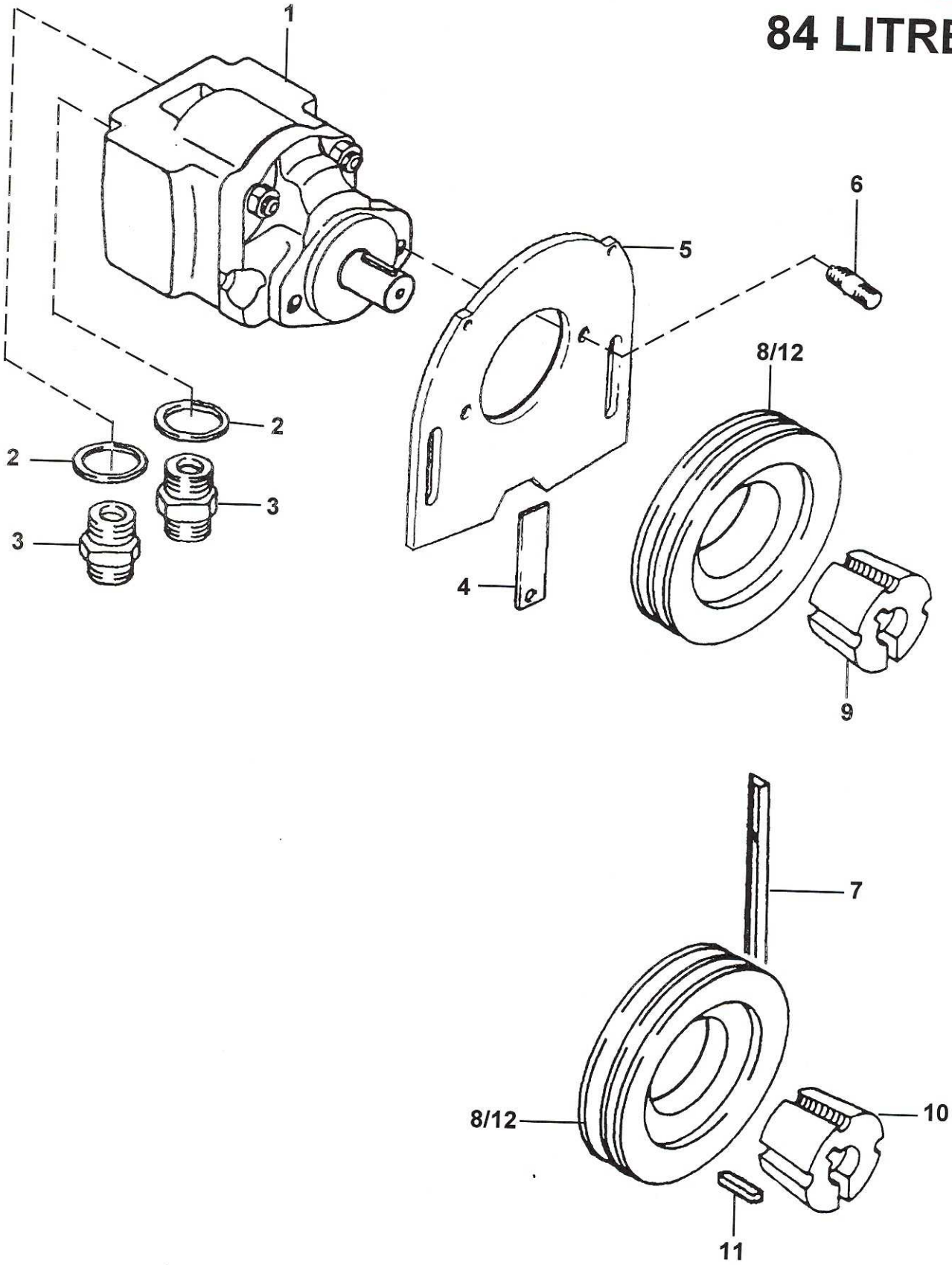
*MAIN PART IN GROUP, RELATED PARTS HAVE SAME REFERENCE NUMBER



REF	PART NO.	DESCRIPTION	QTY
76.284.02/10 ROLLER ASSEMBLY 150 DIA			
30	41897.07	BRACKET - ROLLER 150 LH	1
31	41897.08	BRACKET - ROLLER 150 RH	1
32	05.959.05	CIRCLIP - INT 62MM DIA	4
33	42954.01	BEARING - D/ROW BALL 30MM BORE	2
34	04.164.04	SEAL-LIP 40DIA X 10MM	2
35	05.953.01	GREASE NIPPLE M6	4
35	41851.01	CAP - BEARING RETAINER	2
36	05.234.01	WASHER 44.5 X 13 X 5MM PLATED	2
36	05.282.03	SPRING WASHER 12MM PLATED	2
36	05.625.10	SKT CAPSCRW M12X30DOME HD PLT	2
*36	42955.04	ROLLER 150 DIA - 1200	1
36	42955.05	ROLLER 150 DIA - 1500	1
76.284.04/11 ROLLER ASSY 115 DIA			
40	41975.05	BRACKET - ROLLER 115 LH	1
41	41975.06	BRACKET - ROLLER 115 RH	1
32	05.959.05	CIRCLIP - INT 62MM DIA	4
33	42954.01	BEARING - D/ROW BALL 30MM BORE	2
34	04.164.04	SEAL-LIP 40DIA X 10MM	2
35	05.953.01	GREASE NIPPLE M6	4
35	41851.01	CAP - BEARING RETAINER	2
36	05.234.01	WASHER 44.5 X 13 X 5MM PLATED	2
36	05.282.03	SPRING WASHER 12MM PLATED	2
36	05.625.10	SKT CAPSCRW M12X30DOME HD PLT	2
*36	42056.01	ROLLER 115 DIA - 1200	1
36	42056.02	ROLLER 115 DIA - 1500	1

*MAIN PART IN GROUP, RELATED PARTS HAVE SAME REFERENCE NUMBER

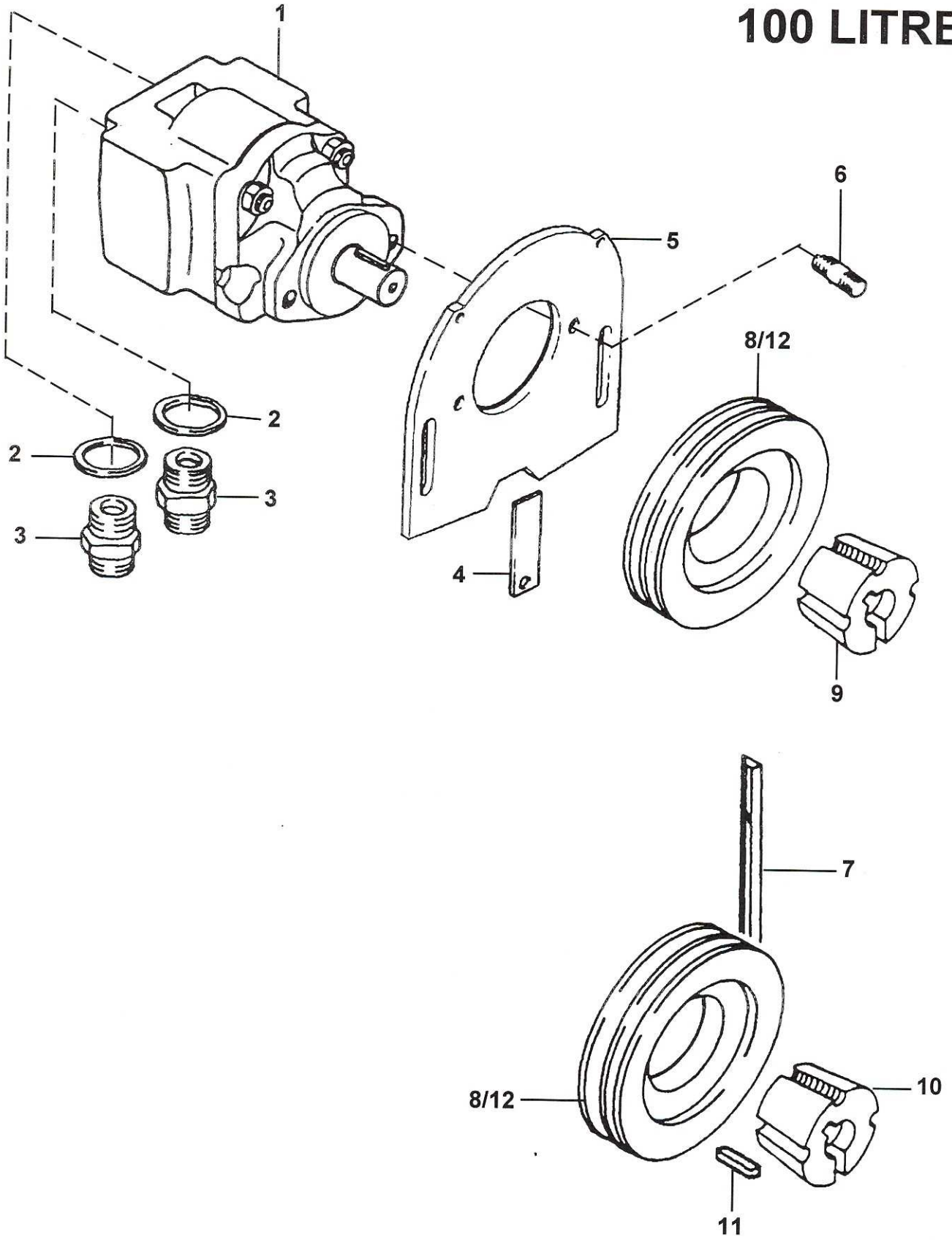
84 LITRE



REF	PART NO.	DESCRIPTION	QTY
STANDARD 1200 AND ISMP			
76.285.03 & 07 MOTOR 84L PULLEY & BELT			
01	01.071.13	KEY-SEP 1/4"X1/4"X1"	-
*01	09.773.05	MOTOR ASSEMBLY	1
01	09.773.02	SEAL KIT FOR 09.773 MOTOR	-
02	05.290.06	BONDED SEAL 3/4" BSP	2
03	05.373.01	ADAPTOR 3/4"BSP X 1"BSP	2
04	07.833.01	PLATE - COVER	1
05	05.281.03	FLAT WASHER 12MM PLATED	2
05	05.282.03	SPRING WASHER 12MM PLATED	2
05	05.286.03	NUT M12 PLATED	2
05	05.625.12	SOCKET DOMED SCREW M12 X 35 PLT	2
*05	41893.01	PLATE - MOTOR MOUNTING GEAR	1
*06	04.282.56	STUD M10 X 37MM	2
06	05.282.02	SPRING WASHER 10MM PLATED	2
06	05.286.02	NUT M10 PLATED	2
07	05.299.36	V-BELT XPA 1060 QUAD POWER	3
08	03.795.01	PULLEY-VEE 160MM PCD X 3SPA	1
09	05.424.01	TAPER-LOCK 7/8"BORE (2517)	1
12	03.795.03	PULLEY-VEE 140MM PCD X 3SPA	1
14	05.424.17	TAPER LOCK 45MM BORE	1
15	05.960.13	KEY 14MM X 9MM X 45MM	1

*MAIN PART IN GROUP, RELATED PARTS HAVE REFERENCE NUMBER

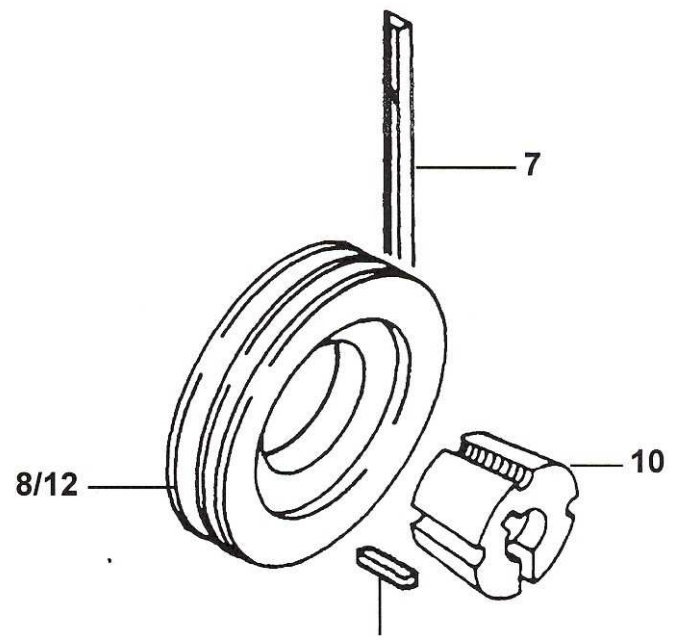
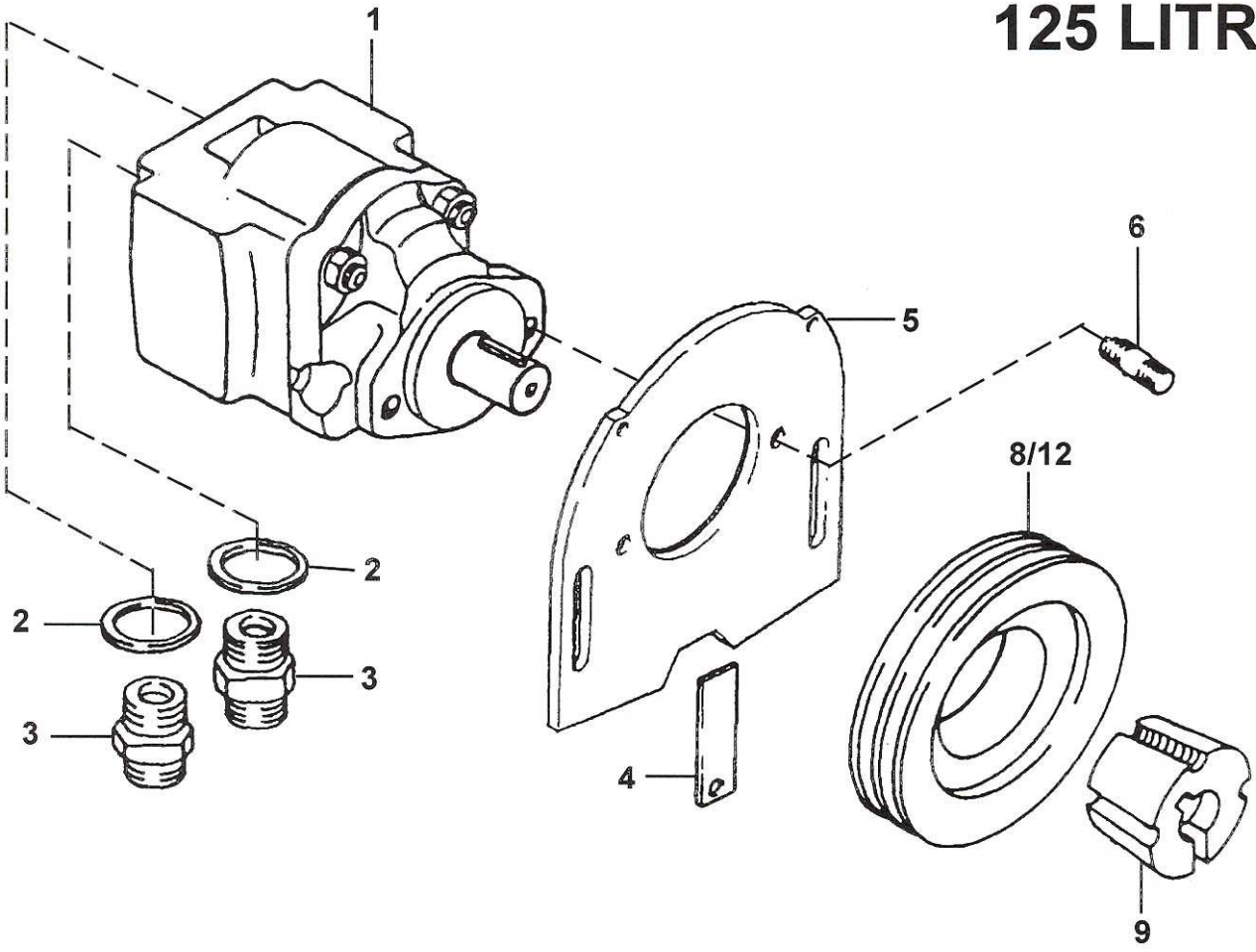
100 LITRE



REF	PART NO.	DESCRIPTION	QTY
STANDARD 1200 AND ISMP			
76.285.02 & 06 MOTOR 100L PULLEY & BELT			
01	01.071.13	KEY-SEP 1/4" X 1/4" X 1"	-
01	09.773.02	SEAL KIT FOR 09.773 MOTOR	-
*01	09.773.03	MOTOR ULTRA 2TR041	1
01	41905.01	DECAL - 100	1
02	05.290.06	BONDED SEAL 3/4"BSP	2
03	05.373.01	ADAPTOR 3/4"BSP X 1"BSP	2
04	07.833.01	PLATE - COVER	1
05	05.281.03	FLAT WASHER 12MM PLATED	2
05	05.282.03	SPRING WASHER 12MM PLATED	2
05	05.286.03	NUT M12 PLATED	2
05	05.625.12	SOCKET DOMED SCREW M12 X 35 PLT	2
*05	41893.01	PLATE - MOTOR MOUNTING GEAR	1
*06	04.282.56	STUD M10 X 37MM	2
06	05.282.02	SPRING WASHER 10MM PLATED	2
06	05.286.02	NUT M10 PLATED	2
07	05.299.36	V-BELT XPA 1060 QUAD POWER	3
08	03.795.01	PULLEY-VEE 160MM PCD X 3SPA	1
09	05.424.07	TAPER-LOCK 1"BORE (2517)	1
12	03.795.03	PULLEY-VEE 140MM PCD X 3SPA	1
13	05.424.17	TAPER LOCK 45MM BORE	1
14	05.960.13	KEY 14MM X 9MM X 45MM	1

*MAIN PART IN GROUP, RELATED PARTS HAVE REFERENCE NUMBER

125 LITRE

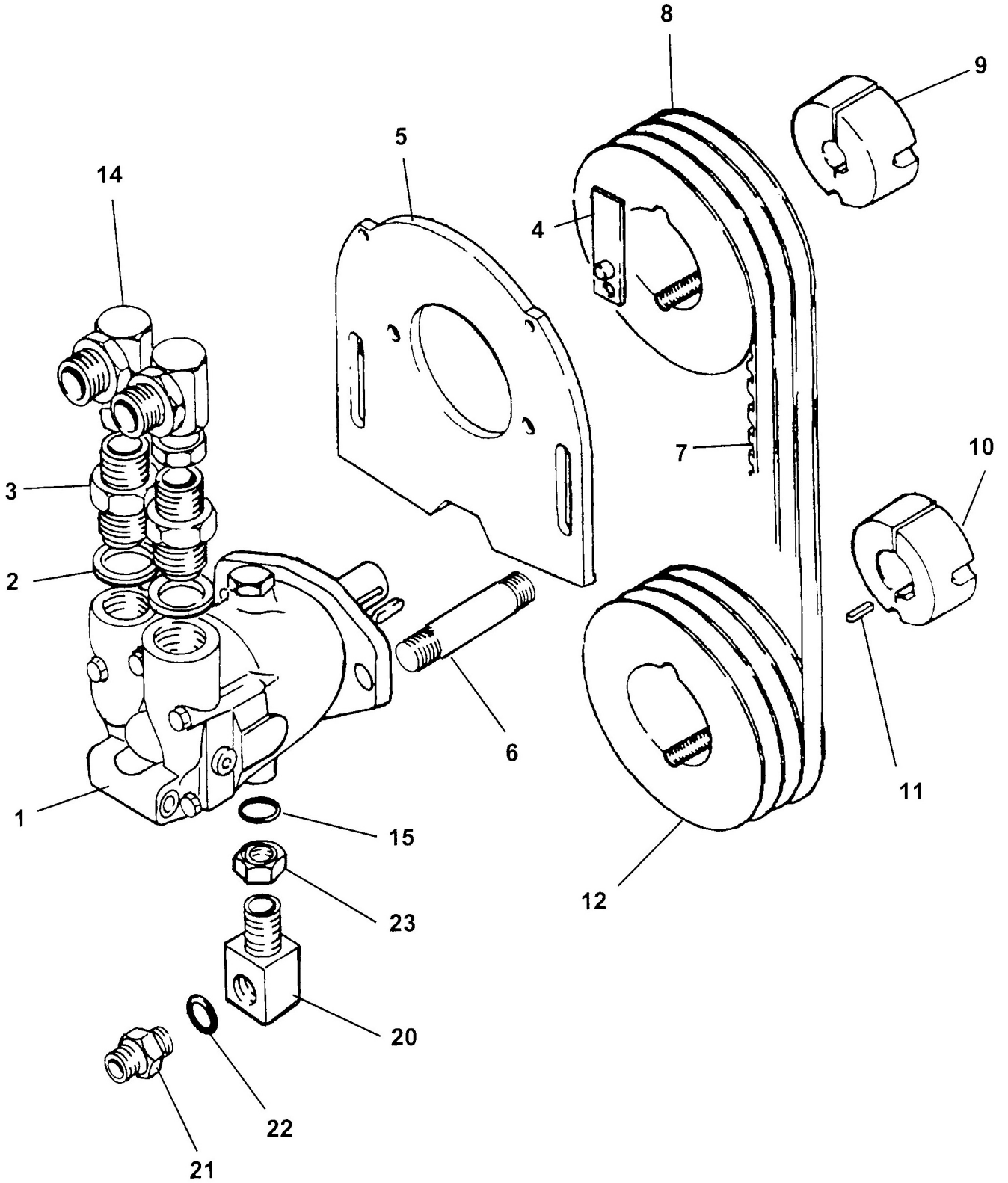


REF	PART NO.	DESCRIPTION	QTY
STANDARD 1200 AND ISMP			
76.285.05 MOTOR 125L PULLEY & BELT			
01	01.071.13	KEY-SEP 1/4" X 1/4" X 1"	-
01	09.773.02 ▲	SEAL KIT FOR 09.773 MOTOR	-
*01	09.773.04 ▲	MOTOR ULTRA 2TR044	1
01	41903.01 ■	SEAL KIT FOR 41903 MOTOR	1
01	41903.02 ■	GEAR MOTOR 125L CAST IRON	1
01	41905.02	DECAL - 125	1
02	05.290.06	BONDED SEAL 3/4"BSP	2
03	05.373.01	ADAPTOR 3/4"BSP X 1"BSP	2
04	07.833.01	PLATE - COVER	1
05	05.281.03	FLAT WASHER 12MM PLATED	2
05	05.282.03	SPRING WASHER 12MM PLATED	2
05	05.286.03	NUT M12 PLATED	2
05	05.625.12	SOCKET DOMED SCREW M12X35 PLT	2
*05	41893.01	PLATE - MOTOR MOUNTING GEAR	1
*06	04.282.56	STUD M10 X 37MM	2
06	05.282.02	SPRING WASHER 10MM PLATED	2
06	05.286.02	NUT M10 PLATED	2
07	05.299.36	V-BELT XPA 1060 QUAD POWER	3
08	03.795.01	PULLEY-VEE 160MM PCD X 3SPA	1
09	05.424.07	TAPER-LOCK 1"BORE (2517)	1
10	05.424.17	TAPER-LOCK 45MM BORE (2517)	1
11	05.960.13	KEY-S/REP 14MM X 9MM X 45MM	1
12	03.795.03	PULLEY-VEE 140MM PCD X 3SPA	1

■ For Heads prior to Serial No. 1175KA/99

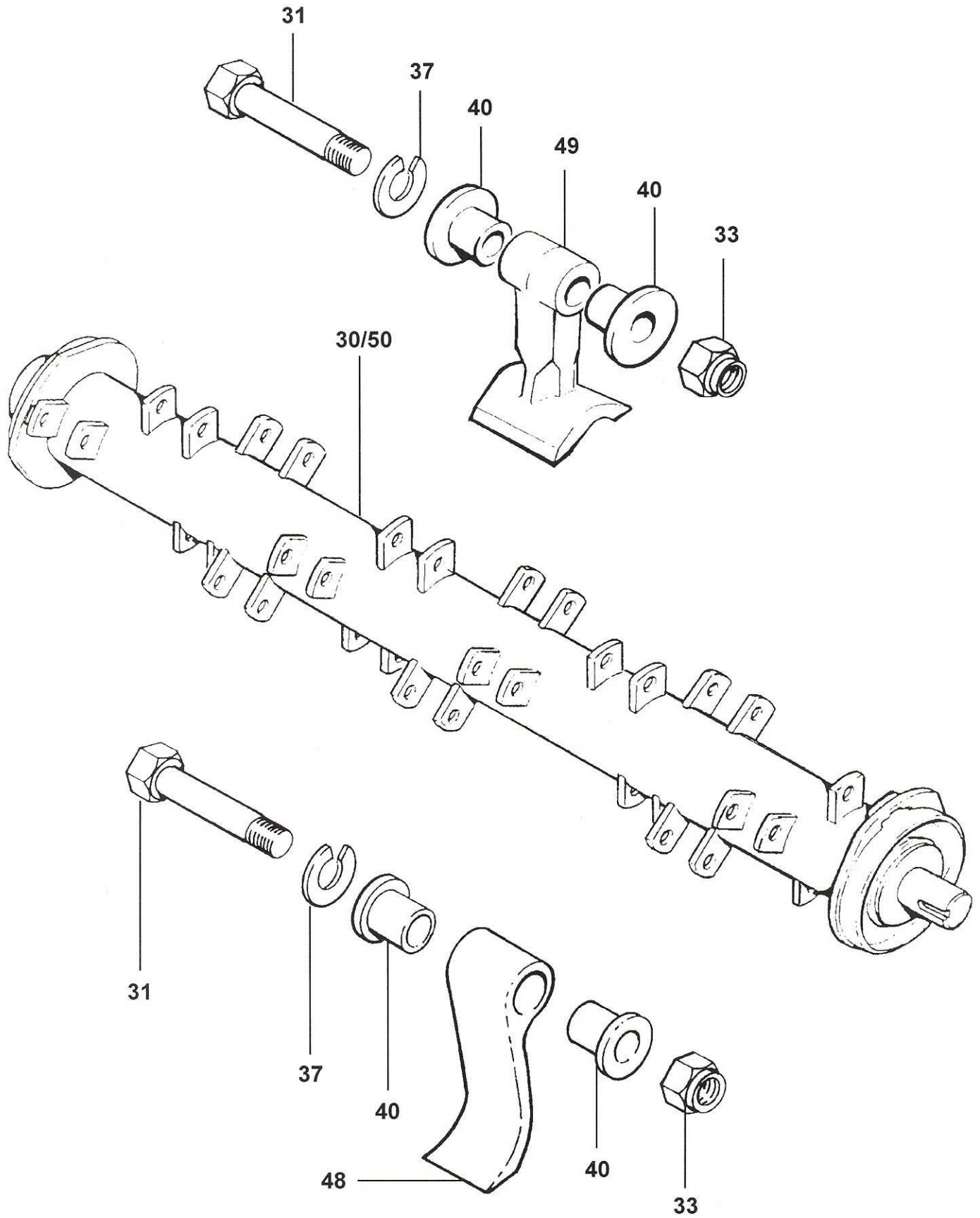
▲ For Heads from Serial No. 1176KA/99

*MAIN PART IN GROUP, RELATED PARTS HAVE SAME REFERENCE NUMBER



REF	PART NO.	DESCRIPTION	QTY
STANDARD 1200 AND ISMP			
76.285.04 & 08 MOTOR PISTON PULLEY & BELT			
01	8301295	PISTON MOTOR-SIDE PORT	1
01	8699238	SEAL KIT FOR 8301295	-
02	8600916	O RING GASKET 1.5/16"UNF	2
03	08.955.25	ADAPTOR 1"BSP X 1.5/16"-12 JIC	2
04	42186.01	PLATE - COVER	1
05	05.281.03	FLAT WASHER 12MM PLATED	2
05	05.282.03	SPRING WASHER 12MM PLATED	2
05	05.286.03	NUT M12 PLATED	2
05	05.625.12	SOCKET DOMED SCREW M12 X 35 PLT	2
05	41894.01	PLATE - MOTOR MOUNTING PISTON	1
06	04.282.17	STUD M12 X 41MM	2
06	05.282.03	SPRING WASHER 12MM PLATED	2
06	05.286.03	NUT M12 PLATED	2
07	05.299.56	BELT XPA1140 QUAD POWER GATES	3
08	03.795.01	PULLEY-VEE 160MM PCD X 3SPA	1
09	05.424.02	TAPER-LOCK 1.1/8"BORE (2517)	1
12	03.795.03	PULLEY-VEE 140MM PCD X 3SPA	1
14	05.835.02	ADAPTOR-SWIVEL 90 1"BSP M/F	2
15	8600908	O RING GASKET 3/4"UNF	1
18	05.424.17	TAPER-LOCK 45MM BORE (2517)	1
19	05.960.13	KEY-S/REP 14MM X 9MM X 45MM	1
20	42739.01	ADAPTOR	1
21	03.195.01	NUT	1
22	05.290.04	BONDED WASHER	1
23	01.510.07	NUT	1

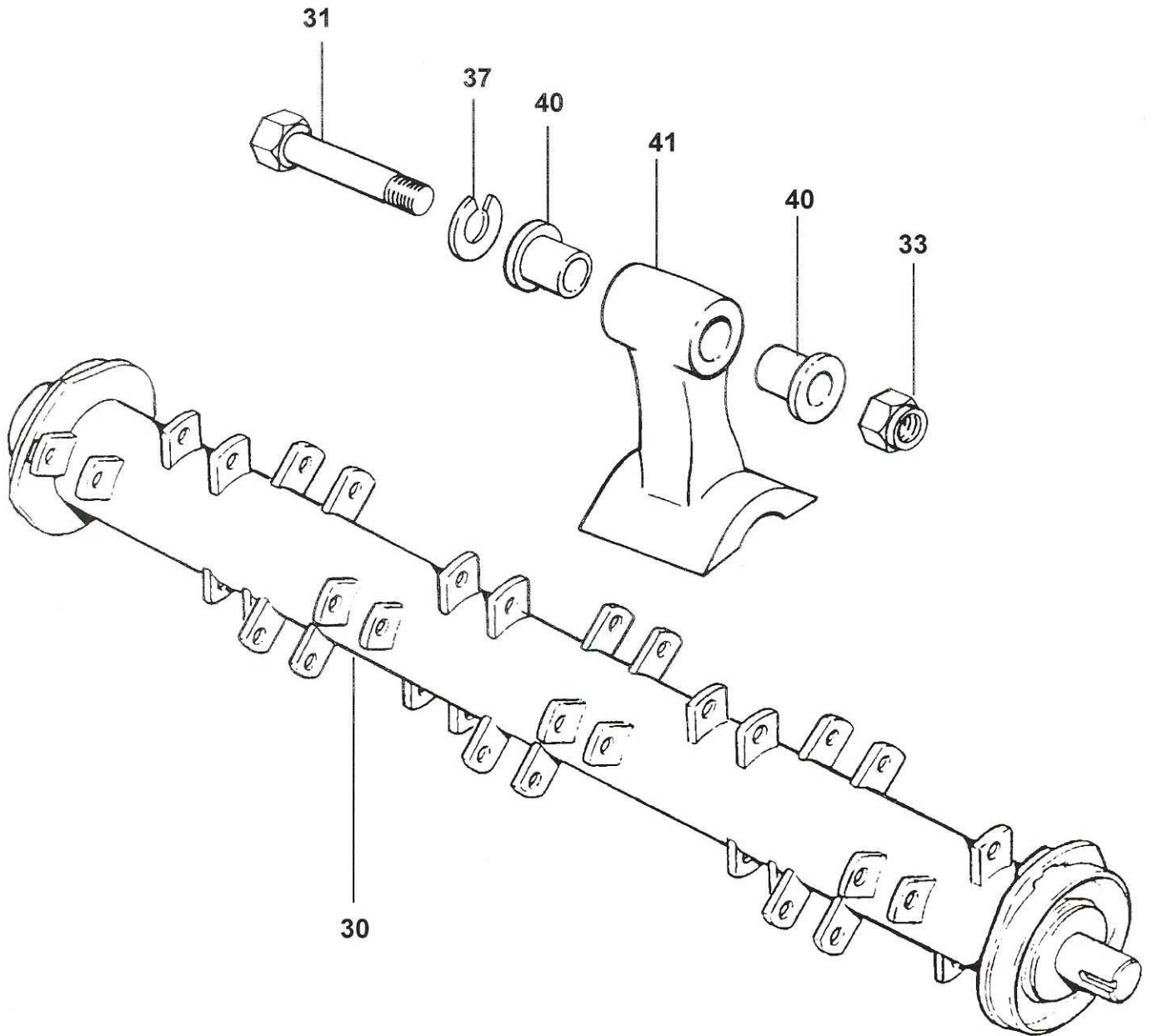
*MAIN PART IN GROUP, RELATED PARTS HAVE SAME REFERENCE NUMBER



REF	PART NO.	DESCRIPTION	QTY
76.287.45 ROTOR SHAFT 1200 PRO-FLAIL			
30	41958.08	ROTOR SHAFT ASSEMBLY	1
31	05.775.10	BOLT - SPECIAL M14 X 94MM	32
33	05.968.06	S.LOCKING NUT M14 (FINE) PLATE	32
37	05.282.04	SPRING WASHER 16MM PLATED	32
40	09.894.01	COLLAR - PIVOT	64
48	42155.01	FLAIL-SINGLE EDGE (PRO-FLAIL)	32
76.287.55 ROTOR SHAFT 1200 FORGED FLAIL			
50	41958.09	ROTOR SHAFT ASSEMBLY	1
31	05.775.10	BOLT - SPECIAL M14 X 94MM	32
33	05.968.06	S.LOCKING NUT M14 (FINE) PLATE	32
37	05.282.04	SPRING WASHER 16MM PLATED	32
40	09.894.01	COLLAR - PIVOT	64
49	42716.01	FLAIL-FORGED 44MM	32

*MAIN PART IN GROUP, RELATED PARTS HAVE SAME REFERENCE NUMBER

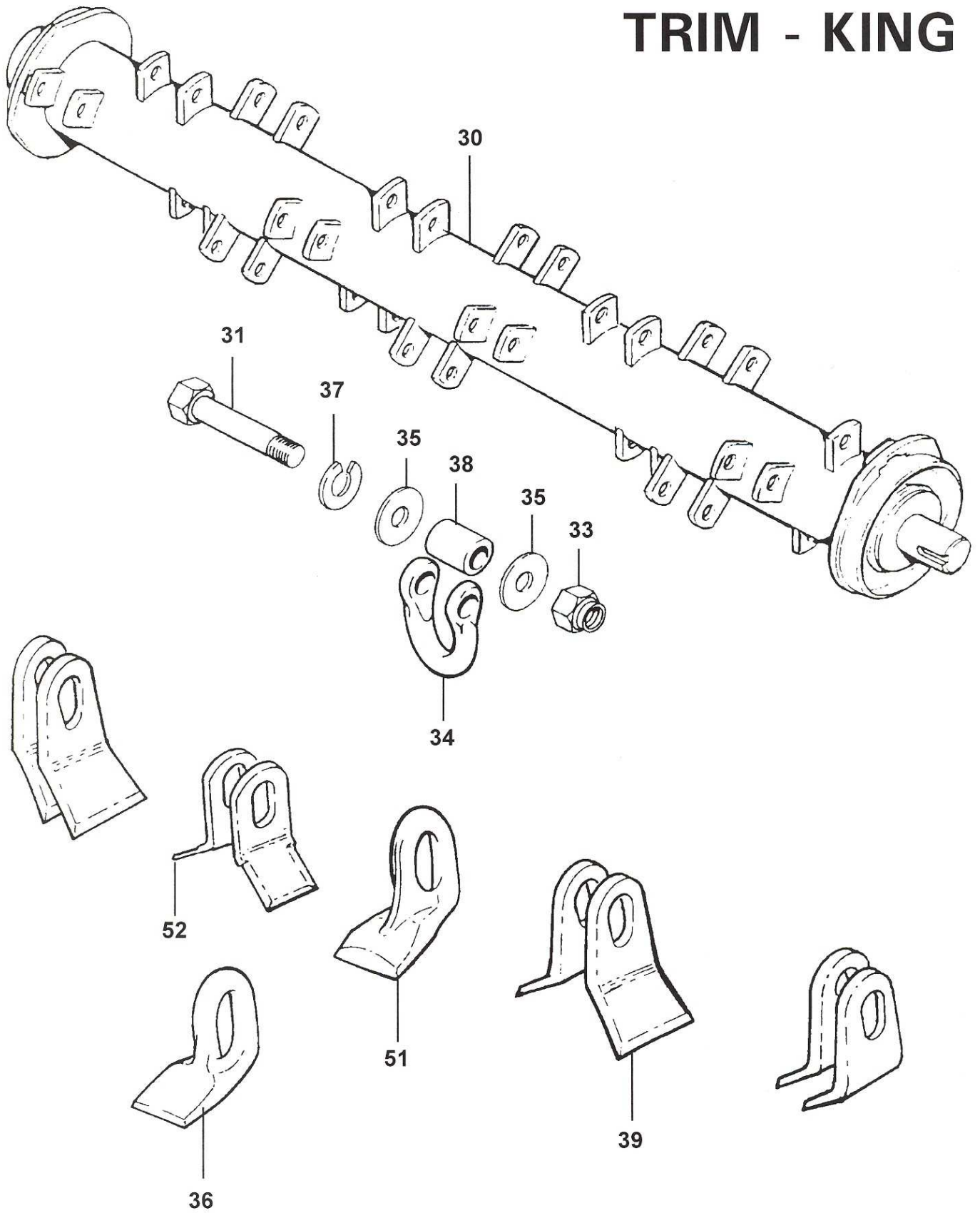
TRIM - KING



REF	PART NO.	DESCRIPTION	QTY
76.287.46 ROTOR SHAFT 1200			
30	42034.05	ROTOR SHAFT ASSEMBLY	1
31	05.775.10	BOLT - SPECIAL M14 X 94MM	24
33	05.968.06	S.LOCKING NUT M14 (FINE) PLATE	24
37	05.282.04	SPRING WASHER	24
40	09.894.01	COLLAR - PIVOT	48
41	09.905.01	FLAIL - FORGED 62MM	24

*MAIN PART IN GROUP, RELATED PARTS HAVE SAME REFERENCE NUMBER

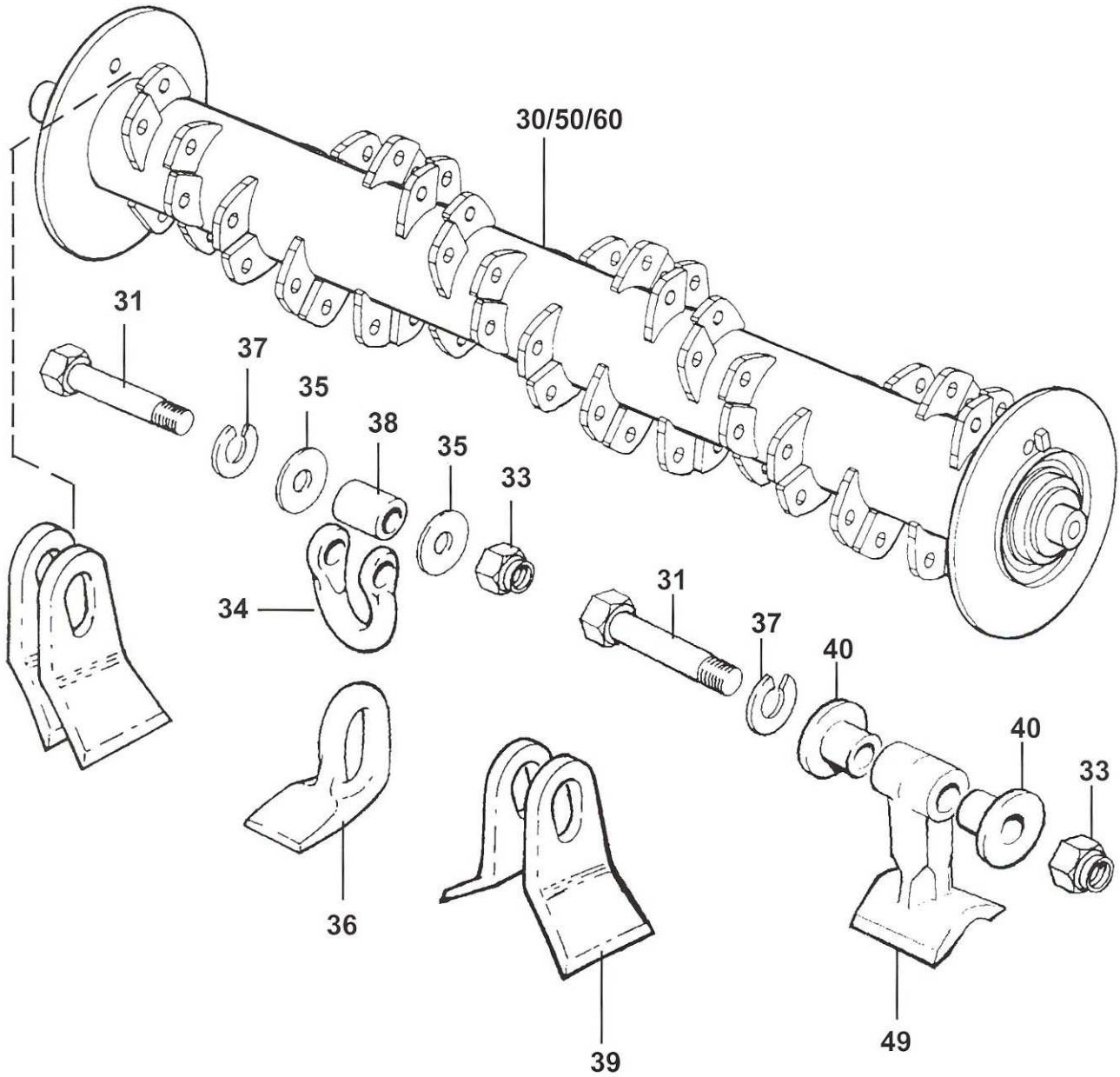
TRIM - KING



REF	PART NO.	DESCRIPTION	QTY
76.287.58 ROTOR SHAFT 1200 TRIM KING			
30	41958.10	ROTOR SHAFT ASSEMBLY	1
31	05.775.10	BOLT - SPECIAL M14 X 94MM	32
33	05.968.06	S.LOCKING NUT M14 (FINE) PLATE	32
34	05.895.01	SHACKLE-FORGED	32
35	05.281.04	FLAT WASHER 16MM PLATED	64
36	02.959.01	FLAIL - FORGED	32
37	05.282.04	SPRING WASHER 16MM PLATED	32
38	02.807.01	SPACER 1" O/D X 16MM I/D X 27MM	32
ALTERNATIVE PARTS			
39	41654.01	FLAIL FLARED	32
51	42750.01	FLAIL-FORGED MP44	32
52	7190166	FLAIL-FORMED	32

*MAIN PART IN GROUP, RELATED PARTS HAVE SAME REFERENCE NUMBER

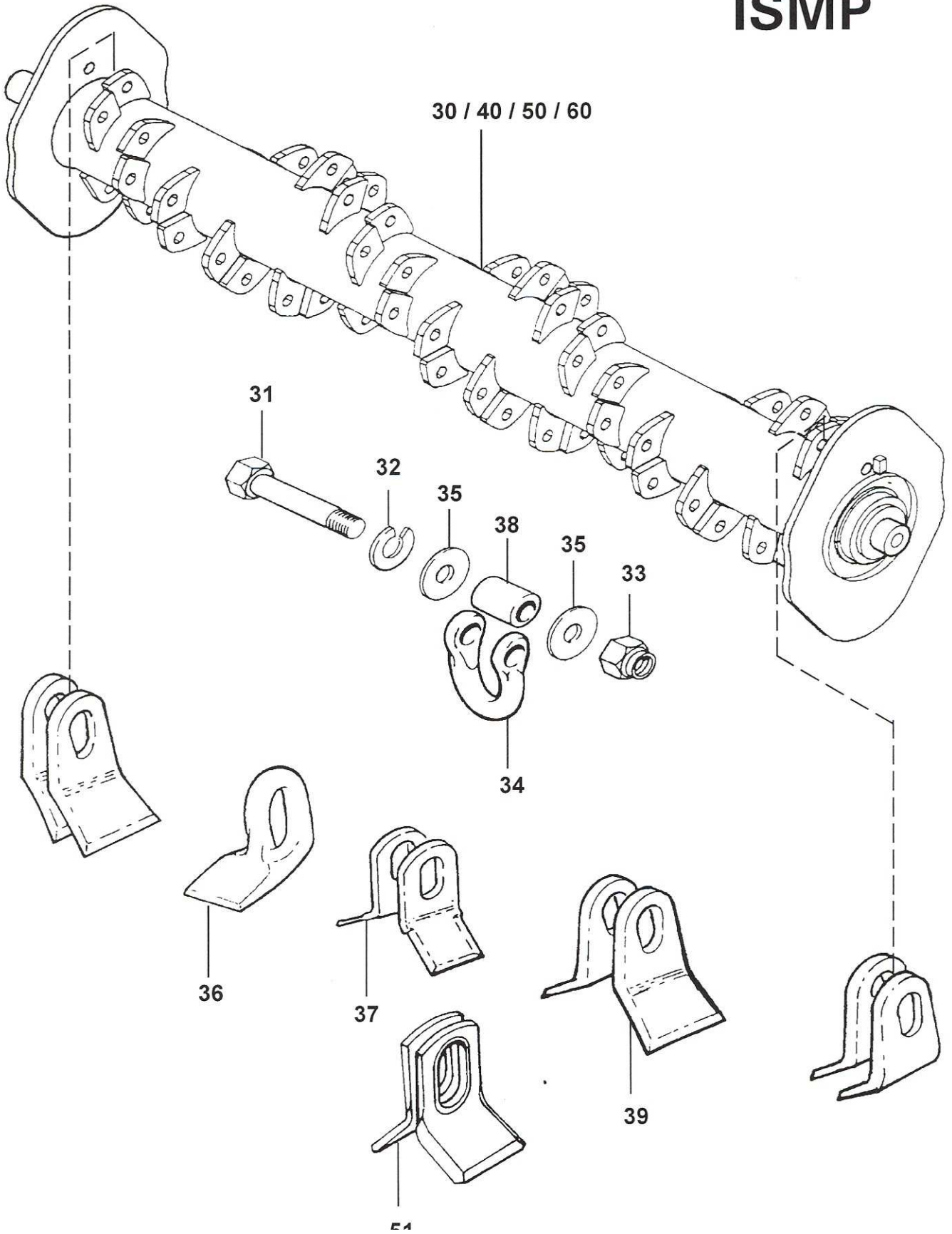
TRIM - KING



REF	PART NO.	DESCRIPTION	QTY
76.287.68 ROTOR SHAFT 1200			
30	41958.12	ROTOR SHAFT ASSY	1
31	05.775.10	BOLT - SPECIAL M14 X 94MM	32
33	05.968.06	S.LOCKING NUT M14 (FINE) PLATED	32
34	05.895.01	SHACKLE-FORGED	32
35	05.281.04	FLAT WASHER 16MM PLATED	64
36	02.959.01	FLAIL - FORGED	32
37	05.282.04	SPRING WASHER 16MM PLATED	32
38	02.807.01	SPACER 1" O/D X 16MM I/D X 27MM	32
76.287.77 ROTOR SHAFT			
31	05.775.10	BOLT - SPECIAL M14 X 96MM	32
33	05.968.06	S.LOCKING NUT M14 (FINE) PLATE	32
37	05.282.04	SPRING WASHER 16MM PLATED	32
40	09,894.01	COLLAR - PIVOT	64
49	42716.01	FLAIL - FORGED 44MM	32
50	41958.15	ROTOR SHAFT ASSY	1
76.287.79 ROTOR SHAFT			
31	05.775.10	BOLT - SPECIAL M14 X 94MM	32
33	05.968.06	S.LOCKING NUT M14 (FINE) PLATED	32
34	05.895.01	SHACKLE-FORGED	32
35	05.281.04	FLAT WASHER 16MM PLATED	64
37	05.282.04	SPRING WASHER 16MM PLATED	32
38	02.807.01	SPACER 1" O/D X 16MM I/D X 27MM	32
39	41654.01	FLAIL - FLAIRED	64
60	41958.16	ROTOR SHAFT ASSY	1

*MAIN PART IN GROUP, RELATED PARTS HAVE SAME REFERENCE NUMBER

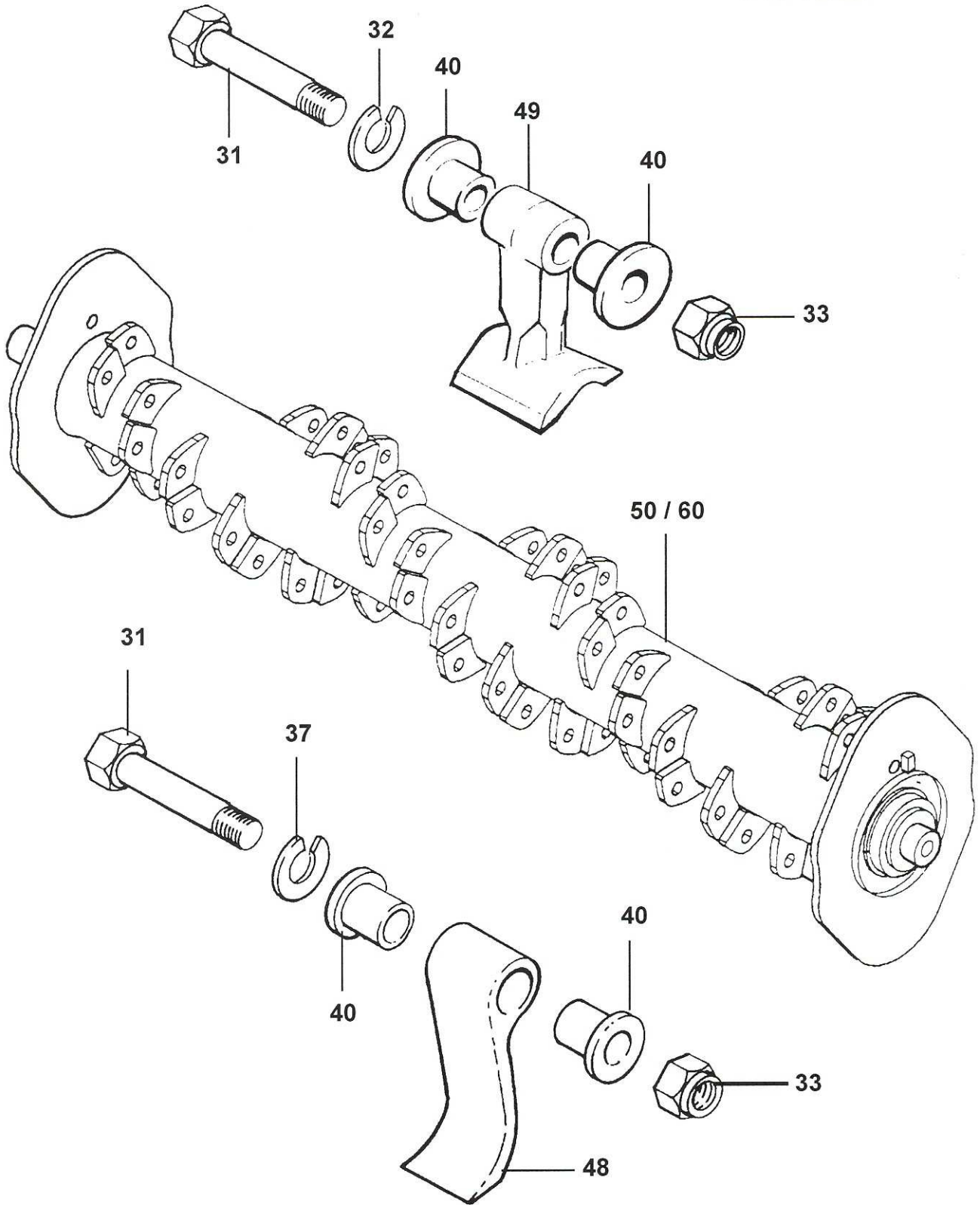
ISMP



REF	PART NO.	DESCRIPTION	QTY
76.287.15 ROTOR SHAFT 1200 ISMP			
30	41958.03	ROTOR SHAFT ASSEMBLY	1
31	05.775.10	BOLT - SPECIAL M14 X 94MM	32
32	05.282.04	SPRING WASHER 16MM PLATED	32
33	05.968.06	S.LOCKING NUT M14 (FINE) PLATE	32
34	05.895.01	SHACKLE-FORGED	32
35	05.281.04	FLAT WASHER 16MM PLATED	64
38	02.807.01	SPACER 1"O/D X 16MM I/D X 27MM	32
39	41654.01	FLAIL - FLARED 51 X 8	64
76.287.16 ROTOR SHAFT 1200 ISMP			
40	41958.04	ROTOR SHAFT ASSEMBLY	1
31	05.775.10	BOLT - SPECIAL M14 X 94MM	32
32	05.282.04	SPRING WASHER 16MM PLATED	32
33	05.968.06	S.LOCKING NUT M14 (FINE) PLATE	32
34	05.895.01	SHACKLE-FORGED	32
35	05.281.04	FLAT WASHER 16MM PLATED	32
37	7190166	FLAIL 40 X 6	64
38	02.807.01	SPACER 1"O/D X 16MM I/D X 27MM	32
76.287.13 & 14 ROTOR SHAFT 1200 ISMP			
50	41958.01	ROTOR SHAFT ASSEMBLY CLOCKWISE	1
50	41958.02	ROTOR SHAFT ASSEMBLY ANTICLOCKWISE	1
31	05.775.10	BOLT - SPECIAL M14 X 94MM	32
32	05.282.04	SPRING WASHER 16MM PLATED	32
33	05.968.06	S.LOCKING NUT M14 (FINE) PLATE	32
34	05.895.01	SHACKLE-FORGED	32
35	05.281.04	FLAT WASHER 16MM PLATED	64
36	02.959.01	FLAIL - FORGED	32
38	02.807.01	SPACER 1"O/D X 16MM I/D X 27MM	32
76.287.60 ROTOR SHAFT ASSY			
60	41958.11	ROTOR SHAFT ASSEMBLY	1
31	05.775.10	BOLT - SPECIAL M14 X 9MM	32
32	05.282.04	SPRING WASHER 16MM PLATED*	32
33	05.968.06	S.LOCKING NUT M14 (FINE) PLATE	32
34	05.895.01	SHACKLE-FORGED	32
35	05.281.04	FLAT WASHER 16MM PLATED*	64
38	02.807.01	SPACER 1" O/D X 16MM I/D X 27MM	32
51	43092.01	FLAIL 36 X 8	64

*MAIN PART IN GROUP, RELATED PARTS HAVE SAME REFERENCE NUMBER

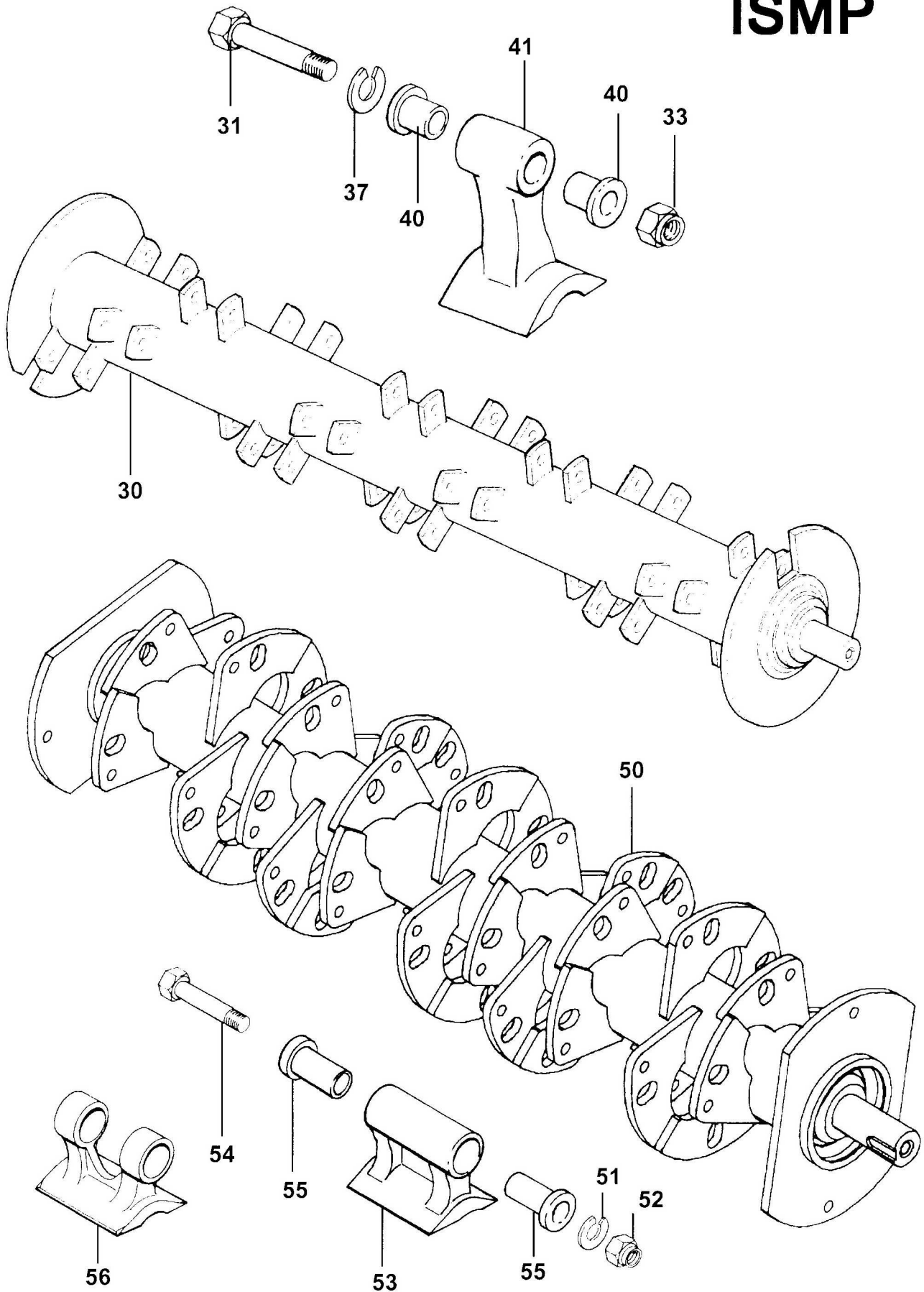
ISMP



REF	PART NO	DESCRIPTION	QTY
76.287.30 & 31 ROTOR SHAFT 1200 ISMP			
31	05.775.10	BOLT - SPECIAL M14 X 94MM	32
32	05.282.08	SPRING WASHER 14MM PLATED	32
37	05.968.04	S.LOCKING NUT M16 (FINE) PLATED	32
40	09.894.01	COLLAR - PIVOT	64
48	42155.01	FLAIL-SINGE EDGE (PRO-FLAIL)	32
50	41958.05	ROTOR SHAFT ASSEMBLY CLOCKWISE	1
50	41958.06	ROTOR SHAFT ASSEMBLY ANTICLOCKWISE	1
76.287.38 ROTOR SHAFT ISMP			
60	41958.07	ROTOR SH.ASSY 4195601/4271601	1
31	05.775.10	BOLT-SPECIAL M14 X 94MM	32
32	05.282.08	SPRING WASHER 14MM PLATED	32
33	05.968.06	S.LOCKING NUT M14 (FINE) PLATE	32
40	09.894.01	COLLAR - PIVOT	64
49	42716.01	FLAIL - FORGED 44MM	32

***MAIN PART IN GROUP, RELATED PARTS HAVE SAME REFERENCE NUMBER**

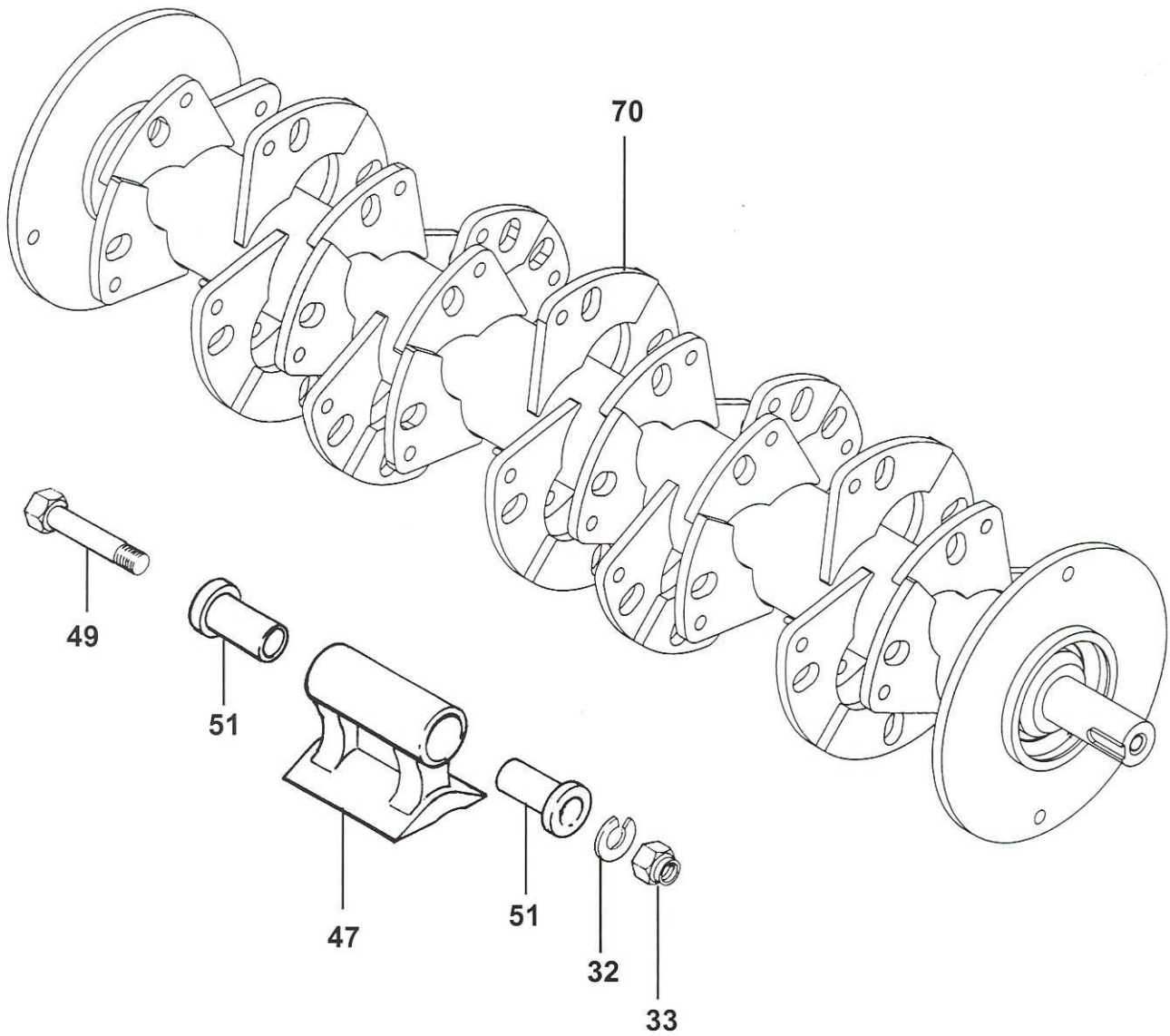
ISMP



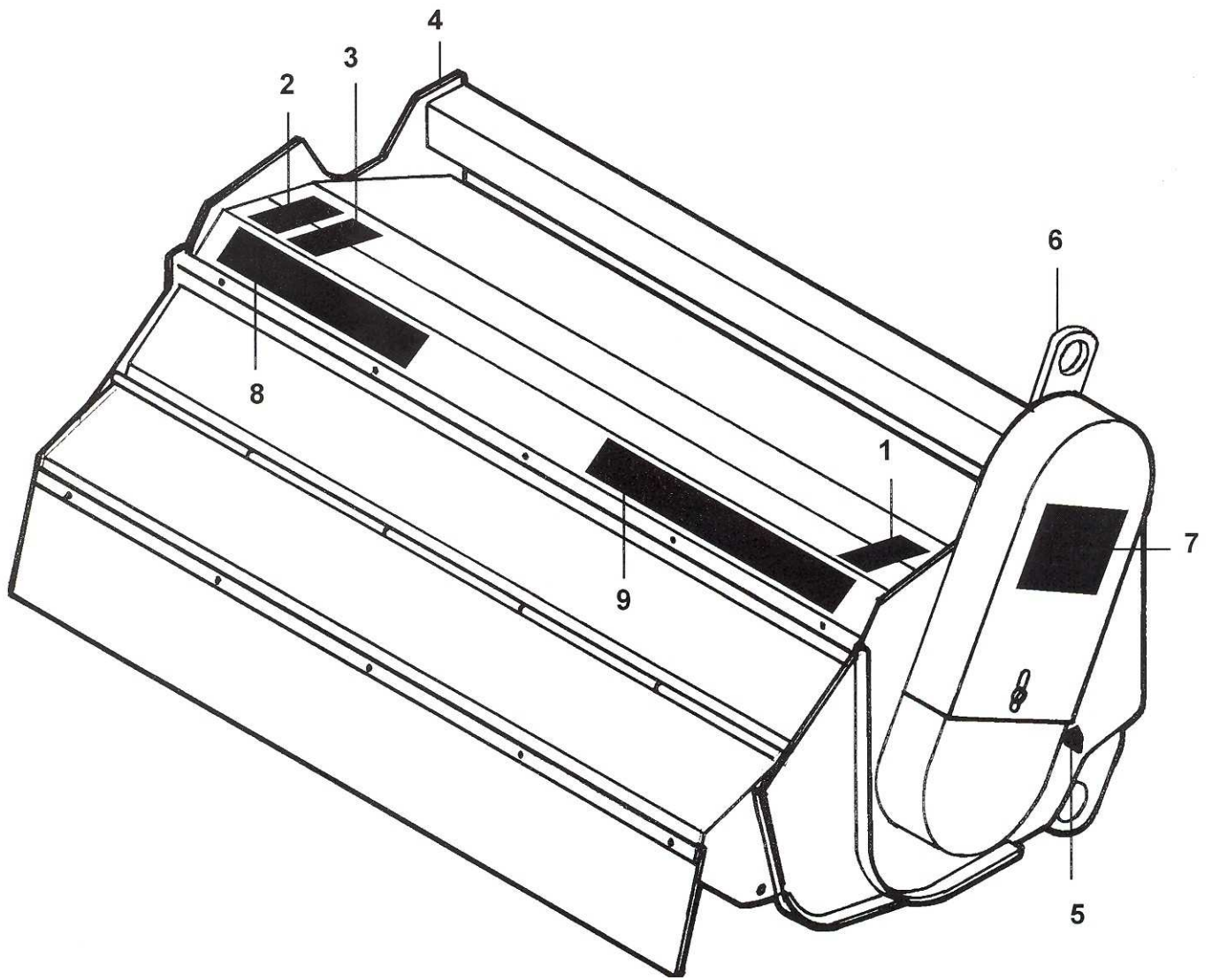
REF	PART NO.	DESCRIPTION	QTY
76.287.18 ROTOR SHAFT 1200 ISMP ASSY			
30	42034.04	ROTOR SHAFT ASSEMBLY	1
31	05.775.10	BOLT - SPECIAL M14 X 94MM	24
37	05.282.04	SPRING WASHER 16MM PLATED	24
33	05.968.06	S.LOCKING NUT M14 (FINE) PLATE	24
40	09.894.01	COLLAR - PIVOT	48
41	09.905.01	FLAIL - FORGED 62MM	24
76.287.34 ROTOR SHAFT 1200 ISMP BUSHMASTER			
50	42530.02	ROTOR SHAFT ASSEMBLY	1
51	05.282.08	SPRING WASHER 14MM PLATED	24
52	05.968.06	S.LOCKING NUT M14 (FINE) PLATED	24
53	42594.01	FLAIL - FORGED	24
54	05.775.13	BOLT - SPECIAL M14 X 140MM	24
55	42598.01	COLLAR - PIVOT	48
ALTERNATIVE PARTS			
56	42594.03	FLAIL - FORGED	24

*MAIN PART IN GROUP, RELATED PARTS HAVE SAME REFERENCE NUMBER

ISMP



REF	PART NO.	DESCRIPTION	QTY
76.287.80 ROTOR SHAFT - BUSHMASTER			
32	05.282.04	SPRING WASHER 16MM PLATED	24
33	05.968.07	S.LOCKING NUT M16 (FINE) PLATE	24
47	42594.01	FLAIL - FORGED	24
49	05.775.14	BOLT - SPECIAL M16 X 142MM	24
51	42958.03	COLLAR - PIVOT	48
70	43599.01	ROTOR SHAFT ASSEMBLY	1



REF	PART NO.	DESCRIPTION	QTY
72.855.03 DECALS - HEAD			
01	09.821.04	DECAL - DANGER THROWN DEBRIS	1
02	09.821.05	DECAL - CUTTING HEAD DANGER	1
03	09.821.08	DECAL - SAFEWORKING ON HEAD	1
04	09.821.10	DECAL - KEEP NUTS TIGHT	1
05	09.810.02	DECAL - GREASE (40 HOURS)	4
06	09.843.02	DECAL - LIFT POINT 350 KG	2
07	41.054.01	DECAL - HEAD GUARDING	1
08	09.837.01	DECAL - BOMFORD	1
09	41582.03	DECAL - TRIM-KING	1