

PM1894R

TRIM-KING

CUTTING HEAD

ISSUE 1

ВНИМАНИЕ

ВПИШИТЕ СЮДА СЕРИЙНЫЙ НОМЕР ВАШЕЙ МАШИНЫ И ВСЕГДА УКАЗЫВАЙТЕ ЕГО ПРИ ВСЕХ КОНТАКТАХ С НАМИ ИЛИ С НАШИМИ ДИЛЕРАМИ. ЭТО ОСОБЕННО ВАЖНО ПРИ ЗАКАЗЕ ЗАПАСНЫХ ЧАСТЕЙ. НЕ ЗАБУДЬТЕ УКАЗАТЬ ВСЕ ЦИФРЫ И БУКВЫ.

серийный номер _____

Информация, представленная в настоящей инструкции, соответствует положению на день публикации. Тем не менее, вследствие постоянного совершенствования техники Bomford Turner, Ваша машина может иметь отличительные особенности, при обнаружении которых просим связаться с отделом сервиса Bomford Turner, где Вы всегда сможете получить свежую информацию.

Инструкция по эксплуатации может содержать описание как стандартных, так и дополнительных узлов и не может использоваться в качестве спецификации машины.

Машина проверена и признана безопасной при соблюдении правил эксплуатации. Убедитесь, что оператор достаточно подготовлен для её монтажа и использования.

TRIM KING ISMP 1200

PAGE AND ILLUSTRATION NUMBERS SHOWN ARE USED ONLY FOR REFERENCE PURPOSES AND SHOULD NOT BE USED FOR ORDERING SPARE PARTS.

PLEASE ENSURE THE CORRECT PART NUMBER AND DESCRIPTION IS GIVEN WHEN ORDERING SPARE PARTS.

For Trim King ISMP 1200 Head with serial number 2181PA/03

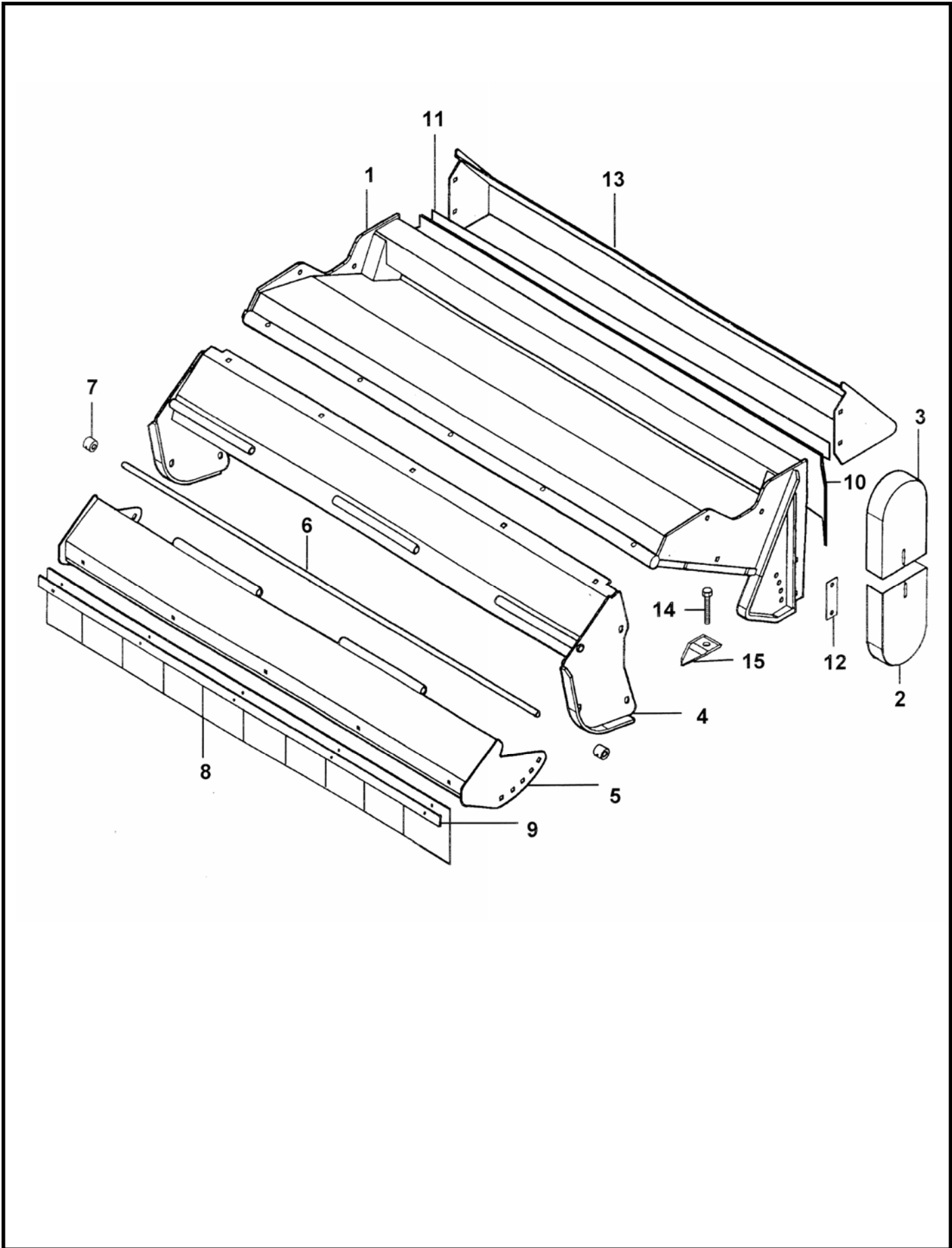
Page No.	Section
2 - 1 TO 2 - 2	COWL ASSEMBLY ISMP
3 - 1 TO 3 - 2	BEARING ASSEMBLY ISMP
4 - 1 TO 4 - 2	ROLLER ASSEMBLY
5 - 1 TO 5 - 2	MOTOR ASSEMBLY 125 LITRE
6 - 1 TO 6 - 2	ROTOR SHAFTS 1200 ISMP
7 - 1 TO 7 - 2	DECALS

IMPORTANT

THIS MACHINE IS DESIGNED FOR VEGETATION CONTROL
AND MUST NOT BE USED FOR ANY OTHER PURPOSE

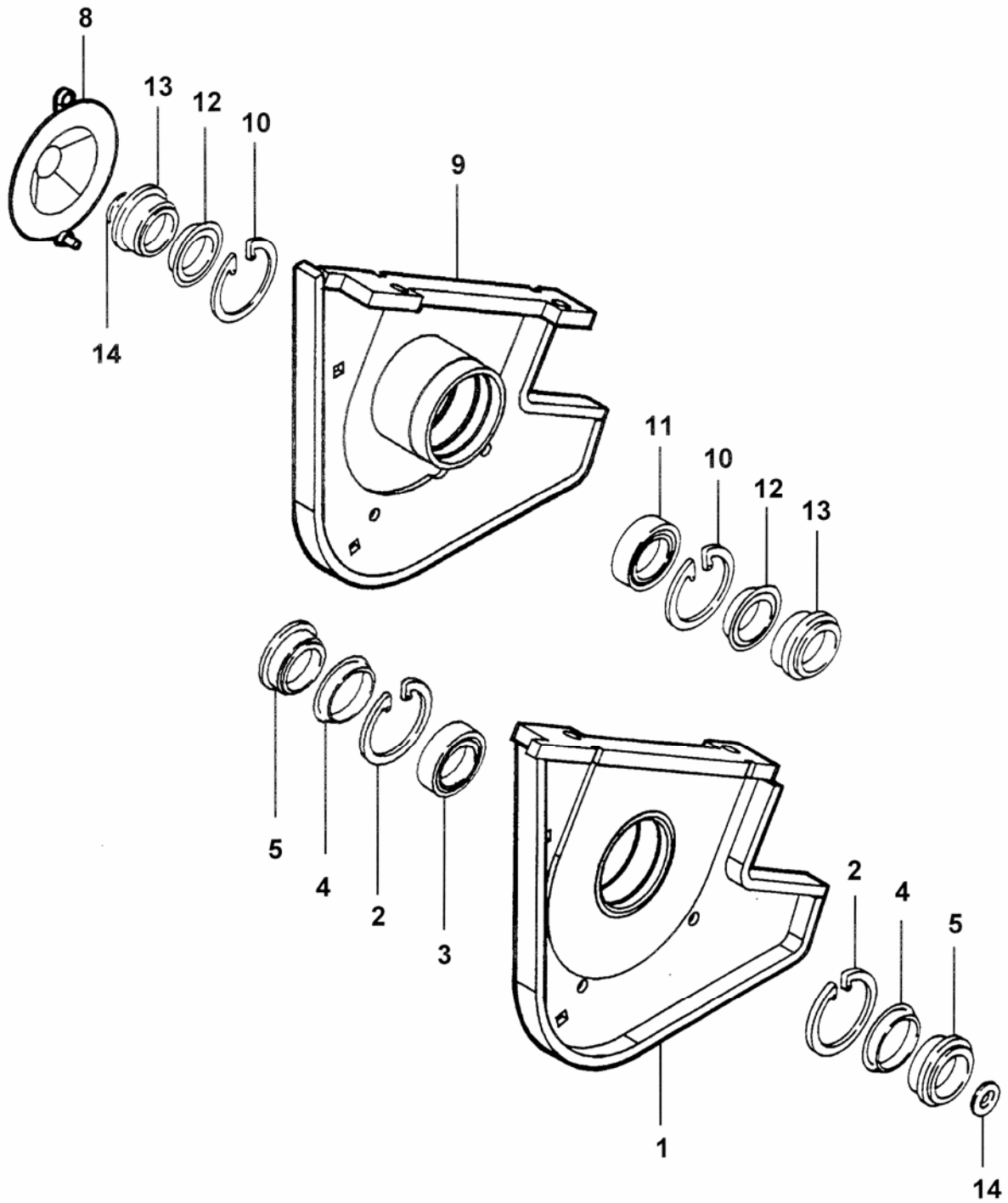
IT IS POTENTIALLY HAZARDOUS TO FIT OR USE
ANY PARTS OTHER THAN GENUINE BOMFORD TURNER PARTS

THE COMPANY DISCLAIMS ALL LIABILITY FOR THE
CONSEQUENCES OF SUCH USE WHICH, IN ADDITION,
VOIDS THE MACHINE WARRANTY



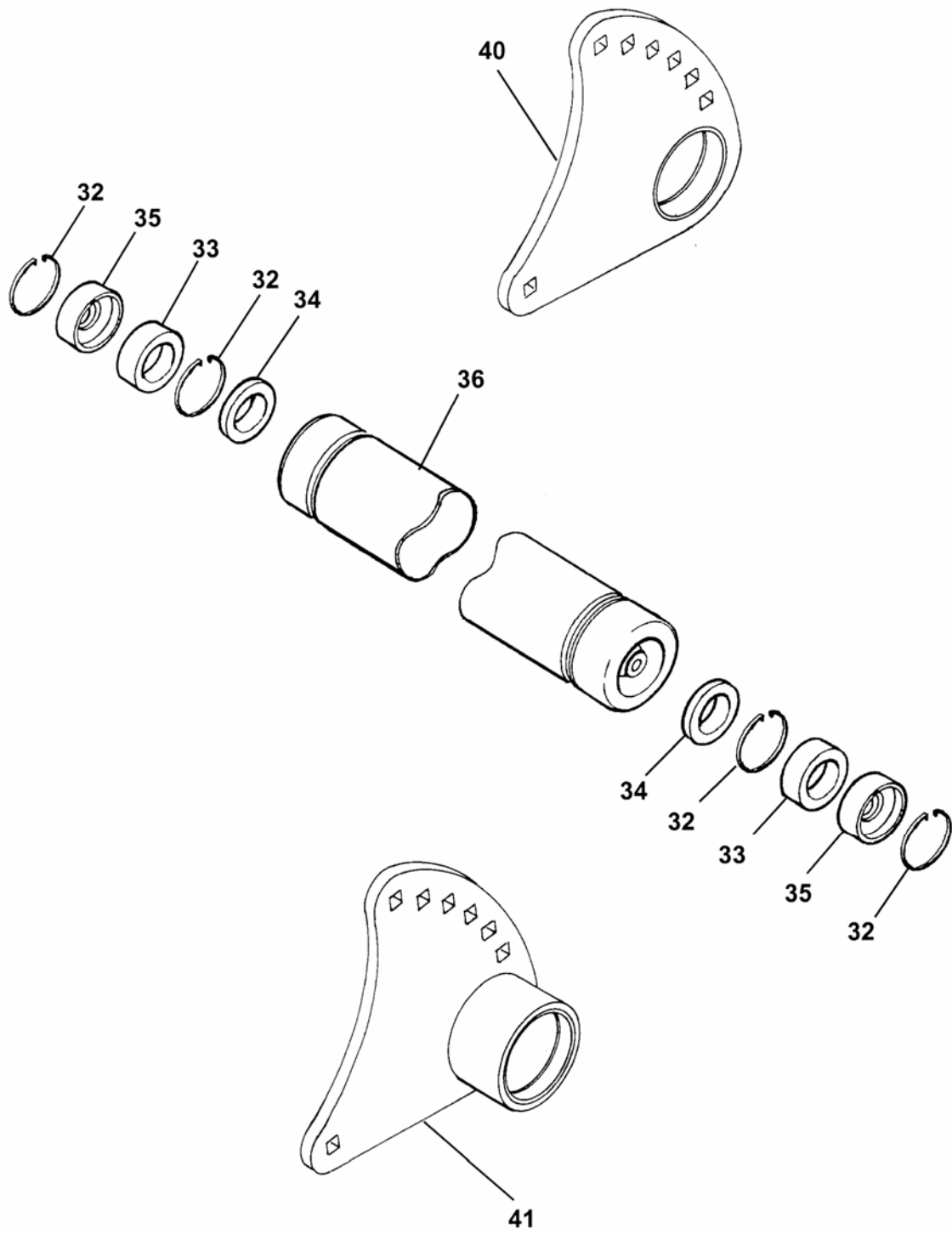
REF	PART NO.	DESCRIPTION	QTY
76.286.09 COWL ISMP ASSY			
01	05.227.01	HAMMER DRIVE SCREW NO.6 X 3/8"	2
01	05.282.03	SPRING WASHER 12MM PLATED	6
01	05.286.03	NUT M12 PLATED	6
01	05.774.06	SERIAL NO.PLATE BOMFORD TURNER	1
01	05.839.26	BOLT CUP SQ M12 X 30 (PLATED)	6
*01	41945.01	COWL - ISMP 1200	1
02	05.264.21	SETSCREW M12 X 20MM PLATED	1
02	05.281.03	FLAT WASHER 12MM PLATED	1
02	05.282.03	SPRING WASHER 12MM PLATED	2
02	05.286.03	NUT M12 PLATED	1
*02	06.205.01	GUARD-BOTTOM DRIVE	1
03	05.264.21	SETSCREW M12 X 20MM PLATED	2
03	05.282.03	SPRING WASHER 12MM PLATED	2
*03	06.222.01	GUARD-TOP DRIVE	1
04	05.281.03	FLAT WASHER 12MM PLATED	4
04	05.282.03	SPRING WASHER 12MM PLATED	6
04	05.286.03	NUT M12 PLATED	6
04	05.287.02	SELF-LOCKING NUT M10 PLATED	5
04	05.839.24	BOLT CUP SQ M10 X 50 (PLATED)	5
04	05.839.26	BOLT CUP SQ M12 X 30 (PLATED)	6
*04	42299.02	GUARD - FRONT FIXED 1200	1
05	42301.02	GUARD - FRONT ADJUSTMENT 1200	1
06	05.201.17	TENSION PIN 3MM X 25MM PLATED	2
*06	41435.01	PIN PIVOT FRT GUARD	1
07	41436.01	SPACER-PIVOT FRONT GUARD	2
08	42297.01	GUARD - FLEXIBLE FRONT 1200	1
09	05.287.01	NUT M8 (PLATED)	9
*09	09.594.03	BACKING STRIP 1200	1
09	9293054	BOLT CUP SQUARE M8 X 25 (PLATED)	9
10	41884.01	GUARD - FLEXIBLE REAR 1200	1
11	05.287.01	NUT M8 PLATED	9
*11	09.594.03	BACKING STRIP 1200	1
11	9293054	BOLT CUP SQUARE M8 X 25 (PLATED)	5
12	05.282.03	SPRING WASHER 12MM PLATED	4
12	05.286.03	NUT M12 PLATED	4
12	05.839.34	BOLT CUP SQ M12 X 35 (PLATED)	4
*12	41883.01	CLAMP - GUARD	2
13	05.281.01	FLAT WASHER 8MM PLATED	9
13	05.282.03	SPRING WASHER 12MM PLATED	4
13	05.287.01	SELF-LOCKING NUT M8 PLATED	9
13	05.286.03	NUT M12 PLATED	4
13	05.839.34	BOLT CUP SQ M12 X 35 (PLATED)	4
*13	41906.03	GUARD - REAR 1200	1
13	9293054	BOLT CUP SQUARE M8 X 25 (PLATE)	9
14	05.286.03	NUT M12 PLATED	2
*14	06.220.01	SETSCREW M12 X 100 PLATED	1
15	05.282.03	SPRING WASHER 12MM PLATED	1
15	05.286.03	NUT M12 PLATED	1
15	05.839.26	BOLT CUP SQ M12 X 30 (PLATED)	1
*15	41.946.01	BRACKET BOLT ADJUSTMENT	1

*MAIN PART IN GROUP, RELATED PARTS HAVE SAME REFERENCE NUMBER



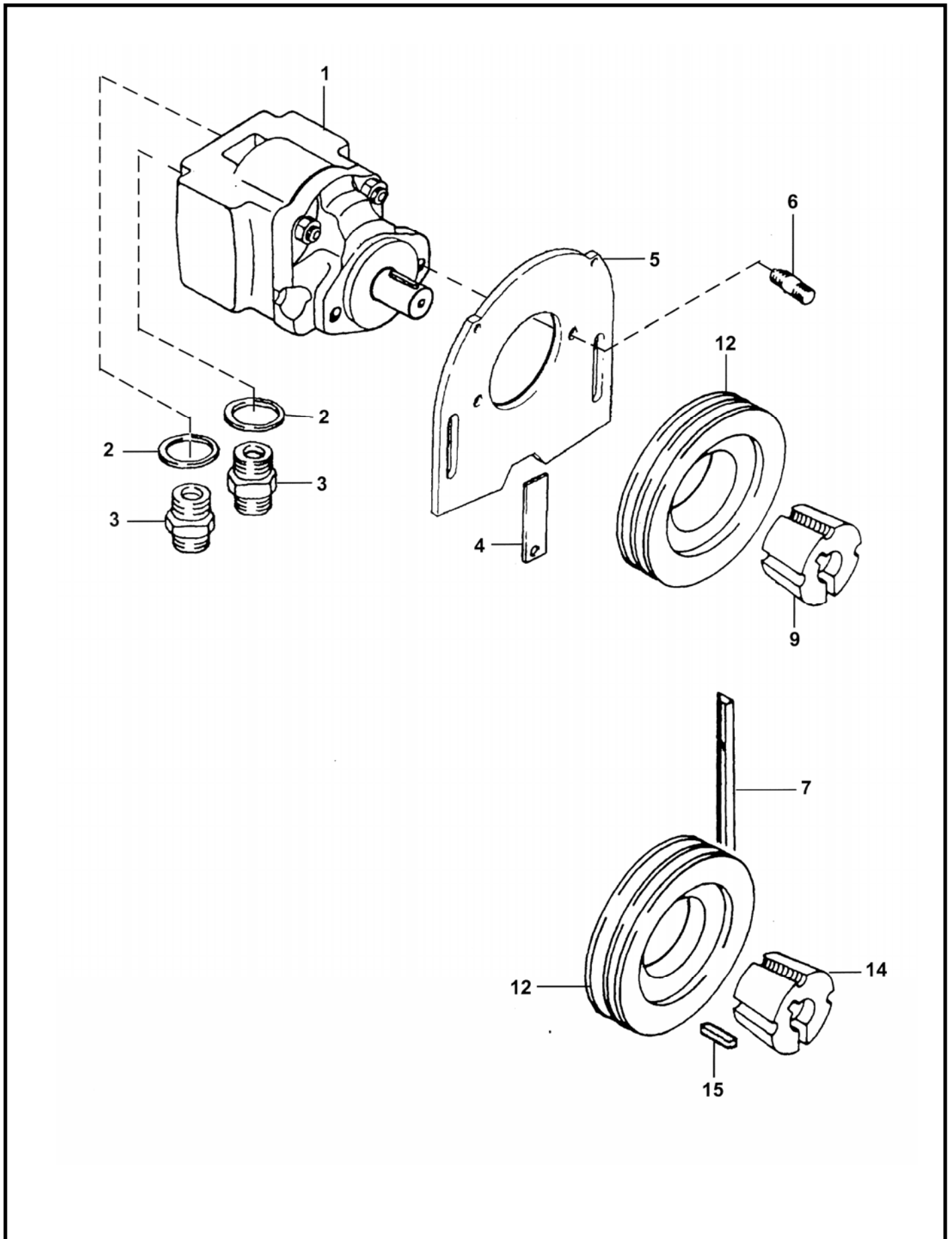
REF	PART NO.	DESCRIPTION	QTY
76.118.02 BEARING ASSEMBLY			
01	05.775.01	BOLT M16 X 50MM (10.9) PLATED	2
01	05.953.03	GREASE NIPPLE M10	1
01	05.968.04	S.LOCKING NUT M16 (FINE) PLATE	2
*01	41947.01	BEARING HOUSING LH	1
02	05.959.07	CIRCLIP - INT 85MM DIA	2
03	04.163.04	BEARING-SPH.ROLLER 45MM BORE	1
04	06.909.01	SPACER-SEAL	2
05	06.910.01	COLLAR-SEAL	2
08	05.282.03	SPRING WASHER 12MM PLATED	2
08	05.286.03	NUT M12 PLATED	2
08	05.839.27	BOLT CUP SQ M12 X 30 (PLATED)	1
*08	41961.01	GUARD - NON DRIVE ISMP	1
09	05.775.01	BOLT M16 X 50MM (10.9) PLATED	2
09	05.953.03	GREASE NIPPLE M10	1
09	05.968.04	S.LOCKING NUT M16 (FINE) PLATE	2
09	41947.02	BEARING HOUSING RH	1
10	05.959.07	CIRCLIP - INT 85MM DIA	2
11	04.163.04	BEARING-SPH.ROLLER 45MM BORE	1
12	06.909.01	SPACER-SEAL	2
13	06.910.01	COLLAR-SEAL	2
14	04.252.01	WASHER 65 O/DX17 I/DX8MM	2
*14	05.264.35	SETSCREW M16 X 40MM PLATED	2
14	05.283.04	SHAKEPROOF WASHER 16MM PLATED	2

*MAIN PART IN GROUP, RELATED PARTS HAVE SAME REFERENCE NUMBER



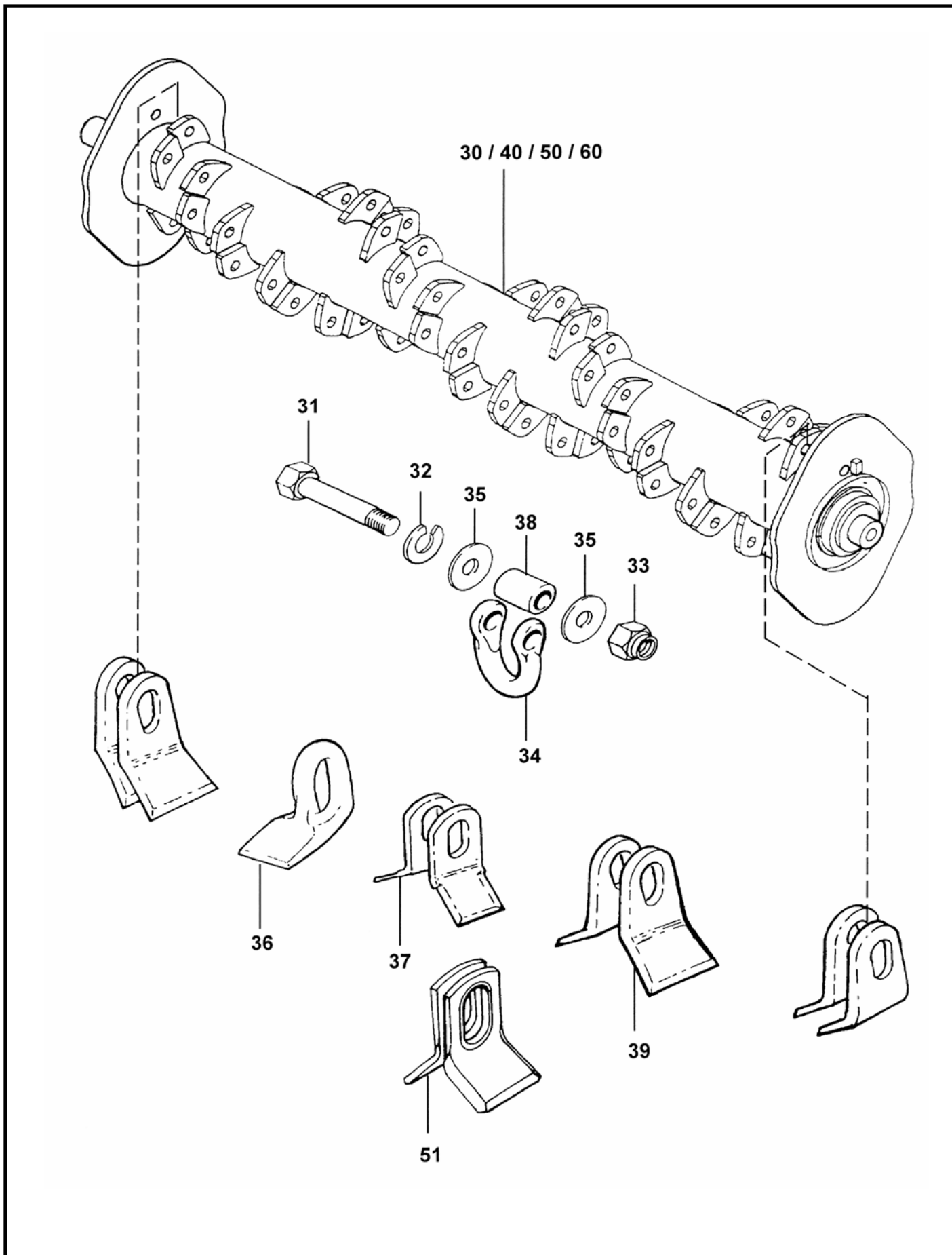
REF	PART NO.	DESCRIPTION	QTY
76.284.01 ROLLER ASSY 150 DIA			
40	41897.01	BRACKET - ROLLER 150 LH	1
41	41897.02	BRACKET - ROLLER 150 RH	1
32	05.959.05	CIRCLIP - INT 62MM DIA	4
33	42954.01	BEARING - D/ROW BALL 30MM BORE	2
34	04.164.04	SEAL-LIP 40DIA X 10MM	2
35	05.953.01	GREASE NIPPLE M6	4
35	41851.01	CAP - BEARING RETAINER	2
36	05.234.01	WASHER 44.5 X 13 X 5MM PLATED	2
36	05.282.03	SPRING WASHER 12MM PLATED	2
36	05.625.10	SKT CAPSCRW M12X30 DOME HD PLT	2
*36	42955.04	ROLLER 150 DIA - 1200	1

*MAIN PART IN GROUP, RELATED PARTS HAVE SAME REFERENCE NUMBER



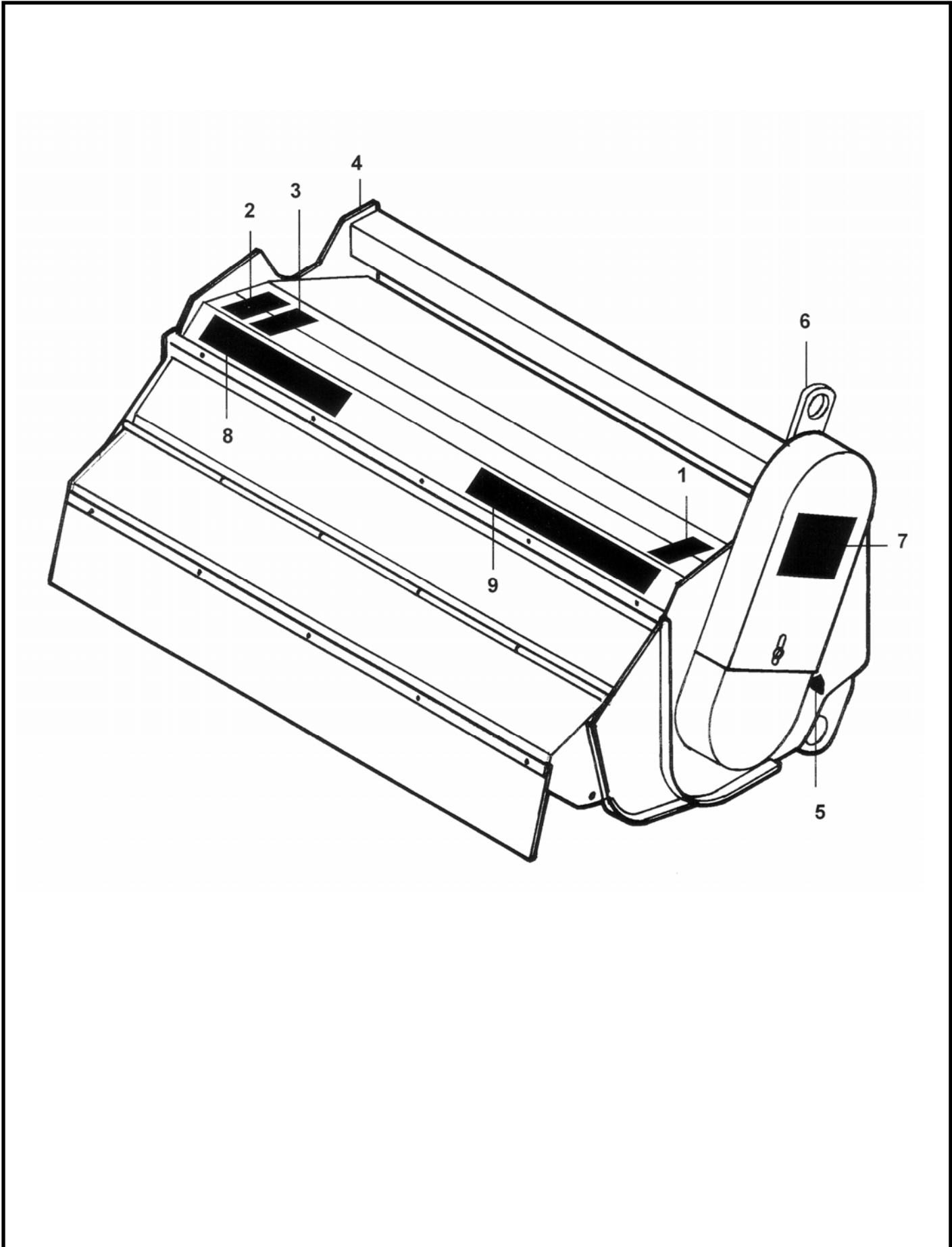
REF	PART NO.	DESCRIPTION	QTY
76.285.05 MOTOR 125L PULLEY & BELT			
01	01.071.13	KEY-SEP 1/4" X 1/4" X 1"	-
01	09.773.02	SEAL KIT FOR 09.773 MOTOR	-
*01	09.773.04	MOTOR 2TR044	1
01	41905.02	DECAL - 125	1
02	05.290.06	BONDED SEAL 3/4"BSP	2
03	05.373.01	ADAPTOR 3/4"BSP X 1"BSP	2
04	07.833.01	PLATE - COVER	1
05	05.281.03	FLAT WASHER 12MM PLATED	2
05	05.282.03	SPRING WASHER 12MM PLATED	2
05	05.286.03	NUT M12 PLATED	2
05	05.625.12	SOCKET DOMED SCREW M12X35 PLT	2
*05	41893.01	PLATE - MOTOR MOUNTING GEAR	1
*06	04.282.56	STUD M10 X 37MM	2
06	05.282.02	SPRING WASHER 10MM PLATED	2
06	05.286.02	NUT M10 PLATED	2
07	05.299.36	V-BELT XPA 1060 QUAD POWER	3
08	03.795.01	PULLEY-VEE 160MM PCD X 3SPA	1
09	05.424.07	TAPER-LOCK 1"BORE (2517)	1
10	05.424.17	TAPER-LOCK 45MM BORE (2517)	1
11	05.960.13	KEY-S/REP 14MM X 9MM X 45MM	1
12	03.795.03	PULLEY-VEE 140MM PCD X 3SPA	1

*MAIN PART IN GROUP, RELATED PARTS HAVE SAME REFERENCE NUMBER



REF	PART NO.	DESCRIPTION	QTY
76.287.15 ROTOR SHAFT 1200 ISMP			
30	41958.03	ROTOR SHAFT ASSEMBLY	1
31	05.775.10	BOLT - SPECIAL M14 X 94MM	32
32	05.282.04	SPRING WASHER 16MM PLATED	32
33	05.968.06	S.LOCKING NUT M14 (FINE) PLATE	32
34	05.895.01	SHACKLE-FORGED	32
35	05.281.04	FLAT WASHER 16MM PLATED	64
38	02.807.01	SPACER 1"O/D X 16MM I/D X 27MM	32
39	41654.01	FLAIL - FLARED 51 X 8	64
76.287.16 ROTOR SHAFT 1200 ISMP			
40	41958.04	ROTOR SHAFT ASSEMBLY	1
31	05.775.10	BOLT - SPECIAL M14 X 94MM	32
32	05.282.04	SPRING WASHER 16MM PLATED	32
33	05.968.06	S.LOCKING NUT M14 (FINE) PLATE	32
34	05.895.01	SHACKLE-FORGED	32
35	05.281.04	FLAT WASHER 16MM PLATED	32
37	7190166	FLAIL 40 X 6	64
38	02.807.01	SPACER 1"O/D X 16MM I/D X 27MM	32
76.287.13 & 14 ROTOR SHAFT 1200 ISMP			
50	41958.01	ROTOR SHAFT ASSEMBLY CLOCKWISE	1
50	41958.02	ROTOR SHAFT ASSEMBLY ANTICLOCKWISE	1
31	05.775.10	BOLT - SPECIAL M14 X 94MM	32
32	05.282.04	SPRING WASHER 16MM PLATED	32
33	05.968.06	S.LOCKING NUT M14 (FINE) PLATE	32
34	05.895.01	SHACKLE-FORGED	32
35	05.281.04	FLAT WASHER 16MM PLATED	64
36	02.959.01	FLAIL - FORGED	32
38	02.807.01	SPACER 1"O/D X 16MM I/D X 27MM	32
76.287.60 ROTOR SHAFT ASSY			
60	41958.11	ROTOR SHAFT ASSEMBLY	1
31	05.775.10	BOLT - SPECIAL M14 X 9MM	32
32	05.282.04	SPRING WASHER 16MM PLATED*	32
33	05.968.06	S.LOCKING NUT M14 (FINE) PLATE	32
34	05.895.01	SHACKLE-FORGED	32
35	05.281.04	FLAT WASHER 16MM PLATED*	64
38	02.807.01	SPACER 1" O/D X 16MM I/D X 27MM	32
51	43092.01	FLAIL 36 X 8	64

*MAIN PART IN GROUP, RELATED PARTS HAVE SAME REFERENCE NUMBER



REF	PART NO.	DESCRIPTION	QTY
72.855.03 DECALS - HEAD			
01	09.821.04	DECAL - DANGER THROWN DEBRIS	1
02	09.821.05	DECAL - CUTTING HEAD DANGER	1
03	09.821.08	DECAL - SAFEWORKING ON HEAD	1
04	09.821.10	DECAL - KEEP NUTS TIGHT	1
05	09.810.02	DECAL - GREASE (40 HOURS)	4
06	09.843.02	DECAL - LIFT POINT 350 KG	2
07	41.054.02 ▲	DECAL - HEAD GUARDING	1
08	09.837.01	DECAL - BOMFORD	1
09	41582.03	DECAL - TRIM-KING	1

(▲TVSA578)