

PM1928

TRI-WING

TRI-WING 4600
FLEX WING MOWERS
PARTS MANUAL
ISSUE 3

IMPORTANT

NOTE HERE THE SERIAL NUMBER OF YOUR MACHINE AND ALWAYS QUOTE IT IN ANY COMMUNICATION WITH US OR YOUR DEALER. THIS IS PARTICULARLY IMPORTANT WHEN ORDERING SPARES. REMEMBER TO INCLUDE ALL NUMBERS AND LETTERS.

MACHINE SERIAL NUMBERS _____

THE INFORMATION GIVEN THROUGHOUT THIS MANUAL IS CORRECT AT THE TIME OF PUBLICATION. HOWEVER, IN THE COURSE OF CONSTANT DEVELOPMENT OF BOMFORD TURNER MACHINES, CHANGES IN SPECIFICATION ARE INEVITABLE. SHOULD YOU FIND THE INFORMATION GIVEN IN THIS BOOK TO BE AT VARIANCE WITH THE MACHINE IN YOUR POSSESSION, YOU ARE ADVISED TO CONTACT THE BOMFORD TURNER SERVICE DEPARTMENT WHERE UP-TO-DATE INFORMATION WILL BE PROVIDED.

THE MANUAL CAN CONTAIN STANDARD AND OPTIONAL FEATURES AND IS NOT TO BE USED AS A MACHINE SPECIFICATION.

THE MACHINE HAS BEEN TESTED AND IS CONSIDERED SAFE IF CAREFULLY USED. ENSURE YOUR OPERATOR IS PROPERLY TRAINED IN ITS USE AND MAINTENANCE.

IMPORTANT

NOTEZ ICI LES NUMEROS DE SERIE DE VOTRE MACHINE ET MENTIONNEZ LES DANS TOUTE COMMUNICATION AVEC NOS SERVICES OU VOTRE REVENDEUR. CECI EST IMPORTANT POUR LA COMMANDE DE PIECES DETACHEES. PENSEZ A NOTER TOUS LES NUMEROS ET TOUTES LES LETTERS.

NUMEROS DE SERIE DE LA MACHINE _____

LES INFORMATIONS DONNEES DANS CE MANUEL SONT CORRECTES CEPENDANT, DU FAIT DE DEVELOPPEMENT CONSTANT DES MACHINES BOMFORD TURNER.

CHANGEMENTS DANS LES CARACTERISTIQUES SONT INEVITABLES.

SI VOUS TROUVEZ QUE LES INFORMATIONS DONNEES NE CORRESPONDENT PAS A VOTRE MACHINE VEUILLEZ CONTACTER LE SERVICE DES REPARATIONS OU DES INFORMATIONS PLUS RECENTES VOUS SERONT DONNEES.

CE MANUEL PEUT MONTRER DES CARACTERISTIQUES OPTIONNELLES ET NE PEUT PAS ETRE CONSIDERE COMME SPECIFICATION DE LA MACHINE.

CETTE MACHINE A ETE TESTEE, ET ELLE EST CONSIDEREE COMME FIABLE A CONDITION D'UNE BONNE UTILISATION. ASSUREZ-VOUS QUE VOTRE OPERATEUR EST QUALIFIE EN CE QUI CONCERNE L'UTILISATION DE LA MACHINE AINSI QUE SON ENTRETIEN.

WICHTIG

TRAGEN SIE HIER DIE SERIENNUMMERN IHRER MASCHINE EIN UND GEBEN SIE DIESE IMMER AN, WENN SIE SICH AN UNS ODER IHREN HÄNDLER WENDEN. DAS IST BESONDERS BEI ERSATZTEILBESTELLUNGEN WICHTIG. VERGESSEN SIE NICHT, ALLE ZAHLEN UND BUCHSTABEN ZU NOTIEREN.

SERIENNUMMERN DER MASCHINE _____

DIE ANGABEN IN DIESEM HANDBUCH SIND BEI VERÖFFENTLICHUNG KORREKT. AUFGRUND DER KONSTANTEN WEITERENTWICKLUNG VON BOMFORD TURNER MASCHINEN SIND JEDOCH ÄNDERUNGEN IN DER SPEZIFIKATION UNVERMEIDLICH. WENN DIE INFORMATION IN DIESEM HANDBUCH NICHT MIT IHRER MASCHINE ÜBEREINSTIMMEN, NEHMEN SIE BITTE KONTAKT MIT DER BOMFORD TURNER KUNDENDIENSTABTEILUNG AUF, DIE IHNEN GERNE DIE AKTUELLEN INFORMATION ZUKOMMEN LÄSST.

DAS HANDBUCH KANN SOWOHL BESCHREIBUNGEN FÜR DIE STANDARD AUSFÜHRUNG ALS AUCH FÜR ZUBEHÖR ENTHALTEN UND IST NICHT ALS MASCHINENSPEZIFIKATION ZU VERWENDET.

DIE MASCHINE IST GETESTET UND BEI SACHGEMÄSSEM BETRIEB ALS SICHER BEFUNDEN WORDEN. SORGEN SIE DAFÜR, DASS IHR BEDIENPERSONAL IN ANWENDUNG UND WARTUNG RICHTIG GESCHULT WIRD.

TRI-WING MOWERS

PAGE ILLUSTRATION NUMBERS SHOWN ARE USED ONLY FOR REFERENCE PURPOSES AND SHOULD NOT BE USED FOR ORDERING SPARE PARTS.
PLEASE ENSURE THE CORRECT PART NUMBER AND DESCRIPTION IS GIVEN WHEN ORDERING SPARE PARTS.

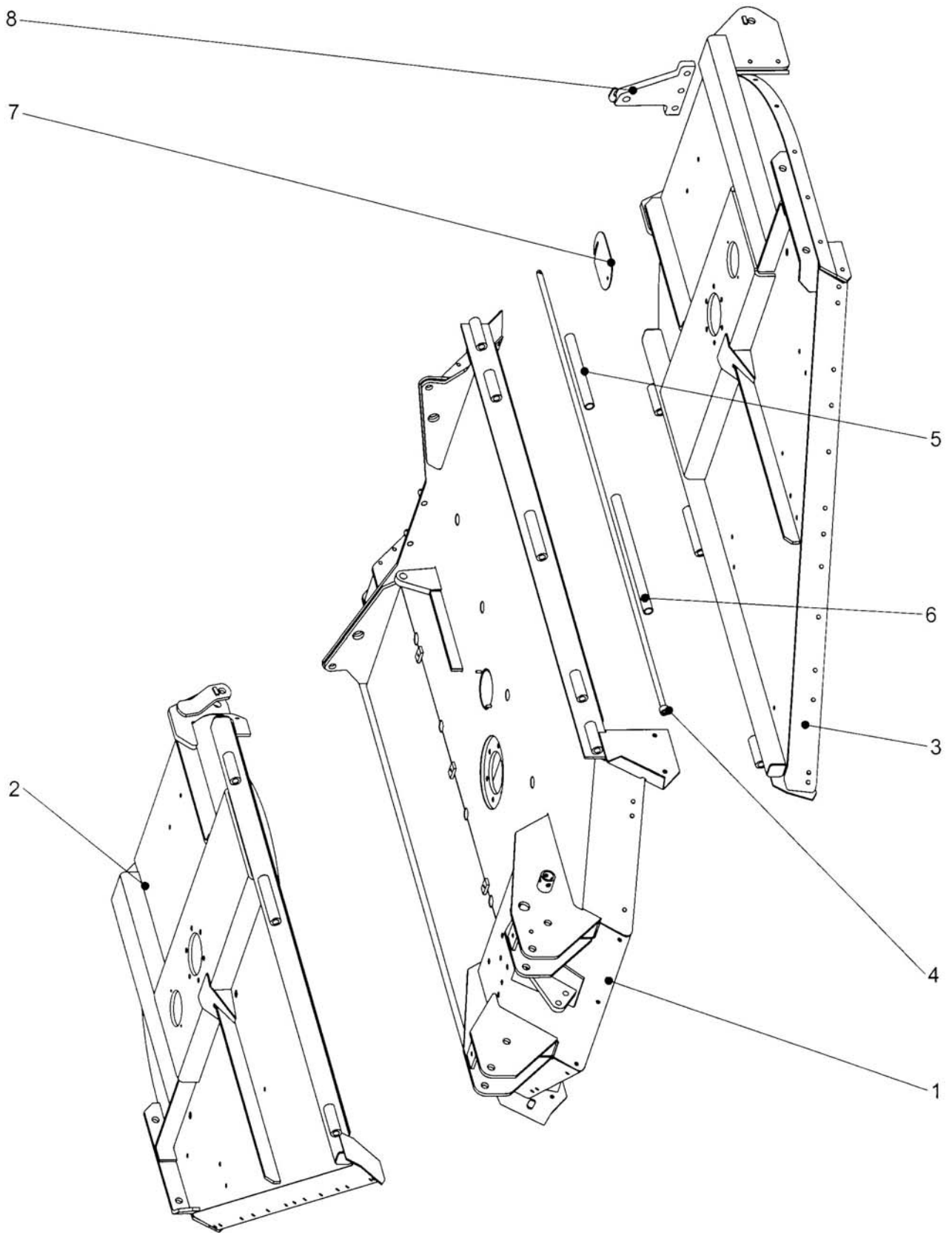
| PAGE NO | DESCRIPTION |
|------------------|-------------------------------|
| 2 – 1 TO 2 – 2 | CENTRE DECK & WING ASSEMBLIES |
| 3 – 1 TO 3 – 2 | CHAINGUARDS |
| 4 – 1 TO 4 – 2 | BAFFLE ASSEMBLIES |
| 5 – 1 TO 5 – 2 | SIDE SKIRTS & SKIDS |
| 6 – 1 TO 6 – 2 | DRIVELINE GUARDS |
| 7 – 1 TO 7 – 4 | HITCH AND LEVELLING ASSEMBLY |
| 8 – 1 TO 8 – 2 | GEARBOXES AND DRIVESHAFTS |
| 9 – 1 TO 9 – 2 | HYDRAULIC RAM ASSEMBLIES |
| 10 – 1 TO 10 – 2 | HYDRAULIC FITTINGS & HOSES |
| 11 – 1 TO 11 – 2 | WHEELS, HUBS & AXLES |
| 12 – 1 TO 12 – 4 | BLADE ASSEMBLIES |
| 13 – 1 TO 13 – 2 | ROAD LIGHTING KIT |
| 14 – 1 TO 14 – 2 | DECALS |

IMPORTANT

THIS MACHINE IS FOR VEGETATION CONTROL AND MUST NOT BE USED FOR ANY OTHER PURPOSE.

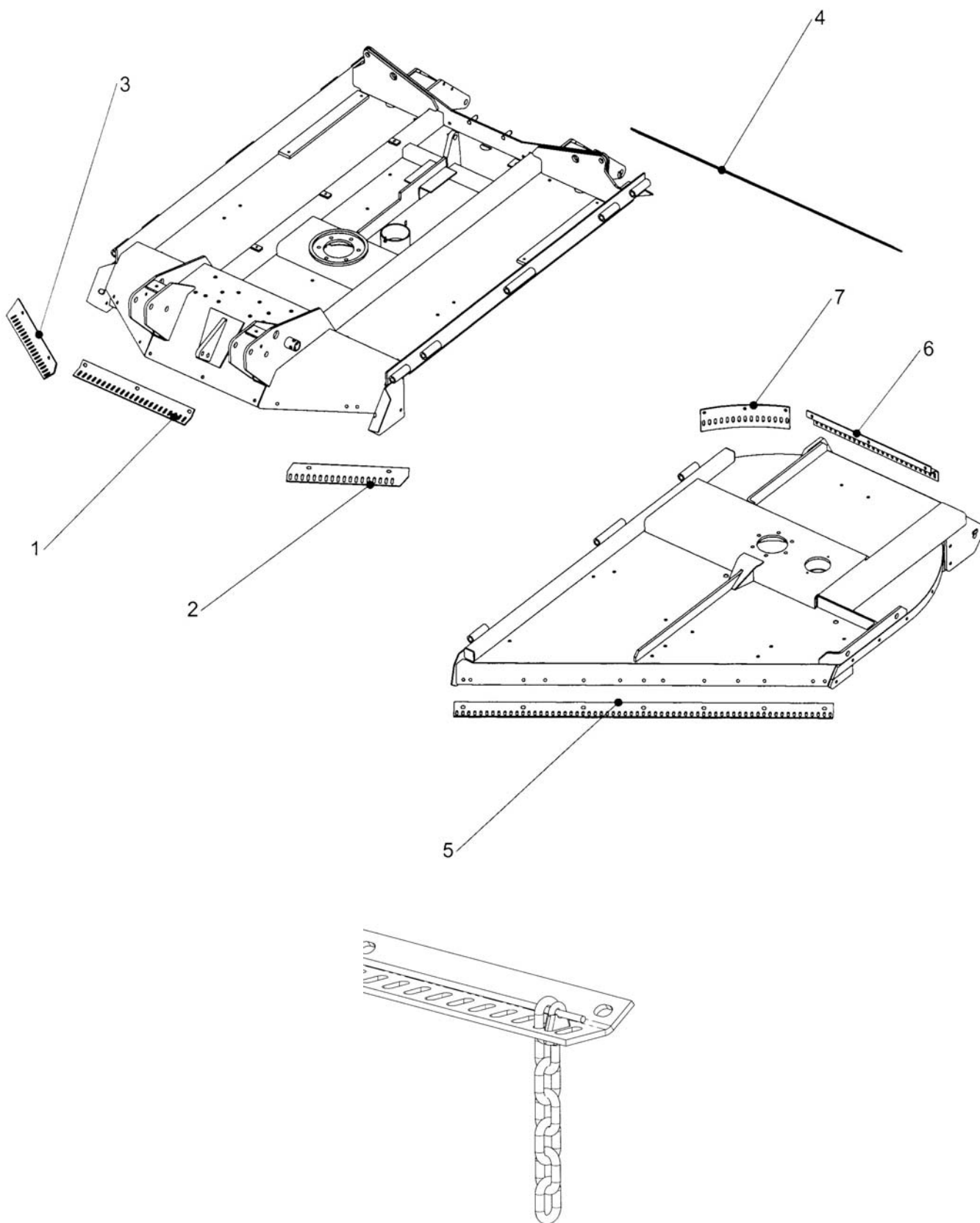
IT IS POTENTIALLY HAZARDOUS TO FIT OR USE ANY PARTS OTHER THAN GENUINE BOMFORD TURNER PARTS.

THE COMPANY DISCLAIMS ALL LIABILITY FOR THE CONSEQUENCES OF SUCH USE WHICH, IN ADDITION, VOIDS THE MACHINE WARRANTY.



| REF | PART NO | DESCRIPTION | QTY |
|-----------|---------------------|-------------------------------------|-----|
| 77.500.10 | MAINFRAME AND WINGS | | |
| 01 | 46992.01 | CENTRE DECK | 1 |
| 02 | 46992.02 | RH WING | 1 |
| 03 | 46992.05 | LH WING | 1 |
| 04 | 45221.01 | PIN – WING HINGE | 2 |
| 04 | 05.264.03 | SETSCREW M8 X 30MM | 2 |
| 04 | 05.281.01 | FLAT WASHER M8 | 2 |
| 04 | 05.287.01 | SELF LOCKING NUT M8 | 2 |
| 05 | 45257.01 | SPACER HINGE SHORT | 2 |
| 06 | 45257.02 | SPACER HINGE LONG | 2 |
| 07 | 46774.88 | COVER PLATE | 3 |
| 07 | 03.100.01 | STUD M10 X 34MM (WING COVER PLATES) | 4 |
| 07 | 05.287.02 | SELF LOCKING NUT M10 | 6 |
| 08 | 46992.11 | LIFTING PLATE | 2 |
| 08 | 05.281.05 | FLAT WASHER 20MM | 6 |
| 08 | 05.291.45 | BOLT M20 X 70MM | 6 |
| 09 | 45956.01 | TENSIONER STRAP <i>N/I</i> | 2 |

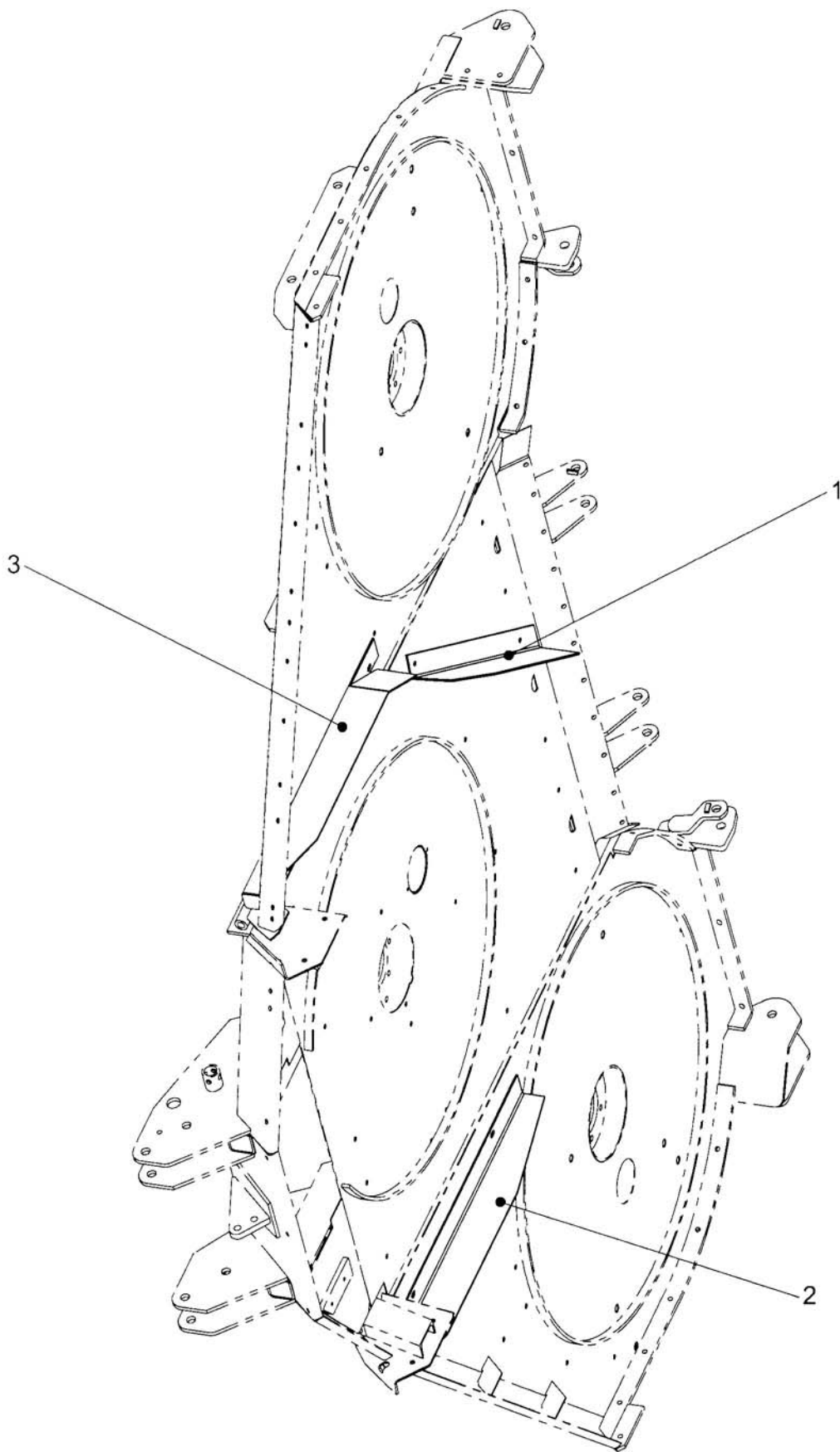
N/I = NOT ILLUSTRATED



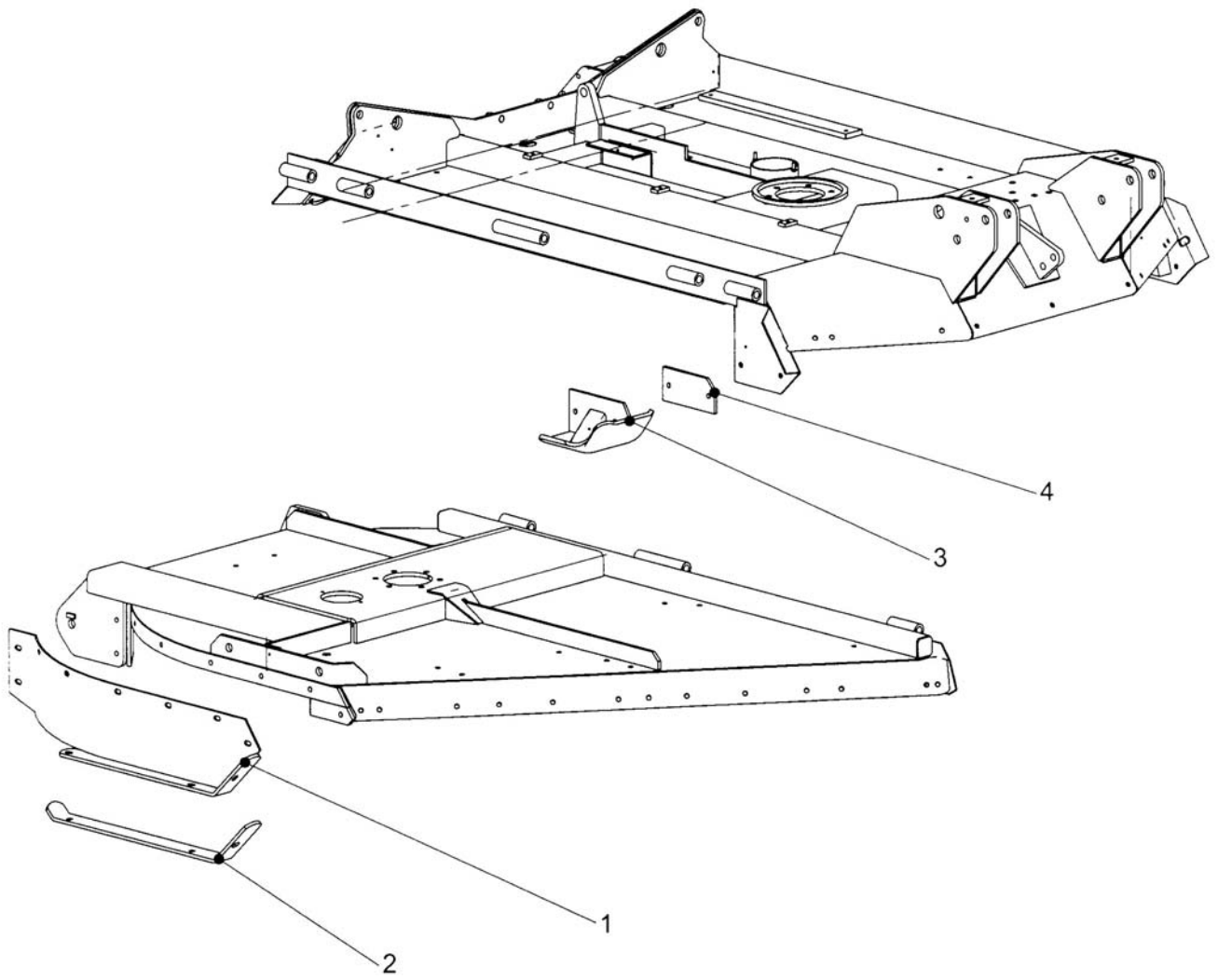
Chain Retention (After March 2006)

| REF | PART NO | DESCRIPTION | QTY |
|-----------|-----------|----------------------------------|-----|
| 77.500.12 | | CHAIN GUARDS - CENTRE AND WINGS | |
| 01 | 45162.32 | CHAIN GUARD CENTRE DECK FRONT | 1 |
| 01 | 47057.14 | RETENTION BAR 616 LG | 1 |
| 01 | 46943.21 | CHAIN ASSEMBLY | 23 |
| 01 | 46192.01▶ | PUSH ON RETAINER | 2 |
| 01 | 6770907◀ | U BOLT | 2 |
| 01 | 9143003◀ | NUT M 6 COARSE | 4 |
| 01 | 05.264.23 | SETSCREW M12 X 30MM | 3 |
| 01 | 05.281.03 | FLAT WASHER M12 | 3 |
| 01 | 05.287.03 | SELF LOCKING NUT M12 | 3 |
| 02 | 45173.06 | CHAIN GUARD CENTRE DECK FRONT LH | 1 |
| 02 | 47057.14 | RETENTION BAR 616 LG | 1 |
| 02 | 46943.21 | CHAIN ASSEMBLY | 18 |
| 02 | 46192.01▶ | PUSH ON RETAINER | 2 |
| 02 | 6770907◀ | U BOLT | 2 |
| 02 | 9143003◀ | NUT M 6 COARSE | 4 |
| 02 | 05.264.23 | SETSCREW M12 X 30MM | 2 |
| 02 | 05.281.03 | FLAT WASHER M12 | 2 |
| 02 | 05.287.03 | SELF LOCKING NUT M12 | 2 |
| 03 | 45173.03 | CHAIN GUARD CENTRE DECK FRONT RH | 1 |
| 03 | 47057.14 | RETENTION BAR 616 LG | 1 |
| 03 | 46943.21 | CHAIN ASSEMBLY | 18 |
| 03 | 46192.01▶ | PUSH ON RETAINER | 2 |
| 03 | 6770907◀ | U BOLT | 2 |
| 03 | 9143003◀ | NUT M 6 COARSE | 4 |
| 03 | 05.264.23 | SETSCREW M12 X 30MM | 2 |
| 03 | 05.281.03 | FLAT WASHER M12 | 2 |
| 03 | 05.287.03 | SELF LOCKING NUT M12 | 2 |
| 04 | 45162.33 | CHAIN GUARD CENTRE DECK REAR | 1 |
| 04 | 47057.11 | RETENTION BAR 1574 LG | 1 |
| 04 | 46943.21 | CHAIN ASSEMBLY | 55 |
| 04 | 46192.01▶ | PUSH ON RETAINER | 2 |
| 04 | 6770907◀ | U BOLT | 2 |
| 04 | 9143003◀ | NUT M 6 COARSE | 4 |
| 04 | 05.264.23 | SETSCREW M12 X 30MM | 6 |
| 04 | 05.281.03 | FLAT WASHER M12 | 6 |
| 04 | 05.287.03 | SELF LOCKING NUT M12 | 6 |
| 05 | 45162.31 | CHAIN GUARD WING FRONT | 2 |
| 05 | 47057.10 | RETENTION BAR 1800 LG | 2 |
| 05 | 46943.21 | CHAIN ASSEMBLY | 126 |
| 05 | 46192.01▶ | PUSH ON RETAINER | 4 |
| 05 | 6770907◀ | U BOLT | 2 |
| 05 | 9143003◀ | NUT M 6 COARSE | 4 |
| 05 | 05.264.23 | SETSCREW M12 X 30MM | 14 |
| 05 | 05.281.03 | FLAT WASHER M12 | 14 |
| 05 | 05.287.03 | SELF LOCKING NUT M12 | 14 |
| 06 | 45173.01 | CHAIN GUARD WING REAR | 2 |
| 06 | 47057.12 | RETENTION BAR 752 LG | 2 |
| 06 | 46943.21 | CHAIN ASSEMBLY | 52 |
| 06 | 46192.01▶ | PUSH ON RETAINER | 4 |
| 06 | 6770907◀ | U BOLT | 2 |
| 06 | 9143003◀ | NUT M 6 COARSE | 4 |
| 06 | 05.264.25 | SETSCREW M12 X 40MM | 6 |
| 06 | 05.281.03 | FLAT WASHER M12 | 6 |
| 06 | 05.287.03 | SELF LOCKING NUT M12 | 6 |
| 07 | 45173.04 | CHAIN GUARD WING REAR CENTRE | 2 |
| 07 | 47057.13 | RETENTION BAR 672 LG | 2 |
| 07 | 46943.21 | CHAIN ASSEMBLY | 30 |
| 07 | 46192.01▶ | PUSH ON RETAINER | 4 |
| 07 | 6770907◀ | U BOLT | 2 |
| 07 | 9143003◀ | NUT M 6 COARSE | 4 |
| 07 | 45176.01 | SPACER | 6 |
| 07 | 05.292.22 | BOLT M12 X 90MM | 6 |
| 07 | 05.287.03 | SELF LOCKING NUT M12 | 6 |

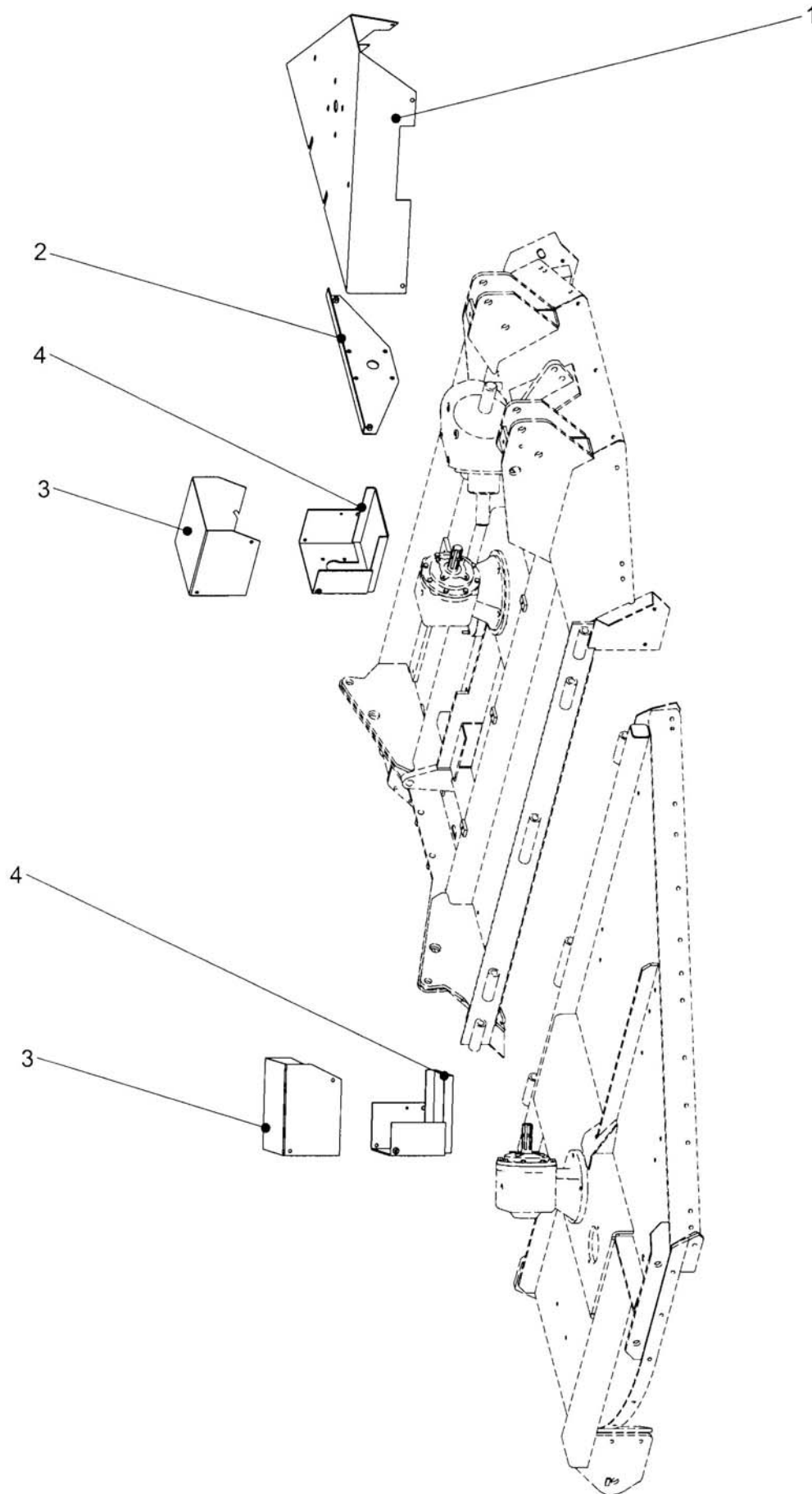
▶ Up to February 2006 ◀ From March 2006



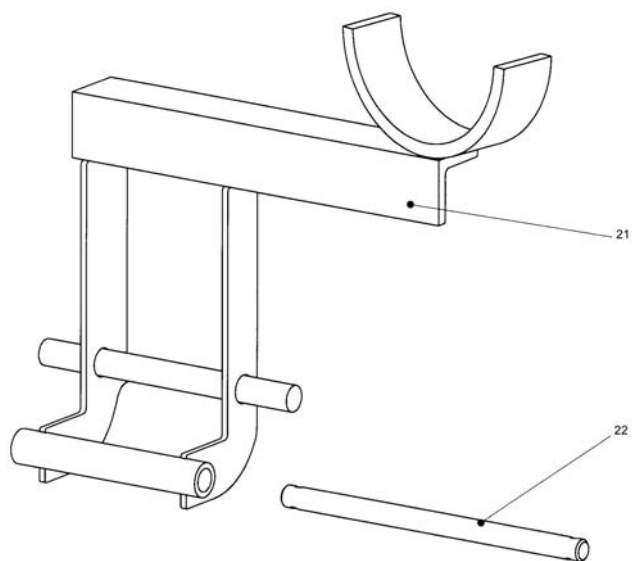
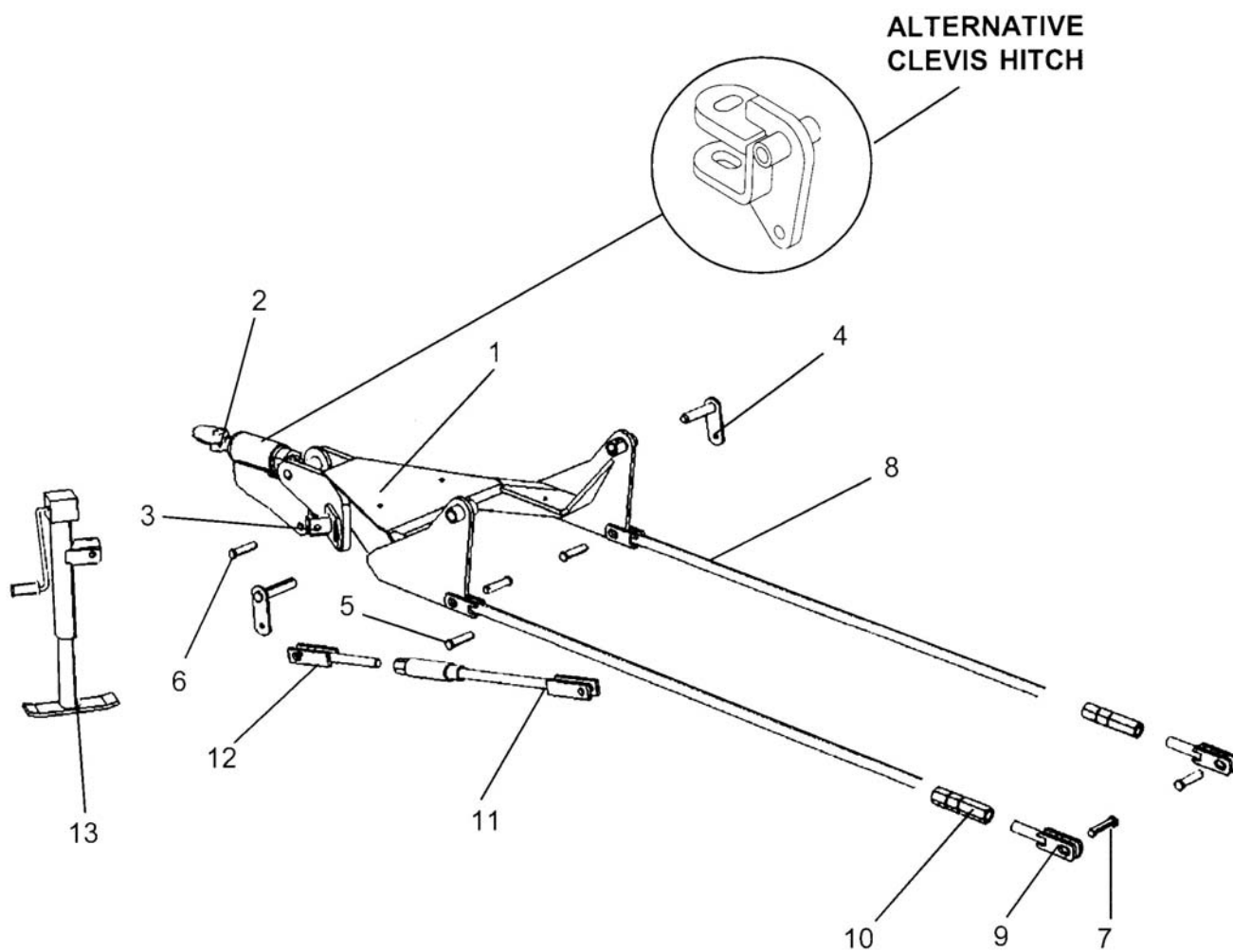
| REF | PART NO | DESCRIPTION | QTY |
|---------|----------------------------|----------------------|-----|
| 1048523 | BAFFLES - CENTRE AND WINGS | | |
| 01 | 45315.06 | CENTRE BAFFLE | 1 |
| 01 | 05.264.23 | SETSCREW M12 X 30MM | 2 |
| 01 | 05.281.03 | FLAT WASHER 12MM | 4 |
| 01 | 05.287.03 | SELF LOCKING NUT M12 | 2 |
| 02 | 45315.05 | RH BAFFLE | 1 |
| 02 | 05.264.23 | SETSCREW M12 X 30MM | 2 |
| 02 | 05.281.03 | FLAT WASHER 12MM | 4 |
| 02 | 05.287.03 | SELF LOCKING NUT M12 | 2 |
| 03 | 45315.02 | LH BAFFLE | 1 |
| 03 | 05.264.23 | SETSCREW M12 X 30MM | 2 |
| 03 | 05.281.03 | FLAT WASHER 12MM | 4 |
| 03 | 05.287.03 | SELF LOCKING NUT M12 | 2 |



| REF | PART NO | DESCRIPTION | QTY |
|---------|-----------|-----------------------|-----|
| 1048505 | | SIDE SKIRTS & SKIDS | |
| 01 | 45238.01 | SIDE SKIRT LH | 1 |
| 01 | 45238.02 | SIDE SKIRT RH | 1 |
| 01 | 05.264.25 | SETSCREW M12 X 40 | 16 |
| 01 | 05.281.03 | FLAT WASHER 12MM | 16 |
| 01 | 05.287.03 | SELF LOCKING NUT M12 | 16 |
| 02 | 45238.03 | SKID SHOE LH | 1 |
| 02 | 45238.04 | SKID SHOE RH | 1 |
| 02 | 6012034 | PLOUGH BOLT 7/16" UNF | 6 |
| 02 | 05.288.03 | NUT 7/16" UNF | 6 |
| 03 | 45239.01 | SKID LH | 1 |
| 03 | 45239.02 | SKID RH | 1 |
| 03 | 05.264.23 | SETSCREW M12 X 30 | 4 |
| 03 | 05.287.03 | SELF LOCKING NUT M12 | 4 |
| 04 | 45239.33 | SPACER PLATE | 2 |



| REF | PART NO | DESCRIPTION | QTY |
|-----------|------------------|-------------------------------|-----|
| 77.500.14 | DRIVELINE GUARDS | | |
| 01 | 45231.01 | GUARD - DIVIDER GEARBOX | 1 |
| 01 | 05.256.22 | SETSCREW 1/2" UNC X 1" | 6 |
| 01 | 0100205 | SPRING WASHER 1/2" | 6 |
| 02 | 45231.02 | STIFFENER | 1 |
| 03 | 45183.01 | GEARBOX GUARD SUPPORT BRACKET | 3 |
| 03 | 0312062 | SETSCREW 5/16" UNC X 3/4" | 12 |
| 03 | 0100202 | SPRING WASHER 5/16" | 12 |
| 03 | 0111001 | NUT 1/4" UNF | 3 |
| 04 | 45187.01 | GEARBOX GUARD | 3 |

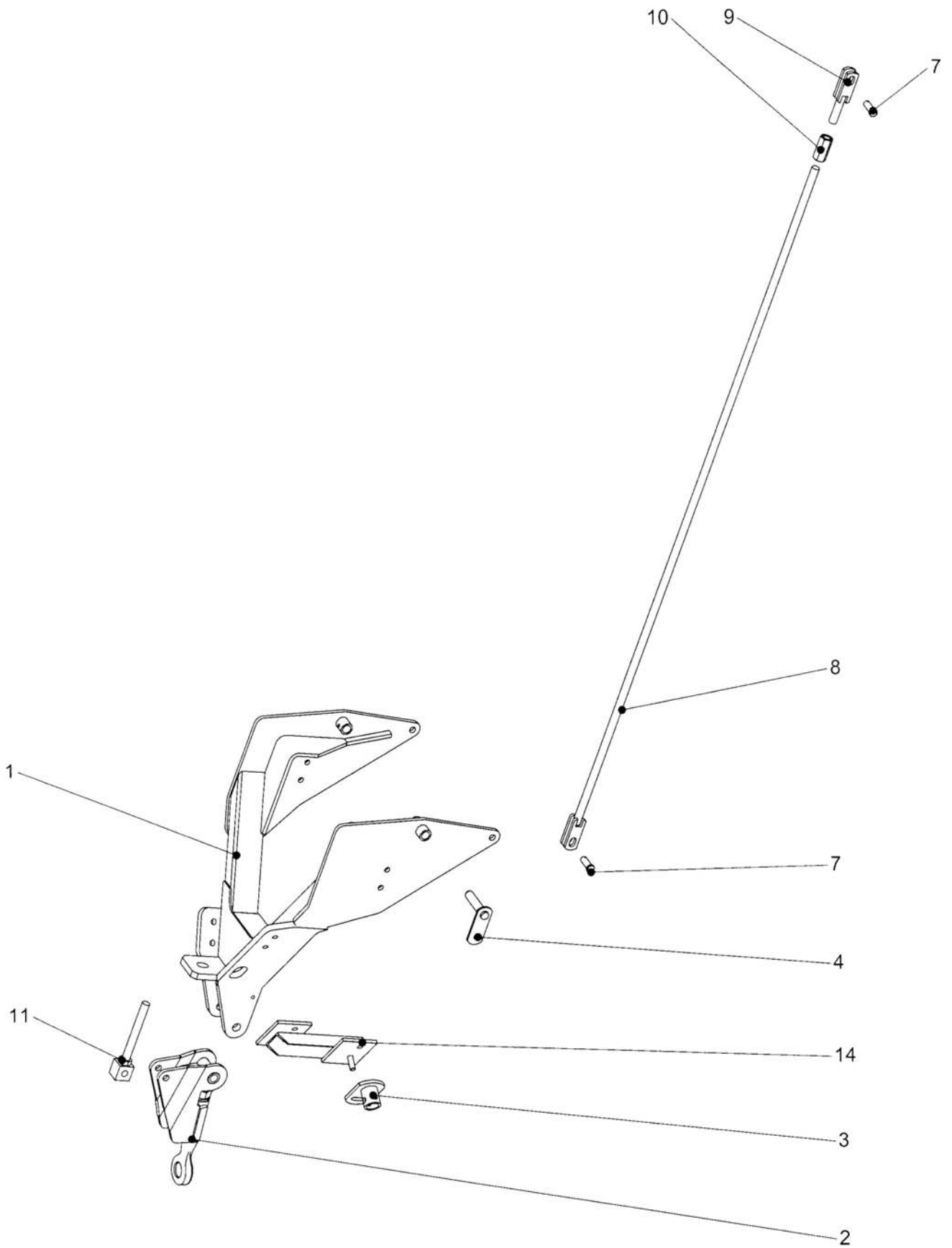


| REF | PART NO | DESCRIPTION | QTY |
|--|-----------|-------------------------|-----|
| 1048502/1048522 HITCH AND LEVELLING ASSEMBLY (PINTLE/CLEVIS) | | | |
| 01 | 45203.01 | LONG TONGUE W/ASSY | 1 |
| 01 | 0901121 | GREASE NIPPLE 1/8" BSP | 2 |
| 02 | 45235.01 | PINTLE HITCH EYE | 1 |
| 02 | 45945.01 | CLEVIS HITCH | 1 |
| 02 | 0211569 | BOLT 1" UNF X 7" | 1 |
| 02 | 0141009 | NUT 1"UNF CLEVELOK | 1 |
| 03 | 45186.01 | JACK MOUNT W/ASSY | 1 |
| 03 | 00764515 | CHAIN-SAFETY | 1 |
| 03 | 9213117 | BOLT M16 X 55 | 2 |
| 03 | 9143007 | M16 CLEVELOK NUT | 2 |
| 04 | 45185.01 | PIN-PIVOT W/ASSY | 2 |
| 04 | 9313066 | BOLT M12 X 30 COURSE | 2 |
| 04 | 9143006 | NUT M12 CLEVELOK | 2 |
| 05 | 45213.01 | PIN | 1 |
| 05 | 9501326 | SPLIT PIN 5DIA X 32MM | 1 |
| 06 | 45213.02 | PIN | 1 |
| 06 | 9501326 | SPLIT PIN 5DIA X 32MM | 1 |
| 07 | 45213.03 | PIN | 4 |
| 07 | 9501326 | SPLIT PIN 5DIA X 32MM | 4 |
| 07 | 0100107 | 3/4" FLAT WASHER | 4 |
| 08 | 45226.01 | LEVEL ROD-LONG W/ASSY | 2 |
| 09 | 45226.02 | LEVEL ROD-SHORT W/ASSY | 2 |
| 09 | 30.070,62 | M24 THIN NUT | 2 |
| 10 | 45227.01 | NUT ADJUSTMENT | 2 |
| 11 | 45232.11 | CONTROL ROD-LONG W/ASSY | 1 |
| 12 | 45232.12 | CONTROL ROD W/ASSY | 1 |
| 12 | 30.070,62 | M24 THIN NUT | 1 |
| 13 | 1048060 | JACK ASSEMBLY | 1 |

21182.27 PTO SUPPORT BRACKET

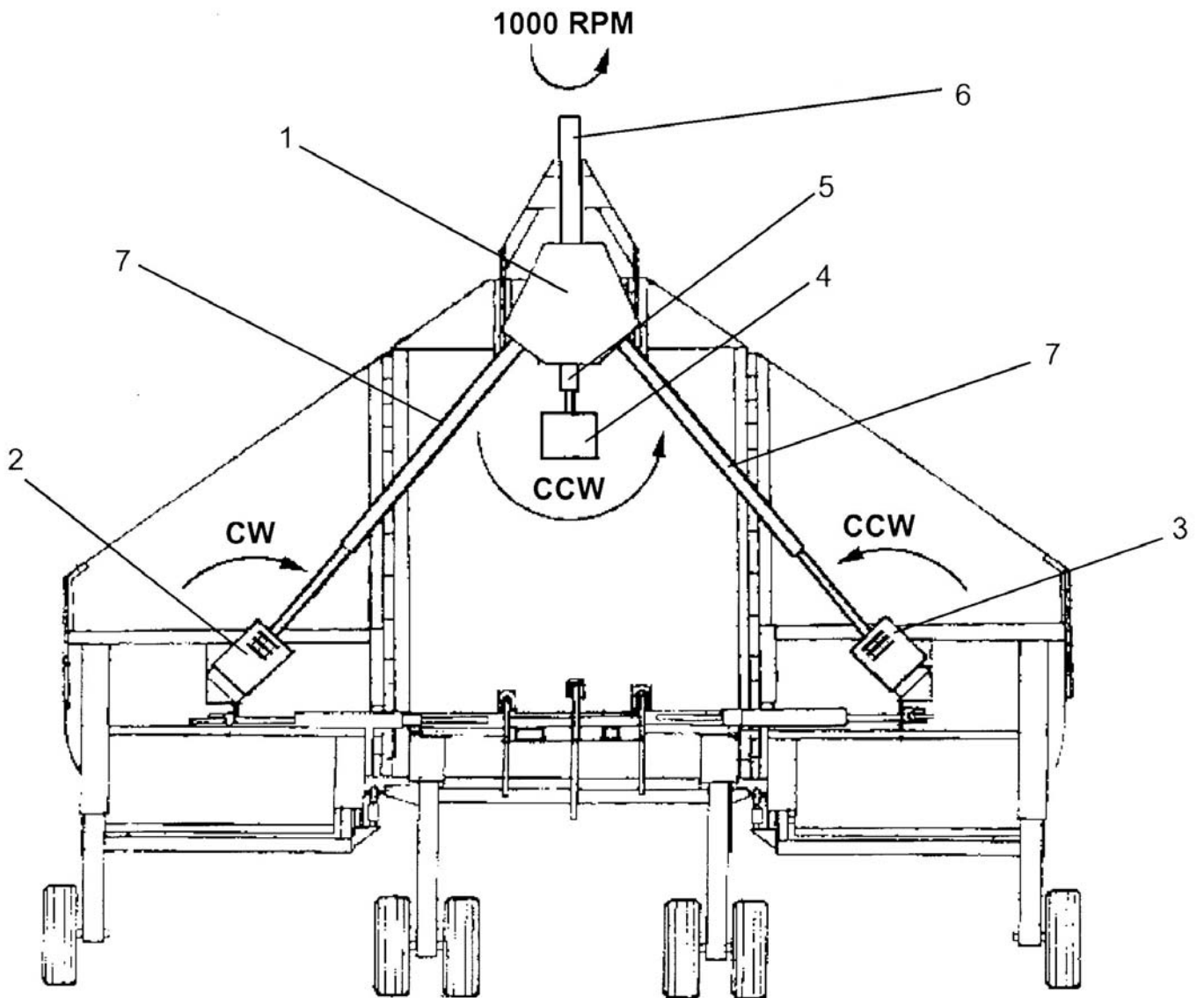
| | | | |
|----|----------|---------------------|---|
| 21 | 21182.01 | PTO SUPPORT BRACKET | 1 |
| 22 | 21182.36 | PIVOT BAR | 1 |
| 22 | 9501255 | COTTER PIN | 2 |

Non UK Markets

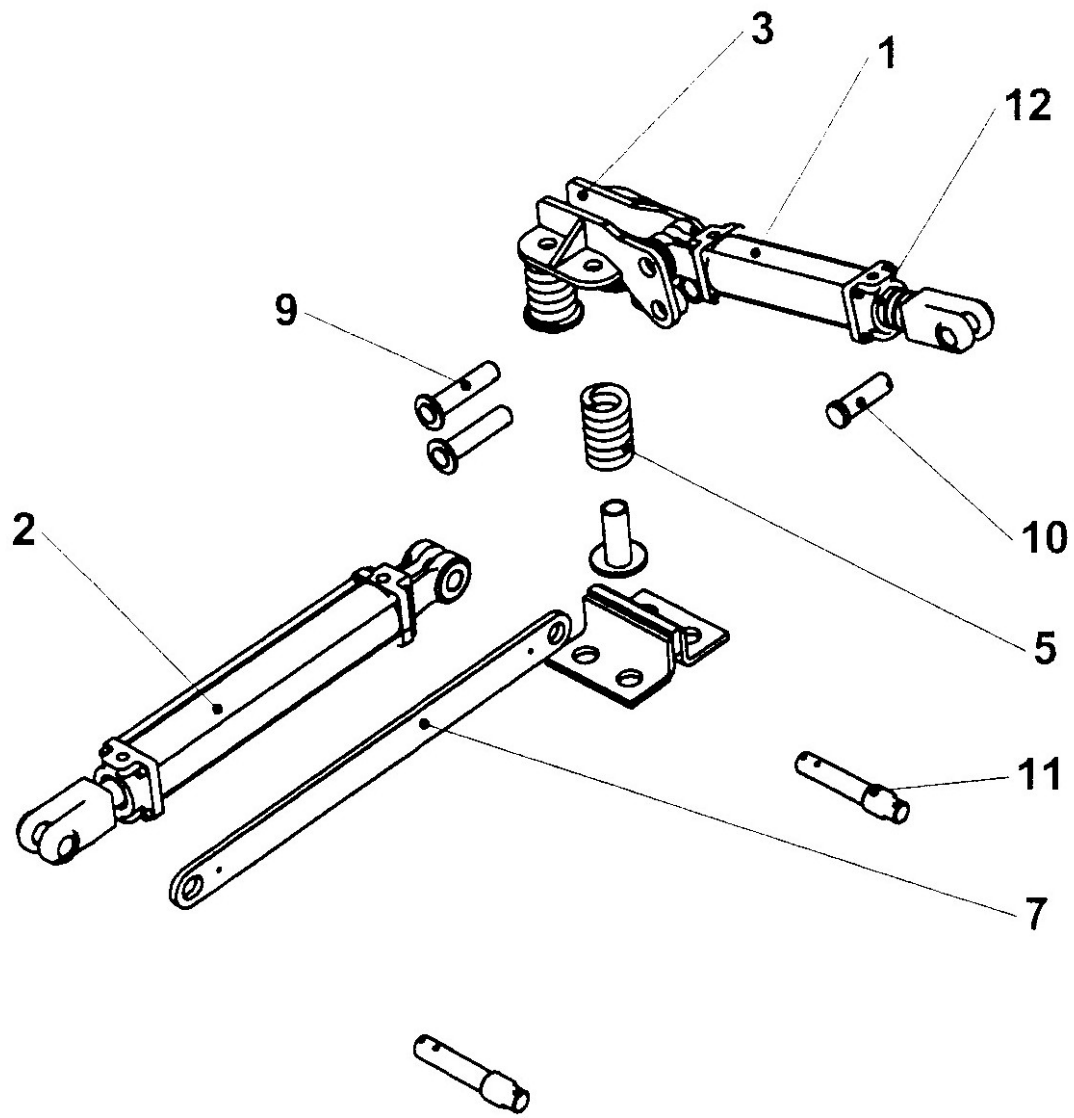


| REF | PART NO | DESCRIPTION | QTY |
|---------|-----------|--|-----|
| 1048512 | | HIGH HITCH AND LEVELLING ASSEMBLY (Non UK Markets) | |
| 01 | 44203.02 | HIGH HITCH | 1 |
| 02 | 45235.03 | SMALL PINTLE HITCH EYE | 1 |
| 02 | 01.070.04 | GREASE NIPPLE | 1 |
| 02 | 0211569 | BOLT 1" UNF X 7" | 1 |
| 02 | 05.295.07 | NUT 1" UNF | 1 |
| 03 | 45186.01 | JACK MOUNT W/ASSY | 1 |
| 03 | 00764515 | CHAIN-SAFETY | 1 |
| 03 | 05.291.36 | BOLT M16 X 55 | 2 |
| 03 | 05.286.04 | M16 NUT | 2 |
| 04 | 45185.01 | PIN-PIVOT W/ASSY | 2 |
| 04 | 05.264.23 | SETSCREW M12 X 30 | 2 |
| 04 | 9143006 | NUT M12 | 2 |
| 07 | 45213.03 | PIN | 4 |
| 07 | 9501326 | SPLIT PIN 5DIA X 32MM | 4 |
| 07 | 0100107 | 3/4" FLAT WASHER | 4 |
| 08 | 45226.01 | LEVEL ROD-LONG W/ASSY | 2 |
| 09 | 45226.02 | LEVEL ROD-SHORT W/ASSY | 2 |
| 09 | 30.070.62 | M24 THIN NUT | 2 |
| 10 | 45227.01 | NUT ADJUSTMENT | 2 |
| 11 | 45203.03 | ADJUSTER ROD | 1 |
| 11 | 05.286.06 | M24 NUT | 2 |
| 11 | 05.255.38 | BOLT 3/4" UNC X 4 1/2" | 1 |
| 11 | 05.289.07 | NUT 3/4" UNC | 1 |
| 13 | 1048060 | JACK ASSEMBLY <i>N/I</i> | 1 |
| 14 | 45407.01 | JACK ADAPTOR | 1 |
| 14 | 05.291.36 | BOLT M16 X 55 | 2 |
| 14 | 05.286.04 | M16 NUT | 2 |
| 15 | 45380.46 | PTO SUPPORT STRAP <i>N/I</i> | 1 |
| 15 | 45830.21 | CLEAT <i>N/I</i> | 4 |
| 15 | 45830.22 | ROD <i>N/I</i> | 2 |
| 15 | 0100106 | FLAT WASHER | 4 |

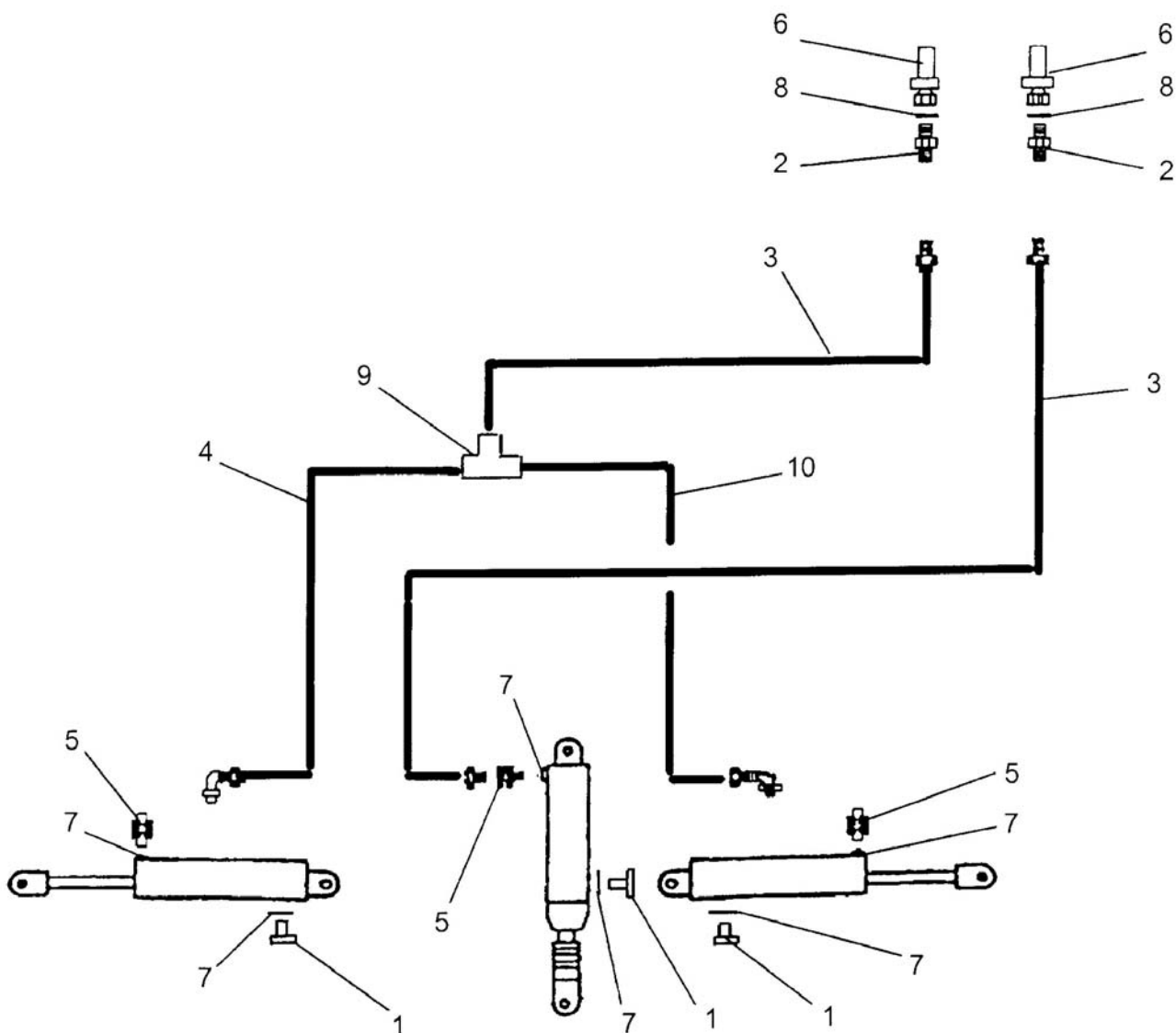
N/I = PART NOT ILLUSTRATED



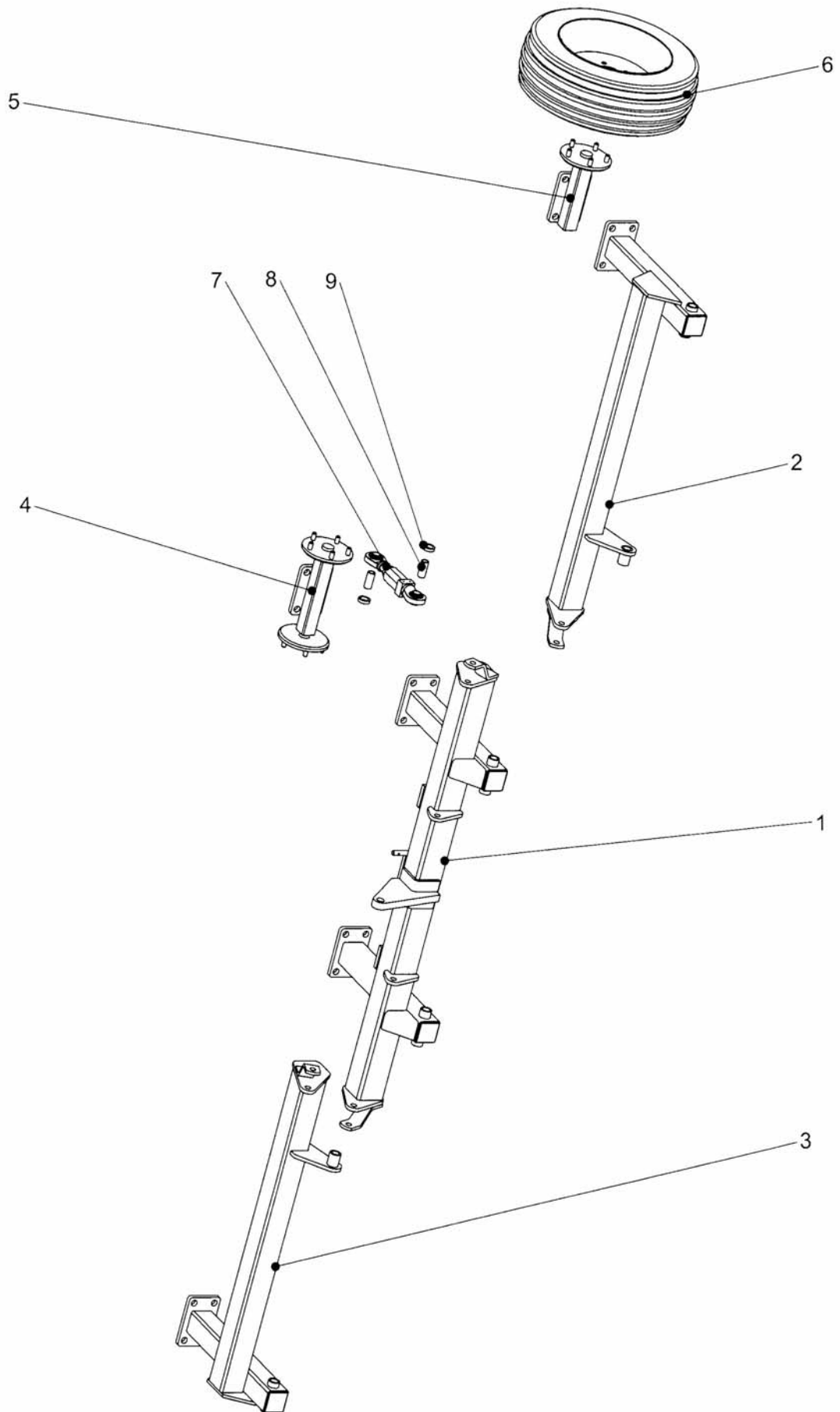
| REF | PART NO | DESCRIPTION | QTY |
|---------|--------------------|----------------------------|-----|
| 1048507 | GEARBOXES & SHAFTS | | |
| 01 | 00769116P | GEARBOX – DIVIDER | 1 |
| 01 | 05.256.34 | SETECREW 5/8" UNC X 1 1/2" | 4 |
| 01 | 05.281.04 | FLAT WASHER 16MM | 4 |
| 01 | 05.282.04 | SPRING WASHER 16MM | 4 |
| 02 | 00769918P | GEARBOX – LEFT WING | 1 |
| 02 | 05.252.35 | BOLT 5/8" UNF X 2 1/4" | 6 |
| 02 | 05.295.05 | SELF LOCKING NUT 5/8" UNF | 6 |
| 03 | 00769921P | GEARBOX – RIGHT WING | 1 |
| 03 | 05.252.35 | BOLT 5/8" UNF X 2 1/4" | 6 |
| 03 | 05.295.05 | SELF LOCKING NUT 5/8" UNF | 6 |
| 04 | 00769924P | GEARBOX – CENTRE | 1 |
| 04 | 05.252.35 | BOLT 5/8" UNF X 2 1/4" | 6 |
| 04 | 05.295.05 | SELF LOCKING NUT 5/8" UNF | 6 |
| 05 | 00756581 | INTERMEDIATE DRIVE SHAFT | 1 |
| 06 | 1048057 | MAIN PTO SHAFT | 1 |
| 07 | 00757375A | SHAFT ASSEMBLY – WING | 2 |



| REF | PART NO | DESCRIPTION | QTY |
|---------|---------------------------|--------------------------------|-----|
| 1048506 | HYDRAULIC RAMS & FITTINGS | | |
| 01 | 8727A | RAM – LIFT | 1 |
| 01 | 00774760 | SEAL KIT | 0 |
| 02 | 8728A | RAM – WING | 2 |
| 02 | 00774760 | SEAL KIT | 0 |
| 03 | 45200.01 | BRACKET-UPPER SPRING | 1 |
| 03 | 0212527 | BOLT 3/4" UNC X 6.1/2" | 4 |
| 03 | 05.296.07 | SELF-LOCKING NUT 3/4"UNC PLATE | 4 |
| 03 | 05.281.05 | FLAT WASHER 20MM PLATED | 4 |
| 04 | 45200.02 | BRACKET-LOWER SPRING | 1 |
| 05 | 371063A | SPRING | 4 |
| 06 | 45246.01 | SPRING GUIDE | 4 |
| 07 | 45201.01 | TRANSPORTER BAR | 2 |
| 09 | 45214.01 | PIN-BASE END LIFT RAM | 2 |
| 09 | 05.284.14 | SPLIT COTTER 5MM X 40MM | 2 |
| 10 | 45217.01 | PIN-ROD LIFT RAM | 1 |
| 10 | 05.284.14 | SPLIT COTTER 5MM X 40MM | 1 |
| 11 | 45163.01 | PIN-WING RAM | 4 |
| 11 | 05.284.14 | SPLIT COTTER 5MM X 40MM | 6 |
| 11 | 05.964.01 | SPRING COTTER 3.6MM DIA | 2 |
| 12 | 00755234 | CONTROL SPACER KIT | 1 |

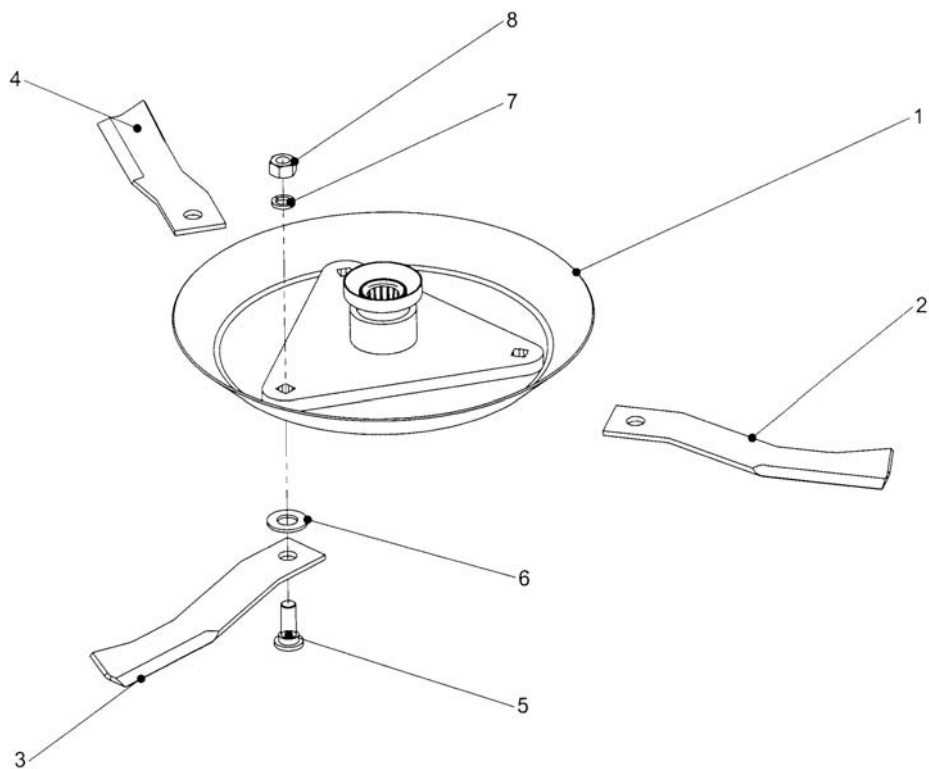


| REF | PART NO | DESCRIPTION | QTY |
|-----------|------------------------------|--------------------------------|-----|
| 77.500.16 | HYDRAULIC FITTINGS AND HOSES | | |
| 01 | 00762114 | BREATHER | 3 |
| 02 | 8124064 | RESTRICTOR 1/2" BSP X 3/8" BSP | 2 |
| 03 | 10.003.62 | HOSE 3/8" BSP FS/FS X 5200 | 2 |
| 04 | 10.004.26 | HOSE 3/8" BSP FS/F90 X 1600 | 1 |
| 05 | 8581170 | 3/8" BSP CONED / 3/4" JIC | 3 |
| 06 | 8590074 | 1'2" BSP QUICK RELEASE | 2 |
| 07 | 8600908 | O RING 3/4"UNF | 6 |
| 08 | 8650104 | 1/2" BSP BONDED SEAL PP45D | 2 |
| 09 | 04.056.05 | ADAPTOR TEE 3/8" BSP M/M/M | 1 |
| 10 | 10.004.22 | HOSE 3/8" BSP ST X 90 1200 | 1 |
| 11 | T5386 | DUST CAP FEMALE | 2 |
| 12 | 04.282.66 | STUD M10 X 56 | 3 |
| 12 | 05.281.02 | FLAT WASHER 10MM | 3 |
| 12 | 05.287.02 | SELF LOCKING NUT M10 | 3 |
| 12 | 06.418.06 | CLAMP PLATE | 3 |
| 12 | 06.430.07 | CLAMP – HOSE | 6 |



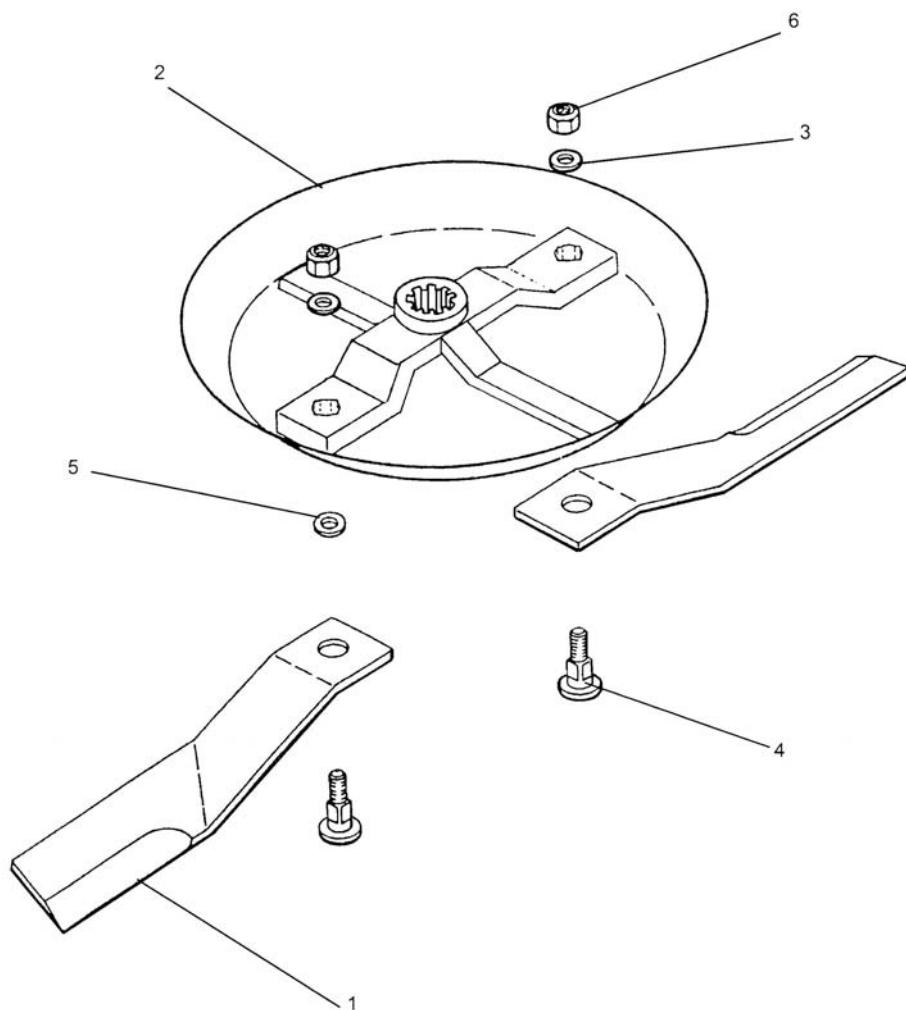
| REF | PART NO | DESCRIPTION | QTY |
|-----------|-----------|---------------------------|-----|
| 77.500.11 | | WHEELS, HUBS AND AXLES | |
| 01 | 46992.08 | CENTRE AXLE | 1 |
| 01 | 0212609 | BOLT 1" UNC X 7 1/2" | 2 |
| 01 | 05.296.08 | SELF LOCKING NUT 1" UNC | 2 |
| 02 | 46992.07 | L.H. WING AXLE | 1 |
| 02 | 0212569 | BOLT 1" UNC X 7" | 1 |
| 02 | 05.255.40 | BOLT 1" UNC X 5" | 1 |
| 02 | 05.296.08 | SELF LOCKING NUT 1" UNC | 2 |
| 03 | 46992.06 | R.H. WING AXLE | 1 |
| 03 | 0212569 | BOLT 1" UNC X 7" | 1 |
| 03 | 05.255.40 | BOLT 1" UNC X 5" | 1 |
| 03 | 05.296.08 | SELF LOCKING NUT 1" UNC | 2 |
| 04 | 46992.22 | TWIN STUB AXLE ASSEMBLY | 2 |
| 04 | 05.292.45 | BOLT M20 X 120 MM | 8 |
| 04 | 05.287.05 | SELF LOCKING NUT M20 | 8 |
| 05 | 46992.23 | SINGLE STUB AXLE ASSEMBLY | 2 |
| 05 | 05.292.45 | BOLT M20 X 120 MM | 8 |
| 05 | 05.287.05 | SELF LOCKING NUT M20 | 8 |
| 06 | 1048038AP | WHEEL AND TYRE ASSEMBLY | 6 |
| 07 | 00763449 | CONTROL ROD ASSEMBLY | 2 |
| 07 | 05.255.38 | BOLT 3/4" UNC X 4 1/2" | 4 |
| 08 | 45184.01 | SPACER TUBE | 4 |
| 09 | 1048010 | SPACER | 4 |
| 10 | 45410.02 | CHOCK L.H. <i>N/I</i> | 1 |
| 10 | 05.964.01 | SPRING COTTER | 1 |
| 11 | 45410.01 | CHOCK R.H. <i>N/I</i> | 1 |
| 11 | 05.964.01 | SPRING COTTER | 1 |

N/I = NOT ILLUSTRATED

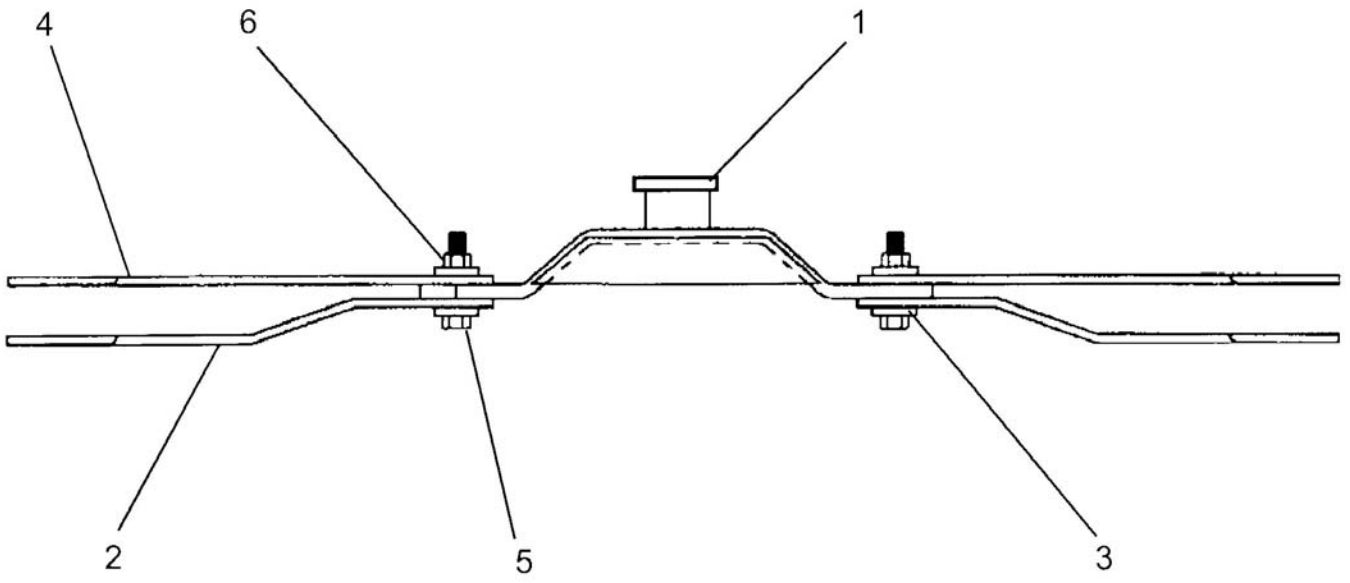


3 BLADE ASSY

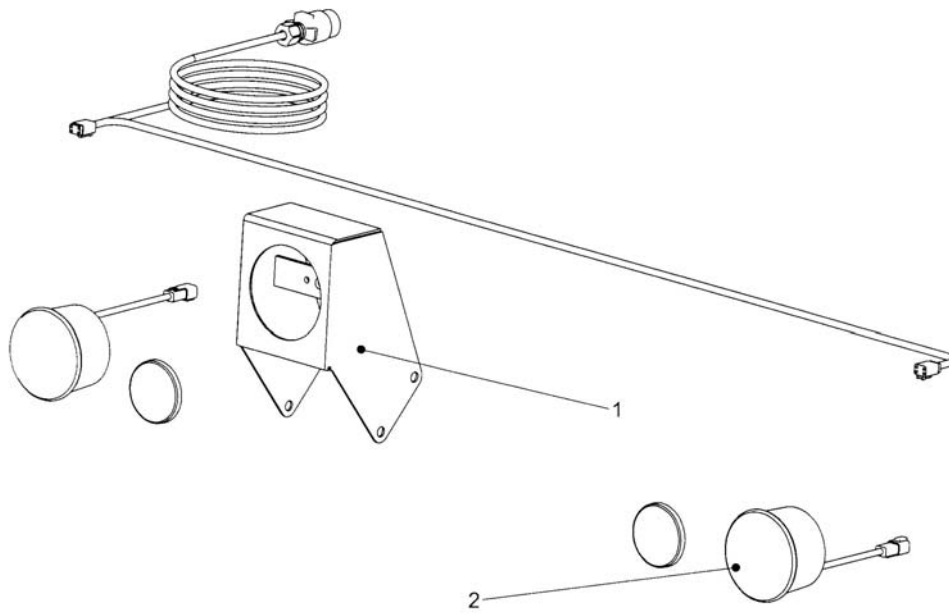
2 BLADE ASSY



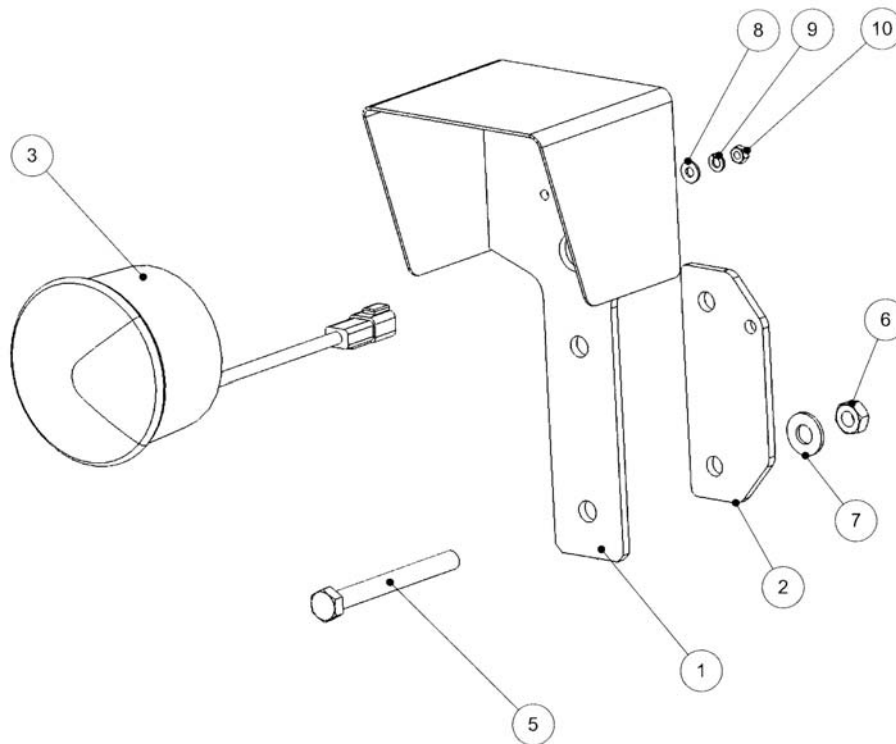
| REF | PART NO | DESCRIPTION | QTY |
|-----------|------------------------|------------------------|-----|
| 77.500.22 | 3 BLADE PAN AND BLADES | | |
| 01 | 46992.25 | 3 BLADED PAN ASSEMBLY | 3 |
| 02 | 00764663P | BLADE C/W | 1 |
| 03 | 00764664P | BLADE AC/W | 1 |
| 04 | 00764668P | BLADE AC/W | 1 |
| 05 | 571044 | BOLT | 9 |
| 06 | 571045 | WASHER – SHOLDER BOLT | 9 |
| 07 | 0656150200 | WASHER | 9 |
| 08 | 5GL16140 | LOCKNUT | 9 |
| 1048509 | 2 BLADE PAN AND BLADES | | |
| 01 | 00764663P | BLADE C/W – WING LH | 2 |
| 01 | 00764664P | BLADE AC/W – WING RH | 2 |
| 01 | 00764668P | BLADE AC/W - CENTRE. | 2 |
| 02 | 00771591P | 2 BLADE PAN | 3 |
| 03 | 0656150200 | WASHER | 6 |
| 04 | 571044 | BOLT | 6 |
| 05 | 571045 | WASHER - SHOULDER BOLT | 6 |
| 06 | 5GL16140 | LOCK NUT | 6 |



| REF | PART NO | DESCRIPTION | QTY |
|---------|------------|-------------------------|-----|
| 1048265 | | SHREDDER BLADE ASSEMBLY | |
| 01 | 00771594 | BLADE BAR | 3 |
| 02 | 8588 | BLADES PAIR CENTRE | 2 |
| 02 | 8589 | BLADES PAIR WING LH | 2 |
| 02 | 8590 | BLADES PAIR WING RH | 2 |
| 03 | 00763253 | BLADE BUSHING | 12 |
| 04 | 8279 | TOP BLADE (WING) | 4 |
| 04 | 8280 | TOP BLADE (CENTRE) | 2 |
| 05 | 7AH8141436 | BOLT | 6 |
| 06 | 00750226 | LOCKNUT | 6 |

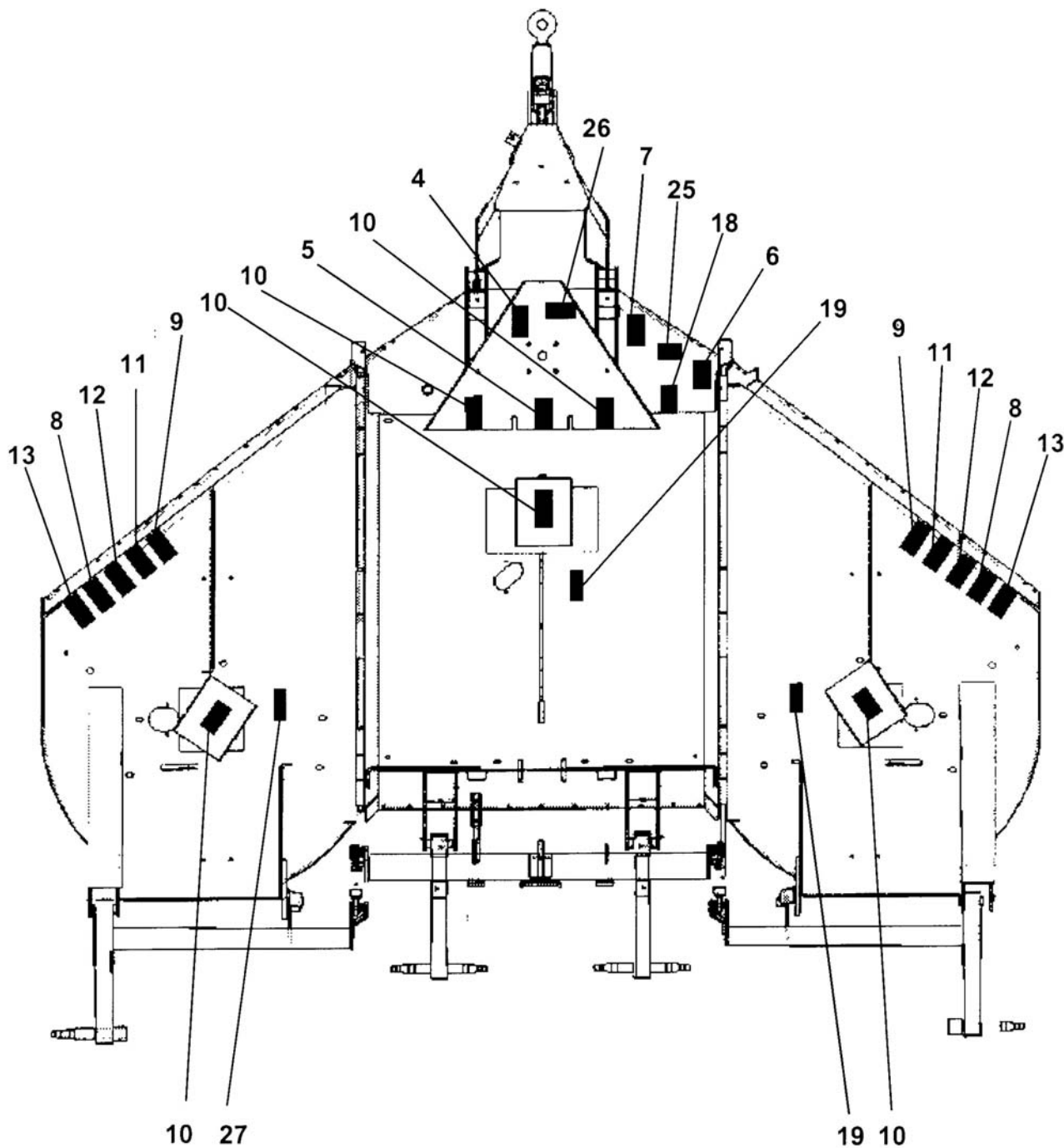


UP TO FEBRUARY 2006



FROM MARCH 2006

| REF | PART NO | DESCRIPTION | QTY |
|-----------|--|------------------------|-----|
| 77.500.15 | LIGHT BRACKET AND LIGHT KIT (<i>UP TO FEBRUARY 2006</i>) | | |
| 01 | 46948.09 | LIGHT MOUNTING BRACKET | 2 |
| 01 | 05.291.12 | BOLT M10 X 35 MM | 8 |
| 02 | 45662.10 | LIGHT KIT | 1 |
| 77.500.15 | LIGHT BRACKET AND LIGHT KIT (<i>FROM MARCH 2006</i>) | | |
| 01 | 47454.01 | LIGHT BRACKET | 2 |
| 02 | 46454.02 | CLAMP PLATE | 2 |
| 02 | 45326.01 | LIGHT UNIT | 2 |
| 04 | 45646.01 | WIRING LOOM | 1 |
| 05 | 05.292.25 | BOLT M12 | 4 |
| 06 | 05.287.03 | SELF LOCKING NUT M12 | 4 |
| 07 | 05.281.03 | FLAT WASHER 12MM | 4 |
| 08 | 05.281.10 | FLAT WASHER 6MM | 4 |
| 09 | 05.282.07 | SPRING WASHER 6MM | 4 |
| 10 | 05.286.10 | NUT M6 | 4 |



| REF | PART NO | DESCRIPTION | QTY |
|---------|-----------|--------------------------------|-----|
| 1048514 | DECAL KIT | | |
| 01 | 09.810.01 | DECAL-GREASE (8 HOURS) | 4 |
| 02 | 09.810.02 | DECAL-GREASE (40 HOURS) | 4 |
| 03 | 09.810.05 | DECAL - OIL LEVEL | 3 |
| 04 | 09.811.05 | DECAL - MAX PTO SPEED 1000 ACW | 1 |
| 05 | 09.821.07 | DECAL - RESIDUAL PRESSURE | 1 |
| 06 | 09.821.10 | DECAL - KEEP NUTS TIGHT | 1 |
| 07 | 09.821.01 | DECAL - READ INSTRUCTION BOOK | 1 |
| 08 | 09.821.18 | DECAL - THROWN DEBRIS | 2 |
| 09 | 09.821.19 | DECAL - ROTARY HEAD DANGER | 2 |
| 10 | 09.821.20 | DECAL - SHAFT ENTANGLEMENT | 5 |
| 11 | 09.821.21 | DECAL - FALLING WING | 2 |
| 12 | 09.821.22 | DECAL - UNBLOCK HEAD(ROTARY) | 2 |
| 13 | 09.821.25 | DECAL - RAISED WING DANGER | 2 |
| 14 | 09.843.07 | DECAL - LIFT POINT 2000 KG | 4 |
| 18 | 00763613 | DECAL - SLIP CLUTCH ADJUSTMENT | 1 |
| 19 | D137 | DECAL - BLADE CCW ROTATION | 2 |
| 25 | 05.227.01 | HAMMER DRIVE SCREW NO.6X3/8" | 2 |
| 25 | 05.774.07 | SERIAL NO. PLATE BOMFORDTURNER | 1 |
| 26 | D102 | DECAL - PTO 5FT TO HI | 1 |
| 27 | D138 | DECAL - BLADE CW ROTATION | 1 |
| 28 | 7560093 | ADHESIVE REFLECTOR | 4 |
| 29 | 21175.01 | DECAL - SET SLIP CLUTCH | 1 |
| 30 | 21175.02 | DECAL - CLUTCH SETTING | 1 |
| 31 | 45645.01 | DECAL - BOMFORD 72MM | 3 |
| 32 | 45645.02 | DECAL - BOMFORD 50MM | 2 |
| 33 | 47153.01 | DECAL - TRI WING 4600 | 2 |