

PM 6002

SILA-BED

STRAW/SILAGE SPREADER

PARTS MANUAL

ISSUE 1

IMPORTANT

NOTE HERE THE SERIAL NUMBER OF YOUR MACHINE AND ALWAYS QUOTE IT IN ANY COMMUNICATION WITH US OR YOUR DEALER. THIS IS PARTICULARLY IMPORTANT WHEN ORDERING SPARES. REMEMBER TO INCLUDE ALL NUMBERS AND LETTERS.

MACHINE SERIAL NUMBERS _____

THE INFORMATION GIVEN THROUGHOUT THIS MANUAL IS CORRECT AT THE TIME OF PUBLICATION. HOWEVER, IN THE COURSE OF CONSTANT DEVELOPMENT OF BOMFORD TURNER MACHINES, CHANGES IN SPECIFICATION ARE INEVITABLE. SHOULD YOU FIND THE INFORMATION GIVEN IN THIS BOOK TO BE AT VARIANCE WITH THE MACHINE IN YOUR POSSESSION, YOU ARE ADVISED TO CONTACT THE BOMFORD TURNER SERVICE DEPARTMENT WHERE UP-TO-DATE INFORMATION WILL BE PROVIDED.

THE MANUAL CAN CONTAIN STANDARD AND OPTIONAL FEATURES AND IS NOT TO BE USED AS A MACHINE SPECIFICATION.

THE MACHINE HAS BEEN TESTED AND IS CONSIDERED SAFE IF CAREFULLY USED. ENSURE YOUR OPERATOR IS PROPERLY TRAINED IN ITS USE AND MAINTENANCE.

IMPORTANT

NOTEZ ICI LES NUMEROS DE SERIE DE VOTRE MACHINE ET MENTIONNEZ LES DANS TOUTE COMMUNICATION AVEC NOS SERVICES OU VOTRE REVENDEUR. CECI EST IMPORTANT POUR LA COMMANDE DE PIECES DETACHEES. PENSEZ A NOTER TOUS LES NUMEROS ET TOUTES LES LETTERS.

NUMEROS DE SERIE DE LA MACHINE _____

LES INFORMATIONS DONNEES DANS CE MANUEL SONT CORRECTES CEPENDANT, DU FAIT DE DEVELOPPEMENT CONSTANT DES MACHINES BOMFORD TURNER.

CHANGEMENTS DANS LES CARACTERISTIQUES SONT INEVITABLES.

SI VOUS TROUVEZ QUE LES INFORMATIONS DONNEES NE CORRESPONDENT PAS A VOTRE MACHINE VEUILLEZ CONTACTER LE SERVICE DES REPARATIONS OU DES INFORMATIONS PLUS RECENTES VOUS SERONT DONNEES.

CE MANUEL PEUT MONTRER DES CARACTERISTIQUES OPTIONNELLES ET NE PEUT PAS ETRE CONSIDERE COMME SPECIFICATION DE LA MACHINE.

CETTE MACHINE A ETE TESTEE, ET ELLE EST CONSIDEREE COMME FIABLE A CONDITION D'UNE BONNE UTILISATION. ASSUREZ-VOUS QUE VOTRE OPERATEUR EST QUALIFIE EN CE QUI CONCERNE L'UTILISATION DE LA MACHINE AINSI QUE SON ENTRETIEN.

WICHTIG

TRAGEN SIE HIER DIE SERIENNUMMERN IHRER MASCHINE EIN UND GEBEN SIE DIESE IMMER AN, WENN SIE SICH AN UNS ODER IHREN HÄNDLER WENDEN. DAS IST BESONDERS BEI ERSATZTEILBESTELLUNGEN WICHTIG. VERGESSEN SIE NICHT, ALLE ZAHLEN UND BUCHSTABEN ZU NOTIEREN.

SERIENNUMMERN DER MASCHINE _____

DIE ANGABEN IN DIESEM HANDBUCH SIND BEI VERÖFFENTLICHUNG KORREKT. AUFGRUND DER KONSTANTEN WEITERENTWICKLUNG VON BOMFORD TURNER MASCHINEN SIND JEDOCHÄNDERUGDEN IN DER SPEZIFIKATION UNVERMEIDLICH. WENN DIE INFORMATION IN DIESEM HANDBUCH NICHT MIT IHRER MASCHINE ÜBEREINSTIMMEN, NEHMEN SIE BITTE KONTAKT MIT DER BOMFORD TURNER KUNDENDIENSTABTEILUNG AUF, DIE IHNEN GERNE DIE AKTUELLEN INFORMATION ZUKOMMEN LÄSST.

DAS HANDBUCH KANN SOWOHL BESCHREIBUNGEN FÜR DIE STANDARD AUSFÜHRUNG ALS AUCH FÜR ZUBEHÖR ENTHALTEN UND IST NICHT ALS MASCHINENSPEZIFIKATION ZU VERWENDET.

DIE MASCHINE IST GETESTET UND BEI SACHGEMÄSSEM BETRIEB ALS SICHER BEFUNDEN WORDEN. SORGEN SIE DAFÜR, DASS IHR BEDIENPERSONAL IN ANWENDUNG UND WARTUNG RICHTIG GESCHULT WIRD.

SILA-BED STRAW/SILAGE SPREADER

PAGE ILLUSTRATION NUMBERS SHOWN ARE USED ONLY FOR REFERENCE PURPOSES AND SHOULD NOT BE USED FOR ORDERING SPARE PARTS. PLEASE ENSURE THE CORRECT PART NUMBER AND DESCRIPTION IS GIVEN WHEN ORDERING SPARE PARTS.

SECTION NO	DESCRIPTION
2	CHASSIS ASSEMBLY
3	BODY - TOP ASSEMBLY
4	FLOOR ASSEMBLY
5	HOUSING ASSEMBLY FAN
6	FAN UNIT ASSEMBLY
7	AXLE ASSEMBLY
8	RAM ASSEMBLY – CHUTE
9	RAM ASSEMBLY – TAILGATE
10	UPPER HOUSING ASSEMBLY
11	TAILGATE ASSEMBLY
12	CONTROL VALVE ASSEMBLY
13	SHAFT ASSEMBLY
14	GEARBOX/PTO ASSEMBLY
15	MOTOR – BED
16	CONTROLS ASSEMBLY
17	HOSE LAYOUT
18	DECALS
19	ROAD LIGHTING KIT

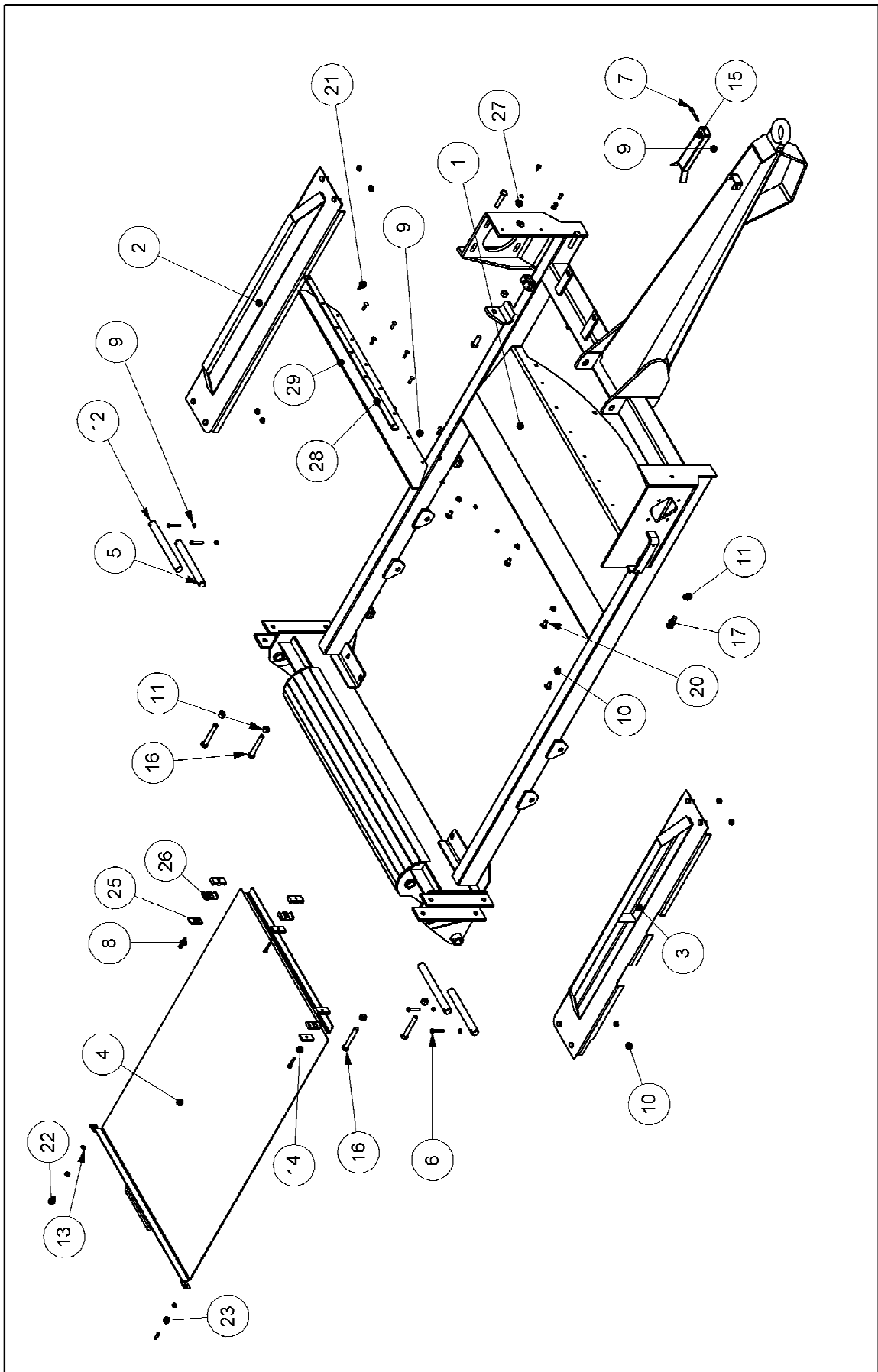
IMPORTANT

THIS MACHINE IS FOR VEGETATION CONTROL AND MUST NOT BE USED FOR ANY OTHER PURPOSE

IT IS POTENTIALLY HAZARDOUS TO FIT OR USE ANY PARTS OTHER THAN GENUINE BOMFORD TURNER PARTS

THE COMPANY DISCLAIMS ALL LIABILITY FOR THE CONSEQUENCES OF SUCH USE WHICH, IN ADDITION, VOIDS THE MACHINE WARRANTY

CHASSIS ASSEMBLY
77.482.01 REV: A

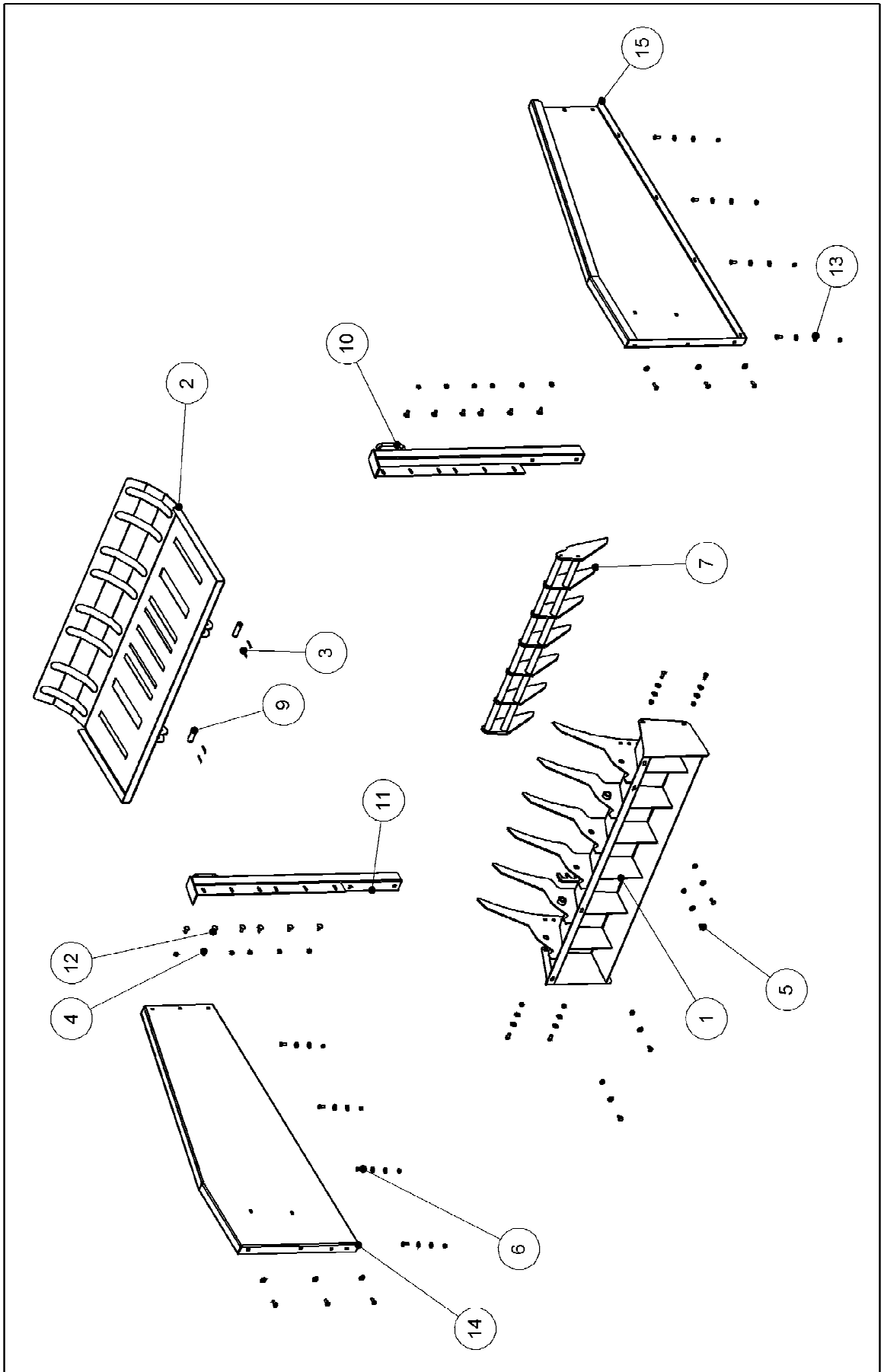


CHASSIS ASSEMBLY

77.482.01 REV : A

ITEM NO.	PART NUMBER	DESCRIPTION	QTY.
1	47758.01	CHASSIS	1
2	47801.01	PANEL SIDE LH	1
3	47801.02	PANEL SIDE RH	1
4	47803.01	PANEL MIDDLE	1
5	03.654.99	PIN 30 DIA X 254	2
6	05.291.06	BOLT M8x55	4
7	05.291.09	BOLT M8x70	1
8	05.291.04	BOLT M8x45	7
9	05.287.01	SELF-LOCKING NUT M8	12
10	05.287.03	SELF-LOCKING NUT M12	12
11	05.287.04	SELF-LOCKING NUT M16	6
12	03.654.95	PIN 30 DIA X 278	2
13	05.282.02	SPRING WASHER M10	2
14	05.282.01	SPRING WASHER M8	9
15	47757.01	PTO REST	1
16	05.292.34	BOLT M16x110	4
17	05.264.36	SETSCREW M16x45	2
18	05.264.40	SETSCREW M16x70	2
19	05.264.01	SETSCREW M8x20	2
20	05.839.27	BOLT CUP SQR M12X25	4
21	9293064	BOLT CUP SQR M8X30	7
22	04.282.68	STUD M10 X33	2
23	05.286.02	NUT M10	2
24	05.286.04	NUT M16	4
25	06.418.03	CLAMP PLATE 60x30	7
26	06.430.04	CLAMP - HOSE	14
27	05.281.01	FLAT WASHER M8	2
28	48042.01	STRAP	1
29	48041.01	GUARD - FLEXIBLE	1

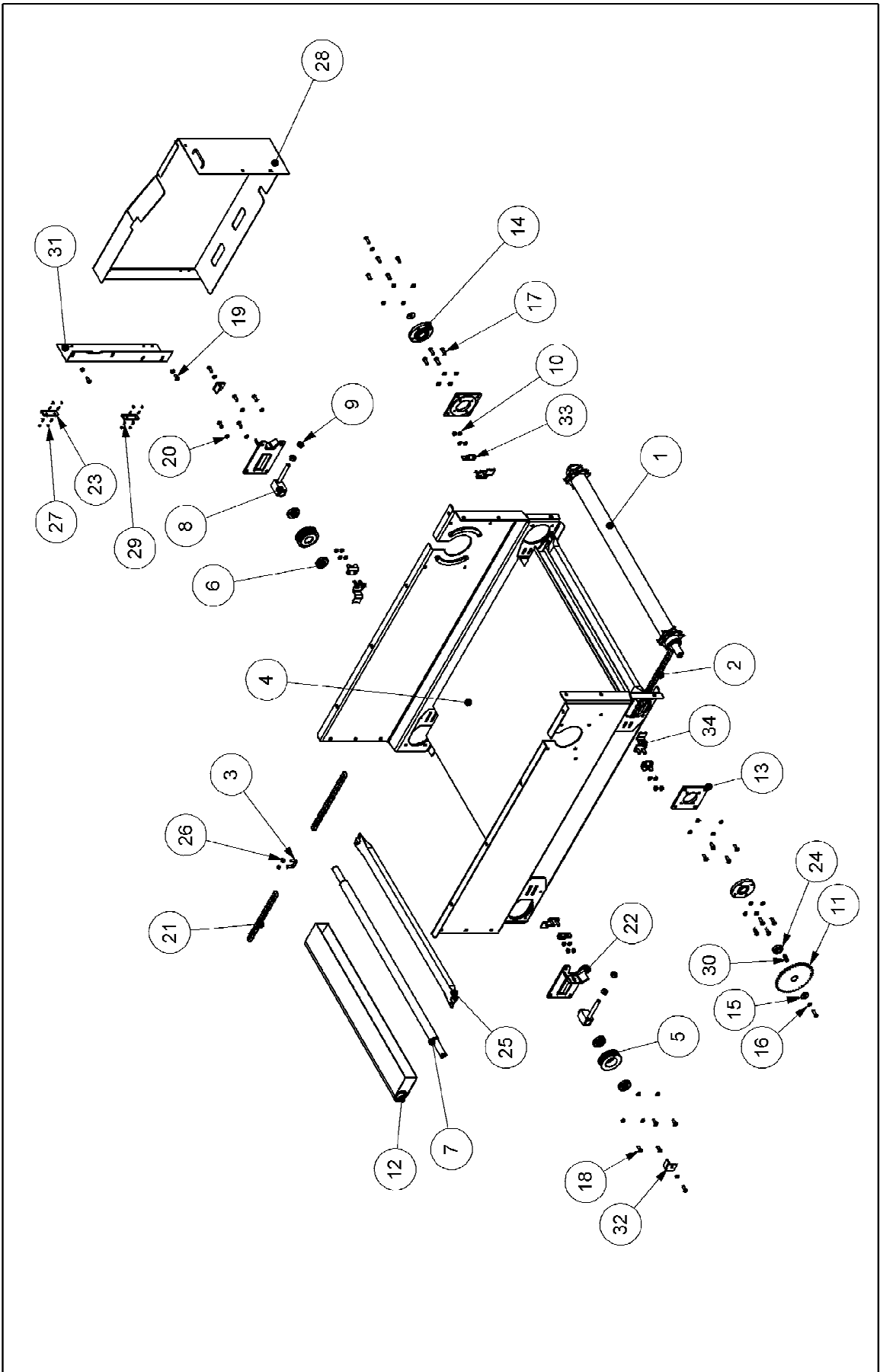
BODY - TOP
77.504.01 REV: A



BODY - TOP
77.504.01 REV : A**BODY - TOP - 77.504.01**

ITEM NO.	PART NUMBER	DESCRIPTION	QTY.
1	47876.01	BALE RESTRICTER	1
2	47886.01	COVER - TOP	1
3	05.201.11	TENSION PIN Ø5x45	4
4	05.287.03	SELF-LOCKING NUT M12	34
5	05.264.21	SETSCREW M12x20	4
6	05.264.22	SETSCREW M12x25	22
7	48007.01	RESTRICTER - BALE	1
8	05.282.03	SPRING WASHER M12	4
9	03.653.80	PIN 25 DIA X 84	2
10	48004.01	POST - SUPPORT LH	1
11	48004.02	POST - SUPPORT RH	1
12	05.839.27	BOLT CUP SQR M12X25	12
13	05.281.03	FLAT WASHER M12	40
14	48005.02	PANEL - SIDE RH	1
15	48005.01	PANEL - SIDE LH	1

FLOOR ASSEMBLY
77.488.02 REV: A



FLOOR ASSEMBLY

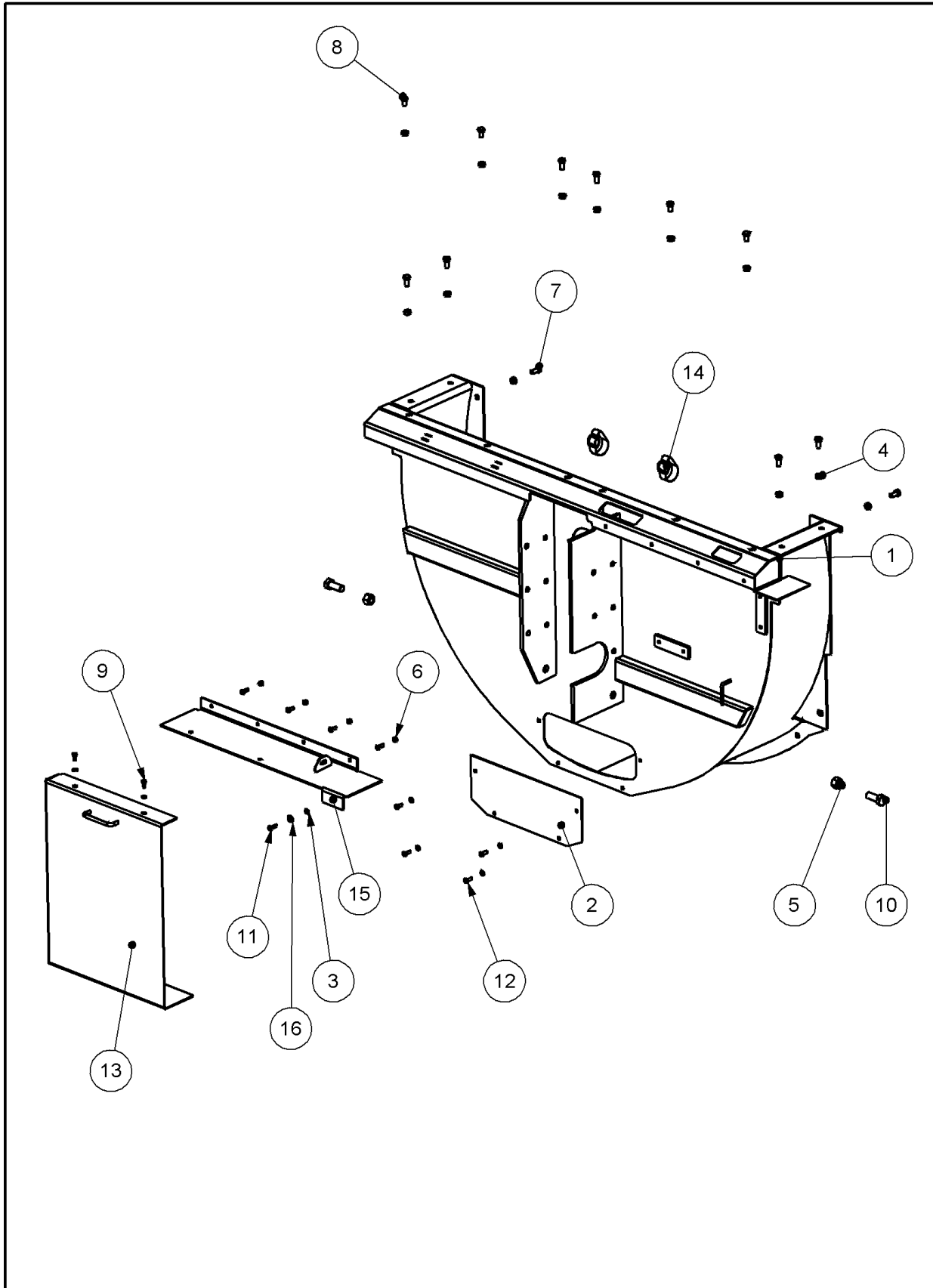
77.488.02 REV : A

FLOOR ASSEMBLY - 77.488.02

ITEM NO.	PART NUMBER	DESCRIPTION	QTY.
1	47779.01	SHAFT - FRONT DRIVE	1
2	47720.01	CHAIN - 13 LINKS	8
3	47789.02	U BOLT 12 DIA	16
4	47791.01	FLOOR	1
5	47780.01	WHEEL - CHAIN	2
6	03.007.10	BEARING BALL 35DIA	4
7	47814.01	SHAFT - REAR	1
8	47815.01	ADJUSTING SCREW	2
9	05.286.05	NUT M20	4
10	05.286.03	NUT M12	8
11	47784.02	SPROCKET - 38 TOOTH	1
12	47817.01	FLOOR - REAR	1
13	47881.01	PLATE - BEARING	2
14	06.221.01	BEARING ASSY 40 BORE	2
15	05.234.01	WASHER 44.5x13x5 PLATED	2
16	05.283.03	SHAKEPROOF WASHER 12MM	2
17	05.264.24	SETSCREW M12x35	10
18	05.264.23	SETSCREW M12x30	18
19	05.264.22	SETSCREW M12x25	2
20	05.282.03	SPRING WASHER M12	34
21	47720.02	CHAIN - 11 LINKS	8
22	47813.01	BRACKET - ADJUSTER	2
23	46065.01	HINGE	2
24	47845.01	SPACER	1
25	47777.01	SLAT	8
26	05.287.03	SELF-LOCKING NUT M12	34
27	30.070.64	SELF-LOCKING NUT M6	8
28	47924.02	GUARD - DRIVE	1
29	05.345.14	SOCKET CSK SCREW M6x16	8
30	05.960.13	KEY - S/REP 14X9X45	1
31	47944.01	DRIVE GUARD PLATE	1
32	47991.01		2
33	47996.05	CLAMP	4
34	47999.01	SCRAPER	4

HOUSING ASSEMBLY FAN

77.490.01 REV : A



HOUSING ASSEMBLY FAN

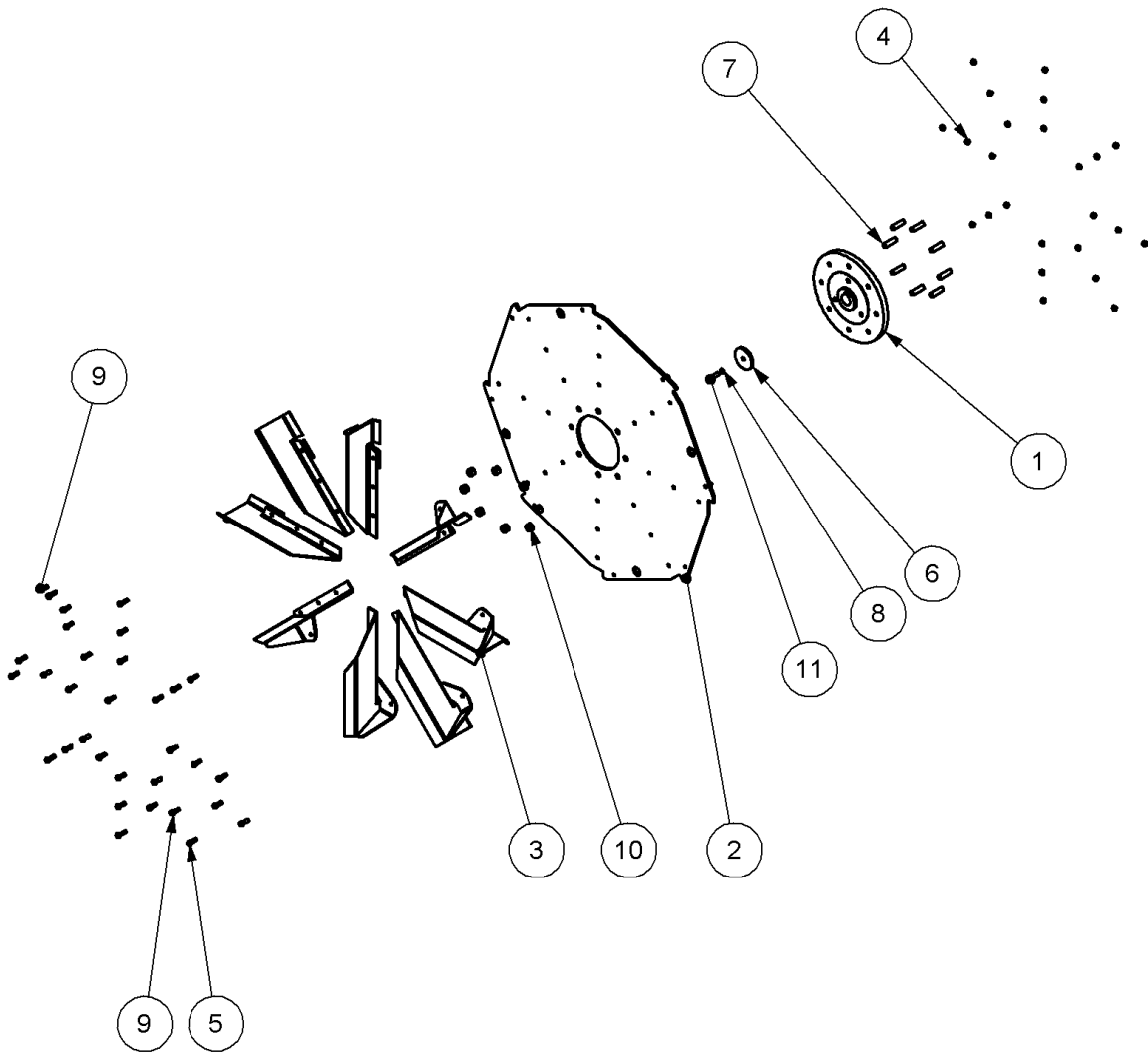
77.490.01 REV : A

HOUSING ASSEMBLY FAN - 77.490.01

ITEM NO.	PART NUMBER	DESCRIPTION	QTY.
1	47786.01	FAN HOUSING	1
2	47846.01	PANEL - FRONT	1
3	05.282.01	SPRING WASHER M8	7
4	05.287.03	SELF-LOCKING NUT M12	14
5	05.287.05	SELF-LOCKING NUT M20	2
6	05.287.01	SELF-LOCKING NUT M8	4
7	05.264.22	SETSCREW M12x25	10
8	05.264.21	SETSCREW M12x20	4
9	05.839.03	SETSCREW M8X16	2
10	05.264.47	SETSCREW M20x50	2
11	05.264.02	SETSCREW M8x25	1
12	05.264.01	SETSCREW M8x20	8
13	47923.01	GUARD - FRONT	1
14	7106187	STRAP - HOSE	2
15	48020.01	PLATE - GUARD MOUNTING	1
16	05.281.01	FLAT WASHER M8	1
17	03.231.09	EDGING STRIP-DIPSTK EDGE X 400	1
18	03.231.14	RUBBER EDGING 280MM	1

FAN UNIT ASSEMBLY

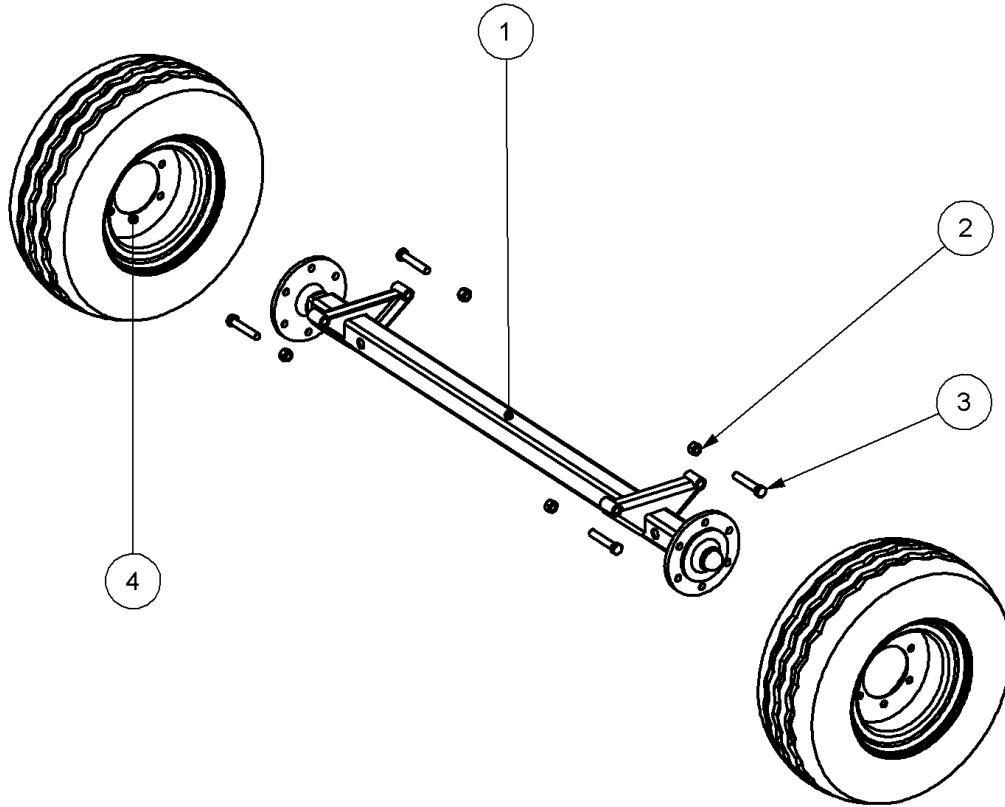
77.484.01 REV : A



ITEM NO.	PART NUMBER	DESCRIPTION	QTY.
1	47768.01	MOUNTING BOSS - FAN	1
2	47769.01	PLATE - FAN	1
3	47778.01	BLADE - FAN	8
4	05.287.03	SELF-LOCKING NUT M12	32
5	05.264.25	SETSCREW M12x40	8
6	47805.01	WASHER 100 DIA	1
7	04.282.93	STUD M20 X 68	8
8	05.283.07	SHAKEPROOF WASHER 14MM	1
9	05.264.24	SETSCREW M12x35	24
10	05.968.05	SELF-LOCKING NUT M20	8
11	05.839.42	SETSCREW M14 X 50	1

AXLE ASSEMBLY

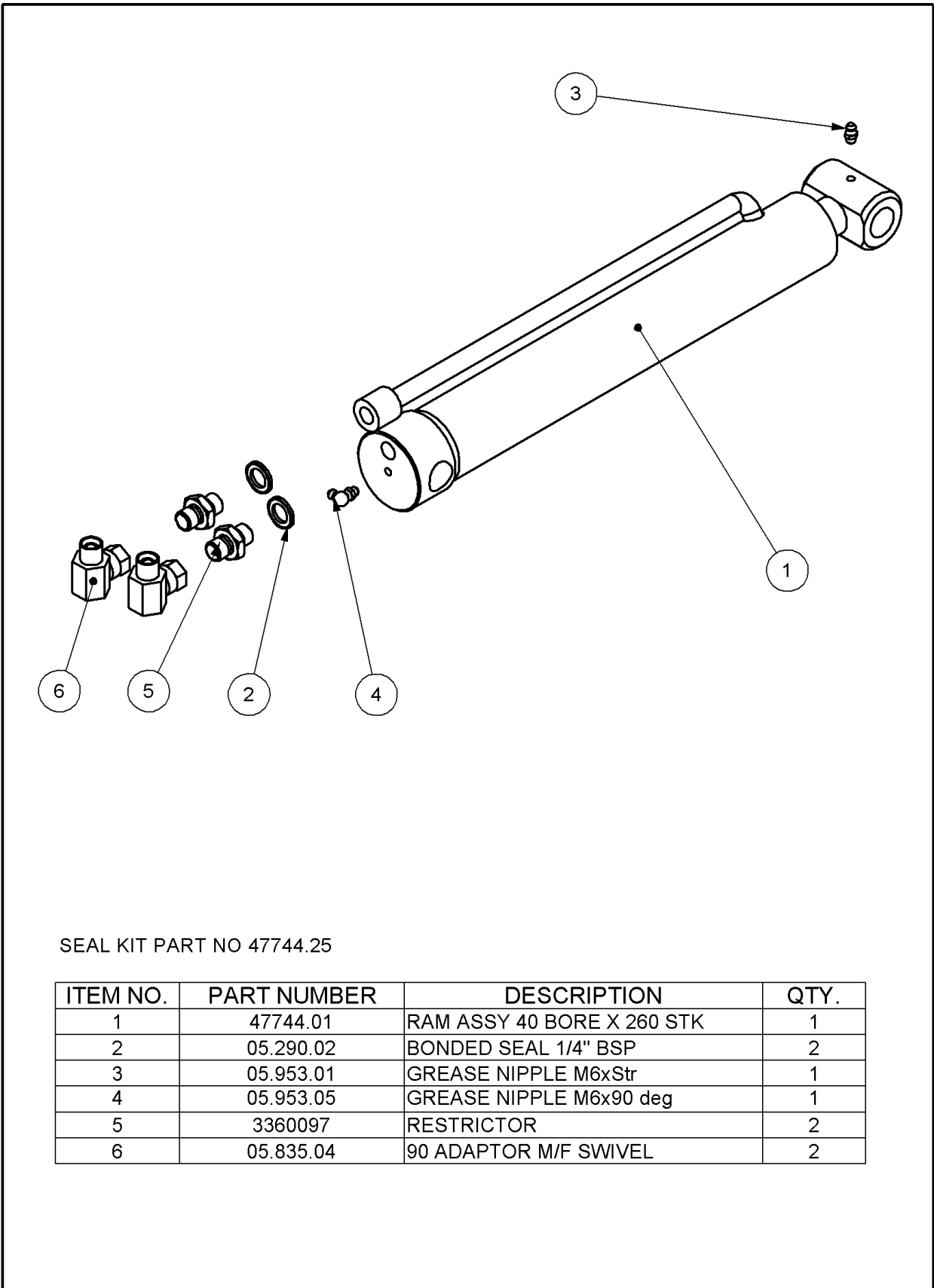
77.481.01 REV : A



ITEM NO.	PART NUMBER	DESCRIPTION	QTY.
1	47716.01	AXLE	1
2	05.287.05	SELF-LOCKING NUT M20	4
3	05.292.44	BOLT M20x110	4
4	T5718	WHEEL & TYRE 10/75 x 15.5 6 STUD	2

RAM ASSEMBLY - CHUTE

77.476.01 REV : A

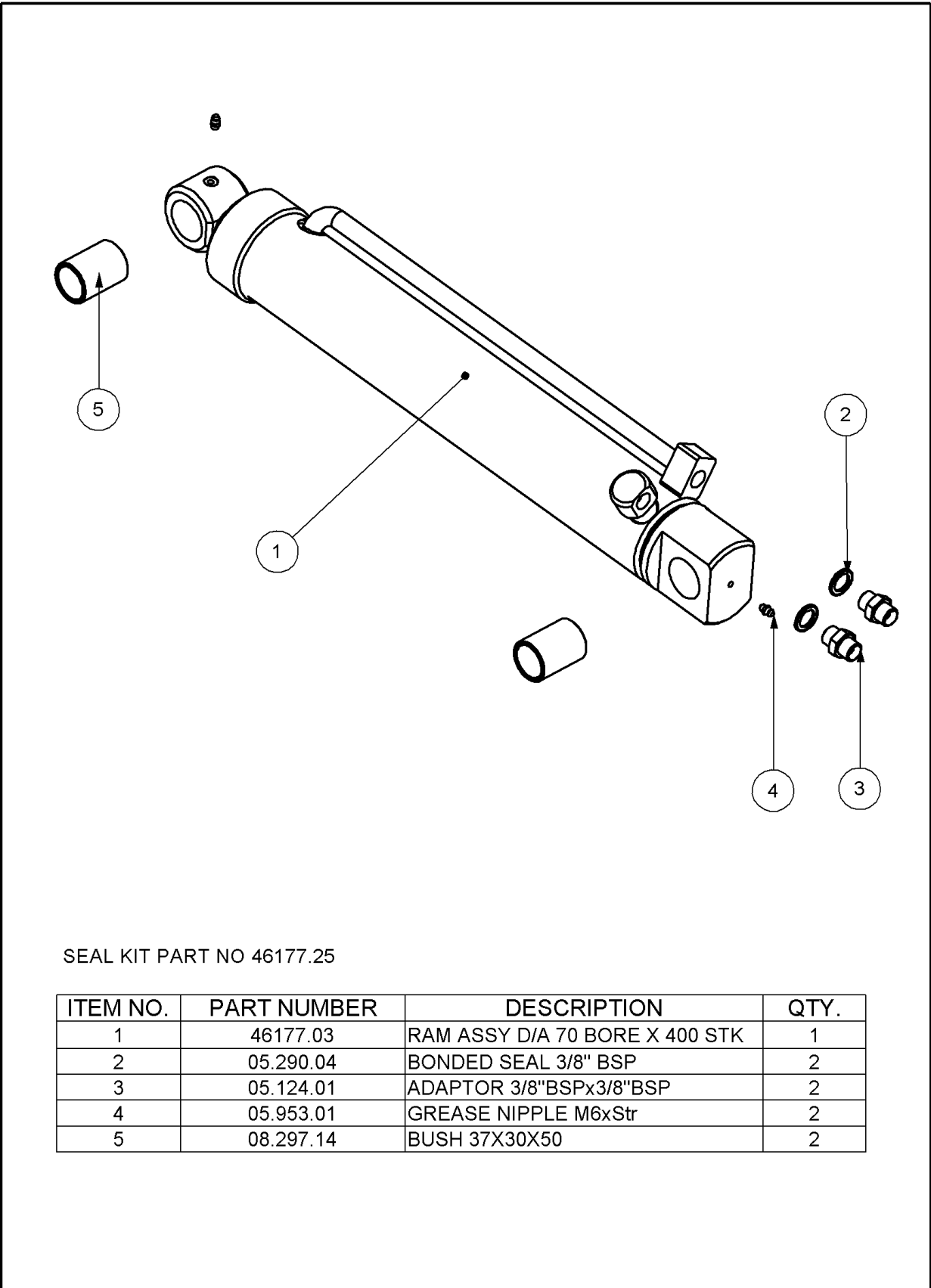


SEAL KIT PART NO 47744.25

ITEM NO.	PART NUMBER	DESCRIPTION	QTY.
1	47744.01	RAM ASSY 40 BORE X 260 STK	1
2	05.290.02	BONDED SEAL 1/4" BSP	2
3	05.953.01	GREASE NIPPLE M6xStr	1
4	05.953.05	GREASE NIPPLE M6x90 deg	1
5	3360097	RESTRICTOR	2
6	05.835.04	90 ADAPTOR M/F SWIVEL	2

RAM ASSEMBLY - TAILGATE

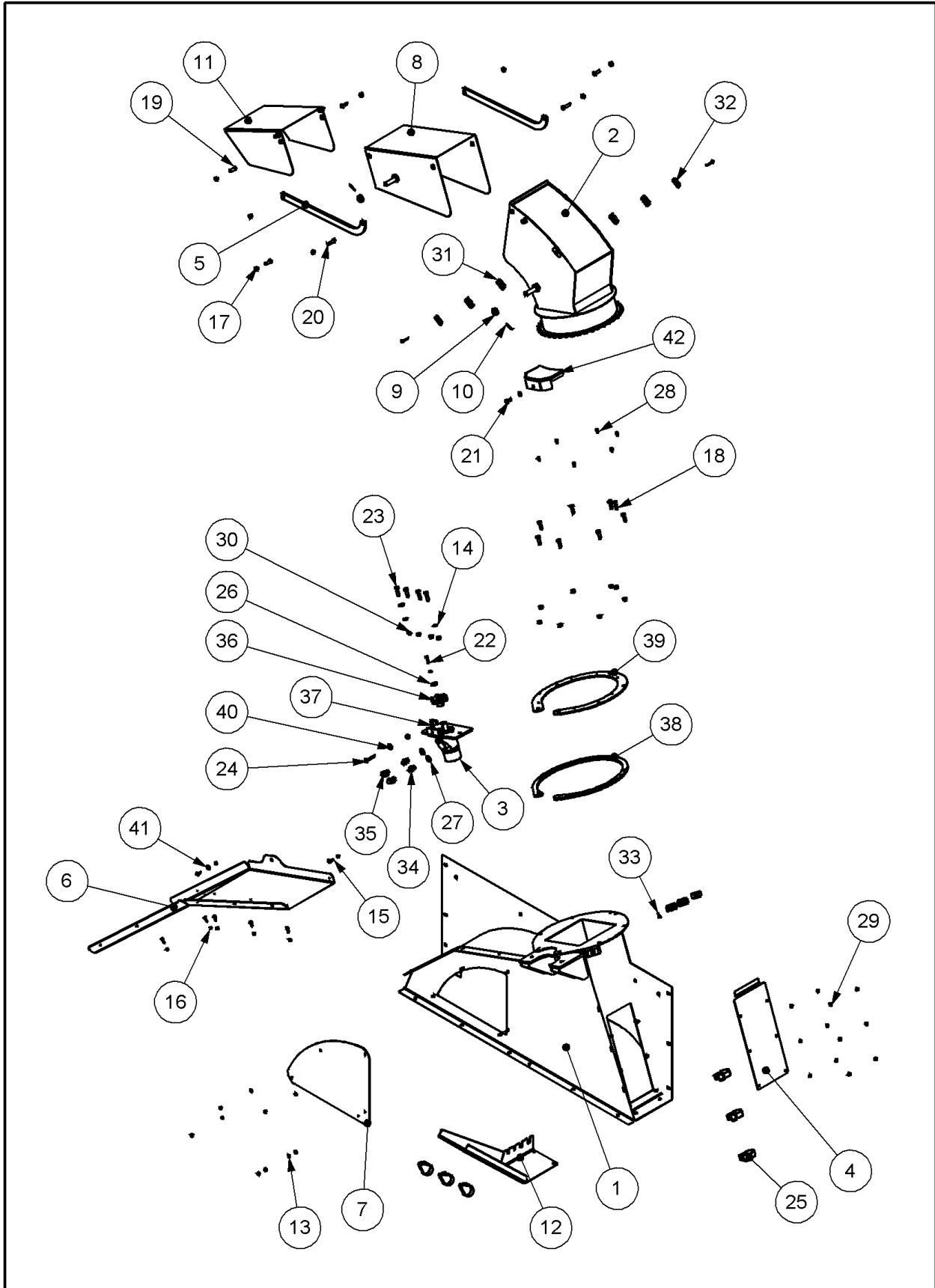
77.478.01 REV : A



SEAL KIT PART NO 46177.25

ITEM NO.	PART NUMBER	DESCRIPTION	QTY.
1	46177.03	RAM ASSY D/A 70 BORE X 400 STK	1
2	05.290.04	BONDED SEAL 3/8" BSP	2
3	05.124.01	ADAPTOR 3/8"BSPx3/8"BSP	2
4	05.953.01	GREASE NIPPLE M6xStr	2
5	08.297.14	BUSH 37X30X50	2

UPPER HOUSING
77.492.01 REV : A



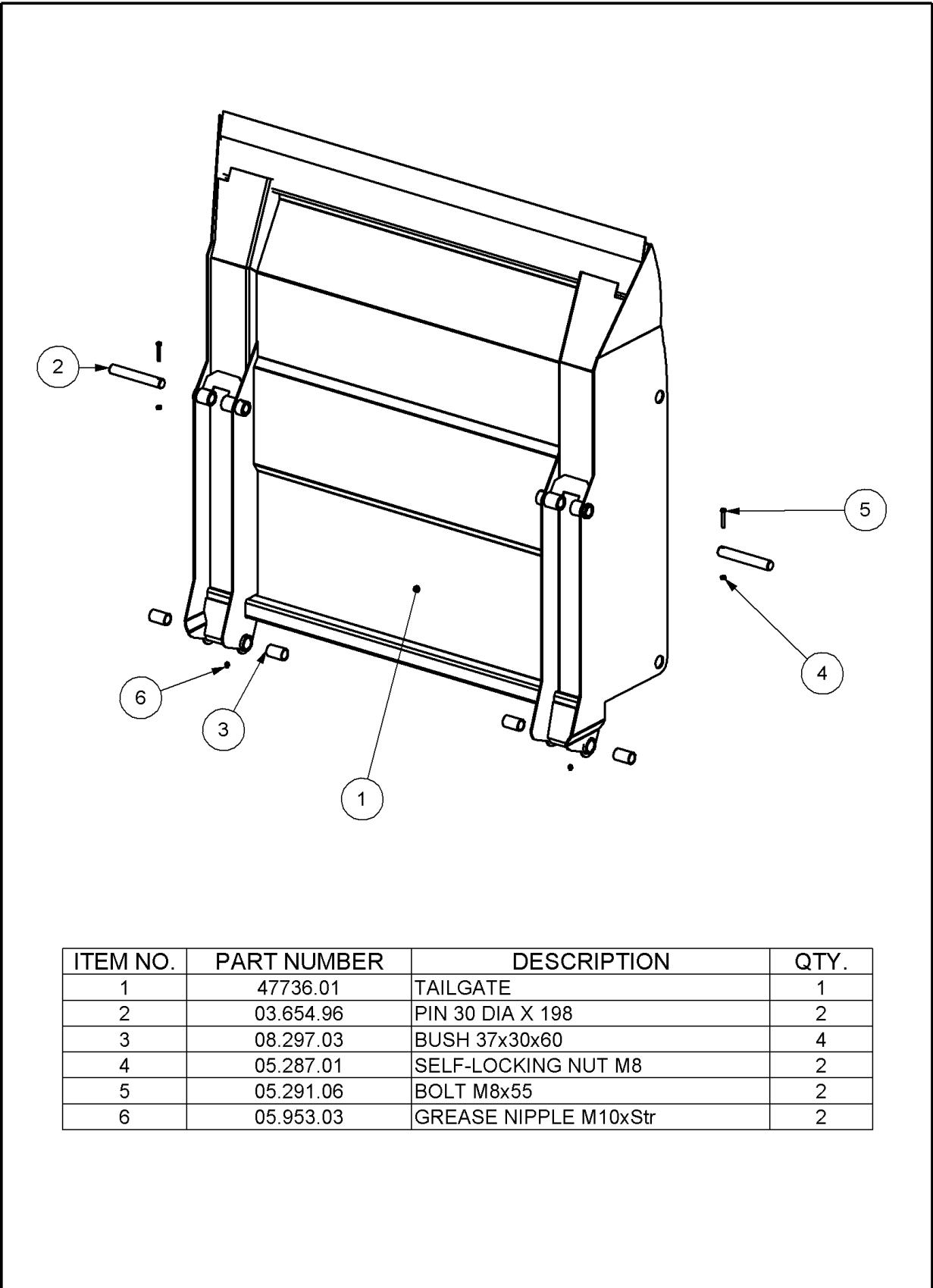
UPPER HOUSING

77.492.01 REV : A

ITEM NO.	PART NUMBER	DESCRIPTION	QTY.
1	47808.01	UPPER HOUSING	1
2	47839.01	UPPER CHUTE	1
3	47838.01	MOTOR	1
4	47847.01	GUARD SIDE	1
5	47866.02	LINK	2
6	47867.01	PLATE DISCHARGE	1
7	47869.01	GUARD PLATE	1
8	47862.01	CHUTE CENTRE SECTION	1
9	47927.01	COLLAR	2
10	05.201.11	TENSION PIN Ø5x45	2
11	47864.01	CHUTE END SECTION	1
12	47931.01	HOSE CARRIER	1
13	05.282.01	SPRING WASHER M8	12
14	05.282.03	SPRING WASHER M12	3
15	9293054	BOLT CUP SQR M8x25	7
16	05.287.01	SELF-LOCKING NUT M8	7
17	05.287.03	SELF-LOCKING NUT M12	18
18	05.264.24	SETSCREW M12x35	8
19	05.264.23	SETSCREW M12x30	4
20	05.264.26	SETSCREW M12x45	2
21	05.264.21	SETSCREW M12x20	1
22	05.264.03	SETSCREW M8x30	1
23	05.264.25	SETSCREW M12x40	4
24	05.264.27	SETSCREW M12x55	1
25	7106187	STRAP - HOSE	6
26	05.234.02	PLAIN WASHER - 30 x 9 x 5	1
27	05.290.05	BONDED SEAL 1/2" BSP	2
28	05.953.04	GREASE NIPPLE M10x90 deg	6
29	05.286.01	NUT M8	11
30	05.286.03	NUT M12	3
31	5351.2	CLAMP JAW 2 X 1/4	6
32	5351.1	TOP PLATE	3
33	05.291.03	BOLT M8x40	3
34	46518.37	RESTRICTOR	2
35	05.835.01	90 ADAPTOR M/F SWIVEL	2
36	47841.02	GEAR - MOTOR	1
37	48053.01	PLATE - MOTOR MTG	1
38	47835.02	PLATE - SPACER	2
39	47834.02	PLATE - CLAMP	2
40	05.281.03	FLAT WASHER M12	2
41	05.281.01	FLAT WASHER M8	1
42	47915.02	GUARD - MOTOR CHUTE	1

TAILGATE ASSEMBLY

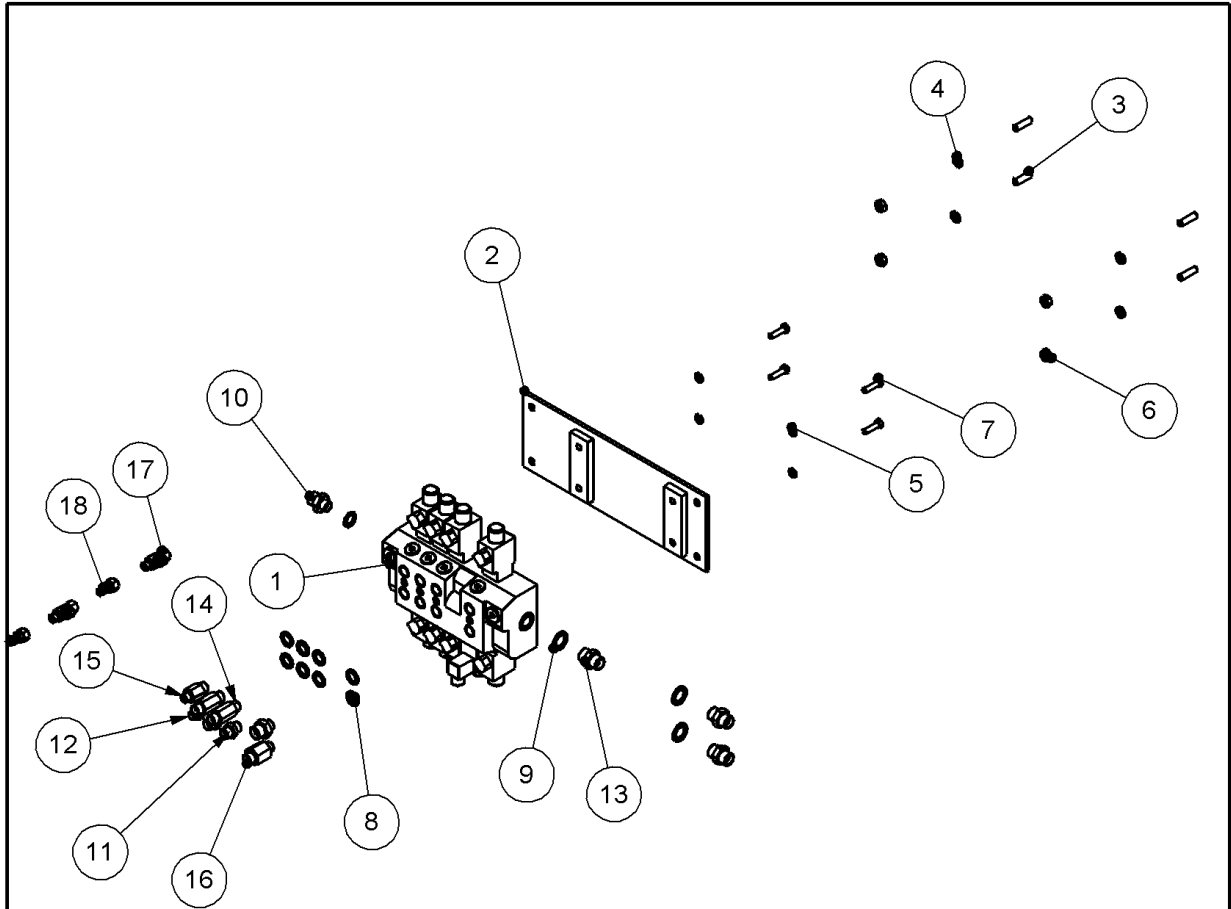
77.487.01 REV : A



ITEM NO.	PART NUMBER	DESCRIPTION	QTY.
1	47736.01	TAILGATE	1
2	03.654.96	PIN 30 DIA X 198	2
3	08.297.03	BUSH 37x30x60	4
4	05.287.01	SELF-LOCKING NUT M8	2
5	05.291.06	BOLT M8x55	2
6	05.953.03	GREASE NIPPLE M10xStr	2

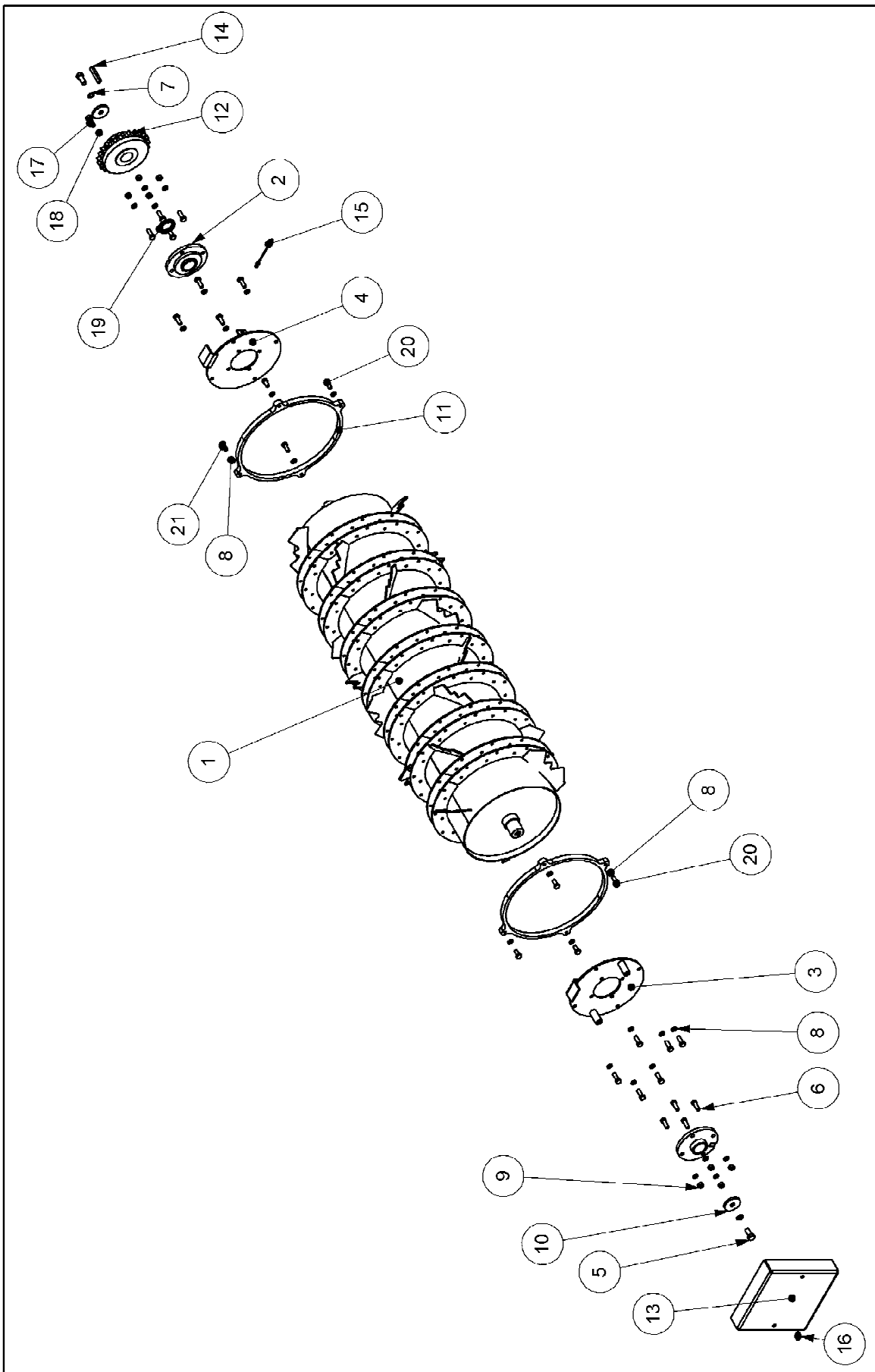
CONTROL VALVE ASSEMBLY

77.496.01 REV : A



ITEM NO.	PART NUMBER	DESCRIPTION	QTY.
1	47827.02.	VALVE SD6 4 SERVICE	1
2	47854.03	BRACKET - VALVE MOUNTING	1
3	03.100.01	STUD M10x34	4
4	05.282.02	SPRING WASHER M10	4
5	05.282.01	SPRING WASHER M8	4
6	05.286.02	NUT M10	4
7	05.264.03	SETSCREW M8x30	4
8	05.290.04	BONDED SEAL 3/8" BSP	9
9	05.290.05	BONDED SEAL 1/2" BSP	3
10	05.123.01	ADAPTOR 3/8"BSPx1/2"BSP	2
11	05.124.01	ADAPTOR 3/8"BSPx3/8"BSP	2
12	01.099.01	ADAPTOR 1/4"BSPx3/8"BSP	1
13	05.122.01	ADAPTOR 1/2"BSPx1/2"BSP	3
14	05.819.01	ADAPTOR 3/8"BSPx3/8"BSP	2
15	05.819.02	ADAPTOR 1/4"BSPx3/8"BSP	1
16	03.077.01	ADAPTOR 1/2"BSPx3/8"BSP	1
17	04.056.05	ADAPTOR TEE 3/8"BSP M/M/M	2
18	05.146.01	Q/R COUPLING 1/2" BSP MALE	2
19	T5386	DUST CAP.(FEMALE)	2

SHAFT ASSEMBLY
77.483.01 REV: A



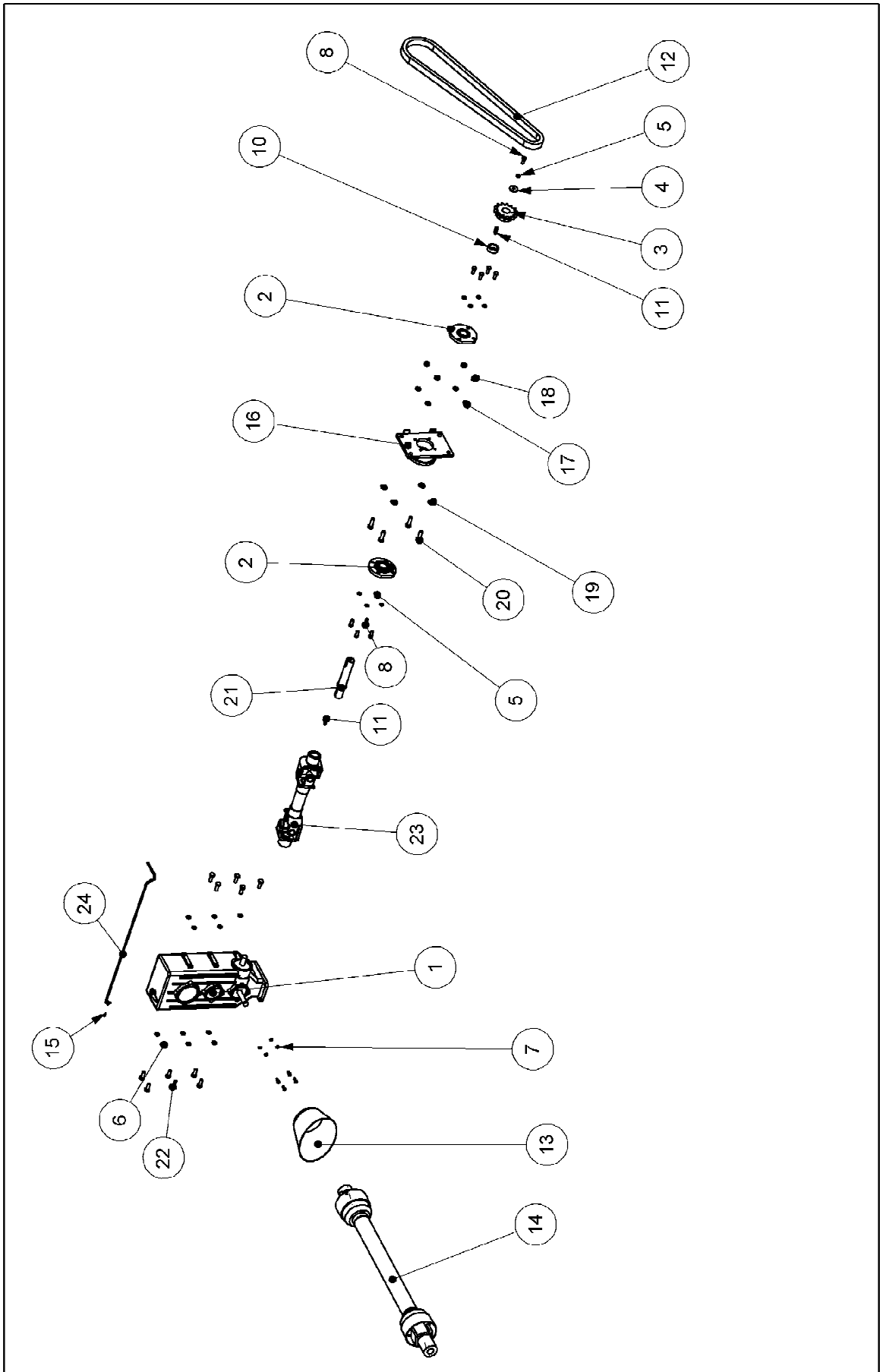
SHAFT ASSEMBLY

77.483.01 REV : A

SHAFT ASSEMBLY - 77.483.01

ITEM NO.	PART NUMBER	DESCRIPTION	QTY.
1	47749.20	SHAFT - ASSEMBLY BLADES	1
2	43545.01	BEARING ASSY 50 BORE FC50	2
3	47799.02	PLATE - BEARING NON-DRIVE	1
4	47799.01	PLATE - BEARING DRIVE	1
5	05.264.34	SETSCREW M16x35	2
6	05.264.24	SETSCREW M12x35	18
7	05.283.04	SHAKEPROOF WASHER 16MM	2
8	05.282.03	SPRING WASHER M12	26
9	05.286.03	NUT M12	8
10	04.252.01	WASHER 65 x 17 x 8	2
11	47804.02	SHEILD - ROTOR	4
12	47831.01	SPROCKET SHEAR PIN ASSY	1
13	47884.01	GUARD - NON DRIVE	1
14	05.960.32	KEY-S/REP 14X9X75	1
15	45677.01	GREASING ASSY. FK HEAD D/END	1
16	03.816.01	PLUG RUBBER 25mm DIA.	1
17	05.839.11	BOLT M8 X 50 (10.9)	5
18	05.287.01	SELF-LOCKING NUT M8	5
19	47845.04	SPACER	1
20	05.264.22	SETSCREW M12x25	6
21	05.264.23	SETSCREW M12x30	2

GEARBOX/PTO
77.486.01 REV: A

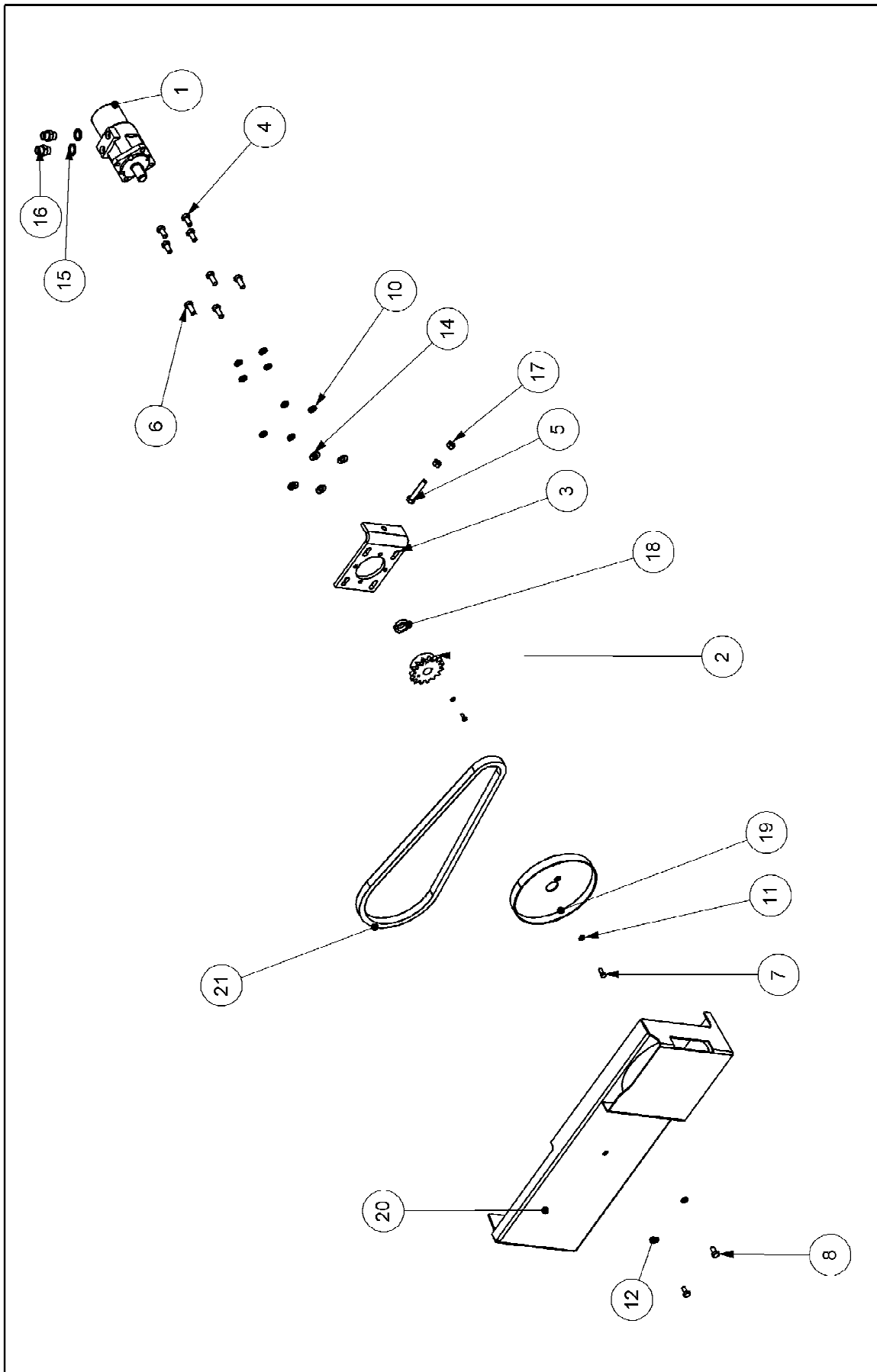


GEARBOX/PTO

77.486.01 REV : A

ITEM NO.	PART NUMBER	DESCRIPTION	QTY.
1	47678.01	GEARBOX - COMER TWO SPEED	1
2	47785.01	SPROCKET - 14 TOOTH	1
3	05.234.01	WASHER 44.5x13x5 PLATED	1
4	05.282.03	SPRING WASHER M12	9
5	05.282.08	SPRING WASHER M14	11
6	05.282.01	SPRING WASHER M8	4
7	05.282.04	SPRING WASHER M16	4
8	05.264.23	SETSCREW M12x30	9
9	05.264.01	SETSCREW M8x20	4
10	05.264.37	SETSCREW M16x50	4
11	47845.02	SPACER	1
12	05.960.16	KEY-S/REP 12X8X40	2
13	47798.01	CHAIN	1
14	47141.02	GUARD - PTO	1
15	47718.01	PTO SHAFTT60	1
16	05.201.05	TENSION PIN Ø3x20	1
17	47979.01	BRACKET - BEARING	1
18	06.221.01	BEARING ASSY 40 BORE	2
19	05.286.04	NUT M16	4
20	05.281.04	FLAT WASHER M16	4
21	47797.02	SHAFT - DRIVE	1
22	05.839.01	BOLT M14 X 2.0P X 35 LG	11
23	47436.03	SHAFT - DRIVE	1
24	47701.01	HANDLE - GEARBOX	1

HYD MOTOR BED
77.501.01 REV: A



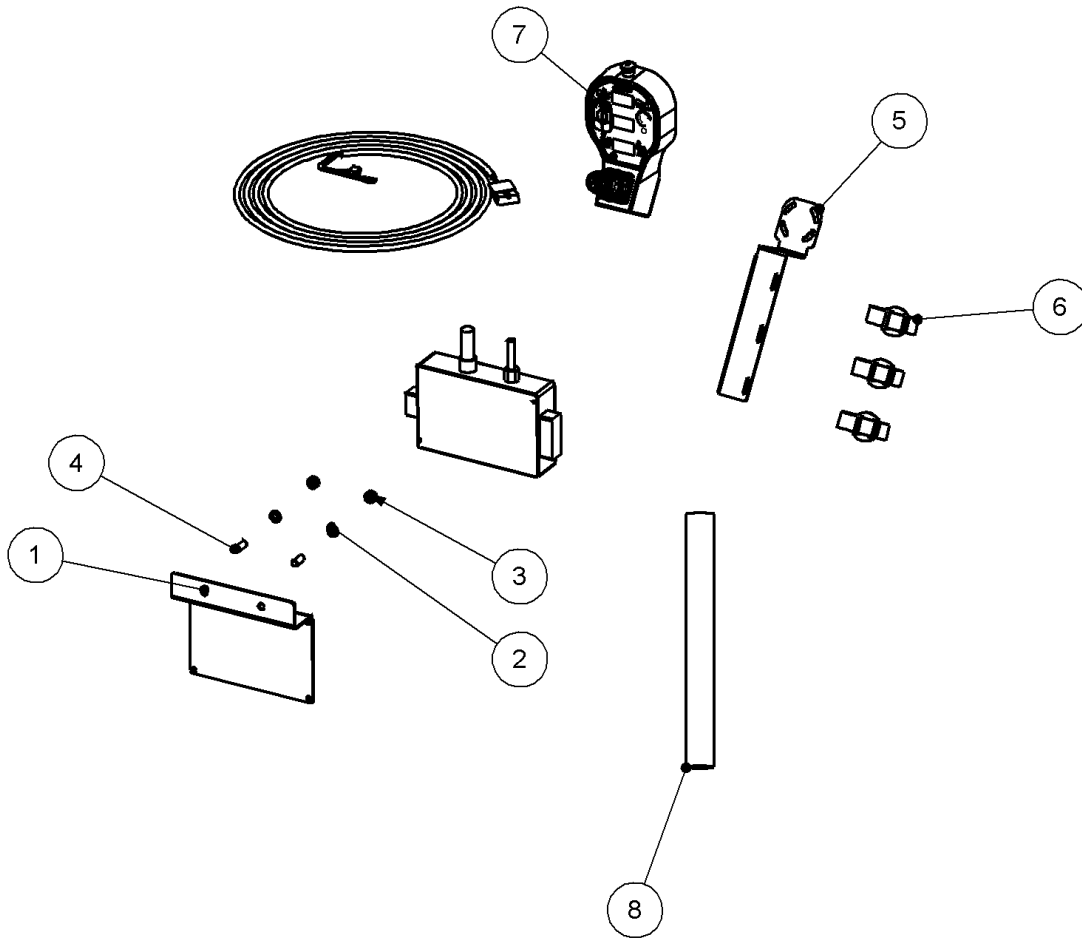
HYD MOTOR BED

77.501.01 REV : A

HYD MOTOR BED - 77.501.01

ITEM NO.	PART NUMBER	DESCRIPTION	QTY.
1	47844.01	MOTOR HYD FLOOR	1
2	47784.01	SPROCKET - 15 TOOTH	1
3	47853.01	PLATE - MOTOR MTG	1
4	05.264.22	SETSCREW M12x25	4
5	05.264.30	SETSCREW M12x70	1
6	05.264.23	SETSCREW M12x30	4
7	05.264.01	SETSCREW M8x20	1
8	05.264.11	SETSCREW M10x20	2
9	05.839.05	SETSCREW M6 X 16	1
10	05.282.03	SPRING WASHER M12	8
11	05.282.01	SPRING WASHER M8	1
12	05.282.02	SPRING WASHER M10	2
13	05.282.07	SPRING WASHER M6	1
14	05.281.03	FLAT WASHER M12	4
15	05.290.05	BONDED SEAL 1/2" BSP	2
16	05.122.01	ADAPTOR 1/2"BSPx1/2"BSP	2
17	05.286.03	NUT M12	2
18	47845.03	SPACER	1
19	47935.01	INDICATOR - SPEED	1
20	47910.01	GUARD - DRIVE	1
21	47843.02	CHAIN 12B-1 - 76 PITCHES	1

CONTROL ASSY
77.502.01 REV : A



PART 48000.01 CONTROL ASSEMBLY COMPLETE CONSISTS OF ALL AT QTY 1:-

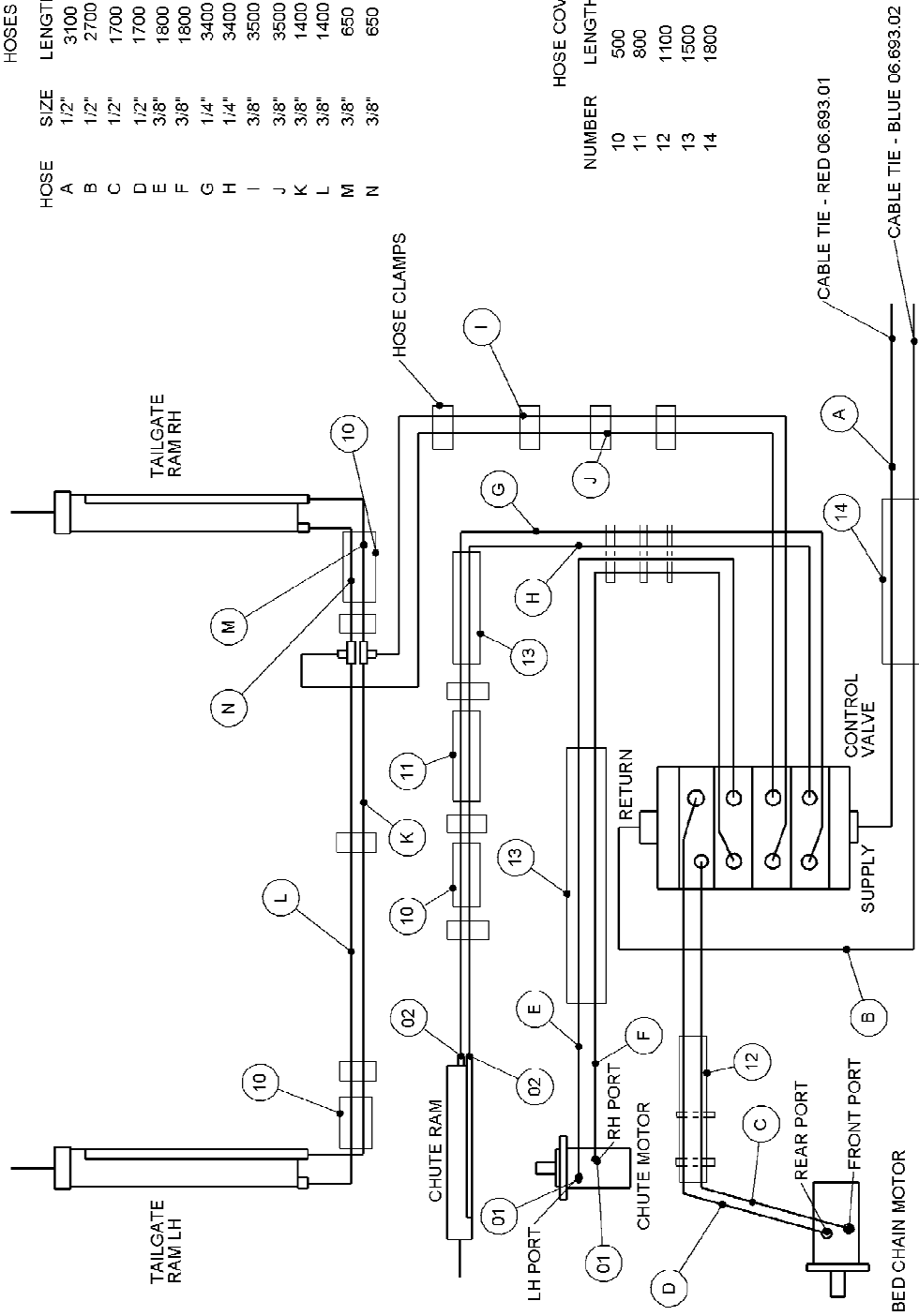
- 46796.02 12V POWER LOOM
- 48000.31 ARMREST
- 48000.32 ECU BOX
- 48000.33 CAN LOOM
- 48000.34 LOOM SOLENOID

ITEM NO.	PART NUMBER	DESCRIPTION	QTY.
1	47855.01	CONTROL BOX MOUNTING PLATE	1
2	05.282.02	SPRING WASHER M10	2
3	05.286.02	NUT M10	2
4	04.282.88	STUD M10 X 23	2
5	47503.02	PLATE - CONTROL MOUNTING	1
6	7106187	STRAP - HOSE	3
7	48000.01	CONTROL ASSEMBLY COMPLETE	1
8	43543.08	HOSE SLEEVE 170 X 1800	1

HOSE SERV KIT 77.498.01

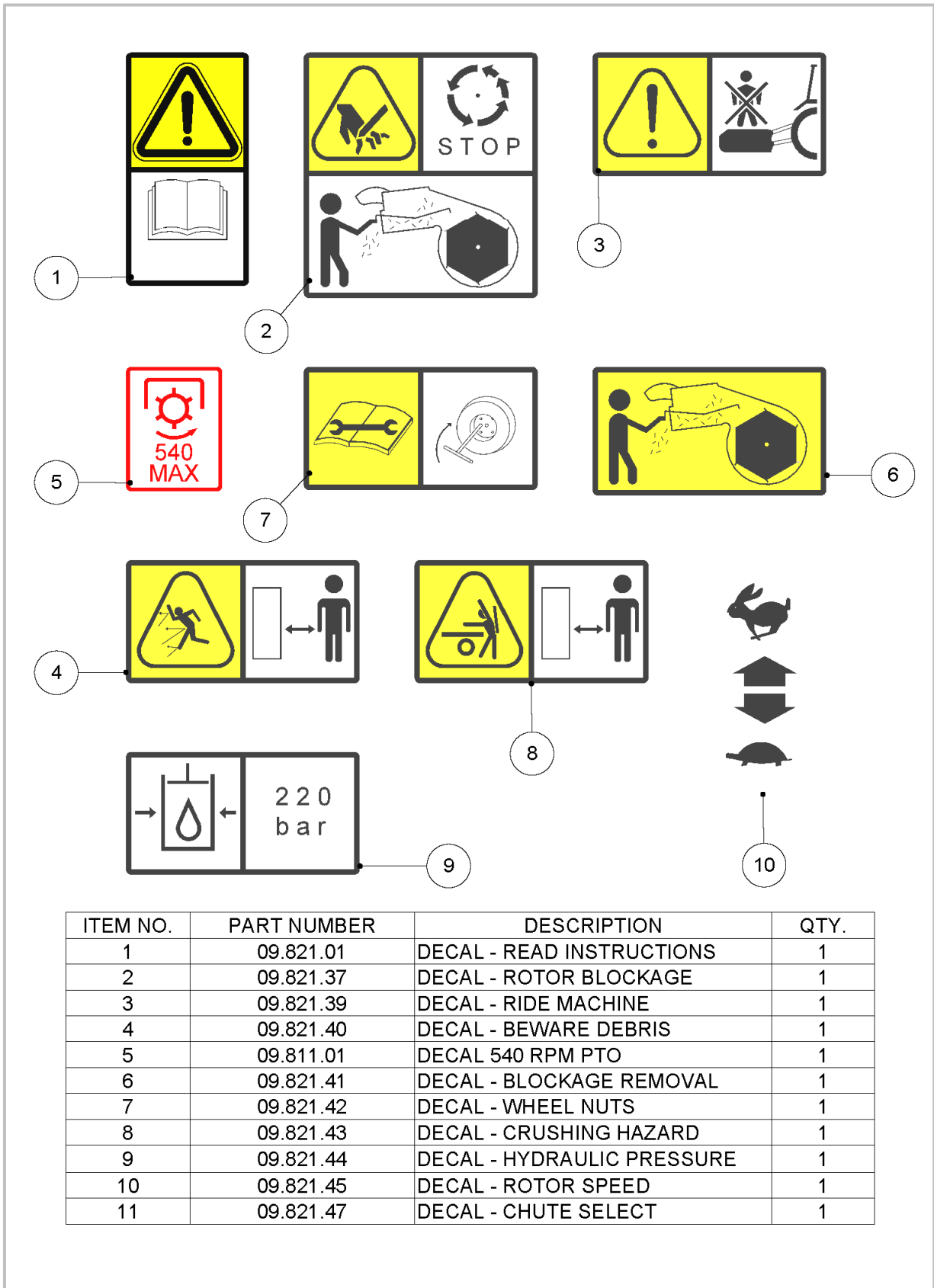
HOSE	SIZE	LENGTH	PART NUMBER
A	1/2"	3100	10.006.41
B	1/2"	2700	10.006.37
C	1/2"	1700	10.006.27
D	1/2"	1700	10.006.27
E	3/8"	1800	10.004.23
F	3/8"	1800	10.004.23
G	1/4"	3400	10.002.44
H	1/4"	3400	10.002.44
I	3/8"	3500	10.004.45
J	3/8"	3500	10.004.45
K	3/8"	1400	10.003.24
L	3/8"	1400	10.003.24
M	3/8"	650	10.003.13
N	3/8"	650	10.003.13

HOSE COVERS	NUMBER	LENGTH	PART NUMBER
	10	500	43543.06
	11	800	43543.05
	12	1100	43543.07
	13	1500	43543.09
	14	1800	43543.08



SAFETY DECALS

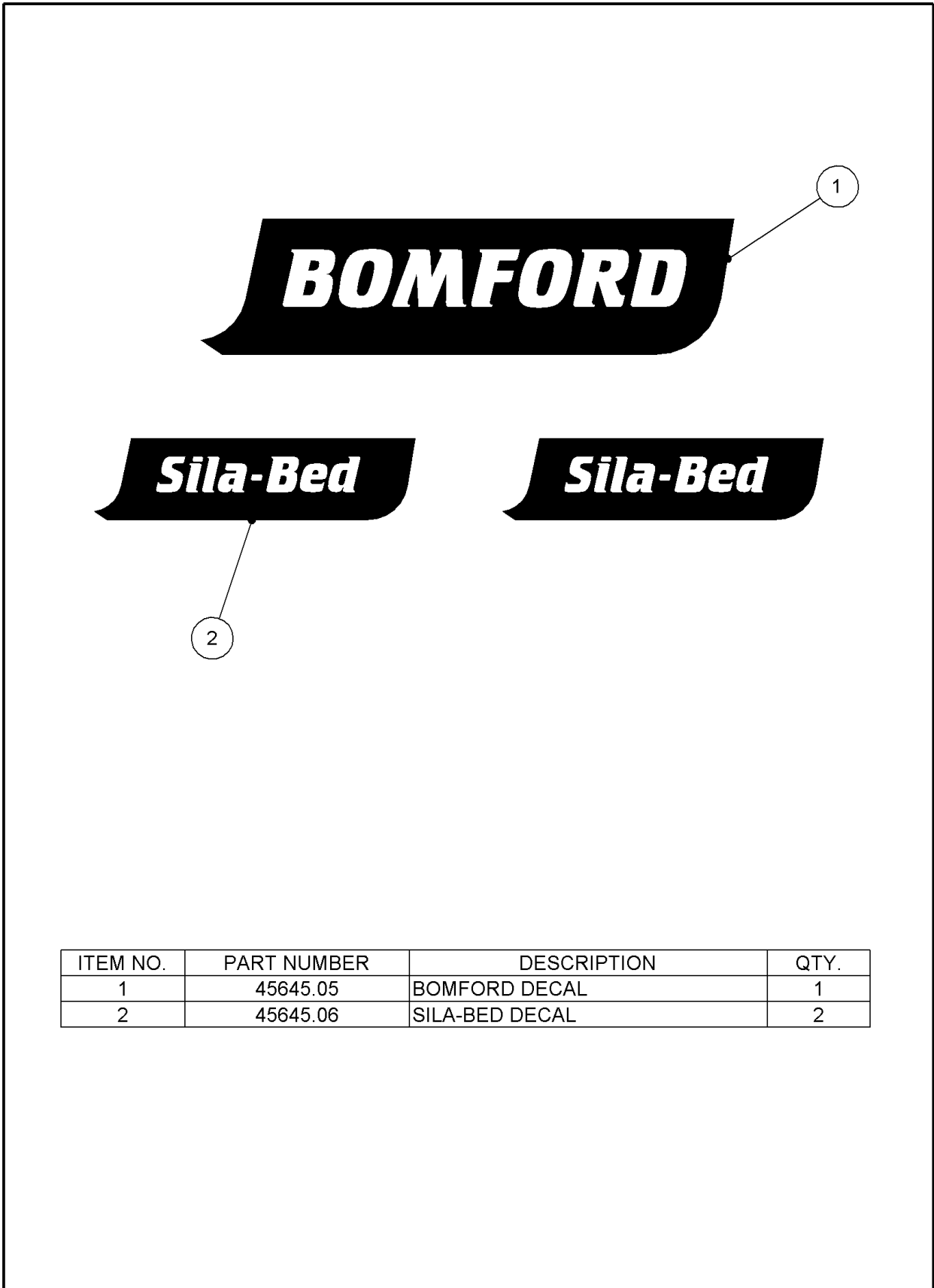
77.513.01 REV : A



ITEM NO.	PART NUMBER	DESCRIPTION	QTY.
1	09.821.01	DECAL - READ INSTRUCTIONS	1
2	09.821.37	DECAL - ROTOR BLOCKAGE	1
3	09.821.39	DECAL - RIDE MACHINE	1
4	09.821.40	DECAL - BEWARE DEBRIS	1
5	09.811.01	DECAL 540 RPM PTO	1
6	09.821.41	DECAL - BLOCKAGE REMOVAL	1
7	09.821.42	DECAL - WHEEL NUTS	1
8	09.821.43	DECAL - CRUSHING HAZARD	1
9	09.821.44	DECAL - HYDRAULIC PRESSURE	1
10	09.821.45	DECAL - ROTOR SPEED	1
11	09.821.47	DECAL - CHUTE SELECT	1

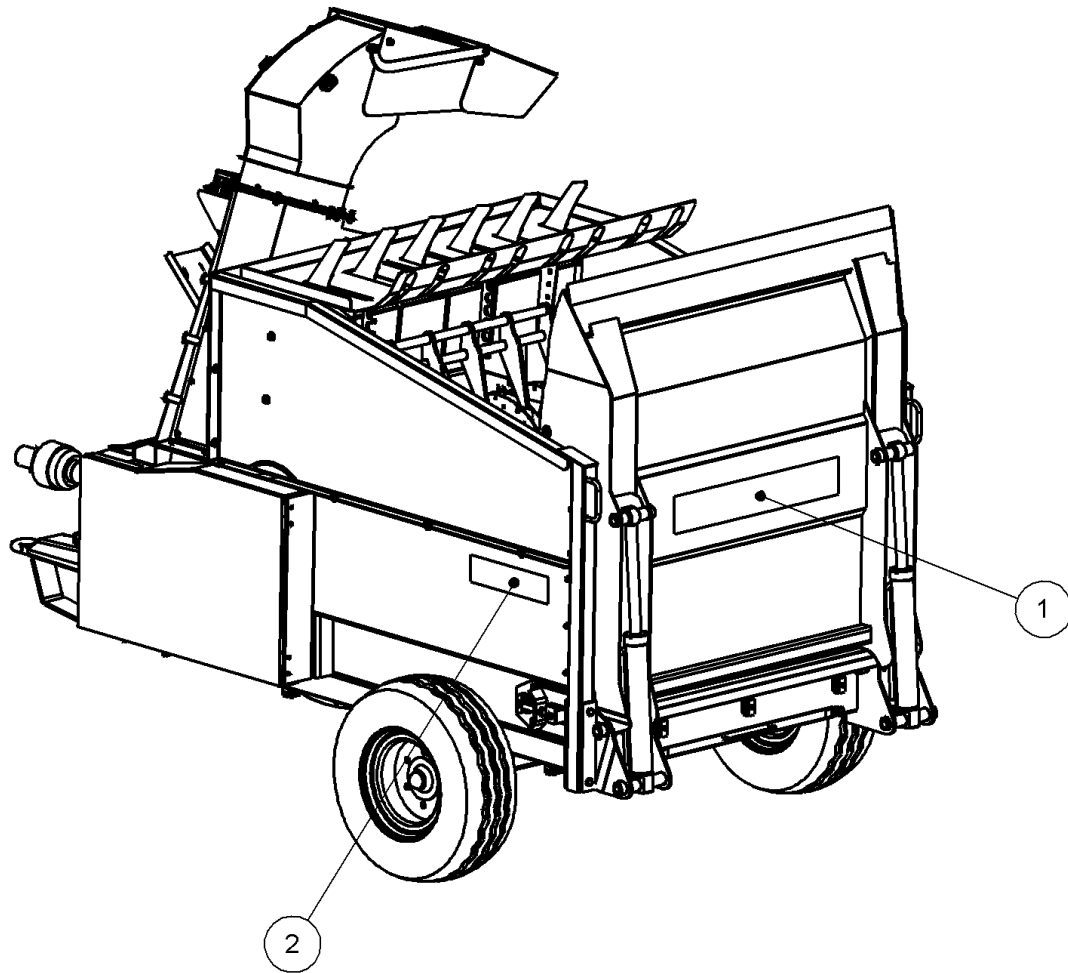
MARKETING DECALS

77.517.01 REV : A



ITEM NO.	PART NUMBER	DESCRIPTION	QTY.
1	45645.05	BOMFORD DECAL	1
2	45645.06	SILA-BED DECAL	2

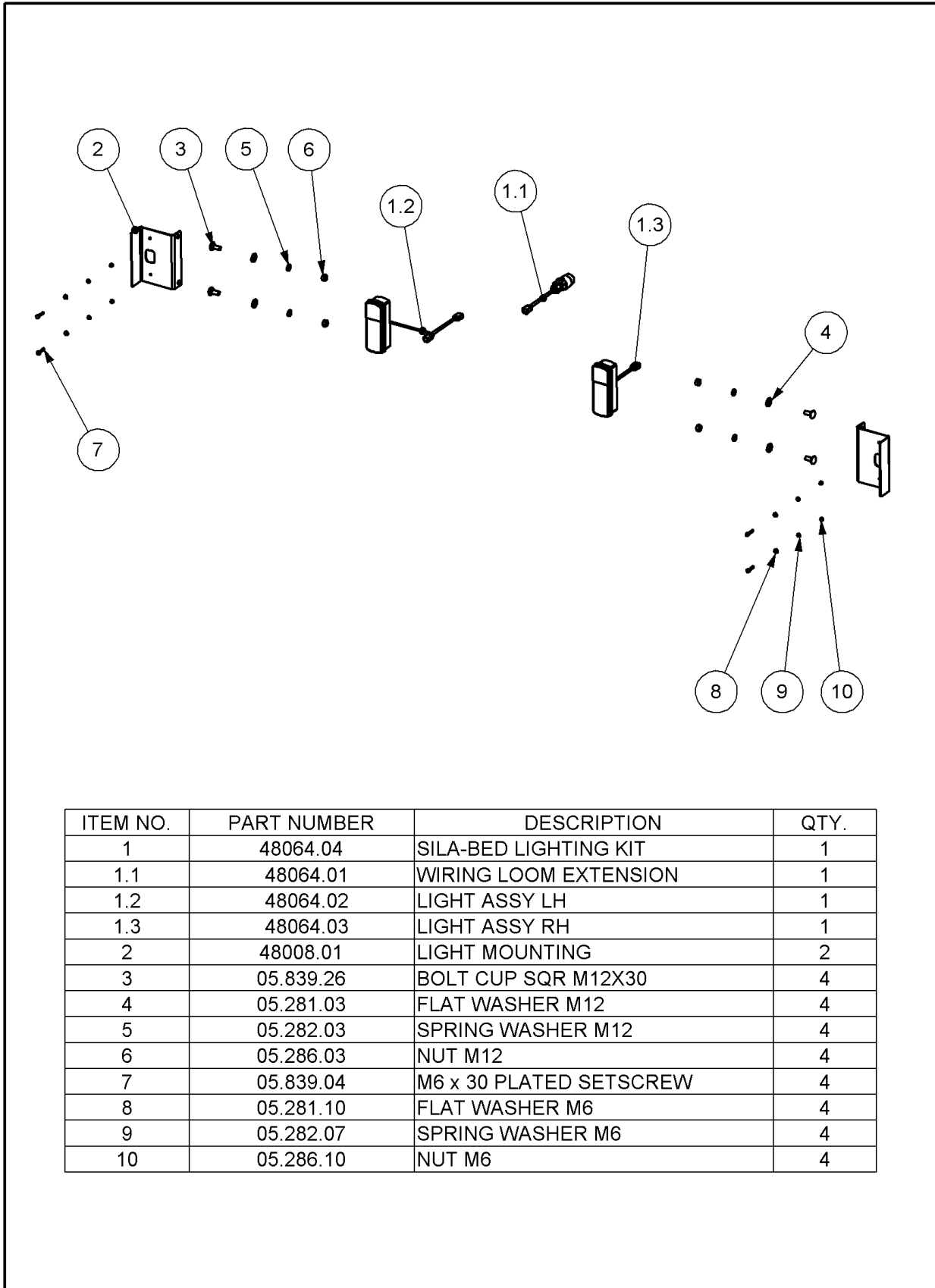
DECAL LAYOUT



ITEM NO.	PART NUMBER	DESCRIPTION	QTY
1	45645.05	BOMFORD DECAL	1
2	45645.06	SILA-BED DECAL	2

LIGHTING KIT - SILA-BED

77.514.01 REV : A



ITEM NO.	PART NUMBER	DESCRIPTION	QTY.
1	48064.04	SILA-BED LIGHTING KIT	1
1.1	48064.01	WIRING LOOM EXTENSION	1
1.2	48064.02	LIGHT ASSY LH	1
1.3	48064.03	LIGHT ASSY RH	1
2	48008.01	LIGHT MOUNTING	2
3	05.839.26	BOLT CUP SQR M12X30	4
4	05.281.03	FLAT WASHER M12	4
5	05.282.03	SPRING WASHER M12	4
6	05.286.03	NUT M12	4
7	05.839.04	M6 x 30 PLATED SETSCREW	4
8	05.281.10	FLAT WASHER M6	4
9	05.282.07	SPRING WASHER M6	4
10	05.286.10	NUT M6	4