

PM 914

SCIMITAR 18 & 27

PASTURE TOPPER

PARTS MANUAL

ISSUE 1

IMPORTANT

NOTE HERE THE SERIAL NUMBER OF YOUR MACHINE AND ALWAYS QUOTE IT IN ANY COMMUNICATION WITH US OR YOUR DEALER. THIS IS PARTICULARLY IMPORTANT WHEN ORDERING SPARES. REMEMBER TO INCLUDE ALL NUMBERS AND LETTERS.

MACHINE SERIAL NUMBERS _____

THE INFORMATION GIVEN THROUGHOUT THIS MANUAL IS CORRECT AT THE TIME OF PUBLICATION. HOWEVER, IN THE COURSE OF CONSTANT DEVELOPMENT OF BOMFORD TURNER MACHINES, CHANGES IN SPECIFICATION ARE INEVITABLE. SHOULD YOU FIND THE INFORMATION GIVEN IN THIS BOOK TO BE AT VARIANCE WITH THE MACHINE IN YOUR POSSESSION, YOU ARE ADVISED TO CONTACT THE BOMFORD TURNER SERVICE DEPARTMENT WHERE UP-TO-DATE INFORMATION WILL BE PROVIDED. THE MANUAL CAN CONTAIN STANDARD AND OPTIONAL FEATURES AND IS NOT TO BE USED AS A MACHINE SPECIFICATION. THE MACHINE HAS BEEN TESTED AND IS CONSIDERED SAFE IF CAREFULLY USED. ENSURE YOUR OPERATOR IS PROPERLY TRAINED IN ITS USE AND MAINTENANCE.

IMPORTANT

NOTEZ ICI LES NUMEROS DE SERIE DE VOTRE MACHINE ET MENTIONNEZ LES DANS TOUTE COMMUNICATION AVEC NOS SERVICES OU VOTRE REVENDEUR. CE CI EST IMPORTANT POUR LA COMMANDE DE PIECES DETACHEES. PENSEZ A NOTER TOUTS LES NUMEROS ET TOUTES LES LETTRES.

NUMEROS DE SERIE DE LA MACHINE _____

LES INFORMATIONS DONNEES DANS CE MANUEL SONT CORRECTES CEPENDANT, DU FAIT DE DEVELOPEMENT CONSTANT DES MACHINES BOMFORD TURNER. CHANGEMENTS DANS LES CARACTERISTIQUES SONT INEVITABLES. SI VOUS TROUVEZ QUE LES INFORMATIONS DONNEES NE CORRESPONDENT PAS A VOTRE MACHINE VEUILLEZ CONTACTER LE SERVICE DES REPARATIONS OU DES INFORMATIONS PLUS RECENTES VOUS SERONT DONNEES. CE MANUEL PEUT MONTRER DES CARACTERISTIQUES OPTIONNELLES ET NE PEUT PAS ETRE CONSIDERE COMME SPECIFICATION DE LA MACHINE. CETTE MACHINE A ETE TESTEE, ET ELLE EST CONSIDEREE COMME FIABLE A CONDITION D'UNE BONNE UTILISATION. ASSUREZ-VOUS QUE VOTRE OPERATEUR EST QUALIFIE EN CE QUI CONCERNE L'UTILISATION DE LA MACHINE ANSI QUE SON ENTRETIEN.

WICHTIG

TRAGEN SIE HIER DIE SERIENNUMMERN IHRER MASCHINE EIN UND GEBEN SIE DIESE IMMER AN, WENN SIE SICH AN UNS ODER IHREN HÄNDLER WENDEN. DAS IST BESONDERS BEI ERSATZTEILBESTELLUNGEN WICHTIG. VERGESSEN SIE NICHT, ALLE ZAHLEN UND BUCHSTABEN ZU NOTIEREN.

SERIENNUMMERN DER MASCHINE _____

DIE ANGABEN IN DIESEM HANDBUCH SIND BEI VERÖFFENTLICHUNG KORREKT. AUFGRUND DER KONSTANTEN WEITERENTWICKLUNG VON BOMFORD TURNER MASCHINEN SIND JEDOCHÄNDERUGDEN IN DER SPEZIFIKATION UNVERMEIDLICH, WENN DIE INFORMATION IN DIESEM HANDBUCH NICHT MIT IHRER MASCHINE ÜBEREINSTIMMEN, NEHMEN SIE BITTE KONTAKT MIT DER BOMFORD TURNER KUNDENDIENSTABTEILUNG AUF, DIE IHNEN GERNE DIE AKTUELLEN INFORMATION ZUKOMMEN LÄSST. DAS HANDBUCH KANN SOWOHL BESCHREIBUNGEN FÜR DIE STANDARD AUSFÜHRUNG ALS AUCH FÜR ZUBEHÖR ENTHALTEN UND IST NICHT ALS MASCHINENSPEZIFIKATION ZU VERWENDET. DIE MASCHINE IST GETESTET UND BEI SACHGEMASSEM BETRIEB ALS SICHER BEFUNDEN WORDEN. SORGEN SIE DAFÜR, DASS IHR BEDIENPERSONAL IN ANWENDUNG UND WARTUNG RICHTIG GESCHULT WIRD.

SCIMITAR 18 & 27 PASTURE TOPPER

PAGE AND ILLUSTRATION NUMBERS ARE USED ONLY FOR REFERENCE PURPOSES AND SHOULD NOT BE USED FOR ORDERING SPARE PARTS. PLEASE ENSURE THE CORRECT PART NUMBER AND DESCRIPTION IS GIVEN WHEN ORDERING SPARE PARTS.

FOR MACHINES WITH SERIAL NUMBERS COMMENCING FROM:

Mainframe1390V.....

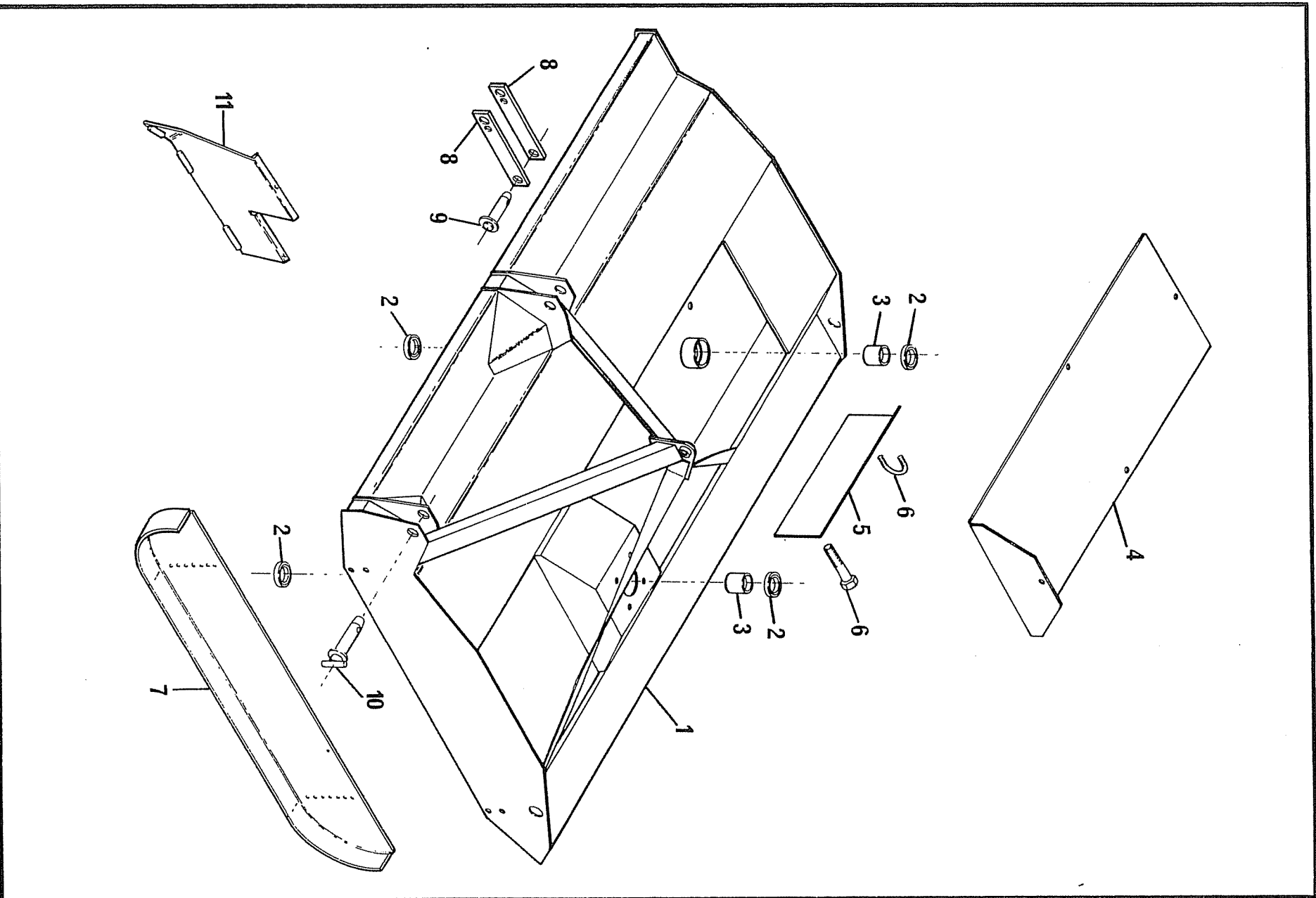
Page No.	Description	Schedule No.
SCIMITAR 18		
2-1 TO 2-2	MAINFRAME	71.515.04
3-1 TO 3-2	ROTOR BEAM	71.513.02
4-1 TO 4-2	PTO/GEARBOX/PULLEY ASSEMBLY	71.514.04
5-1 TO 5-2	DECALS	71.512.03
6-1 TO 6-2	Optional Extras: FRONT GUARD KIT ROLLER KIT	71.605.01 71.839.01
SCIMITAR 27		
7-1 TO 7-2	MAINFRAME	71.511.02
	'A'FRAME	71.516.03
8-1 TO 8-2	ROTOR BEAM	71.517.02
9-1 TO 9-2	PTO/GEARBOX/PULLEY ASSEMBLY	71.518.03
10-1 TO 10-2	DECALS	71.512.03
11-1 TO 11-2	Optional Extras: FRONT GUARD KIT ROLLER KIT	71.606.01 71.853.01
11-3 TO 11-4	Optional Extras: OVERLAP KNIFE KIT	76.148.01

IMPORTANT

IT IS POTENTIALLY HAZARDOUS TO FIT OR USE ANY PARTS OTHER THAN GENUINE BOMFORD PARTS. THE COMPANY DISCLAIMS ALL LIABILITY FOR THE CONSEQUENCES OF SUCH USE, WHICH IN ADDITION VOIDS THE MACHINE WARRANTY.

THE ILLUSTRATIONS AND TEXT COMBINE STANDARD, ALTERNATIVE AND OPTIONAL PARTS AND MUST NOT BE USED AS A PRODUCT SPECIFICATION

MAINFRAME
SCIMITAR 18



914

71.515.03

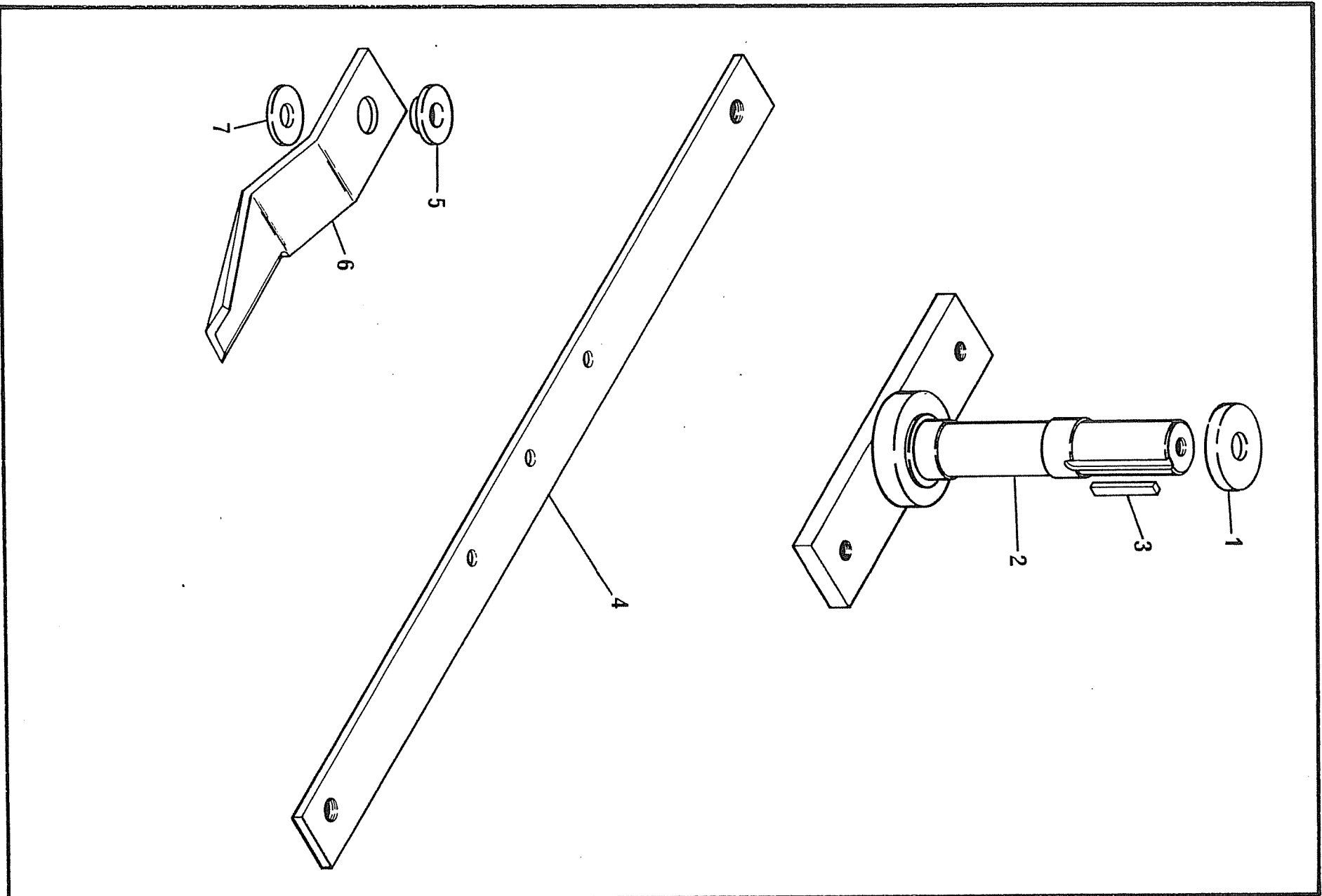
**MAINFRAME
SCIMITAR 18**

1186

REF	PART NO.	DESCRIPTION	QTY	SERIAL NO. FROM - TO
01	05.227.01	HAMMER DRIVE SCREW NO.6 X 3/8"	2	
01	05.774.01	SERIAL NUMBER PLATE	1	
*01	06.793.01	MAINFRAME	1	
*02	03.007.06	BEARING - BALL 40MM BORE	4	
*03	06.782.01	SPACER 50 O/D X 40.2 I/D X 76	2	
04	05.264.21	SETSCREW M12 X 20MM PLATED	4	
04	05.281.03	FLAT WASHER 12MM PLATED	4	
04	05.282.03	SPRING WASHER 12MM PLATED	4	
*04	06.789.01	GUARD - BELT	1	
05	06.784.01	GUARD - FLAP	4	1542V
06	05.281.02	FLAT WASHER 10MM PLATED	8	1542V
06	05.282.01	SPRING WASHER 8MM PLATED	16	1542V
06	05.286.01	NUT M8 PLATED	32	1542V
*06	06.232.01	U BOLT-M8	8	1542V
06	06.357.01	SPRING-COMP 15.9 DIA X 101.6	4	1542V
*05	06.784.02	GUARD FLAP	4	1543V
*06	05.291.17	BOLT M10 X 60MM	8	1543V
06	05.286.02	NUT M10 PLATED	8	1543V
06	05.281.03	FLAT WASHER M12 PLATED	8	1543V
06	05.287.02	SELF - LOCKING NUT M10	8	
07	05.264.23	SETSCREW M12 X 30MM PLATED	8	
07	05.282.03	SPRING WASHER 12MM PLATED	8	
07	05.286.03	NUT M12 PLATED	8	
*07	06.911.01	SKID - SIDE	2	
*08	06.790.02	STAY - TOP LINK	2	
09	00.372.01	LINCH PIN	1	
*09	03.043.01	PIN 25 DIA X 105	1	
10	00.372.01	LINCH PIN	2	
*10	00.550.02	PIN 1.1/8"DIA X 4.1/2	2	
*11	06.906.01	PLATE - GRASS DEFLECTOR	1	
11	05.264.12	SETSCREW M10 X 25MM PLATED	2	
11	05.281.02	FLAT WASHER 10MM PLATED	2	
11	05.287.02	SELF - LOCKING NUT M10 PLATED	2	

*MAIN PART IN GROUP, RELATED PARTS HAVE SAME REFERENCE NUMBER

ROTOR BEAM
SCIMITAR 18



914

0487

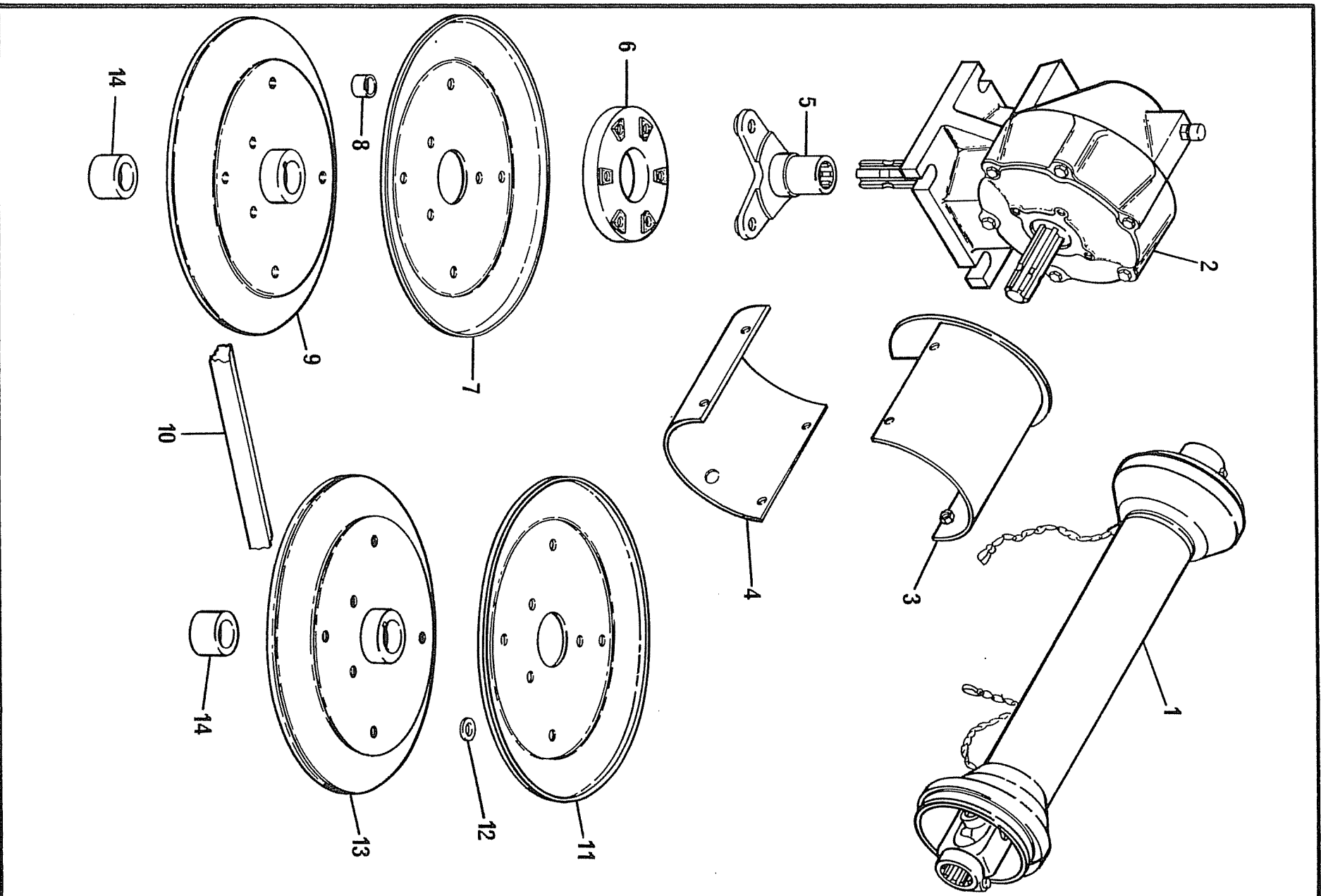
71.513.02

**ROTOR BEAM
SCIMITAR 18**

REF	PART NO.	DESCRIPTION	QTY	SERIAL NO. FROM - TO
*01	04.252.01	WASHER 65 O/DX17 I/DX8MM	2	
02	05.264.33	SETSCREW M16 X 30MM PLATED	2	
02	05.282.04	SPRING WASHER 16MM PLATED	2	
*02	06.783.01	ROTOR SHAFT	2	
*03	05.960.15	KEY - SEP 10 X 8 X 37MM	2	
04	05.264.25	SETSCREW M12 X 40MM PLATED	4	
04	05.287.03	SELF-LOCKING NUT M12 PLATED	4	
*04	07.018.01	ROTOR BEAM	2	
*05	06.237.02	COLLAR 40 O/D X 10.5	4	
*06	06.208.02	KNIFE-FORMED 50 X 170	4	
07	05.839.06	BOLT M16 X 50MM GRADE 10.9	4	
07	05.948.17	SELF LOCKING NUT M16 GRADE 10	4	
*07	06.236.01	WASHER 40 O/D X 16.5 I/D X 5	4	

*MAIN PART IN GROUP, RELATED PARTS HAVE SAME REFERENCE NUMBER.

PTO/GEARBOX/PULLEY ASSEMBLY
SCIMITAR 18



914

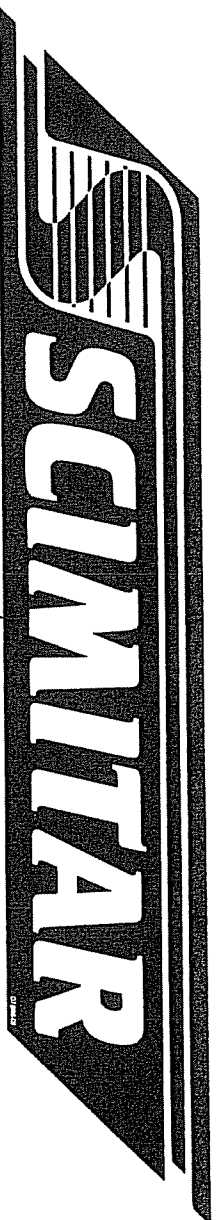
1187

**PTO/GEARBOX/PULLEY ASSEMBLY
SCIMITAR 18**

71.514.04

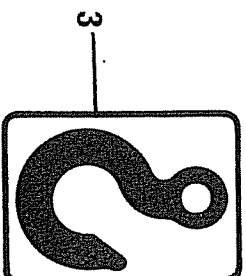
REF	PART NO.	DESCRIPTION	QTY	SERIAL NO. FROM - TO
*01	06.743.03	PTO SHAFT ASSY 1010MM C/C	1	
01	05.291.05	BOLT M8 X 50MM	-	
01	05.287.01	SELF-LOCKING NUT	-	
01	06.743.02	PTO GUARD ASSY 1010MM C/C	-	
02	05.264.37	SETSCREW M16 X 50MM PLATED	4	
02	05.281.04	FLAT WASHER 16MM PLATED	4	
02	05.287.04	SELF-LOCKING NUT M16 PLATED	4	
*02	06.725.01	GEARBOX ASSY	1	
02	06.725.02	SEAL KIT FOR 0672501 GEARBOX	-	
03	05.264.01	SETSCREW M8 X 20MM PLATED	4	
03	05.282.01	SPRING WASHER 8MM PLATED	4	
*03	06.117.02	GUARD P.T.O.	1	
04	05.264.01	SETSCREW M8 X 20MM PLATED	4	
04	05.282.01	SPRING WASHER 8MM PLATED	4	
*04	06.090.02	GUARD - P.T.O.	1	
05	05.281.03	FLAT WASHER 12MM PLATED	3	
05	05.287.03	SELF-LOCKING NUT M12 PLATED	3	
*05	06.350.01	FLANGE-GEARBOX DRIVE	1	
05	06.355.01	SPECIAL-BOLT M12 X 45	3	
06	04.282.40	STUD - M12 X 115.5 (STEPPED)	3	
06	07.328.01	SPACER - 30MM O/D X 17MM I/D X 20.5MM	3	
06	05.281.03	FLAT WASHER 12MM PLATED	3	
06	05.287.03	SELF-LOCKING NUT M12 PLATED	6	
*06	06.354.01	COUPLING-FLEXIBLE DISC	1	
*07	06.780.02	PULLEY - SPC 305/345 PCD (TOP)	1	
*08	06.788.01	SPACER 3/4"O/D X11SWG X 12.5	7	
09	05.264.25	SETSCREW M12 X 40MM	3	
09	05.282.03	SPRING WASHER 12MM PLATED	3	
09	05.286.03	NUT M12 PLATED	4	
*09	06.841.01	PULLEY-SPC305/345 PCD (BOTTOM)	1	
*10	05.299.31	BELT-VEE SPC X 2800MM	1	
*11	06.780.02	PULLEY - SPC 305/345 PCD (TOP)	1	
*12	05.281.03	FLAT WASHER 12MM PLATED	20	
13	05.264.25	SETSCREW M12 X 40MM	3	
13	05.282.03	SPRING WASHER 12MM PLATED	3	
13	05.286.03	NUT M12 PLATED	3	
*13	06.841.01	PULLEY-SPC305/345 PCD (BOTTOM)	1	
*14	06.787.01	SPACER 50 O/D X 38.3I/D X 27	2	

*MAIN PART IN GROUP, RELATED PARTS HAVE SAME REFERENCE NUMBER.



IMPORTANT
ENSURE THAT ALL NUTS ARE
KEPT FULLY TIGHTENED

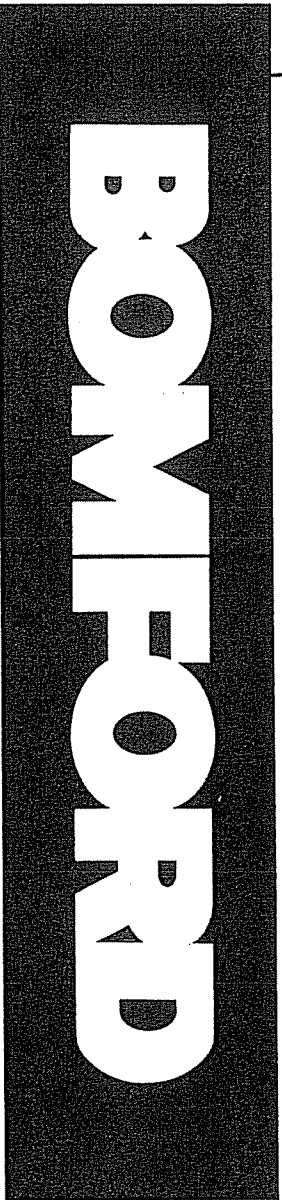
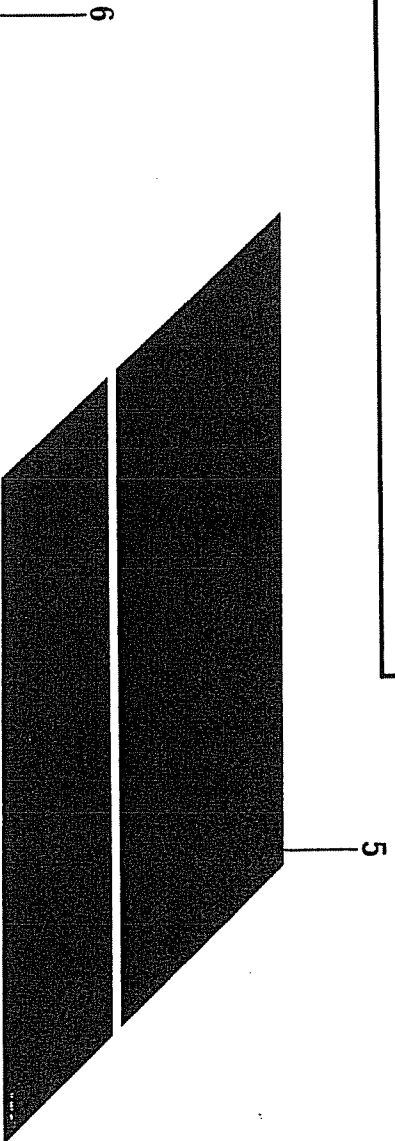
05 349 01



02 949 01

CRANE LIFTING CAPACITY
DRY WEIGHT OF THIS UNIT DOES NOT EXCEED
500 Kg. (1100 lbs)
FOR OPERATIONAL WEIGHT ADD ATTACHMENTS, OIL, ETC.
If in doubt contact Bomford & Evershed Ltd.

06 007 03



914

0389

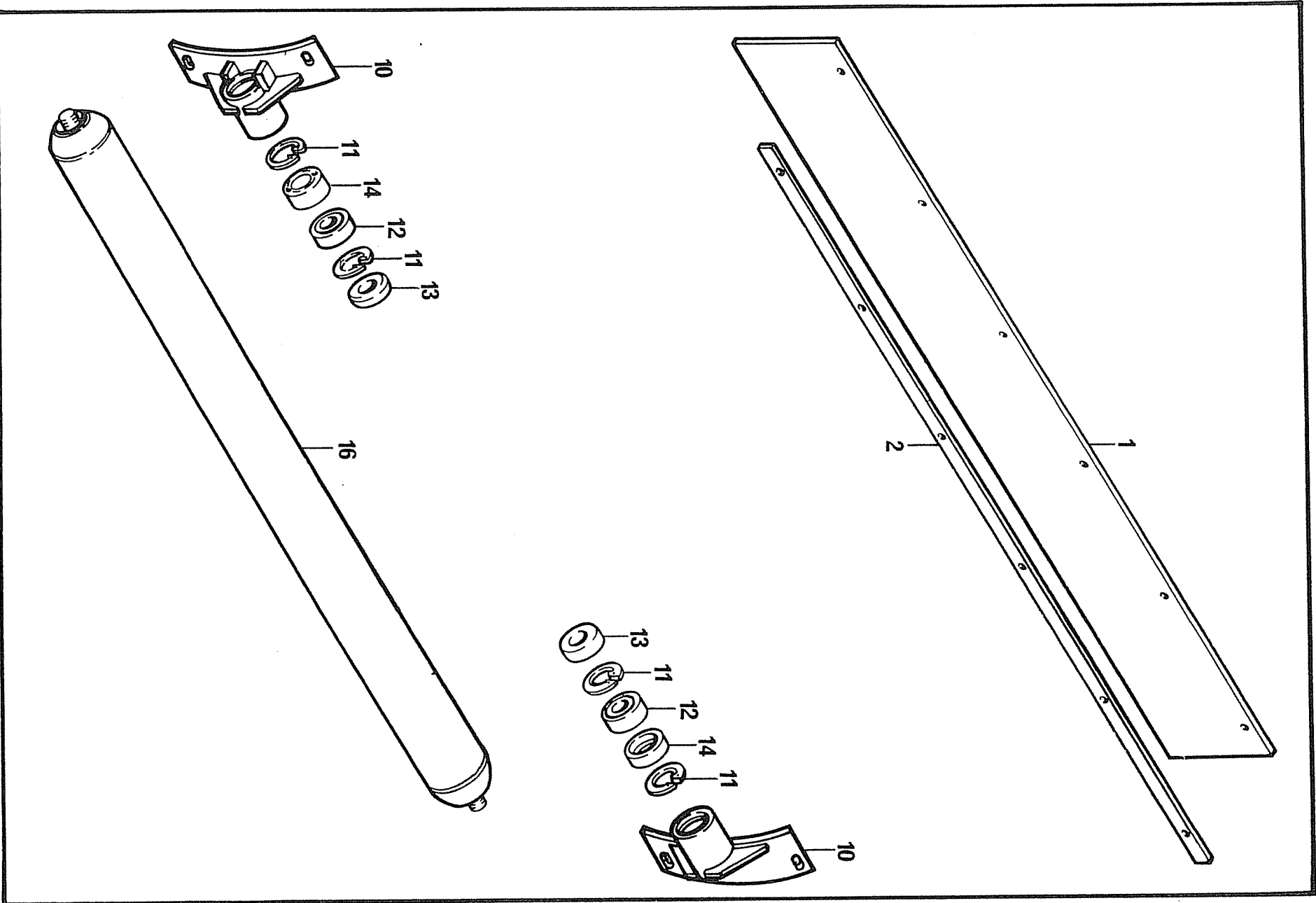
**DECALS
SCIMITAR 18**

71.512.03

REF	PART NO.	DESCRIPTION	QTY	SERIAL NO. FROM - TO
*01	07.696.01	DECAL - SCIMITAR	1	
*02	05.349.01	DECAL - IMPORTANT (NUTS TIGHT)	1	
*03	02.949.01	DECAL - LIFTING SYMBOL	4	
*04	06.007.03	DECAL - WEIGHT 500KG	1	
*05	07.697.01	DECAL - STRIPE	2	
*06	06.958.02	DECAL - BOMFORD	2	

*MAIN PART IN GROUP, RELATED PARTS HAVE SAME REFERENCE NUMBER.

OPTIONAL EXTRAS - SCIMITAR 18



914

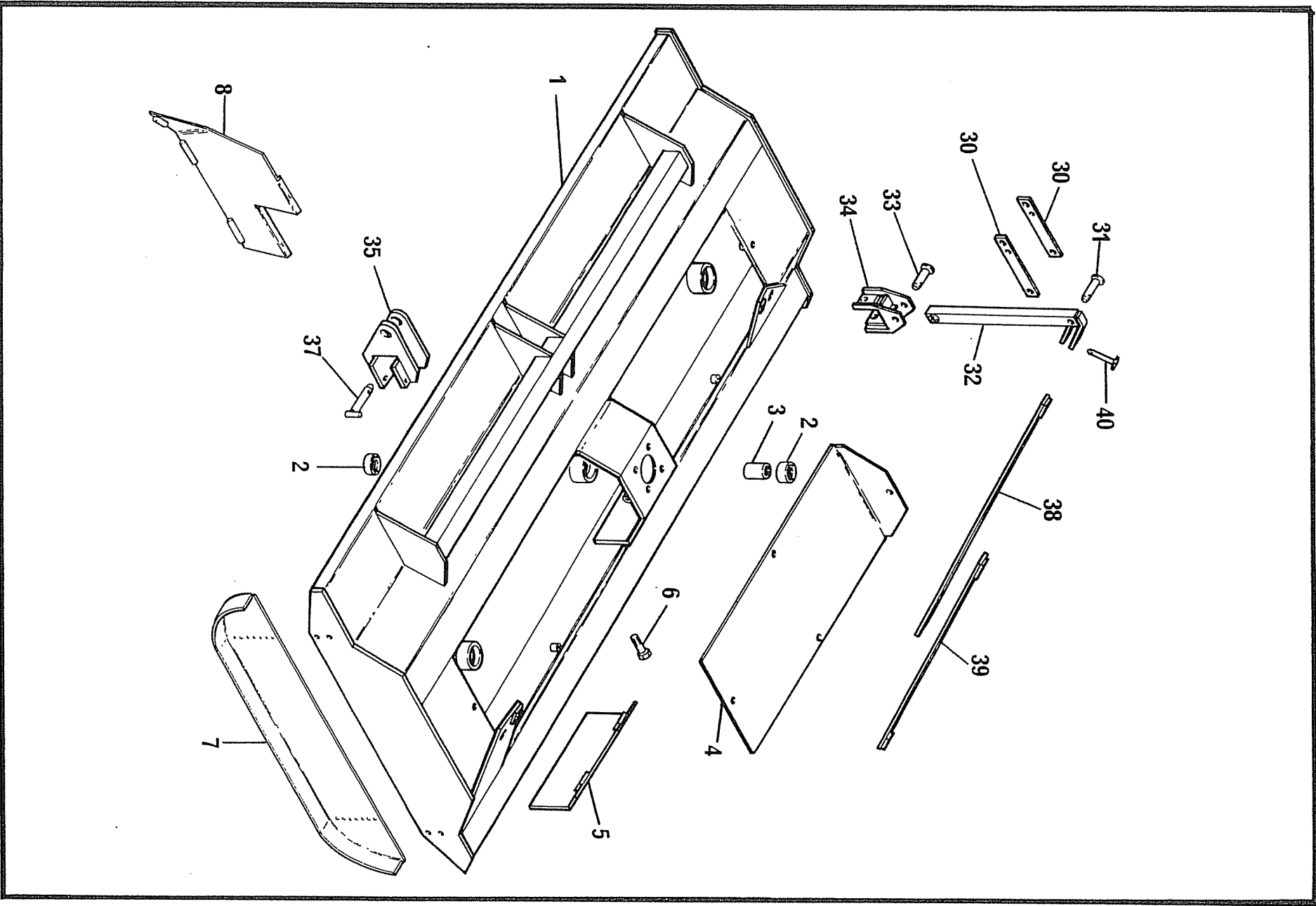
OPTIONAL EXTRAS - SCIMITAR 18

1187

REF	PART NO.	DESCRIPTION	QTY	SERIAL NO. FROM - TO
<u>FRONT GUARD KIT</u>				
	71.605.01			
*01	06.842.01	GUARD - VELBEX 1911MM	1	
*02	06.843.01	STRIP - BACKING 1911MM	1	
02	05.264.02	SETSCREW M8 X 25MM PLATED	10	
02	05.287.01	SELF - LOCKING NUT M8 PLATED	10	
<u>ROLLER KIT</u>				
	71.839.01			
06	07.344.01	SCIMITAR 18 ROLLER PROD ASSY	-	(INC REF 10-16)
10	05.264.23	SETSCREW M12 X 30MM PLATED	8	
10	05.281.03	FLAT WASHER 12MM PLATED	8	
10	05.287.03	SELF-LOCKING NUT M12 PLATED	8	
*10	07.343.01	BRACKET - ROLLER	4	
*11	05.959.05	CIRCLIP - INT 62MM DIA	8	
*12	03.007.02	BEARING - BALL 30MM BORE	4	
*13	04.164.04	SEAL-LIP 4ODIA X 10MM	4	
*14	04.394.01	FLANGE-BEARING RETAINER	4	
14	05.953.01	GREASE NIPPLE M6	8	
15	05.234.01	WASHER 1.3/4" X 17/32" X 3/16"	4	
15	05.264.23	SETSCREW M12 X 30MM PLATED	4	
15	05.282.03	SPRING WASHER 12MM PLATED	4	
*16	04.388.05	ROLLER 114 DIA X 1800	2	

* MAIN PART IN GROUP, RELATED PARTS HAVE SAME REFERENCE NUMBER.

MAINFRAME/A FRAME
SCIMITAR 27



914

**MAINFRAME/A FRAME
SCIMITAR 27**

0487

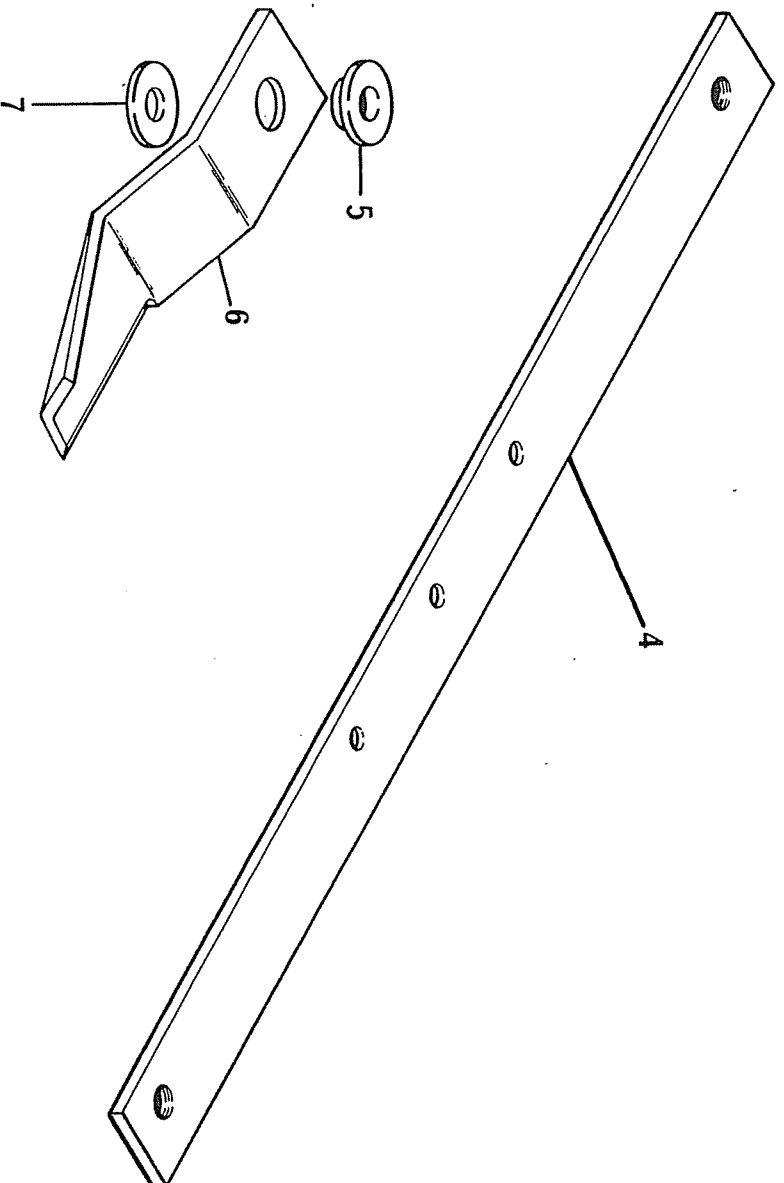
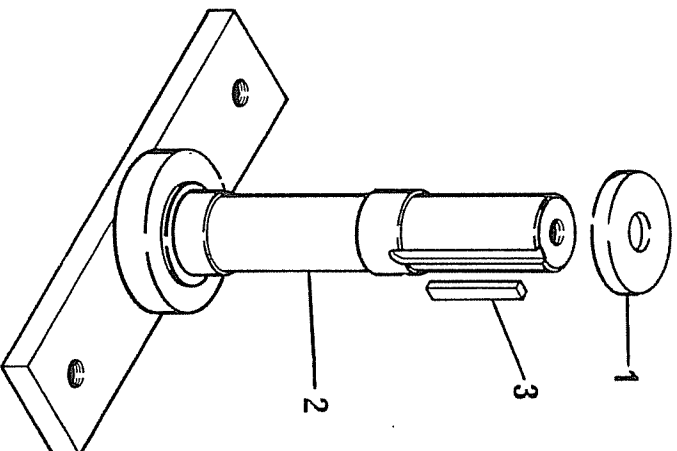
REF	PART NO.	DESCRIPTION	QTY	SERIAL NO. FROM - TO
<u>71.511.02</u>				
<u>MAINFRAME</u>				
*01	06.794.01	MAINFRAME	1	
01	05.774.01	SERIAL NUMBER PLATE	1	
01	05.227.01	HAMMER DRIVE SCREW NO.6 X 3/8"	2	
*02	03.007.06	BEARING - BALL 40MM BORE	6	
*03	06.782.01	SPACER 50 O/D X 40.2 I/D X 76	3	
04	05.264.21	SETSCREW M12 X 20MM PLATED	8	
04	05.281.03	FLAT WASHER 12MM PLATED	8	
04	05.282.03	SPRING WASHER 12MM PLATED	8	
*04	06.789.01	GUARD - BELT	2	
*05	06.784.02	GUARD - FLAP	2	
*06	05.291.17	BOLT M10 X 60MM PLATED	12	
06	05.287.02	SELF LOCKING NUT M10 PLATED	12	
06	05.286.02	NUT M10 PLATED	12	
06	05.281.03	FLAT WASHER 12MM PLATED	12	
07	05.264.23	SETSCREW M12 X 30MM PLATED	8	
07	05.282.03	SPRING WASHER 12MM PLATED	8	
07	05.286.03	NUT M12 PLATED	8	
*07	06.911.01	SKID - SIDE	2	
*08	06.906.02	PLATE - GUARD DEFLECTOR	2	
08	05.264.12	SETSCREW M10 X 25MM PLATED	4	
08	05.281.02	FLAT WASHER 10MM PLATED	4	
08	05.287.02	SELF - LOCKING NUT M10 PLATED	4	

71.516.03'A' FRAME

*30	06.790.02	STAY - TOP LINK	2	
31	00.372.01	LINCH PIN	1	
*31	03.043.01	PIN 25 DIA X 105	1	
*32	06.795.01	STAY - A FRAME	1	
33	00.372.01	LINCH PIN	1	
*33	03.653.03	PIN 25 DIA X 106	1	
*34	06.796.01	BRACKET - A FRAME	1	
34	05.292.23	BOLT M12 X 100MM PLATED	1	
34	05.282.03	SPRING WASHER 12MM PLATED	1	
*35	07.019.01	BRACKET - LINKAGE	1	
35	05.292.23	BOLT M12 X 100MM PLATED	4	
35	05.282.03	SPRING WASHER 12MM PLATED	4	
*37	00.550.02	PIN 1.1/8"DIA X 4.1/2	2	
37	00.372.01	LINCH PIN	2	
38	05.264.37	SETSCREW M16 X 50MM PLATED	2	
38	05.282.04	SPRING WASHER 16MM PLATED	2	
38	05.286.04	NUT M16 PLATED	2	
*38	06.791.01	STAY - A FRAME (UPPER)	2	
39	05.264.37	SETSCREW M16 X 50MM PLATED	2	
39	05.282.04	SPRING WASHER 16MM PLATED	2	
39	05.286.04	NUT M16 PLATED	2	
*39	06.792.01	STAY - A FRAME (LOWER)	2	
*40	03.652.01	PIN 20 DIA X 90	1	
40	00.372.01	LINCH PIN	1	

*MAIN PART IN GROUP, RELATED PARTS HAVE SAME REFERENCE NUMBER.

ROTOR BEAM
SCIMITAR 27



914

0487

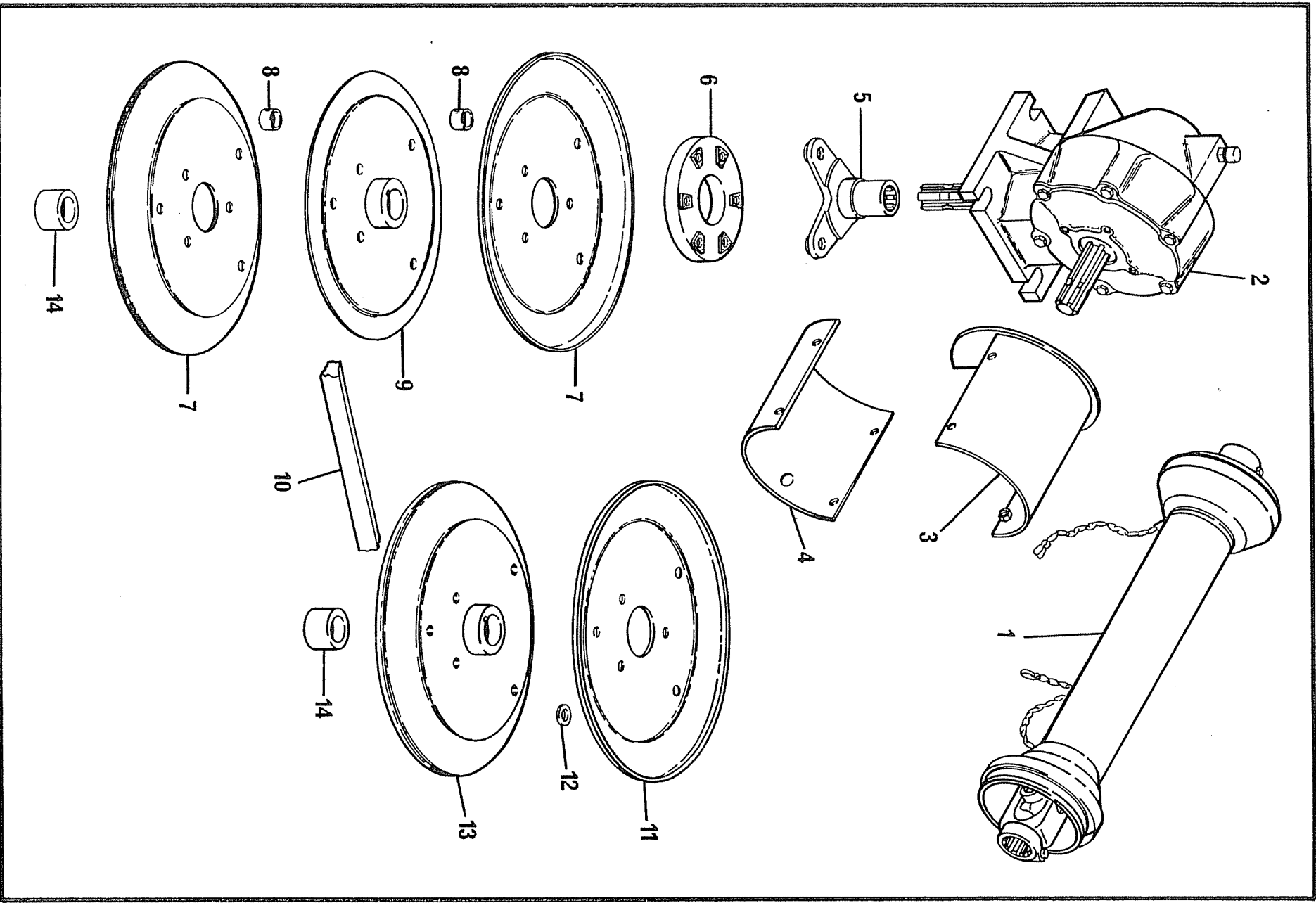
**ROTOR BEAM
SCIMITAR 27**

71.517.02

REF	PART NO.	DESCRIPTION	QTY	SERIAL NO. FROM - TO
*01	04.252.01	WASHER 65 O/D X 17 I/D X 8MM	3	
02	05.264.33	SETSCREW M16 X 30MM PLATED	3	
02	05.282.04	SPRING WASHER 16MM PLATED	3	
*02	06.783.01	ROTOR SHAFT	3	
*03	05.960.15	KEY - SEP 10 X 8 X 37MM	3	
04	05.264.25	SETSCREW M12 X 40MM PLATED	6	
04	05.287.03	SELF-LOCKING NUT M12 PLATED	6	
*04	07.018.01	ROTOR BEAM	3	
*05	06.237.02	COLLAR 40 O/D X 10.5	6	
*06	06.208.02	KNIFE-FORMED 50 X 170	6	
07	05.839.06	BOLT M16 X 50MM GRADE 10.9	6	
07	05.948.17	SELF LOCKING NUT M16 GRADE 10	6	
*07	06.236.01	WASHER 40 O/D X 16.5 I/D X 5	6	

*MAIN PART IN GROUP, RELATED PARTS HAVE SAME REFERENCE NUMBER.

PTO/GEARBOX/PULLEY ASSEMBLY
SCIMITAR 27



914

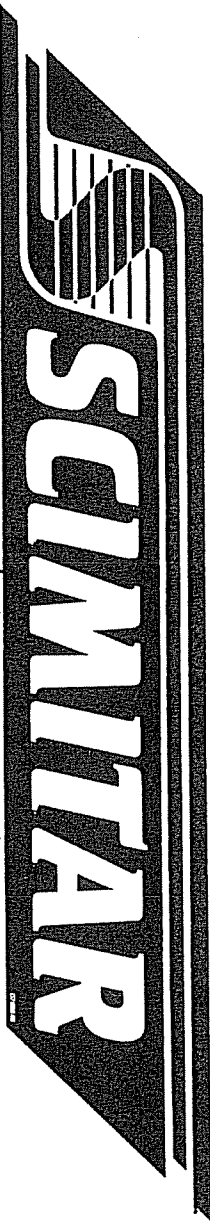
1187

**PTO/GEARBOX /PULLEY ASSEMBLY
SCIMITAR 27**

71.518.03.

REF	PART NO.	DESCRIPTION	QTY	SERIAL NO. FROM - TO
*01	06.743.03	PTO SHAFT ASSY 1010MM C/C	1	
01	05.291.05	BOLT M8 X 50MM	-	
01	05.287.01	SELF-LOCKING NUT	-	
01	06.743.02	PTO GUARD ASSY 1010MM C/C	-	
02	05.264.37	SETSCREW M16 X 50MM PLATED	4	
02	05.281.04	FLAT WASHER 16MM PLATED	4	
02	05.287.04	SELF-LOCKING NUT M16 PLATED	4	
*02	06.725.01	GEARBOX ASSY	1	
02	06.725.02	SEAL KIT FOR 0672501 GEARBOX	-	
03	05.264.01	SETSCREW M8 X 20MM PLATED	4	
03	05.282.01	SPRING WASHER 8MM PLATED	4	
*03	06.117.02	GUARD P.T.O.	1	
04	05.264.01	SETSCREW M8 X 20MM PLATED	4	
04	05.282.01	SPRING WASHER 8MM PLATED	4	
*04	06.090.02	GUARD - P.T.O.	1	
05	05.281.03	FLAT WASHER 12MM PLATED	3	
05	05.287.03	SELF-LOCKING NUT M12 PLATED	3	
*05	06.350.01	FLANGE-GEARBOX DRIVE	1	
05	06.355.01	SPECIAL-BOLT M12 X 45	3	
06	04.282.40	STUD - M12 X 115.5 (STEPPED)	3	
06	07.328.01	SPACER - 30MM O/D X 17MM I/D X 20.5MM	3	
06	05.281.03	FLAT WASHER 12MM PLATED	3	
06	05.287.03	SELF-LOCKING NUT M12 PLATED	6	
*06	06.354.01	COUPLING-FLEXIBLE DISC	1	
*07	06.780.02	PULLEY - SPC 305/345 PCD (TOP)	2	
*08	06.786.01	SPACER 3/4"O/D X11SWG X 10.2	12	
09	05.282.03	SPRING WASHER 12MM PLATED	3	
09	05.286.03	NUT M12 PLATED	3	
09	05.291.27	BOLT M12 X 60MM PLATED	3	
*09	06.785.02	PULLEY - SPC 305 PCD (CENTRE)	1	
*10	05.299.31	BELT-VEE SPC X 2800MM	2	
*11	06.780.02	PULLEY - SPC 305/345 PCD (TOP)	2	
*12	05.281.03	FLAT WASHER 12MM PLATED	30	
13	05.264.25	SETSCREW M12 X 40MM	6	
13	05.282.03	SPRING WASHER 12MM PLATED	6	
13	05.286.03	NUT M12 PLATED	6	
*13	06.841.01	PULLEY-SPC305/345 PCD (BOTTOM)	2	
*14	06.787.01	SPACER 50 O/D X 38.3I/D X 27	3	

*MAIN PART IN GROUP, RELATED PARTS HAVE SAME REFERENCE NUMBER.



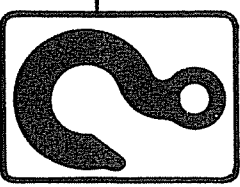
1

IMPORTANT
ENSURE THAT ALL NUTS ARE
KEPT FULLY TIGHTENED

2

05 349 01

3



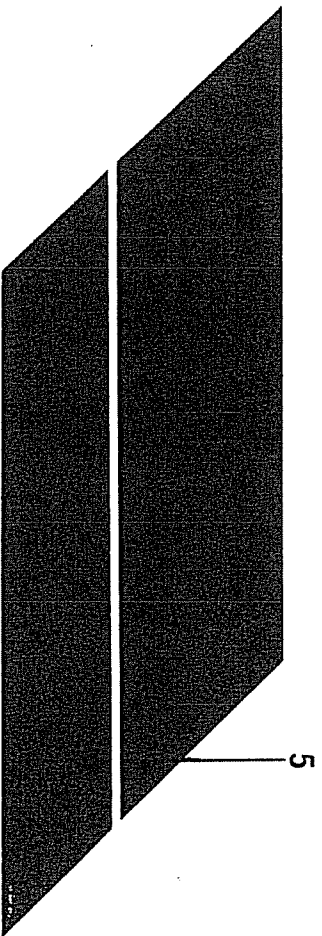
02 949 01

CRANE LIFTING CAPACITY
DRY WEIGHT OF THIS UNIT DOES NOT EXCEED
500 Kg. (1100 lbs)

4

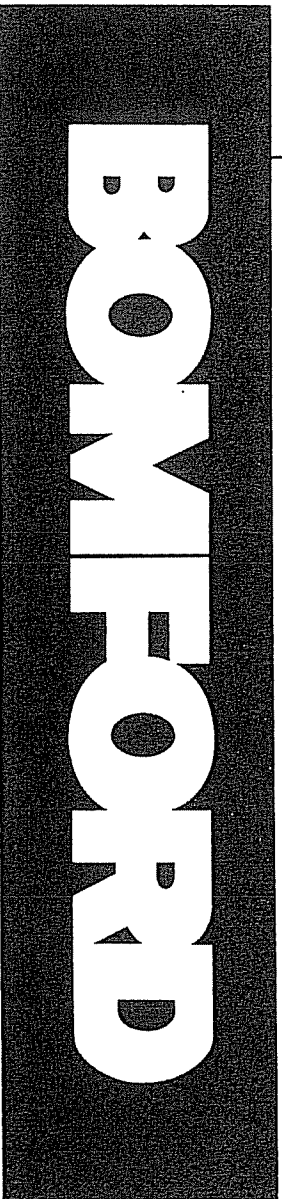
FOR OPERATIONAL WEIGHT ADD ATTACHMENTS, OIL, ETC.
If in doubt contact Bomford & Evershed Ltd.

06 007 03



5

6



914

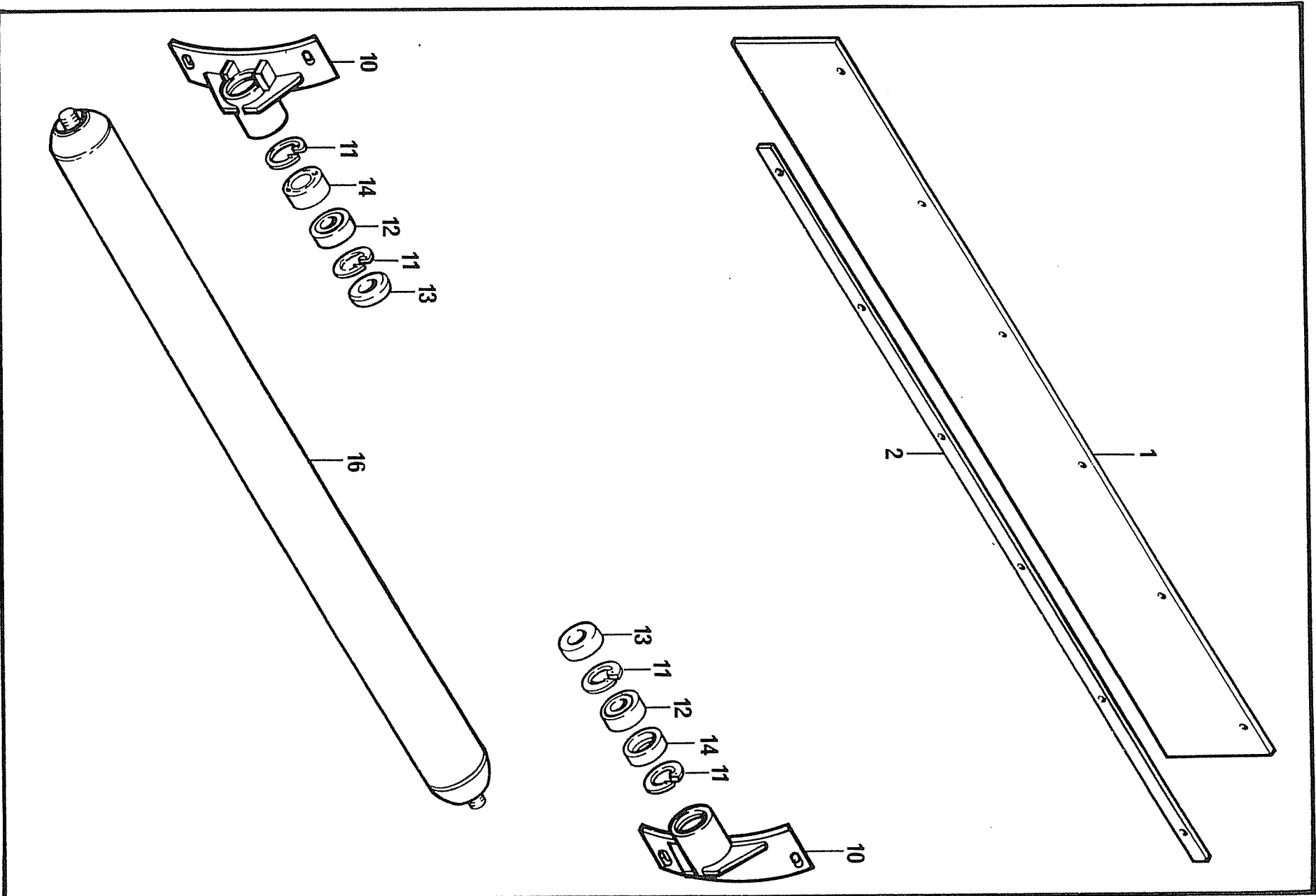
0389

71.512.03

**DECALS
SCIMITAR. 27**

REF	PART NO.	DESCRIPTION	QTY	SERIAL NO. FROM - TO
*01	07.696.01	DECAL - SCIMITAR	1	
*02	05.349.01	DECAL - IMPORTANT (NUTS TIGHT)	1	
*03	02.949.01	DECAL - LIFTING SYMBOL	4	
*04	06.007.03	DECAL - WEIGHT 500KG	1	
*05	07.697.01	DECAL - STRIPE	2	
*06	06.958.02	DECAL - BOMFORD	2	

*MAIN PART IN GROUP, RELATED PARTS HAVE SAME REFERENCE NUMBER.



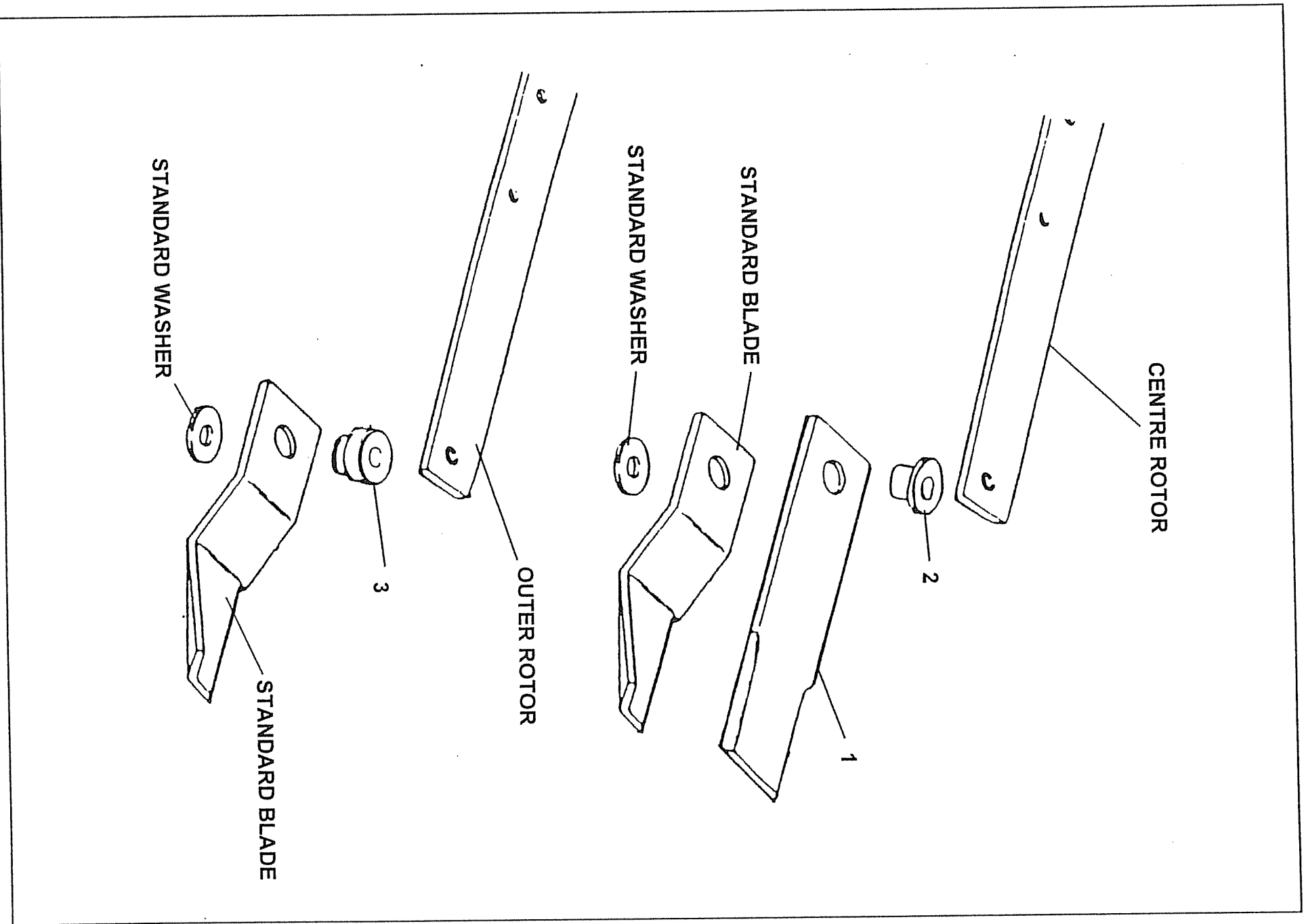
914

OPTIONAL EXTRAS - SCIMITAR 27

1187

REF	PART NO.	DESCRIPTION	QTY	SERIAL NO. FROM - TO
<u>71.606.01</u> FRONT GUARD KIT				
*01	06.842.02	GUARD - VELBEX 2832MM	1	
*02	06.843.02	STRIP - BACKING 2832MM	1	
02	05.264.02	SETSCREW M8 X 25MM PLATED	16	
02	05.287.01	SELF - LOCKING NUT M8 PLATED	16	
<u>71.853.01</u> ROLLER KIT				
06	07.344.02	SCIMITAR 27 ROLLER PROD ASSY	-	(INC REF 10-16)
10	05.264.23	SETSCREW M12 X 30MM PLATED	8	
10	05.281.03	FLAT WASHER 12MM PLATED	8	
10	05.287.03	SELF-LOCKING NUT M12 PLATED	8	
*10	07.343.01	BRACKET - ROLLER	4	
*11	05.959.05	CIRCLIP - INT 62MM DIA	8	
*12	03.007.02	BEARING - BALL 30MM BORE	4	
*13	04.164.04	SEAL-LIP 40DIA X 10MM	4	
*14	04.394.01	FLANGE-BEARING RETAINER	4	
14	05.953.01	GREASE NIPPLE M6	8	
15	05.234.01	WASHER 1.3/4" X 17/32" X 3/16"	4	
15	05.264.23	SETSCREW M12 X 30MM PLATED	4	
15	05.282.03	SPRING WASHER 12MM PLATED	4	
*16	04.388.06	ROLLER 114 DIA X 2700	2	

* MAIN PART IN GROUP, RELATED PARTS HAVE SAME REFERENCE NUMBER.



Ref	Part No.	Description	Qty
76.148.01		Overlap Knife Kit	
*01	09.882.01	Knife, Straight, 50 x 250	2
*02	06.237.03	Collar, 16.5 I/D x 25	2
02	05.839.23	Bolt, M16 x 65 Grade 10.9 Pit	2
02	05.948.17	Self Locking Nut M16, Grade 10 Pit	2
*03	06.237.04	Collar 16.5 I/D x 24	4
03	05.839.23	Bolt, M16 x 65 Grade 10.9 Pit	4
03	05.948.17	Self Locking Nut M16, Grade 10 Pit	4

FITTING INSTRUCTIONS

1. Remove all blades/collars etc. from rotor bars.
2. Using new bolts and collars refit the blades and washers with the straight blades on top of the cranked blades on the centre rotor.
3. Ensure bolts are tight and that when the blade bars align no blades clash.