

IM1849

# ***SABRE***

ROTARY TOPPERS

***INCLUDING REPLACEMENT PARTS INFORMATION***

ISSUE2

## IMPORTANT

NOTE HERE THE SERIAL NUMBER OF YOUR MACHINE AND ALWAYS QUOTE IT IN ANY COMMUNICATION WITH US OR YOUR DEALER. THIS IS PARTICULARLY IMPORTANT WHEN ORDERING SPARES. REMEMBER TO INCLUDE ALL NUMBERS AND LETTERS.

MACHINE SERIAL NUMBERS \_\_\_\_\_

THE INFORMATION GIVEN THROUGHOUT THIS MANUAL IS CORRECT AT THE TIME OF PUBLICATION. HOWEVER, IN THE COURSE OF CONSTANT DEVELOPMENT OF BOMFORD TURNER MACHINES, CHANGES IN SPECIFICATION ARE INEVITABLE. SHOULD YOU FIND THE INFORMATION GIVEN IN THIS BOOK TO BE AT VARIANCE WITH THE MACHINE IN YOUR POSSESSION, YOU ARE ADVISED TO CONTACT THE BOMFORD TURNER SERVICE DEPARTMENT WHERE UP-TO-DATE INFORMATION WILL BE PROVIDED.

THE MANUAL CAN CONTAIN STANDARD AND OPTIONAL FEATURES AND IS NOT TO BE USED AS A MACHINE SPECIFICATION.

THE MACHINE HAS BEEN TESTED AND IS CONSIDERED SAFE IF CAREFULLY USED. ENSURE YOUR OPERATOR IS PROPERLY TRAINED IN ITS USE AND MAINTENANCE.

---

## IMPORTANT

NOTEZ ICI LES NUMEROS DE SERIE DE VOTRE MACHINE ET MENTIONNEZ LES DANS TOUTE COMMUNICATION AVEC NOS SERVICES OU VOTRE REVENDEUR. CECI EST IMPORTANT POUR LA COMMANDE DE PIECES DETACHEES. PENSEZ A NOTER TOUS LES NUMEROS ET TOUTES LES LETTERS.

NUMEROS DE SERIE DE LA MACHINE \_\_\_\_\_

LES INFORMATIONS DONNEES DANS CE MANUEL SONT CORRECTES CEPENDANT, DU FAIT DE DEVELOPPEMENT CONSTANT DES MACHINES BOMFORD TURNER.

CHANGEMENTS DANS LES CARACTERISTIQUES SONT INEVITABLES.

SI VOUS TROUVEZ QUE LES INFORMATIONS DONNEES NE CORRESPONDENT PAS A VOTRE MACHINE VEUILLEZ CONTACTER LE SERVICE DES REPARATIONS OU DES INFORMATIONS PLUS RECENTES VOUS SERONT DONNEES.

CE MANUEL PEUT MONTRER DES CARACTERISTIQUES OPTIONNELLES ET NE PEUT PAS ETRE CONSIDERE COMME SPECIFICATION DE LA MACHINE.

CETTE MACHINE A ETE TESTEE, ET ELLE EST CONSIDEREE COMME FIABLE A CONDITION D'UNE BONNE UTILISATION. ASSUREZ-VOUS QUE VOTRE OPERATEUR EST QUALIFIE EN CE QUI CONCERNE L'UTILISATION DE LA MACHINE AINSI QUE SON ENTRETIEN.

---

## WICHTIG

TRAGEN SIE HIER DIE SERIENNUMMERN IHRER MASCHINE EIN UND GEBEN SIE DIESE IMMER AN, WENN SIE SICH AN UNS ODER IHREN HÄNDLER WENDEN. DAS IST BESONDERS BEI ERSATZTEILBESTELLUNGEN WICHTIG. VERGESSEN SIE NICHT, ALLE ZAHLEN UND BUCHSTABEN ZU NOTIEREN.

SERIENNUMMERN DER MASCHINE \_\_\_\_\_

DIE ANGABEN IN DIESEM HANDBUCH SIND BEI VERÖFFENTLICHUNG KORREKT. AUFGRUND DER KONSTANTEN WEITERENTWICKLUNG VON BOMFORD TURNER MASCHINEN SIND JEDOCHÄNDERUGDEN IN DER SPEZIFIKATION UNVERMEIDLICH. WENN DIE INFORMATION IN DIESEM HANDBUCH NICHT MIT IHRER MASCHINE ÜBEREINSTIMMEN, NEHMEN SIE BITTE KONTAKT MIT DER BOMFORD TURNER KUNDENDIENSTABTEILUNG AUF, DIE IHNEN GERNE DIE AKTUELLEN INFORMATION ZUKOMMEN LÄSST.

DAS HANDBUCH KANN SOWOHL BESCHREIBUNGEN FÜR DIE STANDARD AUSFÜHRUNG ALS AUCH FÜR ZUBEHÖR ENTHALTEN UND IST NICHT ALS MASCHINENSPEZIFIKATION ZU VERWENDET.

DIE MASCHINE IST GETESTET UND BEI SACHGEMÄSSEM BETRIEB ALS SICHER BEFUNDEN WORDEN.

SORGEN SIE DAFÜR, DASS IHR BEDIENPERSONAL IN ANWENDUNG UND WARTUNG RICHTIG GESCHULT WIRD.

**THIS MANUAL IS TO BE HANDED TO THE CUSTOMER  
BEFORE THE MACHINE IS TO BE USED  
FOR THE FIRST TIME**

**BOMFORD TURNER  
PO BOX 18  
Salford Priors,  
Evesham,  
Worcestershire,  
WR11 5SW**

**TEL: (01789) 773383  
FAX: (01789) 773238**

All dimensions and capacities mentioned in this book are approximate. In pursuance of the Companies policy of constant development, the right is reserved to depart, without notice, from any detail illustrated or specified in this book, without incurring the obligation to provide such modifications on machines previously delivered.

No responsibility will be accepted by Bomford Turner Ltd for any injury, damage or loss arising from the improper use or lack of maintenance of any machinery supplied by them or from any failure of the user to comply with all instructions published by Tractor or Loader manufacturers, particularly with regard to maximum load capacities, tyre pressures and stability, or with instructions and regulations pertaining to Tractor Cabs.

EC DECLARATION OF CONFORMITY  
conforming to EEC Directive 98/37/EC

We,

of BOMFORD TURNER LIMITED, PO Box 18, Salford Priors, Evesham,  
Worcestershire, WR11 5SW

declare that under our sole responsibility that the product (type)

LINKAGE MOUNTED ROTARY MOWER

Product Code: TOP9

Serial No. & Date: .....

Manufactured by the above Company/\* .....

.....

(\*insert business name and full address if not stated above)

complies with the required provisions of the Directive 98/37/EC and 89/336/EEC,  
AMD 92/31/EEC, AMD 93/68/EEC and conforms with European Norm. BS EN 292

- Part 1: 1991 Safety of Machinery - Terminology, Methodology
- Part 2: 1991 Safety of Machinery - Technical Specifications

and other national standards associated with its design and construction as listed in the Technical File.

Signed Adrian Longstaff  
on behalf of BOMFORD TURNER LIMITED Responsible Person

Status DIRECTOR OF ENGINEERING

Date 20h April 2001

INDEX

FLY SHEET	1
HEADER SHEET	2
INDEX	3
SPECIFICATION	4
GENERAL INFORMATION	5
SAFETY NOTES AND WARNINGS	6
ABOUT THIS MACHINE	7
HEALTH AND SAFETY	8
" " "	9
" " "	10
" " "	11
NOTES	12
GENERAL INSTRUCTIONS	13
" "	14
INTRODUCTION	15
OPERATING INSTRUCTIONS	16
" " CONTINUED	17
ATTACHING TO TRACTOR	18
" " " CONTINUED	19
BELT TENSIONERS AND MOWING HINTS	20
GENERAL MAINTENANCE	21
" " CONTINUED	22
ROUTINE MAINTENANCE AND LAYING-UP	23
" " " " "	24
HANDLING AND TRANSPORTATION	25
PARTS LIST PAGE	26
MAIN FRAME 7FT MODEL	27
" " " " DRAWING	28
PRIMARY DRIVE 7FT MODEL	29
" " " " DRAWING	30
SECONDARY DRIVE 7FT MODEL	31
" " " " DRAWING	32
MAIN FRAME 9FT MODEL	33
" " " " DRAWING	34
PRIMARY DRIVE 9FT MODEL	35
" " " " DRAWING	36
SECONDARY DRIVE 9FT MODEL	37
" " " " DRAWING	38
DECALS – SAFETY & MARKETING	39
DECALS _ ILLUSTRATIONS	40

## TOPPER SPECIFICATION

### 2.1M (7FT) TOPPER

Height (Inc. Headstock)	1.15m (1ft 7")
Width of Cut	2.1m (7ft)
Depth	1.7m (5ft 6")
Weight	330 Kgs (728 lbs)
Power required (Min-Max)	25-60 kW (35-80 HP)
P.T.O Input Speed (RPM)	540
Drives - 1 Primary Drive - 1 Secondary Drive	

### 2.72M (9FT) TOPPER

Height (Inc. Headstock)	1.15m (1ft 7")
Width of Cut	2.72m (9ft)
Depth	1.7m (5ft 6")
Weight	480 Kgs (1058 lbs)
Power required (Min-Max)	30-60 kW (40-80 HP)
P.T.O Input Speed (RPM)	540
Drives - 1 Primary Drive - 2 Secondary Drive	

### AIRBORNE NOISE EMISSIONS

The equivalent continuous A weighted sound pressure level at the workstation (tractor seat) is 74 dB(A). This value was achieved cutting grass using a Dawe 1405C sound meter (BS3489) on a 3090 Massey Ferguson Tractor complete with safety cab.

NOTE:-      DIMENSIONS APPROX. ONLY

## GENERAL INFORMATION

NOTE:- The provision of this information is a requirement of the Health & Safety at Work Act 1974.

NOTE:- This handbook has been designed to help the operator and service/mechanic to use and understand the machine fully, safely and efficiently, bearing in mind the Health & Safety requirements and the new CE requirements, which come into force from January 1st 1995.

NOTE:- The cover of the handbook will include its own part number, which includes information as to machine type and issue date of manual in question.

### DANGER

NOTE:- It is very important that the handbook/manual has been read thoroughly - throughout, and is completely understood before attempting to attach or use machine in any way.

CAUTION: When ordering spares, please state clearly:-

- (a) Machine type and model No.
- (b) Part No. of component.
- (c) Description of component.
- (d) Quantity required.
- (e) Full address to which spares are to be sent.
- (f) Method of delivery required.

CAUTION:- Always insist on genuine and correct spare parts.

NOTE:- Further copies of this handbook/manual can be obtained from:-

BOMFORD TURNER LIMITED  
PO BOX 18  
SALFORD PRIORS  
EVESHAM  
WORCESTERSHIRE  
WR11 5SW

TEL: 01789 773383  
FAX: 01789 773238

## SAFETY NOTES AND WARNINGS

Throughout the handbook the following sub headings are used to draw attention to various points of importance.



DANGER  
WARNING

This is to draw attention to very important instructions that MUST be followed precisely to avoid injury or death.

### CAUTION

This is used to draw attention to instructions that MUST be followed to avoid damage to operator, machine, process or the environment.

### NOTE:-

This is used to highlight points used for supplementary information.



## ABOUT THIS MACHINE

This machine is known as the Rotary Topper.

It is intended to be attached to an agricultural vehicle by means of the "three-point-linkage" couple-up system. There are two models of Rotary Topper, the 7ft and the 9ft model.

The purpose for its production and its sole intention is to cut/clear - grass, thistles, nettles bracken and stubble.

AT NO TIME must this machine be used for anything other than, or to do any job - other than that for which it has been designed (see note above).

## HEALTH AND SAFETY



DANGER  
WARNING

Never attempt to assemble, couple up, or operate machinery until you understand fully the functions, controls and safety precautions required, as shown in the operators manual.



DANGER  
WARNING

Always follow tractor safety operations and instructions VERY carefully.  
NEVER TAKE RISKS

### CAUTION.

Be aware of warning stickers and instruction stickers on machine as care must be taken and instructions obeyed.

### CAUTION

Contact your dealer should you need advice, assistance, or if you do not understand the manual or machine. "NEVER ASSUME" - if not sure - ASK.

### CAUTION

Machine MUST NOT be altered or modified in any way - without permission - No liability will be accepted in respect of a machine that has been modified without manufacturers permission.



DANGER  
WARNING

Never drive machinery at speeds that could cause danger to other persons or properties, or in a manner that may cause accidents.



DANGER

## WARNING

Never attempt to Service/adjust or work on any machinery in an unsupported state.

For Example:- Any three point linkage mounted machinery  
Front Loaders  
Digger Booms  
Hedgetrimmer booms etc. etc.

Always ensure that machinery is safely supported and propped in position.

## CAUTION

Always "SWITCH-OFF" tractor engine before attempting to carry out adjustment or service repairs and inspections, on machinery.



DANGER  
WARNING

Always be aware of your surroundings - and operate machinery accordingly.  
Beware of confined-tight areas, low height restrictions, buildings and overhangs etc.  
Also drive and operate bearing in mind weather conditions such as sun, rain, ice, snow, wind etc. [Make allowances in all situations].

## CAUTION

Never carry "passengers" on machinery or on tractor.  
Ensure bystanders/onlookers are kept well away from operational area of apparatus.

## CAUTION

### 'PARKING UP' MACHINE

When machine is being removed from tractor linkage and being 'parked up' it is essential that a good firm base and level site be found.

Always chock and prop machine to ensure a good firm position to leave parked.  
Ensure that stand legs of machine are correctly locked into position.

## CAUTION

Never allow children to play on, or around, parked machinery.

CAUTION

Never wear loose fitting or ragged clothing that could get caught in machinery or controls.

CAUTION

Ensure visibility is clear through cab-screens at all times.

CAUTION

Always dispose of discarded or worn out parts thoughtfully - by disposing of them in an approved and specified legal scrap site, bin or skip.

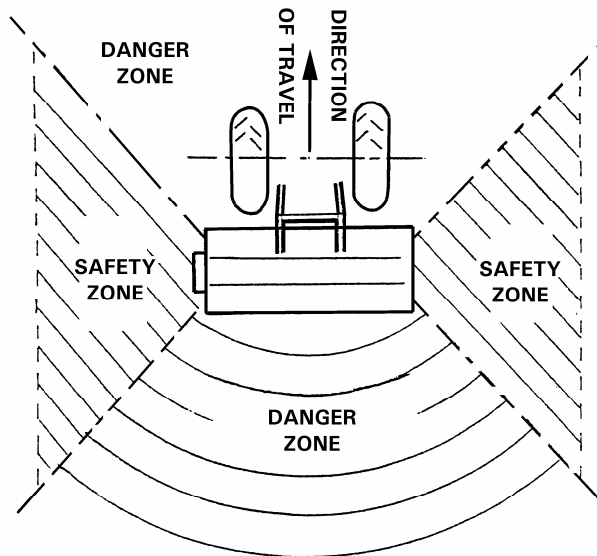
CAUTION

Worn out and spent waste oil, grease and other obnoxious substances must always be disposed of in suitable and legally approved dumping containers suitable for the waste in question.



DANGER  
WARNING

Never allow onlookers/bystanders to stand in front or behind the machine. The danger zones are marked on the sketch below.



DANGER  
WARNING

For tractors fitted with hydraulic clutch, an over-run coupling must be fitted to the P.T.O. shaft. The manufacturer cannot accept responsibility for any damage or injury caused by failure to apply this precaution.



DANGER  
WARNING

Do not operate along highways and use extra caution on rough terrain or where rocks and debris are present.



DANGER  
WARNING

Stop P.T.O before dismounting tractor and always keep P.T.O and Topper guards secure and in position.



DANGER  
WARNING

Maximum tractor P.T.O operating speed 540 rpm.



DANGER  
WARNING

When fitting P.T.O shaft over-run clutch, make sure it is on the Topper side.

NOTES

AMENDMENT

DATE

DETAILS

GENERAL INSTRUCTIONS

## DANGER

## WARNING

1. Before attaching any machine to a tractor or loader make sure that implement is still standing firmly on good solid - level site as it will be, providing unit was previously parked correctly.  
-Check that any wheels are 'chocked' correctly and that supports/props are in position where necessary to prevent booms etc. dropping.
2. Before and during the manoeuvring of the tractor or vehicle in order to attach machinery/implements, - make sure that No other persons are in the vicinity. Keep other persons well clear and make known your intentions, all the while keeping a sharp lookout whilst reversing and aligning machines for coupling up.
3. Always secure tractor into selected position by ensuring that brakes are applied correctly in order to prevent vehicle moving off on its own to cause injury and damage.
4. Make sure that the lift arms and top link ball ends of the tractor are properly fitted to the machine/implement by using correct adapter sleeves where necessary, and that retaining pins of the correct type are used on all three point linkage points. Secure pins with relevant pin and ring assembly.
5. If the machine is of the drawbar type - check that the hitch on the tractor is in good condition and that the hitch pin used is of the correct size and type, and is properly secured when fitted.
6. Should it become necessary to make any adjustments or service on machine while raised on the tractor linkage, or raised on a front end loader - trestles or suitable supports MUST be positioned to support machine to prevent accidental dropping of lift arms, loader arms or mechanical failure.  
[MACHINE MUST ALWAYS BE PROPPED AND CHOCKED]

7. Never attempt to work on, adjust or service repair machinery of any kind whilst it is still running or working. Always stop the machine and **STOP THE TRACTOR ENGINE** - before any service/repairs begin.  
(**SWITCH OFF TRACTOR ENGINE BEFORE LEAVING TRACTOR SEAT**)
  
8. In transit always use transport stays or locking devices where provided. If, as in the case of some longer machines, the unit is transported lengthways - make sure that the front of the tractor is suitably ballasted to maintain stability.  
A method of achieving this would be to add suitable weights to a correctly specified and fitted front weight frame.
  
9. Always use machines in a sensible and reasonable manner and do not attempt to use them in work for which they are not intended. Avoid overloading and abusing them as this can cause damage to machine and tractor and can be very dangerous.
  
10. When unhitching/detaching a machine from a tractor three point linkage or from a front end loader ensure that any stands or legs are securely positioned and that the machine is parked where it will not be a safety hazard or cause annoyance to others.  
Make sure that chose 'parking site' is a firm and level site.
  
11. Carry out regular periodic maintenance. - Always with safety in mind.
  
12. Ensure regular maintenance procedures are maintained for the lifetime of the machine.
  
13. **HEALTH AND SAFETY RULES AND REGULATIONS MUST BE ADHERED TO IN ALL AGRICULTURAL RESPECTS.**

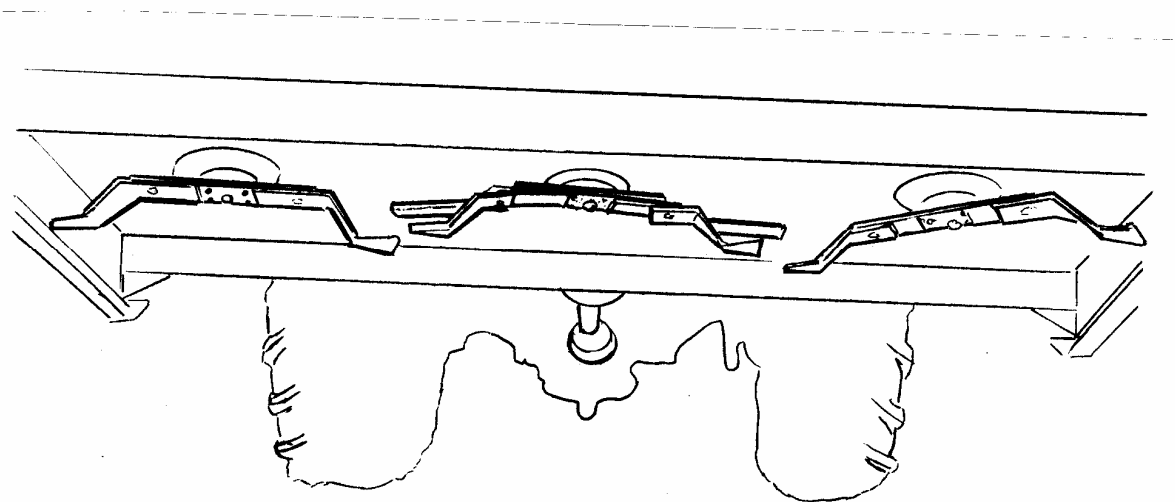
- - - \* - - -



## INTRODUCTION

NOTE The Rotary Topper is a robust versatile tractor mounted machine suitable for all types of ground clearance, e.g. grass, thistle, nettles, bracken, rushes, stubble, etc. Two widths are available 2.13m (7ft) and 2.72m (9ft), all are P.T.O powered and operate at 540 rpm (max tractor P.T.O speed).

CAUTION Overlapping rotary, flail swingback blades are fitted to all models to prevent 'striping' during use. Shear bolts are fitted in blade carriers to protect the carriers and blades against major damage caused by stones etc. The cutting height is adjustable to suit various applications.



2.72m (9ft) Illustrated

## OPERATING INSTRUCTIONS

**CAUTION:** Pre-set height of lift on the tractor three point linkage to ensure that the chain and top link attachment of Rotary Topper does not foul tractor cab.

### P.T.O SHAFT LENGTH

- (a) The P.T.O Shaft length may be altered to suit individual tractor models. During operation the P.T.O shaft should have 1/3 engagement as shown below.
- (b) The P.T.O shaft is equipped with a shear bolt facility and must be fitted at the Topper end on shaft, NOT at tractor end.

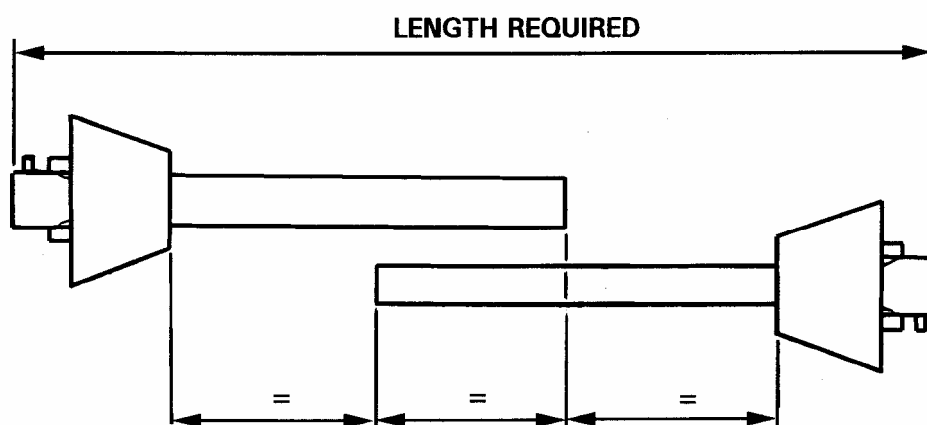


Fig. 3 Correct Engagement



DANGER  
WARNING

- (c) When lifting Rotary Topper, ensure that P.T.O shaft does not foul, see Fig. 4. To prevent this, set the hydraulic stop to a safe height or shorten top link. Manufacturers cannot be held responsible for damage to the P.T.O. caused by failure to apply these precautions.

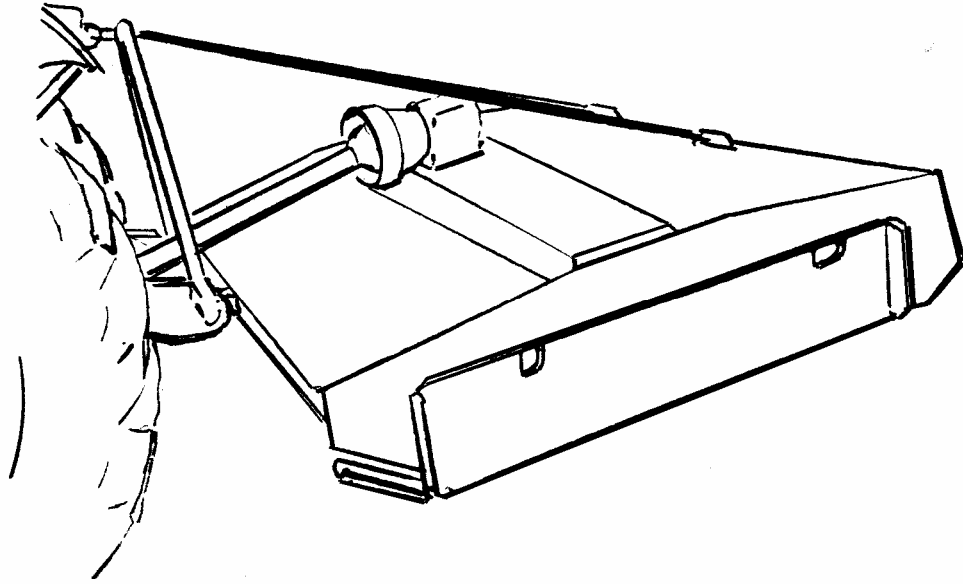


Fig. 4 P.T.O Shaft Setting Height

### ATTACHING TO TRACTOR

- (a) Fit Rotary Topper to the tractor's hydraulic three-point linkage in the normal way. If possible use right hand and left hand stay bars or check chains. While in operating position, adjust top link until rear support straps are slack as illustrated in Fig. 5.

IMPORTANT NOTE:-

P.T.O Shaft to have shear bolt at Topper end.

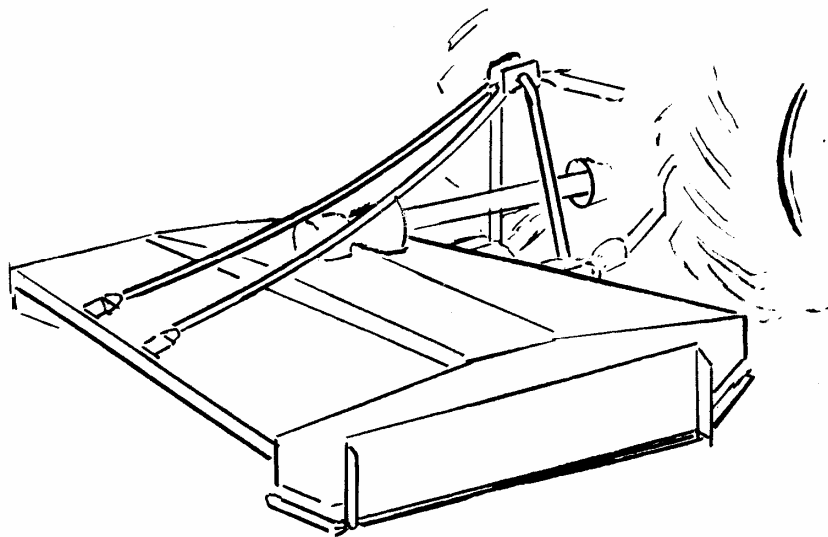


FIG. 5 Support Straps

CAUTION

- (b) Cutting height should be set as required by adjusting the side skids. These are held in place by four bolts on each side to the Rotary Topper main frame assembly. After adjusting, ensure that all bolts are replaced and secured.

Ensure the skids are not set too low as stone etc. could damage blades. See Fig. 6.

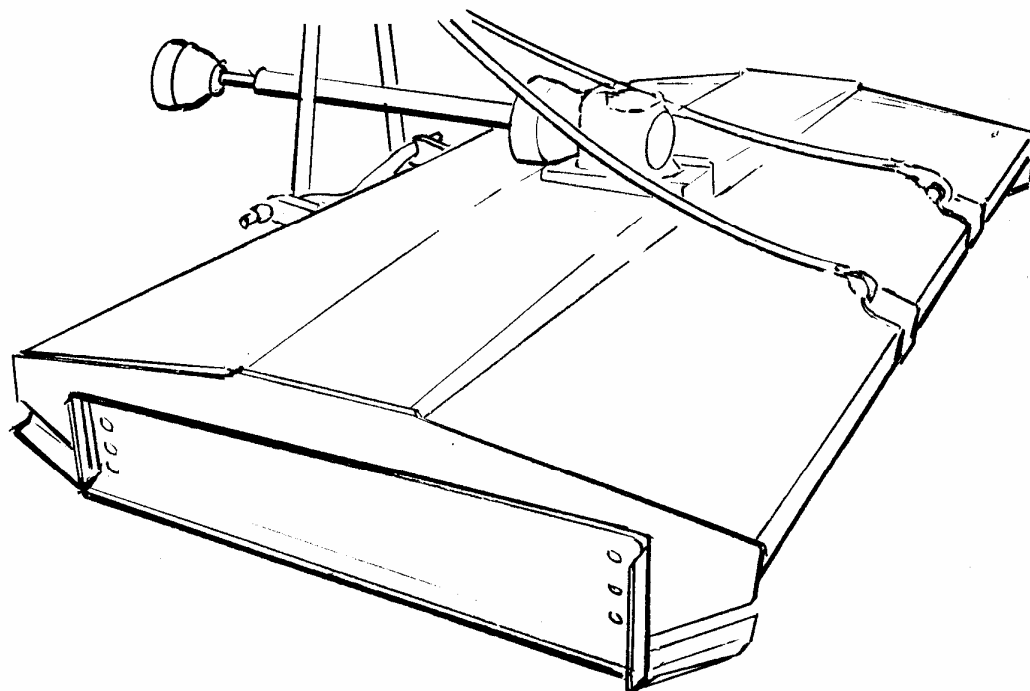


FIG. 6 Adjustable Side Skids

**CAUTION**

**NOTE:**

When replacing skid adjustment bolts, ensure threaded portion is on the outside. If bolts are placed with threaded portion facing the blades damage to the thread may result and hinder future adjustment and interrupt crop flow.

**CAUTION**

Belt Drive from the P.T.O shaft/gearbox on the offset model can be tightened by moving the gearbox and its pulley forward. The gearbox retaining screws and adjuster are located on top of the gearbox snout.

**CAUTION**

To remove the belts, release tension on main pulleys and if necessary take out the idler pulley and belt retainer. Access is obtained by first removing the top covers.

**WARNING**

**BEFORE ADJUSTING BELTS DISCONNECT P.T.O**

## BELT TENSIONERS

CAUTION Drive from the centre pulley or main drive pulley to the outside rotary blades pulley can be tightened by removing the top cover/s, slackening the idler pulley adjuster bolt, then retighten to selected position.

CAUTION NOTE The belts should not be slack enough to touch the trough 63.mm (2 1/2") and the angle section belt guide situated over the idler pulley MUST be free of belt by minimum of 2mm.

## MOWING HINTS

CAUTION (a) ROUGH STUBBLE : Sharpen blades, cut lower if possible.

CAUTION (b) VERY UNDULATING GROUND : Lengthen top link giving support straps more slack. Also increase cutting height. (See Fig. 6).

CAUTION (c) RUSHES : For 'Old Man' rushes etc, use high rotary cutter speed or 540 rpm and 3-6 mph tractor speed (Forward).

CAUTION (d) TOPPING : Forward speed up to 15 mph max. depending on field conditions. Low P.T.O speed, 300-400 rpm. Adjust skid height to suit application.

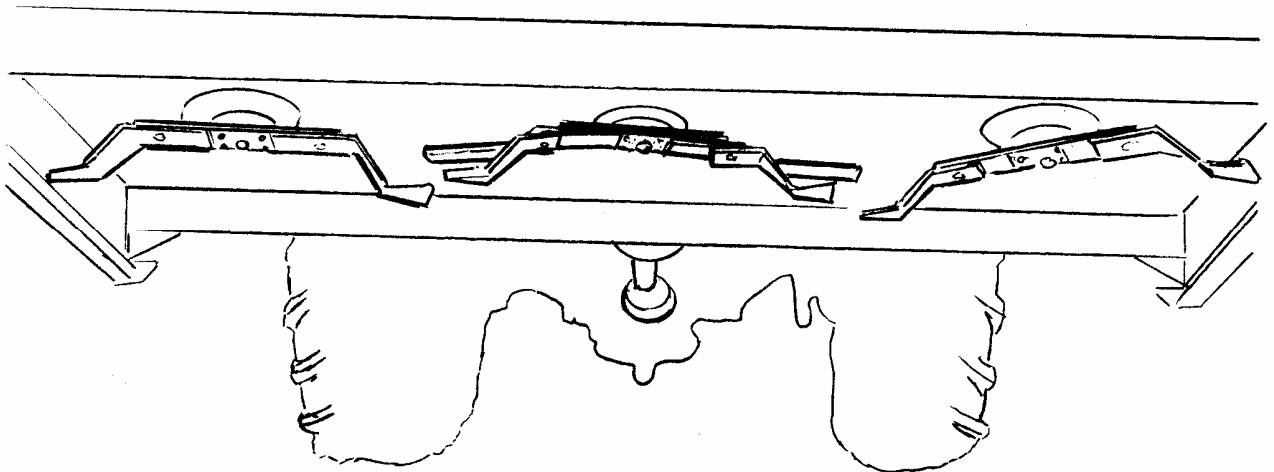
## GENERAL MAINTENANCE

### BLADES, SHEAR BOLTS AND CENTRE SHEAR STUDS

- (a) Check blades for sharpness daily.  
Renew damaged blades and damaged or broken shear bolts and centre bolt.

- (b) To remove Carrier:-

Remove P.T.O Drive Shaft from Tractor, wedge the faulty blade carrier securely with a piece of timber and undo the main centre nut and the 4 - M8 Shear Bolts. (Ref. Fig.9.)



- (c) Bolts:-

To renew Blades and Bolts, loosen the blade retaining bolt/nut remove blade and spacer, re-assemble new blade and spacer. Tighten blade centre bolts and blade.

Check tightness of blade bolts after first and second hours of use then every 40 hours.

- (e) Fitting New Blades

- CAUTION (i) Locate new blade to appropriate hardened steel pivot bush and position onto blade carrier, - secure with nut and bolt.
- CAUTION (ii) Rotate the new blade by hand and if it makes contact with another blade, remove excess from the new blade using a grindstone until blades rotate without touching. See Fig. 10.

NOTE Space between blade ends should be 25mm

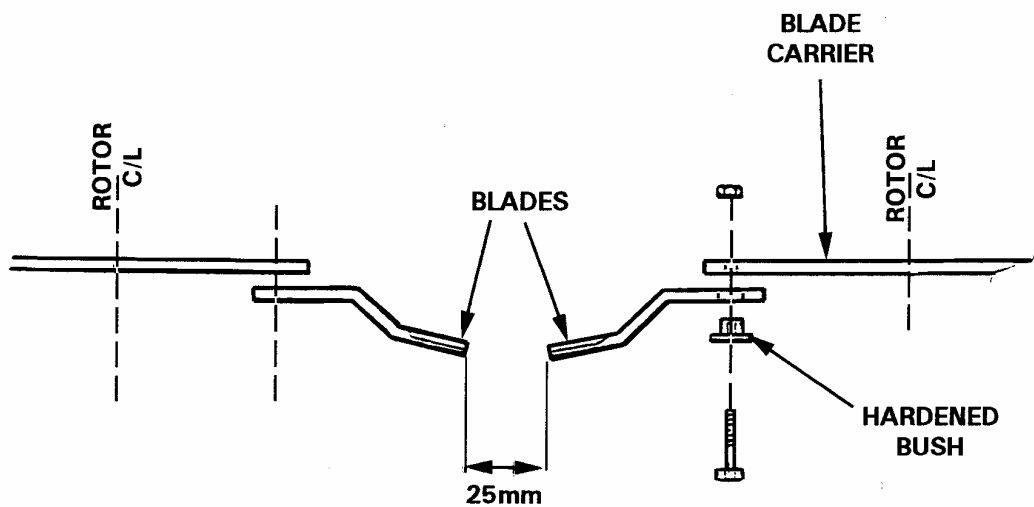


FIG. 10.

NOTE After assembly of new blades check all nuts and bolts for tightness after first and second hours of use, then at intervals of 40 hours.

NOTE Always use correct size spanners for appropriate nuts etc.

### GEARBOX

Capacity 1.7 litres  
Oil Type EP90

### ROUTINE MAINTENANCE AND LAYING-UP



DAILYCAUTION

Check level of oil in the gearbox (also on delivery) Use EP90 Oil.

CAUTION

Check the V Belt for tightness (see section 4 and 6).



DANGER  
WARNING

Check P.T.O Shaft guard nuts and secure.

NOTE All bearing housings are fitted with double seal bearings (top and bottom) and are non-greaseable. The centre being packed with grease on initial build at factory, purely to prevent centre shaft rusting.

CAUTION

Check blades for sharpness. Sharpen with a grindstone if necessary.

CAUTION

P.T.O shaft joints, tubes and guard should be greased every 40 hours.

CAUTION

Oil all pivot and support pins every 10 hours.

WEEKLYCAUTION

Check all nuts and bolts for tightness, ensure blades are kept in a sharpened condition and are free to rotate without fouling.

CAUTION

Check V Belts for wear.

### LAYING-UP

#### NOTE

Clean the machine and note any damage or repairs needed.

#### NOTE

Remove tension from drive belts.

#### NOTE

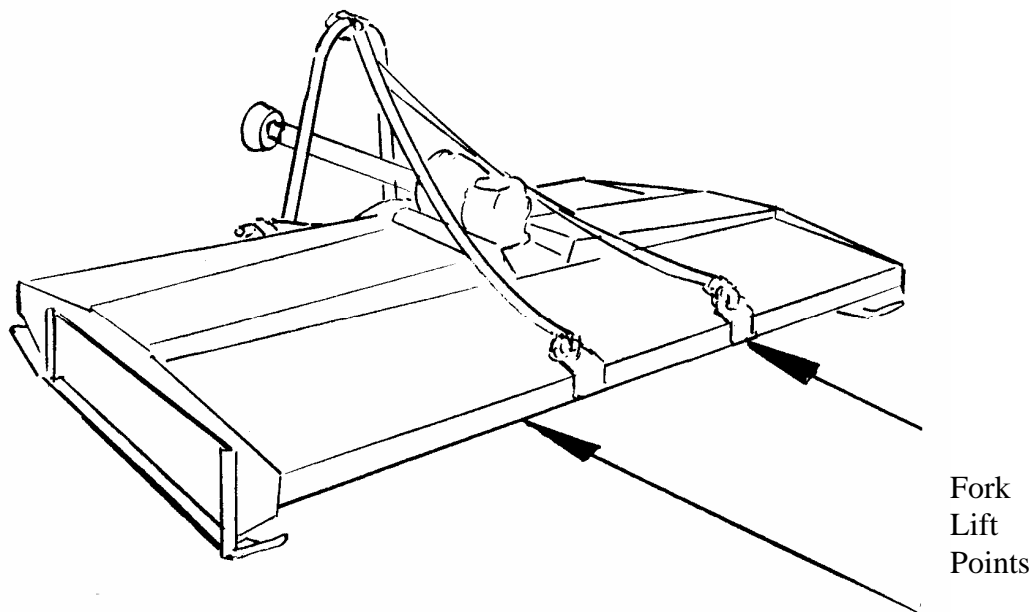
Fully lubricate the machine.

#### NOTE

Store the machine in dry conditions under cover.

## HANDLING AND TRANSPORTATION OF MACHINERY

The picture highlighted below indicates safe lifting points for the machinery.



The unladen weight of each Trimmer is given in the specification sheet of this book.

A form of lifting gear is required in order to move or handle this machinery safely. The lifting should be at points indicated.

Once the machinery has been moved, ensure that it comes to rest in a safe position. Supports or stay bars may be necessary to ensure stability of the machinery. Make sure the supports/stay bars are used whenever the machinery is transported.



## PARTS LIST

Always order genuine Bomford Turner spares for your machine. They are correctly designed to give the best operational results.

When ordering spare parts, please specify:-

Type and Serial Number of machine

Part number, description and quantity of spares required.

Always make sure that you have ordered a sufficient quantity to complete the job.

Always make sure that you have ordered the correct parts. In some instances (eg Hydraulic Rams) parts or assemblies are, in the course of time, modified due to introduction of new materials, or improved design.

Always state by what means you wish the goods to be sent. In the absence of specific instructions consignments will be sent by post or carrier service, if it is not possible to deliver by our own transport.

Always State the number of our Invoice or Sales Slip, and the reason for return should it become necessary to return any items for exchange or credit.

## WARRANTY AND SPARE PARTS

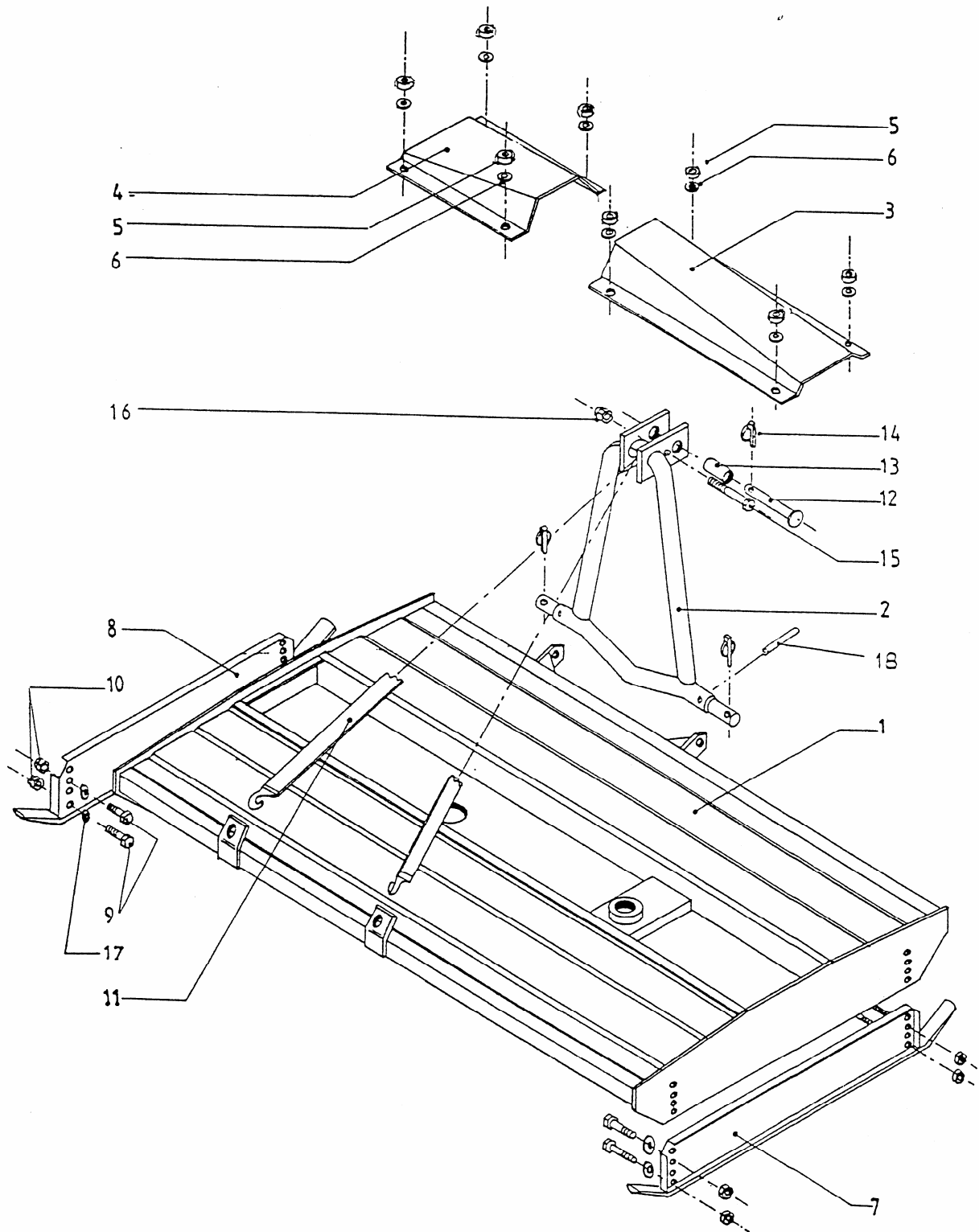
all enquiries regarding these machines and orders for spare parts must be addressed to:-

BOMFORD TURNER LIMITED  
PO BOX 18  
SALFORD PRIORS  
EVESHAM  
WORCESTERSHIRE  
WR11 5SW

TELEPHONE (01789) 773383  
FAX (01789) 773238

MAIN FRAME ASSEMBLY FOR 2.13M (7'0) MODEL

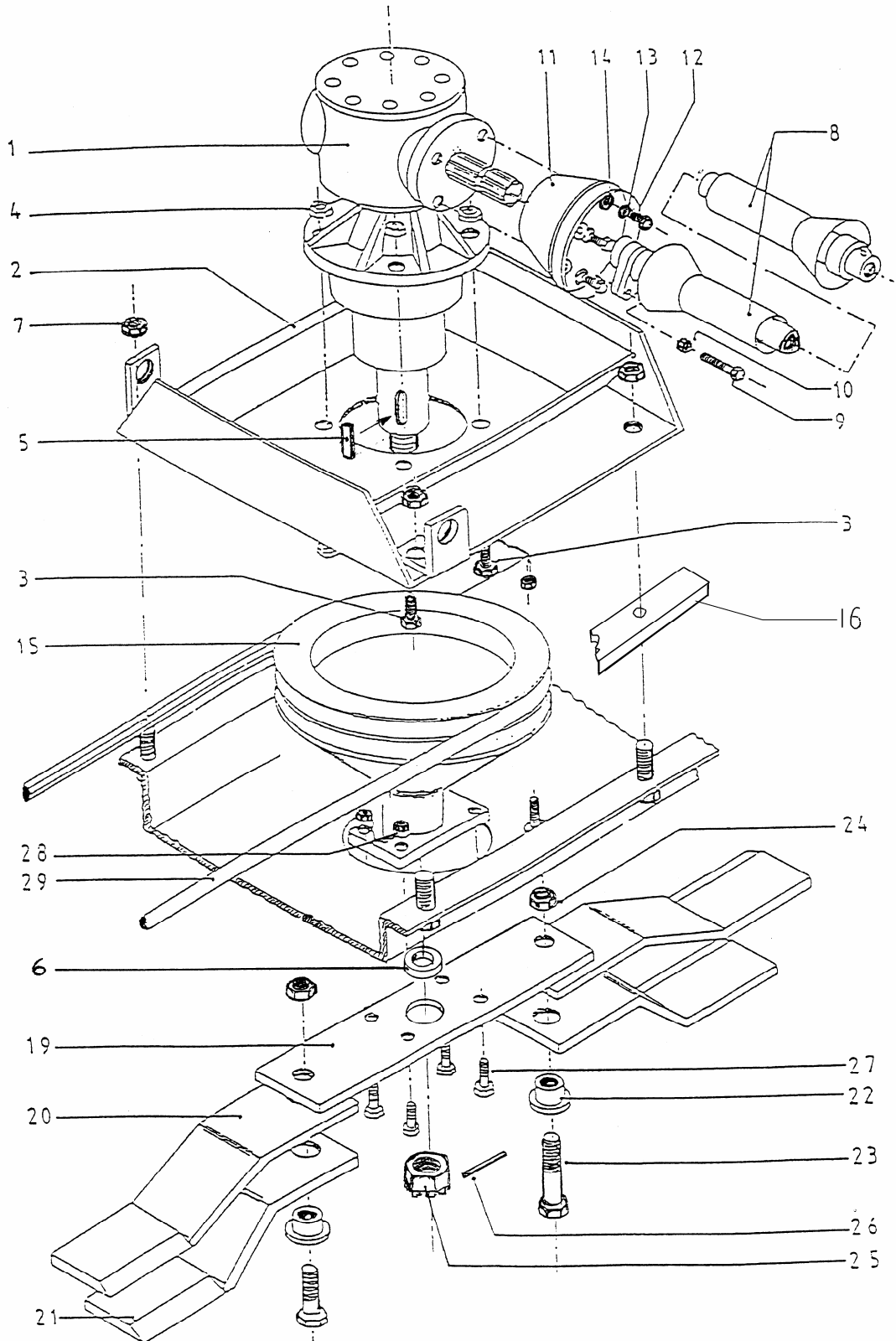
<u>ITEM</u>	<u>PART NO</u> <u>QTY</u>	<u>DESCRIPTION</u>	
1	172.291A	Body Assembly	1
2	172.204A	Headstock Assembly	1
3	172.037	Cover - Long	1
4	172.036	Cover - Short	1
5	4421	Stiff Nut M10 Nyloc	8
6	3332	Flat Washer M10	8
7	172.203	Skid	1
8	172.203	Skid	1
9	2748	Bolt M12 x 40 (8.8)	8
10	3082	Stiffnut M12	8
11	7033	Webbing Strap c/w Hooks	1
12	1657	Top Link Pin	1
13	190050	Conversion Bush	1
14	0832	7/16" Linch Pin & Ring	3
15	3856	Bolt M8 x 100 (8.8)	1
16	3182	M8 Stiffnut (Nyloc)	1
17	3192	M12 Flat Washer	8
18	3713	M6 x 50 Spring Pin	2



PRIMARY DRIVEPRIMARY DRIVE FOR 2.13M (7'0) MODEL

<u>ITEM</u>	<u>PART NO.</u>	<u>DESCRIPTION</u>	
	<u>QTY</u>		
1	8100	Gearbox	1
2	172.232	Gearbox Platform	1
3	2929	Bolt M16 x 45 (8.8)	4
4	3747	Stiffnut M16	4
5	05.960.22	Key	1
6	172.332	Spacer for carrier	1
7	3082	Stiffnut M12	4
8	7063	PTO Shaft c/w Shear Bolt	1
9	7092	Shear Bolt M8 x 50 (10.9)	1
10	2719	Stiffnut M8	1
11	6385	PTO Guard	1
12	4923	Setscrew	4
13	3001	Spring Washer M8	4
14	3111	Plain Washer M8	4
15	1720334	Pulley	1
16	173-333	Spacer	2
17			
18			
19	1720216	Blade Carrier (7'0)	1
20	1720219	Overlapping Blade	2
21	1720218A	Standard Blade	2
22	172.230	Spacer (Long)	2
23	2878	Bolt M16 x 55 (8.8)	2
24	3747	Stiffnut M16 (Nyloc)	2
25	8121	Nut M20 Castellated (1.5 pitch)	1
26	6351	Tension Pin 4 x 30	1
27	6393	Bolt M8 x 35 (8.8)	4
28	3182	Stiffnut M8	4
29	T7768	Drive Belt C115	1

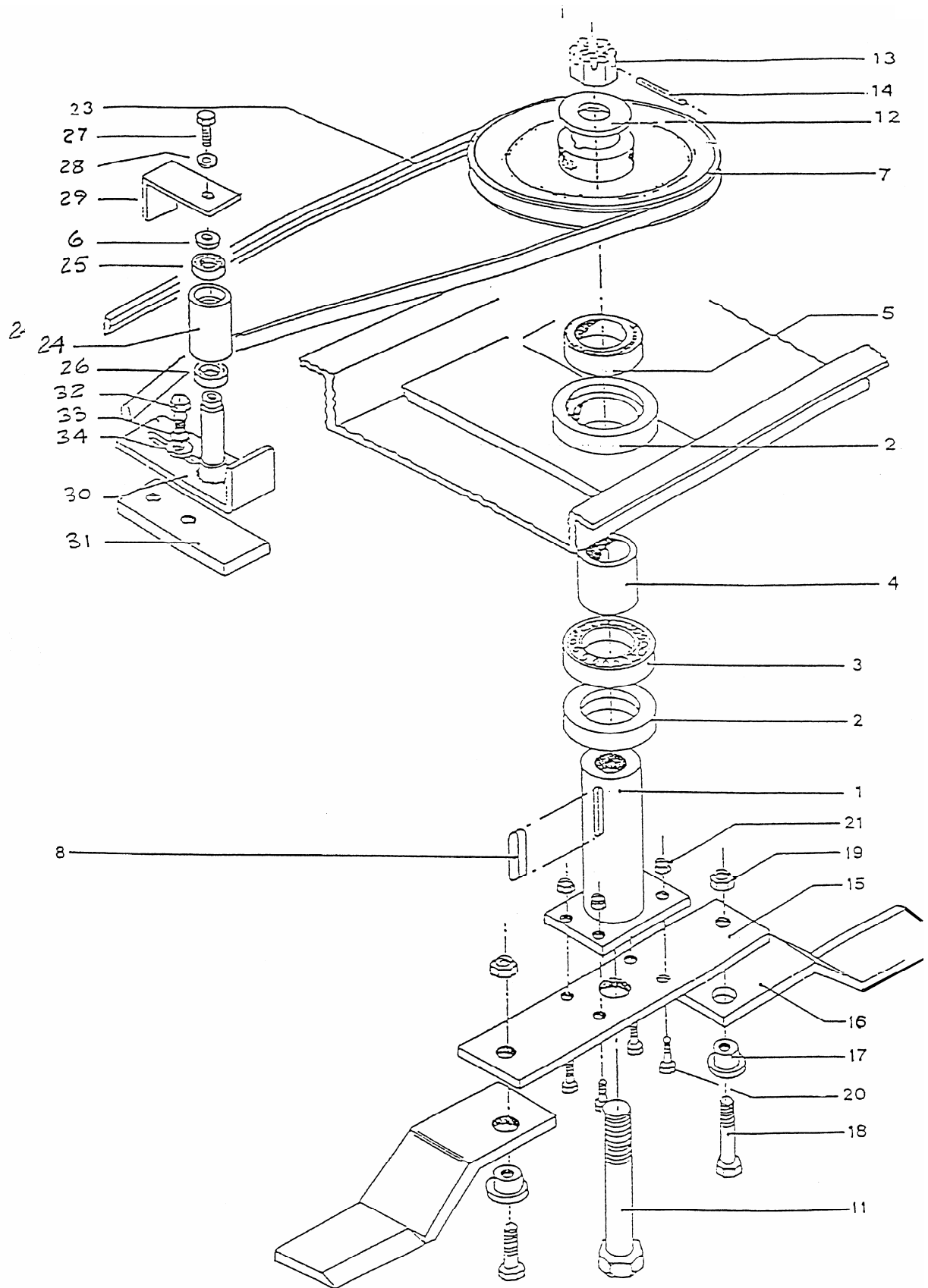




SECONDARY DRIVESECONDARY DRIVE FOR 2.13M (7'0) MODEL

<u>ITEM</u>	<u>PART NO.</u>	<u>DESCRIPTION</u>	
	<u>QTY</u>		
1	172.224	Rotor Shaft	1
2	172.223	Spacer Ring	1
3	7010	Bearing	1
4	172.222	Bearing Spacer	1
5	7009	Bearing	1
6	3192	M12 Flat Washer	1
7	172.290	Pulley	1
8	7062	Key 50 x 12 x 8 Feather	1
9			
10			
11	7036	M20 x 220 Bolt (8.8)	1
12	172.221	Washer - Special	1
13	3203	Slotted Nut M20	1
14	6351	Tension Pin O 4.0 x 30	1
15	1720216	Blade Carrier (7'0)	1
16	1720218A	Standard Blade	2
17	172.229	Spacer (Short)	2
18	2704	Bolt M16 x 50 (8.8)	2
19	3747	Stiffnut (Nyloc) M16	2
20	6393	M8 x 35 Bolt (8.8)	4
21	3182	M8 Stiffnut	4
22 *	1720201.9	Bearing Hub	1
23	7768	Drive Belt C115	1
24	172.287	Idler	1
25	7494	Bearing (6304)	1
26	2919	Bearing (6205)	1
27	2717	Setscrew M12 x 25	1
28	2729	Spring Washer M12	1
29	172.289	Belt Retaining Bracket	1
30	172.288	Idler Pulley Mounting Bracket	1
31	172.209	Clamp Plate	1
32	2901	Bolt M16 x 35 (8.8)	2
33	2730	Spring Washer M16	2
34	2867	Flat Washer M16	2

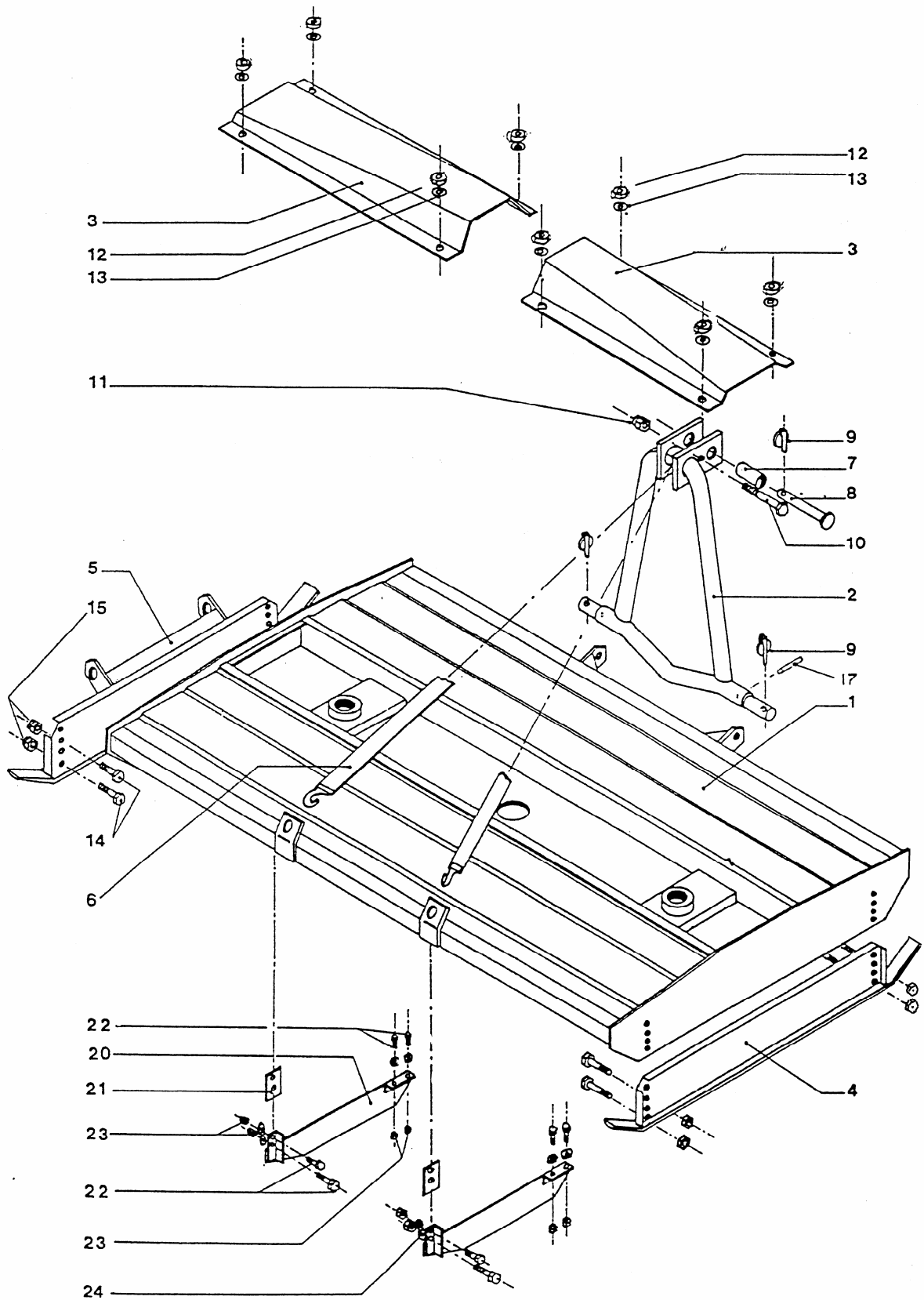
NOTE \* Bearing Hub - This item is welded onto the Main Frame Assembly and can only be replaced during a major overhaul/reconstruction of the Topper. It is not normally considered as a spare item.



MAIN FRAME ASSEMBLY FOR 2.72M (9'0) MODEL

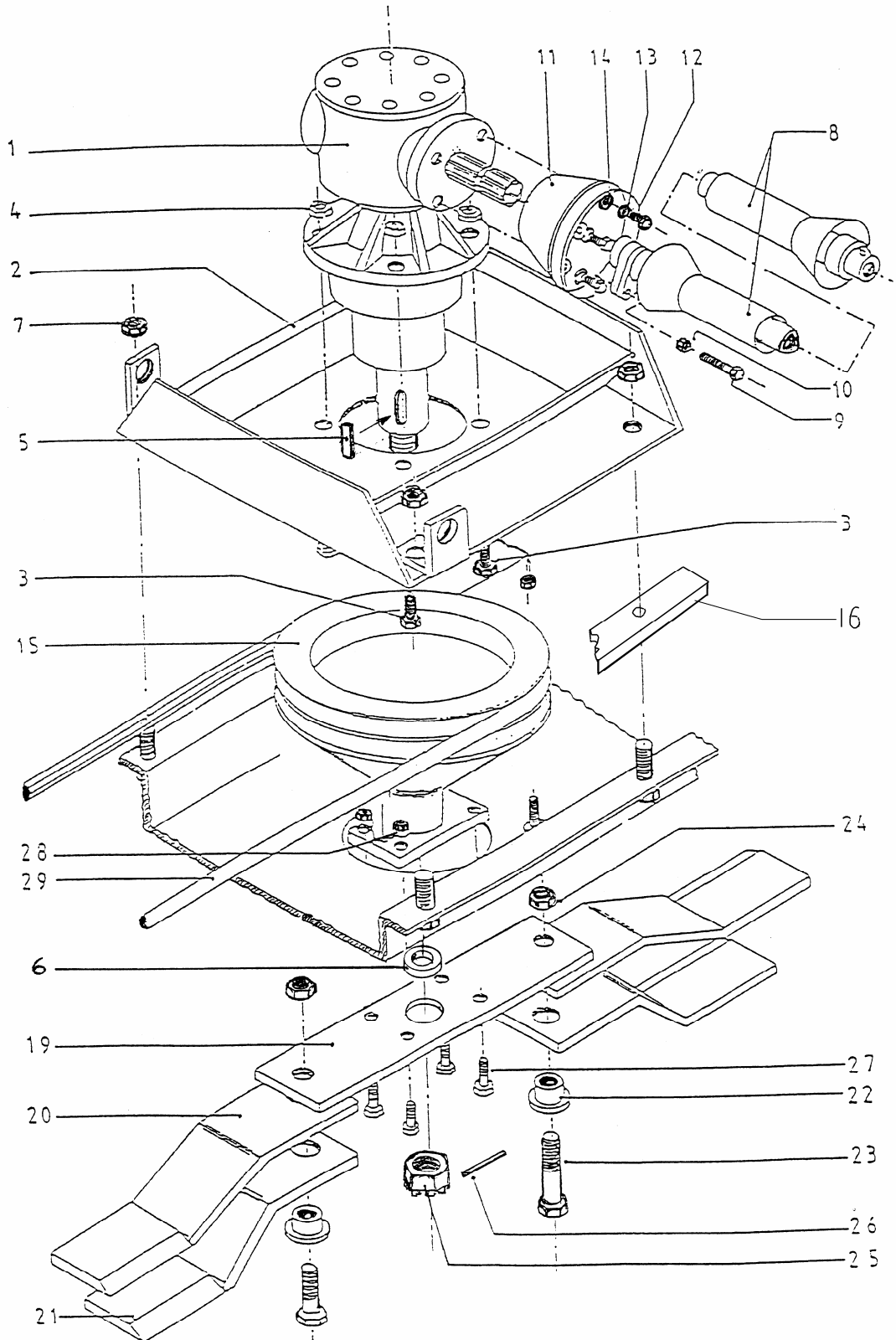
<u>ITEM</u>	<u>PART NO.</u>	<u>DESCRIPTION</u>	
	<u>QTY</u>		
1	172.291B	Body Assembly	1
2	172.204A	Headstock Assembly	1
3	172.172	Cover	2
4	172.203	Skid for topper	1
5	172.220	Skid Assembly L/H	1
6	7033	Webbing Strap c/w Hooks	1
7	190050	Top Link Sleeve (Cat 2)	1
8	1657	Top Link Pin	1
9	0832	7/16" Linch Pin	3
10	3856	Bolt M8 x 100 (8.8)	1
11	3182	Stiffnut M8 Nyloc	1
12	4421	Stiffnut M10 Nyloc	8
13	3332	Flat Washer M10	8
14	2748	Bolt M12 x 40 (8.8)	8
15	3082	Stiffnut M12	8
16	3192	M12 Flat Washer	8
17	3713	M6 x 50 Spring Pin	2
18			
19			
20 *	17200234	Baffle Plate Assembly	2
21 *	1720241	Securing Bracket	2
22 *	2987	Bolt M8 x 25 (8.8)	8
23 *	3182	Stiffnut M8	8
24 *	3111	M8 Flat Washer	8

NOTE \* Baffle Plate Kit Optional Extra



PRIMARY DRIVEPRIMARY DRIVE FOR 2.72M (9'0) MODEL

<u>ITEM</u>	<u>PART NO.</u>	<u>DESCRIPTION</u>	
	<u>QTY</u>		
1	8100	Gearbox	1
2	172.232	Gearbox Platform	1
3	2929	Bolt M16 x 45 (8.8)	4
4	3747	Stiffnut M16	4
5	172.335	Key 60 x 10 x 8	1
6	172.332	Spacer for carrier	
1			
7	3082	Stiffnut M12	4
8	7063	PTO Shaft c/w Shearbolt	1
9	7092	Shear Bolt M8 x 50 (10.9)	1
10	2719	Stiffnut M8	1
11	6385	PTO Guard	1
12	4923	Setscrew M8 x 12	4
13	3001	Spring Washer M8	4
14	3111	Plain Washer M8	4
15	1720334	Pulley	1
16	173-333	Spacer	2
17			
18			
19	1720215	Blade Carrier (9'0)	1
20	1720219	Overlapping Blade	2
21	1720218A	Standard Blade	2
22	172.230	Spacer (Long)	2
23	2878	Bolt M16 x 55 (8.8)	2
24	3747	Stiffnut M16 (Nyloc)	2
25	8121	Nut M20 Castellated (1.5 pitch)	1
26	6351	Tension Pin 4 x 30	1
27	3183	Bolt M8 x 45 (8.8)	4
28	3182	Stiffnut M8	.4

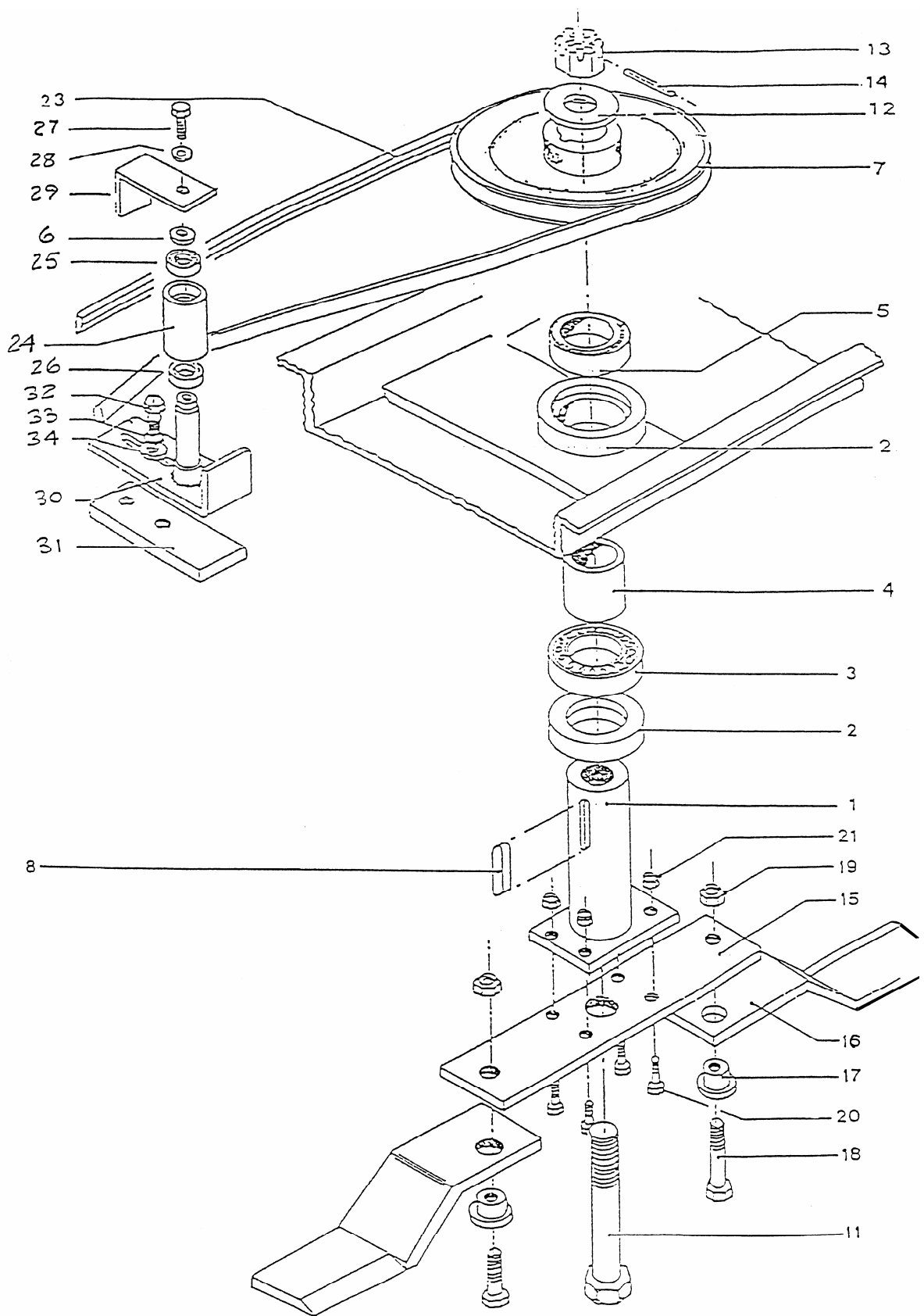


SECONDARY DRIVESECONDARY DRIVE FOR 2.72M (9'0) MODEL

<u>ITEM</u>	<u>PART NO.</u> <u>QTY</u>	<u>DESCRIPTION</u>	
1	172.224	Rotor Shaft	1
2	172.223	Spacer Ring	1
3	7010	Bearing	1
4	172.222	Bearing Spacer	1
5	7009	Bearing	1
6	3192	M12 Flat Washer	1
7	172.290	Pulley	1
8	7062	Key 50 x 12x 8 Feather	1
10			
11	7036	M20 x 220 Bolt (8.8)	1
12	172.221	Washer - Special	1
13	3203	Slotted Nut M20	1
14	6351	Tension Pin O 4.0 x 30	1
15	1720215	Blade Carrier (9'0)	1
16	1720218B	Standard Blade	2
17	1720229	Spacer (Short)	2
18	2704	Bolt M16 x 50 (8.8)	2
19	3747	Stiffnut (Nyloc) M16	2
20	6393	M8 x 35 Bolt (8.8)	4
21	3182	M8 Stiffnut	4
22 *	1720201.9	Bearing Hub	1
23	7767	Drive Belt C105	1
24	172.287	Idler	1
25	7494	Bearing (6304)	1
26	2919	Bearing (6205)	1
27	2717	Setscrew M12 x 25	1
28	2729	Spring Washer M12	1
29	172.289	Belt Retaining Bracket	1
30	172.288	Idler Pulley Mounting Bracket	1
31	172.209	Clamp Plate	1
32	2901	Bolt M16 x 35 (8.8)	2
33	2730	Spring Washer M16	2
34	2867	Flat Washer M16	2

NOTE: \* Bearing Hub - This item is welded onto the Main Frame Assembly and can only be replaced during a major overhaul/reconstruction of the Topper. It is not normally considered as a spare item.





DECALSSAFETY DECALS

<u>ITEM</u>	<u>PART NO.</u> <u>QTY</u>	<u>DESCRIPTION</u>	
1	09.811.04	Decal – Max PTO Speed ACW	1
2	09.821.01	Decal – Read Instruction Book	1
3	09.821.10	Decal – Keep Nuts Tight	1
4	09.821.16	Decal – Keep Out Zone	1
5	09.821.17	Decal - Unsupported Machine	1
6	09.821.18	Decal - Thrown Debris	1
7	09.821.19	Decal – Rotary Head Danger	1
8	09.821.20	Decal – Shaft Entanglement	1
9	09.821.22	Decal – Unblock Head (Rotary)	1

MARKETING DECALS

10	05.227.01	Serial Number Plate	1
10	05.774.07	Hammer Drive Screw No6 x 3/8”	2
11	42793.03	Decal – Sabre	2
12	45645.01	Decal – Bomford (Large)	2
13	45645.02	Decal – Bomford (Small)	2

