

PM 1881

***PRO-TRIM 1200***  
***PRO-TRIM 1500***

PARTS MANUAL

ISSUE 9

## IMPORTANT

NOTE HERE THE SERIAL NUMBER OF YOUR MACHINE AND ALWAYS QUOTE IT IN ANY COMMUNICATION WITH US OR YOUR DEALER. THIS IS PARTICULARLY IMPORTANT WHEN ORDERING SPARES. REMEMBER TO INCLUDE ALL NUMBERS AND LETTERS.

MACHINE SERIAL NUMBERS \_\_\_\_\_

THE INFORMATION GIVEN THROUGHOUT THIS MANUAL IS CORRECT AT THE TIME OF PUBLICATION. HOWEVER, IN THE COURSE OF CONSTANT DEVELOPMENT OF BOMFORD TURNER MACHINES, CHANGES IN SPECIFICATION ARE INEVITABLE. SHOULD YOU FIND THE INFORMATION GIVEN IN THIS BOOK TO BE AT VARIANCE WITH THE MACHINE IN YOUR POSSESSION, YOU ARE ADVISED TO CONTACT THE BOMFORD TURNER SERVICE DEPARTMENT WHERE UP-TO-DATE INFORMATION WILL BE PROVIDED. THE MANUAL CAN CONTAIN STANDARD AND OPTIONAL FEATURES AND IS NOT TO BE USED AS A MACHINE SPECIFICATION.

THE MACHINE HAS BEEN TESTED AND IS CONSIDERED SAFE IF CAREFULLY USED. ENSURE YOUR OPERATOR IS PROPERLY TRAINED IN ITS USE AND MAINTENANCE.

---

## IMPORTANT

NOTEZ ICI LES NUMEROS DE SERIE DE VOTRE MACHINE ET MENTIONNEZ LES DANS TOUTE COMMUNICATION AVEC NOS SERVICES OU VOTRE REVENDEUR. CECI EST IMPORTANT POUR LA COMMANDE DE PIECES DETACHEES. PENSEZ A NOTER TOUS LES NUMEROS ET TOUTES LES LETTERS.

NUMEROS DE SERIE DE LA MACHINE \_\_\_\_\_

LES INFORMATIONS DONNEES DANS CE MANUEL SONT CORRECTES CEPENDANT, DU FAIT DE DEVELOPPEMENT CONSTANT DES MACHINES BOMFORD TURNER.

CHANGEMENTS DANS LES CARACTERISTIQUES SONT INEVITABLES.

SI VOUS TROUVEZ QUE LES INFORMATIONS DONNEES NE CORRESPONDENT PAS A VOTRE MACHINE VEUILLEZ CONTACTER LE SERVICE DES REPARATIONS OU DES INFORMATIONS PLUS RECENTES VOUS SERONT DONNEES.

CE MANUEL PEUT MONTRER DES CARACTERISTIQUES OPTIONNELLES ET NE PEUT PAS ETRE CONSIDERE COMME SPECIFICATION DE LA MACHINE.

CETTE MACHINE A ETE TESTEE, ET ELLE EST CONSIDEREE COMME FIABLE A CONDITION D'UNE BONNE UTILISATION. ASSUREZ-VOUS QUE VOTRE OPERATEUR EST QUALIFIE EN CE QUI CONCERNE L'UTILISATION DE LA MACHINE AINSI QUE SON ENTRETIEN.

---

## WICHTIG

TRAGEN SIE HIER DIE SERIENNUMMERN IHRER MASCHINE EIN UND GEBEN SIE DIESE IMMER AN, WENN SIE SICH AN UNS ODER IHREN HÄNDLER WENDEN. DAS IST BESONDERS BEI ERSATZTEILBESTELLUNGEN WICHTIG. VERGESSEN SIE NICHT, ALLE ZAHLEN UND BUCHSTABEN ZU NOTIEREN.

SERIENNUMMERN DER MASCHINE \_\_\_\_\_

DIE ANGABEN IN DIESEM HANDBUCH SIND BEI VERÖFFENTLICHUNG KORREKT. AUFGRUND DER KONSTANTEN WEITERENTWICKLUNG VON BOMFORD TURNER MASCHINEN SIND JEDOCHÄNDERUGDEN IN DER SPEZIFIKATION UNVERMEIDLICH. WENN DIE INFORMATION IN DIESEM HANDBUCH NICHT MIT IHRER MASCHINE ÜBEREINSTIMMEN, NEHMEN SIE BITTE KONTAKT MIT DER BOMFORD TURNER KUNDENDIENSTABTEILUNG AUF, DIE IHNEN GERNE DIE AKTUELLEN INFORMATION ZUKOMMEN LÄSST. DAS HANDBUCH KANN SOWOHL BESCHREIBUNGEN FÜR DIE STANDARD AUSFÜHRUNG ALS AUCH FÜR ZUBEHÖR ENTHALTEN UND IST NICHT ALS MASCHINENSPEZIFIKATION ZU VERWENDET.

DIE MASCHINE IST GETESTET UND BEI SACHGEMÄSSEM BETRIEB ALS SICHER BEFUNDEN WORDEN. SORGEN SIE DAFÜR, DASS IHR BEDIENPERSONAL IN ANWENDUNG UND WARTUNG RICHTIG GESCHULT WIRD.

## **PRO-TRIM 1200 & 1500 PARTS MANUAL**

*PAGE AND ILLUSTRATION NUMBERS SHOWN ARE USED ONLY FOR REFERENCE PURPOSES AND SHOULD NOT BE USED FOR ORDERING SPARE PARTS*

*PLEASE ENSURE THAT THE CORRECT PART NUMBER AND DESCRIPTION IS GIVEN WHEN ORDERING PARTS TOGETHER WITH THE SERIAL NUMBER OF THE HEAD.*

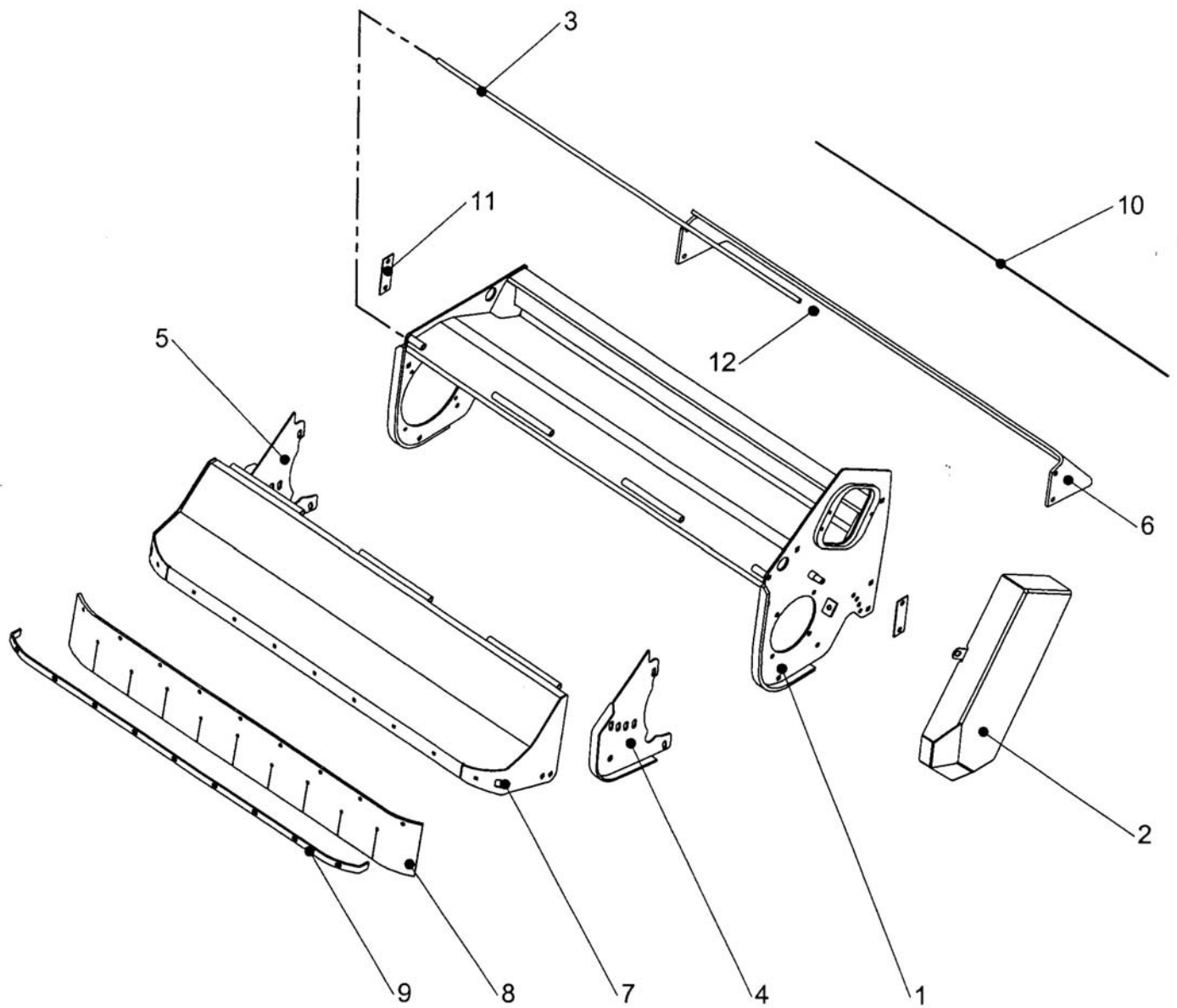
<b>Page No.</b>	<b>Section</b>
2 – 1 to 2 – 6	COWL ASSEMBLY 1200 COWL ASSEMBLY ISMP COWL ASSEMBLY 1500
3 – 1 to 3 – 4	BEARING ASSEMBLIES
4 – 1 to 4 – 2	ROLLER ASSEMBLIES
5 – 1 to 5 – 2	MOTOR ASSEMBLIES
6 – 1 to 6 – 6	ROTOR SHAFT ASSEMBLIES
7 – 1 to 7 – 2	DECALS

### **IMPORTANT**

**THIS MACHINE IS DESIGNED FOR VEGETATION CONTROL  
AND MUST NOT BE USED FOR ANY OTHER PURPOSE**

**IT IS POTENTIALLY HAZARDOUS TO FIT OR USE  
ANY PARTS OTHER THAN GENUINE BOMFORD TURNER PARTS**

**THE COMPANY DISCLAIMS ALL LIABILITY FOR THE  
CONSEQUENCES OF SUCH USE WHICH, IN ADDITION,  
VOIDS THE MACHINE WARRANTY**

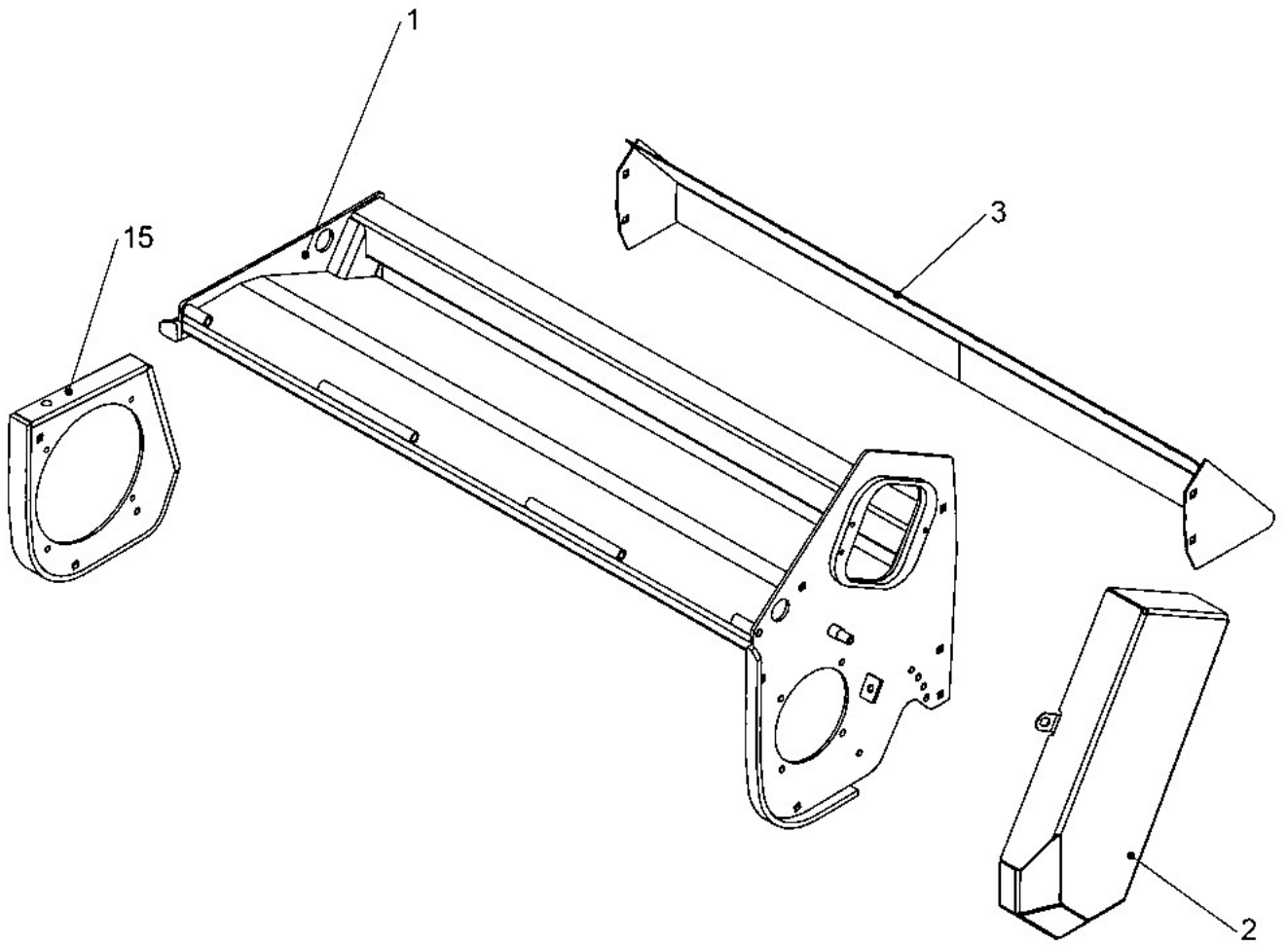


REF	PART NO	DESCRIPTION	QTY
<b>77.207.01/02 COWL - 1200 LH/RH</b>			
<b>77.207.08/09 COWL 1200 LH/RH 100LT</b>			
01	05.227.01	HAMMER DRIVE SCREW NO.6X3/8"	4
01	05.264.11	SETSCREW M10 X 20MM PLATED	1
01	05.264.13	SETSCREW M10 X 30MM PLATED	3
01	05.281.02	FLT WASHER 10MM PLATED FORM C	4
01	05.281.03	FLAT WASHER 12MM PLATED	3
01	05.282.02	SPRING WASHER 10MM PLATED	4
01	05.282.03	SPRING WASHER 12MM PLATED	6
01	05.286.03	NUT M12 PLATED	6
01	05.287.03	SELF-LOCKING NUT M12 PLATED	2
01	05.774.07	SERIAL NO. PLATE BOMFORDTURNER	1
01	05.839.26	BOLT CUP SQ M12 X 30 (PLATED)	5
01	05.839.27	BOLT CUP SQ M12 X 25 (PLATED)	2
01	05.839.34	BOLT CUP SQ M12 X 35 (PLATED)	1
01*	46353.01	COWL - LH	1
01	46353.02	COWL - RH	1
02	46366.03	GUARD - DRIVE LH	1
02	46366.04	GUARD - DRIVE RH	1
02	46366.05▲	GUARD - DRIVE LH	1
02	46366.06▲	GUARD - DRIVE RH	1
03	46392.01	PIN - PIVOT 1200	1
04	05.287.03	SELF-LOCKING NUT M12 PLATED	2
04	05.839.27	BOLT CUP SQ M12 X 25 (PLATED)	2
04*	46356.01	GUARD - LH CHEEK PLATE	1
05	05.287.03	SELF-LOCKING NUT M12 PLATED	2
05	05.839.27	BOLT CUP SQ M12 X 25 (PLATED)	2
05*	46356.02	GUARD - RH CHEEK PLATE	1
06	41884.01	GUARD - FLEXIBLE REAR 1200	1
07	05.281.03	FLAT WASHER 12MM PLATED	4
07	05.282.03	SPRING WASHER 12MM PLATED	4
07	05.286.03	NUT M12 PLATED	4
07	05.839.27	BOLT CUP SQ M12 X 25 (PLATED)	4
07*	46357.01	GUARD - FRONT	1
08	42297.01	GUARD - FLEXIBLE FRONT 1200	1
09	05.287.01	SELF-LOCKING NUT M8 PLATED	9
09*	46359.01	BACKING SRIP - PLT 6	1
09	9293064	BOLT CUP SQUARE M8X30 (PLATED)	9
10	05.287.01	SELF-LOCKING NUT M8 PLATED	9
10*	09.594.03	STRIP - BACKING 1200	1
10	9293054	BOLT CUP SQUARE M8X25 (PLATE)	9
11	05.287.03	SELF-LOCKING NUT M12 PLATED	4
11	05.839.34	BOLT CUP SQ M12 X 35 (PLATED)	4
11*	41883.01	CLAMP - GUARD	2
12	05.201.05	TENSION PIN 3MM X 20MM PLATED	2
12*	41436.01	SPACER 3/4"DIA - 12MM	2

▲ 100LTR MACHINES

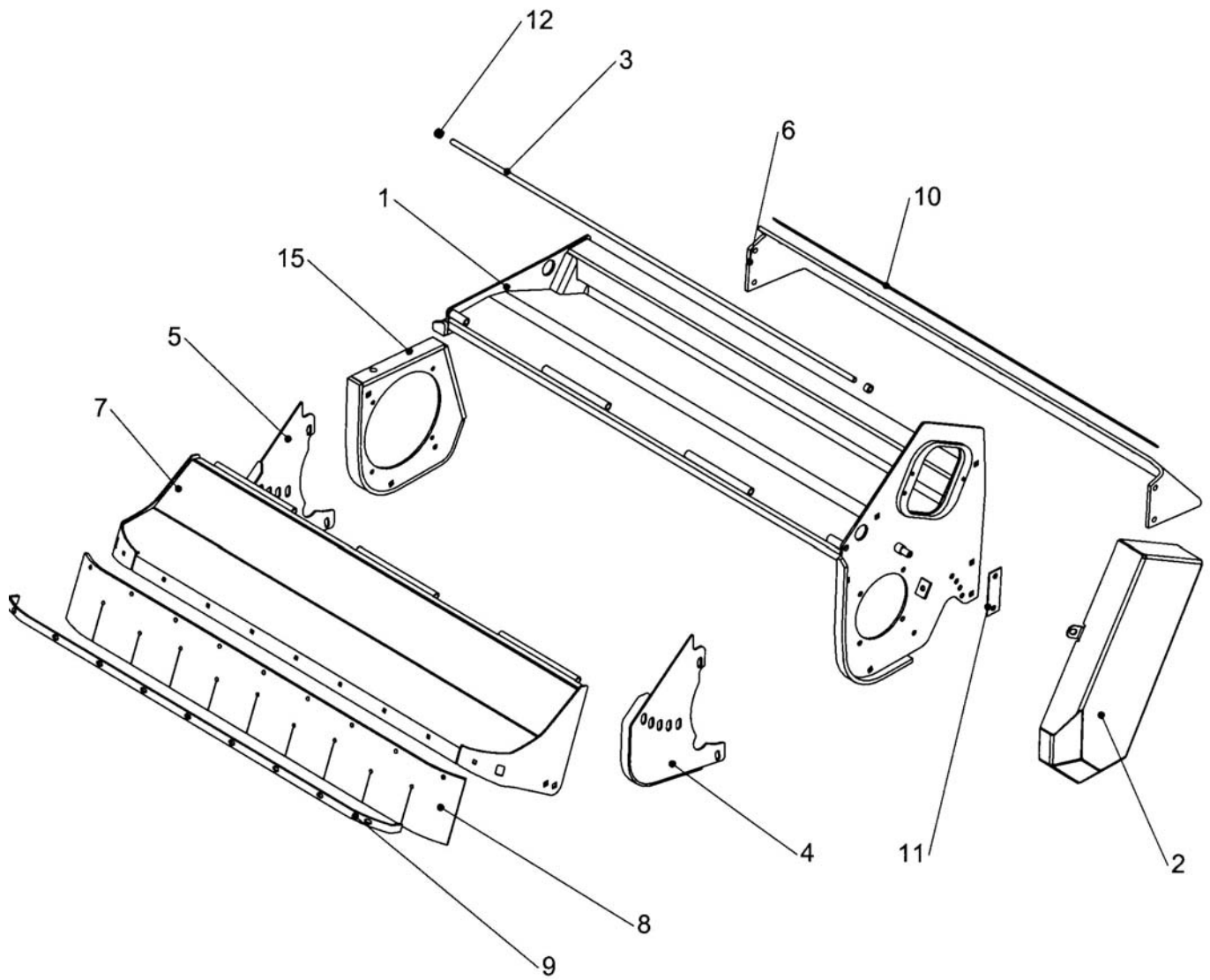
- MAIN PART IN GROUP, RELATED PARTS HAVE SAME REFERENCE NUMBER

N.I. – not illustrated



REF	PART NO	DESCRIPTION	QTY
77.207.05 COWL ASSY LH ISMPT 9287			
01	05.264.11	SETSCREW M10 X 20MM PLATED	1
01	05.264.13	SETSCREW M10 X 30MM PLATED	3
01	05.281.02	FLT WASHER 10MM PLATED FORM C	4
01	05.281.03	FLAT WASHER 12MM PLATED	3
01	05.282.02	SPRING WASHER 10MM PLATED	4
01	05.282.03	SPRING WASHER 12MM PLATED	6
01	05.286.03	NUT M12 PLATED	6
01	05.287.03	SELF-LOCKING NUT M12 PLATED	2
01	05.839.26	BOLT CUP SQ M12 X 30 (PLATED)	1
01	05.839.27	BOLT CUP SQ M12 X 25 (PLATED)	2
01	05.839.34	BOLT CUP SQ M12 X 35 (PLATED)	5
01*	46583.01	COWL - ISMPT 1200 LH	1
02	46366.03	GUARD - DRIVE LH	1
03	05.287.01	SELF-LOCKING NUT M8 PLATED	9
03	05.287.03	SELF-LOCKING NUT M12 PLATED	4
03	05.839.26	BOLT CUP SQ M12 X 30 (PLATED)	4
03*	41906.01	GUARD - REAR 1200	1
03	9293054	BOLT CUP SQUARE M8X25 (PLATE)	9
15	05.965.36	SETSCREW M16 X 45MM (FINE)	3
15	05.968.04	S.LOCKING NUT M16 (FINE) PLATE	3
15*	46585.02	BRACKET - BEARING MTG RH	1

- MAIN PART IN GROUP, RELATED PARTS HAVE SAME REFERENCE NUMBER

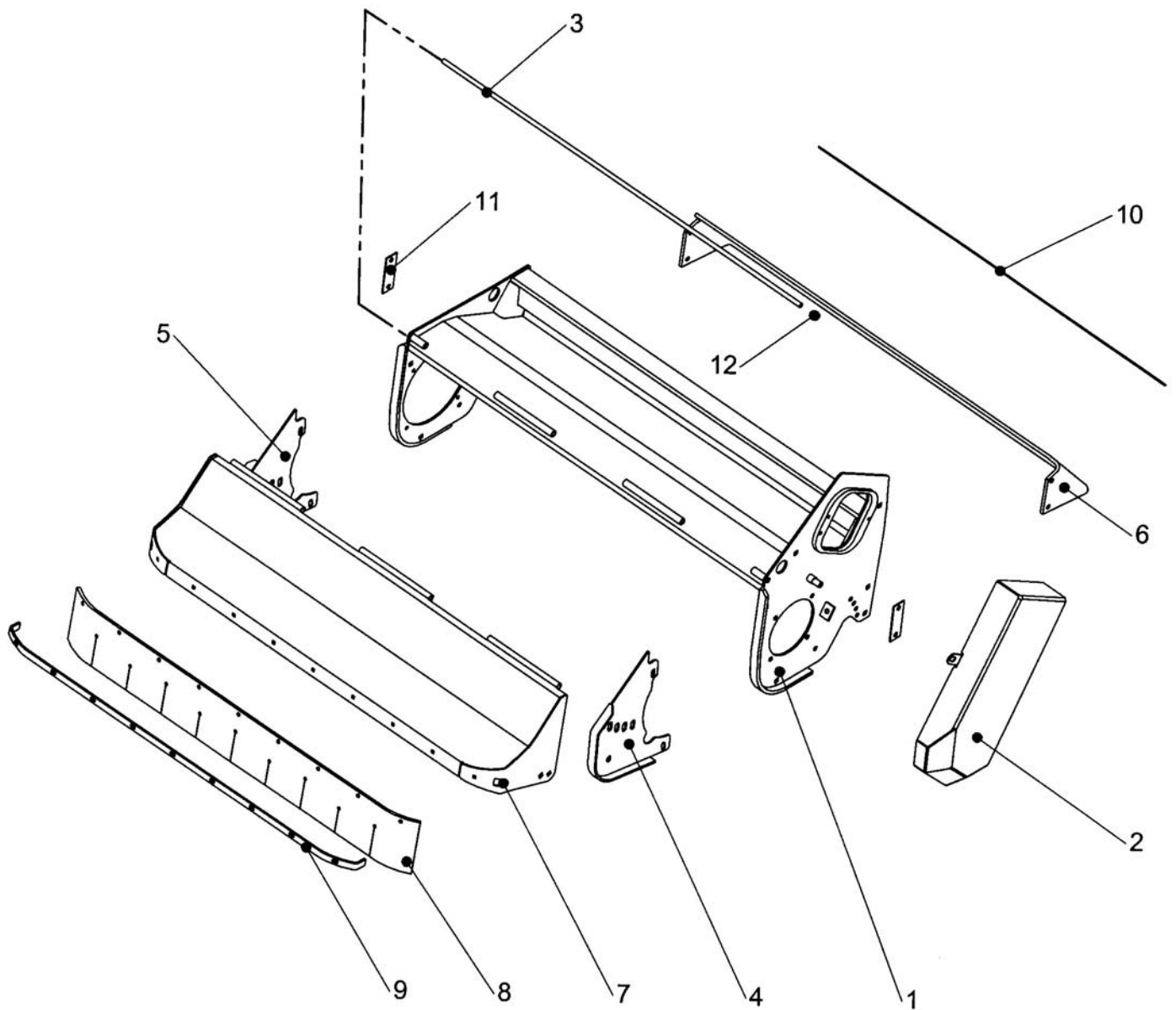




REF	PART NO	DESCRIPTION	QTY
77.207.04/10 COWL ASSY LH ISMPT 9287			
01	05.774.07	SERIAL NUMBER PLATE	1
01	05.227.01	HAMMER DRIVE SCREW	4
01	05.264.11	SETSCREW M10 X 20MM PLATED	1
01	05.264.13	SETSCREW M10 X 30MM PLATED	3
01	05.281.02	FLT WASHER 10MM PLATED FORM C	4
01	05.281.03	FLAT WASHER 12MM PLATED	3
01	05.282.02	SPRING WASHER 10MM PLATED	4
01	05.282.03	SPRING WASHER 12MM PLATED	6
01	05.286.03	NUT M12 PLATED	6
01	05.287.03	SELF-LOCKING NUT M12 PLATED	2
01	05.839.26	BOLT CUP SQ M12 X 30 (PLATED)	1
01	05.839.27	BOLT CUP SQ M12 X 25 (PLATED)	2
01	05.839.34	BOLT CUP SQ M12 X 35 (PLATED)	5
01*	46583.01	COWL - ISMPT 1200 LH	1
02	46366.03	GUARD - DRIVE LH	1
02	46366.05▲	GUARD - DRIVE LH	1
03	46392.01	PIN - PIVOT	1
04*	46356.01	GUARD LH CHEEK PLATE	1
04	05.287.03	SELF-LOCKING NUT M12 PLATED	2
04	05.839.27	BOLT CUP SQ M12 X 25 (PLATED)	2
05*	46356.02	GUARD RH CHEEK PLATE	1
05	05.287.03	SELF-LOCKING NUT M12 PLATED	2
05	05.839.27	BOLT CUP SQ M12 X 25 (PLATED)	2
06	41884.01	GUARD FLEXIBLE - REAR	1
07	05.281.03	FLAT WASHER 12MM PLATED	4
07	05.282.03	SPRING WASHER 12MM PLATED	4
07	05.286.03	NUT M12 PLATED	4
07	05.839.27	BOLT CUP SQ M12 X 25 (PLATED)	4
07*	46357.01	GUARD - FRONT	1
08	42297.01	GUARD FLEXIBLE - FRONT	1
09	05.287.01	SELF-LOCKING NUT M8 PLATED	9
09*	46359.01	BACKING STRIP PLATE	1
09	9293064	BOLT CUP SQUARE M8 X 30	9
10	05.287.01	SELF-LOCKING NUT M8 PLATED	9
10*	09.594.03	STRIP - BACKING 1200	1
10	9293054	BOLT CUP SQUARE M8X25 (PLATE)	9
11	05.287.03	SELF-LOCKING NUT M12 PLATED	4
11	05.839.34	BOLT CUP SQ M12 X 25 (PLATED)	4
11*	41883.01	CLAMP - GUARD	2
12	05.201.05	TENSION PIN 3MM X 20MM	2
12*	41436.01	SPACER 3/4" DIA	2
15	05.965.36	SETSCREW M16 X 45MM (FINE)	3
15	05.968.04	S.LOCKING NUT M16 (FINE) PLATE	3
15*	46585.02	BRACKET - BEARING MTG RH	1

▲ 100ltr Machines

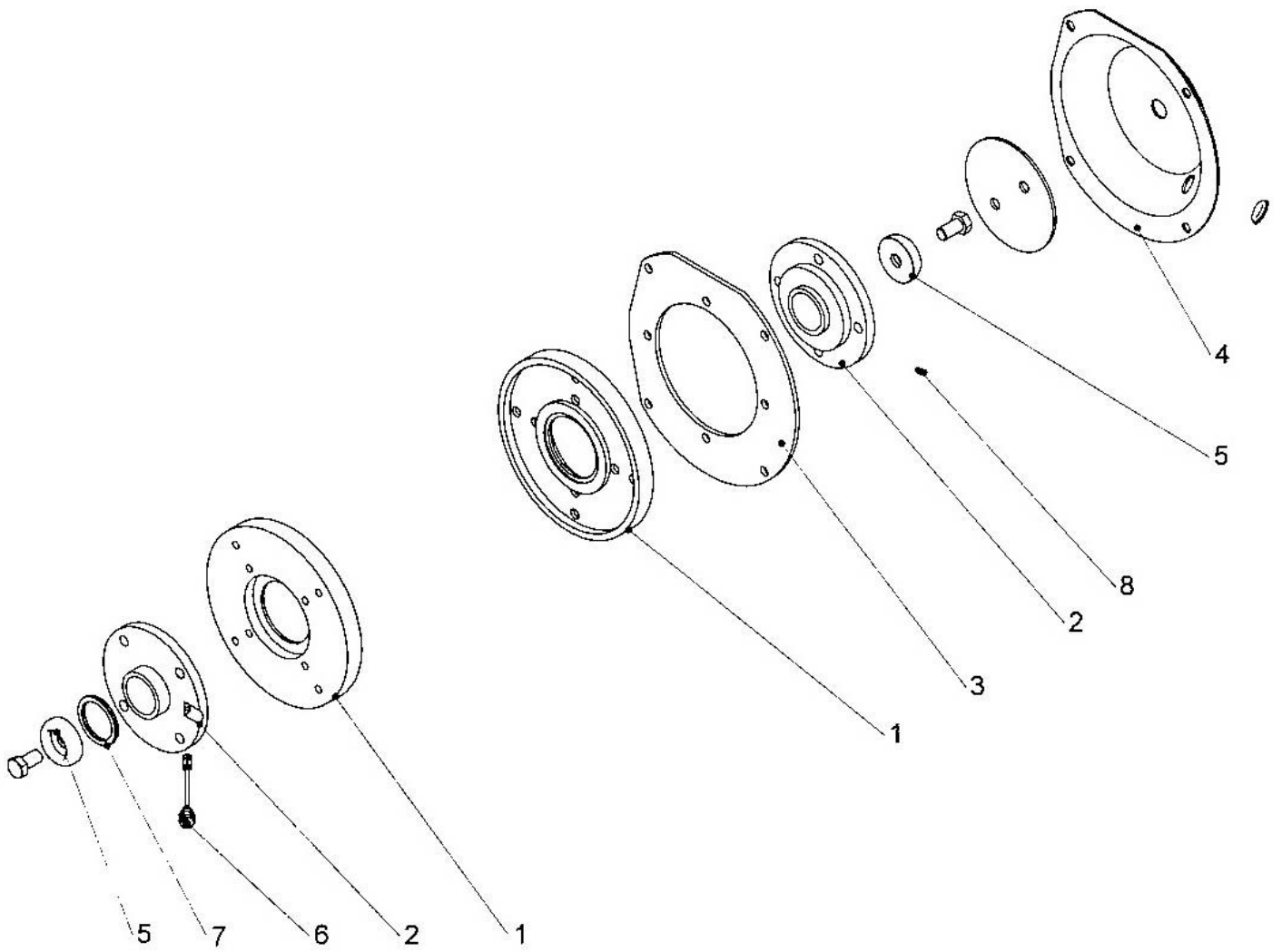
\* MAIN PART IN GROUP, RELATED PARTS HAVE SAME REFERENCE NUMBER



REF	PART NO	DESCRIPTION	QTY
<b>77.320.01 COWL - 1500 LH</b>			
01	05.227.01	HAMMER DRIVE SCREW NO.6X3/8"	4
01	05.264.11	SETSCREW M10 X 20MM PLATED	1
01	05.264.13	SETSCREW M10 X 30MM PLATED	3
01	05.281.02	FLT WASHER 10MM PLATED FORM C	4
01	05.281.03	FLAT WASHER 12MM PLATED	3
01	05.282.02	SPRING WASHER 10MM PLATED	4
01	05.282.03	SPRING WASHER 12MM PLATED	6
01	05.286.03	NUT M12 PLATED	6
01	05.287.03	SELF-LOCKING NUT M12 PLATED	2
01	05.774.07	SERIAL NO. PLATE BOMFORDTURNER	1
01	05.839.26	BOLT CUP SQ M12 X 30 (PLATED)	5
01	05.839.27	BOLT CUP SQ M12 X 25 (PLATED)	2
01	05.839.34	BOLT CUP SQ M12 X 35 (PLATED)	1
01*	46977.01	COWL - LH	1
02	46989.01	GUARD - DRIVE LH	1
03	46392.02	PIN - PIVOT 1500	1
04	05.287.03	SELF-LOCKING NUT M12 PLATED	2
04	05.839.27	BOLT CUP SQ M12 X 25 (PLATED)	2
04*	46999.01	GUARD - LH	1
05	05.287.03	SELF-LOCKING NUT M12 PLATED	2
05	05.839.27	BOLT CUP SQ M12 X 25 (PLATED)	2
05*	46999.02	GUARD - RH	1
06	41884.02	GUARD - FLEXIBLE REAR 1500	1
07	05.281.03	FLAT WASHER 12MM PLATED	4
07	05.282.03	SPRING WASHER 12MM PLATED	4
07	05.286.03	NUT M12 PLATED	4
07	05.839.27	BOLT CUP SQ M12 X 25 (PLATED)	4
07*	46357.02	GUARD - FRONT	1
08	42297.02	GUARD - FLEXIBLE FRONT 1500	1
09	05.287.01	SELF-LOCKING NUT M8 PLATED	11
09*	46359.01	BACKING STRIP - PLT 6	1
09	9293064	BOLT CUP SQUARE M8X30 (PLATED)	11
10	05.287.01	SELF-LOCKING NUT M8 PLATED	11
10*	09.594.04	STRIP - BACKING 1500	1
10	9293054	BOLT CUP SQUARE M8X25 (PLATE)	11
11	05.287.03	SELF-LOCKING NUT M12 PLATED	4
11	05.839.34	BOLT CUP SQ M12 X 35 (PLATED)	4
11*	41883.01	CLAMP - GUARD	2
12	05.201.05	TENSION PIN 3MM X 20MM PLATED	2
12*	41436.01	SPACER 3/4"DIA - 12MM	2

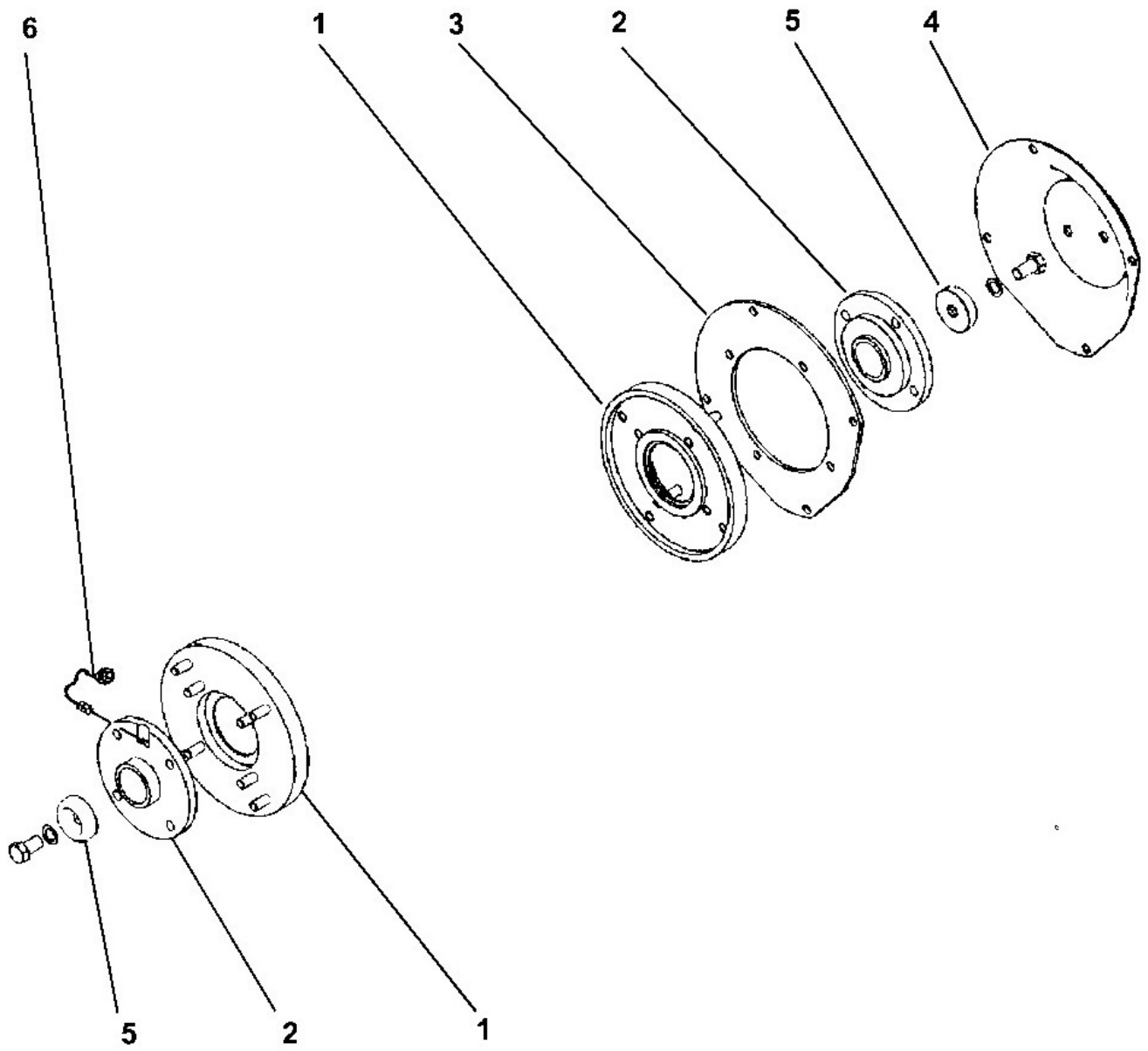
- MAIN PART IN GROUP, RELATED PARTS HAVE SAME REFERENCE NUMBER

N.I. – not illustrated



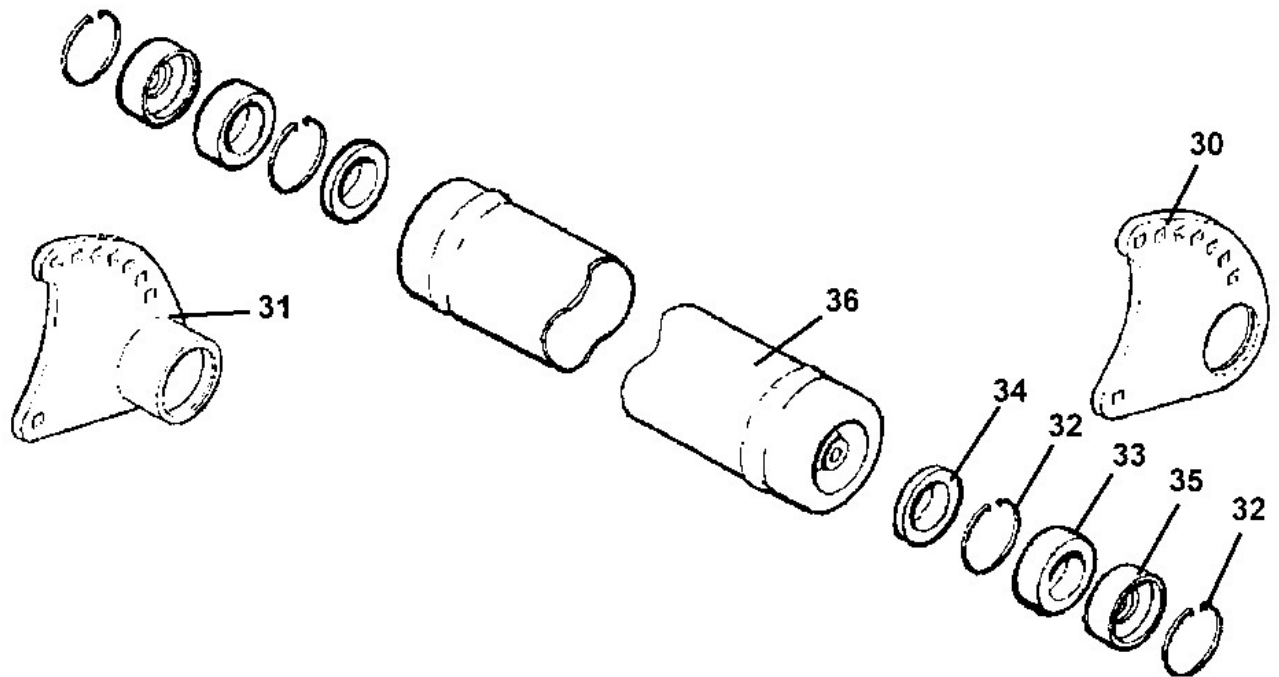
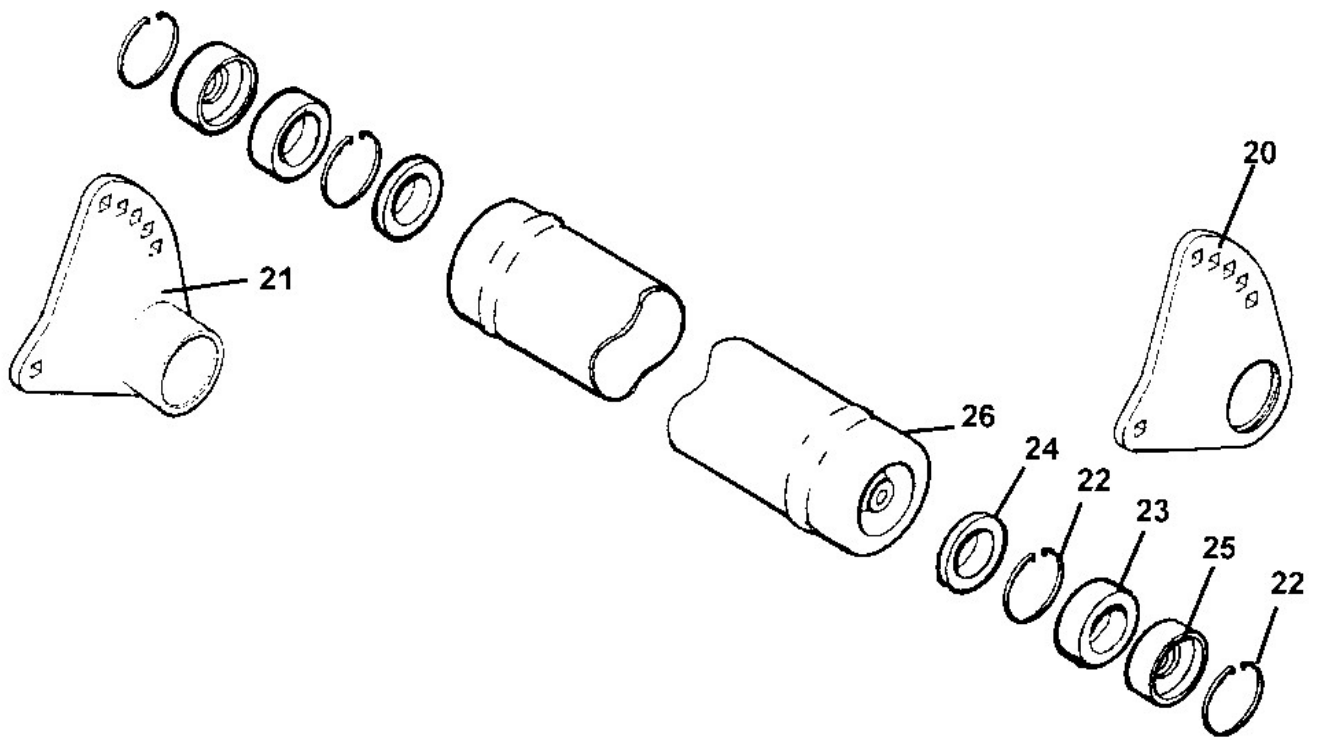
REF	PART NO	DESCRIPTION	QTY
<b>77.203.01/02 BEARING ASSEMBLY 50 BORE LH/RH</b>			
01	05.968.03	SELF LOCKING NUT M12 (FINE)	16
01*	43548.01	DISC - BEARING	2
02	43545.01	BEARING ASSEMBLY 50 BORE	2
03	05.281.03	FLAT WASHER 12MM PLATED	4
03	05.282.03	SPRING WASHER 12MM PLATED	4
03	05.286.03	NUT M12 PLATED	4
03	05.625.35	SOCKET CAPSCREW M12 X 35 PLATD	4
03*	43549.01	PLATE - BEARING MOUNTING 6MM	1
04	03.816.01	PLUG-RUBBER 25MM DIA	1
04*	43551.01	GUARD - NON DRIVE LH	1
04	43551.02	GUARD - NON DRIVE RH	1
05	05.264.35	SETSCREW M16 X 40MM PLATED	2
05	05.283.04	SHAKEPROOF WASHER 16MM PLATED	2
05*	07.942.03	WASHER - SPECIAL M16	2
06	45677.01	GREASING ASSY.- FK COWL D/END	1
07	46350.01	SPACER - C.F.S 65 x 14W - 5.25	1
08	05.953.01	GREASE NIPPLE M6	1

- MAIN PART IN GROUP, RELATED PARTS HAVE SAME REFERENCE NUMBER



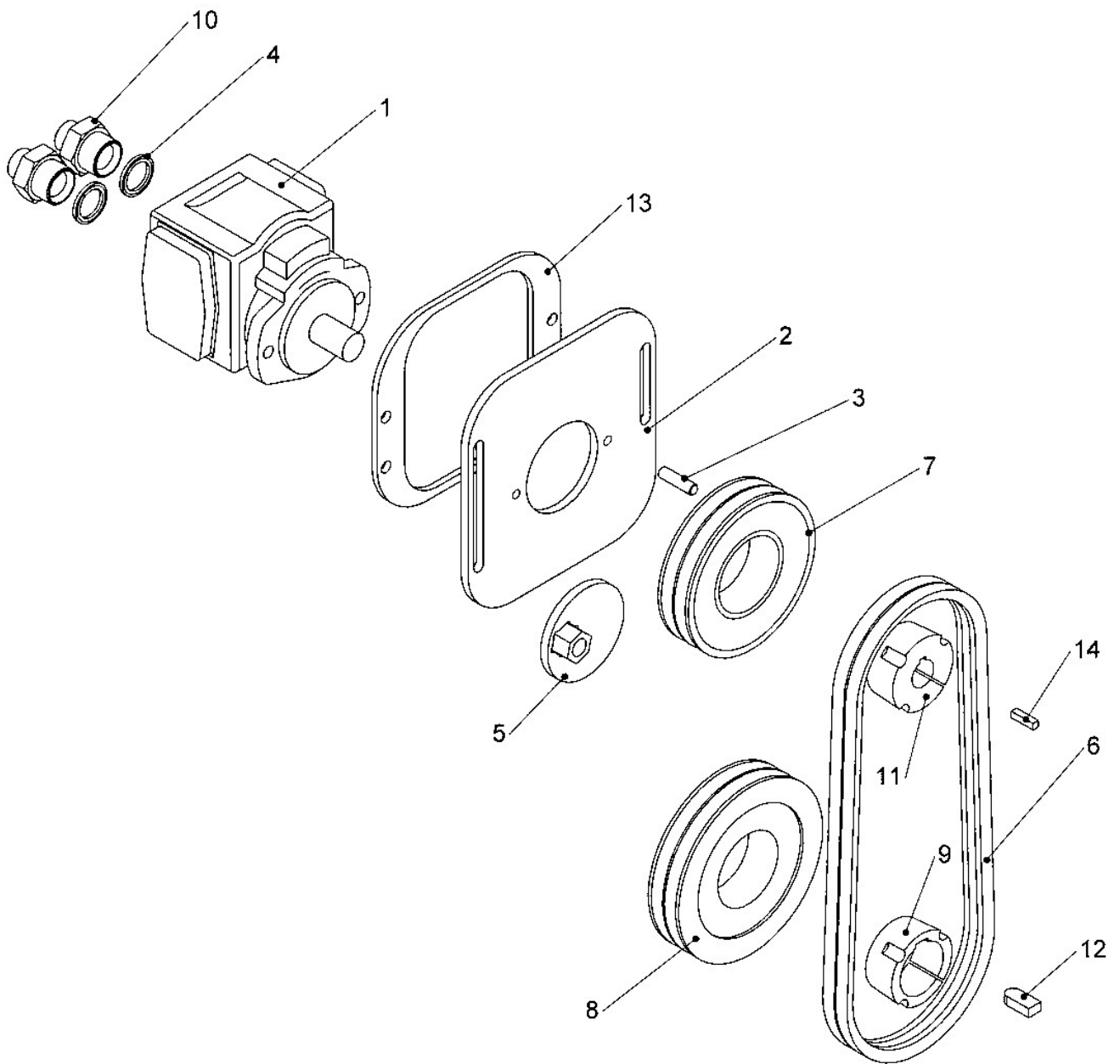
REF	PART NO	DESCRIPTION	QTY
<b>76.717.01 BEARING ASSEMBLY 50 BORE 8202</b>			
01	05.968.03	SELF LOCKING NUT M12 (FINE)	16
01*	43548.01	DISC - BEARING	2
02	43545.01	BEARING ASSEMBLY 50 BORE	2
03	05.281.03	FLAT WASHER 12MM PLATED	4
03	05.282.03	SPRING WASHER 12MM PLATED	4
03	05.283.03	SHAKEPROOF WASHER 12MM PLATED	4
03	05.286.03	NUT M12 PLATED	4
03	05.625.35	SOCKET CAPSCREW M12	4
03*	43549.01	PLATE - BEARING MOUNTING	1
04	43551.01	GUARD - NON DRIVE LH	1
05	05.264.35	SETSCREW M16 X 40MM PLATED	2
05	05.283.04	SHAKEPROOF WASHER 16MM PLATED	2
05*	07.942.03	WASHER - SPECIAL M16	2
06	45677.01	GREASING ASSY.- FK COWL D/END	1

**\*MAIN PART IN GROUP, RELATED PARTS HAVE THE SAME REFERENCE NUMBER**





REF	PART NO	DESCRIPTION	QTY
<b>76.284.07 ROLLER ASSY 115DIA - 1200</b>			
20	42502.03	BRACKET - ROLLER 115 LH	1
21	42502.04	BRACKET - ROLLER 115 RH	1
22	05.959.05	CIRCLIP - INT 62MM DIA	4
23	42954.01	BEARING - D/ROW BALL 30MM BORE	2
24	04.164.04	SEAL-LIP 40DIA X 10MM	2
25*	05.953.01	GREASE NIPPLE M6	4
25	41851.01	CAP - BEARING RETAINER	2
26	05.234.01	WASHER 44.5 X 13 X 5MM PLATED	2
26	05.282.03	SPRING WASHER 12MM PLATED	2
26	05.625.10	SKT CAPSCRW M12X30DOME HD PLT	2
26*	42056.01	ROLLER 115 DIA - 1200	1
<b>76.284.17 ROLLER ASSY 115DIA - 1500</b>			
20	42502.03	BRACKET - ROLLER 115 LH	1
21	42502.04	BRACKET - ROLLER 115 RH	1
22	05.959.05	CIRCLIP - INT 62MM DIA	4
23	42954.01	BEARING - D/ROW BALL 30MM BORE	2
24	04.164.04	SEAL-LIP 40DIA X 10MM	2
25*	05.953.01	GREASE NIPPLE M6	4
25	41851.01	CAP - BEARING RETAINER	2
26	05.234.01	WASHER 44.5 X 13 X 5MM PLATED	2
26	05.282.03	SPRING WASHER 12MM PLATED	2
26	05.625.10	SKT CAPSCRW M12X30DOME HD PLT	2
26*	42056.02	ROLLER 115 DIA - 1500	1
<b>76.284.12 ROLLER ASSY 150DIA 1200TM</b>			
30	42398.03	BRACKET - ROLLER 150 LH	1
31	42398.04	BRACKET - ROLLER 150 RH	1
32	05.959.05	CIRCLIP - INT 62MM DIA	4
33	42954.01	BEARING - D/ROW BALL 30MM BORE	2
34	04.164.04	SEAL-LIP 40DIA X 10MM	2
35	05.953.01	GREASE NIPPLE M6	4
35	41851.01	CAP - BEARING RETAINER	2
36	05.234.01	WASHER 44.5 X 13 X 5MM PLATED	2
36	05.282.03	SPRING WASHER 12MM PLATED	2
36	05.625.10	SKT CAPSCRW M12X30DOME HD PLT	2
36	42955.04	ROLLER 6" DIA - 1200	1
<b>76.284.18 ROLLER ASSY 150DIA 1500PT</b>			
30	42398.03	BRACKET - ROLLER 150 LH	1
31	42398.04	BRACKET - ROLLER 150 RH	1
32	05.959.05	CIRCLIP - INT 62MM DIA	4
33	42954.01	BEARING - D/ROW BALL 30MM BORE	2
34	04.164.04	SEAL-LIP 40DIA X 10MM	2
35	05.953.01	GREASE NIPPLE M6	4
35	41851.01	CAP - BEARING RETAINER	2
36	05.234.01	WASHER 44.5 X 13 X 5MM PLATED	2
36	05.282.03	SPRING WASHER 12MM PLATED	2
36	05.625.10	SKT CAPSCRW M12X30DOME HD PLT	2
36	42955.05	ROLLER 6" DIA - 1500	1



## 77.208.01 MOTOR ASSEMBLY 84L

01	09.773.06	HYDRAULIC MOTOR 2TR033	1
02	46355.01	PLATE - MTR MNTG - PLT 8 50B	1
03*	04.282.56	STUD M10 X 37MM	1
03	05.282.02	SPRING WASHER 10MM PLATED	2
03	05.286.02	NUT M10 PLATED	2
04	05.290.06	BONDED SEAL 3/4"BSP	2
05	46365.01	BRACKET - TENSIONER	1
06	05.299.36	V-BELT XPA 1060 QUAD POWER	2
07	03.795.06	PULLEY-VEE 140MM PCD 2 SPA	1
08	03.795.12	PULLEY - 2SPA X 160 PCD (T/L)	1
09	05.424.25	TAPER LOCK - 2012 X 50MM BORE	1
10	05.373.01	ADAPTOR 3/4"BSP X 1"BSP	2
11	05.424.08	TAPER-LOCK 1"BORE (2012)	1
12	05.960.31	KEY S/REP - 14X9X32	1
13	46469.01	MOTOR SPACER PLATE	1
14	01.071.13	KEY-SEP 1/4"X1/4"X1"	1

## 77.208.02 MOTOR ASSEMBLY 70L

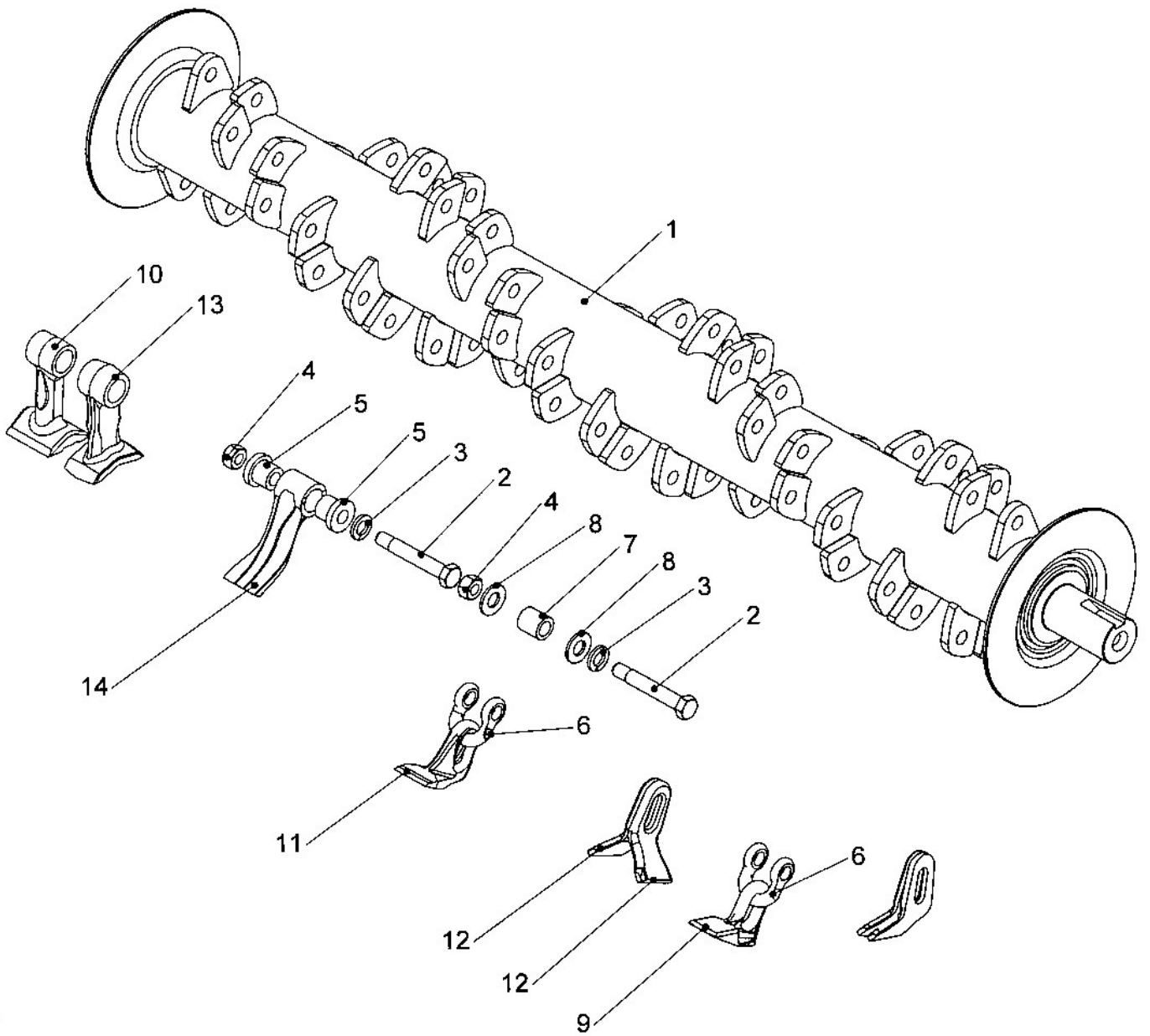
01	09.773.11	HYDRAULIC MOTOR	1
02	46355.01	PLATE - MTR MNTG - PLT 8 50B	1
03*	04.282.56	STUD M10 X 37MM	1
03	05.282.02	SPRING WASHER 10MM PLATED	2
03	05.286.02	NUT M10 PLATED	2
04	05.290.06	BONDED SEAL 3/4"BSP	2
05	46365.01	BRACKET - TENSIONER	1
06	05.299.36	V-BELT XPA 1060 QUAD POWER	2
07	03.795.06	PULLEY-VEE 140MM PCD 2 SPA	1
08	03.795.12	PULLEY - 2SPA X 160 PCD (T/L)	1
09	05.424.25	TAPER LOCK - 2012 X 50MM BORE	1
10	05.377.01	ADAPTOR 3/4"BSP X 1"BSP	2
11	05.424.08	TAPER-LOCK 1"BORE (2012)	1
12	05.960.31	KEY S/REP - 14X9X32	1
13	46469.01	MOTOR SPACER PLATE	1
14	01.071.13	KEY-SEP 1/4"X1/4"X1"	1

## 77.208.03 MOTOR ASSEMBLY 100L

01	09.773.03	HYDRAULIC MOTOR	1
01	09.773.02	SEAL KIT FOR HYDRAULIC MOTOR	-
01	41905.01	DECAL - 100L	1
02	46355.03	PLATE - MTR MNTG	1
03	04.282.56	STUD M10 X 37MM	1
03	05.282.02	SPRING WASHER 10MM PLATED	2
03	05.286.02	NUT M10 PLATED	2
04	05.290.06	BONDED SEAL 3/4"BSP	2
05	46365.01	BRACKET - TENSIONER	1
06	05.299.36	V-BELT XPA 1060 QUAD POWER	3
07	03.795.03	PULLEY-VEE 140MM PCD 3 SPA	1
08	03.795.01	PULLEY - 3SPA X 160 PCD (T/L)	1
09	05.424.13	TAPER LOCK - 2517 X 50MM BORE	1
10	05.373.01	ADAPTOR 3/4"BSP X 1"BSP	2
11	05.424.07	TAPER-LOCK 1"BORE (2517)	1
12	05.960.31	KEY S/REP - 14X9X32	1
13	46469.02	MOTOR SPACER PLATE	1
14	01.071.13	KEY-SEP 1/4"X1/4"X1"	1

## 77.208.04 MOTOR ASSEMBLY 100L 1500 HEADS

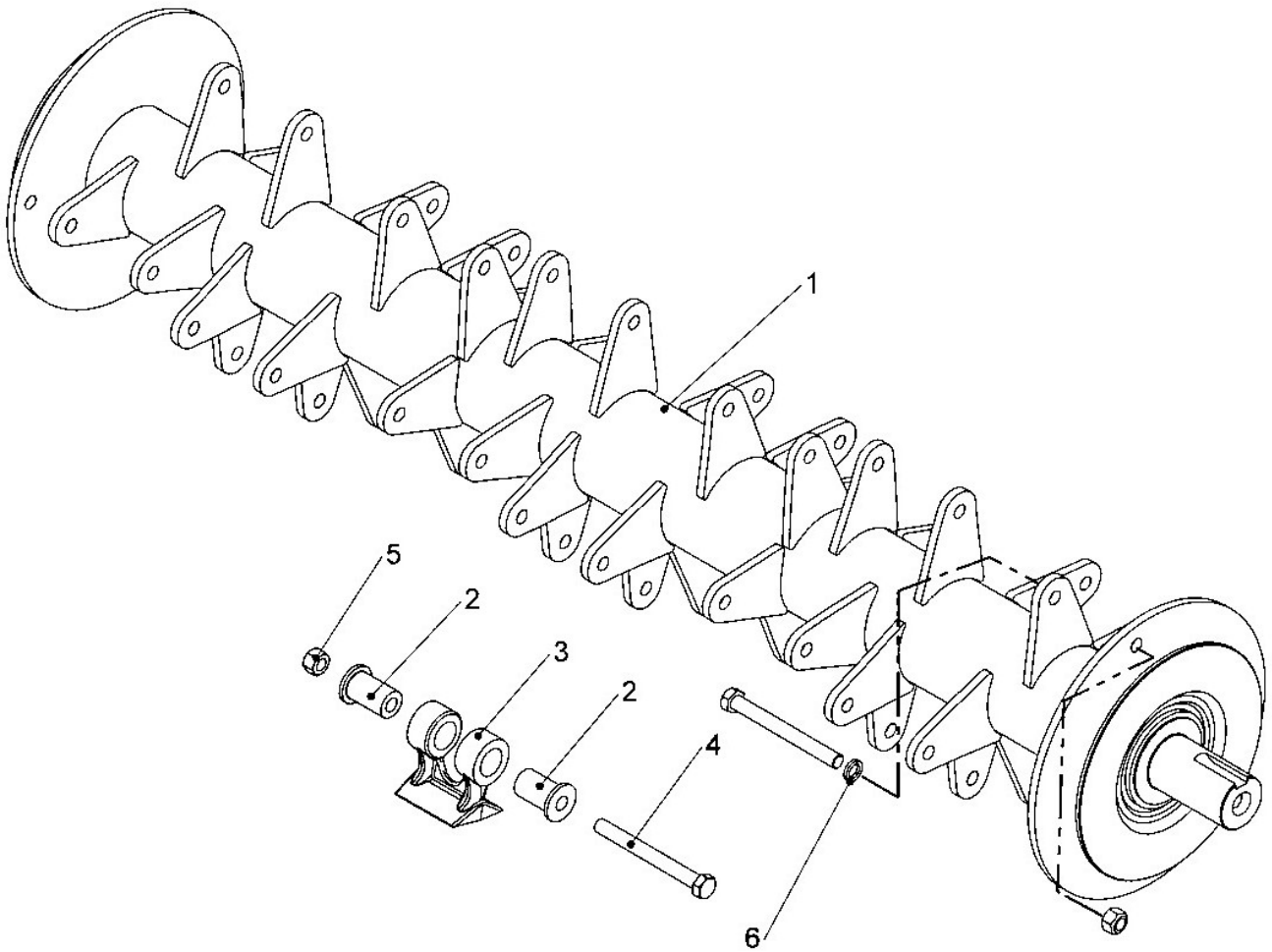
01	09.773.03	HYDRAULIC MOTOR	1
01	09.773.02	SEAL KIT FOR HYDRAULIC MOTOR	-
01	41905.01	DECAL - 100L	1
02	46355.01	PLATE - MTR MNTG	1
03	04.282.56	STUD M10 X 37MM	1
03	05.282.02	SPRING WASHER 10MM PLATED	2
03	05.286.02	NUT M10 PLATED	2
04	05.290.06	BONDED SEAL 3/4"BSP	2
05	46365.01	BRACKET - TENSIONER	1
06	05.299.36	V-BELT XPA 1060 QUAD POWER	3
07	03.795.03	PULLEY-VEE 140MM PCD 3 SPA	1
08	03.795.01	PULLEY - 3SPA X 160 PCD (T/L)	1
09	05.424.13	TAPER LOCK - 2517 X 50MM BORE	1
10	05.373.01	ADAPTOR 3/4"BSP X 1"BSP	2
11	05.424.07	TAPER-LOCK 1"BORE (2517)	1
12	05.960.13	KEY S/REP - 14X9X45	1
13	46469.01	MOTOR SPACER PLATE	1
14	01.071.13	KEY-SEP 1/4"X1/4"X1"	1



REF	PART NO	DESCRIPTION	QTY
<b>46348.01 ROTOR SH.ASSY</b>			
01	46347.01	ROTOR SHAFT	1
02	05.775.10	BOLT - SPECIAL M14 X 96MM	32
03	05.282.04	SPRING WASHER 16MM PLATED	32
04	05.968.06	S.LOCKING NUT M14 (FINE) PLATE	32
06	05.895.01	SHACKLE-FORGED	32
07	02.807.01	SPACER 1"O/D X 16MM I/D X 27MM	32
08	05.281.04	FLAT WASHER 16MM PLATED	64
09	09.902.01	FLAIL – HS60	32
10	46399.01	FLAIL – 62MM	32
11	42750.01	FLAIL - FORGED MP44	32
12	41654.01	FLAIL – FLARED 51 X 8	64
13	46400.01	FLAIL – 44MM	32
14	46358.01	FLAIL – SINGLE EDGE	32

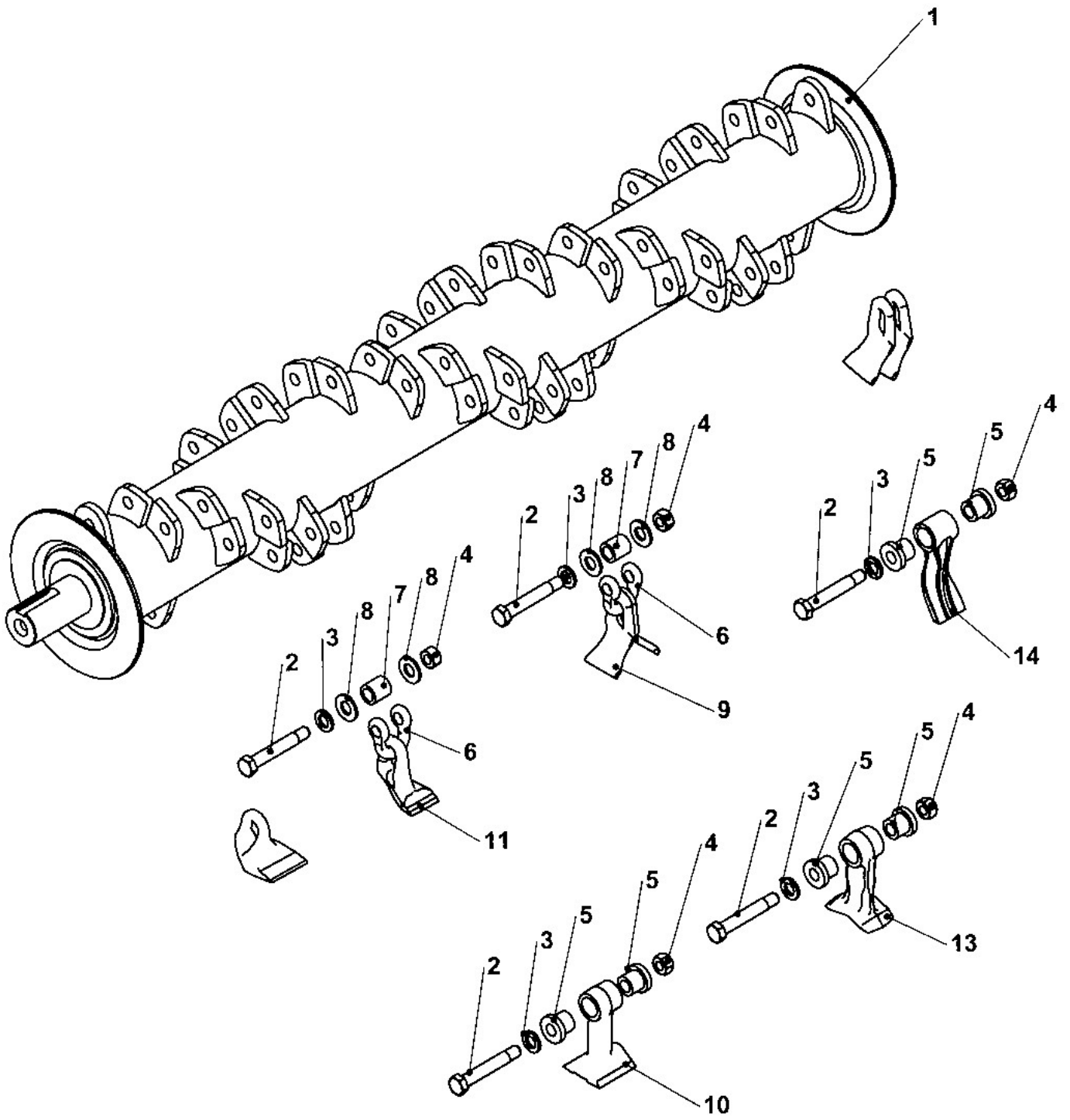
**47175.03 ROTOR SH.ASSY 100L**

01	47175.01	ROTOR SHAFT	1
02	05.775.10	BOLT - SPECIAL M14 X 96MM	32
03	05.282.04	SPRING WASHER 16MM PLATED	32
04	05.968.06	S.LOCKING NUT M14 (FINE) PLATE	32
05	09.894.01	COLLAR – PIVOT	64
06	05.895.01	SHACKLE-FORGED	32
07	02.807.01	SPACER 1"O/D X 16MM I/D X 27MM	32
08	05.281.04	FLAT WASHER 16MM PLATED	64
10	46399.01	FLAIL – 62MM	32
11	42750.01	FLAIL - FORGED MP44	32



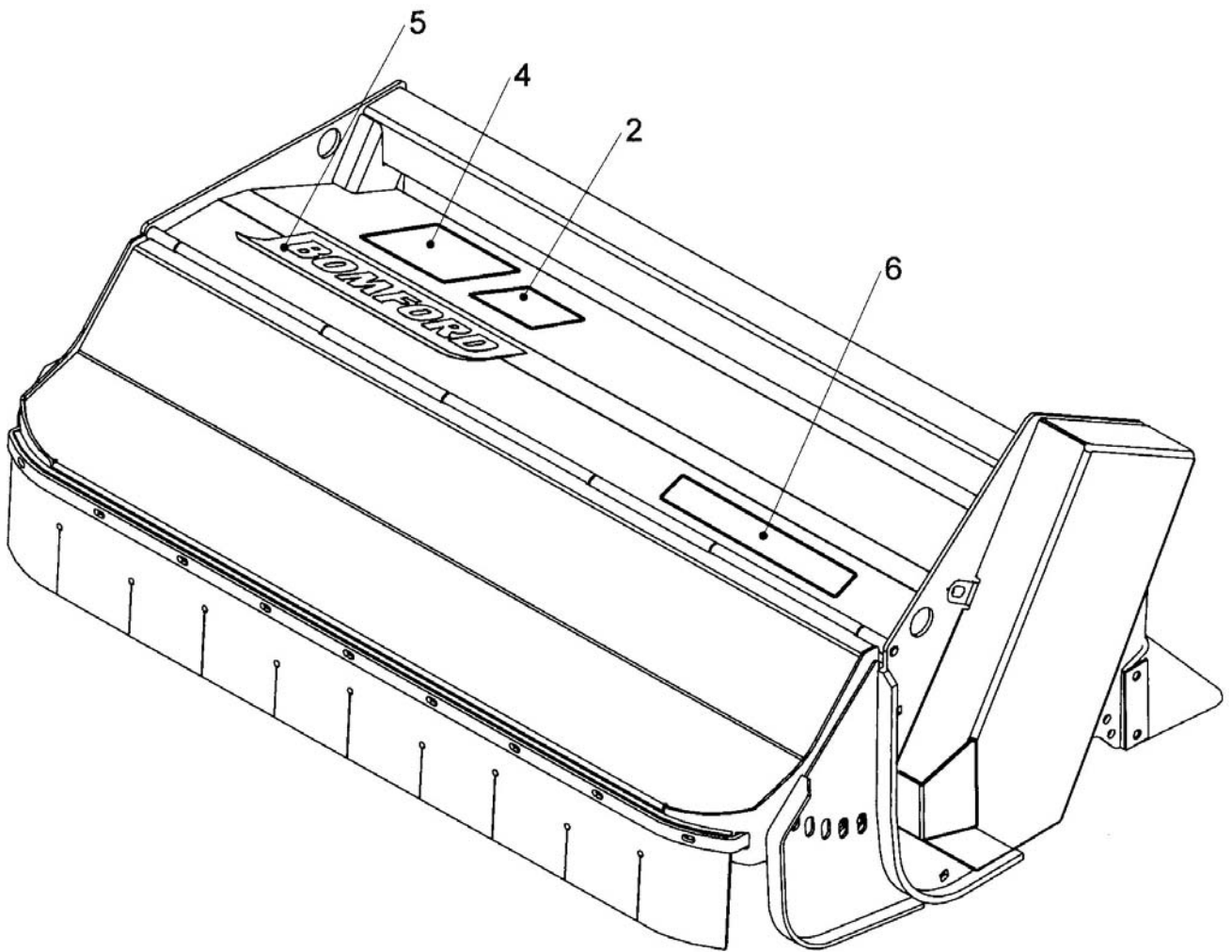
NOTE: THE WASHER ITEM 6  
IS ONLY FITTED TO THE FLAILS  
ATTACHED TO THE SHAFT  
END DISCS.

REF	PART NO	DESCRIPTION	QTY
<b>46450.01 ROTOR ASSY 4644901/4259403</b>			
01	46449.01	SHAFT - BUSHMASTER	1
02	42598.02	COLLAR - PIVOT	48
03	46402.01	FLAIL - BUSHMASTER OPEN	24
04	05.411.01	BOLT-1/2"UNF X 4.7/8"	24
05	05.295.04	S.LOCKING NUT 1/2"UNF PLATED	24
06	05.293.05	SPRING WASHER 1/2" PLATED	2
<b>46450.02 ROTOR ASSY 4743301/4640201</b>			
01	47433.01	SHAFT - BUSHMASTER	1
02	42598.02	COLLAR - PIVOT	48
03	46402.01	FLAIL - BUSHMASTER OPEN	24
04	05.411.01	BOLT-1/2"UNF X 4.7/8"	24
05	05.295.04	S.LOCKING NUT 1/2"UNF PLATED	24
06	05.293.05	SPRING WASHER 1/2" PLATED	2





REF	PART NO	DESCRIPTION	QTY
<b>45670.02 ROTOR SH.ASSY 1500</b>			
01	45597.01	SHAFT TUBULAR 1500	1
02	05.755.10	BOLT SPECIAL M14 X 96MM	40
03	05.282.04	SPRING WASHER 16MM	40
04	05.968.06	S LOCKING NUT M14 (FINE)	40
05	09.894.01	COLLAR – PIVOT	80
10	46399.01	FLAIL – ADI 62MM	40



---

REF	PART NO	DESCRIPTION	QTY
77.209.01 DECALS - PRO-TRIM HEAD			
01	09.810.02	DECAL-GREASE (40 HOURS)	4
02	09.821.35	EURO DECAL - MINIATURISED	1
03	09.843.02	DECAL - LIFT POINT 350 KG	2
04	41.054.01	DECAL - HEAD GUARDING	1
05	45645.02	DECAL - BOMFORD (50MM FONT)	1
06	46462.01	DECAL - PRO-TRIM	1
07	42638.02	DECAL - BELT TENSION	1