

PM 946

1250, 1510, ISMP

CUTTING HEAD

PARTS MANUAL

ISSUE

IMPORTANT

NOTE HERE THE SERIAL NUMBER OF YOUR MACHINE AND ALWAYS QUOTE IT IN ANY COMMUNICATION WITH US OR YOUR DEALER. THIS IS PARTICULARLY IMPORTANT WHEN ORDERING SPARES. REMEMBER TO INCLUDE ALL NUMBERS AND LETTERS.

MACHINE SERIAL NUMBERS _____

THE INFORMATION GIVEN THROUGHOUT THIS MANUAL IS CORRECT AT THE TIME OF PUBLICATION. HOWEVER, IN THE COURSE OF CONSTANT DEVELOPMENT OF BOMFORD TURNER MACHINES, CHANGES IN SPECIFICATION ARE INEVITABLE. SHOULD YOU FIND THE INFORMATION GIVEN IN THIS BOOK TO BE AT VARIANCE WITH THE MACHINE IN YOUR POSSESSION, YOU ARE ADVISED TO CONTACT THE BOMFORD TURNER SERVICE DEPARTMENT WHERE UP-TO-DATE INFORMATION WILL BE PROVIDED.

THE MANUAL CAN CONTAIN STANDARD AND OPTIONAL FEATURES AND IS NOT TO BE USED AS A MACHINE SPECIFICATION.

THE MACHINE HAS BEEN TESTED AND IS CONSIDERED SAFE IF CAREFULLY USED. ENSURE YOUR OPERATOR IS PROPERLY TRAINED IN ITS USE AND MAINTENANCE.

IMPORTANT

NOTEZ ICI LES NUMEROS DE SERIE DE VOTRE MACHINE ET MENTIONNEZ LES DANS TOUTE COMMUNICATION AVEC NOS SERVICES OU VOTRE REVENDEUR. CECI EST IMPORTANT POUR LA COMMANDE DE PIECES DETACHEES. PENSEZ A NOTER TOUS LES NUMEROS ET TOUTES LES LETTERS.

NUMEROS DE SERIE DE LA MACHINE _____

LES INFORMATIONS DONNEES DANS CE MANUEL SONT CORRECTES CEPENDANT, DU FAIT DE DEVELOPPEMENT CONSTANT DES MACHINES BOMFORD TURNER.

CHANGEMENTS DANS LES CARACTERISTIQUES SONT INEVITABLES.

SI VOUS TROUVEZ QUE LES INFORMATIONS DONNEES NE CORRESPONDENT PAS A VOTRE MACHINE VEUILLEZ CONTACTER LE SERVICE DES REPARATIONS OU DES INFORMATIONS PLUS RECENTES VOUS SERONT DONNEES. CE MANUEL PEUT MONTRER DES CARACTERISTIQUES OPTIONNELLES ET NE PEUT PAS ETRE CONSIDERE COMME SPECIFICATION DE LA MACHINE.

CETTE MACHINE A ETE TESTEE, ET ELLE EST CONSIDEREE COMME FIABLE A CONDITION D'UNE BONNE UTILISATION. ASSUREZ-VOUS QUE VOTRE OPERATEUR EST QUALIFIE EN CE QUI CONCERNE L'UTILISATION DE LA MACHINE AINSI QUE SON ENTRETIEN.

WICHTIG

TRAGEN SIE HIER DIE SERIENNUMMERN IHRER MASCHINE EIN UND GEBEN SIE DIESE IMMER AN, WENN SIE SICH AN UNS ODER IHREN HÄNDLER WENDEN. DAS IST BESONDERS BEI ERSATZTEILBESTELLUNGEN WICHTIG. VERGESSEN SIE NICHT, ALLE ZAHLEN UND BUCHSTABEN ZU NOTIEREN.

SERIENNUMMERN DER MASCHINE _____

DIE ANGABEN IN DIESEM HANDBUCH SIND BEI VERÖFFENTLICHUNG KORREKT. AUFGRUND DER KONSTANTEN WEITERENTWICKLUNG VON BOMFORD TURNER MASCHINEN SIND JEDOCHÄNDERUGDEN IN DER SPEZIFIKATION UNVERMEIDLICH. WENN DIE INFORMATION IN DIESEM HANDBUCH NICHT MIT IHRER MASCHINE ÜBEREINSTIMMEN, NEHMEN SIE BITTE KONTAKT MIT DER BOMFORD TURNER KUNDENDIENSTABTEILUNG AUF, DIE IHNEN GERNE DIE AKTUELLEN INFORMATION ZUKOMMEN LÄSST.

DAS HANDBUCH KANN SOWOHL BESCHREIBUNGEN FÜR DIE STANDARD AUSFÜHRUNG ALS AUCH FÜR ZUBEHÖR ENTHALTEN UND IST NICHT ALS MASCHINENSPEZIFIKATION ZU VERWENDET.

DIE MASCHINE IST GETESTET UND BEI SACHGEMÄSSEM BETRIEB ALS SICHER BEFUNDEN WORDEN. SORGEN SIE DAFÜR, DASS IHR BEDIENPERSONAL IN ANWENDUNG UND WARTUNG RICHTIG GESCHULT WIRD.

NOTE: PAGE & ILLUSTRATION NUMBERS SHOWN ARE USED ONLY FOR REFERENCE PURPOSES AND SHOULD NOT BE USED FOR ORDERING SPARE PARTS. PLEASE GIVE FULL PART NUMBER AND DESCRIPTION WHEN ORDERING SPARE PARTS.

FOR MACHINE WITH SERIAL NUMBERS COMMENCING FROM:

HEAD 12505832YA.....

HEAD 15101557ZA.....

HEAD ISMP2500ZA.....

PAGE NO.	TITLE	SCHEDULE NO.
2 - 1 to 2 - 2	COWL ASSEMBLY 1250 HEAD	72.019.01
	COWL ASSEMBLY 1250 HEAD	72.020.01
	ROLLER ASSEMBLY 1250 HEAD	72.017.01
		72.018.01
3 - 1 to 3 - 2	ROTOR SHAFT ASSEMBLY 1250 HEAD	72.021.01
	ROTOR SHAFT ASSEMBLY 1250 HEAD	72.022.01
	BEARING ASSEMBLY 1250 HEAD	71.025.02
4 - 1 to 4 - 2	MOTOR ASSEMBLY 1250 HEAD	72.023.01
5 - 1 to 5 - 2	COWL ASSEMBLY 1510 HEAD	71.368.01
		71.772.01
	ROLLER ASSEMBLY 1510 HEAD	72.122.01
	ROLLER ASSEMBLY 1510 HEAD	72.123.01
6 - 1 to 6 - 2	ROTOR SHAFT ASSEMBLY 1510 HEAD	71.369.02
		71.716.02
	BEARING ASSEMBLY 1510 HEAD	71.025.02
7 - 1 to 7 - 2	MOTOR ASSEMBLY 1510 HEAD	72.023.01
8 - 1 to 8 - 2	COWL ASSEMBLY ISMP HEAD	71.045.03
	ROLLER ASSEMBLY	72.125.01
9 - 1 to 9 - 3	ROTOR SHAFT ASSEMBLY ISMP	71.068.01
		71.070.01
	BEARING ASSEMBLY	71.078.02
10 - 1 to 10 - 2	MOTOR ASSEMBLY ISMP	72.049.01
11 - 1 to 11 - 2	DECALS 1250-1510 ISMP	71.017.03
12 - 1 to 12 - 2	1510 SLIDE MOUNT KIT	71.840.01
	CASTOR WHEEL KIT	71.936.01

IMPORTANT

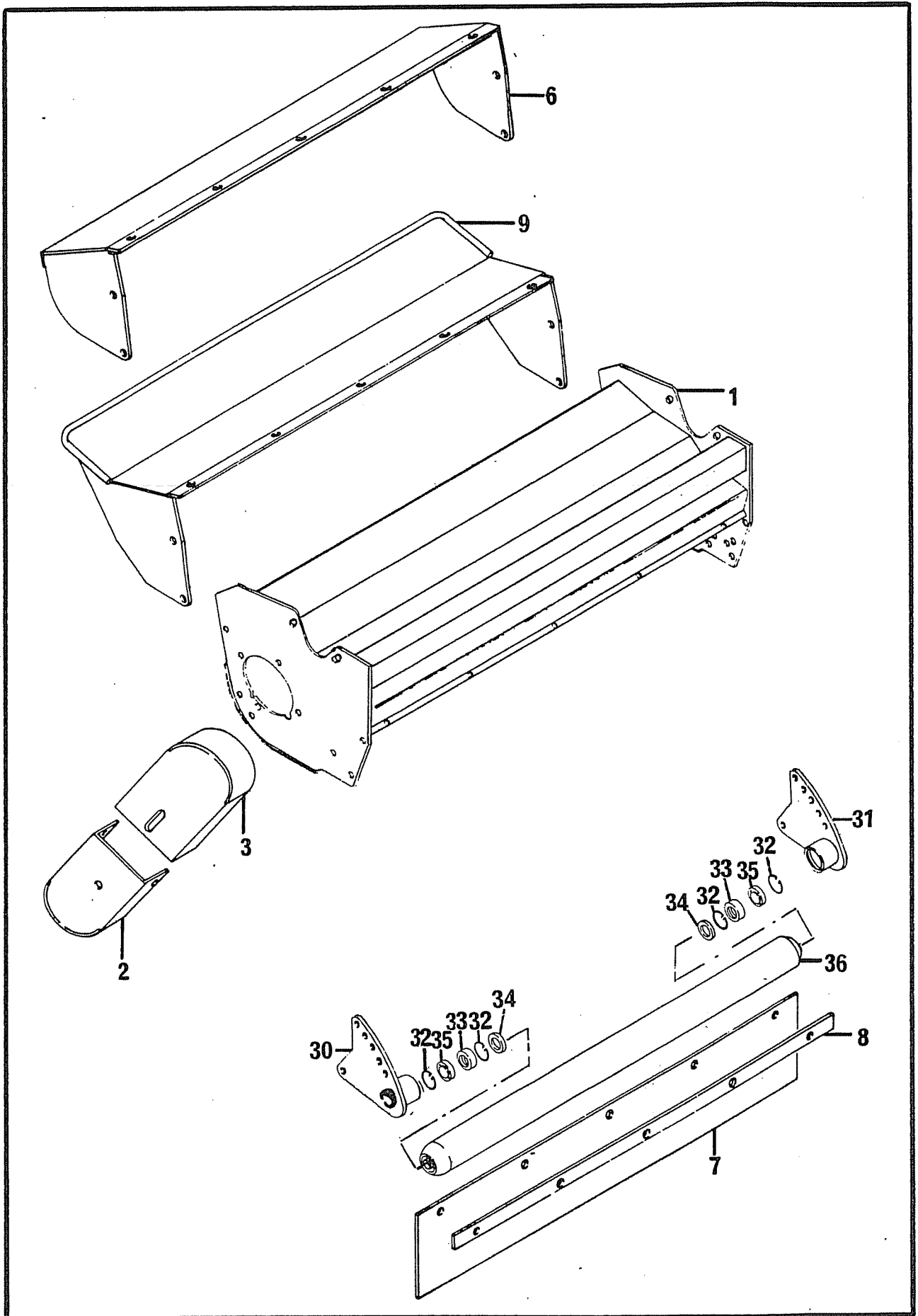
IT IS POTENTIALLY HAZARDOUS TO FIT OR USE
ANY PARTS OTHER THAN GENUINE BOMFORD TURNER PARTS.

THE COMPANY DISCLAIMS ALL LIABILITY FOR THE
CONSEQUENCES OF SUCH USE, WHICH IN ADDITION
VOIDS THE MACHINE WARRANTY.

THIS MACHINE IS FOR VEGETATION CONTROL AND
MUST NOT BE USED FOR ANY OTHER PURPOSE

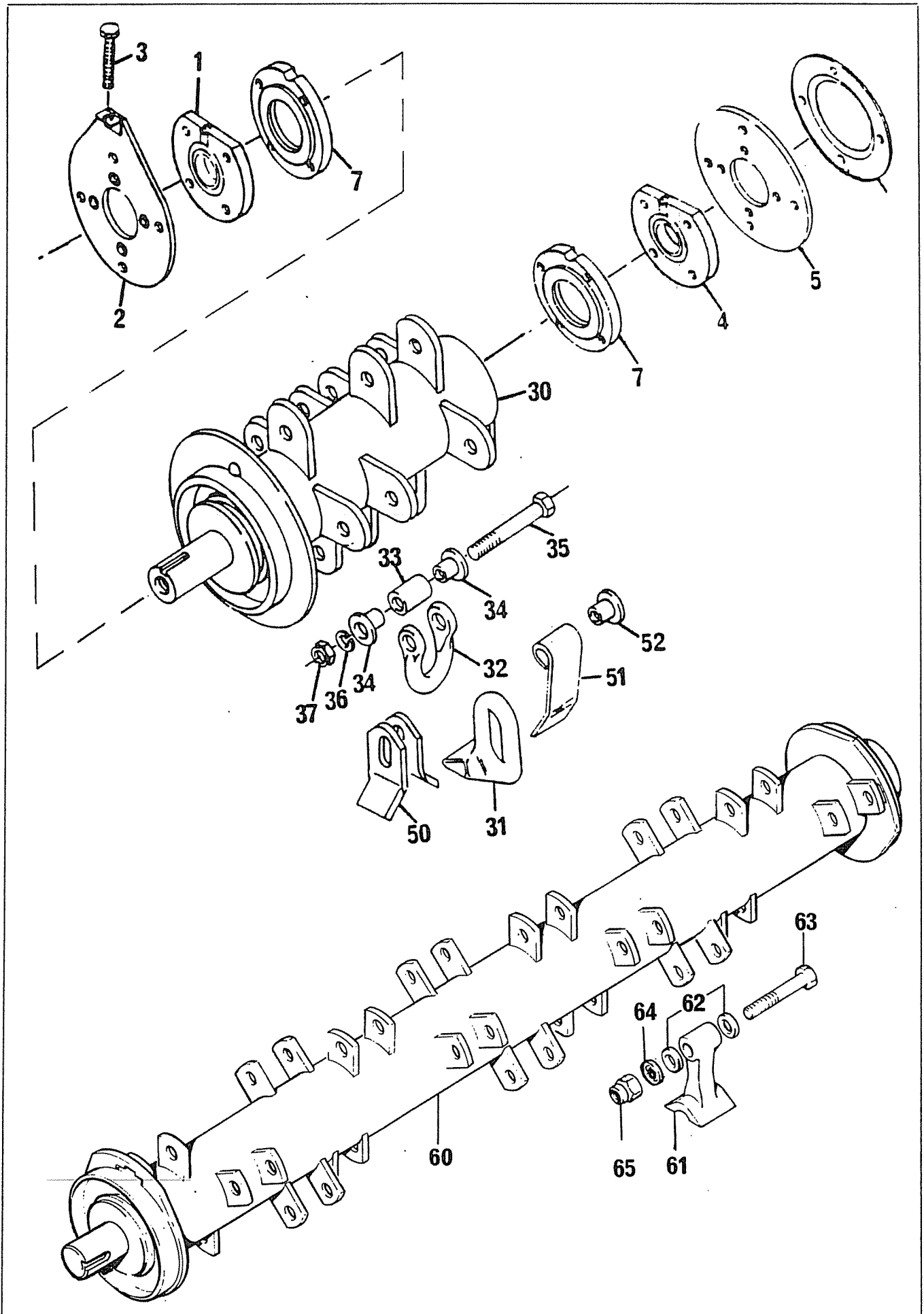
THE ILLUSTRATIONS AND TEXT COMBINE STANDARD,
ALTERNATIVE AND OPTIONAL PARTS AND MUST NOT
BE USED AS A PRODUCT SPECIFICATION.

CHECK REAR OF MANUAL FOR UPDATES



REF	PART NO.	DESCRIPTION	QTY	SERIAL NO. FROM - TO
72.019.01, 72.020.01		COWL ASSEMBLY		
01	05.227.01	HAMMER DRIVE SCREW NO.6 X 3/8"	2	
01	05.774.04	SERIAL NO. PLATE (BOMFORD)	1	
*01	07.817.01	COWL 1250 HEAD	1	
02	05.264.21	SETSCREW M12 X 20MM PLATED	1	
02	05.281.03	FLAT WASHER 12MM PLATED	1	
02	05.282.03	SPRING WASHER 12MM PLATED	2	
02	05.286.03	NUT M12 PLATED	1	
*02	06.205.01	GUARD - BOTTOM DRIVE	1	
03	05.264.21	SETSCREW M12 X 20MM PLATED	2	
03	05.282.03	SPRING WASHER 12MM PLATED	2	
*03	06.222.01	GUARD - TOP DRIVE	1	
06	05.264.12	SETSCREW M10 X 25MM PLATED	9	
06	05.282.02	SPRING WASHER 10MM PLATED	9	
06	05.286.02	NUT M10 PLATED	9	
*06	07.818.01	GUARD - FRONT HOOD	1	
*07	07.829.01	GUARD - FLEXIBLE	1	
08	05.264.02	SETSCREW M8 X 25MM PLATED	5	
08	05.282.01	SPRING WASHER 8MM PLATED	5	
08	05.286.01	NUT M8 PLATED	5	
*08	07.830.01	BACKING STRIP	1	
*09	07.819.01	GUARD - FRONT	1	
09	05.264.12	SETSCREW M10 X 25MM PLATED	9	
09	05.282.02	SPRING WASHER 10MM PLATED	9	
09	05.286.02	NUT M10 PLATED	9	
72.017.01, 72.018.01		ROLLER ASSEMBLY		
30	05.264.24	SETSCREW M12 X 35MM PLATED	2	
30	05.281.03	FLAT WASHER 12MM PLATED	2	
30	05.282.03	SPRING WASHER 12MM PLATED	2	
30	05.287.03	SELF - LOCKING NUT M12 PLATED	2	
*30	07.823.01	BRACKET - ROLLER 115 LH	1	
	07.822.01	BRACKET - ROLLER 150 LH	1	
31	05.264.24	SETSCREW M12 X 35MM PLATED	3	
31	05.281.03	FLAT WASHER 12MM PLATED	3	
31	05.282.03	SPRING WASHER 12MM PLATED	3	
31	05.287.03	SELF - LOCKING NUT M12 PLATED	3	
*31	07.823.02	BRACKET - ROLLER 115 RH	1	
	07.822.02	BRACKET - ROLLER 150 RH	1	
*32	05.959.05	CIRCLIP - INT 62MM DIA	4	
*33	03.007.02	BEARING - BALL 30MM BORE	2	
*34	04.164.04	SEAL - LIP 40DIA X 10MM	2	
*35	04.394.01	FLANGE - BEARING RETAINER PLATED	2	
35	05.953.01	GREASE NIPPLE M6	4	
36	05.234.01	WASHER 1.3/4" X 17/32" X 3/16"	2	
36	05.264.23	SETSCREW M12 X 30MM PLATED	2	
36	05.282.03	SPRING WASHER 12MM PLATED	2	
*36	06.752.03	ROLLER 115 DIA - 1250	1	
	07.826.01	ROLLER 150 DIA - 1250	1	
*35	41851.01	CAP BEARING RETAINER	2)	From Serial No.
36	05.625.10	SKT CAPSCREW M12 X 30 DOMED	2)	2024G/96

* MAIN PART IN GROUP, RELATED PARTS HAVE SAME REFERENCE NUMBER



REF	PART NO.	DESCRIPTION	QTY	SERIAL NO. FROM - TO
71.025.02		BEARING ASSEMBLY		
01	05.345.05	SOCKET CSK SCREW M12 X 1.75 X 40	4	
*01	06.221.01	BEARING ASSEMBLY 40 BORE	2	
02	05.282.03	SPRING WASHER 12MM PLATED	8	
02	05.286.03	NUT M12 PLATED	4	
02	05.625.10	SKT CAPSCRW M12 X 30 DOME HD PLT	4	
*02	06.193.01	PLATE - BEARING DRIVE END	1	
03	05.286.03	NUT M12 PLATED	2	
*03	06.220.01	BOLT - ADJUSTING PLATED	1	
05	05.282.03	SPRING WASHER 12MM PLATED	4	
05	05.286.03	NUT M12 PLATED	4	
05	05.625.10	SKT CAPSCRW M12 X 30 DOME HD PLT	4	
*05	06.197.01	PLATE - BEARING NON DRIVE	1	
*06	06.195.01	GUARD - NON DRIVE	1	
07	05.264.24	SETSCREW M12 X 35MM PLATED	4	
07	02.824.01	WASHER 50 O/D X 13 I/D X 5MM	2	
07	05.264.23	SETSCREW M12 X 30MM PLATED	2	
07	05.283.03	SHAKEPROOF WASHER 12MM PLATED	2	
*07	06.219.01	DISC - SHIELD	2	

07.836.02 ROTOR SHAFT ASSEMBLY COMPRISING ITEMS 30-37, CLOCKWISE ROTATION

07.837.02 ROTOR SHAFT ASSEMBLY COMPRISING ITEMS 30-37, ANTI-CLOCKWISE ROTATION

*30		SHAFT - TUBULAR 1250	1	
*31	02.959.01	FLAIL - FORGED	36	
*32	05.895.01	SHACKLE - FORGED	36	
*33	02.807.01	SPACER 1" O/D X 16MM I/D X 27MM	36	
*34	02.801.01	COLLAR 10.5 I/D X 26,15 O/D X 24	72	
*35	05.775.02	BOLT M10 X 86MM (FINE)	36	
*36	05.282.02	SPRING WASHER 10MM PLATED	36	
*37	05.968.02	SELF LOCKING NUT M10 (FINE)	36	
*50	02.812.01	FLAIL - FORMED 40 X 6	72	SPARES ONLY
*51	06.189.01	FLAIL - FORMED 40 X 8	36	SPARES ONLY
*52	06.192.02	COLLAR 10.5 I/D X 26, 19 O/D X 21.5	72	SPARES ONLY

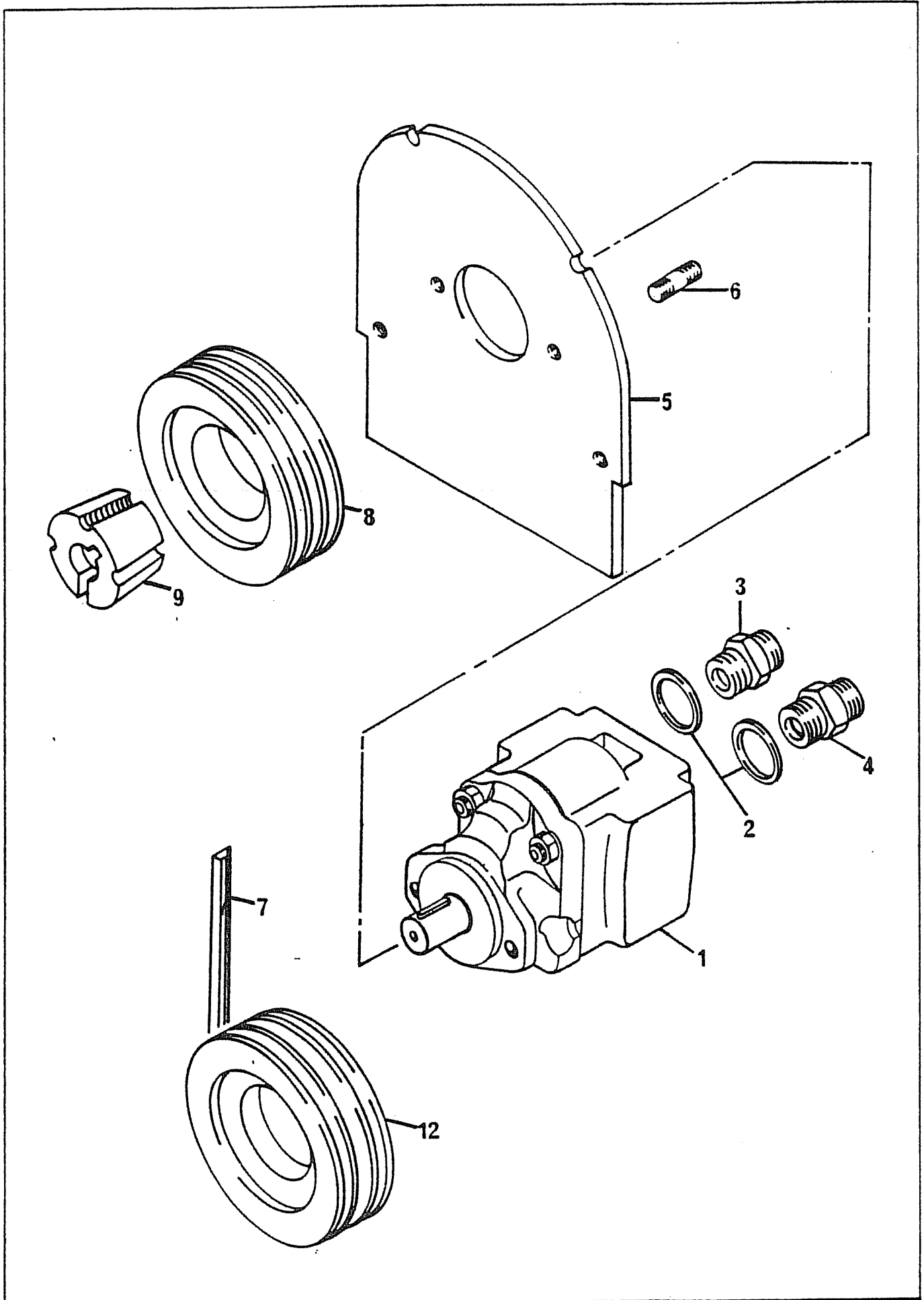
41.278.01 ROTOR SHAFT ASSEMBLY COMPRISING ITEMS 60-65

*60		SHAFT-TUBULAR 1250	1	
*61	09.905.01	FLAIL-FORGED 62MM	24	
*62	09.894.01	COLLAR-PIVOT	48	
*63	05.775.10	BOLT-SPECIAL M14 X 94MM	24	
*64	05.282.08	SPRING WASHER 14MM	24	
*65	05.968.06	SELF LOCKING NUT M14 (FINE)	24	

NOTE: FOR SHAFTS THAT USE 16MM BOLTS

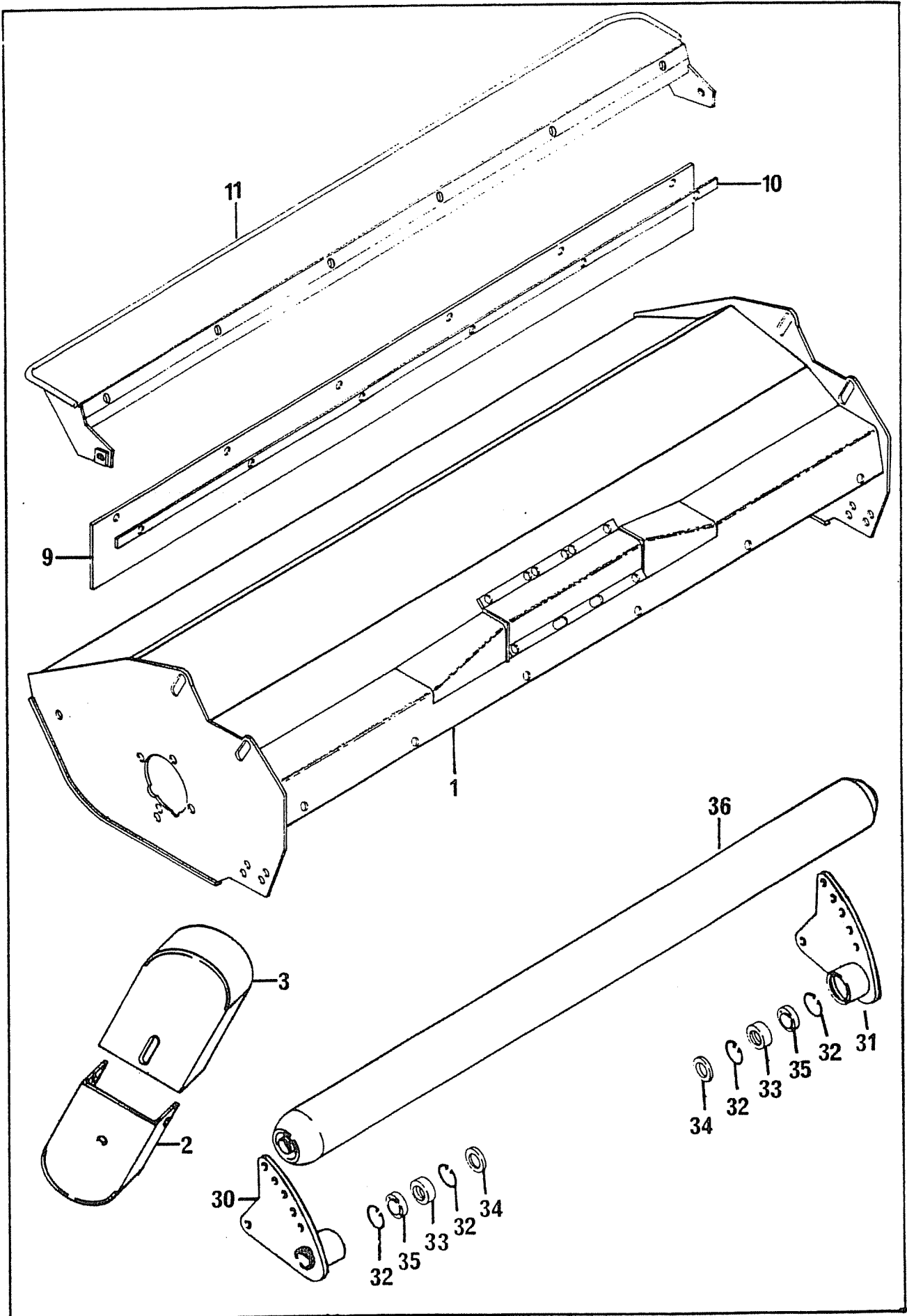
61	09.905.01	FLAIL	1) MUST BE ORDERED
62	41535.01	COLLAR	2) AS SETS
63	05.775.08	BOLT M16 X 86	1	
64	05.282.04	SPRING WASHER	1	
65	05.968.04	SELF-LOCKING NUT	1	

* MAIN PART IN GROUP, RELATED PARTS HAVE SAME REFERENCE NUMBER



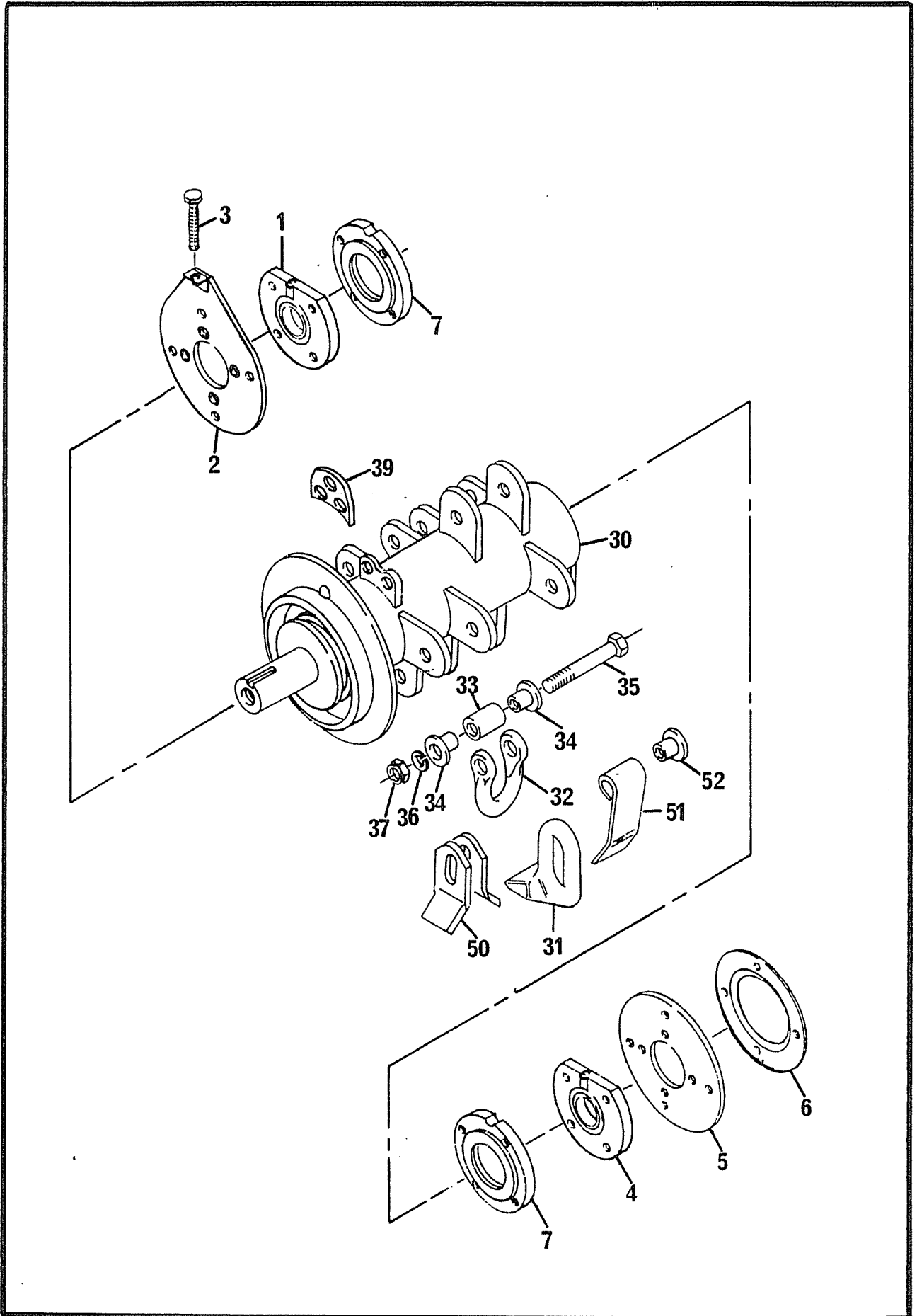
REF	PART NO.	DESCRIPTION	QTY
	72.023.01	MOTOR ASSEMBLY	
01	09.773.02	SEAL KIT 09.773.02 MOTOR	-
*01	09.773.03	MOTOR ASSY 100 L/MIN	1
02	05.290.06	BONDED SEAL 3/4" BSP	2
*03	05.373.01	ADAPTOR 3/4" BSP X 1" BSP	1
*04	05.377.01	ADAPTOR 3/4" BSP X 3/4" BSP	2
05	05.281.03	FLAT WASHER 12MM PLATED	2
05	05.282.03	SPRING WASHER 12MM PLATED	2
05	05.286.03	NUT M12 PLATED	2
05	05.625.12	CAPSCREW M12 X 35 CRSE DOMED PLT	2
*05	07.832.01	PLATE-MOTOR MOUNTING	1
*06	03.100.01	STUD M10 X 36MM	2
06	05.282.02	SPRING WASHER 10MM PLATED	2
06	05.286.02	NUT M10 PLATED	2
07	05.299.36	V-BELT XPA 1060 QUAD POWER	3
08	03.795.01	PULLEY-VEE 160MM PCD X 3 SPA	1
09	03.795.03	PULLEY-VEE 140MM PCD X 3 SPA	1
10	05.424.01	TAPER-LOCK 1"BORE (2517)	1
11	05.424.07	TAPER-LOCK 40MM (2517)	1
12	05.960.16	KEY-S/REP 12MM X 8MM X 40MM	1
13	07.833.01	PLATE-COVER	1

*MAIN PART IN GROUP. RELATED PARTS HAVE SAME REFERENCE NUMBER



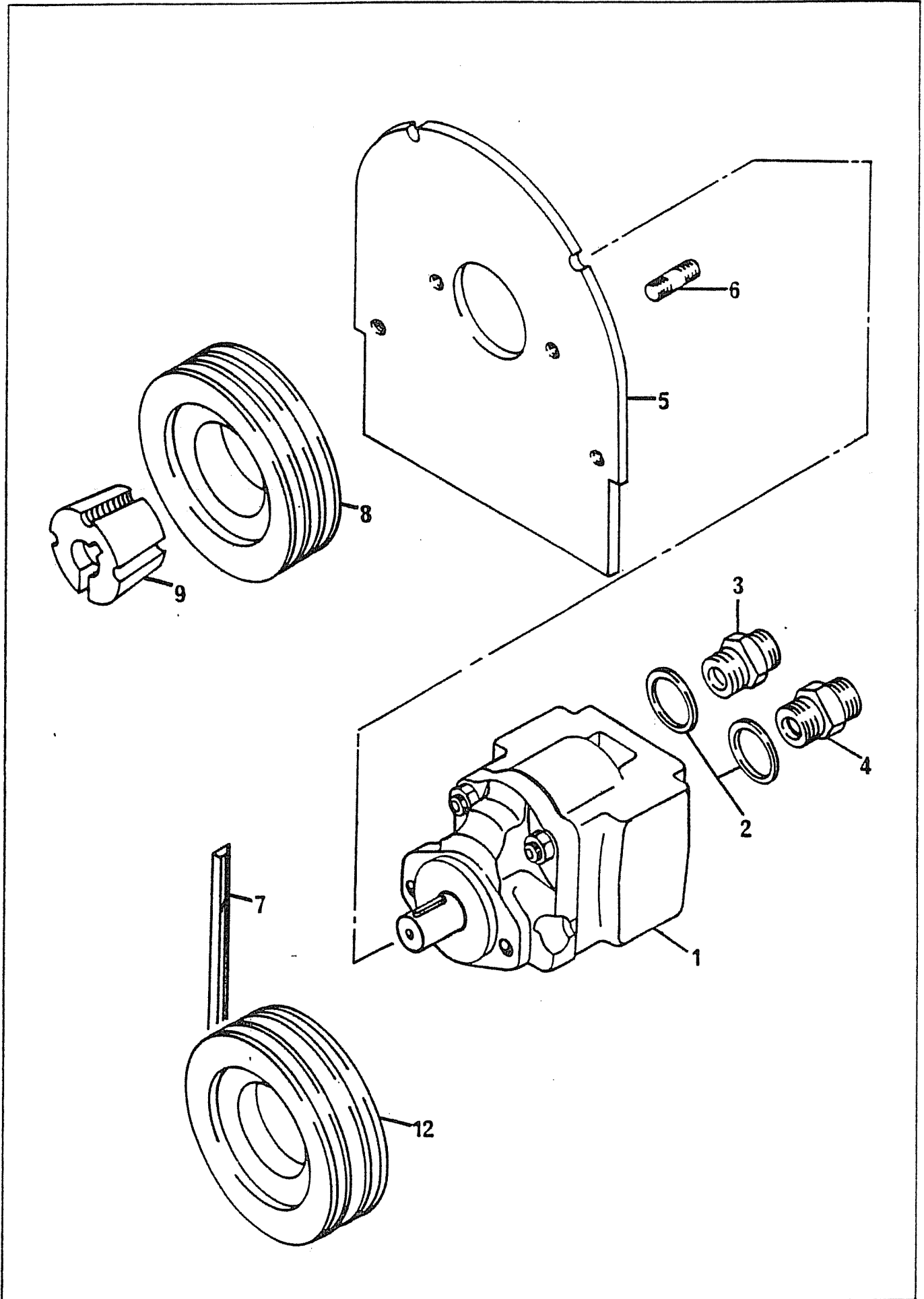
REF	PART NO.	DESCRIPTION	QTY	SERIAL NO. FROM - TO
71.368.01, 71.772.01		COWL ASSEMBLY		
01	05.227.01	HAMMER DRIVE SCREW NO.6 X 1/2"	2	
01	05.774.01	SERIAL NUMBER PLATE	1	
*01	06.549.01	COWL - 1510	1	--> 2934ZA
01	08.314.01	COWL - 1510	1	2935ZA -->
02	05.264.21	SETSCREW M12 X 20MM PLATED	1	
02	05.281.03	FLAT WASHER 12MM PLATED	1	
02	05.282.03	SPRING WASHER 12MM PLATED	2	
02	05.286.03	NUT M12 PLATED	1	
*02	06.205.01	GUARD - BOTTOM DRIVE	1	
03	05.264.21	SETSCREW M12 X 20MM PLATED	2	
03	05.282.03	SPRING WASHER 12MM PLATED	2	
*03	06.222.01	GUARD - TOP DRIVE	1	
*09	06.545.01	GUARD - REAR	1	
10	05.264.03	SETSCREW M8 X 30MM PLATED	6	
10	05.282.01	SPRING WASHER 8MM PLATED	6	
10	05.286.01	NUT M8 PLATED	6	
*10	06.546.01	BACKING STRIP - REAR GUARD	1	
*11	07.164.01	GUARD - FRONT	1	
11	05.264.22	SETSCREW M12 X 25MM	2	
11	05.282.03	SPRING WASHER M12	2	
11	05.286.03	NUT M12	2	
72.123.01, 72.122.01		ROLLER ASSEMBLY		
30	05.264.24	SETSCREW M12 X 35MM PLATED	3	
30	05.281.03	FLAT WASHER 12MM PLATED	3	
30	05.282.03	SPRING WASHER 12MM PLATED	3	
30	05.287.03	SELF - LOCKING NUT M12 PLATED	3	
*30	07.823.01	BRACKET - ROLLER 115 LH	1	2935ZA -->
	07.822.01	BRACKET - ROLLER 150 LH	1	2935ZA -->
31	05.264.24	SETSCREW M12 X 35MM PLATED	3	
31	05.281.03	FLAT WASHER 12MM PLATED	3	
31	05.282.03	SPRING WASHER 12MM PLATED	3	
31	05.287.03	SELF - LOCKING NUT M12 PLATED	3	
*31	07.823.02	BRACKET - ROLLER 115 RH	1	2935ZA -->
	07.822.02	BRACKET - ROLLER 150 RH	1	2935ZA -->
*32	05.959.05	CIRCLIP - INT 62MM DIA	4	
*33	03.007.02	BEARING - BALL 30MM BORE	2	
*34	04.164.04	SEAL - LIP 40DIA X 10MM	2	
*35	04.394.01	FLANGE - BEARING RETAINER PLATED	2	
35	05.953.01	GREASE NIPPLE M6	4	
36	05.234.01	WASHER 1.3/4" X 17/32" X 3/16"	2	
36	05.264.23	SETSCREW M12 X 30MM PLATED	2	
36	05.282.03	SPRING WASHER 12MM PLATED	2	
*36	06.752.02	ROLLER 115 DIA - 1500	1	2935ZA -->
	07.826.02	ROLLER 150 DIA - 1500	1	2935ZA -->
30	06.204.01	ROLLER BRACKET N.I.	2	--> 2934ZA
*35	41851.01	CAP BEARING RETAINER	2)	From Serial No.
36	05.625.10	SKT CAPSCREW M12 X 30 DOMED	2)	2024G/96

* MAIN PART IN GROUP, RELATED PARTS HAVE SAME REFERENCE NUMBER



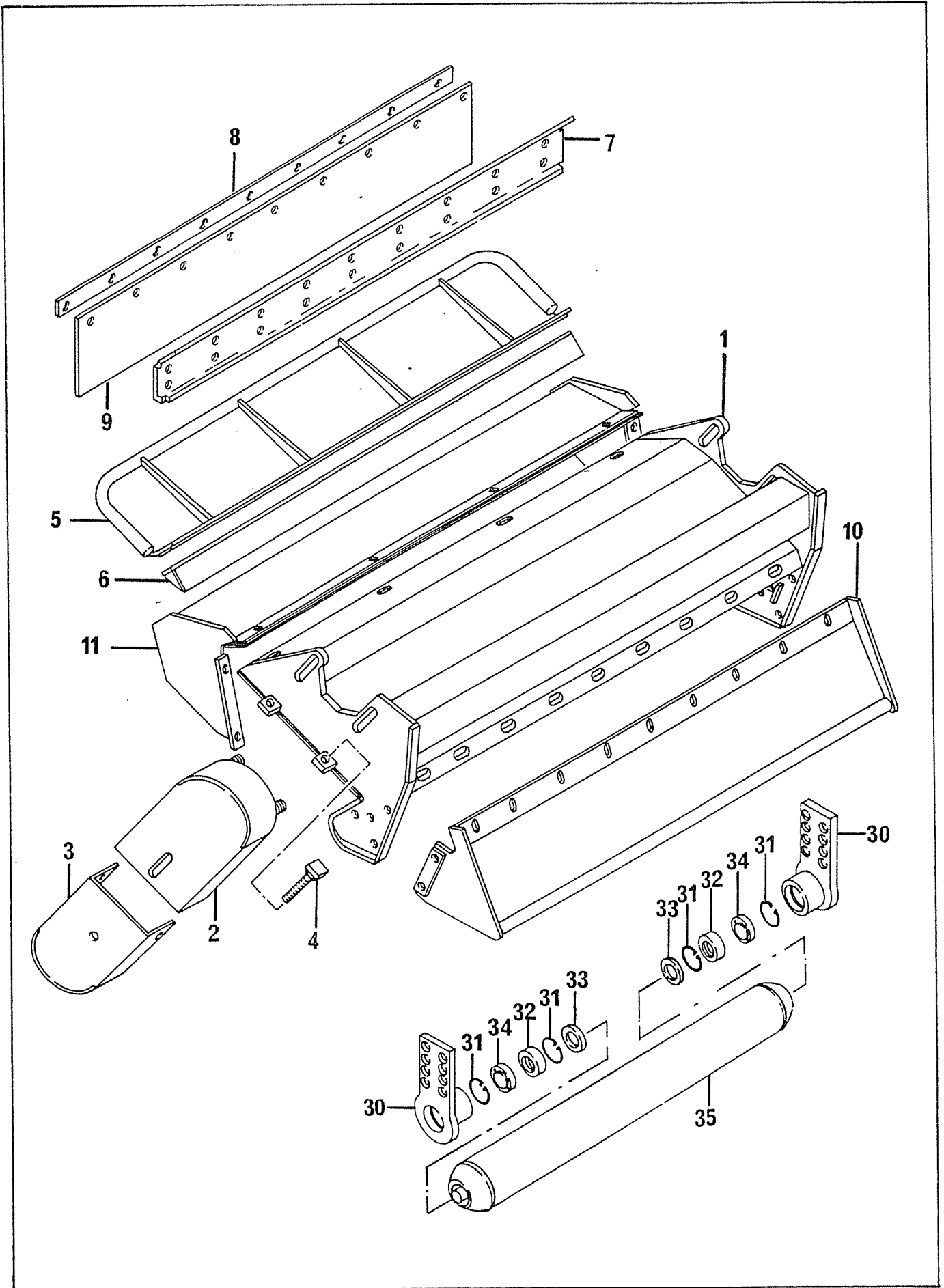
REF	PART NO.	DESCRIPTION	QTY	SERIAL NO. FROM - TO
71.025.02		BEARING ASSEMBLY		
01	05.345.05	SOCKET CSK SCREW M12 X 1.75 X 40	4	
*01	06.221.01	BEARING ASSEMBLY 40 - BORE	1	
01	02.824.01	WASHER 50 O/D X 13 I/D X 5MM	1	
01	05.264.23	SETSCREW M12 X 30MM PLATED	1	
01	05.283.03	SHAKEPROOF WASHER 12MM PLATED	1	
02	05.282.03	SPRING WASHER 12MM PLATED	4	
02	05.286.03	NUT M12 PLATED	4	
02	05.625.10	SKT CAP SCREW M12 X 30 DOME HEAD	4	
*02	06.193.01	PLATE - BEARING DRIVE END	1	
03	05.286.03	NUT M12 PLATED	2	
*03	06.220.01	BOLT - ADJUSTING	1	
04	05.264.24	SETSCREW M12 X 35MM PLATED	4	
04	05.282.03	SPRING WASHER 12MM PLATED	4	
*04	06.221.01	BEARING ASSEMBLY 40 - BORE	1	
04	02.824.01	WASHER 50 O/D X 13 I/D X 5MM	1	
04	05.264.23	SETSCREW M12 X 30MM PLATED	1	
04	05.283.03	SHAKEPROOF WASHER 12MM PLATED	1	
05	05.282.03	SPRING WASHER 12MM PLATED	4	
05	05.286.03	NUT M12 PLATED	4	
05	05.625.10	SKT CAP SCREW M12 X 30 DOME HEAD	4	
*05	06.197.01	PLATE - BEARING NON DRIVE	1	
*06	06.195.01	GUARD - NON DRIVE	1	
*07	06.219.01	DISC - SHIELD	2	
71.369.02, 71.716.02		ROTOR SHAFT ASSEMBLY - TUBULAR		
	06.552.01	ROTOR SHAFT ASSEMBLY COMPLETE, COMPRISING ITEMS 30, 32 TO 37, 39, 50		
	07.080.01	ROTOR SHAFT ASSEMBLY COMPLETE, COMPRISING ITEMS 30 - 39		
*30		SHAFT - 1510 TUBULAR	1	
*31	02.959.01	FLAIL - FORGED	44	
*32	05.895.01	SHACKLE-FORGED	44	
*33	02.807.01	SPACER 1"O/D X 16MM I/D X 7MM	44	
*34	02.801.01	COLLAR 30 O/D X 24	88	
*35	05.775.02	BOLT M10 X 86MM (FINE)	44	
*36	05.282.02	SPRING WASHER 10MM PLATED	44	
*37	05.968.02	SELF LOCKING NUT M10 (FINE)	44	
*39	06.550.01	LUG - BOLT ON	2	
39	05.291.01	BOLT M8 X 30MM PLATED	4	
39	05.286.01	NUT M8 PLATED	4	
39	05.282.01	SPRING WASHER 8MM PLATED	4	
*50	02.812.01	FLAIL - FORMED	88	
*51	06.189.01	FLAIL - FORMED	44	SPARES ONLY
*52	06.192.02	COLLAR 30 O/D X 21	88	SPARES ONLY

* MAIN PART IN GROUP, RELATED PARTS HAVE SAME REFERENCE NUMBER



REF	PART NO.	DESCRIPTION	QTY	SERIAL NO. FROM - TO
72.023.01		MOTOR ASSEMBLY		
01	09.773.02	SEAL KIT 02.773.02 MOTOR	-	
*01	09.773.03	MOTOR ASSY 100 L/MIN	1	
*02	05.290.06	BONDED SEAL 3/4" BSP	2	
*03	05.373.01	ADAPTOR 3/4" BSP X 1" BSP	1	
*04	05.377.01	ADAPTOR 3/4" BSP X 3/4" BSP	1	
05	05.281.03	FLAT WASHER 12MM PLATED	2	
05	05.282.03	SPRING WASHER 12MM PLATED	2	
05	05.286.03	NUT M12 PLATED	2	
05	05.625.12	CAPSCRW M12 X 35 CRSE DOMED PLT	2	
*05	07.832.01	PLATE - MOTOR MOUNTING	1	2935ZA -->
05	06.200.01	PLATE - MOTOR MOUNTING	1	--> 2934ZA
*06	03.100.01	STUD M10 X 36MM	2	
06	05.282.02	SPRING WASHER 10MM PLATED	2	
06	05.286.02	NUT M10 PLATED	2	
*07	05.299.36	V - BELT XPA 1060 QUAD POWER	3	
*08	03.795.01	PULLEY - VEE 160MM PCD X 3 SPA	1	
*09	03.795.03	PULLEY - VEE 140MM PCD X 3 SPA	1	
*10	05.424.07	TAPER - LOCK 1" BORE (2517)	1	
*11	05.424.18	TAPER - LOCK 40MM (2517)	1	
*12	05.960.16	KEY - S/REP 12MM X 8MM X 40MM	1	
*13	07.833.01	PLATE - COVER	1	

*MAIN PART IN GROUP, RELATED PARTS HAVE SAME REFERENCE NUMBER



REF	PART NO.	DESCRIPTION	QTY	SERIAL NO. FROM - TO
71.045.03		COWL-ISMP		
*01	04.247.03	COWL 1100 - ISMP	1	
01	05.227.01	HAMMER DRIVE SCREW NO.6 X 3/8"	2	
01	05.774.04	SERIAL NO. PLATE (BOMFORD)	1	
*02	04.153.01	GUARD - DRIVE BELT (TOP)	1	
02	05.281.03	FLAT WASHER 12MM PLATED	2	
02	05.282.03	SPRING WASHER 12MM PLATED	2	
02	05.286.03	NUT M12 PLATED	2	
*03	04.249.01	GUARD - BELT DRIVE(BTM)	1	
03	05.264.22	SETSCREW M12 X 25MM PLATED	1	
03	05.281.03	FLAT WASHER 12MM PLATED	1	
03	05.282.03	SPRING WASHER 12MM PLATED	2	
03	05.286.03	NUT M12 PLATED	1	
*04	04.155.01	SPECIAL BOLT M12 X 110	2	
04	05.286.03	NUT M12 PLATED	4	2) 2)
*05	03.767.04	GUARD-FRONT 1100MM	1	
05	05.264.13	SETSCREW M10 X 30MM PLATED	2	
05	05.281.02	FLAT WASHER 10MM PLATED	4	
05	05.287.03	SELF-LOCKING NUT M10 PLATED	2	
*06	03.768.01	BRACKET-WIRE CUTTER 1100MM	1	
*07	06.901.01	GUARD ANGLE	1	
*08	00.883.02	BACKING STRIP	1	
08	05.287.01	SELF-LOCKING NUT M8 PLATED	9	
08	05.291.01	BOLT M8 X 30MM PLATED	9	
*09	00.875.05	GUARD-PLASTIC	1	
*10	04.250.01	GUARD-REAR	1	
10	05.264.13	SETSCREW M10 X 30MM PLATED	9	
10	05.264.23	SETSCREW M12 X 30MM PLATED	4	
10	05.281.02	FLAT WASHER 10MM PLATED	18	
10	05.282.03	SPRING WASHER 12MM PLATED	4	
10	05.286.03	NUT M12 PLATED	4	
10	05.287.02	SELF-LOCKING NUT M10 PLATED	9	
*11	04.261.10	GUARD-FRONT HOOD	1	
11	05.264.14	SETSCREW M10 X 35MM PLATED	8	
11	05.281.02	FLAT WASHER 10MM PLATED	8	
11	05.282.02	SPRING WASHER 10MM PLATED	8	
11	05.286.02	NUT M10 PLATED	8	
72.125.01		ROLLER ASSEMBLY		
*30	04.387.01	BRACKET - ROLLER	2	
30	05.264.25	SETSCREW M12 X 40MM PLATED	8	
30	05.282.03	SPRING WASHER 12MM PLATED	8	
30	05.287.03	SELF-LOCKING NUT M12 PLATED	8	
*31	05.959.05	CIRCLIP - INT 62MM DIA	4	
*32	03.007.02	BEARING - BALL 30MM BORE	2	
*33	04.164.04	SEAL-LIP 40DIA X 10MM	2	
*34	04.394.01	FLANGE-BEARING RETAINER	2	
34	05.953.01	GREASE NIPPLE M6	4	
*35	04.388.01	ROLLER 114 DIA X 1100MM	1	
35	05.234.01	WASHER 1.3/4" X 17/32" X 3/16"	2	
35	05.264.23	SETSCREW M12 X 30MM PLATED	2	
35	05.282.03	SPRING WASHER 12MM PLATED	2	
35	06.183.01	ROLLER PROD. ASSY	-	(INC.REF 30-35)

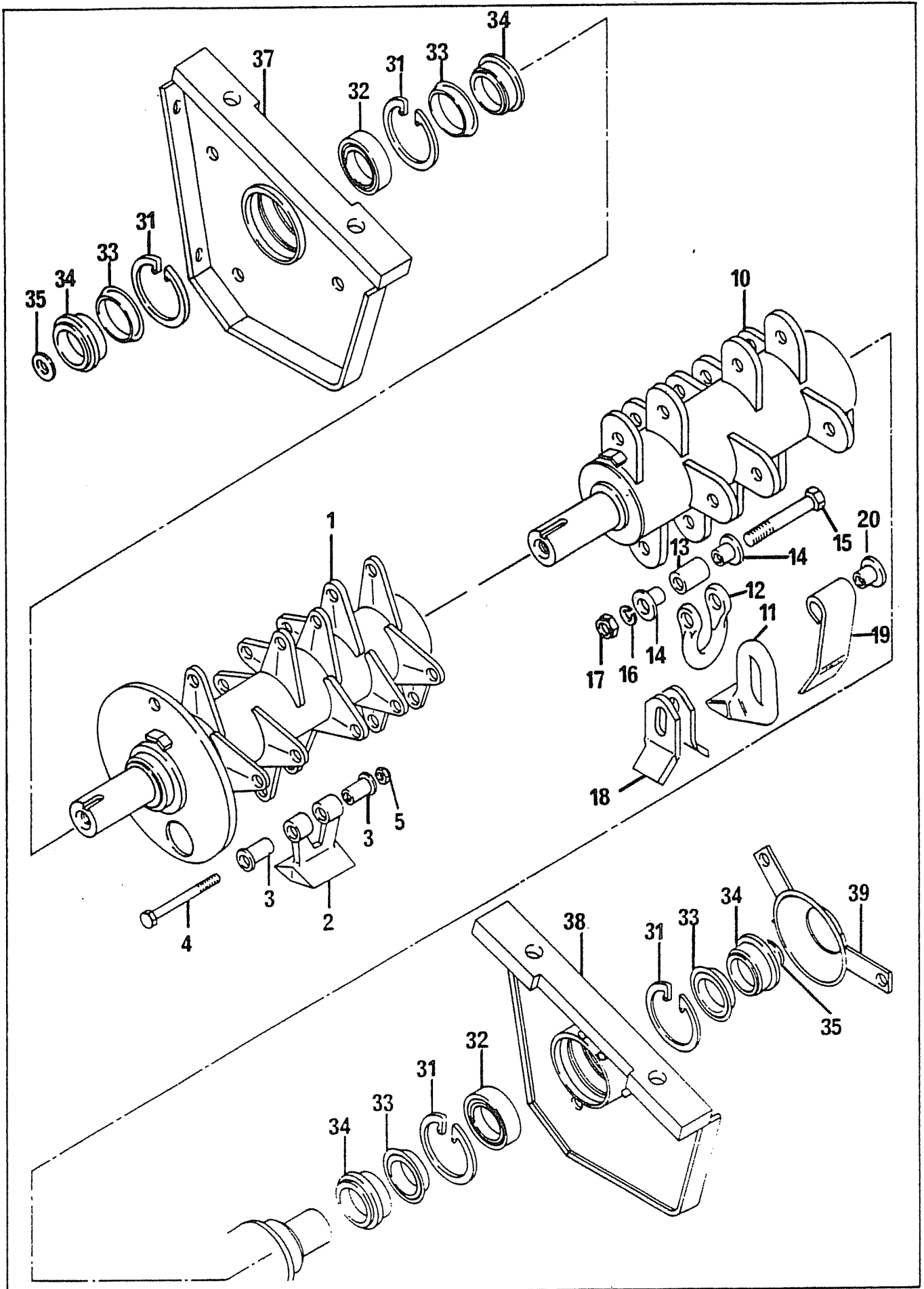
From Serial No.
2024G/96

2) 2)
CAP BEARING RETAINER
SKT CAPSCREW M12 X 30 DOMED

41851.01
05.625.10

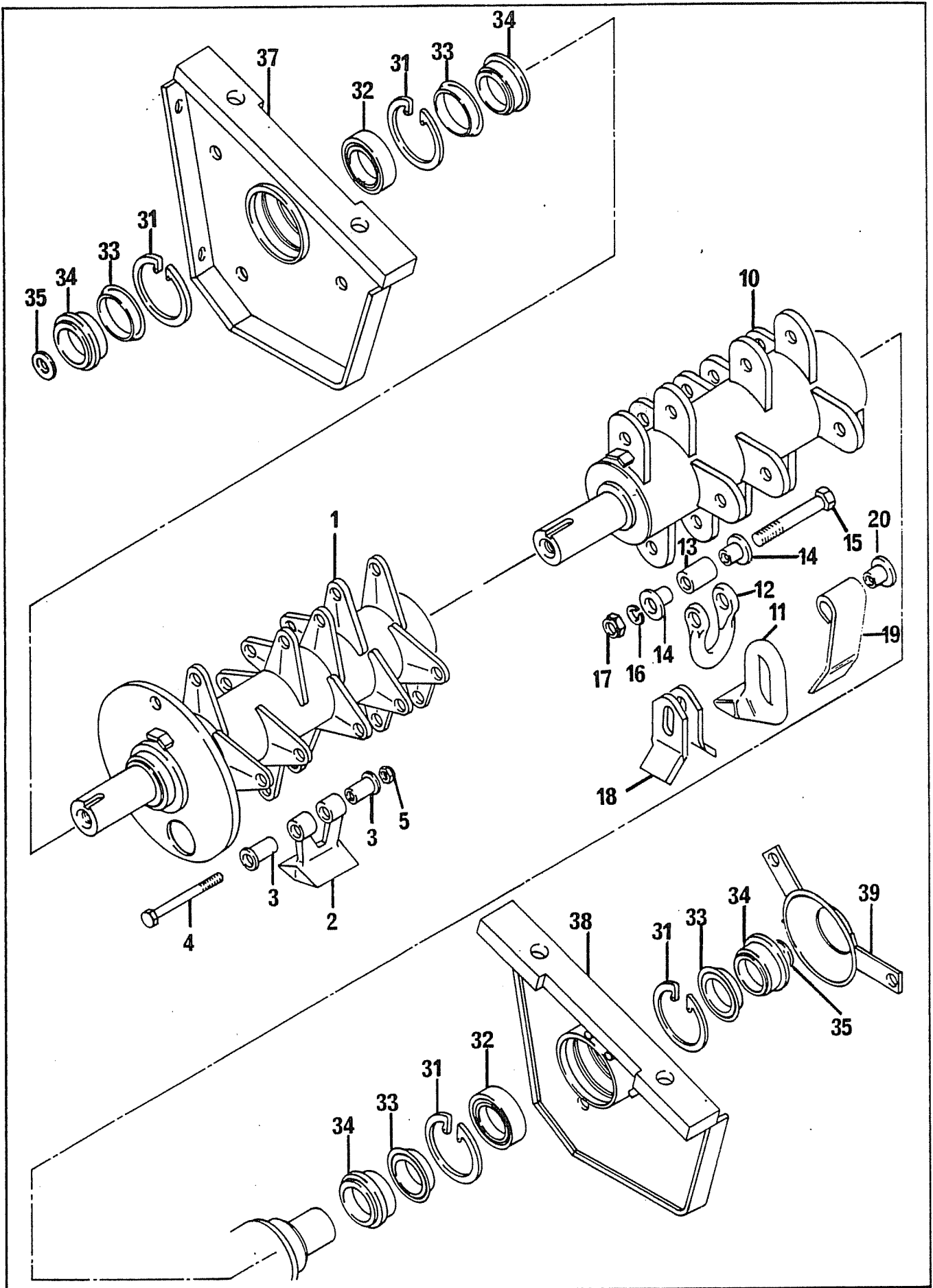
*35.
36

* MAIN PART IN GROUP, RELATED PARTS HAVE SAME REFERENCE NUMBER



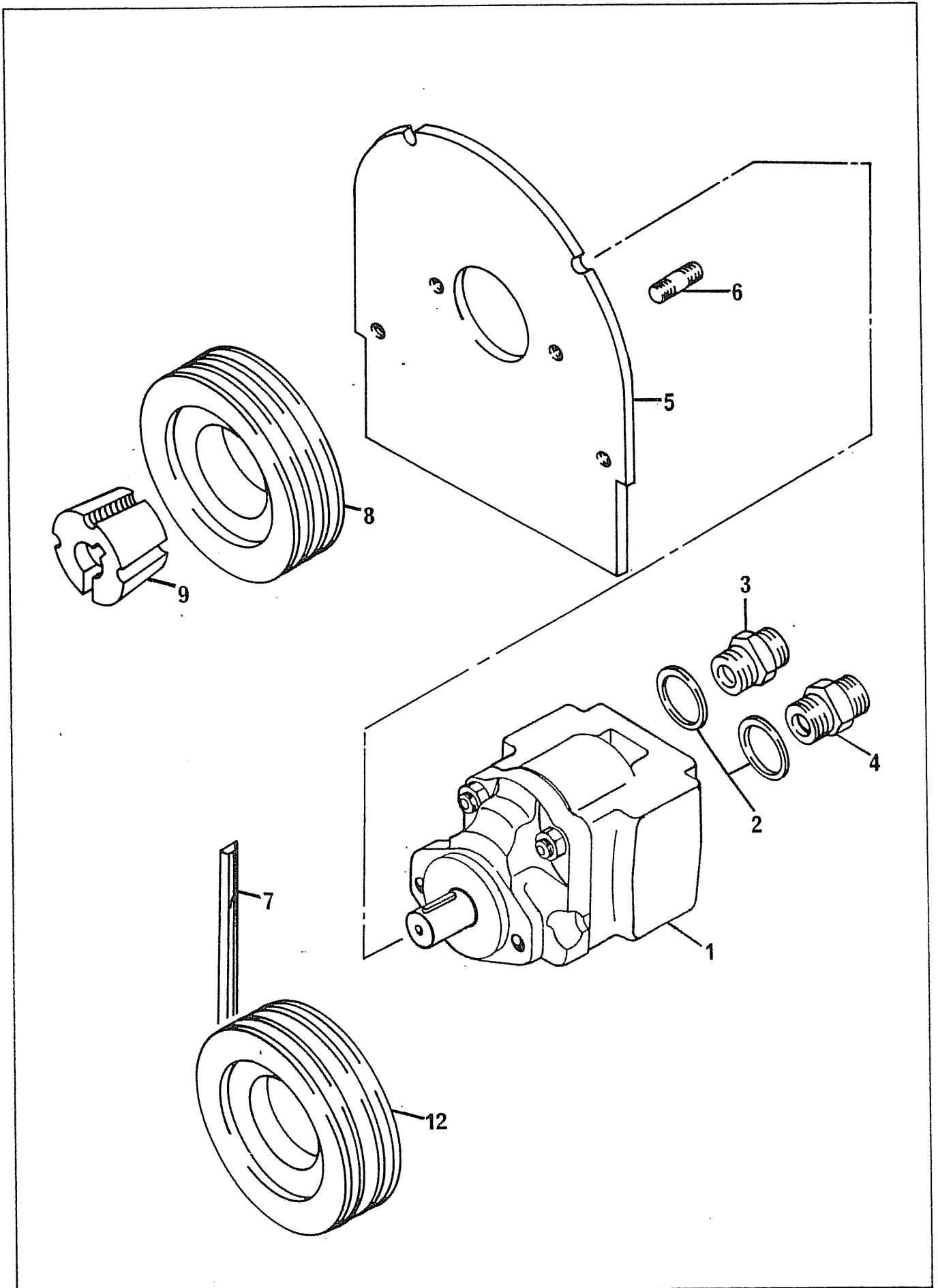
REF	PART NO.	DESCRIPTION	QTY	SERIAL NO. FROM - TO
	04.551.01	ROTOR SHAFT ASSEMBLY COMPLETE CLOCKWISE FLAIL ROTATION VIEWED FROM DRIVE END COMPRISING ITEMS 10 TO 17		
	04.551.02	ROTOR SHAFT ASSEMBLY COMPLETE ANTI-CLOCKWISE FLAIL ROTATION VIEWED FROM DRIVE END COMPRISING ITEMS 10 TO 17		
	04.551.03	ROTOR SHAFT ASSEMBLY COMPLETE COMPRISING ITEMS 10, 12 TO 18		
	04.550.01	ROTOR SHAFT ASSEMBLY COMPLETE COMPRISING ITEMS 01 TO 05		
		ROTOR SHAFT ASSEMBLY - BUSHMASTER		71.068.01
*01		ROTOR SHAFT 1100MM BUSHMASTER	1	
*02	03.958.01	FLAIL-FORGED	24	
*03	03.437.01	COLLAR 30 O/D X 45	48	
*04	05.411.01	BOLT-1/2"UNF X 4.7/8"	24	
*05	05.295.04	S.LOCKING NUT 1/2"UNF PLATED	24	
		ROTOR SHAFT ASSEMBLY - TUBULAR		71.070.01
*10		ROTOR SHAFT 1100MM	1	
*11	02.959.01	FLAIL - FORGED	32	
*12	05.895.01	SHACKLE-FORGED	32	
*13	02.807.01	SPACER 1"O/D X 16MM I/D X 7MM	32	
*14	02.801.01	COLLAR 20 O/D X 26	64	
*15	05.775.02	BOLT M10 X 86M (FINE)	32	
*16	05.282.02	SPRING WASHER 10MM PLATED	32	
*17	05.968.02	SELF LOCKING NUT M10 (FINE)	32	
*18	02.812.01	FLAIL-FORMED 40 X 6	64	
*19	06.189.01	FLAIL-FORMED 40 X 8	32	SPARES ONLY
*20	06.192.02	COLLAR 26 O/D X 21	64	" "

* MAIN PART IN GROUP, RELATED PARTS HAVE SAME REFERENCE NUMBER



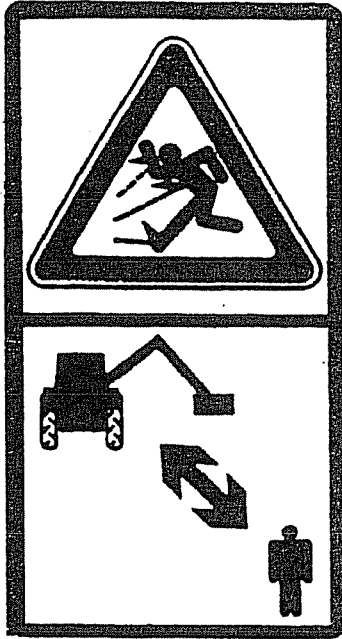
REF	PART NO.	DESCRIPTION	QTY	SERIAL NO. FROM - TO
71.078.02		BEARING ASSEMBLY - ISMP HEAD		
31	05.959.07	CIRCLIP - INT 85MM DIA	4	
32	04.163.04	BEARING-SPH.ROLLER 45MM BORE	2	
*33	06.909.01	SPACER-SEAL	4	
*34	06.910.01	COLLAR-SEAL	4	
*35	04.252.01	WASHER 65 O/D X 17 I/D X 8MM	2	
35	05.264.33	SETSCREW M16 X 30MM PLATED	2	
35	05.283.04	SHAKEPROOF WASHER 16MM PLATED	2	
*37	04.248.01	BEARING HOUSING L.H.	1	
37	04.549.03	LH BEARING/HOUSING PROD.ASSY	-	
37	05.252.34	BOLT 5/8"UNF X 2"PLATED	2	
37	05.282.04	SPRING WASHER 16MM PLATED	2	
37	05.295.05	S.LOCKING NUT 5/8"UNF PLATED	2	
37	05.953.03	GREASE NIPPLE M10	1	
*38	04.248.02	BEARING HOUSING R.H.	1	
38	04.549.04	RH BEARING/HOUSING PROD.ASSY	-	
38	05.252.34	BOLT 5/8"UNF X 2"PLATED	2	
38	05.282.04	SPRING WASHER 16MM PLATED	2	
38	05.295.05	S.LOCKING NUT 5/8"UNF PLATED	2	
38	05.953.03	GREASE NIPPLE M10	1	
*39	04.255.01	GUARD-BEARING	1	
39	05.264.22	SETSCREW M12 X 25MM PLATED	2	
39	05.282.03	SPRING WASHER 12MM PLATED	2	
39	05.286.03	NUT M12 PLATED	2	

*MAIN PART IN GROUP, RELATED PARTS HAVE SAME REFERENCE NUMBER

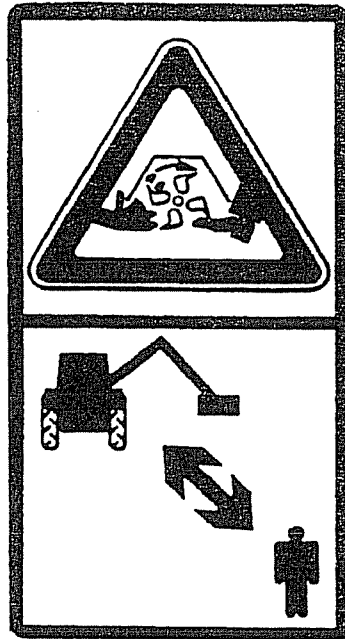


REF	PART NO.	DESCRIPTION	QTY	SERIAL NO. FROM - TO
72.049.01		MOTOR ASSEMBLY - ISMP HEAD		
01	09.773.02	SEAL KIT FOR 09.773.02 MOTOR	-	
01	09.773.03	MOTOR ASSY 100 L/MIN	1	
*01	08.063.01	DECAL - "100l/min" SMALL	1	
*02	05.290.06	BONDED SEAL 3/4" BSP	2	
*03	05.373.01	ADAPTOR 3/4"BSP X 1"BSP	1	
*04	05.377.01	ADAPTOR 3/4"BSP X 3/4"BSP	1	
*05	04.151.01	PLATE-MOTOR MOUNTING	1	
05	05.264.24	SETSCREW M12 X 35MM PLATED	2	
05	05.281.03	FLAT WASHER 12MM PLATED	2	
05	05.282.03	SPRING WASHER 12MM PLATED	2	
05	05.286.03	NUT M12 PLATED	2	
*06	04.282.56	STUD M10 X 37MM	2	
06	05.282.02	SPRING WASHER 10MM PLATED	2	
06	05.286.02	NUT M10 PLATED	2	
*07	05.299.36	V-BELT XPA 1060 QUAD POWER	3	
*08	03.795.01	PULLEY-VEE 160MM PCD X 3SPA	1	
*09	05.424.07	TAPER-LOCK 1" BORE (2517)	1	
*12	03.795.03	PULLEY-VEE 140MM PCD X 3SPA	1	
*13	05.424.17	TAPER-LOCK 45MM BORE (2517)	1	
*14	05.960.13	KEY-S/REP 14MM X 9MM X 45MM	1	

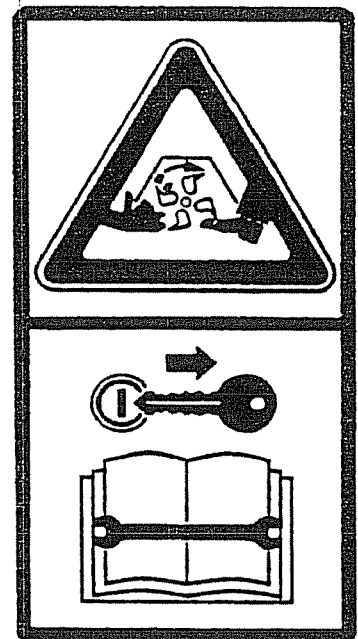
*MAIN PART IN GROUP, RELATED PARTS HAVE SAME REFERENCE NUMBER



09.821.04



09.821.05



09.821.08



09.821.10

IMPORTANT: SAFETY INSTRUCTIONS - GUARDING.
THIS MACHINE IS FITTED WITH A MOTOR REVERSING VALVE.
HEAD MUST BE GUARDED AS SHOWN.

IMPORTANT: INSTRUCTIONS DE SECURITE - PROTECTION.
CETTE MACHINE EST MUNIE D'UNE SOUPAPE D'INVERSION DE
ROTATION DU MOTEUR.
LES PROTECTIONS DOIVENT ETRE MONTEES COMME CI-DESSOUS.

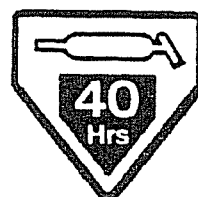
IF MOTOR DIRECTION IS CHANGED DURING WORK, BOTH ROTATION GUARD SETS MUST BE FITTED.

SI LE SENS DE ROTATION SERA CHANGE PENDANT LE TRAVAIL, LES PROTECTEURS DOIVENT ETRE MONTEES POUR LES DEUX SENS.

08.886.01



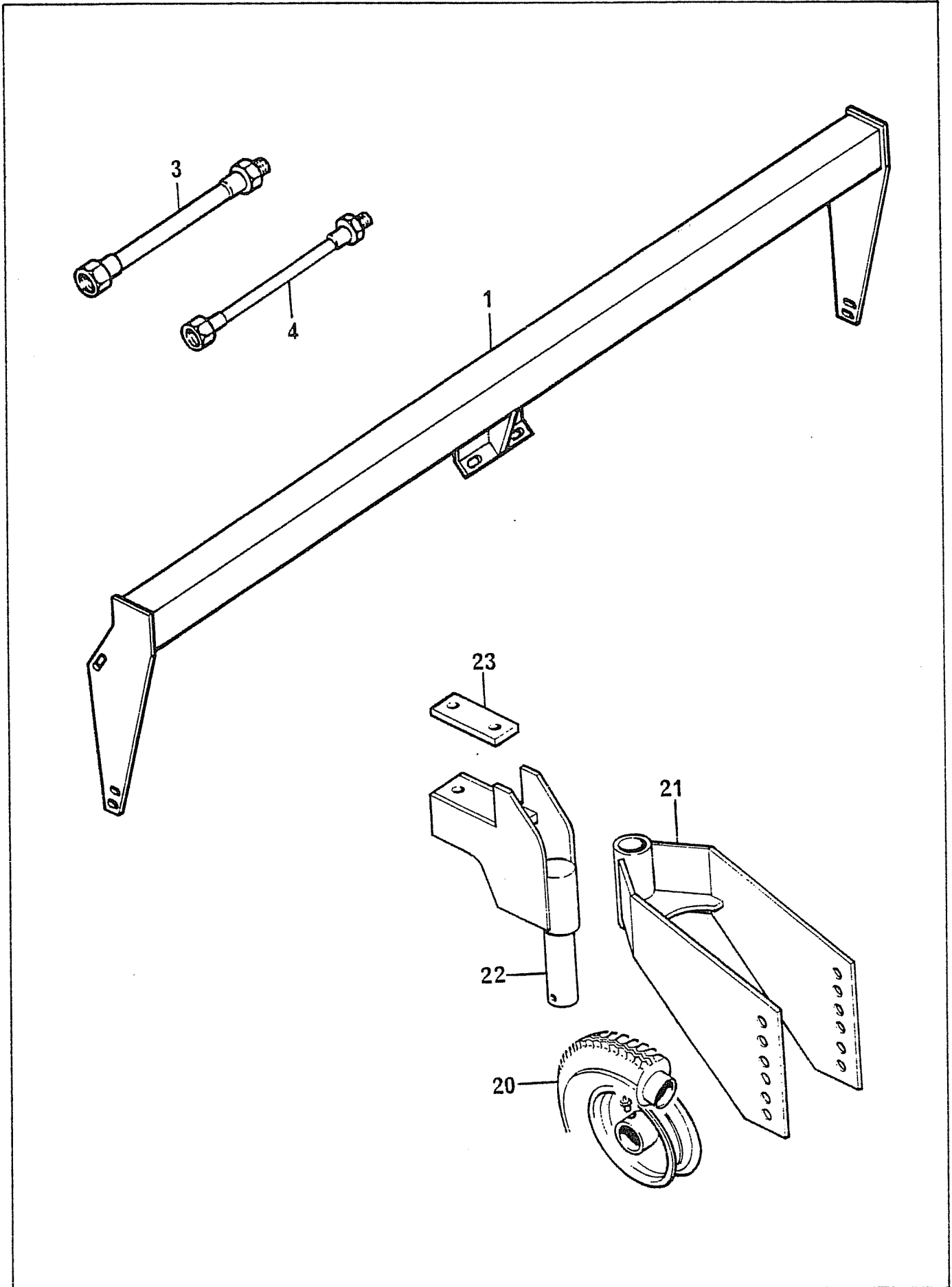
09.843.01



09.810.02

REF	PART NO.	DESCRIPTION	QTY	SERIAL NO. FROM - TO
71.017.03		DECALS - 1250 AND 1510 HEADS		
*01	08.886.01	DECAL - HEAD GUARDING	1	
*02	09.810.02	DECAL - GREASE (40 HOURS)	4	
*03	09.821.04	DECAL - DANGER THROWN DEBRIS	1	
*04	09.821.05	DECAL - CUTTING HEAD DANGER	1	
*05	09.821.08	DECAL - SAFEWORKING ON HEAD	1	
*06	09.821.10	DECAL - KEEP NUTS TIGHT	1	
*07	09.843.01	DECAL - LIFT POINT 250KG	2	

* MAIN PART IN GROUP, RELATED PARTS HAVE SAME REFERENCE NUMBER



REF	PART NO.	DESCRIPTION	QTY	SERIAL NO. FROM - TO
71.840.01		1510 SLIDE MOUNT BRACKET KIT		
01	05.264.23	SETSCREW M12 X 30MM	2	
01	05.264.25	SETSCREW M12 X 40MM	4	
01	05.281.03	FLAT WASHER 12MM PLATED	6	
01	05.287.03	SELF - LOCKING NUT	6	
*01	07.354.01	BRACKET - SLIDE MOUNT	1	
01	05.264.25	SETSCREW M12 X 40MM	4	
01	05.281.03	FLAT WASHER 12MM PLATED	4	
01	05.281.03	SPRING WASHER 12MM PLATED	4	
01	05.286.03	NUT M12 PLATED	4	
*03	04.160.01	PIPE - STEEL 1" BSP	1	
*04	04.160.03	PIPE - STEEL 3/4" BSP	1	
71.936.01		CASTOR WHEEL KIT		
*20	01.618.01	WHEEL/TYRE ASSEMBLY 4.00 X 8 4 PLY	1	
21	05.253.36	BOLT 5/8" UNF X 6" PLATED	1	
21	05.282.04	SPRING WASHER 16MM PLATED	1	
21	05.288.05	NUT 5/8" UNF PLATED	1	
*21	06.187.01	BRACKET - WHEEL CROTCH	1	
22	00.372.01	LINCH PIN	1	
22	05.281.07	FLAT WASHER 30MM	1	
*22	07.538.01	BRACKET - CLAMP	1	
23	05.282.04	SPRING WASHER 16MM PLATED	2	
23	05.286.04	NUT M16 PLATED	2	
23	05.292.34	BOLT M16 X 110MM PLATED	2	
*23	06.186.01	CLAMP	1	

* MAIN PART IN GROUP, RELATED PARTS HAVE SAME REFERENCE NUMBER