

PM 900

1108, 1508MW

CUTTING HEADS

PARTS MANUAL

ISSUE 4

IMPORTANT

NOTE HERE THE SERIAL NUMBER OF YOUR MACHINE AND ALWAYS QUOTE IT IN ANY COMMUNICATION WITH US OR YOUR DEALER. THIS IS PARTICULARLY IMPORTANT WHEN ORDERING SPARES. REMEMBER TO INCLUDE ALL NUMBERS AND LETTERS.

MACHINE SERIAL NUMBERS _____

THE INFORMATION GIVEN THROUGHOUT THIS MANUAL IS CORRECT AT THE TIME OF PUBLICATION. HOWEVER, IN THE COURSE OF CONSTANT DEVELOPMENT OF BOMFORD TURNER MACHINES, CHANGES IN SPECIFICATION ARE INEVITABLE. SHOULD YOU FIND THE INFORMATION GIVEN IN THIS BOOK TO BE AT VARIANCE WITH THE MACHINE IN YOUR POSSESSION, YOU ARE ADVISED TO CONTACT THE BOMFORD TURNER SERVICE DEPARTMENT WHERE UP-TO-DATE INFORMATION WILL BE PROVIDED.

THE MANUAL CAN CONTAIN STANDARD AND OPTIONAL FEATURES AND IS NOT TO BE USED AS A MACHINE SPECIFICATION.

THE MACHINE HAS BEEN TESTED AND IS CONSIDERED SAFE IF CAREFULLY USED. ENSURE YOUR OPERATOR IS PROPERLY TRAINED IN ITS USE AND MAINTENANCE.

IMPORTANT

NOTEZ ICI LES NUMEROS DE SERIE DE VOTRE MACHINE ET MENTIONNEZ LES DANS TOUTE COMMUNICATION AVEC NOS SERVICES OU VOTRE REVENDEUR. CECI EST IMPORTANT POUR LA COMMANDE DE PIECES DETACHEES. PENSEZ A NOTER TOUS LES NUMEROS ET TOUTES LES LETTERS.

NUMEROS DE SERIE DE LA MACHINE _____

LES INFORMATIONS DONNEES DANS CE MANUEL SONT CORRECTES CEPENDANT, DU FAIT DE DEVELOPPEMENT CONSTANT DES MACHINES BOMFORD TURNER.

CHANGEMENTS DANS LES CARACTERISTIQUES SONT INEVITABLES.

SI VOUS TROUVEZ QUE LES INFORMATIONS DONNEES NE CORRESPONDENT PAS A VOTRE MACHINE VEUILLEZ CONTACTER LE SERVICE DES REPARATIONS OU DES INFORMATIONS PLUS RECENTES VOUS SERONT DONNEES. CE MANUEL PEUT MONTRER DES CARACTERISTIQUES OPTIONNELLES ET NE PEUT PAS ETRE CONSIDERE COMME SPECIFICATION DE LA MACHINE.

CETTE MACHINE A ETE TESTEE, ET ELLE EST CONSIDEREE COMME FIABLE A CONDITION D'UNE BONNE UTILISATION. ASSUREZ-VOUS QUE VOTRE OPERATEUR EST QUALIFIE EN CE QUI CONCERNE L'UTILISATION DE LA MACHINE AINSI QUE SON ENTRETIEN.

WICHTIG

TRAGEN SIE HIER DIE SERIENNUMMERN IHRER MASCHINE EIN UND GEBEN SIE DIESE IMMER AN, WENN SIE SICH AN UNS ODER IHREN HÄNDLER WENDEN. DAS IST BESONDERS BEI ERSATZTEILBESTELLUNGEN WICHTIG. VERGESSEN SIE NICHT, ALLE ZAHLEN UND BUCHSTABEN ZU NOTIEREN.

SERIENNUMMERN DER MASCHINE _____

DIE ANGABEN IN DIESEM HANDBUCH SIND BEI VERÖFFENTLICHUNG KORREKT. AUFGRUND DER KONSTANTEN WEITERENTWICKLUNG VON BOMFORD TURNER MASCHINEN SIND JEDOCHÄNDERUGDEN IN DER SPEZIFIKATION UNVERMEIDLICH. WENN DIE INFORMATION IN DIESEM HANDBUCH NICHT MIT IHRER MASCHINE ÜBEREINSTIMMEN, NEHMEN SIE BITTE KONTAKT MIT DER BOMFORD TURNER KUNDENDIENSTABTEILUNG AUF, DIE IHNEN GERNE DIE AKTUELLEN INFORMATION ZUKOMMEN LÄSST.

DAS HANDBUCH KANN SOWOHL BESCHREIBUNGEN FÜR DIE STANDARD AUSFÜHRUNG ALS AUCH FÜR ZUBEHÖR ENTHALTEN UND IST NICHT ALS MASCHINENSPEZIFIKATION ZU VERWENDET.

DIE MASCHINE IST GETESTET UND BEI SACHGEMÄSSEM BETRIEB ALS SICHER BEFUNDEN WORDEN. SORGEN SIE DAFÜR, DASS IHR BEDIENPERSONAL IN ANWENDUNG UND WARTUNG RICHTIG GESCHULT WIRD.

NOTE: PAGE & ILLUSTRATION NUMBERS SHOWN ARE USED ONLY FOR REFERENCE PURPOSES AND SHOULD NOT BE USED FOR ORDERING SPARE PARTS. PLEASE GIVE FULL PART NUMBER AND DESCRIPTION WHEN ORDERING SPARE PARTS.

FOR MACHINE WITH SERIAL NUMBERS COMMENCING FROM:

HEAD 1108 MW **1021 UA**

HEAD 1508 MW **2001 UA**

PAGE NO.	TITLE	SCHEDULE NO.
* 2-1 to 2-3	COWL ASSEMBLY 1108MW	71.022.02
	COWL ASSEMBLY 1108MW	71.033.01
	COWL ASSEMBLY 1108MW	71.035.01
	SKID ASSEMBLY	71.023.01
	ROLLER ASSEMBLY	71.024.02
		72.120.01
		72.121.01
3-1 to 3-2	COWL ASSEMBLY 1508MW	71.368.02
		71.772.01
	ROLLER ASSEMBLY	71.367.02
		72.122.01
		72.123.01
* 4-1 to 4-3	ROTOR SHAFT ASSEMBLY 1108MW	71.026.04
	ROTOR SHAFT ASSEMBLY 1108MW	71.308.01
	ROTOR SHAFT ASSEMBLY 1108MW	71.309.01
	BEARING ASSEMBLY	71.025.01
5-1 to 5-2	ROTOR SHAFT ASSEMBLY 1508MW	71.369.02
		71.716.02
	BEARING ASSEMBLY	71.025.02
6-1 to 6-2	MOTOR ASSEMBLY 1108MW	71.124.01
7-1 to 7-2	MOTOR ASSEMBLY 1508MW	71.124.01
		71.773.01
8-1 to 8-2	DECALS 1108MW AND 1508MW	71.015.03
		71.370.03
9-1 to 9-2	OPTIONAL EXTRAS - 1508MW SLIDE MOUNT BRACKET KIT	71.840.01
	CASTOR WHEEL ASSEMBLY	71.936.01

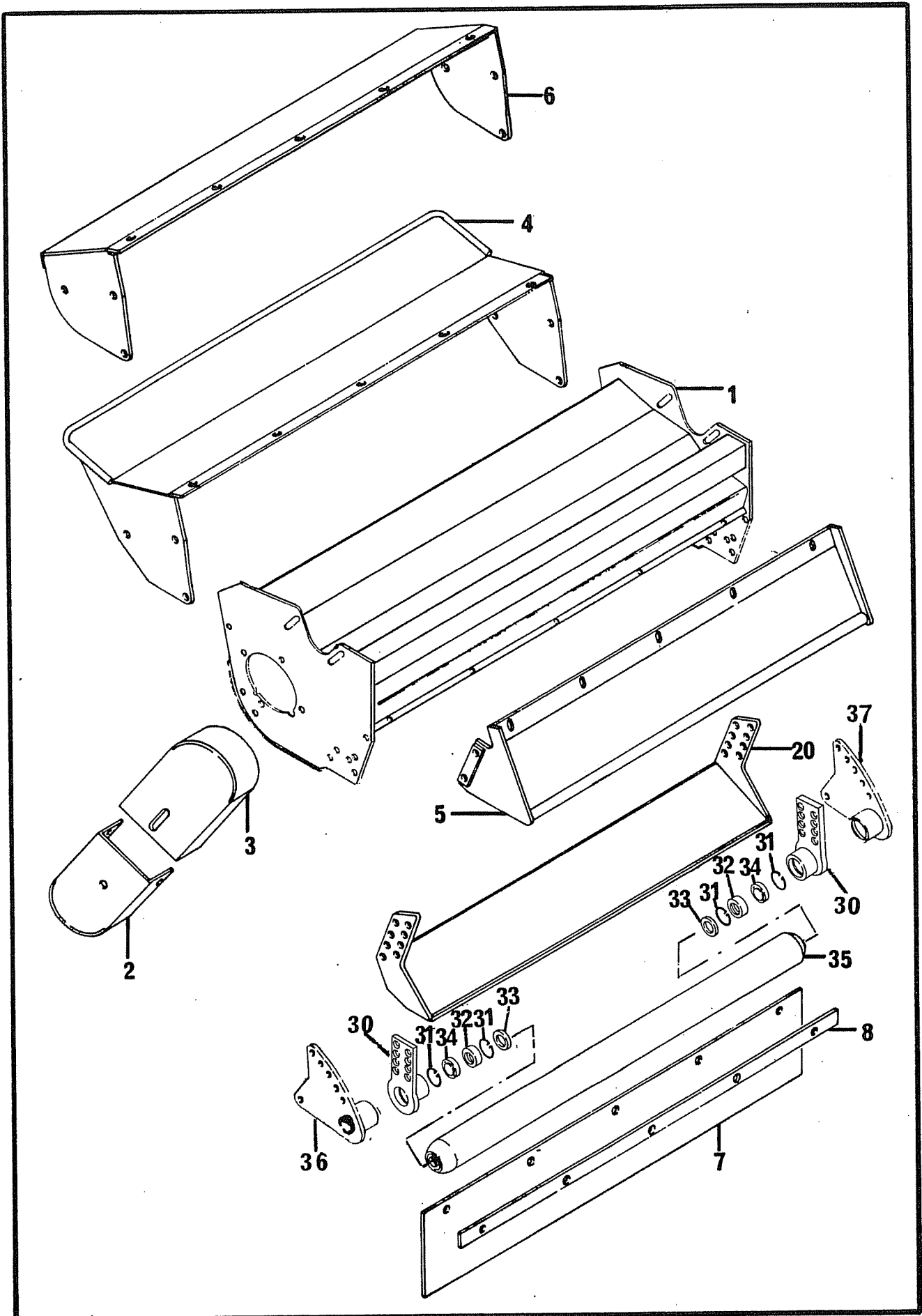
IMPORTANT

IT IS POTENTIALLY HAZARDOUS TO FIT OR USE
ANY PARTS OTHER THAN GENUINE BOMFORD TURNER PARTS.

THE COMPANY DISCLAIMS ALL LIABILITY FOR THE
CONSEQUENCES OF SUCH USE, WHICH IN ADDITION
VOIDS THE MACHINE WARRANTY.

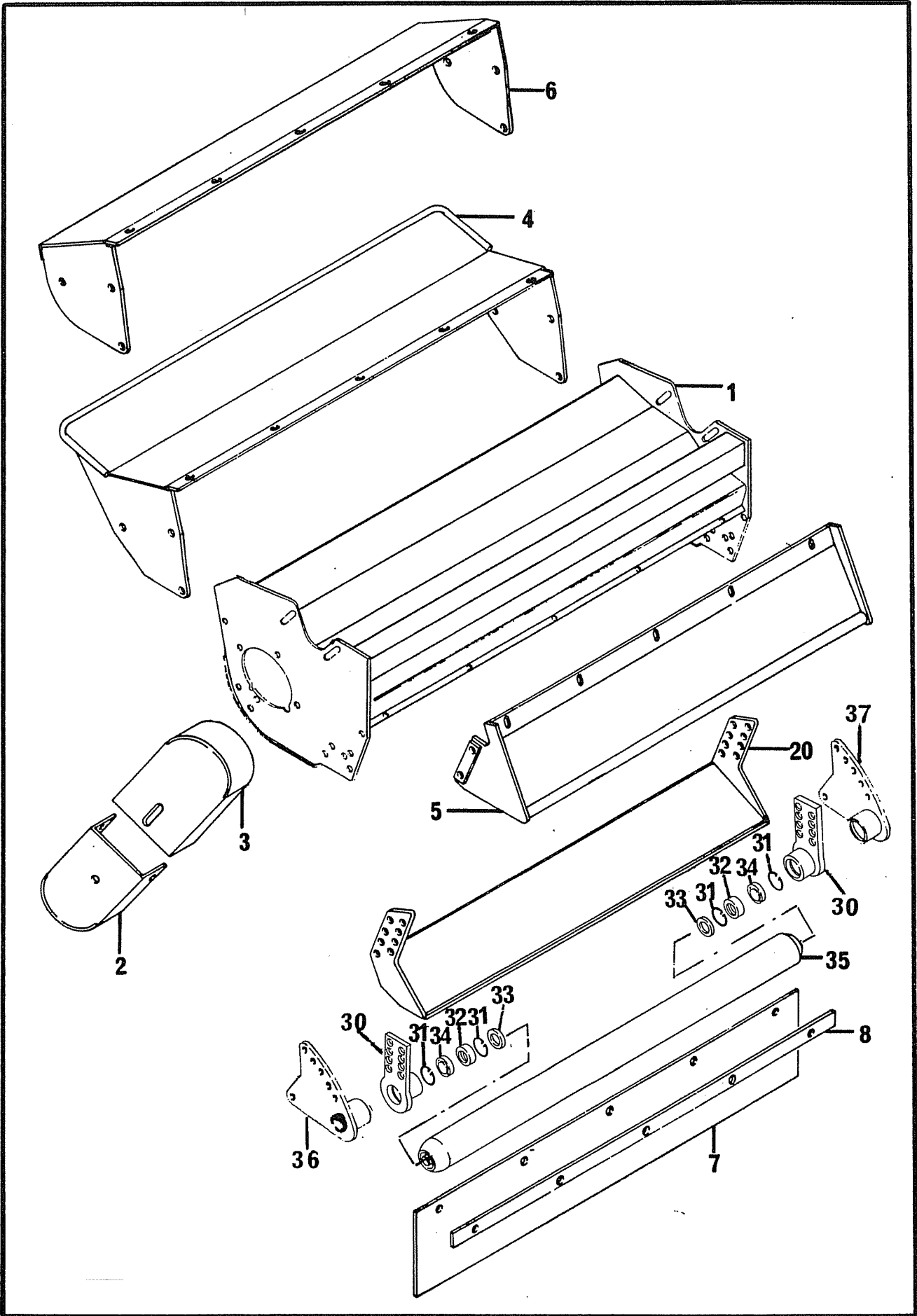
THIS MACHINE IS FOR VEGETATION CONTROL AND
MUST NOT BE USED FOR ANY OTHER PURPOSE

CHECK REAR OF MANUAL FOR UPDATES



REF	PART NO.	DESCRIPTION	QTY	SERIAL NO. FROM - TO
71.022.02, 71.033.01, 71.035.01		COWL ASSEMBLY		
01	05.227.01	HAMMER DRIVE SCREW NO.6 X 1/2"	2	
01	05.774.01	SERIAL NUMBER PLATE	1	
*01	06.198.01	COWL-1100	1	--> 3600ZA
*01	08.313.01	COWL 1100	1	3800 ZA -->
02	05.264.21	SETSCREW M12 X 20MM PLATED	1	
02	05.281.03	FLAT WASHER 12MM PLATED	1	
02	05.282.03	SPRING WASHER 12MM PLATED	2	
02	05.286.03	NUT M12 PLATED	1	
*02	06.205.01	GUARD-BOTTOM DRIVE	1	
03	05.264.21	SETSCREW M12 X 20MM PLATED	2	
03	05.282.03	SPRING WASHER 12MM PLATED	2	
*03	06.222.01	GUARD-TOP DRIVE	1	
04	05.264.12	SETSCREW M10 X 25MM PLATED	9	
04	05.281.02	FLAT WASHER 10MM PLATED	5	
04	05.282.02	SPRING WASHER 10MM PLATED	9	
04	05.286.02	NUT M10 PLATED	9	
*04	06.227.01	GUARD-FRONT	1	
05	05.264.01	SETSCREW M8 X 20MM PLATED	5	
05	05.264.13	SETSCREW M10 X 30MM PLATED	4	
05	05.281.01	FLAT WASHER 8MM PLATED	5	
05	05.282.01	SPRING WASHER 8MM PLATED	5	
05	05.282.02	SPRING WASHER 10MM PLATED	4	
05	05.286.01	NUT M8 PLATED	5	
05	05.286.02	NUT M10 PLATED	4	
*05	06.201.01	GUARD-REAR	1	
06	05.264.12	SETSCREW M10 X 25MM PLATED	9	
06	05.281.02	FLAT WASHER 10MM PLATED	5	
06	05.282.02	SPRING WASHER 10MM PLATED	9	
06	05.286.02	NUT M10 PLATED	9	
*06	06.223.01	GUARD-FRONT HOOD	1	
*07	06.196.01	GUARD - REAR	1	
08	05.264.02	SETSCREW M8 X 25MM PLATED	5	
08	05.282.01	SPRING WASHER 8MM PLATED	5	
08	05.286.01	NUT M8 PLATED	5	
*08	06.194.01	BACKING STRIP-REAR GUARD	1	
71.023.01		SKID ASSEMBLY		
20	05.287.03	SELF-LOCKING NUT M12 PLATED	8	
*20	06.207.01	SKID-1100	1	
20	05.264.24	SETSCREW M12 X 35MM PLATED	8	
20	05.281.03	FLAT WASHER 12MM PLATED	8	
20	05.282.03	SPRING WASHER 12MM PLATED	8	

* MAIN PART IN GROUP, RELATED PARTS HAVE SAME REFERENCE NUMBER



REF	PART NO.	DESCRIPTION	QTY	SERIAL NO. FROM - TO
71.024.02, 72.120.01 72.121.01		ROLLER ASSEMBLY STANDARD PARTS		
30	05.264.24	SETSCREW M12 X 35MM PLATED	8	
30	05.281.03	FLAT WASHER 12MM PLATED	8	
30	05.282.02	SPRING WASHER 12MM PLATED	8	
30	05.287.03	SELF-LOCKING NUT M12 PLATED	8	
*31	05.959.05	CIRCLIP - INT 62MM DIA	4	
*32	03.007.02	BEARING - BALL 30MM BORE	2	
*33	04.164.04	SEAL-LIP 40DIA X 10MM	2	
*34	04.394.01	FLANGE-BEARING RETAINER	2	
34	05.953.01	GREASE NIPPLE M6	4	
35	05.234.01	WASHER 1.3/4" X 17/32" X 3/16"	2	
35	05.264.23	SETSCREW M12 X 30MM PLATED	2	
35	05.282.03	SPRING WASHER 12MM PLATED	2	
		ROLLER ASSEMBLY - 115 DIA.		
*30	06.204.01	BRACKETS-ROLLER	2	--> 3600 ZA
*35	06.752.01	ROLLER-115 DIA.		
		ROLLER ASSEMBLY - 150 DIA.		
*35	07.826.03	ROLLER 150 DIA.	1	
*36	07.822.01	BRACKET-ROLLER 150 DIA. LH	1	
*37	07.822.02	BRACKET-ROLLER 150 DIA. RH	1	3800 ZA -->
		ROLLER ASSEMBLY - 115 DIA.		
*35	06.752.01	ROLLER 115 DIA.	1	
*36	07.823.02	BRACKET-ROLLER 115 DIA. LH	1	
*37	07.823.02	BRACKET-ROLLER 115 DIA. RH	1	3800 ZA -->
*35	41851.01	CAP BEARING RETAINER	2)	From Serial No.
36	05.625.10	SKT CAPSCREW M12 X 30 DOMED	2)	2024G/96

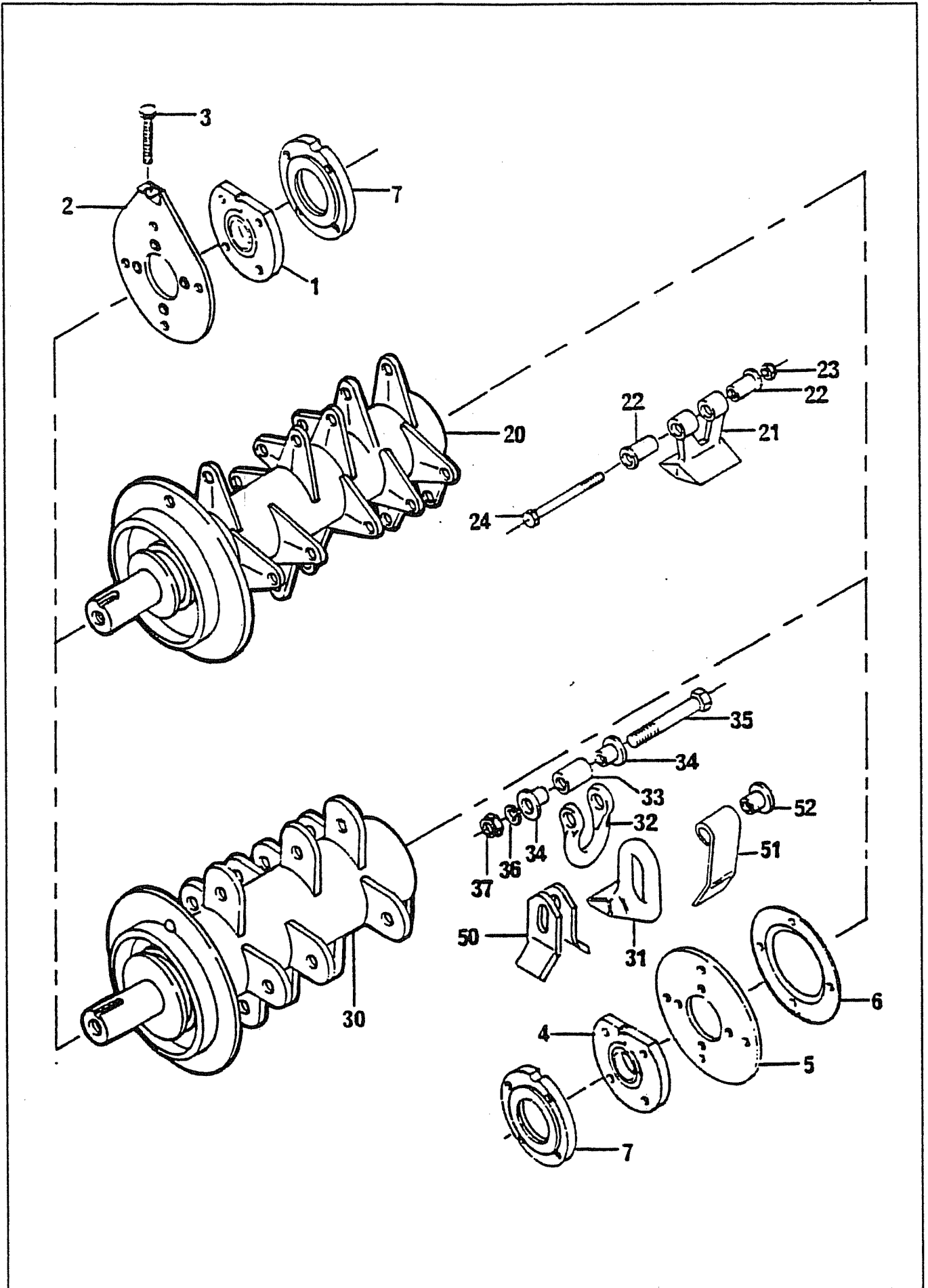
* MAIN PART IN GROUP, RELATED PARTS HAVE SAME REFERENCE NUMBER

REF	PART NO.	DESCRIPTION	QTY	SERIAL NO. FROM - TO
71.368.01, 71.772.01		COWL ASSEMBLY		
01	05.227.01	HAMMER DRIVE SCREW NO.6 X 1/2"	2	
01	05.774.01	SERIAL NUMBER PLATE	1	
*01	06.549.01	COWL-1500	1	--> 3890 ZA
*01	08.314.01	COWL-1500	1	3898 ZA -->
02	05.264.21	SETSCREW M12 X 20MM PLATED	1	
02	05.281.03	FLAT WASHER 12MM PLATED	1	
02	05.282.03	SPRING WASHER 12MM PLATED	2	2) 2)
02	05.286.03	NUT M12 PLATED	1	
*02	06.205.01	GUARD-BOTTOM DRIVE	1	
03	05.264.21	SETSCREW M12 X 20MM PLATED	2	
03	05.282.03	SPRING WASHER 12MM PLATED	2	
*03	06.222.01	GUARD-TOP DRIVE	1	
*09	06.545.01	GUARD - REAR	1	
10	05.264.03	SETSCREW M8 X 30MM PLATED	6	
10	05.282.01	SPRING WASHER 8MM PLATED	6	
10	05.286.01	NUT M8 PLATED	6	
*10	06.546.01	BACKING STRIP-REAR GUARD	1	
*11	07.164.01	GUARD-FRONT	1	
11	05.264.22	SETSCREW M12 X 25MM	2	
11	05.282.03	SPRING WASHER M12	2	
11	05.286.03	NUT M12	2	
71.367.02, 72.122.01, 72.123.01		ROLLER ASSEMBLY STANDARD PARTS		
30	05.264.24	SETSCREW M12 X 35MM PLATED	8	
30	05.281.03	FLAT WASHER 12MM PLATED	8	
30	05.282.02	SPRING WASHER 12MM PLATED	8	
30	05.287.03	SELF-LOCKING NUT M12 PLATED	8	
*31	05.959.05	CIRCLIP - INT 62MM DIA	4	
*32	03.007.02	BEARING - BALL 30MM BORE	2	41851.01 05.625.10
*33	04.164.04	SEAL-LIP 40DIA X 10MM	2	
*34	04.394.01	FLANGE-BEARING RETAINER	2	
34	05.953.01	GREASE NIPPLE M6	4	*35 36
36	05.234.01	WASHER 1.3/4" X 17/32" X 3/16"	2	
36	05.264.23	SETSCREW M12 X 30MM PLATED	2	
36	05.282.03	SPRING WASHER 12MM PLATED	2	
		ROLLER ASSEMBLY - 115 DIA.		
*30	06.204.01	BRACKET-ROLLER	2	--> 3890 ZA
*35	06.752.02	ROLLER-115 DIA.	1	
		ROLLER ASSEMBLY - 115 DIA.		
*35	06.752.02	ROLLER 115 DIA.	1	
*36	07.823.01	BRACKET-ROLLER 115 DIA. LH	1	3898 ZA -->
*37	07.823.02	BRACKET-ROLLER 115 DIA. RH	1	
		ROLLER ASSEMBLY - 150 DIA.		
*35	07.826.02	ROLLER 150 DIA.	1	
*36	07.822.01	BRACKET-ROLLER 150 DIA. LH	1	3898 ZA -->
*37	07.822.02	BRACKET-ROLLER 150 DIA. RH	1	

CAP BEARING RETAINER
SKT CAPSCREW M12 X 30 DOMED

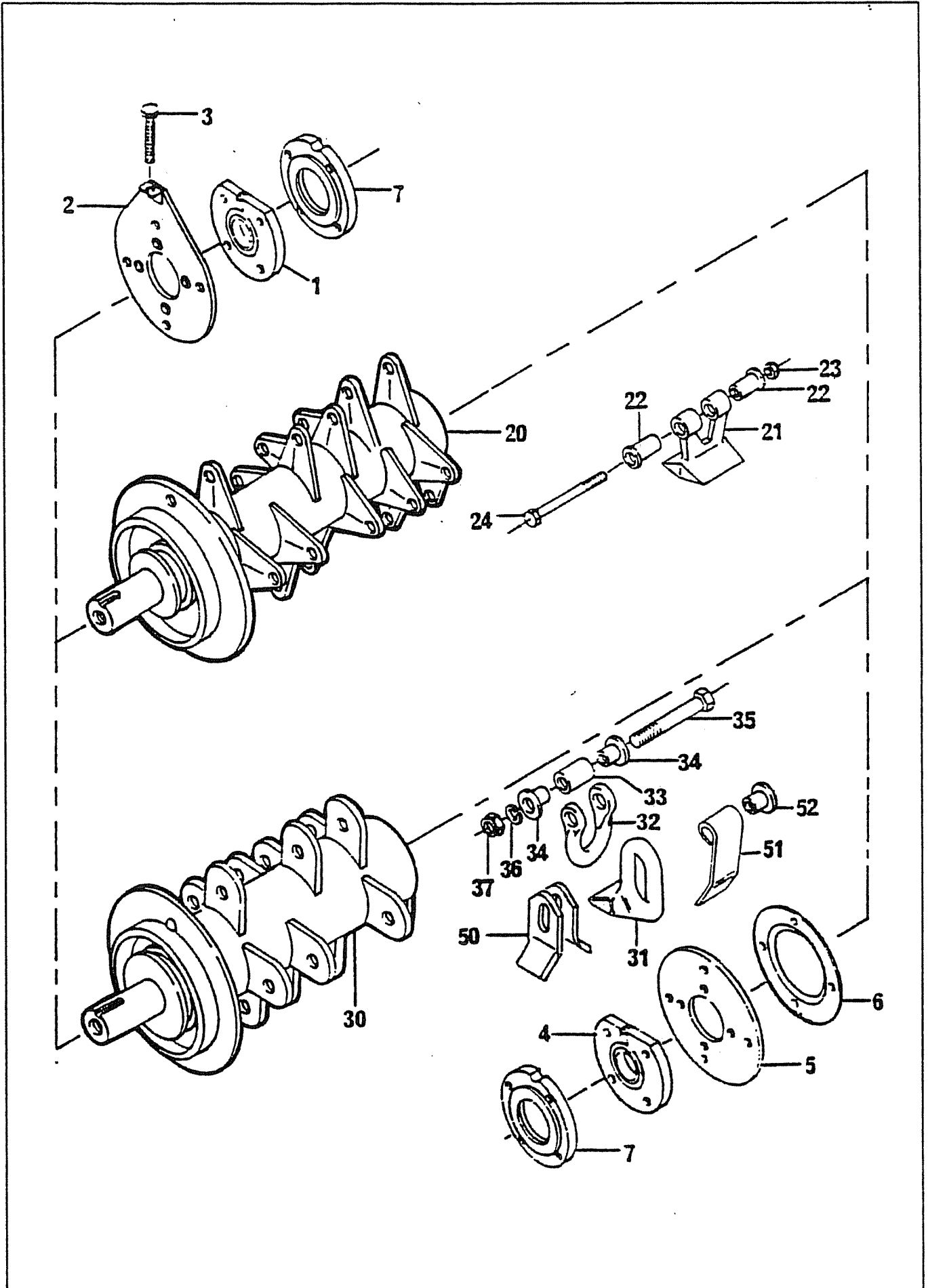
From Serial No.
2024G/96

* MAIN PART IN GROUP, RELATED PARTS HAVE SAME REFERENCE NUMBER



REF	PART NO.	DESCRIPTION	QTY	SERIAL NO. FROM - TO
71.025.02		BEARING ASSEMBLY		
01	05.345.05	SOCKET CSK SCREW M12X1.75X40	4	
*01	06.221.01	BEARING ASSEMBLY 40 - BORE	1	
01	02.824.01	WASHER 50 O/D X 13 I/D X 5MM	1	
01	05.264.23	SETSCREW M12 X 30MM PLATED	1	
01	05.283.03	SHAKEPROOF WASHER 12MM PLATED	1	
02	05.282.03	SPRING WASHER 12MM PLATED	4	
02	05.286.03	NUT M12 PLATED	4	
02	05.625.10	SKT CAP SCREW M12 X 30 DOME HEAD	4	
*02	06.193.01	PLATE-BEARING DRIVE END	1	
03	05.286.03	NUT M12 PLATED	2	
*03	06.220.01	BOLT-ADJUSTING	1	
04	05.264.24	SETSCREW M12 X 35MM PLATED	4	
04	05.282.03	SPRING WASHER 12MM PLATED	4	
*04	06.221.01	BEARING ASSEMBLY 40 - BORE	1	
04	02.824.01	WASHER 50 O/D X13 I/D X 5MM	1	
04	05.264.23	SETSCREW M12 X 30MM PLATED	1	
04	05.283.03	SHAKEPROOF WASHER 12MM PLATED	1	
05	05.282.03	SPRING WASHER 12MM PLATED	4	
05	05.286.03	NUT M12 PLATED	4	
05	05.625.10	SKT CAP SCREW M12 X 30 DOME HEAD	4	
*05	06.197.01	PLATE-BEARING NON DRIVE	1	
*06	06.195.01	GUARD-NON DRIVE	1	
*07	06.219.01	DISC-SHIELD	2	
	06.302.03	ROTOR SHAFT ASSEMBLY COMPLETE COMPRISING ITEMS 20 TO 24		
	06.511.01	ROTOR SHAFT ASSEMBLY COMPLETE, CLOCKWISE FLAIL ROTATION VIEWED FROM DRIVE END COMPRISING ITEMS 30 TO 38		
	06.512.01	ROTOR SHAFT ASSEMBLY COMPLETE, ANTI-CLOCKWISE FLAIL ROTATION VIEWED FROM DRIVE END COMPRISING ITEMS 30 TO 38		
71.026.04		ROTOR SHAFT ASSEMBLY - BUSHMASTER		
*20		SHAFT-BUSHMASTER	1	
*21	03.958.01	FLAIL - FORGED	20	
*22	03.437.01	COLLAR 30 O/D X 45	40	
*23	05.295.04	SELF LOCKING NUT 1/2" UNF PLATED	20	
*24	05.411.01	BOLT-1/2" UNF X 4.7/8"	20	

* MAIN PART IN GROUP, RELATED PARTS HAVE SAME REFERENCE NUMBER

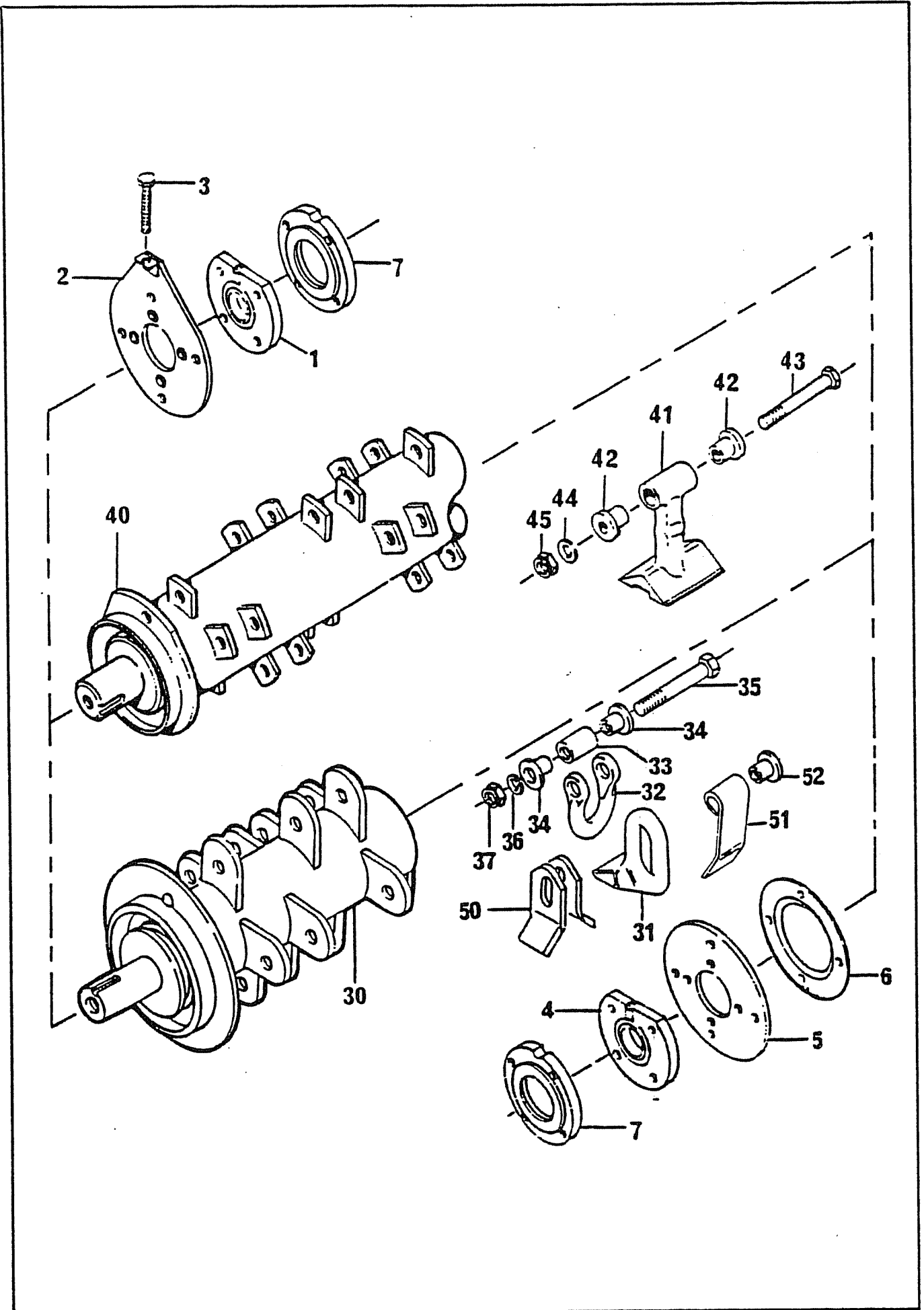


REF	PART NO.	DESCRIPTION	QTY
ROTOR SHAFT ASSEMBLY - TUBULAR			
*30		SHAFT-1100 TUBULAR	1
*31	02.959.01	FLAIL - FORGED	32
*32	05.895.01	SHACKLE-FORGED	32
*33	02.807.01	SPACER 1"O/D X 16MM I/D X 7MM	32
*34	02.801.01	COLLAR 26 O/D X 24	64
*35	05.775.02	BOLT M10 X 86MM (FINE)	32
*36	05.282.02	SPRING WASHER 10MM PLATED	32
*37	05.968.02	SELF LOCKING NUT M10 (FINE)	32
*38	06.510.01	LUG - BOLT ON	2
38	05.291.01	BOLT M8 X 30MM PLATED	4
38	05.286.01	NUT M8 PLATED	4
38	05.282.01	SPRING WASHER 8MM PLATED	4
*50	02.812.01	FLAIL-FORMED	64+
*51	06.189.01	FLAIL-FORMED 40 X 8	32+
*52	06.192.02	COLLAR 26 O/D X 21	64+

+ Spares only

* MAIN PART IN GROUP, RELATED PARTS HAVE SAME REFERENCE NUMBER

ROTOR SHAFT AND BEARING ASSEMBLIES 1508MW HEAD



REF	PART NO.	DESCRIPTION	QTY
-----	----------	-------------	-----

PART NUMBERS OF BEARING ASSEMBLY LISTED ON PAGE 4 - 2

71.369.02, 71.716.02 ROTOR SHAFT ASSEMBLY - TUBULAR

07.080.06		ROTOR SHAFT ASSEMBLY COMPLETE, COMPRISING ITEMS 30, 32 TO 37, 39, 50	
07.080.04		ROTOR SHAFT ASSEMBLY COMPLETE, COMPRISING ITEMS 30 - 39	
*30		SHAFT-1500 TUBULAR	1
*31	02.959.01	FLAIL-FORGED	44
*32	05.895.01	SHACKLE-FORGED	44
*33	02.807.01	SPACER 1"O/D X 16MM I/D X 7MM	44
*34	02.801.01	COLLAR 30 O/D X 24	88
*35	05.775.02	BOLT M10 X 86MM (FINE)	44
*36	05.282.02	SPRING WASHER 10MM PLATED	44
*37	05.968.02	SELF LOCKING NUT M10 (FINE)	44
*39	06.510.01	LUG - BOLT ON	2
39	05.291.01	BOLT M8 X 30MM PLATED	4
39	05.286.01	NUT M8 PLATED	4
39	05.282.01	SPRING WASHER 8MM PLATED	4
*50	02.812.01	FLAIL-FORMED	88
*51	06.189.01	FLAIL-FORMED	44+
*52	06.192.02	COLLAR 30 O/D X 21	88+

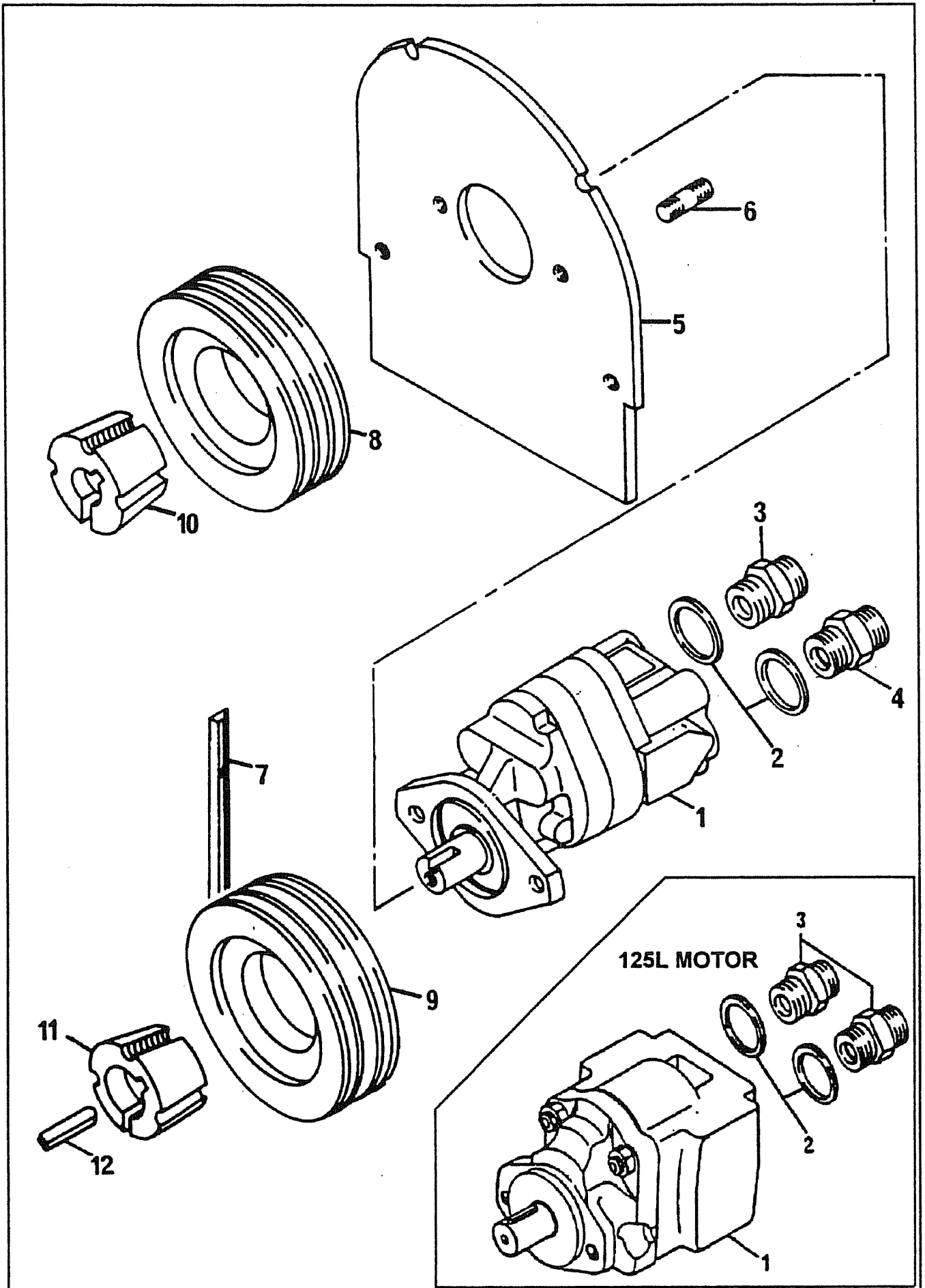
+ Spares only

41.208.01 ROTOR SHAFT ASSEMBLY - TUBULAR

*40		SHAFT-1500 TUBULAR	1
*41	09.905.01	FLAIL-FORGED 22MM DIA	30
*42	09.894.01	COLLAR-PIVOT 15MM DIA	60
*43	05.775.10	BOLT-SPECIAL M14 X 94MM	30
*44	05.282.08	SPRING WASHER 14MM PLATED	30
*45	05.968.06	S.LOCKING NUT M14 (FINE) PLATED	30

* MAIN PART IN GROUP, RELATED PARTS HAVE SAME REFERENCE NUMBER

MOTOR ASSEMBLY 1108MW HEAD



REF	PART NO.	DESCRIPTION	QTY	SERIAL NO. FROM - TO
71.124.01		MOTOR ASSEMBLY - 1108 MW HEAD		
*01	02.865.46	MOTOR ASSY	1	
01	05.960.18	KEY-REP 1/4"X1/4"X27MM	-	
01	02.865.58	SEAL KIT (02865 MOTORS)	-	
*02	05.290.07	BONDED SEAL 1"BSP	2	
*03	05.373.01	ADAPTOR 3/4"BSP X 1"BSP	1	
*04	05.434.01	ADAPTOR 1"BSP X 1"BSP	1	
05	05.625.12	SOCKET CAPSCREW M12 X 35MM COARSE	2	
05	05.281.03	FLAT WASHER 12MM PLATED	2	
05	05.282.03	SPRING WASHER 12MM PLATED	2	
05	05.286.03	NUT M12 PLATED	2	
05	05.388.05	SOCKET GRUBSCREW M12 X 1.75 X 12MM	2	
*05	06.200.01	PLATE-MOTOR MOUNTING	1	--> 3600 ZA
*05	07.832.01	PLATE-MOTOR MOUNTING	1	3800 ZA -->
*06	04.282.56	STUD M10 X 37MM	2	
06	05.282.02	SPRING WASHER 10MM PLATED	2	
06	05.286.02	NUT M10 PLATED	2	
*07	05.299.36	BELT-VEE SPA X 1060MM QUAD POWER	3	
*08	03.795.01	PULLEY-VEE 160MM PCD X 3SPA	1	
*09	03.795.03	PULLEY-VEE 140MM PCD X 3SPA	1	
*10	05.424.01	TAPER-LOCK BUSH 7/8"BORE	1	
*11	05.424.18	TAPER LOCK BUSH 40MM	1	
*12	05.960.16	KEY-S/REP 12MM X 8MM X 40MM	1	
*13	07.833.01	PLATE-COVER	1	

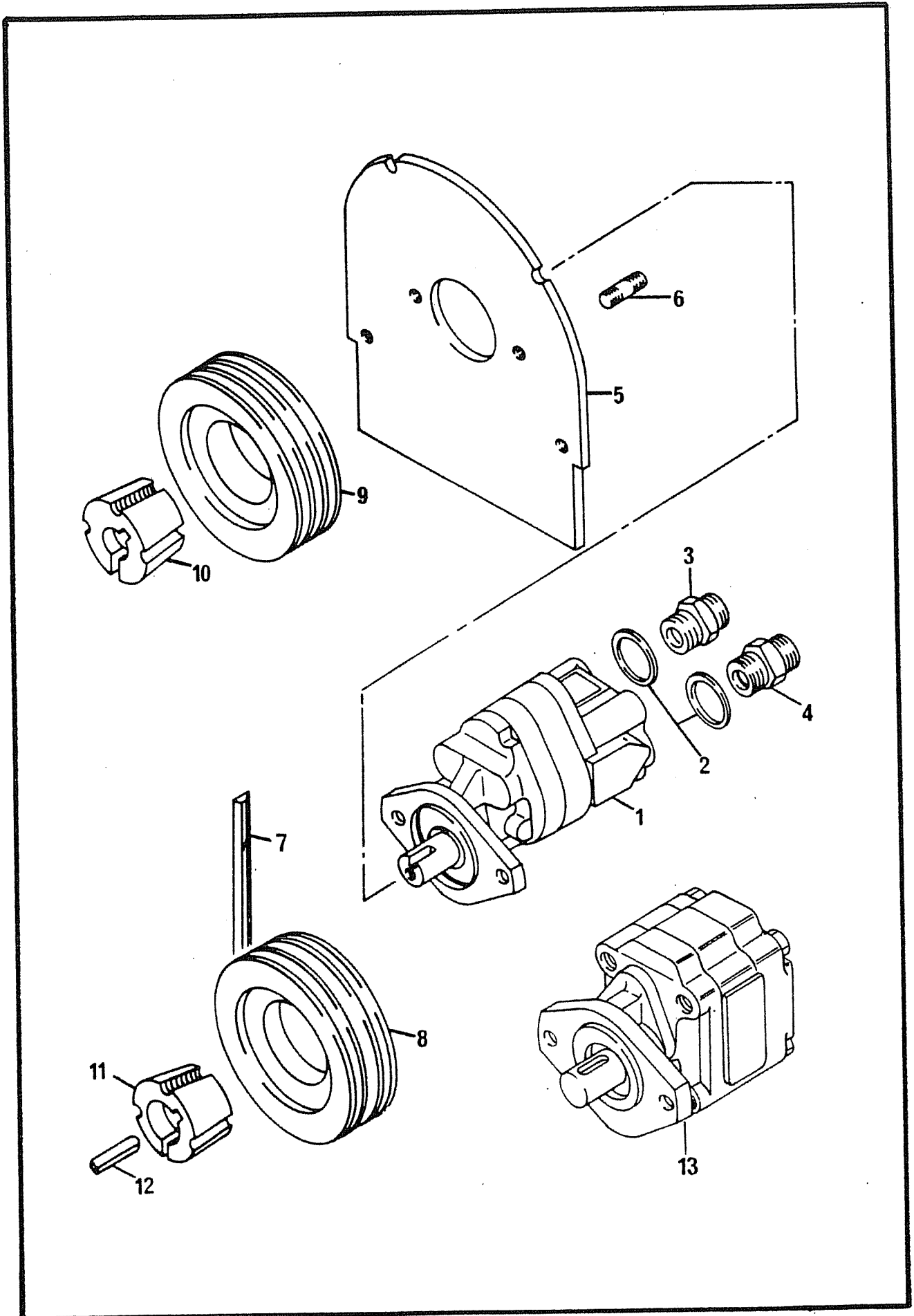
DEPENDING UPON COWL BUILD, PULLEYS (08 AND 09) CAN BE REVERSED

74.991.01 MOTOR ASSEMBLY

01	01.071.13	KEY-SEP 1/4" X 1/4" X 1"	-	
01	09.773.02	SEAL KIT 09.773 MOTOR	-	
*01	09.773.04	MOTOR-ULTRA 2TR044	1	
*02	05.290.06	BONDED SEAL 3/4" BSP	2	
*03	05.373.01	ADAPTOR 3/4" BSP X 1" BSP	2	
05	05.281.03	FLAT WASHER 12MM PLATED	2	
05	05.282.03	SPRING WASHER 12MM PLATED	2	
05	05.286.03	NUT M12 PLATED	2	
05	05.625.12	CAPSCRW M12 X 35 CRSE DOMED PLT	2	
*05	07.832.01	PLATE - MOTOR MOUNTING	1	
06	05.282.02	SPRING WASHER 10MM PLATED	2	
06	05.286.02	NUT M10 PLATED	2	
*06	04.282.56	STUD M10 X 37MM	2	
*07	05.299.36	V - BELT XPA 1060 QUAD POWER	3	
*08	03.795.01	PULLEY - VEE 160MM PCD X 3 SPA	1	
*09	03.795.03	PULLEY - VEE 140MM PCD X 3 SPA	1	
*10	05.424.18	TAPER LOCK 1" BORE (2517)	1	
*11	05.424.07	TAPER - LOCK 40MM (2517)	1	
*12	05.960.16	KEY - S/REP 12MM X 8MM X 40MM	1	
*13	07.833.01	PLATE - COVER	1	

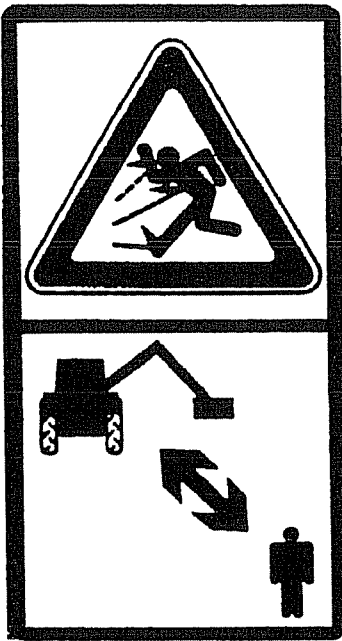
125 L MOTOR ASSY - FROM SERIAL NO 2033GA/96

*MAIN PART IN GROUP, RELATED PARTS HAVE SAME REFERENCE NUMBER



REF	PART NO.	DESCRIPTION	QTY	SERIAL NO. FROM - TO
71.124.01		HAMWORTHY MOTOR		
*01	02.865.46	MOTOR ASSY	1	
01	05.960.18	KEY-REP 1/4" X 1/4" X 27MM	-	
01	02.865.58	SEAL KIT (02865 MOTORS)	-	
*02	05.290.07	BONDED SEAL 1"BSP	2	
*03	05.373.01	ADAPTOR 3/4"BSP X 1"BSP	1	
*04	05.434.01	ADAPTOR 1"BSP X 1"BSP	1	
05	05.625.12	SOCKET CAPSCREW M12 X 35MM COARSE	2	
05	05.281.03	FLAT WASHER 12MM PLATED	2	
05	05.282.03	SPRING WASHER 12MM PLATED	2	
05	05.286.03	NUT M12 PLATED	2	
*05	06.200.01	PLATE-MOTOR MOUNTING	1	--> 3890 ZA
*05	06.200.01	PLATE-MOTOR MOUNTING	1	3898 ZA -->
05	05.625.12	CAPSCREW M12 X 35	2	
*06	04.282.56	STUD M10 X 36MM	2	
06	05.282.02	SPRING WASHER 10MM PLATED	2	
06	05.286.02	NUT M10 PLATED	2	
*07	05.299.36	BELT-VEE SPA X 1060MM QUAD POWER	3	
*08	03.795.01	PULLEY-VEE 160MM PCD X 3SPA	1	
*09	03.795.03	PULLEY-VEE 140MM PCD X 3SPA	1	
*10	05.424.01	TAPER-LOCK BUSH 7/8"BORE	1	
*11	05.424.18	TAPER LOCK BUSH 40MM	1	
*12	05.960.16	KEY-S/REP 12MM X 8MM X 40MM	1	
*13	07.823.01	PLATE-COVER	1	3898 ZA -->
71.773.01		COMMERCIAL MOTOR		
	06.864.04	MTR ASSY (COM) 84L PROD ASSY	1	
*02	05.290.07	BONDED SEAL 1"BSP	2	
*03	05.373.01	ADAPTOR 3/4"BSP X 1"BSP	1	
*04	05.434.01	ADAPTOR 1"BSP X 1"BSP	1	
05	05.281.03	FLAT WASHER 12MM PLATED	2	
05	05.282.03	SPRING WASHER 12MM PLATED	2	
05	05.286.03	NUT M12 PLATED	2	
05	05.625.12	CAPSCREW M12 X 35 COARSE DOMED	2	
*05	06.200.01	PLATE-MOTOR MOUNTING	1	
*06	04.282.42	STUD M10 X 40MM	2	
06	05.282.02	SPRING WASHER 10MM PLATED	2	
06	05.286.02	NUT M10 PLATED	2	
*07	05.299.24	BELT-VEE SPA X 1060MM	3	
*08	03.795.01	PULLEY-VEE 160MM PCD X 3SPA	1	
*09	03.795.03	PULLEY-VEE 140MM PCD X 3SPA	1	
*10	05.424.07	TAPER-LOCK BUSH 1"BORE	1	
*11	05.424.18	TAPER LOCK BUSH 40MM	1	
12	05.960.16	KEY-S/REP 12MM X 8MM X 40MM	1	
*13	05.960.17	KEY-REP 1/4" X 3/8" X 1.1/4"	1	
13	06.032.03	MOTOR ASSY (84L)	1	
13	06.032.04	SEAL KIT FOR 06.032.03 MOTOR	-	

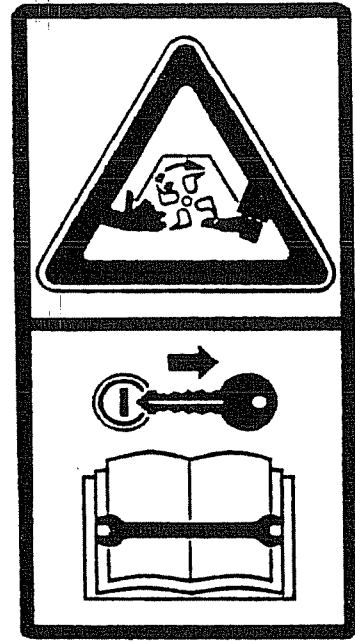
*MAIN PART IN GROUP, RELATED PARTS HAVE SAME REFERENCE NUMBER



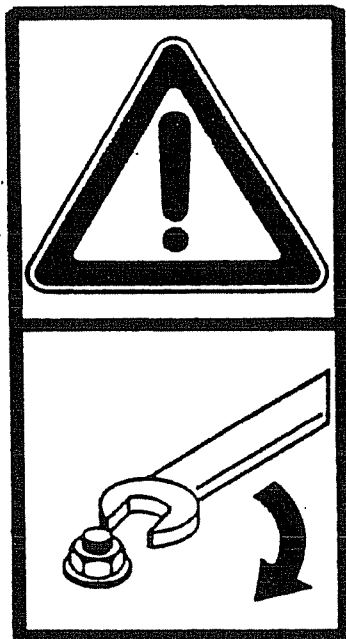
09.821.04



09.821.05



09.821.08



09.821.10

IMPORTANT: SAFETY INSTRUCTIONS - GUARDING.
 THIS MACHINE IS FITTED WITH A MOTOR REVERSING VALVE.
 HEAD MUST BE GUARDED AS SHOWN.

IMPORTANT: INSTRUCTIONS DE SECURITE - PROTECTION.
 CETTE MACHINE EST MUNIE D'UNE SOUPEPE D'INVERSION DE
 ROTATION DU MOTEUR.
 LES PROTECTIONS DOIVENT ETRE MONTEES COMME CI-DESSOUS.

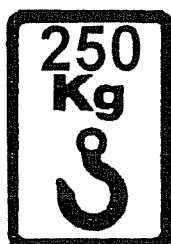
HEDGETRIMMING (TAILLAGE DE HAIE)	← REVERSE ROTATION (ROTATION INVERSE) →	GROUND LEVEL CUTTING (FAUCHAGE)
DIRECTION OF TRAVEL. (SENS DE MARCHÉ)		DIRECTION OF TRAVEL. (SENS DE MARCHÉ)
FORWARD ROTATION (ROTATION AVANT)	← FORWARD ROTATION (ROTATION AVANT) →	

IF MOTOR DIRECTION IS CHANGED DURING WORK, BOTH
 ROTATION GUARD SETS MUST BE FITTED.

SI LE SENS DE ROTATION SERA CHANGE PENDANT
 LE TRAVAIL, LES PROTECTEURS DOIVENT ETRE
 MONTES POUR LES DEUX SENS.

DUAL ROTATION (LES DEUX SENS DE ROTATION)	← DUAL ROTATION (LES DEUX SENS DE ROTATION) →	
--	--	--

08.886.01



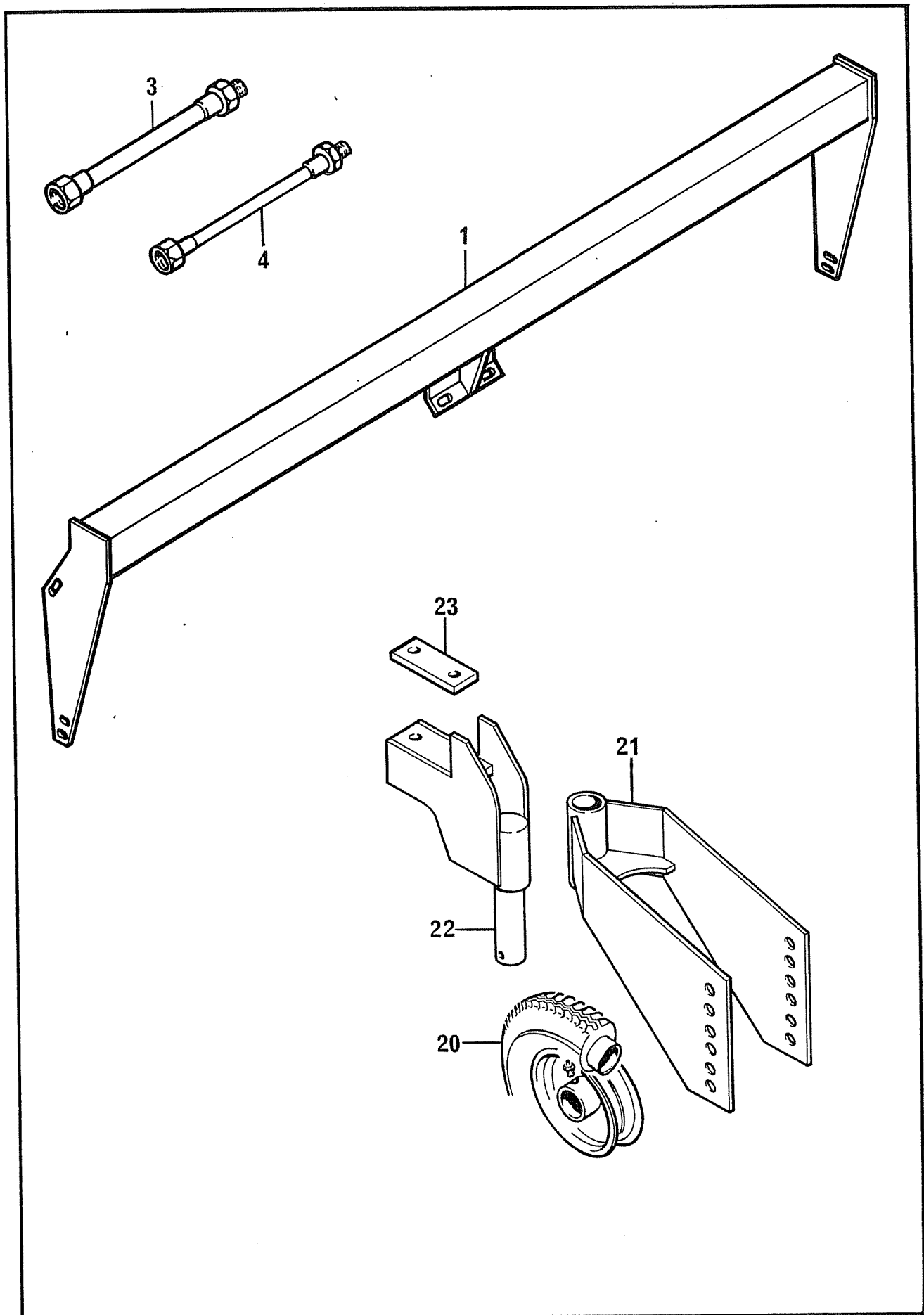
09.843.01



09.810.02

REF	PART NO.	DESCRIPTION	QTY	SERIAL NO. FROM - TO
	71.017.03	DECALS		
*01	08.886.01	DECAL - HEAD GUARDING	1	
*02	09.810.02	DECAL - GREASE (40 HOURS)	4	
*03	09.821.04	DECAL - DANGER THROWN DEBRIS	1	
*04	09.821.05	DECAL - CUTTING HEAD DANGER	1	
*06	09.821.08	DECAL - SAFEWORKING ON HEAD	1	
*07	09.843.01	DECAL - LIFT POINT 250 KG	2	

* MAIN PART IN GROUP, RELATED PARTS HAVE SAME REFERENCE NUMBER



REF	PART NO.	DESCRIPTION	QTY	SERIAL NO. FROM - TO
71.840.01		1508MW SLIDE MOUNT BRACKET KIT		
01	05.264.23	SETSCREW M12 X 30MM	2	
01	05.264.25	SETSCREW M12 X 40MM	4	
01	05.281.03	FLAT WASHER 12MM PLATED	6	
01	05.287.03	SELF-LOCKING NUT	6	
*01	07.354.01	BRACKET-SLIDE MOUNT	1	
01	05.264.25	SETSCREW M12 X 40MM	4	
01	05.281.03	FLAT WASHER 12MM PLATED	4	
01	05.281.03	SPRING WASHER 12MM PLATED	4	
01	05.286.03	NUT M12 PLATED	4	
*03	04.160.01	PIPE-STEEL 1" BSP	1	
*04	04.160.03	PIPE STEEL 3/4" BSP	1	

THE SLIDE MOUNT ADAPTOR KIT IS NOT SUITABLE FOR FITMENT
TO 1508MW HEADS WHEN USED IN CONJUNCTION WITH EITHER
THE B468 OR B77-77 MACHINES

71.936.01		CASTOR WHEEL KIT		
*20	01.618.01	WHEEL/TYRE ASSEMBLY 4.00 X 8 4 PLY	1	
21	05.253.36	BOLT 5/8" UNF X 6" PLATED	1	
21	05.282.04	SPRING WASHER 16MM PLATED	1	
21	05.288.05	NUT 5/8" UNF PLATED	1	
*21	06.187.01	BRACKET - WHEEL CROTCH	1	
22	00.372.01	LINCH PIN	1	
22	05.281.07	FLAT WASHER 30MM	1	
*22	07.538.01	BRACKET - CLAMP	1	
23	05.282.04	SPRING WASHER 16MM PLATED	2	
23	05.286.04	NUT M16 PLATED	2	
23	05.292.34	BOLT M16 X 110MM PLATED	2	
*23	06.186.01	CLAMP	1	

* MAIN PART IN GROUP, RELATED PARTS HAVE SAME REFERENCE NUMBER