

PM 1929

FALCON 5
FRONT MOUNT

ARM MOWER

W.G.C. 90.214.31

PARTS MANUAL

ISSUE 1

IMPORTANT

NOTE HERE THE SERIAL NUMBER OF YOUR MACHINE AND ALWAYS QUOTE IT IN ANY COMMUNICATION WITH US OR YOUR DEALER. THIS IS PARTICULARLY IMPORTANT WHEN ORDERING SPARES. REMEMBER TO INCLUDE ALL NUMBERS AND LETTERS.

MACHINE SERIAL NUMBERS _____

THE MANUAL CAN CONTAIN STANDARD AND OPTIONAL FEATURES AND IS NOT TO BE USED AS A MACHINE SPECIFICATION.

THE MACHINE HAS BEEN TESTED AND IS CONSIDERED SAFE IF CAREFULLY USED. ENSURE YOUR OPERATOR IS PROPERLY TRAINED IN ITS USE AND MAINTENANCE.

IMPORTANT

NUMEROS DE SERIE DE LA MACHINE _____

LES INFORMATIONS DONNEES DANS CE MANUEL SONT CORRECTES CEPENDANT, DU FAIT DE DEVELOPPEMENT CONSTANT DES MACHINES BOMFORD TURNER.

CHANGEMENTS DANS LES CARACTERISTIQUES SONT INEVITABLES.

SI VOUS TROUVEZ QUE LES INFORMATIONS DONNEES NE CORRESPONDENT PAS A VOTRE MACHINE VEUILLEZ CONTACTER LE SERVICE DES REPARATIONS OU DES INFORMATIONS PLUS RECENTES VOUS SERONT DONNEES.

CE MANUEL PEUT MONTRER DES CARACTERISTIQUES OPTIONNELLES ET NE PEUT PAS ETRE CONSIDERE COMME SPECIFICATION DE LA MACHINE.

CETTE MACHINE A ETE TESTEE, ET ELLE EST CONSIDEREE COMME FIABLE A CONDITION D'UNE BONNE UTILISATION. ASSUREZ-VOUS QUE VOTRE OPERATEUR EST QUALIFIE EN CE QUI CONCERNE L'UTILISATION DE LA MACHINE AINSI QUE SON ENTRETIEN.

WICHTIG

TRAGEN SIE HIER DIE SERIENNUMMERN IHRER MASCHINE EIN UND GEBEN SIE DIESE IMMER AN, WENN SIE SICH AN UNS ODER IHREN HÄNDLER WENDEN. DAS IST BESONDERS BEI ERSATZTEILBESTELLUNGEN WICHTIG. VERGESSEN SIE NICHT, ALLE ZAHLEN UND BUCHSTABEN ZU NOTIEREN.

SERIENNUMMERN DER MASCHINE _____

DIE ANGABEN IN DIESEM HANDBUCH SIND BEI VERÖFFENTLICHUNG KORREKT. AUFGRUND DER KONSTANTEN WEITERENTWICKLUNG VON BOMFORD TURNER MASCHINEN SIND JEDOCH ÄNDERUNGEN IN DER SPEZIFIKATION UNVERMEIDLICH. WENN DIE INFORMATION IN DIESEM HANDBUCH NICHT MIT IHRER MASCHINE ÜBEREINSTIMMEN, NEHMEN SIE BITTE KONTAKT MIT DER BOMFORD TURNER KUNDENDIENSTABTEILUNG AUF, DIE IHNEN GERNE DIE AKTUELLEN INFORMATION ZUKOMMEN LÄSST.

DAS HANDBUCH KANN SOWOHL BESCHREIBUNGEN FÜR DIE STANDARD AUSFÜHRUNG ALS AUCH FÜR ZUBEHÖR ENTHALTEN UND IST NICHT ALS MASCHINENSPEZIFIKATION ZU VERWENDET.

DIE MASCHINE IST GETESTET UND BEI SACHGEMÄSSEM BETRIEB ALS SICHER BEFUNDEN WORDEN. SORGEN SIE DAFÜR, DASS IHR BEDIENPERSONAL IN ANWENDUNG UND WARTUNG RICHTIG GESCHULT WIRD.

FALCON 5 FRONT MOUNT ARM MOWER

PAGE ILLUSTRATION NUMBERS SHOWN ARE USED ONLY FOR REFERENCE PURPOSES AND SHOULD NOT BE USED FOR ORDERING SPARE PARTS. PLEASE ENSURE THE CORRECT PART NUMBER AND DESCRIPTION IS GIVEN WHEN ORDERING SPARE PARTS.

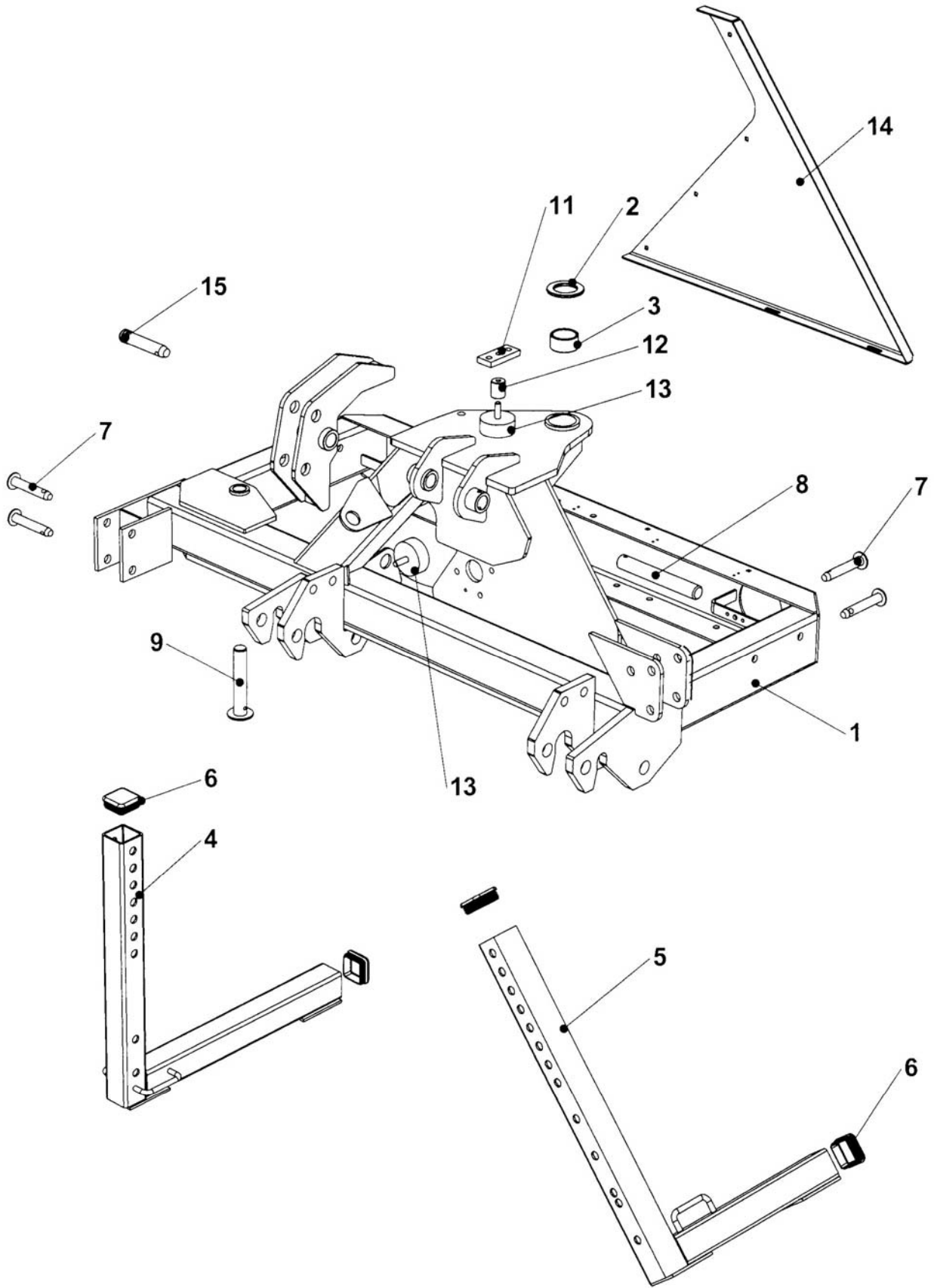
PAGE NO	DESCRIPTION
2 - 1 TO 2 - 2	MAINFRAME ASSEMBLY
3 - 1 TO 3 - 2	OIL TANK ASSEMBLY
4 - 1 TO 4 - 2	KINGPOST ASSEMBLY
5 - 1 TO 5 - 4	ARM ASSEMBLIES
6 - 1 TO 6 - 2	COWL BRACKET AND LINKAGE
7 - 1 TO 7 - 2	GEARBOX & PUMP CIRCUITS
8 - 1 TO 8 - 2	VALVE
9 - 1 TO 9 - 2	REMOTE CONTROL ASSEMBLY
10 - 1 TO 10 - 2	REMOTE CONTROL CAB MOUNTING
11 - 1 TO 11 - 2	RAM CIRCUITS
12 - 1 TO 12 - 2	SLEW RAM AND ACCUMULATOR
13 - 1 TO 13 - 2	BREAKOUT RAM
14 - 1 TO 14 - 2	OIL COOLER ASSEMBLY
15 - 1 TO 15 - 2	HOSE CIRCUIT
16 - 1 TO 16 - 2	DECALS
17 - 1 TO 17 - 2	ROAD LIGHTING ASSEMBLY
18 - 1 TO 18 - 2	ARM FLOAT HIT

IMPORTANT

THIS MACHINE IS FOR VEGETATION CONTROL AND MUST NOT BE USED FOR ANY OTHER PURPOSE

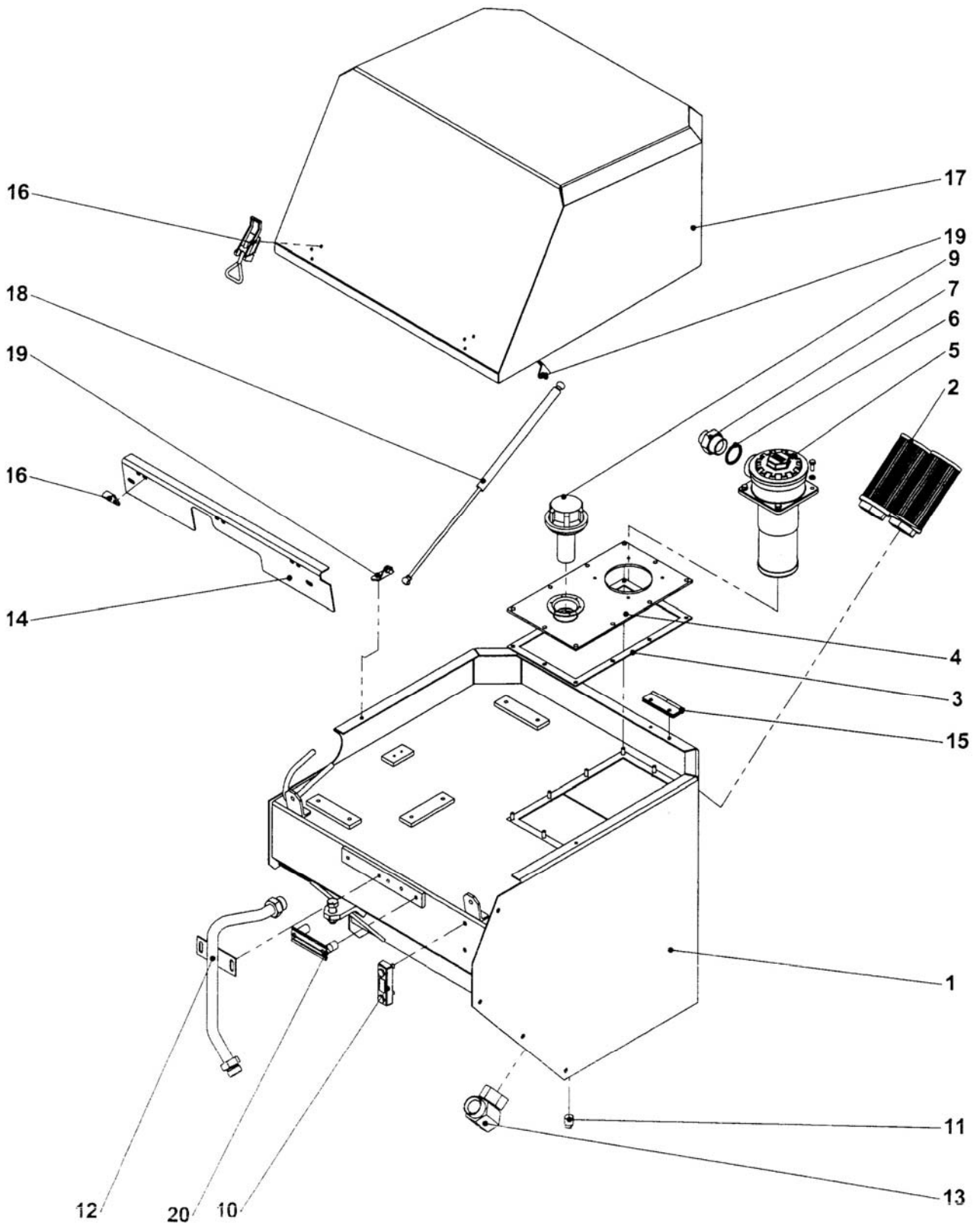
IT IS POTENTIALLY HAZARDOUS TO FIT OR USE ANY PARTS OTHER THAN GENUINE BOMFORD TURNER PARTS

THE COMPANY DISCLAIMS ALL LIABILITY FOR THE CONSEQUENCES OF SUCH USE WHICH, IN ADDITION, VOIDS THE MACHINE WARRANTY



REF	PART NO.	DESCRIPTION	QTY
77.110.01 MAINFRAME ASSY LH 8852			
01	30.058.66	CABLE RET CLIP 77/104	3
01	05.227.01	HAMMER DRIVE SCREW NO.6X3/8"	2
01	05.774.07	SERIAL NO. PLATE BOMFORDTURNER	1
01	05.953.03	GREASE NIPPLE M10	2
01*	45935.01	MAINFRAME LH 8852	1
02	09.918.01	THRUST WASHER - PLASTIC	2
03	08.297.13	BUSH PLASTIC 60 X 50 - 30 LONG	4
04	45936.01	STAND ASSY	1
05	45936.02	STAND ASSY	1
06	45210.01	PLUG PLASTIC 70 X 70 BLACK	4
07	00.372.01	LINCH PIN	4
07*	42930.04	PIN 19 DIA X 102	4
08*	03.654.79	PIN - DIA 30 X 214	1
08	05.287.01	SELF-LOCKING NUT M8 PLATED	1
08	05.291.06	BOLT M8 X 55MM PLATED	1
09*	03.654.94	PIN 30 DIA X 168	1
09	05.287.01	SELF-LOCKING NUT M8 PLATED	1
09	05.291.06	BOLT M8 X 55MM PLATED	1
10	05.264.22	SETSCREW M12 X 25MM PLATED	2
10	05.282.03	SPRING WASHER 12MM PLATED	2
10	05.953.01	GREASE NIPPLE M6	1
10*	45940.01	BRACKET - SPRING	1
11	46013.01	CLAMP	1
12	46011.01	BOSS	1
13	45987.01	RUBBER BUFFER 7530/OEO/5	2
14	05.282.01	SPRING WASHER 8MM PLATED	6
14	05.286.01	NUT M8 PLATED	6
14*	46049.01	GUARD - REAR LH	1
14	9293054	BOLT CUP SQUARE M8X25	6
15	00.372.01	LINCH PIN	1

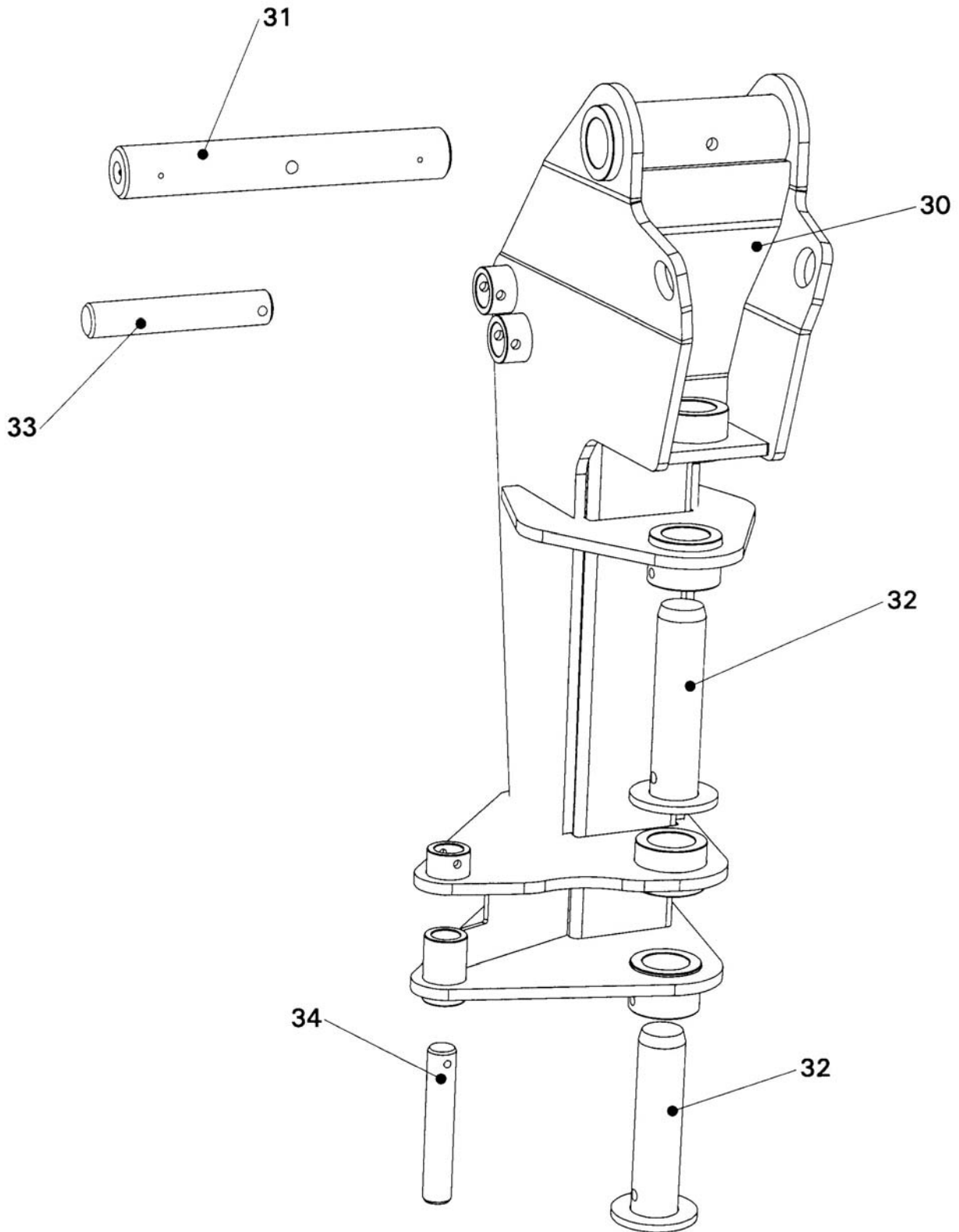
* MAIN PART IN GROUP, RELATED PARTS HAVE SAME REFERENCE NUMBER



(1907-0204)

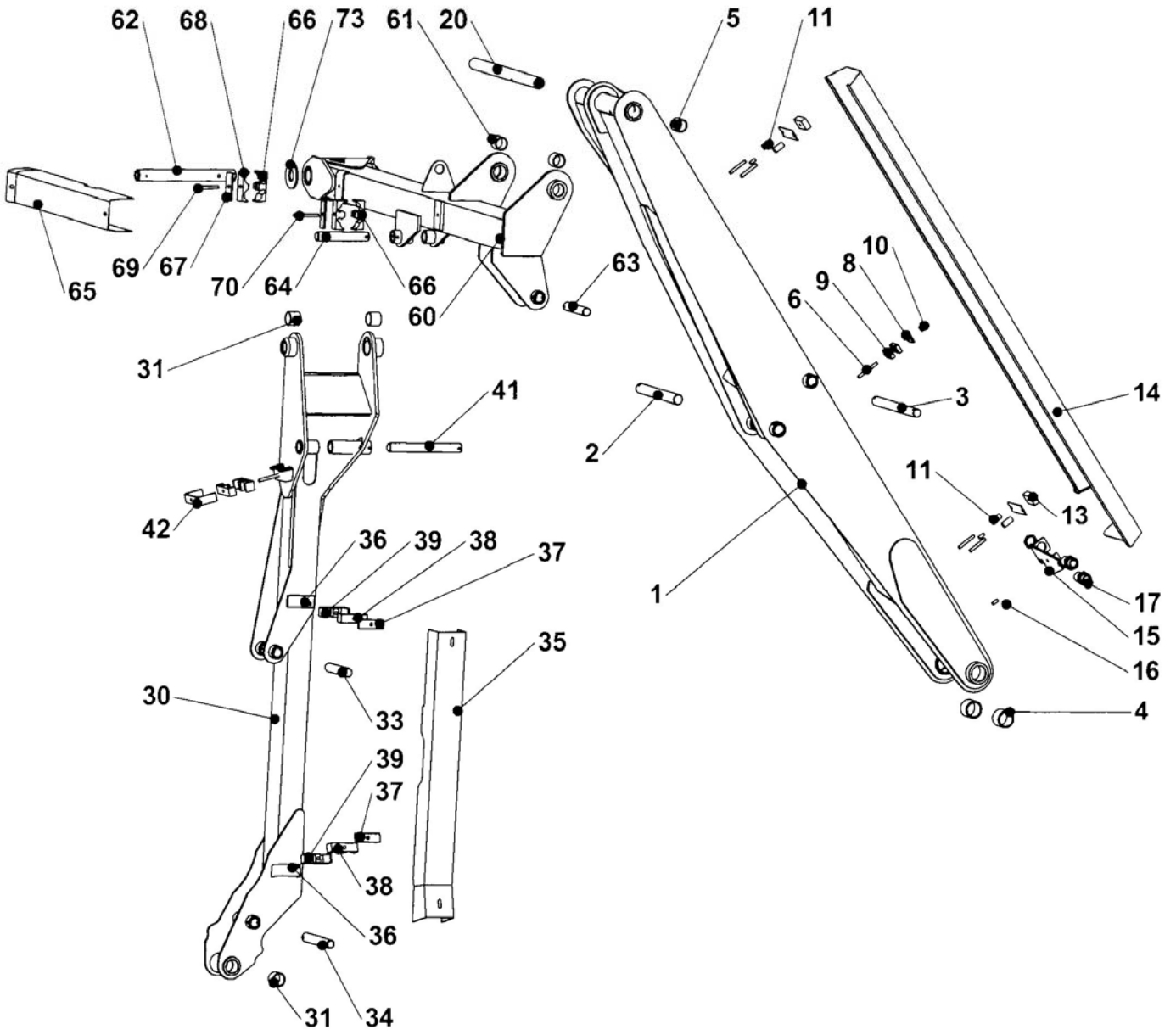
REF	PART NO.	DESCRIPTION	QTY
77.109.13 OIL TANK ASSY LH			
01	03.100.01	STUD M10 X 34MM	6
01	05.264.01	SETSCREW M8 X 20MM PLATED	4
01	05.281.01	FLAT WASHER 8MM PLATED	10
01	05.282.01	SPRING WASHER 8MM PLATED	4
01	05.282.02	SPRING WASHER 10MM PLATED	6
01	05.286.01	NUT M8 PLATED	10
01	05.286.02	NUT M10 PLATED	6
01	05.287.04	SELF-LOCKING NUT M16 PLATED	3
01	05.291.34	SETSCREW M16 X 45MM PLATED	2
01	05.292.31	BOLT M16 X 80MM PLATED	1
*01	46706.01	TANK - OIL LH	1
02	8401047	SE75351310M SUCTION ELEMENT	2
03	08.605.01	GASKET	1
04	41.255.01	PLATE - FILLER/FILTER	1
05	41.041.01	FILTER ASSEMBLY 125L	1
05	41.041.02	ELEMENT 125L	0
06	05.290.08	BONDED SEAL 1.1/4"BSP	1
07	05.131.01	ADAPTOR 1" X 1.1/4" BSP	1
09	06.966.02	FILLER BREATHER CAP & STRAINER	1
10	08.921.01	FLUID LEVEL GAUGE	1
11	05.495.01	PLUG 1/2"BSPT	1
12	04.282.88	STUD M10 X 23	2
12	05.282.02	SPRING WASHER 10MM PLATED	2
12	05.286.02	NUT M10 PLATED	2
*12	46107.05	PIPE - HYDRAULIC 1"BSP LH	1
13	05.835.10	ADAPTOR 90 SWIVEL 1.1/2"BSP MF	1
14	05.264.12	SETSCREW M10 X 25MM PLATED	2
14	05.281.02	FLT WASHER 10MM PLATED FORM C	2
14	05.282.02	SPRING WASHER 10MM PLATED	2
14	05.286.02	NUT M10 PLATED	2
*14	46771.01	COVER - TANK FRONT LH	1
15	05.345.14	M6 CSK SKT SCREW 16MM	12
15	30.070.64	NUT NYLOC M6.Z/P.	12
*15	46065.01	HINGE	2
16	43449.03	PLATE TOGGLE CLAMP - TANK	2
*16	43449.04	FASTENER - OVERCENTRE	2
17	08.156.02	SELF ADH.POLY STRIP 16X6X2500	1
*17	46708.04	COVER - TANK TOP	1
18	46748.01	GAS SPRING 600EX LG X 250 STK	1
19	46765.01	GAS SPRING MTG PLATE	2
20	04.282.80	STUD M10 X 50	2
20	05.281.02	FLT WASHER 10MM PLATED FORM C	2
20	05.282.02	SPRING WASHER 10MM PLATED	2
20	05.286.02	NUT M10 PLATED	2
*20	46070.02	CLAMP - HOSE	1

* MAIN PART IN GROUP, RELATED PARTS HAVE SAME REFERENCE NUMBER



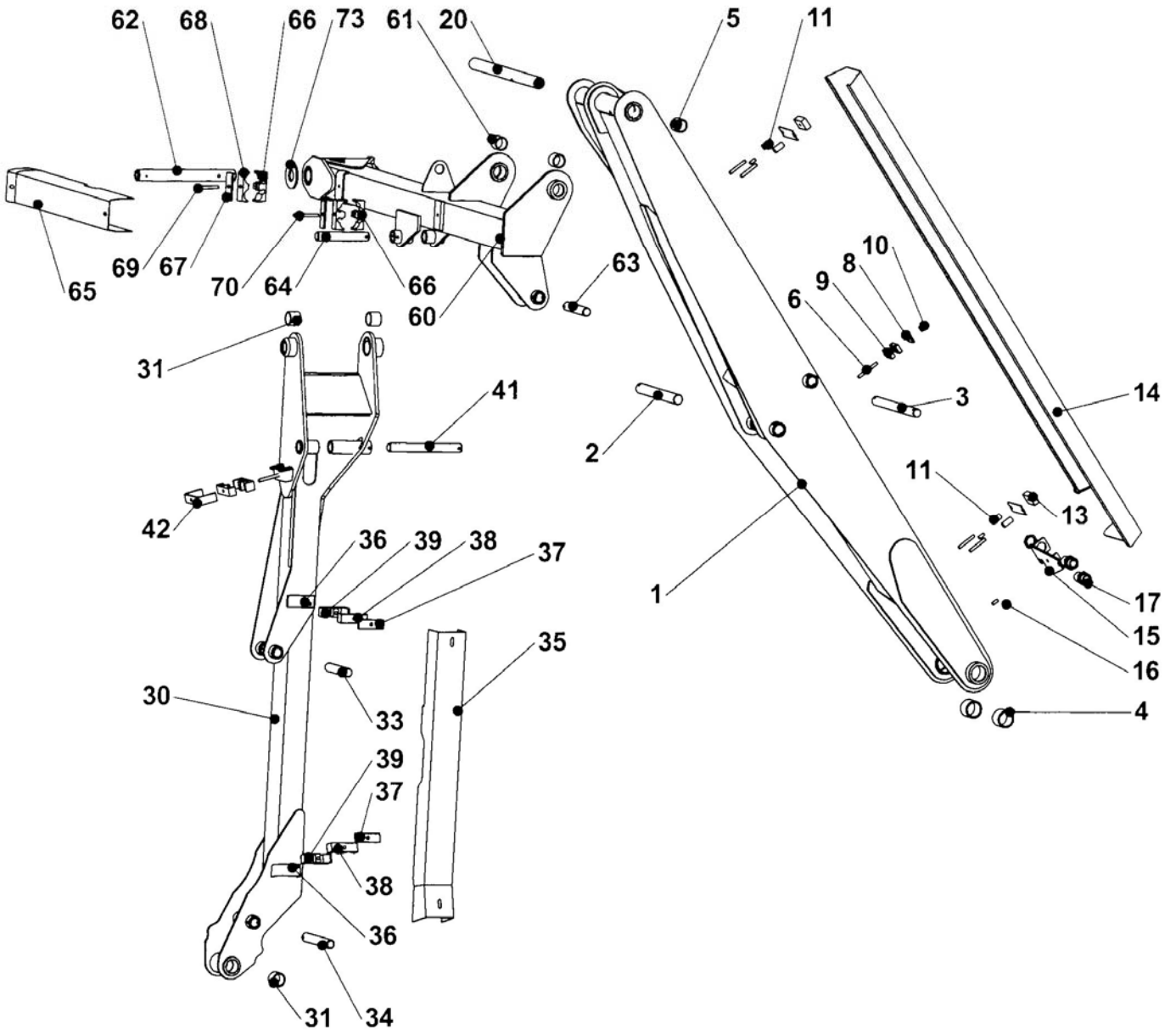
REF	PART NO.	DESCRIPTION	QTY
77.105.01 KINGPOST ASSY LH NON-PAR 8852			
30	45924.01	KINGPOST LH	1
31*	03.657.24	PIN - DIA 50 X 341	1
31	05.287.03	SELF-LOCKING NUT M12 PLATED	1
31	05.292.22	BOLT M12 X 90MM PLATED	1
31	05.953.01	GREASE NIPPLE M6	2
32	05.287.03	SELF-LOCKING NUT M12 PLATED	2
32	05.292.22	BOLT M12 X 90MM PLATED	2
32*	45965.01	PIN - KINGPOST 50 DIA	2
33*	03.655.59	PIN 35 DIA X 204	1
33	05.287.02	SELF-LOCKING NUT M10 PLATED	1
33	05.291.18	BOLT M10 X 65 PLATED	1
34*	03.654.89	PIN 30 DIA X 170	1
34	05.287.01	SELF-LOCKING NUT M8 PLATED	1
34	05.291.06	BOLT M8 X 55MM PLATED	1

* MAIN PART IN GROUP, RELATED PARTS HAVE SAME REFERENCE NUMBER



REF	PART NO.	DESCRIPTION	QTY
77.115.09 ARM ASSY FIRST LH 5.5			
01	46161.01	ARM - FIRST FWD 5.5 FALCON	1
02	03.655.62	PIN 35 DIA X 324	1
02	05.287.02	SELF-LOCKING NUT M10 PLATED	2
02	05.291.18	BOLT M10 X 65 PLATED	1
03	03.654.92	PIN 30 DIA X 355	1
03	05.287.01	SELF-LOCKING NUT M8 PLATED	1
03	05.291.06	BOLT M8 X 55MM PLATED	1
04	08.297.01	BUSH - PLASTIC 60 X 50 X 50	2
05	08.297.02	BUSH - PLASTIC 47 X 40 X 40	2
06	04.282.84	STUD M10 X 1.5 - 95 LONG	1
08	06.418.06	CLAMP PLATE 48 X 6	1
09	06.430.07	CLAMP HOSE	2
09	06.430.02	CLAMP HOSE	2
11	45529.01	SPACER	4
12	04.282.76	STUD - M10 X 70 PLATED	4
12	05.282.02	SPRING WASHER 10MM PLATED	6
13	04.282.88	STUD M10 X 23	2
13	05.281.02	FLT WASHER 10MM PLATED	3
13	46070.01	CLAMP - HOSE	2
13	9100025	NUT DOMED M10 PLATED	3
14	46101.01	GUARD - HOSE 1ST ARM LH	1
15	46099.01	BRACKET - HOSE MOUNTING LH	1
16	03.100.01	STUD M10 X 34MM	2
16	05.286.02	NUT M10 PLATED	6
17	08.128.03	ADAPTR 1"BSP BULKHEAD C/W LNUT	2
18	03.231.11	RUBBER EDGING 235MM LONG	1
20	05.292.11	BOLT M10 X 80MM PLATED	1
20	05.953.01	GREASE NIPPLE M6	2
20	43292.32	PIN 40 DIA X 557	1
20	05.287.02	SELF-LOCKING NUT M10 PLATED	1

* MAIN PART IN GROUP, RELATED PARTS HAVE SAME REFERENCE NUMBER

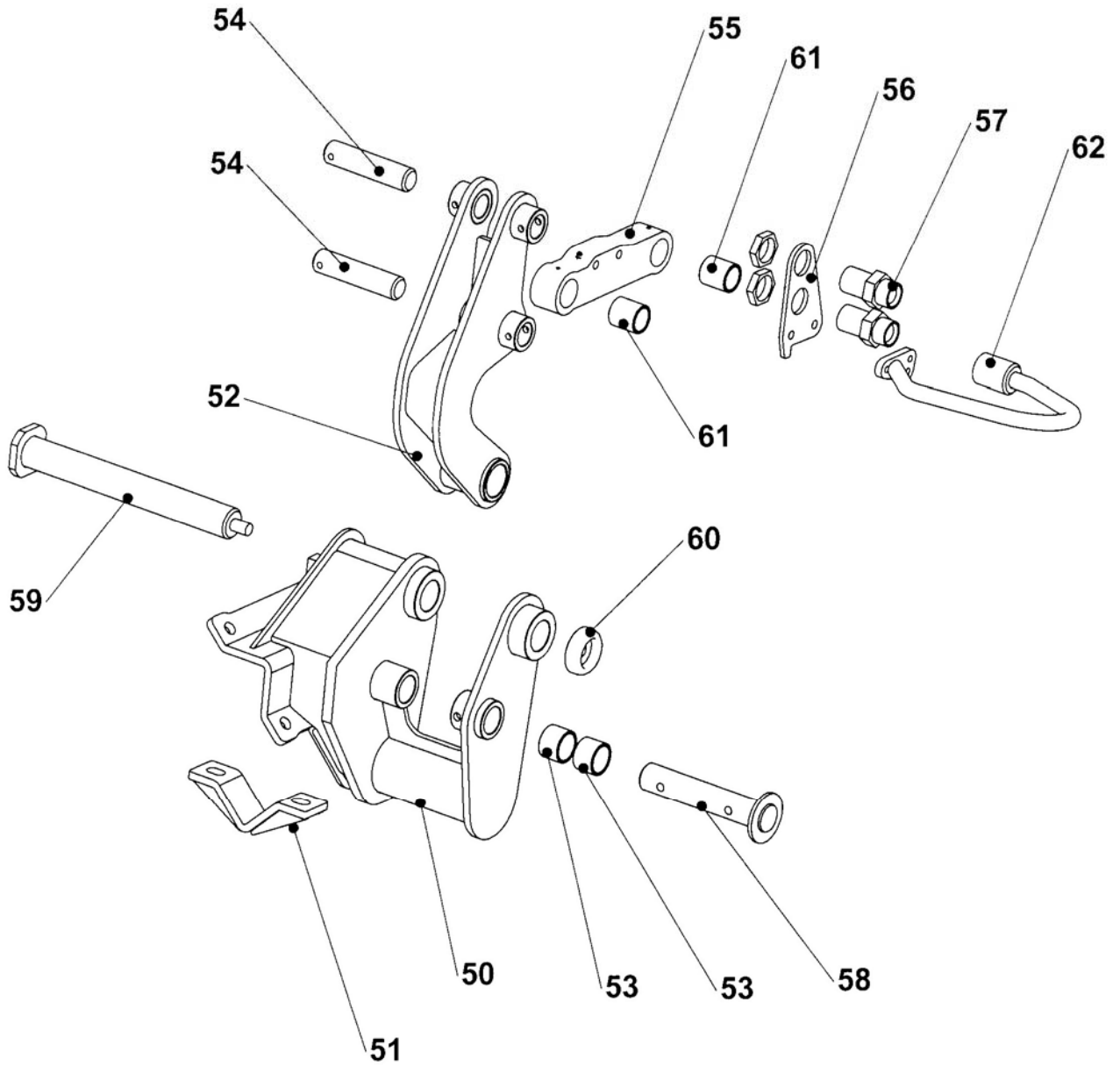


REF	PART NO.	DESCRIPTION	QTY
77.169.04 ARM ASSY - INTER BEAM RH 9727			
60	46160.04	BEAM - INTERMEDIATE RH FRONT	1
61	08.297.02	BUSH - PLASTIC 47 X 40 X 40	2
62	05.287.02	SELF-LOCKING NUT M10 PLATED	1
62	05.292.11	BOLT M10 X 80MM PLATED	1
62	05.953.01	GREASE NIPPLE M6	2
62*	43292.33	PIN 40 DIA X 374	1
63*	03.654.89	PIN 30 DIA X 170	1
63	05.287.01	SELF-LOCKING NUT M8 PLATED	1
63	05.291.06	BOLT M8 X 55MM PLATED	1
64*	03.654.74	PIN 30DIA X 260	1
64	05.287.01	SELF-LOCKING NUT M8 PLATED	1
64	05.291.06	BOLT M8 X 55MM PLATED	1
66	45630.02	HOSE CLAMP 1" X 3/8"	1
67	06.418.05	CLAMP PLATE 95 X 6	1
68	30.217.76	HOSE TWIN CLAMP	1
69*	04.282.09	STUD M10 X 85MM	1
69	05.282.02	SPRING WASHER 10MM PLATED	1
69	9100025	NUT DOMED M10 PLATED	1
70	04.282.69	STUD - M10 X 105	1
73	09.232.01	THRUST WASHER	1

77.112.10 ARM ASSY 2ND RH 5.5

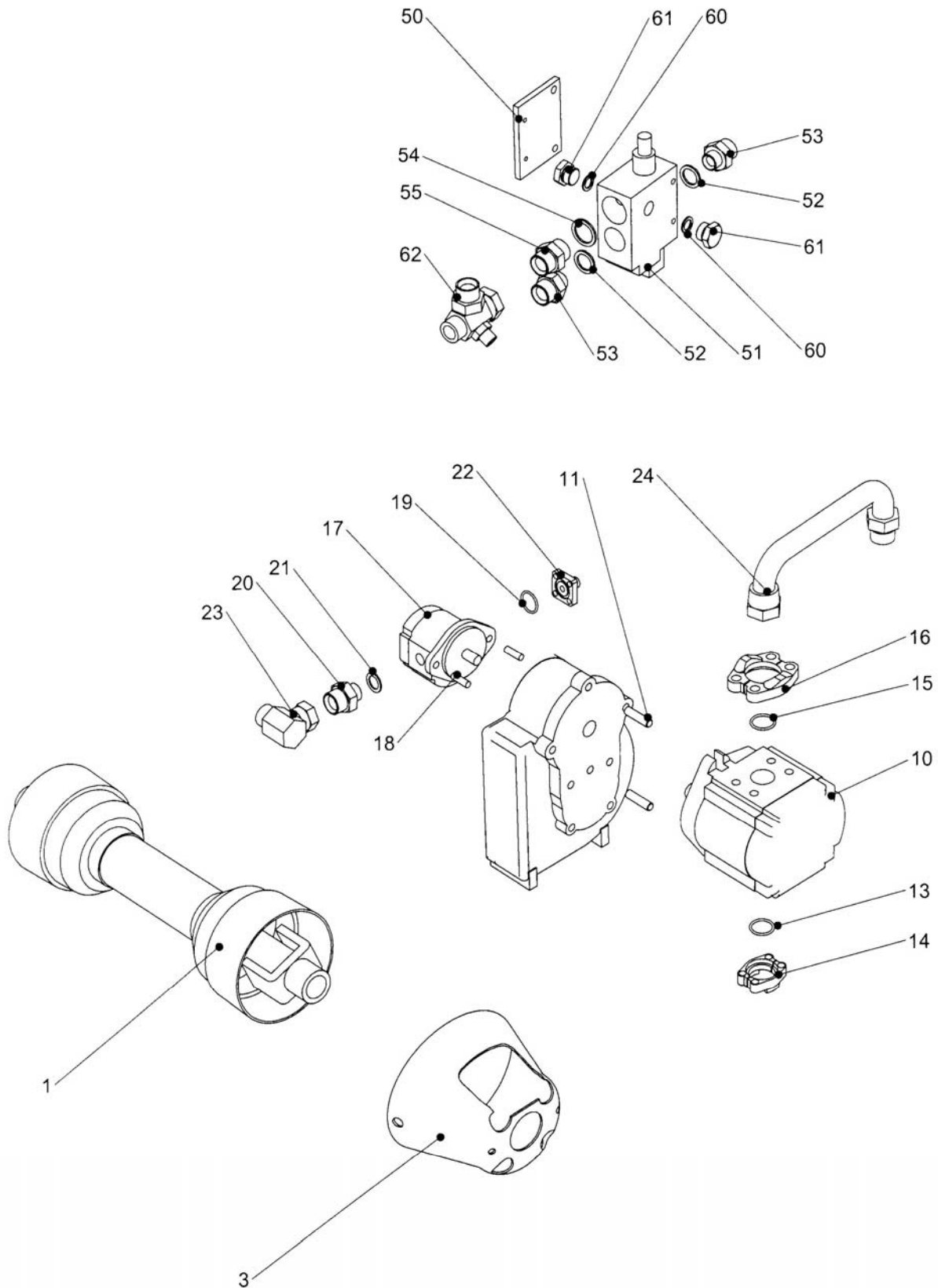
30	05.953.04	GREASE NIPPLE M10 90 DEG	1
30*	46167.04	ARM RH 5.5 FWD	1
31	08.297.02	BUSH - PLASTIC 47 X 40 X 40	4
32	05.287.02	SELF-LOCKING NUT M10 PLATED	1
32	05.292.21	BOLT M12 X 80MM PLATED	1
32	05.953.01	GREASE NIPPLE M6	2
33*	03.654.89	PIN 30 DIA X 170	1
33	05.287.01	SELF-LOCKING NUT M8 PLATED	1
33	05.291.06	BOLT M8 X 55MM PLATED	1
34*	03.654.79	PIN - DIA 30 X 214	1
34	05.287.01	SELF-LOCKING NUT M8 PLATED	1
34	05.291.06	BOLT M8 X 55MM PLATED	1
35	46173.04	GUARD HOSE 2ND ARM RH	1
36*	04.282.84	STUD M10 X 1.5 - 95 LONG	2
36	05.281.02	FLT WASHER 10MM PLATED FORM C	4
36	05.286.02	NUT M10 PLATED	2
36	9100025	NUT DOMED M10 PLATED	2
37	06.418.05	CLAMP PLATE 95 X 6	2
38	30.217.76	HOSE TWIN CLAMP	2
39	45630.01	HOSE CLAMP	2
40	03.231.13	RUBBER EDGING 212MM	1
41	03.654.95	PIN 30 DIA X 278	1
41	05.287.01	SELF-LOCKING NUT M8 PLATED	1
41	05.291.06	BOLT M8 X 55MM PLATED	1
42	04.282.09	STUD M10 X 85MM	1
42	05.281.02	FLT WASHER 10MM PLATED FORM C	1
42	43423.01	BRACKET - HOSE CLAMP	1
42	9100025	NUT DOMED M10 PLATED	1

* MAIN PART IN GROUP, RELATED PARTS HAVE SAME REFERENCE NUMBER



REF	PART NO.	DESCRIPTION	QTY
77.108.02 HEAD ANGLING BRACKET ASSY RH			
50	45949.02	BRACKET – HAD ANGLING RH	1
51	05.264.37	SETSCREW M16 X 50MM PLATED	4
51	05.282.04	SPRING WASHER 16MM PLATED	4
51	05.286.04	NUT M16 PLATED	4
51*	45948.01	CLAMP – HEAD ANGLING 70X70	2
52	05.953.03	GREASE NIPPLE M10	1
52*	46090.01	LINK – HEAD ANGLING	1
53	08.297.05	PLASTIC BUSH - 42 X 35 - 30	2
54*	03.654.59	PIN - DIA 30 X 128	2
54	05.287.01	SELF-LOCKING NUT M8 PLATED	2
54	05.291.06	BOLT M8 X 55MM PLATED	2
55	05.953.01	GREASE NIPPLE M6	1
55	05.953.05	GREASE NIPPLE M6 X 90DEG	1
55*	45950.01	LINK – HEAD ANGLING	1
56	45491.01	PLATE - BULKHEAD	1
57	08.128.03	ADAPTR 1"BSP BULKHEAD C/W LNUT	2
58*	03.655.27	PIN 35 DIA X 184	1
58	05.287.02	SELF-LOCKING NUT M10 PLATED	1
58	05.291.18	BOLT M10 X 65 PLATED	1
59	00.372.01	LINCH PIN	1
59	05.282.04	SPRING WASHER 16MM PLATED	1
59	05.286.04	NUT M16 PLATED	1
59*	45951.01	PIN - PIVOT 40 DIA	1
60	07.942.03	WASHER - SPECIAL M16	1
61	08.297.10	PLASTIC BUSH - 37 X 30 - 40	2
62	04.282.76	STUD - M10 X 70 PLATED	2
62	05.287.02	SELF-LOCKING NUT M10 PLATED	2
62*	45954.01	GUARD - BULKHEAD	1

* MAIN PART IN GROUP, RELATED PARTS HAVE SAME REFERENCE NUMBER



(1866 - 0402)

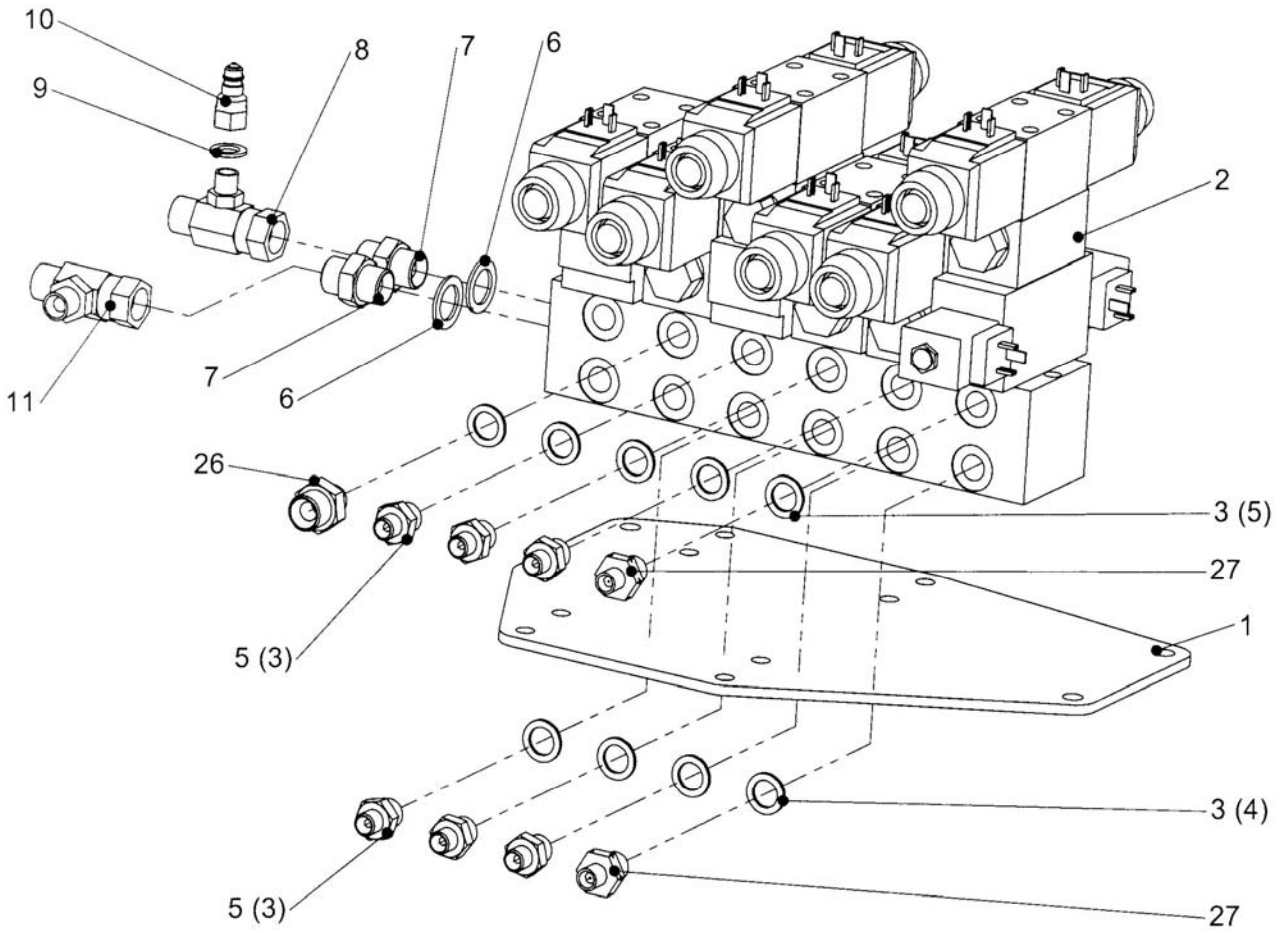
REF	PART NO.	DESCRIPTION	QTY
77.107.03 PTO/GEARBOX/PUMPS ELECT LH			
01	04.402.02	P.T.O GUARD ASSY 560MM C/C	0
01	06.154.13	PTO JOURNAL BEARING KIT	0
01*	41624.01	PTO SHAFT ASSY 560 MM C/C	1
01	41624.31	CROSS JOURNAL SET	0
01	41624.32	COMPLETE SHIELD	0
02	04.174.01	STUD M12 X 38MM	4
02	05.968.03	SELF LOCKING NUT M12 (FINE)	4
02*	42693.02	GEARBOX 3:1 CAST IRON	1
02	46749.01	GEARBOX DECAL	1
03	05.281.01	FLAT WASHER 8MM PLATED	2
03	05.282.01	SPRING WASHER 8MM PLATED	2
03	05.839.03	SETSCREW M8 X 16MM PLATED	2
03*	08.548.01	GUARD - PLASTIC PTO CUP	1
10	09.536.03	GEAR PUMP 3P	1
10	05.453.01	SEAL KIT (0547901/0953601)	0
11*	04.282.74	STUD - M12 X 49	2
11	05.281.03	FLAT WASHER 12MM PLATED	2
11	05.287.03	SELF-LOCKING NUT M12 PLATED	2
12	41421.01	GASKET - PUMP FACE	1
13	8600124	O RING 200-219-4490	1
14*	01.697.03	SPLIT FLANGE (2) 1"SAE 3000PSI	1
14	05.256.13	SETSCREW 3/8"UNCX1.1/4"PLATED	4
15	8600303	O RING 200-225-4490	1
16	0342104	CAPSCREW 1/2"UNC 1.1/4"LGBZP	4
16*	41.294.01	SPLT FLNGE (2) 1.1/2"SAE3000PSI	1
17	09.537.22	GEAR PUMP -	1
17	09.537.04	SEAL KIT PX PUMPS	0
18*	03.100.01	STUD M10 X 34MM	2
18	05.287.02	SELF-LOCKING NUT M10 PLATED	2
19	30.210.92	O RING 200-121-4490	1
20	30.059.84	ADAPTOR 1/2 BSPM / 1 BSPM	1
21	05.290.05	BONDED SEAL 1/2"BSP	1
22	05.657.01	SCKT CAPSCRW 5/16"UNCX7/8" PLT	4
22	09.745.01	ADAPTOR-FLANGE 3/8"BSP PLATED	1
23	05.835.02	ADAPTOR-SWIVEL 90 1"BSP M/F	1
24	46127.01	PIPE HYDRAULIC 1" BSP	1

77.126.01 PUMP CIRCUIT ELECTRIC LH

50	05.282.01	SPRING WASHER 8MM PLATED	2
50	05.291.07	BOLT M8 X 60MM PLATED	2
50*	46058.01	PLATE - VALVE MOUNTING	1
51	08.943.01	RELIEF VALVE/DIVERTER-ELECTRIC	1
52	05.290.06	BONDED SEAL 3/4"BSP	2
53	05.373.01	ADAPTOR 3/4"BSP X 1"BSP	2
54	05.290.07	BONDED SEAL 1"BSP	1
55	05.434.01	ADAPTOR 1"BSP X 1"BSP	1
58	05.434.01	ADAPTOR 1"BSP X 1"BSP M	2
59	05.433.03	PLUG 1"BSP PLATED	2
60	05.290.04	BONDED SEAL 3/8"BSP	2
61	05.433.01	PLUG 3/8"BSP PLATED	2
62	04.056.46	ADAPTOR-SPECIAL M/M/M/F	1

M NOT ILLUSTRATED

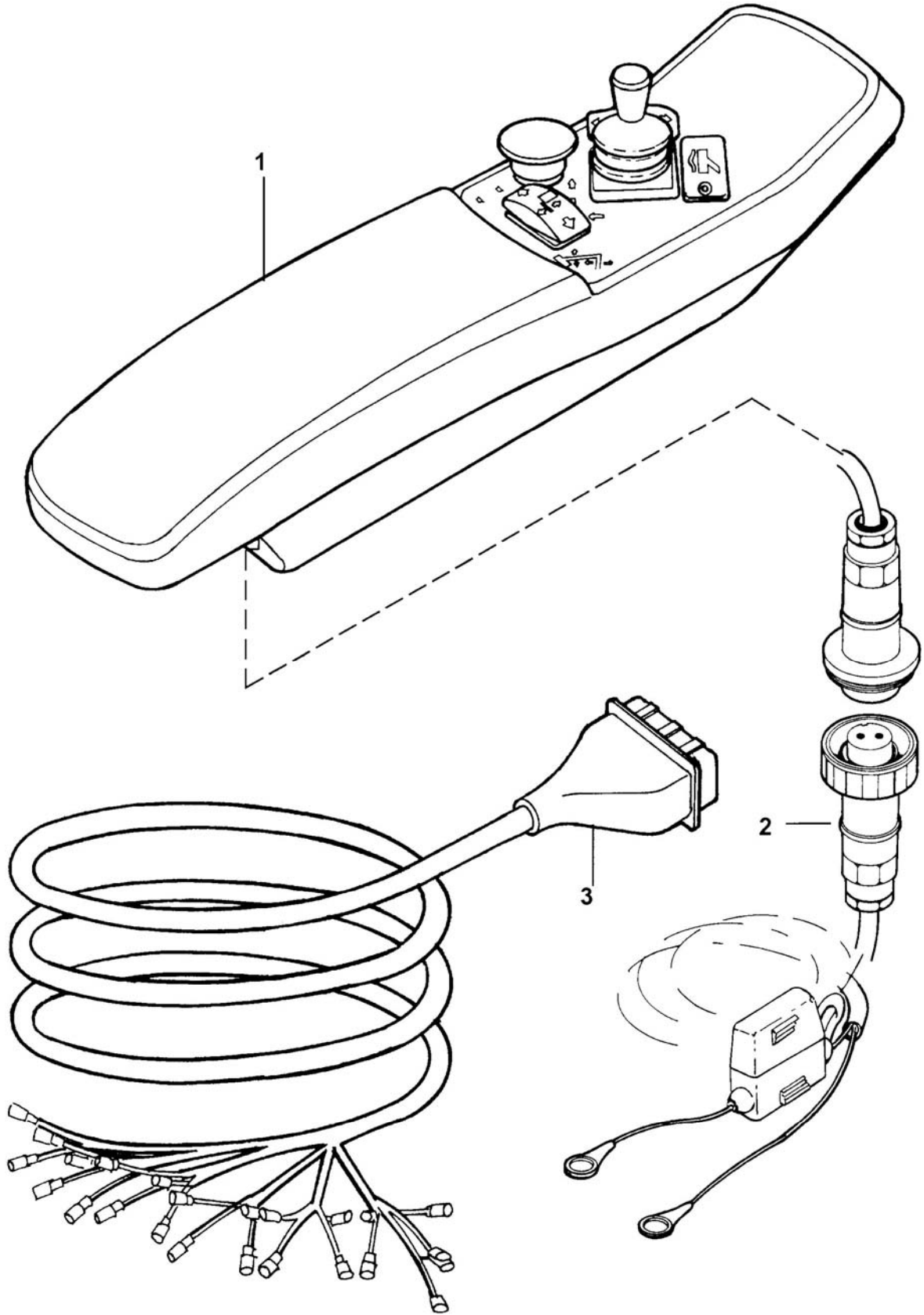
- MAIN PART IN GROUP, RELATED PARTS HAVE SAME REFERENCE NUMBER



(1929 - 0405)

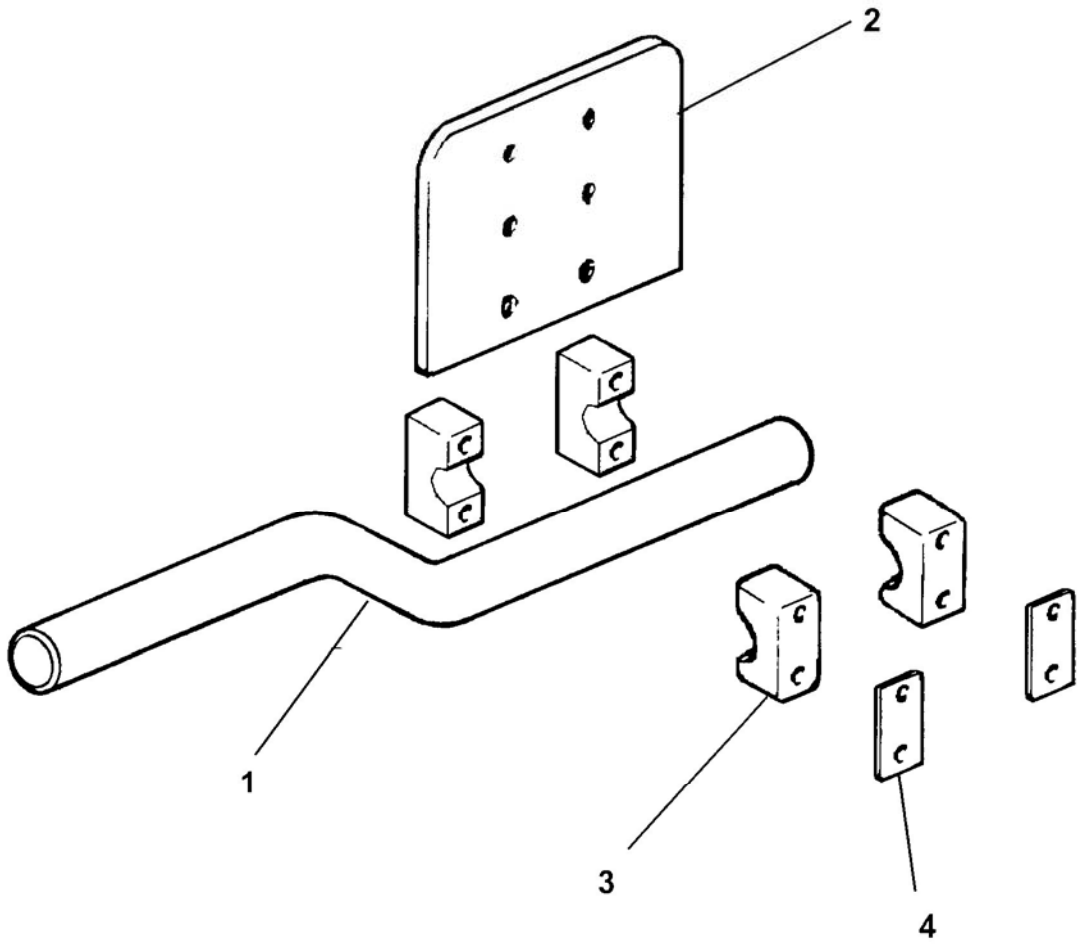
REF	PART NO.	DESCRIPTION	QTY
77.206.01 EPP II CONTROL VALVE ASSY			
01	46094.01	PLATE - VALVE MOUNTING -6MM PL	1
02*	41784.18	CONTROL VALVE PROP,5SERV +HF	1
02	41814.04	DECAL - 5 SERVICE	1
02	05.282.09	SPRING WASHER 5MM PLATED	4
02	30.073.93	SCREW M5 X 16MM 8.8 GRADE	4
02	08.852.04	CETOP 3 INTERFACE SEAL - VITON	0
03	05.290.04	BONDED SEAL 3/8"BSP	9
05	01.099.01	ADAPTOR 3/8" BSP X 1/4" BSP	6
06	05.290.05	BONDED SEAL 1/2"BSP	2
07	05.122.01	ADAPTOR 1/2" BSP X 1/2" BSP	2
08	04.056.25	ADAPTOR T FMM 1/2" X 1/2" X 1/4"	1
09	05.290.02	BONDED SEAL 1/4"BSP	1
10	05.146.12	QUICK RELEASE COUPLING	1
11	04.056.40	ADAPTOR - TEE 1/2F-1/2M-3/8M	1
26	05.123.01	ADAPTOR 1/2" BSP X 3/8" BSP	1
27	07.605.01	RESTRICTOR 3/8" BSP X 1/4" BSP	2

* MAIN PART IN GROUP, RELATED PARTS HAVE SAME REFERENCE NUMBER



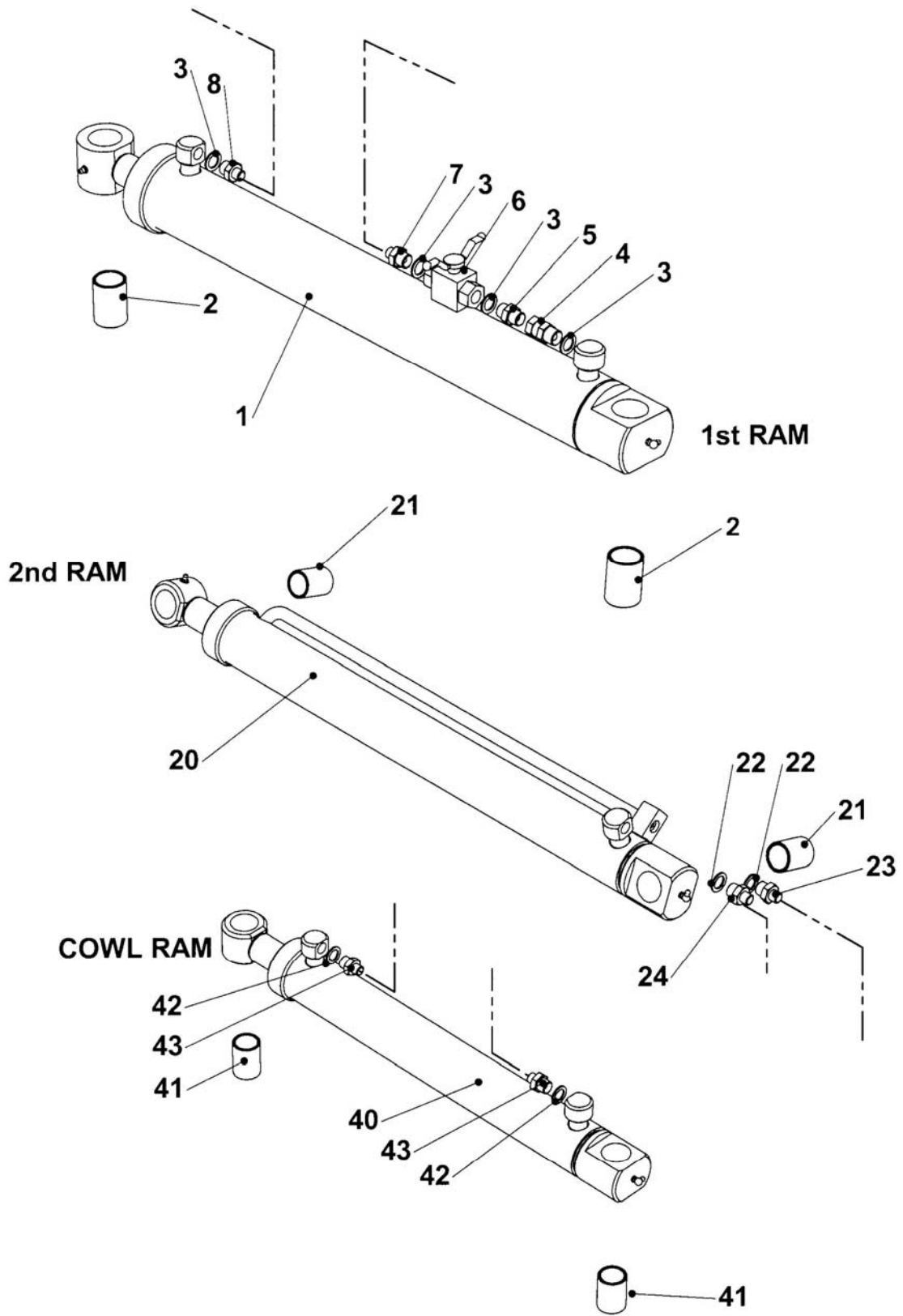
(1929 - 0405)

REF	PART NO.	DESCRIPTION	QTY
76.426.47	EPPII 5SV +HF + AF +MTR CNTRL		
01	42226.69	CONTROL BOX EPPII	1
02	06.616.02	FUSE - 15A IN-LINE	0
02	08.987.01	CABLE ASSY - 2 CORE X 5.65MHVY	1
03	42197.36	WIRE LOOM 6M	1



REF	PART NO.	DESCRIPTION	QTY
76.426.25 EPPIIM RCA CAB SIDE MNT 6359			
01	42312.02	BRACKET - MOUNTING	1
02	05.264.02	SETSCREW M8 X 25MM PLATED	2
02	05.281.01	FLAT WASHER 8MM PLATED	2
02	05.282.01	SPRING WASHER 8MM PLATED	2
02	05.948.07	WING NUT M8 - PLATED	2
02*	08.317.01	PLATE - CONTROL BOX - 6MM PLT	1
03	30.068.90	BOLT M6 X 55 MM 8.8 GRADE Z/P.	7
03	30.070.64	NUT NYLOC M6.Z/P.	4
03*	30.209.71	CLAMP SINGLE 1"	4
04	30.209.73	COVER PLATE	2
10	06.729.02	PLUG - PLASTIC 1"X10-12SWG	2
11	05.282.07	SPRING WASHER 6MM PLATED	3
11	05.948.37	WINGNUT - M6 X 1.0	3
11	30.068.88	BOLT M6 X 45 MM 8.8 GRADE Z/P.	2
11*	41.046.01	PLATE-LVR MTG - 6MM PLT	1

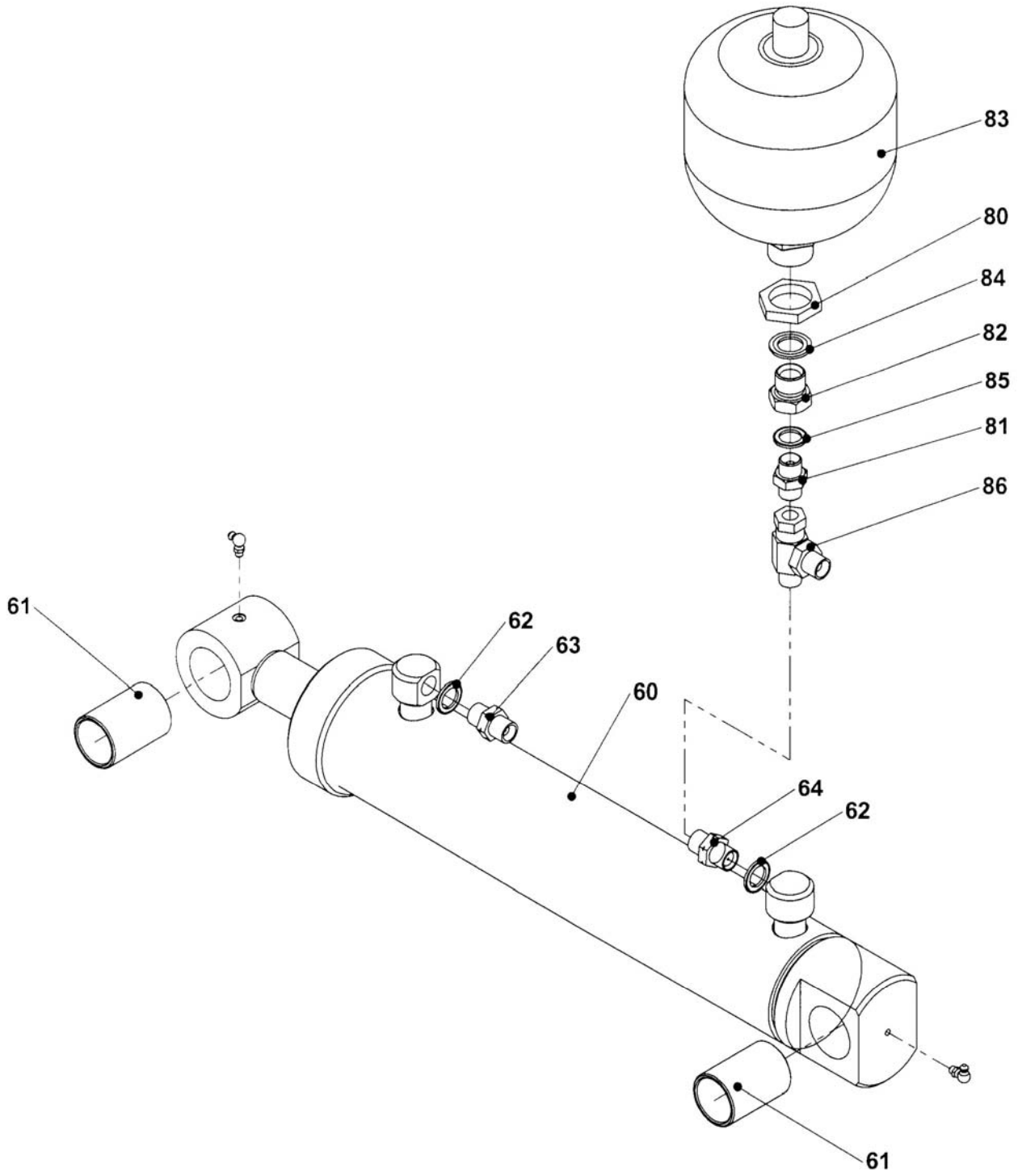
* MAIN PART IN GROUP, RELATED PARTS HAVE SAME REFERENCE NUMBER



(1929 - 0405)

REF	PART NO.	DESCRIPTION	QTY
77.104.01 RAM ASSY - FIRST 8852			
01	46002.26	SEAL KIT -46002(50ROD) RAM	0
01	05.953.01	GREASE NIPPLE M6	1
01	05.953.05	GREASE NIPPLE M6 X 90DEG	1
01*	46002.04	RAM ASSY D/A 80 BORE X 615 STK	1
02	08.297.08	PLASTIC BUSH - 42 X 35 - 60	2
03	05.290.04	BONDED SEAL 3/8"BSP	4
04	02.714.01	ADAPTOR-SWIVEL ST 3/8BSP M/F	1
05	05.124.01	ADAPTOR 3/8" BSP X 3/8" BSP	1
06	08.200.01	VALVE - ISOLATING 3/8" BSP	1
07	05.124.01	ADAPTOR 3/8" BSP X 3/8" BSP	1
08	05.124.01	ADAPTOR 3/8" BSP X 3/8" BSP	1
77.114.05 RAM ASSY - SECOND			
20	05.953.01	GREASE NIPPLE M6	1
20	05.953.05	GREASE NIPPLE M6 X 90DEG	1
20	46177.02	RAM ASSY D/A 70 BORE X 605 STK	1
21	08.297.14	PLASTIC BUSH37 X 30 - 50	2
22	05.290.04	BONDED SEAL 3/8"BSP	2
23	01.099.01	ADAPTOR 3/8" BSP X 1/4" BSP	1
24	01.099.01	ADAPTOR 3/8" BSP X 1/4" BSP	1
77.113.01 RAM ASSY – HEAD ANGLING			
40	05.953.01	GREASE NIPPLE M6	1
40	05.953.05	GREASE NIPPLE M6 X 90DEG	1
40*	45990.01	RAM ASSY D/A 60 BORE X 430 STK	1
41	08.297.14	PLASTIC BUSH37 X 30 - 50	2
42	05.290.04	BONDED SEAL 3/8"BSP	2
43	46518.08	RESTRICTOR 3/8"X1/4"BSP 1.27	1
44	46518.14	RESTRICTOR 3/8"X1/4"BSP 0.75	1

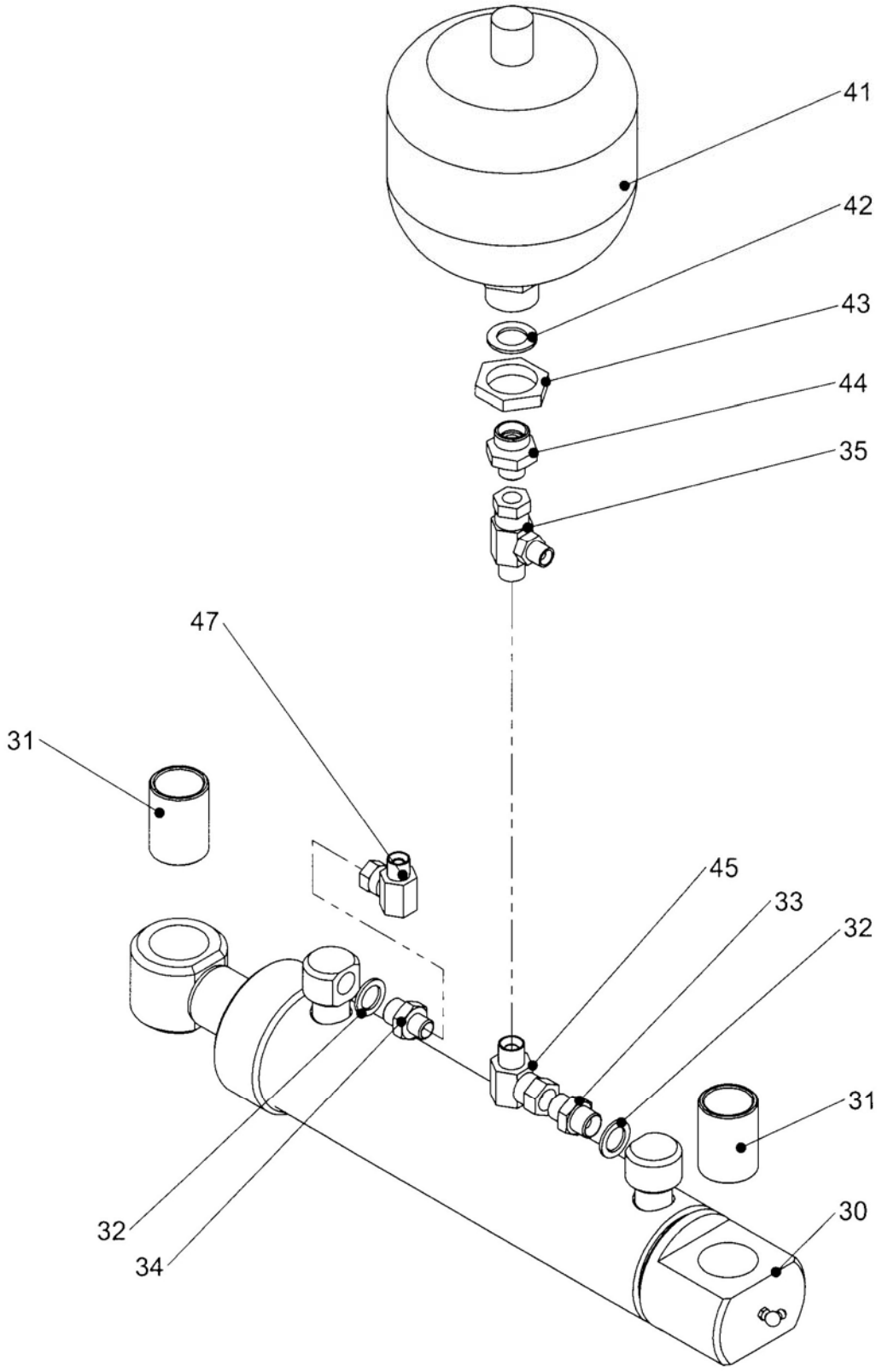
* MAIN PART IN GROUP, RELATED PARTS HAVE SAME REFERENCE NUMBER



(1909 - 0405)

REF	PART NO.	DESCRIPTION	QTY
77.111.02 RAM ASSY SLEW			
60	05.953.01	GREASE NIPPLE M6	1
60	05.953.05	GREASE NIPPLE M6 X 90DEG	1
60*	45942.01	RAM ASSY D/A 60 BORE X 340 STK	1
61	08.297.14	PLASTIC BUSH37 X 30 - 50	2
62	05.290.04	BONDED SEAL 3/8"BSP	2
63	46518.08	RESTRICTOR 3/8"X1/4"BSP 1.27	1
64	46518.14	RESTRICTOR 3/8"X1/4"BSP 0.75	1
77.117.01 ACCUMULATOR - SLEW ASSY			
80	8126035	M33 BULKHEAD NUT 'THIN'	1
81	46518.08	RESTRICTOR 3/8" BSP X 1/4" BSP 1.27	1
82	8581284	ADAPTOR M22 X 3/8"BSP MF	1
83	8126043	ACCUMULATOR 1.4LT - 90 BAR	1
84	8650322	M22 BONDED SEAL	1
85	05.290.04	BONDED SEAL 3/8"BSP	1
86	04.056.10	ADAPTOR-TEE 1/4" BSPF/M/M	1

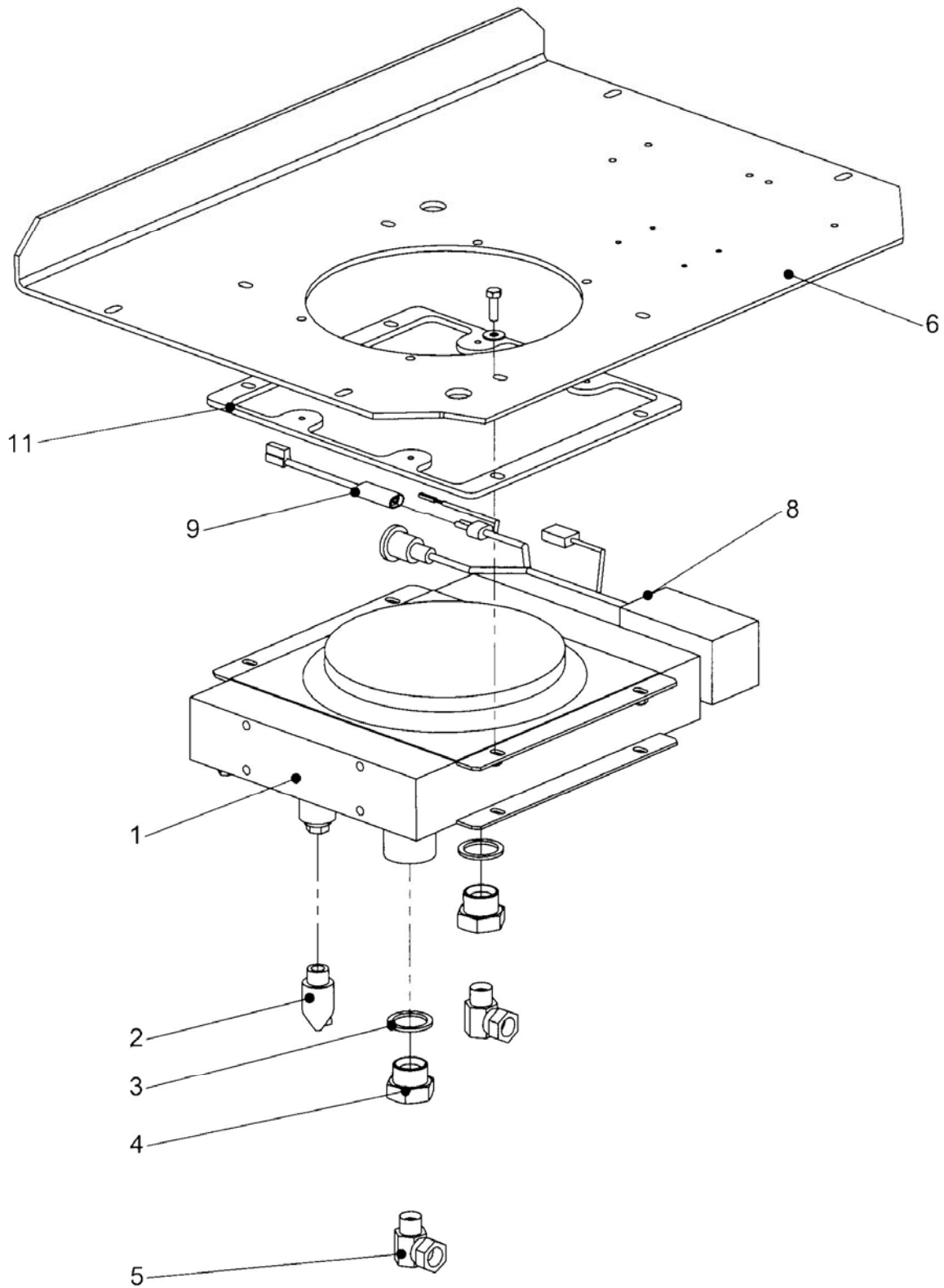
* MAIN PART IN GROUP, RELATED PARTS HAVE SAME REFERENCE NUMBER



(1929 - 0405)

REF	PART NO.	DESCRIPTION	QTY
77.170.01 RAM ASSY - BREAKOUT 9727			
30	05.953.01	GREASE NIPPLE M6	2
30*	46177.01	RAM ASSY 70 BORE X 240 STROKE	1
31	08.297.14	PLASTIC BUSH 37 X 30 - 50	2
32	05.290.04	BONDED SEAL 3/8"BSP	2
33	05.124.01	ADAPTOR 3/8" BSP X 3/8" BSP	1
34	01.099.01	ADAPTOR 3/8" BSP X 1/4" BSP	1
35	11.068.69	ADAPTOR-TEE 3/8F-3/8M+3/8M	1
41	8126044	1L ACCUMULATOR - 25B P/CHARGE	1
42	8650322	M22 BONDED SEAL	1
43	8126035	M33 BULKHEAD NUT 'THIN'	1
44	G2410380	3/8" BSP X M22 M-M ADAPTOR	1
45	05.835.01	ADAPTOR-SWIVEL 90 - 3/8"BSP M/F	1
47	05.835.04	ADAPTOR SWIVEL 90 - 1/4" BSP	1

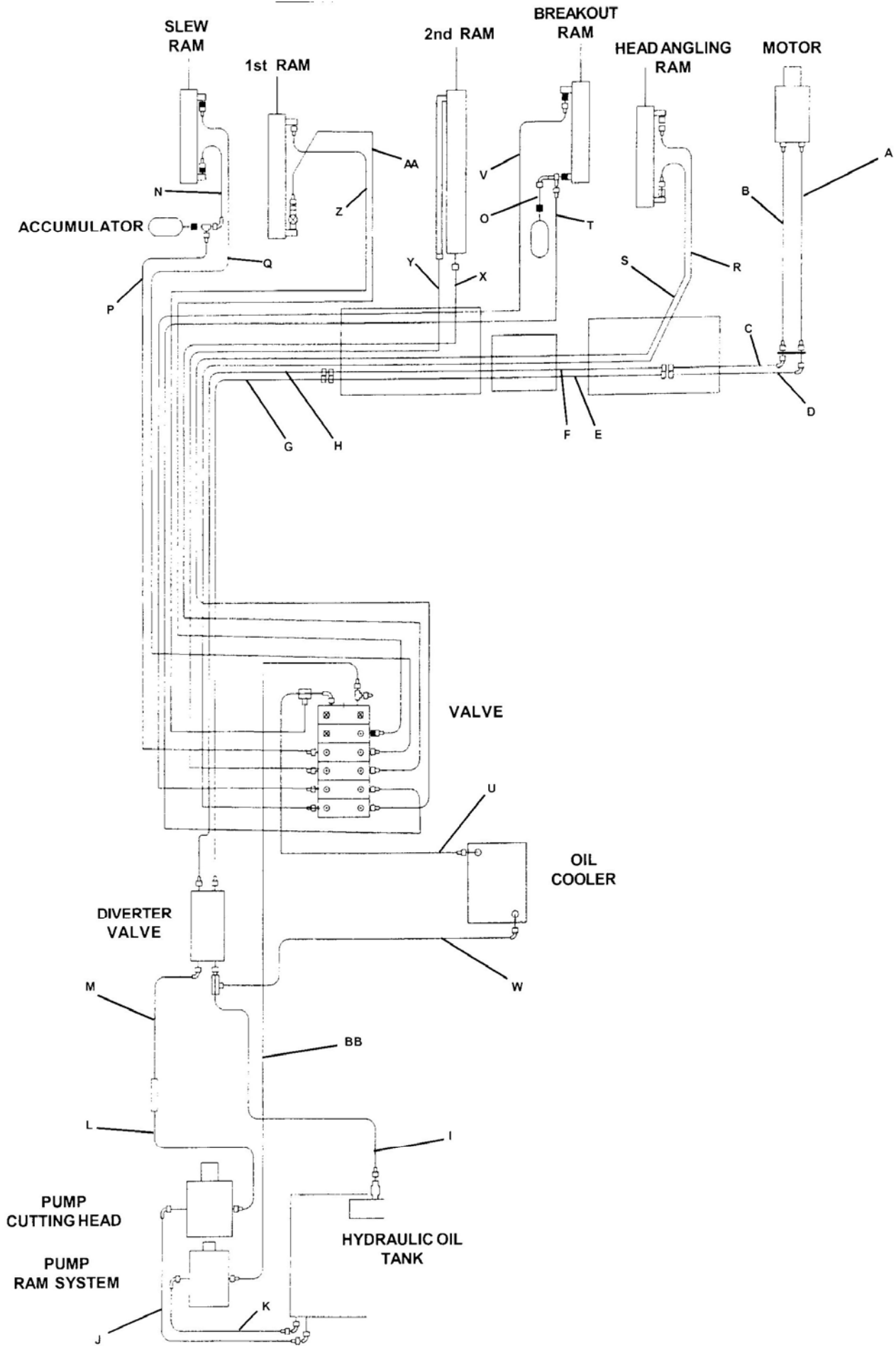
* MAIN PART IN GROUP, RELATED PARTS HAVE SAME REFERENCE NUMBER



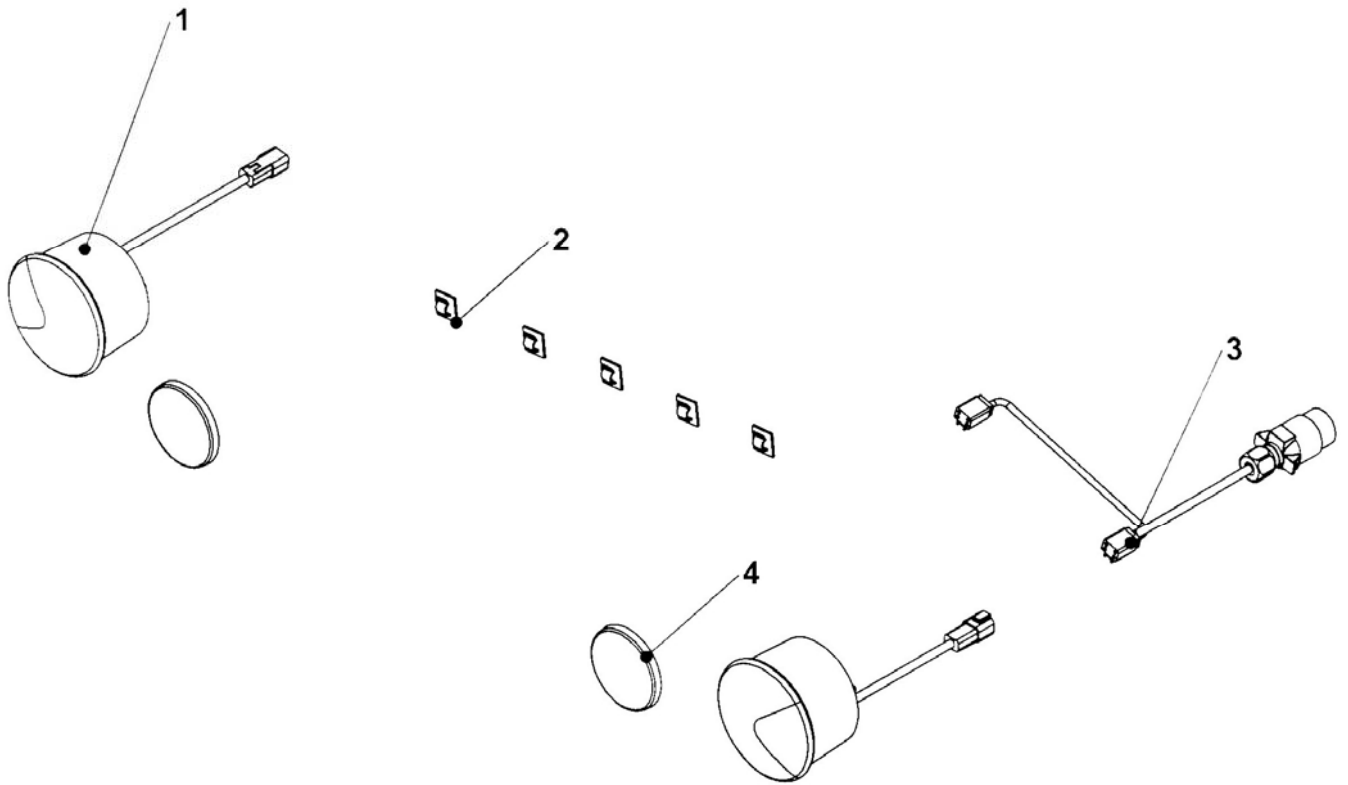
(1918-0704)

REF	PART NO.	DESCRIPTION	QTY
77.146.05 OIL COOLER ASSY			
01	45324.01	OIL COOLER (BLACK)	1
02	45324.02	THERMOSTAT FOR 45324.01	1
03	05.290.07	BONDED SEAL 1"BSP	2
04	30.059.84	ADAPTOR 1/2 BSPM / 1 BSPM	2
05	05.835.05	ADAPTOR-SWIVEL 90 1/2"BSP M/F	2
06	05.264.01	SETSCREW M8 X 20MM PLATED	4
06	05.281.01	FLAT WASHER 8MM PLATED	4
06	05.282.01	SPRING WASHER 8MM PLATED	4
06*	46713.02	PLATE - COOLER MOUNT RH	1
06	9100025	NUT DOMED M10	4
06	30.068.81	SETSCREW M6 X 12MM	2
06	30.068.83	SETSCREW M6 X 20MM	2
07	03.816.01	PLUG-RUBBER 25MM DIA	1
08	46138.01	LOOM OIL COOLER DCU CONTROLS	1
09	46650.01	CABLE-CONNECT OIL CLR TO RELAY	1
10	08.987.02	CABLE ASSY - 5.65M	1
11	05.282.07	SPRING WASHER 6MM PLATED	4
11	05.839.05	SETSCREW M6 X 16MM PLATED	4
11*	46198.02	PLATE - 6 - 300 X 360	1
11	30.216.54	RIVNUT M8	4

* MAIN PART IN GROUP, RELATED PARTS HAVE SAME REFERENCE NUMBER

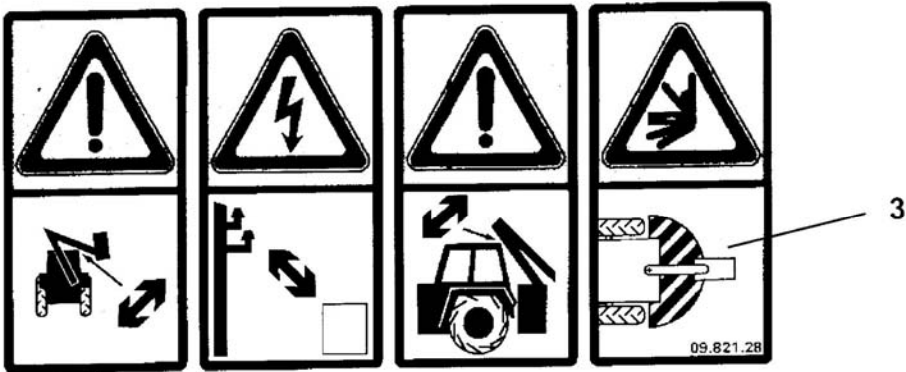
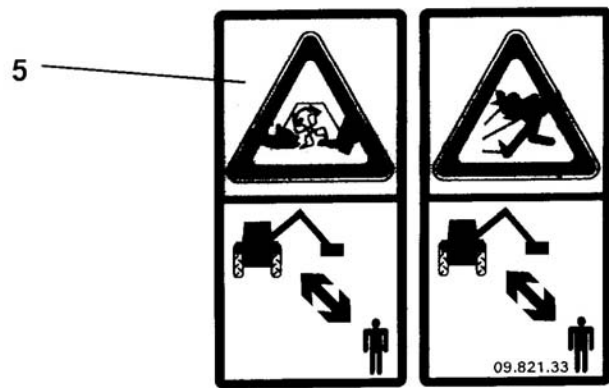


REF	PART NO.	DESCRIPTION	QTY
46140.28 HOSE KIT			
A	10.011.22	HOSE 1"BSP – STXST - 1200.	1
B	10.011.22	HOSE 1"BSP – STXST - 1200.	1
C	10.025.21	HOSE 1"BSP – STX135 - 1100	1
D	10.025.22	HOSE 1"BSP – STX135 - 1200	1
E	10.012.62	HOSE 1"BSP – STX90 - 5200	1
F	10.012.62	HOSE 1"BSP – STX90 - 5200	1
G	10.011.27	HOSE 1"BSP – STXST - 1700	1
H	10.011.27	HOSE 1"BSP – STXST - 1700	1
I	10.012.17	HOSE 1"BSP – STX90 -	1
J	10.024.04	HOSE 1-1/2"BSP – F/SX90 - 600	1
K	10.012.10	HOSE 1"BSP – STX90 - 500	1
L	10.022.38	HOSE 1"BSP – STX90 - 650	1
M	10.011.10	HOSE 1"BSP – STXST - 500	1
N	10.002.10	HOSE 1/4"BSP – STX90 - 500	1
O	10.004.10	HOSE 3/8"BSP – STX90 - 500	1
P	10.002.26	HOSE 1/4"BSP – STXST - 1600	1
Q	10.002.26	HOSE 1/4"BSP – STXST - 1600	1
R	10.001.86	HOSE 1/4"BSP – STXST - 7600	1
S	10.001.86	HOSE 1/4"BSP – STXST - 7600	1
T	10.001.63	HOSE 1/4"BSP – STXST - 5300	1
U	10.006.20	HOSE 1/2"BSP – STX90 - 1000	1
V	10.001.63	HOSE 1/4"BSP – STXST - 5300	1
W	10.006.20	HOSE 1/2"BSP – STX90 - 1000	1
X	10.001.45	HOSE 1/4"BSP – STXST - 3500	1
Y	10.001.45	HOSE 1/4"BSP – STXST - 3500	1
Z	10.003.53	HOSE 3/8"BSP – STXST - 4300	1
AA	10.003.53	HOSE 3/8"BSP – STXST - 4300	1
BB	10,004,25	HOSE 3/8"BSP – STX90 - 1500	1
	43234.22	HOSE SLEEVE (350) TYPE 800MM	1
	43234.42	HOSE SLEEVE 950 TYPE C 350	1
	43234.44	HOSE SLEEVE 1300 TYPE C 350	1
	43542.05	HOSE SLEEVE(350) X 1500	1
	43542.06	HOSE SLEEVE(350) X 1700	2
	43543.05	HOSE SLEEVE (170) X 800	1
	7106187	NYLON STRAP HOSE	3



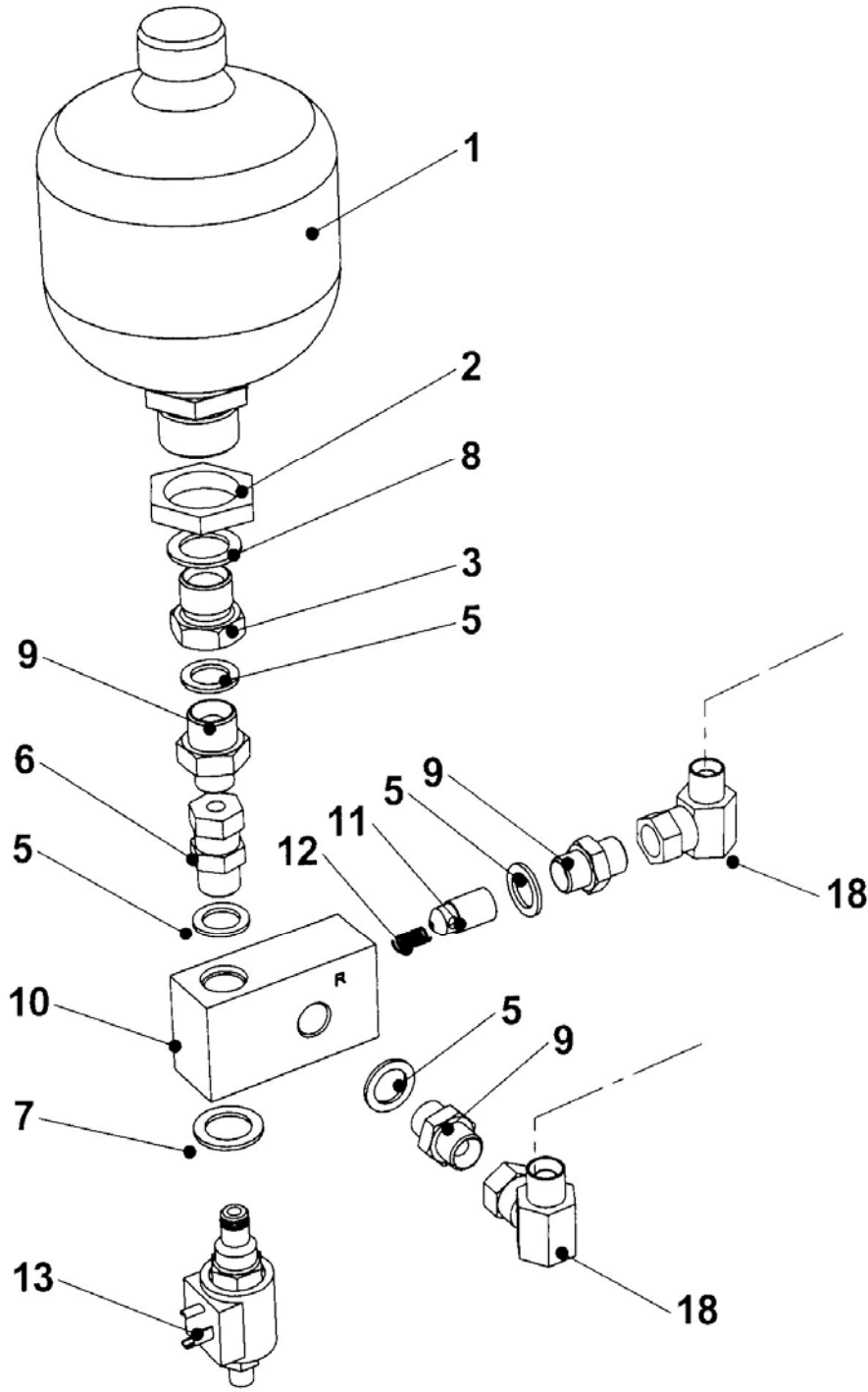
(1866-0502)

REF	PART NO.	DESCRIPTION	QTY
77.134.01		LIGHT KIT FALCON LH 8852	
	45662.03	LIGHTING KIT LH (FALCON)	1



(1918-0704)

REF	PART NO.	DESCRIPTION	QTY
77.138.01 DECALS ENGINEERING 8852			
1	08.632.01	DECAL - TRANSPORT	1
2	09.811.04	DECAL - MAX PTO SPEED 540 ACW	1
3	09.821.28	DECALS-EURO DECAL MINIATURISED	1
4	09.821.32	DECALS-EURO DECAL MINIATURISED	1
5	09.821.33	DECALS-EURO DECAL MINIATURISED	1
6	09.821.34	DECALS-EURO DECAL MINIATURISED	1
7	09.843.06	DECAL - LIFT POINT 1500 KG	1
8	09.845.01	DECAL - APPROVED OILS	1
9	09.846.02	DECAL - OIL FILTER CHANGE	1
10	46681.01	DECAL - LEG POSITION WHEN PARK	1
77.137.02 DECALS MARKETING FALCON 5.5			
21	45645.01	DECAL - BOMFORD (72MM FONT)	1
22	45645.02	DECAL - BOMFORD (50MM FONT)	1
32	46151.01	DECAL - FALCON 5.5 SMALL	1
24	46152.01	DECAL - FALCON 5.5 LARGE	1



(1866 - 0502)

REF	PART NO.	DESCRIPTION	QTY
77.122.01 ARM FLOAT KIT ELECTRIC 8852			
01	41715.03	ACCUMULATOR - 1.4LT (30 BAR)	1
02	8126035	M33 BULKHEAD NUT 'THIN'	1
03	8581284	ADAPTOR M22 X 3/8"BSP MF	1
05	05.290.04	BONDED SEAL 3/8"BSP	4
06	02.714.01	ADAPTOR-SWIVEL ST 3/8BSP M/F	1
07	05.290.05	BONDED SEAL 1/2"BSP	1
08	8650322	M22 BONDED SEAL	1
09	05.124.01	ADAPTOR 3/8" BSP X 3/8" BSP	3
10	8126287	VALVE BLOCK-LIFT FLOAT	1
11	8126037	RESPONSE PISTON	1
12	8116011	SPRING	1
13	8130183	POPPET VALVE NC	1
14	1290061	OPERATION DECAL	1
15	45720.01	LOOM EXTENSION - ARM FLOAT (NOT ILLUSTRATED)	1
17	10.004.21	HOSE 3/8"BSP STX90 S.SEAL 1100	1
18	05.835.01	ADAPTOR-SWIVEL 90 3/8"BSP M/F	2