

Publication No. **859**

# BE

# DYNA - DRIVE

**2.4M 3.0M 3.4M**

**3.8M 4.4M 5.0M**

**CRUMBLER AND CRUMBLER  
MOUNTING BRACKET KIT**

**PARTS/INSTRUCTION  
MANUAL**

**BOMFORD & EVERSLED LTD BOMFORD & EVERSLED LTD**

**£5.00**

## **IMPORTANT !**

NOTE HERE THE SERIAL NUMBER OF YOUR MACHINE  
AND ALWAYS QUOTE IT IN ANY COMMUNICATIONS  
WITH US OR YOUR DEALER

THIS IS PARTICULARLY IMPORTANT  
WHEN ORDERING SPARES, OR QUERIES  
REGARDING THIS MANUAL

REMBER TO INCLUDE ALL NUMBERS AND LETTERS

MACHINE SERIAL NUMBER:-

MAINFRAME.....

THE INFORMATION GIVEN THROUGHOUT THIS MANUAL IS CORRECT  
AT THE TIME OF PUBLICATION, HOWEVER IN THE COURSE OF  
CONSTANT DEVELOPMENT OF BOMFORD MACHINES, CHANGES IN  
SPECIFICATION ARE INEVITABLE

ANYONE FINDING THE INFORMATION GIVEN IN THIS BOOK TO  
BE AT VARIANCE WITH THE MACHINE IN HIS POSSESSION IS  
ADVISED TO CONTACT THE SERVICE DEPARTMENT WHERE UP TO  
DATE INFORMATION WILL BE PROVIDED

## INDEX

NOTE: PAGE AND ILLUSTRATION NUMBERS SHOWN ARE USED ONLY FOR REFERENCE PURPOSES AND SHOULD NOT BE USED FOR ORDERING SPARE PARTS. PLEASE GIVE FULL PART NUMBER AND DESCRIPTION WHEN ORDERING SPARE PARTS.

| <u>PAGE NUMBER</u>          | <u>DESCRIPTION</u>                                      | <u>ISSUE NO</u> |
|-----------------------------|---|-----------------|
| <u>FITTING INSTRUCTIONS</u> |   |                 |
| 2 TO 3                      | 1. CRUMBLER MOUNTING BRACKET KIT FITTING INSTRUCTIONS.  | 0885            |
| 4                           | 2. CRUMBLER FITTING INSTRUCTIONS.                       | 0885            |
| 5                           | 3. LUBRICATION.   | 0885            |
| 6 TO 7                      | 4. CRUMBLER OPERATING INSTRUCTIONS.                     | 0885            |
| <u>PARTS LIST</u>           |   |                 |
| *8-1 TO 8-5                 | CRUMBLER AND MOUNTING BRACKET, ALL MODELS. (PARTS LIST) | 0885            |

\* WHERE A PARTS LIST HAS NECESSITATED TWO, THREE AND FOUR PAGES OF TEXT, THE CORRESPONDING ILLUSTRATION HAS BEEN REPEATED ON THE FACING PAGE PURELY FOR CONVENIENT REFERENCING.

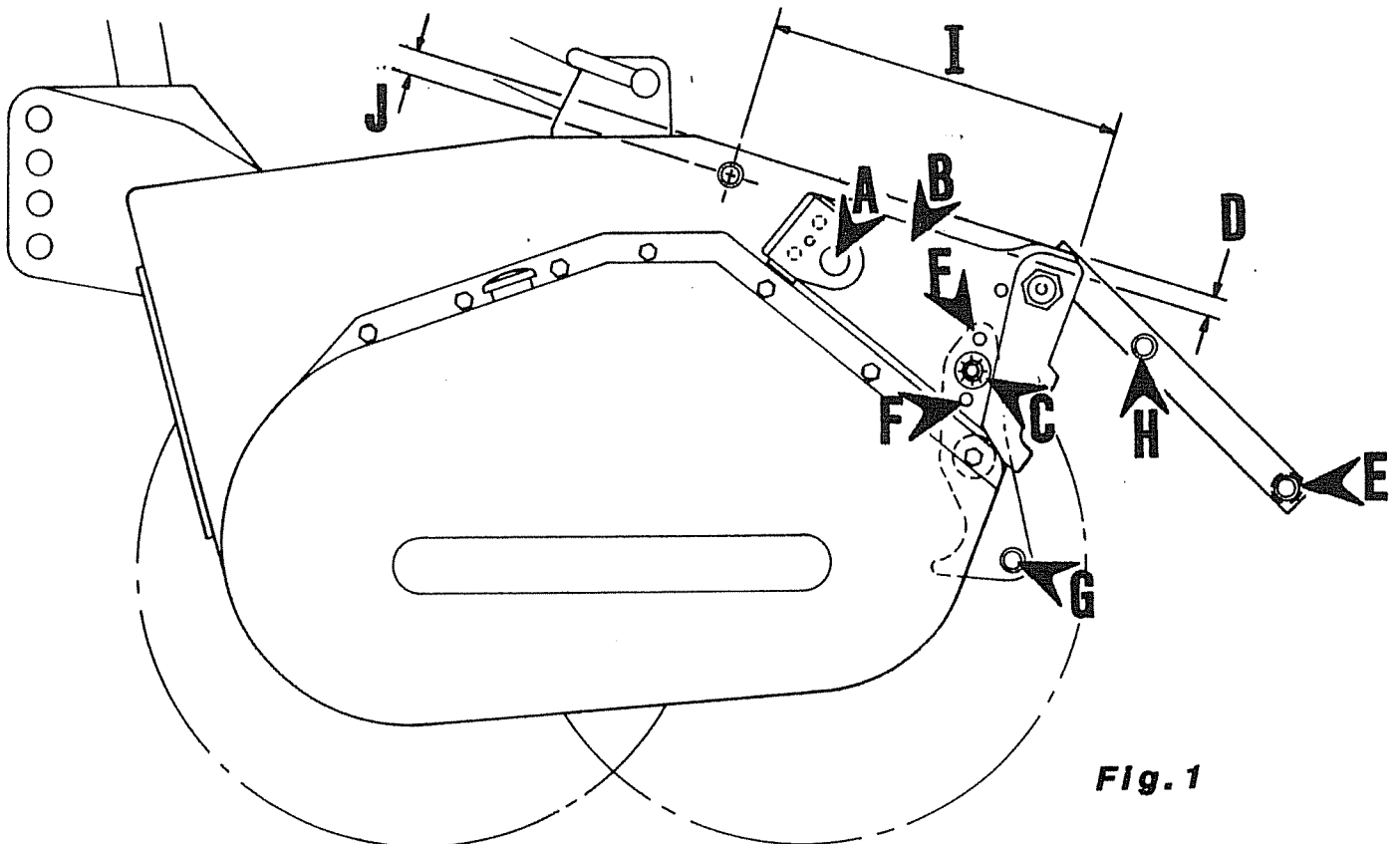
THE ILLUSTRATIONS AND TEXT COMBINE STANDARD, ALTERNATIVE AND OPTIONAL PARTS AND MUST NOT BE USED AS A PRODUCT SPECIFICATION.

NOTE: The terms left hand and right hand used in the text apply to the machine when viewed from the rear. If in any doubt consult Bomford and Evershed Ltd.

CHECK REAR OF MANUAL FOR UPDATES

## 1. CRUMBLER MOUNTING BRACKET KIT FITTING INSTRUCTIONS

For early production Dyna Drives without crumbler mounting holes, the following instructions must be followed. For models with crumbler mounting holes, start at instruction 6. For more recent models with integral mounting brackets a crumbler mounting kit is not required. See crumbler fitting instructions, page 4.



**Fig. 1**

1. Cut the upper flap-link pin flush with each end plate of the Dyna Drive (fig 1A). Grind off flat on the outside and the inside of the plates.
2. Remove crumbler mounting brackets (fig 1B) from their delivery packages.
3. Place each bracket against the end plate, locating it as follows:
  - a. Rear edge of bracket parallel to rear edge of end plate.
  - b. Flap link pin on end plate, central in bracket clearance hole (fig1C).
  - c. Top edge of bracket parallel to top edge of end plate (fig1D).

### NOTE

1. At the non-drive end it may be necessary to remove approx 40mm (1.1/2") from the narrow strip at the rear of the end plate to clear the bracket.
2. On certain models with integral mainframe flap hinges it may be necessary to grind a small amount of weld off the hinge pin, flush with the end plate, to allow the bracket to fit flat on the end plate.
4. Mark the position of the two holes shown (fig 1F) in each end plate through the bracket with a sharp point, pen or aerosol paint spray.

## 1. CRUMBLER MOUNTING BRACKET KIT FITTING INSTRUCTIONS

---

5. Drill both holes each end 12.5mm (1/2") diameter.
6. Bolt the crumbler mounting brackets and link pin brackets (fig1G if applicable) to the end plates with the M12 X 35mm setscrews, nuts and spring washers. Take care when positioning the link pin brackets, bolt them to the inside of the end plates with the pin facing outwards.

NOTE: These link pin brackets are not required on the 3.8M models.

7. Fully weld the crumbler mounting brackets and link pin mounting brackets in place.

### NOTE

- a) Although it is strongly recommended that you weld the packer mounting brackets in place, if for any reason you wish to bolt them in place using all the holes, M12 x 30 setscrews, nuts and spring washers are provided.
  - b) If your Dyna-Drive is an early 3.8m model, proceed to instruction 13.
8. Cut the two 16mm pins flush with the outer edge of the hinged flap, each end of the flap (fig1H - & E if applicable). Grind off flush with outer edge of flap.
  9. Position one of the longest weld-on pins (20dia x 74mm long) on each end of the hinged flap, approximately in line with the hinged flap tube (fig1E) and fully weld in place.
  10. Position one of the shorter weld-on pins (20dia x 44mm long) 250mm (10") from the longer pin. Fully weld centrally in place of the removed pin (Fig.1H) each end. Ensure that weld does not spread onto 20mm diameter portion of pin.
  11. Mark a centre approximately 30mm (1 1/4") from the pin you have just welded, near the edge of the hinged flap each end. Drill 6mm (1/4") diameter.
  12. Attach spring cotters/chain ring assemblies to the drilled holes.
  13. Position a short weld-on pin (20mmdia x44mm long) on each end plate 420mm (16 1/2") from rear edge of end plate,(fig1I) and 25mm (1") from top edge (fig1J). Fully weld in place.

## 2. CRUMBLER FITTING INSTRUCTIONS

1. Place the crumbler behind Dyna Drive with the crossbars raked forward at the top of the roller, as shown in fig 2.
2. Remove the bearing caps (fig 2 A) from the bearings and attach the trailing arms (fig 2 B) to each end of the crumbler by sliding the shafts through the bearings and through the crumbler tubes, from the outside. Distinguish left and right hand trailing arms by ensuring that the support pad for the depth adjustment plate, (fig 2 C) is facing upwards.
3. Secure bearings and shafts to the crumbler roller with the M30 castle nut, plain washer and split cotter 6.3dia x 63mm long. Replace bearing caps.
4. Ensuring hinged flap (fig 2 D) remains above crumbler, slide trailing arms into brackets (fig 2 E) and locate with the hand pins. Secure pins with the M10 x 20mm setscrews and spring washers.
5. Locate depth adjustment plates onto the mounting brackets. Be sure to locate left hand plate on left hand (drive end) of Dyna Drive. Both plates must be set to the same number.
6. For depth setting number required see operating instructions. Secure depth adjustment plates with M12 x 20mm setscrews and spring washers 1 3/4" O/D.
7. Connect trailing arms to hinged flap as shown, using flap links, (fig 2 F).
8. (5.0M MODELS ONLY). Remove control flap supporting links from Dyna Drive and clamp the two flaps together using the clamp brackets, M12 x 120mm bolts and self locking nuts provided. Fit clamp brackets as near to the rear of the flap as possible. See page 8, fig 5.

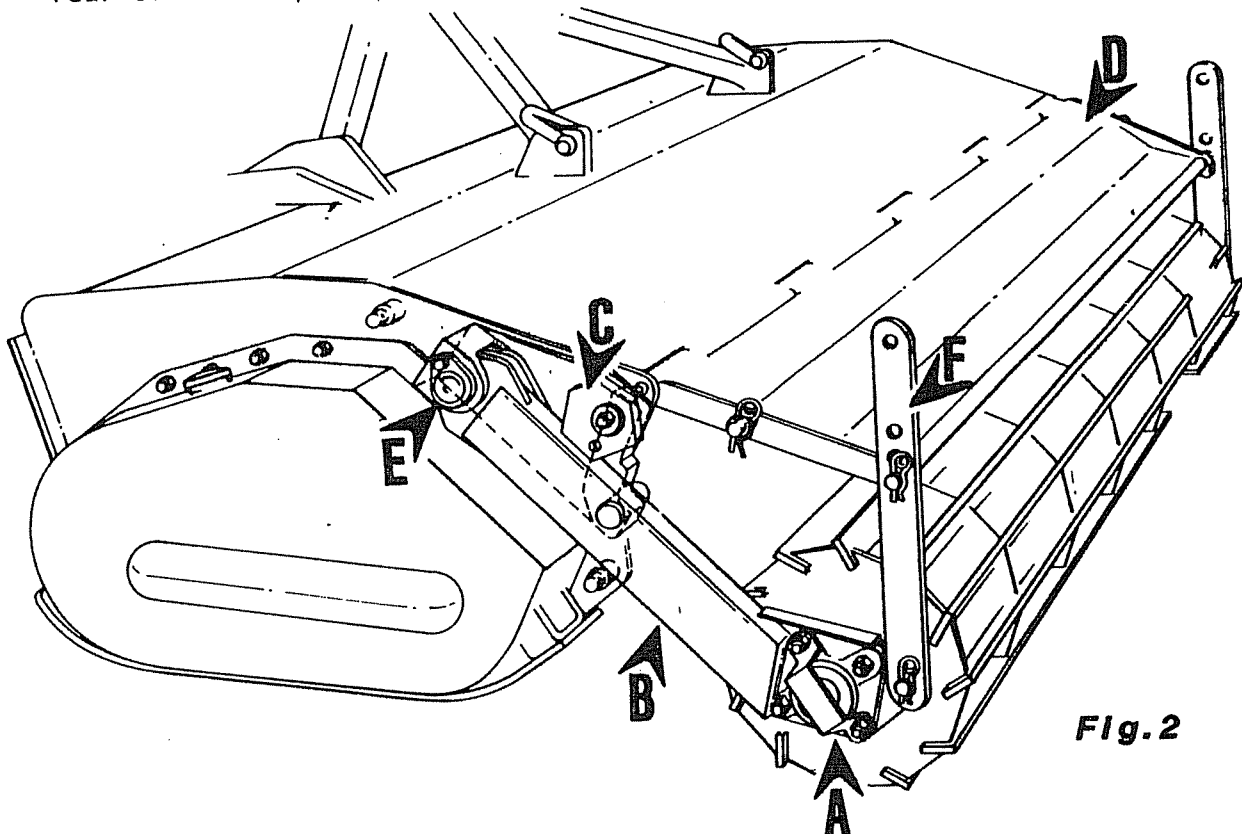
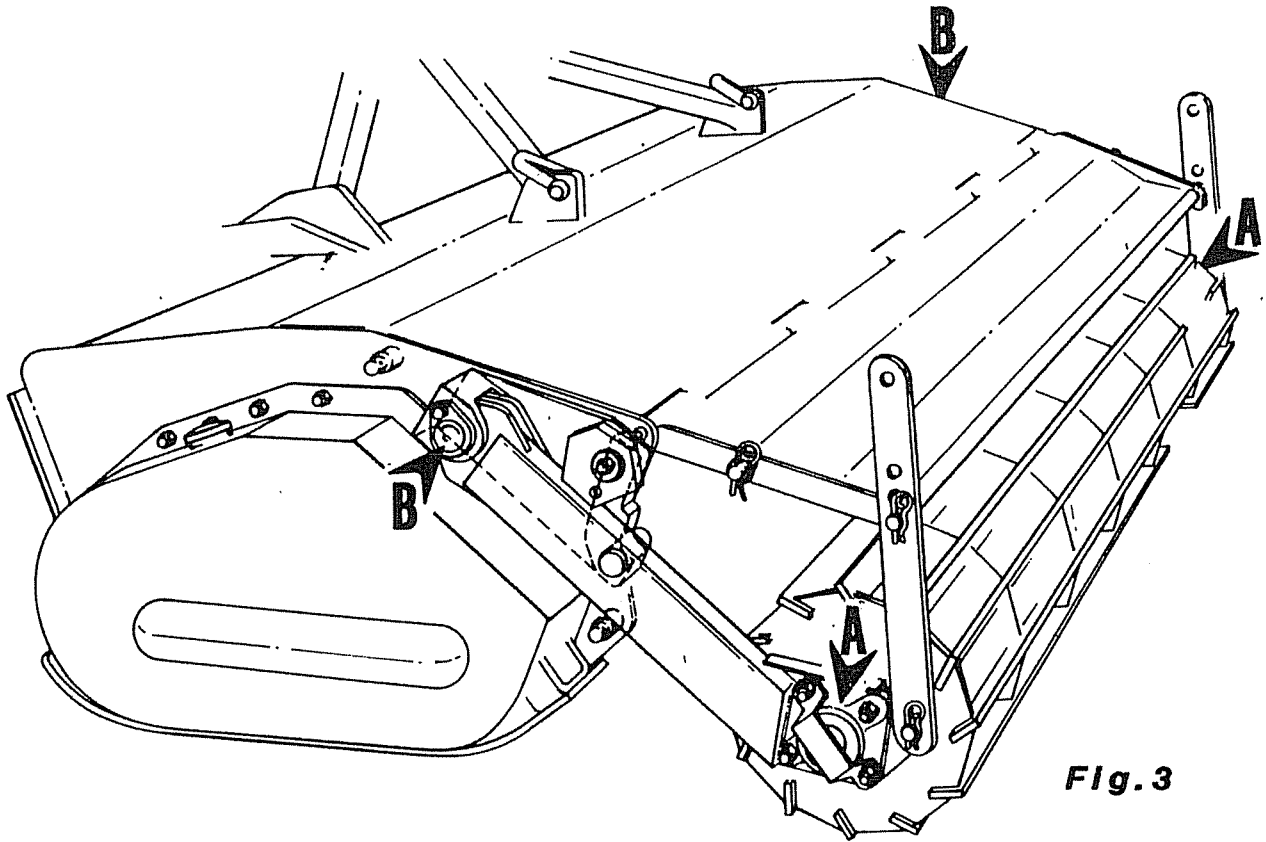


Fig. 2

### 3. LUBRICATION AND OIL REQUIREMENTS

---

1. Grease the following daily:
  - a. Crumbler roller, 2 nipples. A
  - b. Crumbler trailing, arms 2 nipples. B
2. One or two gentle pumps each day before work are sufficient.
3. Violent pumping or high pressure pumping of grease can damage bearing seals and in some cases cause displacement of the bearing cage and subsequent failure



**Fig. 3**

## 4. CRUMBLER OPERATING INSTRUCTIONS

### a. DEPTH ADJUSTMENT.

The crumbler may be used to control the depth of the Dyna Drive. In this way weight is transferred from the Dyna Drive to the crumbler for extra breaking down of the soil surface.

The depth is set by the depth adjustment plates.

The faces are numbered 1-6, giving a range of adjustment from the shallowest cultivation at No.1 (1/2" approx) the deepest cultivation at No. 6 (5 1/2" approx). The plate should be bearing on the trailing arm when at work (fig 2 C ). Ensure that both adjustment plates are set to the same position.

### b. HINGED FLAP ADJUSTMENT.

When working with the crumbler in stony conditions it may be necessary to adjust the hinged flap upwards to prevent stones wedging between the flap and crumbler bars,(fig 2 F).

### c. HOLDING THE CRUMBLER OUT OF WORK. (fig 4).

If desired the Dyna Drive may be used without the crumbler. As it is not necessary to remove the crumbler from the machine the crumbler can be held in its raised position. However while in this state the hinged flap cannot be used, so care must be taken of material ejected from the rear rotor.

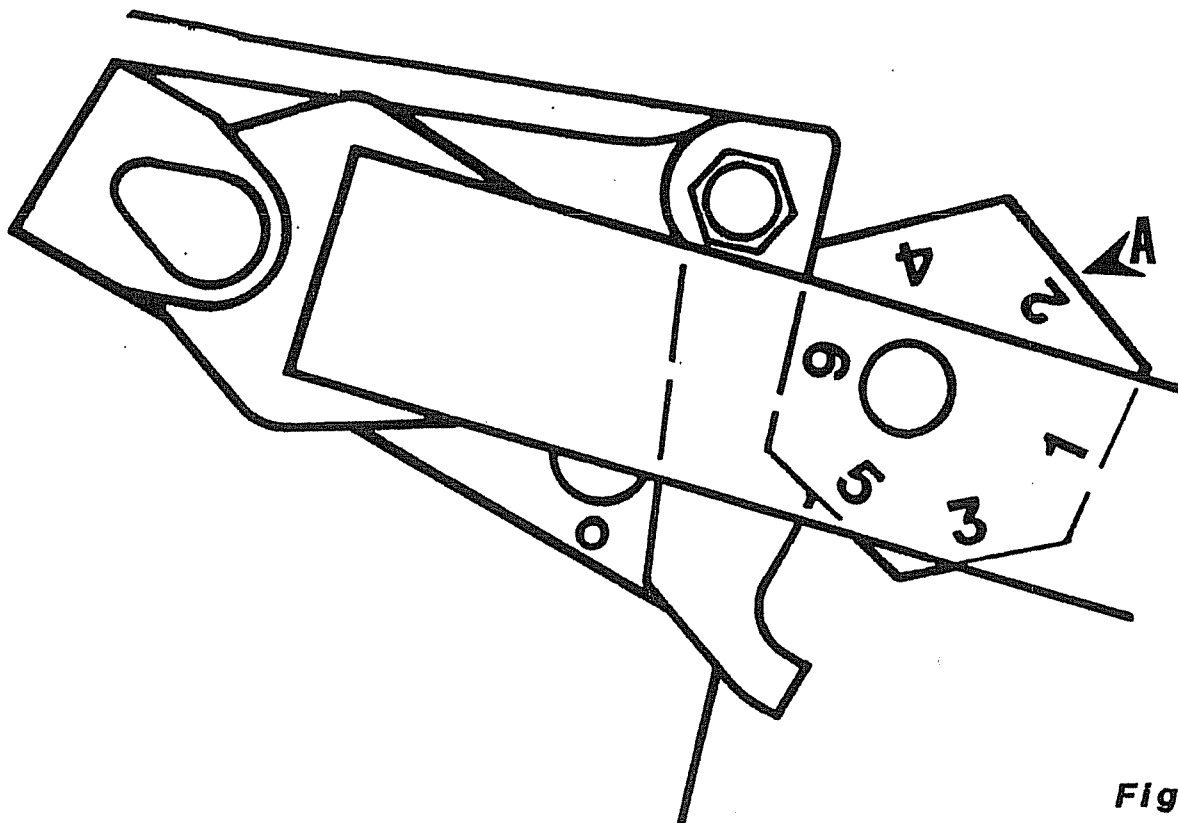


Fig. 4

### d. CRUMBLER IN RAISED POSITION.

1. Take off left and right hand depth adjustment plates (fig 4A).



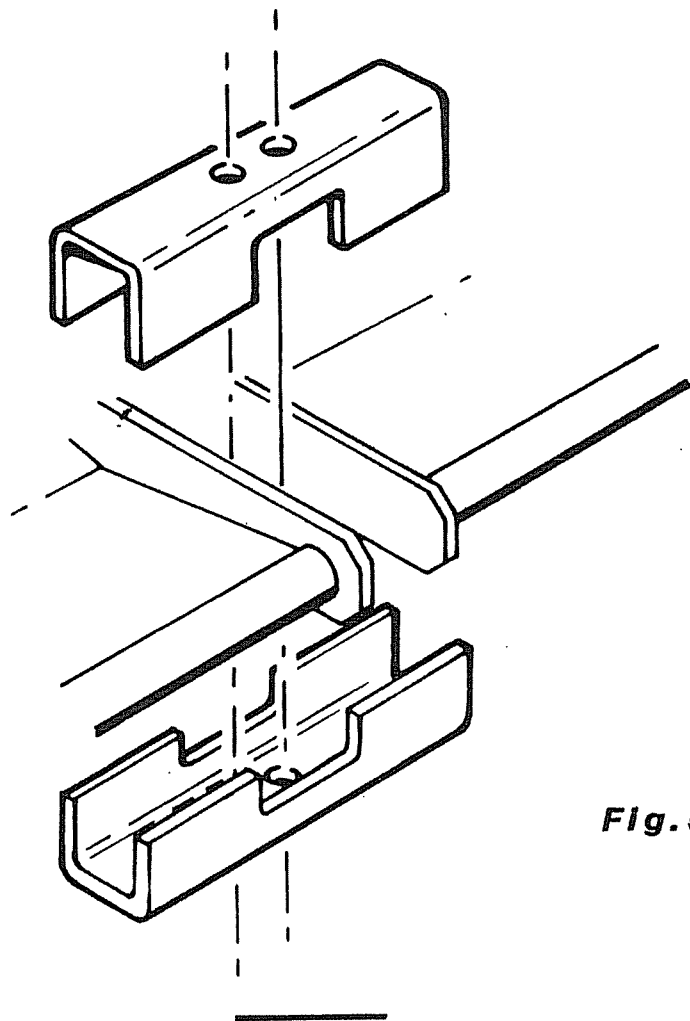
#### 4. CRUMBLER OPERATING INSTRUCTIONS

2. Raise the crumbler to a height of approximately 230mm (9") from its lowest position, either on blocks or in a secure way.
3. Position the depth adjustment plates on the spigot (trailing arms stop) on the inside of the trailing arms, (fig 2 G and 4 B). Decals facing outwards with position no.6 against the rear edge of the end plates, (see fig 4) Secure with setscrews and large flat washers

**IMPORTANT:** Great care must be taken when raising the crumbler and when fitting the depth adjustment plates. Make sure the crumbler is securely raised.

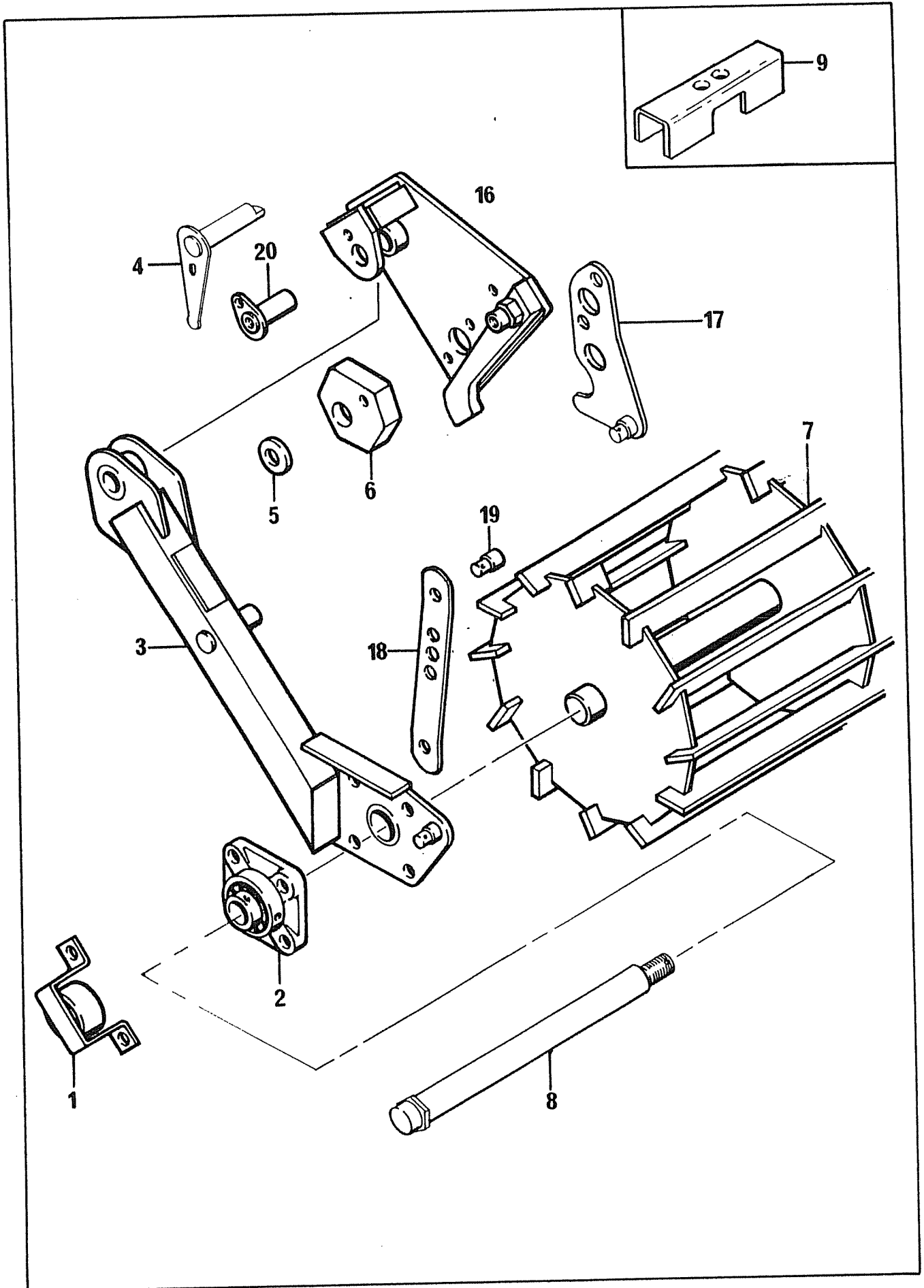
4. Lower crumbler so that it is held in its raised position by the depth adjustment plates alone. When removing the depth adjustment plates to replace them to their working positions, take care to ensure that the crumbler is adequately supported, either on blocks or in a secure position.

**NOTE:**(5.0M machines only). If crumbler should be removed from machine, remember to take off clamp brackets (fig 5) and connect hinged flaps to machine with flap links.



**Fig. 5**

CRUMBLER AND MOUNTING BRACKETS (ALL MODELS)



71.356.03

**CRUMBLER 2.4M**

| REF | PART NO.  | DESCRIPTION                    | QTY | SERIAL NO.<br>FROM - TO |
|-----|-----------|--------------------------------|-----|-------------------------|
|     | 92.150.71 | CRUMBLER 2.4M comprising:      |     |                         |
| *01 | 03.831.01 | GUARD-BEARING                  | 2   |                         |
| 01  | 05.264.25 | SETSCREW M12 X 40MM PLATED     | 4   |                         |
| *02 | 03.008.01 | BEARING ASSY - FLANGED 40 BORE | 2   |                         |
| 02  | 05.264.24 | SETSCREW M12 X 35MM PLATED     | 4   |                         |
| 02  | 05.287.03 | SELF-LOCKING NUT M12 PLATED    | 8   |                         |
| 03  | 03.785.01 | DECAL-GREASE                   | 2   |                         |
| 03  | 05.953.03 | GREASE NIPPLE M10              | 2   |                         |
| *03 | 06.017.01 | ARM-TRAILING LH                | 1   |                         |
| 03  | 06.017.02 | ARM-TRAILING RH                | 1   |                         |
| *04 | 03.654.13 | PIN - 30 DIA X 98              | 2   |                         |
| 04  | 05.264.11 | SETSCREW M10 X 20MM PLATED     | 2   |                         |
| 04  | 05.282.02 | SPRING WASHER 10MM PLATED      | 2   |                         |
| *07 | 04.413.02 | CRUMBLER - 400DIA X 2200MM     | 1   |                         |
| *08 | 03.656.13 | PIN - 40 DIA X 556             | 2   |                         |
| 08  | 05.281.07 | FLAT WASHER 30MM               | 2   |                         |
| 08  | 05.284.27 | SPLIT COTTER 6.3MM X 63MM      | 2   |                         |
| 08  | 05.948.10 | NUT-SLOTTED M30                | 2   |                         |

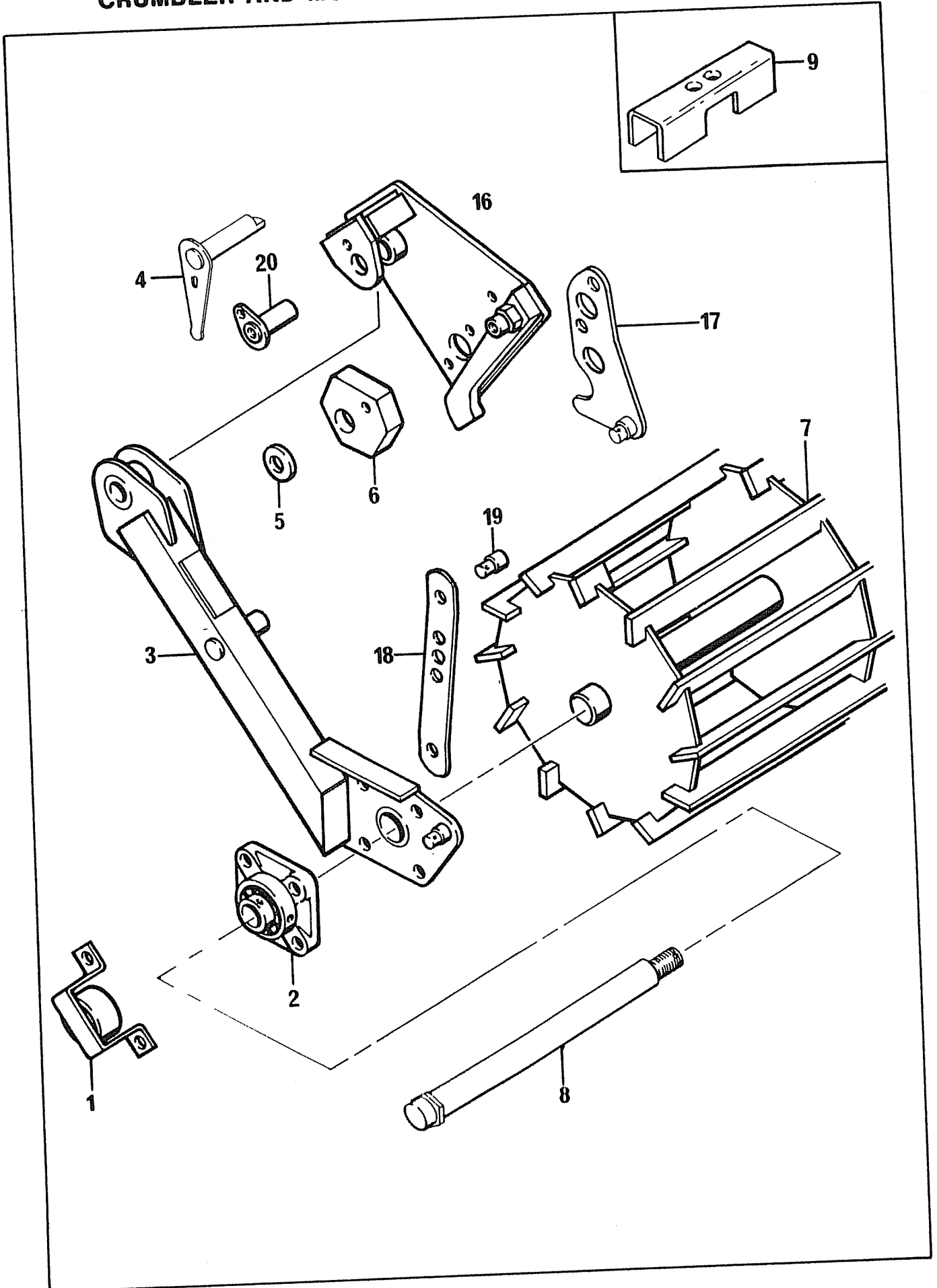
71.357.03

**CRUMBLER 3.0M**

| REF | PART NO.  | DESCRIPTION                    | QTY | SERIAL NO.<br>FROM - TO |
|-----|-----------|--------------------------------|-----|-------------------------|
|     | 92.150.72 | CRUMBLER 3.0M comprising:      |     |                         |
| *01 | 03.831.01 | GUARD-BEARING                  | 2   |                         |
| 01  | 05.264.25 | SETSCREW M12 X 40MM PLATED     | 4   |                         |
| *02 | 03.008.01 | BEARING ASSY - FLANGED 40 BORE | 2   |                         |
| 02  | 05.264.24 | SETSCREW M12 X 35MM PLATED     | 4   |                         |
| 02  | 05.287.03 | SELF-LOCKING NUT M12 PLATED    | 8   |                         |
| 03  | 03.785.01 | DECAL-GREASE                   | 2   |                         |
| 03  | 05.953.03 | GREASE NIPPLE M10              | 2   |                         |
| *03 | 06.017.01 | ARM-TRAILING LH                | 1   |                         |
| 03  | 06.017.02 | ARM-TRAILING RH                | 1   |                         |
| *04 | 03.654.13 | PIN - 30 DIA X 98              | 2   |                         |
| 04  | 05.264.11 | SETSCREW M10 X 20MM PLATED     | 2   |                         |
| 04  | 05.282.02 | SPRING WASHER 10MM PLATED      | 2   |                         |
| *07 | 04.370.02 | CRUMBLER - 400DIA X 2800MM     | 1   |                         |
| *08 | 03.656.13 | PIN - 40 DIA X 556             | 2   |                         |
| 08  | 05.281.07 | FLAT WASHER 30MM               | 2   |                         |
| 08  | 05.284.27 | SPLIT COTTER 6.3MM X 63MM      | 2   |                         |
| 08  | 05.948.10 | NUT-SLOTTED M30                | 2   |                         |

\* MAIN PART IN GROUP, RELATED PARTS HAVE SAME REFERENCE NUMBER

# CRUMBLER AND MOUNTING BRACKETS (ALL MODELS)



71.083.02

**CRUMBLER 3.4M**

| REF | PART NO.  | DESCRIPTION                    | QTY | SERIAL NO.<br>FROM - TO |
|-----|-----------|--------------------------------|-----|-------------------------|
|     | 92.150.75 | CRUMBLER 3.4M comprising:      |     |                         |
| *01 | 03.831.01 | GUARD-BEARING                  | 2   |                         |
| 01  | 05.264.25 | SETSCREW M12 X 40MM PLATED     | 4   |                         |
| *02 | 03.008.01 | BEARING ASSY - FLANGED 40 BORE | 2   |                         |
| 02  | 05.264.24 | SETSCREW M12 X 35MM PLATED     | 4   |                         |
| 02  | 05.287.03 | SELF-LOCKING NUT M12 PLATED    | 8   |                         |
| 03  | 03.785.01 | DECAL-GREASE                   | 2   |                         |
| 03  | 05.953.03 | GREASE NIPPLE M10              | 2   |                         |
| *03 | 06.017.01 | ARM-TRAILING LH                | 1   |                         |
| 03  | 06.017.02 | ARM-TRAILING RH                | 1   |                         |
| *04 | 03.654.13 | PIN - 30 DIA X 98              | 2   |                         |
| 04  | 05.264.11 | SETSCREW M10 X 20MM PLATED     | 2   |                         |
| 04  | 05.282.02 | SPRING WASHER 10MM PLATED      | 2   |                         |
| *07 | 06.437.01 | CRUMBLER 400 DIA X 3200MM      | 1   |                         |
| *08 | 03.656.13 | PIN - 40 DIA X 556             | 2   |                         |
| 08  | 05.281.07 | FLAT WASHER 30MM               | 2   |                         |
| 08  | 05.284.27 | SPLIT COTTER 6.3MM X 63MM      | 2   |                         |
| 08  | 05.948.10 | NUT-SLOTTED M30                | 2   |                         |

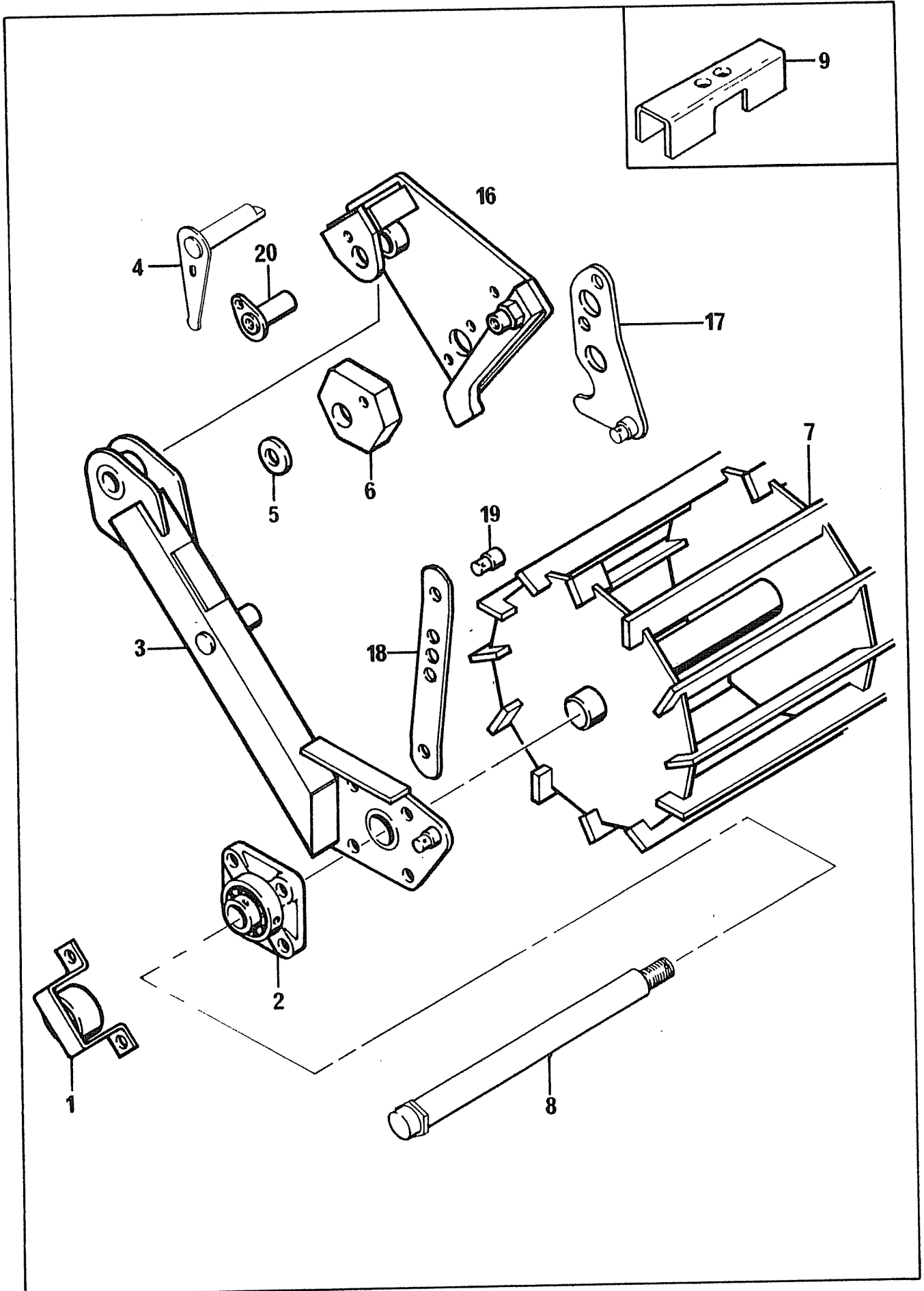
71.358.03

**CRUMBLER 3.8M**

| REF | PART NO.  | DESCRIPTION                    | QTY | SERIAL NO.<br>FROM - TO |
|-----|-----------|--------------------------------|-----|-------------------------|
|     | 92.150.03 | CRUMBLER 3.8M comprising:      |     |                         |
| *01 | 03.831.01 | GUARD-BEARING                  | 2   |                         |
| 01  | 05.264.25 | SETSCREW M12 X 40MM PLATED     | 4   |                         |
| *02 | 03.008.01 | BEARING ASSY - FLANGED 40 BORE | 2   |                         |
| 02  | 05.264.24 | SETSCREW M12 X 35MM PLATED     | 4   |                         |
| 02  | 05.287.03 | SELF-LOCKING NUT M12 PLATED    | 8   |                         |
| 03  | 03.785.01 | DECAL-GREASE                   | 2   |                         |
| 03  | 05.953.03 | GREASE NIPPLE M10              | 2   |                         |
| *03 | 06.017.01 | ARM-TRAILING LH                | 1   |                         |
| 03  | 06.017.02 | ARM-TRAILING RH                | 1   |                         |
| *04 | 03.654.13 | PIN - 30 DIA X 98              | 2   |                         |
| 04  | 05.264.11 | SETSCREW M10 X 20MM PLATED     | 2   |                         |
| 04  | 05.282.02 | SPRING WASHER 10MM PLATED      | 2   |                         |
| *07 | 06.015.02 | CRUMBLER 400DIA X 3600MM       | 1   |                         |
| *08 | 03.656.13 | PIN - 40 DIA X 556             | 2   |                         |
| 08  | 05.281.07 | FLAT WASHER 30MM               | 2   |                         |
| 08  | 05.284.27 | SPLIT COTTER 6.3MM X 63MM      | 2   |                         |
| 08  | 05.948.10 | NUT-SLOTTED M30                | 2   |                         |

\* MAIN PART IN GROUP, RELATED PARTS HAVE SAME REFERENCE NUMBER

CRUMBLER AND MOUNTING BRACKETS (ALL MODELS)



71.472.01

**CRUMBLER 4.4M**

| REF | PART NO.  | DESCRIPTION                  | QTY | SERIAL NO.<br>FROM - TO |
|-----|-----------|------------------------------|-----|-------------------------|
|     | 92.150.76 | CRUMBLER 4.4M comprising:    |     |                         |
| *01 | 06.057.01 | GUARD - BEARING 50MM         | 2   |                         |
| *02 | 03.138.01 | BEARING ASSY-FLANGED 50 BORE | 2   |                         |
| 02  | 05.264.37 | SETSCREW M16 X 50MM PLATED   | 8   |                         |
| 02  | 05.287.04 | SELF-LOCKING NUT M16 PLATED  | 8   |                         |
| 03  | 03.785.01 | DECAL-GREASE                 | 2   |                         |
| *03 | 04.461.03 | ARM-TRAILING LH              | 1   |                         |
| 03  | 04.461.04 | ARM-TRAILING RH              | 1   |                         |
| 03  | 05.953.03 | GREASE NIPPLE M10            | 2   |                         |
| *04 | 03.654.13 | PIN - 30 DIA X 98            | 2   |                         |
| 04  | 05.264.11 | SETSCREW M10 X 20MM PLATED   | 2   |                         |
| 04  | 05.282.02 | SPRING WASHER 10MM PLATED    | 2   |                         |
| *07 | 06.561.01 | CRUMBLER 400 DIA X 4.2M      | 1   |                         |
| *08 | 03.657.05 | PIN 50 DIA X 550             | 2   |                         |
| 08  | 05.281.07 | FLAT WASHER 30MM             | 2   |                         |
| 08  | 05.284.27 | SPLIT COTTER 6.3MM X 63MM    | 2   |                         |
| 08  | 05.948.10 | NUT-SLOTTED M30              | 2   |                         |

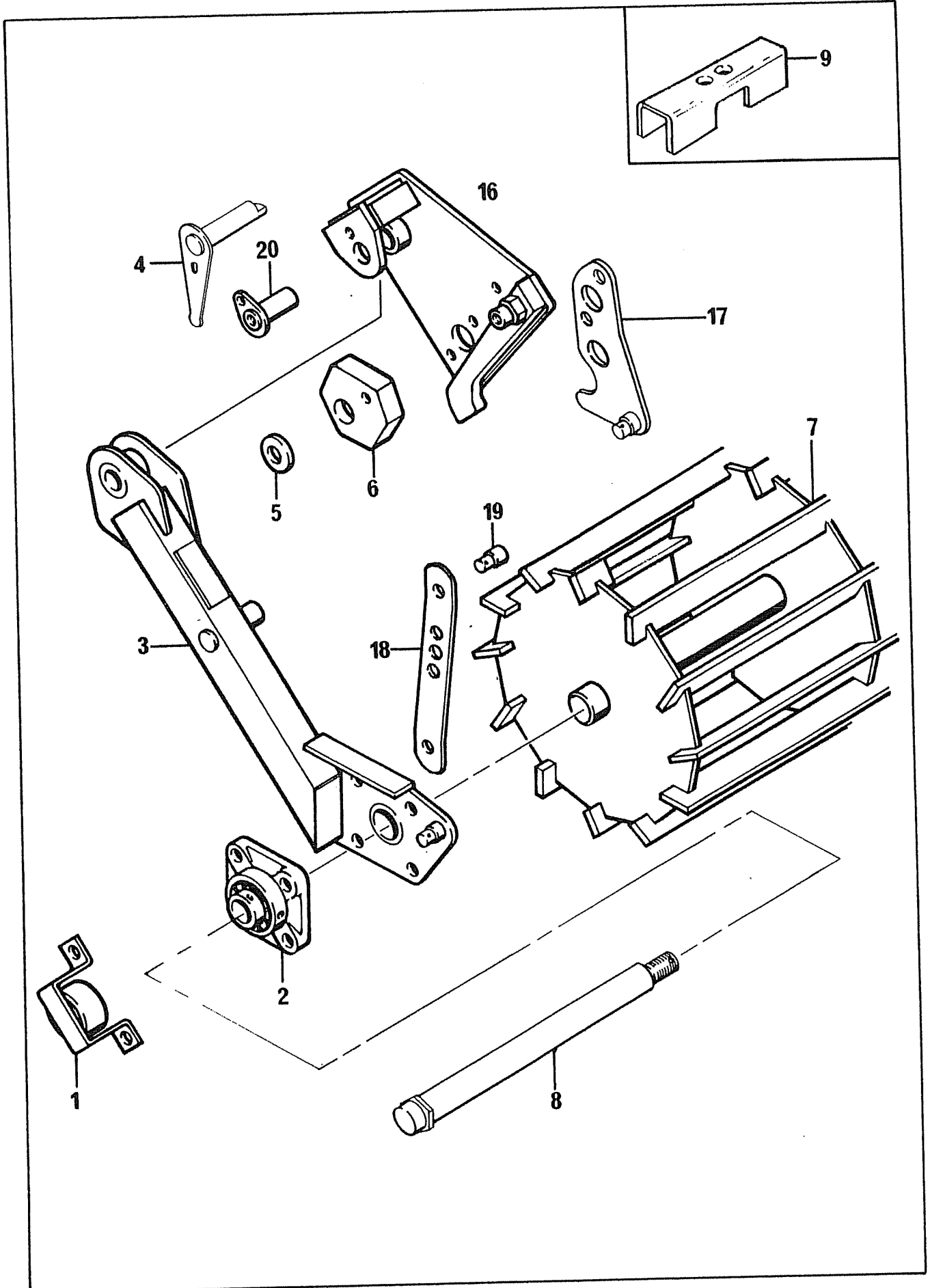
71.359.03

**CRUMBLER 5.0M**

| REF | PART NO.  | DESCRIPTION                  | QTY | SERIAL NO.<br>FROM - TO |
|-----|-----------|------------------------------|-----|-------------------------|
|     | 92.150.74 | CRUMBLER 5.0M comprising:    |     |                         |
| *01 | 06.057.01 | GUARD - BEARING 50MM         | 2   |                         |
| *02 | 03.138.01 | BEARING ASSY-FLANGED 50 BORE | 2   |                         |
| 02  | 05.264.37 | SETSCREW M16 X 50MM PLATED   | 8   |                         |
| 02  | 05.287.04 | SELF-LOCKING NUT M16 PLATED  | 8   |                         |
| 03  | 03.785.01 | DECAL-GREASE                 | 2   |                         |
| *03 | 04.461.03 | ARM-TRAILING LH              | 1   |                         |
| 03  | 04.461.04 | ARM-TRAILING RH              | 1   |                         |
| 03  | 05.953.03 | GREASE NIPPLE M10            | 2   |                         |
| *04 | 03.654.13 | PIN - 30 DIA X 98            | 2   |                         |
| 04  | 05.264.11 | SETSCREW M10 X 20MM PLATED   | 2   |                         |
| 04  | 05.282.02 | SPRING WASHER 10MM PLATED    | 2   |                         |
| *07 | 04.462.02 | CRUMBLER 400 DIA X 4800mm    | 1   |                         |
| *08 | 03.657.05 | PIN 50 DIA X 550             | 2   |                         |
| 08  | 05.281.07 | FLAT WASHER 30MM             | 2   |                         |
| 08  | 05.284.27 | SPLIT COTTER 6.3MM X 63MM    | 2   |                         |
| 08  | 05.948.10 | NUT-SLOTTED M30              | 2   |                         |
| *09 | 04.463.04 | BRACKET-CLAMP                | 1   |                         |
| 09  | 05.287.03 | SELF-LOCKING NUT M12 PLATED  | 2   |                         |
| 09  | 05.292.26 | BOLT M12 X 130MM PLATED      | 2   |                         |
| 09  | 06.409.01 | BRACKET-CLAMP LOWER          | 1   |                         |

\*MAIN PART IN GROUP, RELATED PARTS HAVE SAME REFERENCE NUMBER

### CRUMBLER AND MOUNTING BRACKETS (ALL MODELS)





## 71.355.02 DYNA - DRIVE CRUMBLER MOUNTING BRACKET KIT

| REF | PART NO.  | DESCRIPTION                      | QTY | SERIAL NO.<br>FROM - TO |
|-----|-----------|----------------------------------|-----|-------------------------|
|     | 92.150.11 | MOUNTING BRACKET KIT comprising: |     |                         |
| *05 | 05.234.01 | WASHER 1.3/4" X 17/32" X 3/16"   | 2   |                         |
| 06  | 04.433.01 | DECAL-CRUMBLER ADJUSTMENT L.H.   | 1   |                         |
| 06  | 04.433.02 | DECAL-CRUMBLER ADJUSTMENT R.H.   | 1   |                         |
| 06  | 05.264.21 | SETSCREW M12 X 20MM PLATED       | 2   |                         |
| 06  | 05.282.03 | SPRING WASHER 12MM PLATED        | 2   |                         |
| *06 | 06.013.01 | PLATE-DEPTH ADJUST. LH           | 1   |                         |
| 06  | 06.013.02 | PLATE-DEPTH ADJUST. RH           | 1   |                         |
| 16  | 05.264.23 | SETSCREW M12 X 30MM PLATED       | 10  |                         |
| 16  | 05.282.03 | SPRING WASHER 12MM PLATED        | 10  |                         |
| 16  | 05.287.03 | SELF-LOCKING NUT M12 PLATED      | 10  |                         |
| *16 | 06.014.01 | BRACKET-CRUMBLE MTG. LH          | 1   |                         |
| 16  | 06.014.02 | BRACKET-CRUMBLE MTG. RH          | 1   |                         |
| 17  | 05.264.24 | SETSCREW M12 X 35MM PLATED       | 4   |                         |
| 17  | 05.282.03 | SPRING WASHER 12MM PLATED        | 4   |                         |
| 17  | 05.287.03 | SELF-LOCKING NUT M12 PLATED      | 4   |                         |
| *17 | 06.246.01 | BRACKET-LINK PIN MOUNTING LH     | 1   |                         |
| 17  | 06.246.02 | BRACKET - LINK PIN MOUNTING RH   | 1   |                         |
| 18  | 03.255.05 | CHAIN-RING ASSY                  | 2   |                         |
| 18  | 05.964.01 | SPRING COTTER 3.6MM DIA          | 2   |                         |
| *18 | 06.012.02 | LINK - FLAP ADJUSTMENT           | 2   |                         |
| 19  | 03.255.05 | CHAIN-RING ASSY                  | 2   |                         |
| 19  | 05.964.01 | SPRING COTTER 3.6MM DIA          | 2   |                         |
| *19 | 06.259.01 | PIN-20DIA X 44 (WELD ON)         | 4   |                         |
| 19  | 06.260.01 | PIN-20DIA X 74 (WELD ON)         | 2   |                         |
| *20 | 02.839.01 | PIN 30 DIA X 76MM                | -   |                         |
| 20  | 05.281.02 | FLAT WASHER 10MM PLATED          | -   |                         |
| 20  | 05.953.03 | GREASE NIPPLE M10                | -   |                         |

\* MAIN PART IN GROUP, RELATED PARTS HAVE SAME REFERENCE NUMBER