

PM 1901

# ***1107MW CUTTING HEAD***

PARTS MANUAL

ISSUE 3

## IMPORTANT

NOTE HERE THE SERIAL NUMBER OF YOUR MACHINE AND ALWAYS QUOTE IT IN ANY COMMUNICATION WITH US OR YOUR DEALER. THIS IS PARTICULARLY IMPORTANT WHEN ORDERING SPARES. REMEMBER TO INCLUDE ALL NUMBERS AND LETTERS.

MACHINE SERIAL NUMBERS \_\_\_\_\_

THE INFORMATION GIVEN THROUGHOUT THIS MANUAL IS CORRECT AT THE TIME OF PUBLICATION. HOWEVER, IN THE COURSE OF CONSTANT DEVELOPMENT OF BOMFORD TURNER MACHINES, CHANGES IN SPECIFICATION ARE INEVITABLE. SHOULD YOU FIND THE INFORMATION GIVEN IN THIS BOOK TO BE AT VARIANCE WITH THE MACHINE IN YOUR POSSESSION, YOU ARE ADVISED TO CONTACT THE BOMFORD TURNER SERVICE DEPARTMENT WHERE UP-TO-DATE INFORMATION WILL BE PROVIDED.

THE MANUAL CAN CONTAIN STANDARD AND OPTIONAL FEATURES AND IS NOT TO BE USED AS A MACHINE SPECIFICATION.

THE MACHINE HAS BEEN TESTED AND IS CONSIDERED SAFE IF CAREFULLY USED. ENSURE YOUR OPERATOR IS PROPERLY TRAINED IN ITS USE AND MAINTENANCE.

---

## IMPORTANT

NOTEZ ICI LES NUMEROS DE SERIE DE VOTRE MACHINE ET MENTIONNEZ LES DANS TOUTE COMMUNICATION AVEC NOS SERVICES OU VOTRE REVENDEUR. CECI EST IMPORTANT POUR LA COMMANDE DE PIECES DETACHEES. PENSEZ A NOTER TOUS LES NUMEROS ET TOUTES LES LETTERS.

NUMEROS DE SERIE DE LA MACHINE \_\_\_\_\_

LES INFORMATIONS DONNEES DANS CE MANUEL SONT CORRECTES CEPENDANT, DU FAIT DE DEVELOPPEMENT CONSTANT DES MACHINES BOMFORD TURNER.

CHANGEMENTS DANS LES CARACTERISTIQUES SONT INEVITABLES.

SI VOUS TROUVEZ QUE LES INFORMATIONS DONNEES NE CORRESPONDENT PAS A VOTRE MACHINE VEUILLEZ CONTACTER LE SERVICE DES REPARATIONS OU DES INFORMATIONS PLUS RECENTES VOUS SERONT DONNEES.

CE MANUEL PEUT MONTRER DES CARACTERISTIQUES OPTIONNELLES ET NE PEUT PAS ETRE CONSIDERE COMME SPECIFICATION DE LA MACHINE.

CETTE MACHINE A ETE TESTEE, ET ELLE EST CONSIDEREE COMME FIABLE A CONDITION D'UNE BONNE UTILISATION. ASSUREZ-VOUS QUE VOTRE OPERATEUR EST QUALIFIE EN CE QUI CONCERNE L'UTILISATION DE LA MACHINE AINSI QUE SON ENTRETIEN.

---

## WICHTIG

TRAGEN SIE HIER DIE SERIENNUMMERN IHRER MASCHINE EIN UND GEBEN SIE DIESE IMMER AN, WENN SIE SICH AN UNS ODER IHREN HÄNDLER WENDEN. DAS IST BESONDERS BEI ERSATZTEILBESTELLUNGEN WICHTIG. VERGESSEN SIE NICHT, ALLE ZAHLEN UND BUCHSTABEN ZU NOTIEREN.

SERIENNUMMERN DER MASCHINE \_\_\_\_\_

DIE ANGABEN IN DIESEM HANDBUCH SIND BEI VERÖFFENTLICHUNG KORREKT. AUFGRUND DER KONSTANTEN WEITERENTWICKLUNG VON BOMFORD TURNER MASCHINEN SIND JEDOCH ÄNDERUNGEN IN DER SPEZIFIKATION UNVERMEIDLICH. WENN DIE INFORMATION IN DIESEM HANDBUCH NICHT MIT IHRER MASCHINE ÜBEREINSTIMMT, NEHMEN SIE BITTE KONTAKT MIT DER BOMFORD TURNER KUNDENDIENSTABTEILUNG AUF, DIE IHNEN GERNE DIE AKTUELLEN INFORMATION ZUKOMMEN LÄSST.

DAS HANDBUCH KANN SOWOHL BESCHREIBUNGEN FÜR DIE STANDARD AUSFÜHRUNG ALS AUCH FÜR ZUBEHÖR ENTHALTEN UND IST NICHT ALS MASCHINENSPEZIFIKATION ZU VERWENDET.

DIE MASCHINE IST GETESTET UND BEI SACHGEMÄSSEM BETRIEB ALS SICHER BEFUNDEN WORDEN. SORGEN SIE DAFÜR, DASS IHR BEDIENPERSONAL IN ANWENDUNG UND WARTUNG RICHTIG GESCHULT WIRD.

## **1107MW - PARTS MANUAL**

*PAGE AND ILLUSTRATION NUMBERS SHOWN ARE USED ONLY FOR REFERENCE PURPOSES AND SHOULD NOT BE USED FOR ORDERING SPARE PARTS*

*PLEASE ENSURE THAT THE CORRECT PART NUMBER AND DESCRIPTION IS GIVEN WHEN ORDERING PARTS TOGETHER WITH THE SERIAL NUMBER OF THE HEAD.*

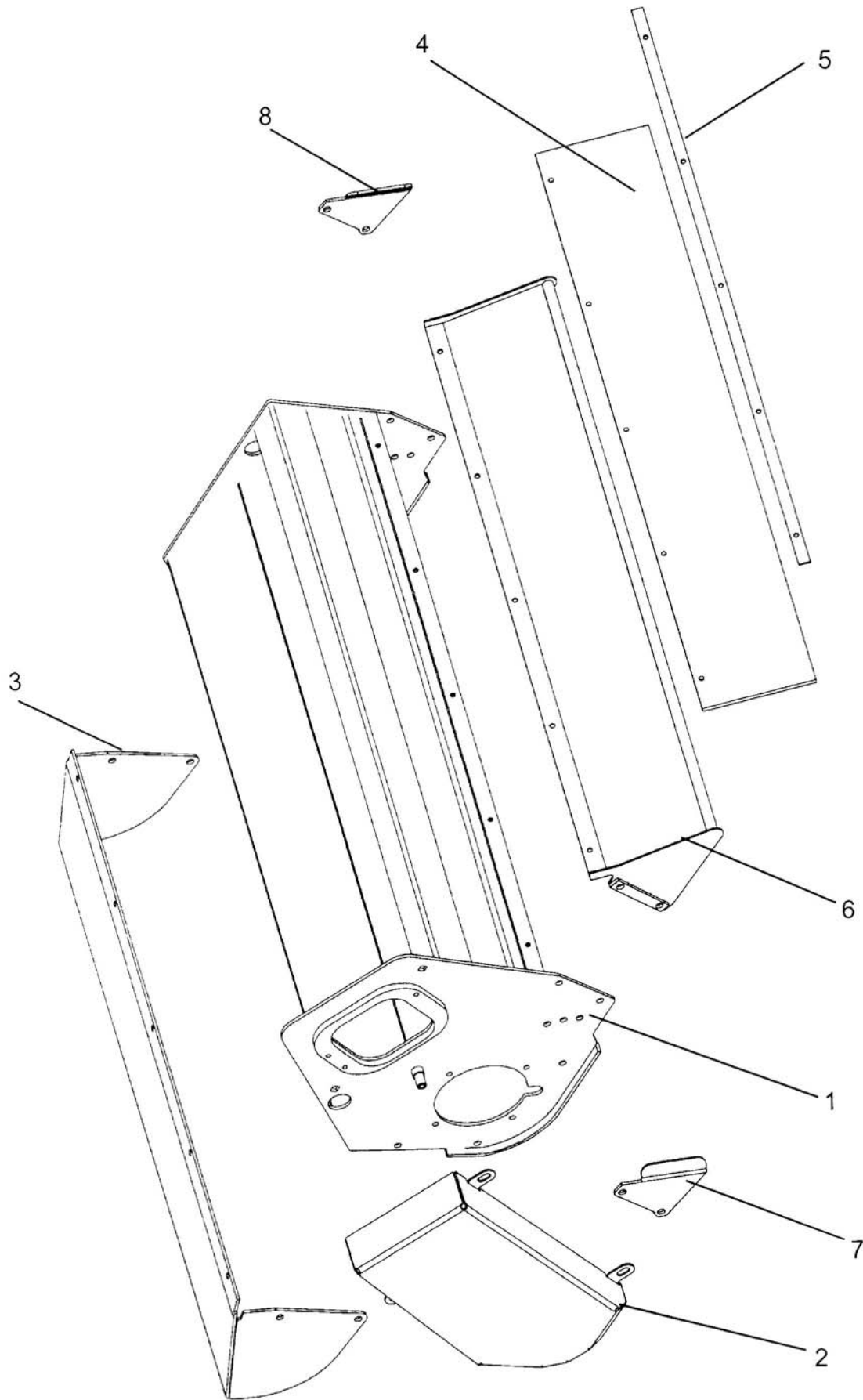
<b>Page No.</b>	<b>Section</b>
2 – 1 to 2 – 2	COWL ASSEMBLY
3 – 1 to 3 – 2	ROLLER ASSEMBLY
4 – 1 to 4 – 2	MOTOR ASSEMBLY
5 – 1 to 5 – 2	BEARING ASSEMBLY
6 – 1 to 6 – 2	ROTOR SHAFT ASSEMBLIES
7 – 1 to 7 – 2	DECALS

### **IMPORTANT**

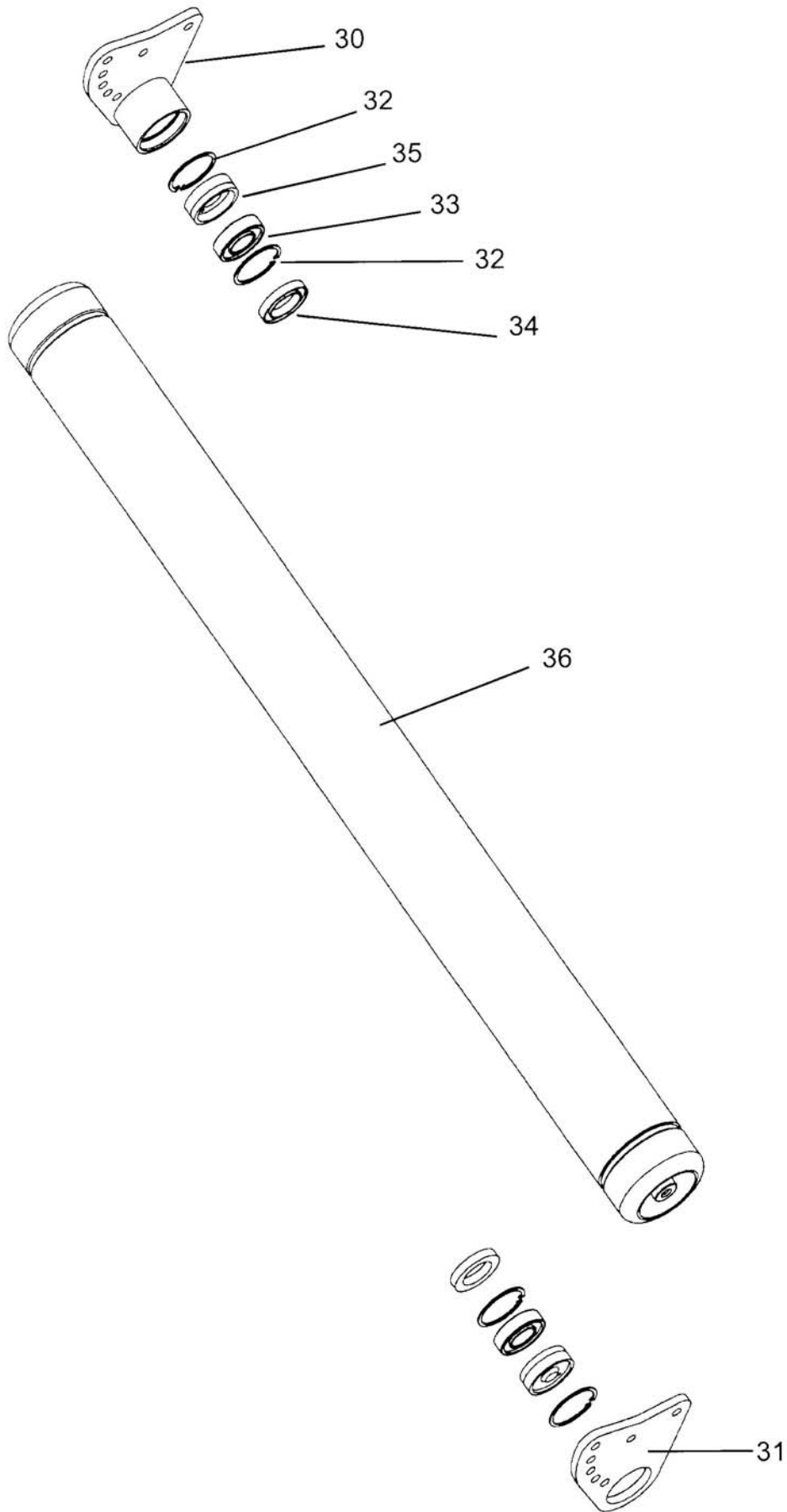
**THIS MACHINE IS DESIGNED FOR VEGETATION CONTROL  
AND MUST NOT BE USED FOR ANY OTHER PURPOSE**

**IT IS POTENTIALLY HAZARDOUS TO FIT OR USE  
ANY PARTS OTHER THAN GENUINE BOMFORD TURNER PARTS**

**THE COMPANY DISCLAIMS ALL LIABILITY FOR THE  
CONSEQUENCES OF SUCH USE WHICH, IN ADDITION,  
VOIDS THE MACHINE WARRANTY**



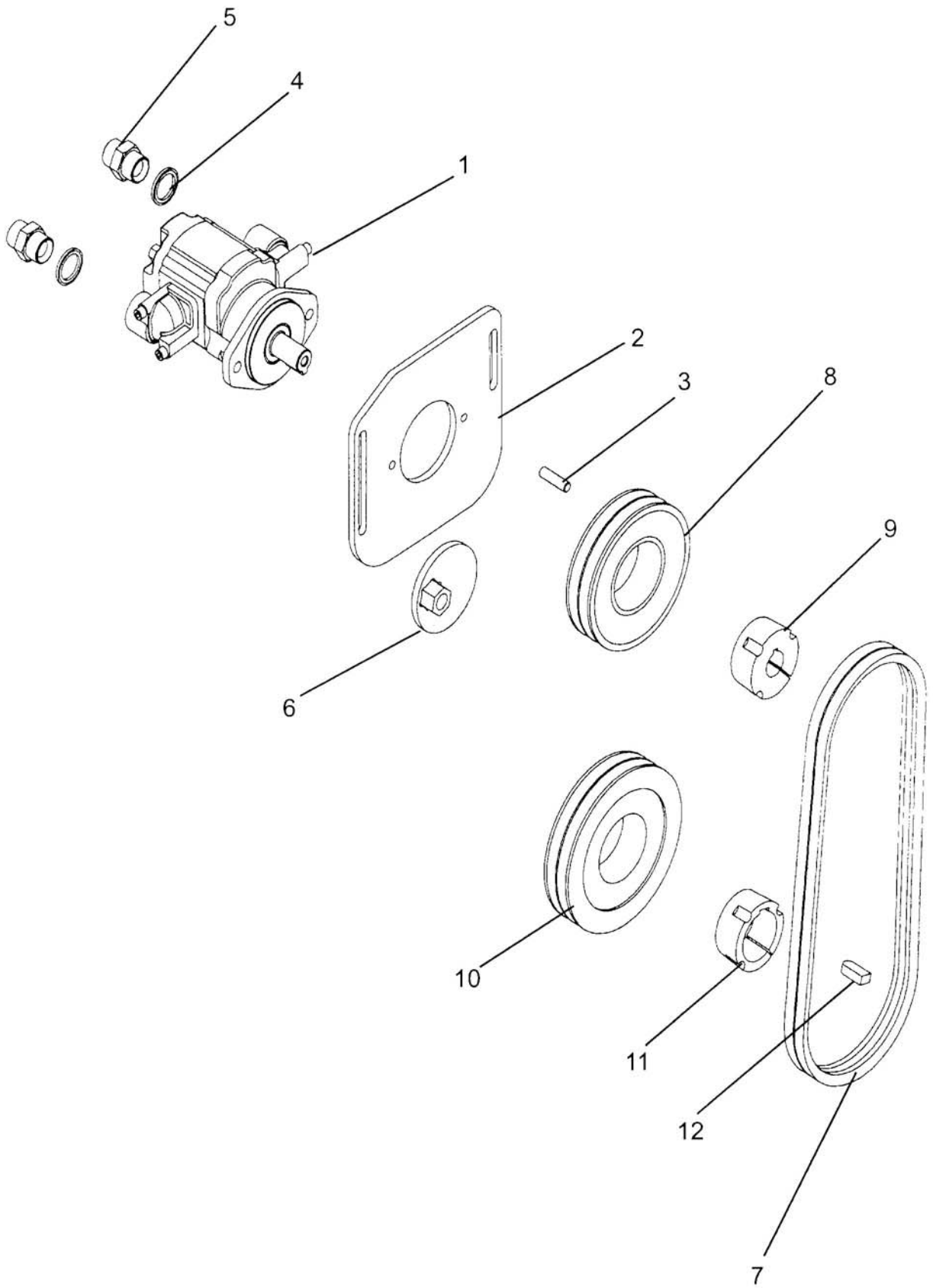
REF	PART NO	DESCRIPTION	QTY
71.020.03 COWL ASSEMBLY FRONT 1107MW9315			
01	05.227.01	HAMMER DRIVE SCREW NO.6X3/8"	2
01	05.264.11	SETSCREW M10 X 20MM PLATED	1
01	05.264.13	SETSCREW M10 X 30MM PLATED	3
01	05.281.02	FLT WASHER 10MM PLATED FORM C	4
01	05.282.02	SPRING WASHER 10MM PLATED	4
01	05.774.07	SERIAL NO. PLATE BOMFORDTURNER	1
01	46642.01	COWL - 1100 LH	1
02	05.281.03	FLAT WASHER 12MM PLATED	2
02	05.287.03	SELF-LOCKING NUT M12 PLATED	2
02	05.839.27	BOLT CUP SQ M12 X 25 (PLATED)	2
02	46643.01	GUARD - DRIVE LH	1
03	05.264.12	SETSCREW M10 X 25MM PLATED	9
03	05.281.02	FLT WASHER 10MM PLATED FORM C	9
03	05.282.02	SPRING WASHER 10MM PLATED	9
03	05.286.02	NUT M10 PLATED	9
03	06.223.01	GUARD-FRONT HOOD	1
04	06.196.01	GUARD FLEXIBLE 1202 X 196	1
05	05.264.02	SETSCREW M8 X 25MM PLATED	5
05	05.287.01	SELF-LOCKING NUT M8 PLATED	5
05	06.194.01	BACKING STRIP	1
71.020.04 COWL ASSEMBLY REAR 1107MW 9315			
01	05.227.01	HAMMER DRIVE SCREW NO.6X3/8"	2
01	05.264.11	SETSCREW M10 X 20MM PLATED	1
01	05.264.13	SETSCREW M10 X 30MM PLATED	3
01	05.281.02	FLT WASHER 10MM PLATED FORM C	4
01	05.282.02	SPRING WASHER 10MM PLATED	4
01	05.774.07	SERIAL NO. PLATE BOMFORDTURNER	1
01	46642.01	COWL - 1100 LH	1
02	05.281.03	FLAT WASHER 12MM PLATED	2
02	05.287.03	SELF-LOCKING NUT M12 PLATED	2
02	05.839.27	BOLT CUP SQ M12 X 25 (PLATED)	2
02	46643.01	GUARD - DRIVE LH	1
06	05.264.01	SETSCREW M8 X 20MM PLATED	5
06	05.264.13	SETSCREW M10 X 30MM PLATED	4
06	05.281.01	FLAT WASHER 8MM PLATED	5
06	05.287.01	SELF-LOCKING NUT M8 PLATED	5
06	05.287.02	SELF-LOCKING NUT M10 PLATED	4
06	06.201.01	GUARD-REAR	1
71.034.01 REAR PLASTIC GD 1100MW 1682			
04	06.196.01	GUARD FLEXIBLE 1202 X 196	1
04	05.264.02	SETSCREW M8 X 25MM PLATED	5
04	05.287.01	SELF LOCKING NUT M8 PLATED	5
04	06.194.01	BACKING STRIP	1
07	41.176.01	GUARD - SIDE LH	1
07	05.264.23	SETSCREW M12 X 30MM PLATED	2
07	05.287.03	SELF-LOCKING NUT M12 PLATED	2
08	41.176.02	GUARD - SIDE RH	1
08	05.264.23	SETSCREW M12 X 30MM PLATED	2
08	05.287.03	SELF-LOCKING NUT M12 PLATED	2



REF	PART NO	DESCRIPTION	QTY
72.120.01 ROLLER ASSY 1100 - <b>115DIA</b> 3585			
30	05.264.24	SETSCREW M12 X 35MM PLATED	3
30	05.281.03	FLAT WASHER 12MM PLATED	3
30	05.282.03	SPRING WASHER 12MM PLATED	3
30	05.287.03	SELF-LOCKING NUT M12 PLATED	3
30	07.823.01	BRACKET - ROLLER 115 LH	1
31	05.264.24	SETSCREW M12 X 35MM PLATED	3
31	05.281.03	FLAT WASHER 12MM PLATED	3
31	05.282.03	SPRING WASHER 12MM PLATED	3
31	05.287.03	SELF-LOCKING NUT M12 PLATED	3
31	07.823.02	BRACKET - ROLLER 115 RH	1
32	05.959.05	CIRCLIP - INT 62MM DIA	4
33	42954.01	BEARING - D/ROW BALL 30MM BORE	2
34	04.164.04	SEAL-LIP 40DIA X 10MM	2
35	05.953.01	GREASE NIPPLE M6	4
35	41851.01	CAP - BEARING RETAINER	2
36	05.234.01	WASHER 44.5 X 13 X 5MM PLATED	2
36	05.282.03	SPRING WASHER 12MM PLATED	2
36	05.625.10	SKT CAPSCRW M12X30DOME HD PLT	2
36	06.752.01	ROLLER - 1100 X 115 DIA	1

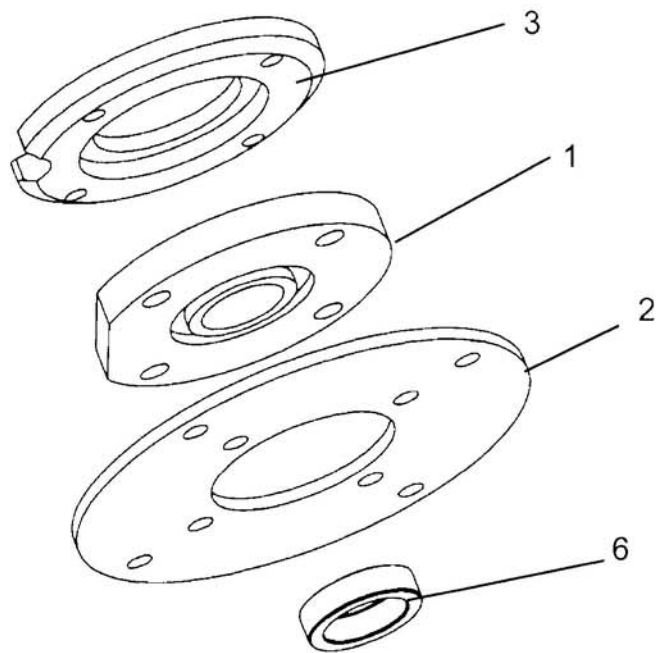
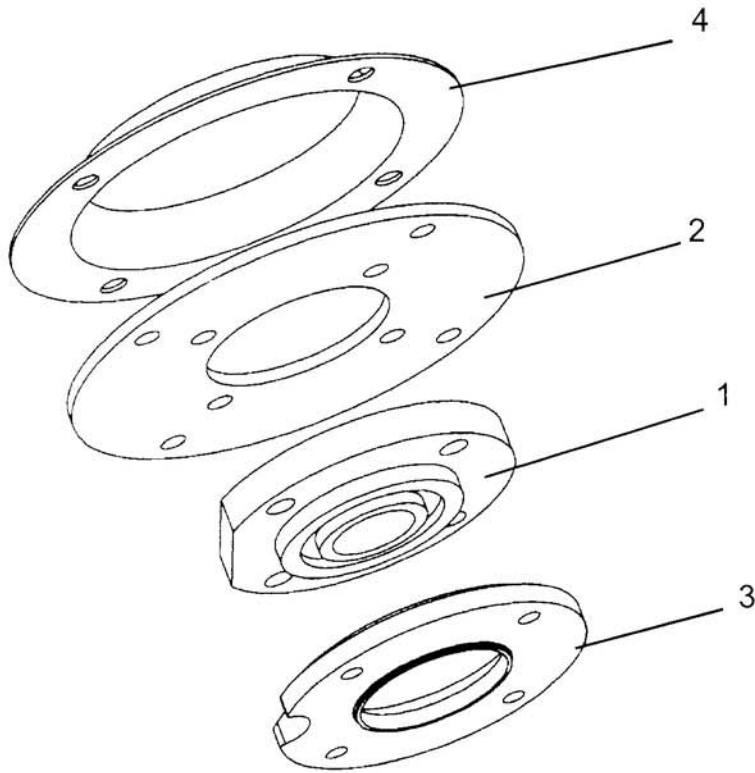
72.121.02 ROLLER ASSY 1100 - **150DIA** 4628

30	05.264.24	SETSCREW M12 X 35MM PLATED	3
30	05.281.03	FLAT WASHER 12MM PLATED	3
30	05.282.03	SPRING WASHER 12MM PLATED	3
30	05.287.03	SELF-LOCKING NUT M12 PLATED	3
30	07.822.01	BRACKET - ROLLER 150 LH	1
31	05.264.24	SETSCREW M12 X 35MM PLATED	3
31	05.281.03	FLAT WASHER 12MM PLATED	3
31	05.282.03	SPRING WASHER 12MM PLATED	3
31	05.287.03	SELF-LOCKING NUT M12 PLATED	3
31	07.822.02	BRACKET - ROLLER 150 RH	1
32	05.959.05	CIRCLIP - INT 62MM DIA	4
33	42954.01	BEARING - D/ROW BALL 30MM BORE	2
34	04.164.04	SEAL-LIP 40DIA X 10MM	2
35	05.953.01	GREASE NIPPLE M6	4
35	41851.01	CAP - BEARING RETAINER	2
36	05.234.01	WASHER 44.5 X 13 X 5MM PLATED	2
36	05.282.03	SPRING WASHER 12MM PLATED	2
36	05.625.10	SKT CAPSCRW M12X30DOME HD PLT	2
36	42955.01	ROLLER - 1100 X 150 DIA	1

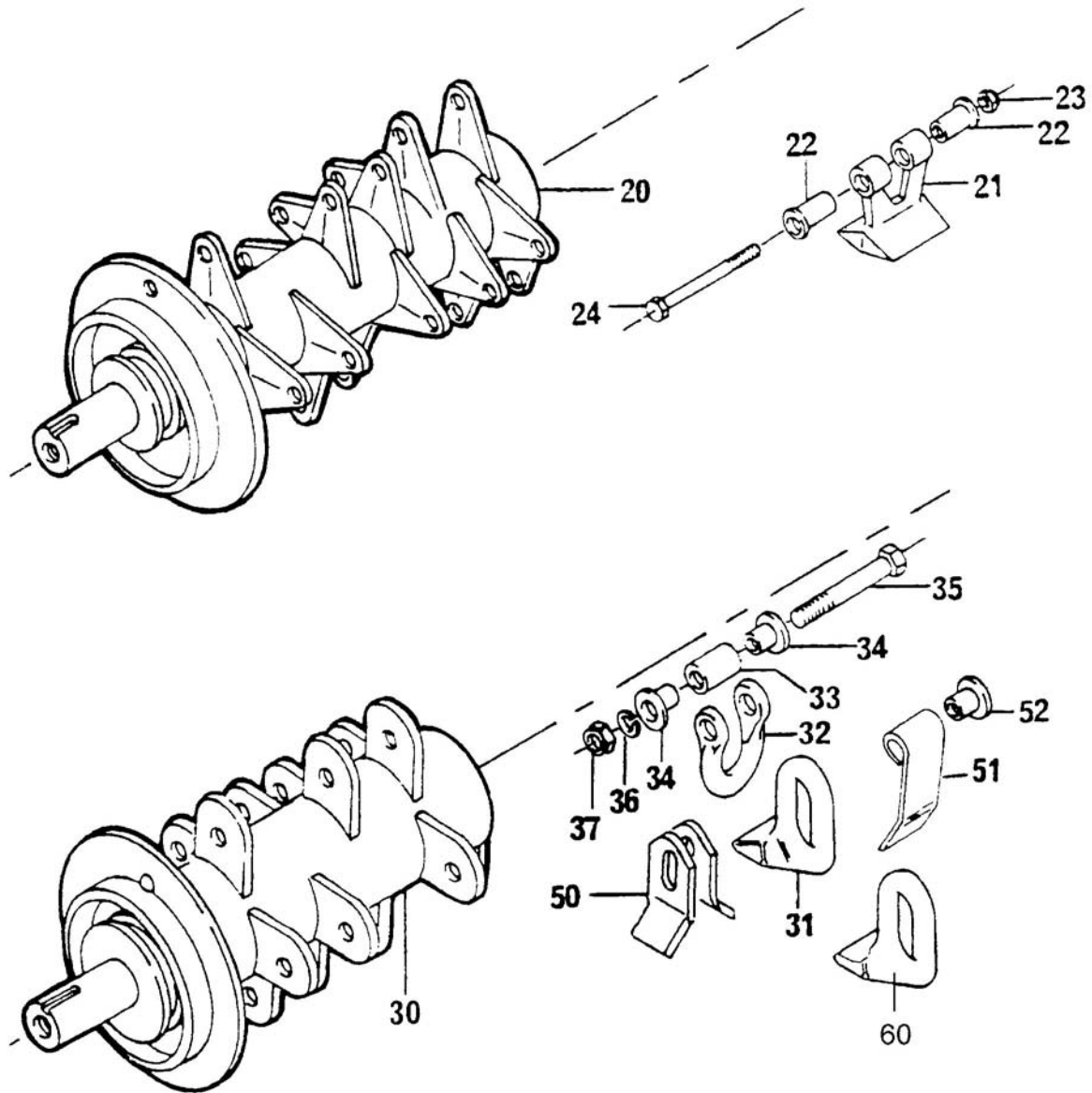




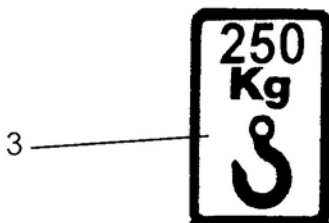
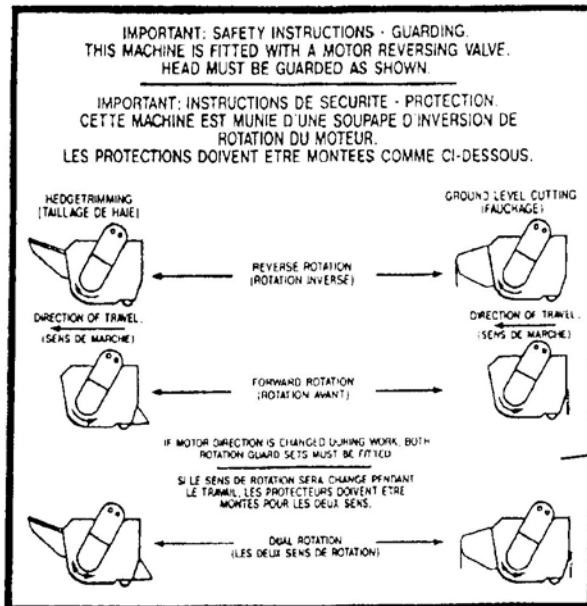
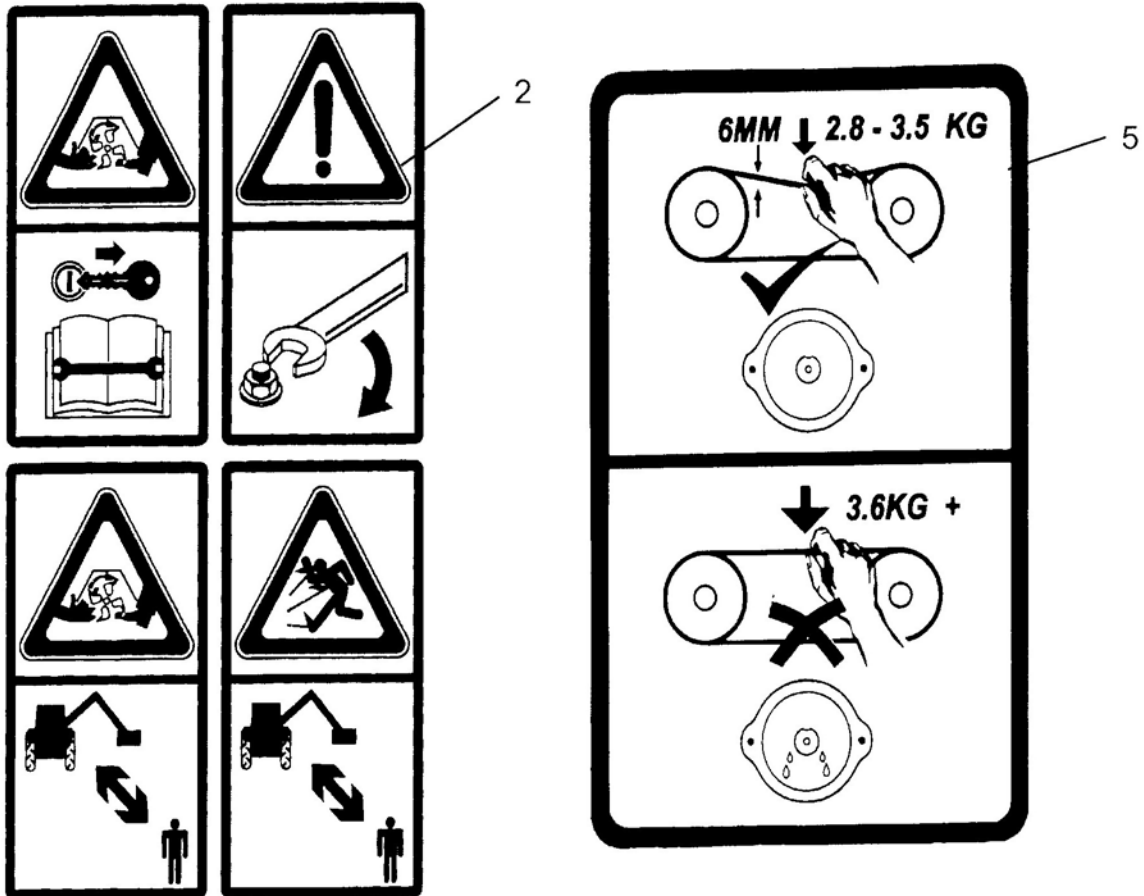
REF	PART NO	DESCRIPTION	QTY
72.124.02 MOTOR 70L PULLEY&BELT ASSY9315			
01	09.773.11	MOTOR ASSY	1
02	46355.03	PLATE - MOTOR MOUNTING	1
03	04.282.56	STUD M10 X 37MM	2
03	05.282.02	SPRING WASHER 10MM PLATED	2
03	05.286.02	NUT M10 PLATED	2
04	05.290.06	BONDED SEAL 3/4"BSP	2
05	05.377.01	ADAPTOR 3/4"BSP X 3/4"BSP	2
06	46365.01	BRACKET - TENSIONER	1
07	05.299.36	V-BELT XPA 1060 QUAD POWER	2
08	03.795.06	PULLEY-VEE 140MM PCD 2 SPA	1
09	05.424.08	TAPER-LOCK 1"BORE (2012)	1
10	03.795.12	PULLY - 2SPA X 160 PCD (T/L)	1
11	05.424.22	TAPER LOCK 40MM BORE (2012)	1
12	05.960.19	KEY - S/REP 12MM X 8MM X 28MM	1



REF	PART NO	DESCRIPTION	QTY
71.025.06 BEARING ASSEMBLY 1107MW 9315			
01	05.264.25	SETSCREW M12 X 40MM PLATED	8
01	05.282.03	SPRING WASHER 12MM PLATED	8
01	06.221.01	BEARING ASSEMBLY 40 - BORE	2
02	05.281.03	FLAT WASHER 12MM PLATED	8
02	05.282.03	SPRING WASHER 12MM PLATED	8
02	05.286.03	NUT M12 PLATED	8
02	05.625.10	SKT CAPSCRW M12X30DOME HD PLT	8
02	06.197.01	PLATE-BEARING NON DRIVE 6MM PL	2
03	06.219.01	DISC-SHIELD	2
04	06.195.01	GUARD-NON DRIVE - 2MM PLT	1
05	02.824.01	WASHER 50 O/DX13 I/DX6MM	2
05	05.264.23	SETSCREW M12 X 30MM PLATED	2
05	05.283.03	SHAKEPROOF WASHER 12MM PLATED	2
06	46655.01	SPACER - ROTOR SHAFT	1



REF	PART NO	DESCRIPTION	QTY
71.026.04 ROTOR SHAFT BMASTER ASSY 2410			
20	06.302.03	ROTOR SH.ASY.0700201/4640201	1
21	46402.01	FLAIL - ADI (BUSHMASTER OPEN)	20
22	42598.02	COLLAR - PIVOT	40
23	05.295.04	S.LOCKING NUT 1/2"UNF PLATED	20
24	05.411.01	BOLT-1/2"UNF X 4.7/8"	20
71.993.01 ROTOR SHAFT 1100 TUB 3199			
30	06.509.01	ROTOR SH.ASY 0650901/0281201	1
32	05.895.01	SHACKLE-FORGED	32
33	02.807.01	SPACER 1"O/D X 16MM I/D X 27MM	32
34	02.801.01	COLLAR 10.5 I/D X26;15 O/D X24	64
35	05.775.02	BOLT M10 X 86MM (FINE)	32
36	05.282.02	SPRING WASHER 10MM PLATED	32
37	05.968.02	SELF LOCKING NUT M10 (FINE)	32
38	05.282.01	SPRING WASHER 8MM PLATED	4
38	06.510.01	LUG BOLT ON	2
38	05.291.01	BOLT M8 X 30MM PLATED	4
50	7190166	FLAIL	32
71.308.02/03 ROTOR SHAFT ASSEMBLY			
30	06.509.01	ROTOR SH.ASY 0650901/0281201	1
31	42750.01	FLAIL FORGED MP44	32
32	05.895.01	SHACKLE-FORGED	32
33	02.807.01	SPACER 1"O/D X 16MM I/D X 27MM	32
34	02.801.01	COLLAR 10.5 I/D X26;15 O/D X 24	64
35	05.775.02	BOLT M10 X 86MM (FINE)	32
36	05.282.02	SPRING WASHER 10MM PLATED	32
37	05.968.02	SELF LOCKING NUT M10 (FINE)	32
38	05.282.01	SPRING WASHER 8MM PLATED	4
38	06.510.01	LUG BOLT ON	2
38	05.291.01	BOLT M8 X 30MM PLATED	4
60	02.959.01	FLAIL FORGED	32



1901

DECALS

1003

---

REF	PART NO	DESCRIPTION	QTY
71.017.05 DECALS - FLAILHEAD 9315			
01	09.810.02	DECAL-GREASE (40 HOURS)	4
02	09.821.35	EURO DECAL - MINIATURISED	1
03	09.843.01	DECAL - LIFT POINT 250 KG	2
04	41.054.01	DECAL - HEAD GUARDING	1
05	42638.02	DECAL BELT TENSION	1
06	45645.02	DECAL - BOMFORD (50MM FONT)	1