

91.001.31  
91.001.32  
91.001.33  
91.001.34  
91.001.35



*For your safety:  
Always read this instruction manual  
before use.*

**OPERATOR & PARTS MANUAL 691**

**Buccaneer  
SDH 130, 150, 180, 200, 220  
Forestry Mulcher**

**IMPORTANT**

This machine is designed for vegetation control and must not be used for any other purpose

It is potentially hazardous to fit or use any parts other than genuine **Bomford Turner** parts.

The company disclaims all liability for the consequences of such use which, in addition, voids the machine warranty.

## IMPORTANT

Note here the serial number of your machine and always quote it in any communication with us or your dealer. This is particularly important when ordering spares. Remember to include all numbers and letters.

Machine serial numbers \_\_\_\_\_

The information given throughout this manual is correct at the time of publication. However, in the course of constant development of Bomford Turner machines, changes in specification are inevitable. Should you find the information given in this book to be at variance with the machine in your possession, you are advised to contact the Bomford Turner Service department where up-to-date information will be provided.

The manual can contain standard and optional features and is not to be used as a machine specification. The machine has been tested and is considered safe if carefully used. Ensure your operator is properly trained in its use and maintenance.

---

## IMPORTANT

Notez ici les numeros de serie de votre machine et mentionnez les dans toute communication avec nos services ou votre revendeur. Ceci est important pour la commande de pieces detachees. Pensez a noter tous les numeros et toutes les letters.

Numeros de serie de la machine \_\_\_\_\_.

Les informations donnees dans ce manuel sont correctes cependant, du fait de developpement constant des machines Bomford Turner. Changements dans les caracteristiques sont inevitables. Si vous trouvez que les informations donnees ne correspondent pas a votre machine veuillez contacter le service des reparations ou des informations plus recentes vous seront donnees.

Ce manuel peut montrer des caracteristiques optionnelles et ne peut pas etre considere comme specification de la machine. Cette machine a ete testee, et elle est consideree comme fiable a condition d'une bonne utilisation. Assurez-vous que votre operateur est qualifie en ce qui concerne l'utilisation de la machine ainsi que son entretien.

---

## WICHTIG

Tragen sie hier die seriennummern ihrer maschine ein und geben sie diese immer an, wenn sie sich an uns oder ihren händler wenden. Das ist besonders bei ersatzteilbestellungen wichtig. Vergessen sie nicht, alle zahlen und buchstaben zu notieren.

Seriennummern der maschine \_\_\_\_\_

Die angaben indiesem handbuch sind bei veröffentliching korrekt. Aufgrund der konstanten weiterentwicklung von Bomford Turner maschinen sind jedochänderugden in der spezifikation unvermeidlich. Wenn die information in diesem handbuch nicht mit ihrer maschine übereinstimmen, nehmen sie bitte kontakt mit der Bomford Turner kundendienstabteilung auf, die ihnen gerne die aktuellen information zukommen lässt.

Das handbuch kann sowohl beschreibungen für die standard ausführung als auch für zubehör enthalten und ist nicht als maschinenspezifikation zu verwendet. Die maschine ist getestet und bei sachgemäßem betrieb als sicher befunden worden. Sorgen sie dafür, dass ihr bedienpersonal in anwendung und wartung richtig geschult wird.

Original Certificate

**EC DECLARATION OF CONFORMITY**  
Conforming to EU Directive 2006/42/EC

We,

Of BOMFORD TURNER LIMITED, Station Road, Salford Priors, Evesham, Worcestershire, WR11 8SW

Declare that we are the authorized representative, responsible for the product (type);

Mounted unit	Product code
<b>BUCCANEER SDH &amp; SDFH130</b>	<b>VENT</b>
<b>BUCCANEER SDH &amp; SDFH 150</b>	<b>VENT</b>
<b>BUCCANEER SDH &amp; SDFH 180</b>	<b>VENT</b>
<b>BUCCANEER SDH &amp; SDFH 200</b>	<b>VENT</b>
<b>BUCCANEER SDH &amp; SDFH 225</b>	<b>VENT</b>

A mounted vegetation control flail mowing attachment.

Serial No(s) & Date:.....

Designed / Manufactured in Europe

This product complies with the required provisions of;

- Directive 2006/42/EC
- Directive 2004/108/EC
- BS EN ISO 12100-1:2010

And other national standards associated with its design and construction as listed in its technical file.

BOMFORD TURNER LIMITED operates an ISO 9001:2008 quality management system.

This system is accredited by;

BSI, Beech House, Linford Wood, Milton Keynes, UK, MK14 6ES

BSI identification number: UKAS 003

Bomford Turner certificate number: FM 34659

Signed.....  


On behalf of BOMFORD TURNER LIMITED Responsible person

Status: Managing Director

Date 03/01/2012



## SAFETY RECOMMENDATIONS

### THE MAJORITY OF WORKING INCIDENTS ARE OWING TO THE LACK OF THE MOST BASIC SAFETY RULES.

- In order to be able to work on the machine safely, it is necessary for it to be supported on a flat surface or solid ground for the tractor and disconnected from the power take off (PTO).
- Ensure that the power of the tractor is sufficient for the required characteristics of the machine in use.
- Keep people or animals away from the machine before unclouping.
- Do not place any object on the machine that may get caught.
- Do not transport people or animals on the machine.
- Check that the PTO is marked with the symbol C.E. and that its chain has been correctly hooked up to avoid radiation of the PTO protector.
- Be particularly careful when working in stony places. Roughness of the ground may result in the machine protectors being temporarily insufficient.
- Be particularly careful when transporting the machine by road, respecting the highway code.

### **Buccaneer**

#### **Hydraulic forestry mulcher with swinging hammers**

#### **Excavator attachment range**

No flow divider (normal flow Casappa motor)

### **Specification**

Buccaneer		Width of cut	Overall width	No of hammer	PTO speed	Hammer type	Weight	Oil flow L/min	Oil pressure
	Model								
SDH	130	1300	1500	22	Direct Drive	Swinging	912	80-120	200-260
SDH	150	1500	1750	26		Swinging	960	80-120	200-260
SDH	180	1800	2000	30		Swinging	1018	80-120	200-260
SDH	200	2000	2250	34		Swinging	1072	80-120	200-260
SDH	220	2200	2500	36		Swinging	1186	80-120	200-260

#### Standard:

- for excavators from 7 – 16 tonnes
- suited to mulch brush up to 200mm diameter
- anti-wear plate rotor
- piston engine

#### Option:

Connection for mini loaders available

### **Buccaneer SDH**

Martillos Fijos		Fixed Hammers	
Tipo Maquina	CTDAD	Machine Type	Qty
SDH 130	22	SDH 130	22
SDH 150	26	SDH 130	26
SDH 180	30	SDH 180	30
SDH 200	34	SDH 200	34
SDH 220	36	SDH 225	36

## 1. USE OF THE INSTRUCTION MANUAL

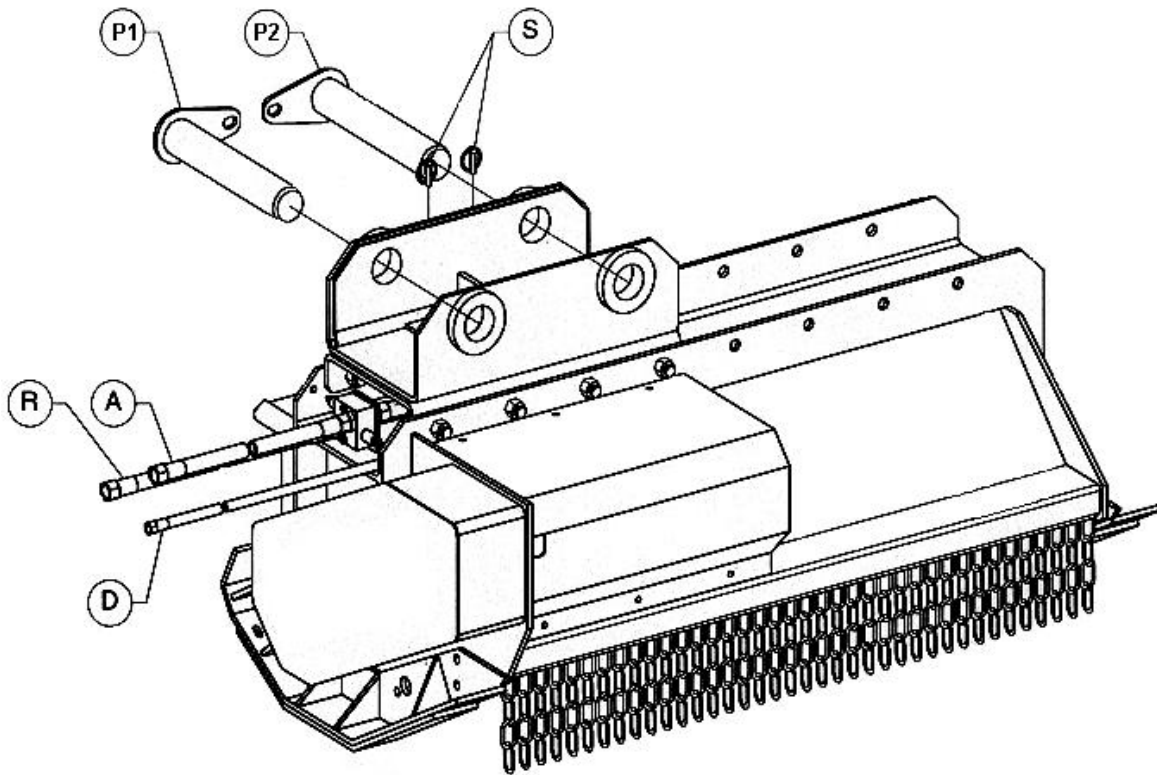
- 1.1 Before starting your Bomford forest shredder you must consult the instructions and safety warnings stated in this manual. These are necessary for its correct starting, attachment to the tractor and use.
- 1.2 Among others, dangerous situations that may be encountered whilst using the machine are indicated by this we aim to achieve the most desirable working and safety conditions.
- 1.3 All the indications in this manual must be carried out according to the indications specified by the tractor and PTO manufacturer, without forgetting the current legislation concerning motor vehicle circulation.

## 2. DO NOT ALLOW THE MACHINE TO BE USED BY YOUNG PEOPLE OR THOSE UNAWARE OF ITS WORKINGS OR THE INSTRUCTIONS FOR ITS STARTING

- 2.1 The control and maintenance of this Bomford forest shredder

### **IS UNDER THE USER'S RESPONSIBILITY**

- 2.2 Inadequate maintenance may result in damage to the machine and lead to dangerous situations.
- 2.3 The user is responsible for damage caused by misuse, or by not following the indications laid out in this manual.
- 2.4 **Bomford** denies all responsibility in the following cases:
  - Partial or total disregard of the instructions manual.
  - Use of non-original Bomford's spare parts.
  - Unauthorised modifications of the machine.
  - Inadequate maintenance.
  - Incorrect operation of the tractor PTO.
  - Attachment to the tractor with a different power to that indicated.
  - Incorrect attachment of the machine to the tractor.
  - Use by inexperienced persons, or those without knowledge of its instructions of use.
  - Misuse.



### 3. MACHINE ASSEMBLY

**CAUTION: SERIOUS INJURY OR EVEN DEATH MAY OCCUR UNLESS CARE IS TAKEN TO ENSURE THE SAFETY OF THE OPERATOR AND BYSTANDERS. DO NOT OPERATE THIS MACHINE WITH ANYONE IN THE IMMEDIATE AREA.**

**WHEN CARRYING OUT OPERATIONS OF THIS KIND, ENSURE THE MACHINE IS PLACED ON A FIRM AND FLAT SURFACE WHICH WILL PROVIDE STABILITY FOR THE MULCHING HEAD AND EXCAVATOR.**

To attach the machine proceed as follows:

1. Identify safety pins S.
2. Pull the pin P1 and P2 and place to one side on a safe surface so they do not interfere with the assembly operation and they will not be damaged if dropped.
3. Approaching cautiously with the excavator and place the dipper near the holes corresponding to the pin P1: engage lock pin and the safety pin by S.
4. Position the rod at the holes corresponding to the pin P2: engaging the lock pin and the safety pin by S.
5. Stop the excavator

Hydraulic fitting can be achieved by connecting the two piston motor ports directly to the "jack hammer" connections usually on the sides of the final arm.

6. Connect the supply pipe A.

7. Connect the return line R.

Flows and pressures from the instruction book will need to be matched with the jack hammer output and machine you have.

8. Connect the drain D. **NOTE:** the drain hose must be free to allow the oil to flow unhampered by quick couplings etc.

The piston motor is equipped with a drain line connection. This will require a pipe connecting this port directly to the tank of the excavator. Pressure in this line should be kept to a minimum pressure say 1 to 2 bar. We would suggest a 12mm hose size for this.

9. With the excavator at idle, open the taps.
10. Allow the oil to flow to fill the oil pipes.
11. Gradually accelerate the motor to achieve the number of revolutions of rotor rpm (2000 rpm / min approximately).
12. Check regularly for any loss of oil.
13. Disconnect power to the machine and slow the excavator down.
14. Now the machine is ready to be used.

#### 4. **DISCONNECT THE MACHINE**

**CAUTION: SERIOUS INJURY OR EVEN DEATH MAY OCCUR UNLESS CARE IS TAKEN TO ENSURE THE SAFETY OF THE OPERATOR AND BYSTANDERS.  
DO NOT OPERATE THIS MACHINE WITH ANYONE IN THE IMMEDIATE AREA.**

**WHEN CARRYING OUT OPERATIONS OF THIS KIND, ENSURE THE MACHINE IS PLACED ON A FIRM AND FLAT SURFACE WHICH WILL PROVIDE STABILITY FOR THE MULCHING HEAD AND EXCAVATOR.**

To disconnect the machine from the excavator, carefully follow the instructions below:

1. Place the machine on the ground.
2. Stop the excavator.
3. Make sure that the rotor of the mulching head has stopped.
4. Close the oil tap.
5. Detach the hydraulic oil supply from the excavator.
6. Release feed pipe A and close with a plug.
7. Remove the return hose R close with a plug.
8. Detach the drain hose D and close with a plug.
9. Release the security pins S.
10. Pull the pin P1 and P2 and place to one side on a safe surface so they do not interfere with the operation and they will not be damaged if dropped.
11. Securely re-position pins P1 and P2.
12. To avoid injury, store the mulching head in a safe area.



## 5. USAGE

**FOR COMPLETELY SAFE USAGE READ THE INSTRUCTIONS MANUAL AND OBERVE THE NECESSARY PRECAUTIONS.**

- 5.1 Respect the direction and speed of rotation of the PTO.
- 5.2 It is the user's responsibility to ensure that no one is found within the range of working of the machine, or at least at an adequately safe distance.
- 5.3 Do not use your forest shredder machine for other jobs for which is not suitable.
- 5.4 The advisable working speed is from 2 to 3 km/h and engine revolutions between 1800 and 2000 rpm.

## 6. SAFETY

**ON NO OCCASION IS WORKING BELOW THE MACHINE ALLOWED. IF IT IS FIXED ON THE TRACTOR, A STABLE SUPPORT MUST BE ATTACHED IN ORDER TO AVOID ANY RISKS**

- 6.1 Do not use the forest shredder before having thoroughly read and understood the instruction manual.
- 6.2 Before carrying out any maintenance or test operation:

**the PTO (tractor power take off) must be at a complete standstill**

- 6.3 Ensure that the pins are well placed with their clips.
- 6.4 Never place your food bellow the working machine.
- 6.5 For its maintenance and testing, replace parts using only original spare parts and components.
- 6.6 Do not transport the scrub cutter machine whilst the rotor is running.
- 6.7 Disconnect the tractor power take off and leave the machine on the ground. Wait until the machine has stopped rotating before stopping the tractor.
- 6.8 The last page reproduces the safety adhesives attached to the forest shredder. This contributes towards safeguarding your safety as well as that of others. It is necessary to keep them in a visible place and replace them when worn.

## 7. MAINTENANCE

**FOR COMPLETELY SAFE WORKING CONDITIONS, ALWAYS USE ORIGINAL BOMFORD PARTS.**

- 7.1 Check the oil level of the machinery every 50 hours (the recommended oil is SAE-90 EP) and it must be replaced during the first 100 hours of operation.
- 7.2 This operation must be repeated for each 400 hours of use.
- 7.3 Lubricate de drive tubes and braces every 8 hours, preferably whilst still warm.

**OIL FOR GROUP 540 RPM:**

**QUANTITY: 1.7 litres**

**RECOMMENDED OIL: SAE-90 EP**

**APPROX. GROUP WEIGHT: 28 kg**

### **LUBRICATION**

Use MOLIKOTE or BR-II in black or green.

Ensure that said grease has ***Bisulphide of Molybdeno.***

Lubricate the machine every 4-5 hours for the lubricating points.

## **8. MAINTENANCE MAIN ASKS**

### **8.1 BEFORE THE WORK CYCLE**

Necessary personnel: 1 driver.

Check the state of the hammers. In case of excessive use, replace and consult a qualified technician.

Check the level of oil in transmission box opening plug. If oil emerges, from the plug hole, the level is correct, if it does not, refill by pouring into plug hole until the highest possible level.

### **8.2 AFTER THE TWO FIRST HOURS OF WORK**

Necessary personnel: 1 qualified technician

Check the tension of the transmission belts. To complete this operation, apply pressure P to the point indicated by the arrow, and verify that the movement is less than F.

WARNING: The operation described must be done with every transmission belt.

### **8.3 AFTER THE FIRST 100 HOURS WORK**

Tighten the counter screws again.

### **8.4 EVERY 300 HOURS WORK**

Change the oil as specified above.

### **8.5 TRANSMISSION BELTS**

#### **8.5.1 TIGHTENING**

The presence of a tensioner on spring eliminates the need to tighten the belts manually.

It is also possible to tighten the belts by changing spring.

To do this operation properly, proceed as follows:

Necessary personnel: 1 qualified technician.

Unscrew counter screw and tighten screw.

#### **8.5.2 REPLACING**

Necessary personnel: 1 qualified technician.

Replace the belts as follows:

Remove the belt cover.

Remove all tension from spring.

Replace belts.

Tighten spring nuts as explained earlier.

Replace belt cover.

**TABLA 9**

**ACCEPTABLE BELT TENSION MEASURES**

Shredder model	P.T.O	P kg	f mm
SDH 130, 150, 180, 200, 220	540/1000 RPM	7.5	11

**Quick list – replacement parts**

Part No	SDH Buccaneer
	ROTOR SDH 180
	ROTOR SDH 200
	ROTOR SDH 225
	ROTOR SDH 250



Model							
SDH 130	1.300	1.500	20	957	5	80-120	200-260
SDH 150	1.500	1.750	24	1.013	5	80-120	200-260
SDH 180	1.800	2.000	28	1.070	7	80-120	200-260
SDH 200	2.000	2.250	32	1.128	7	80-120	200-260
SDH 225	2.250	2.500	36	1.186	7	80-120	200-260

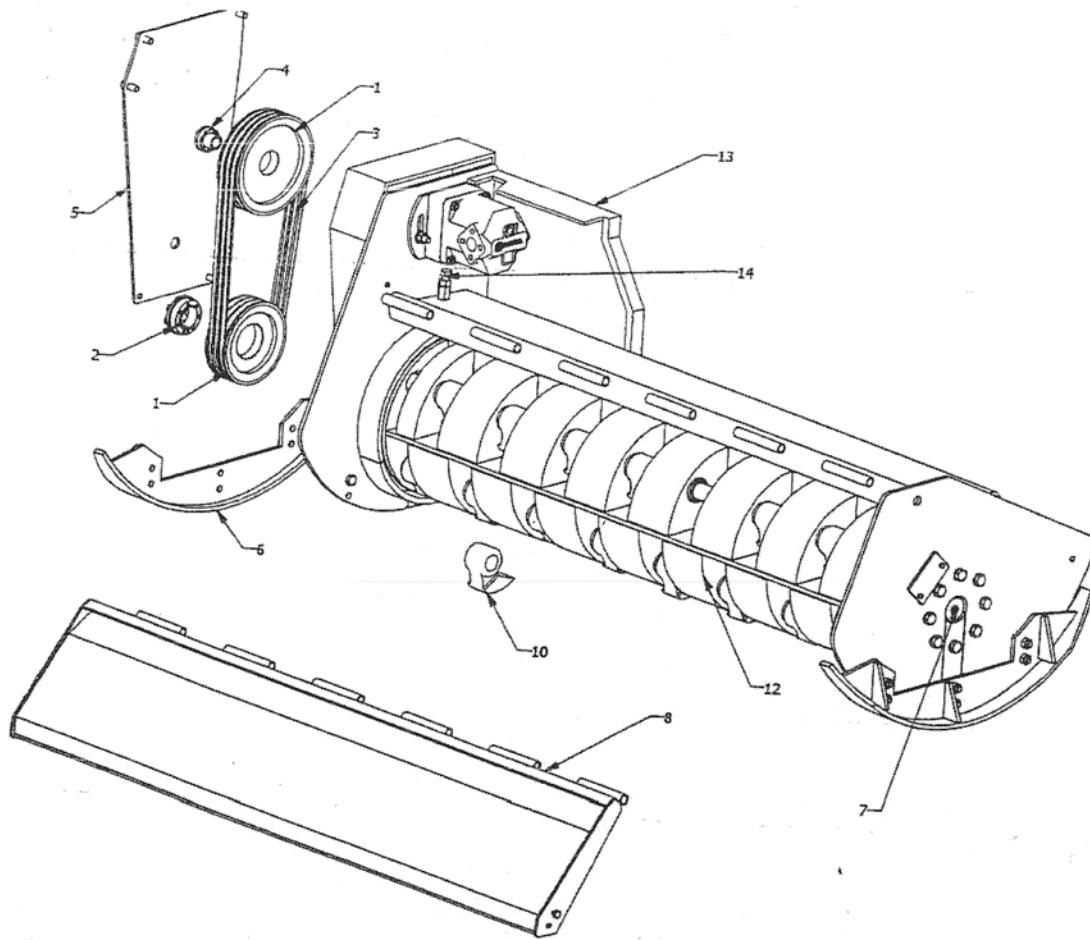


**Parts Manual 691**

**Buccaneer**

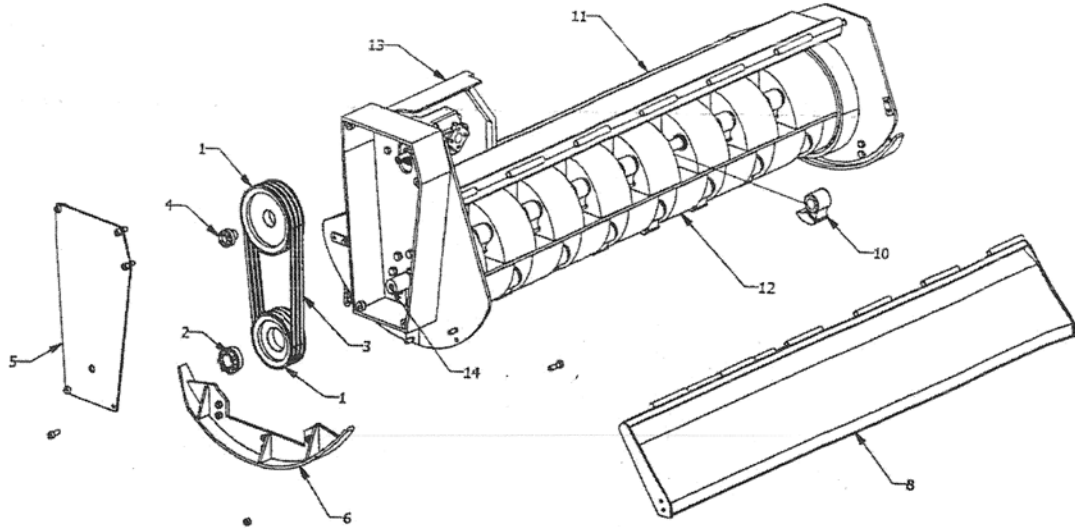
**SDH 130, 150, 180, 200, 220**

**Forestry Mulcher**



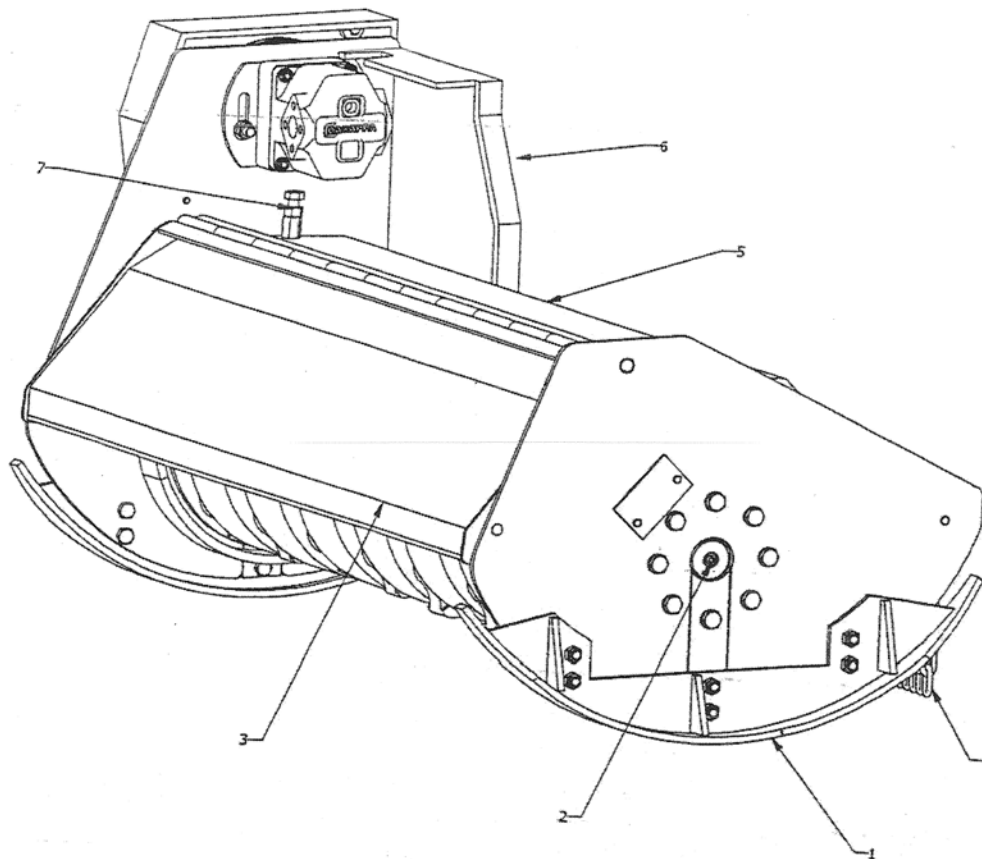
**Fig 1 Buccaneer SDH**

No	Description Spanish	Description English	Qty
1	Polea	Pulley	1
2	Fijador Polea 1	Pulley fixer 1	1
3	Correa Trapezoidal	V-Belt	2
4	Fijador Polea	Pulley fixer	1
5	Tapa Correas	Cover straps	1
6	Base Patin Doblado	Folded skate base	2
7	Engrasador	Nipple – grease point	2
8	Chapa Comporta Doblada	Connexion for mini loaders	1
9	Cadena	Chain	-
10	Martillo	Hammer	1
11	Chasis	Chassis	1
12	Rotor	Rotor	-
13	Protector Motor Hidraulic	Hydraulic motor protection	1
14	Tensor	Belt tensioner screw	1



**Fig 2 Buccaneer SDH**

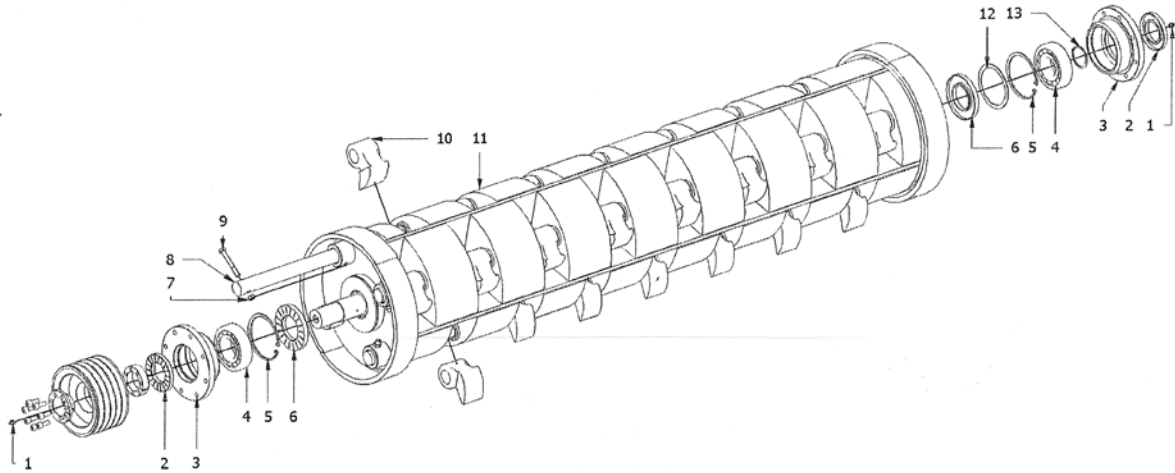
No	Description Spanish	Description English	Qty
1	Polea	Pulley	1
2	Fijador Polea 1	Pulley Bracket 1	1
3	Correa Trapezoidal	V-Belt	2
4	Fijador Polea	Pulley fixer	1
5	Tapa Correas	Cover straps	1
6	Base Patin Doblado	Folded skate base	2
7	Engrasador	Nipple – grease point	2
8	Chapa Comporta Doblada	Connexion for mini loaders	1
9	Cardena	Chain	-
10	Martillo	Hammer	1
11	Chasis	Chassis	1
12	Rotor	Frame	-
13	Protector Motor Hidraulic	Hydraulic motor protection	1
14	Engrasador	Nipple – grease point	1



**Fig 3 Buccaneer SDH**

No	Description Spanish	Description English	Qty
1	Base Patin Doblado	Folded skate base	2
2	Engrasador	Nipple	2
3	Chapa Comporta Doblada	Connexion for mini loaders	1
4	Cadena	Chain	-
5	Chasis	Frame	1
6	Protector Motor Hidraulic	Hydraulic motor protection	1
7	Tensor	Belt tensioner screw	1





**Fig 4 Buccaneer SDH**

No	Description Spanish	Description English	Qty
1	Boquilla lubricante, conico tipo a din 71412 – AM10 x 1 conico corto	Lubricating nozzle, conical type to DIN 71412 – AM10 x 1 short conical	1
2	Reten de aceite de 55 x 100 x 12	Oil seal 55 x 100 x 12	1
3	Buje porta cojinetes	Bearing holder bracket	1
4	Rodamiento del bolas autolineados, doble fila, conico SKF din 630 SKF – SKF 1311 EK	Aligned ball bearing, double row tapered 630 SKF 1311 SKF EK din	24
5	Antillas de retencion din 472 – 120 x 4	Retaining rings DIN 472 – 120 x 4	8
6	Reten de aceite de 65 x 120 x 12	Oil seal 65 x 120 x 12	4
7	Tuercas hexagonales, Estilo 1 – grado ISO 4032 – M10	Hexagon nuts, style 1 – creed ISO 4032 – M10	8
8	Barra Porta Martillos	Hammers holder ba	2
9	Pernos de cabeza hexagonal – vástago reducido – ISO 4015 – M10 x 80	Hex bolts – small rod – ISO 4015 – M10 x 80	2
10	Martillo	Hammer	2
11	Rotor SDH	Rotor SDH	2
12	Anillo separador de 100 x 120 x 2	Spacer ring 100 x 120 x 2	2
13	Antillas de retencion para el eje din 471 – 55 x 2	Restraint rings for axle / shaft DIN 471 – 55 x 2	2