

IM1923

# ***BLADE RUNNER***

*INSTRUCTION BOOK*  
&  
*REPLACEMENT PARTS LISTINGS*  
ISSUE 1

### **IMPORTANT**

NOTE HERE THE SERIAL NUMBER OF YOUR MACHINE AND ALWAYS QUOTE IT IN ANY COMMUNICATION WITH US OR YOUR DEALER. THIS IS PARTICULARLY IMPORTANT WHEN ORDERING SPARES. REMEMBER TO INCLUDE ALL NUMBERS AND LETTERS.

MACHINE SERIAL NUMBERS \_\_\_\_\_

THE INFORMATION GIVEN THROUGHOUT THIS MANUAL IS CORRECT AT THE TIME OF PUBLICATION. HOWEVER, IN THE COURSE OF CONSTANT DEVELOPMENT OF BOMFORD TURNER MACHINES, CHANGES IN SPECIFICATION ARE INEVITABLE. SHOULD YOU FIND THE INFORMATION GIVEN IN THIS BOOK TO BE AT VARIANCE WITH THE MACHINE IN YOUR POSSESSION, YOU ARE ADVISED TO CONTACT THE BOMFORD TURNER SERVICE DEPARTMENT WHERE UP-TO-DATE INFORMATION WILL BE PROVIDED.

THE MANUAL CAN CONTAIN STANDARD AND OPTIONAL FEATURES AND IS NOT TO BE USED AS A MACHINE SPECIFICATION.

THE MACHINE HAS BEEN TESTED AND IS CONSIDERED SAFE IF CAREFULLY USED. ENSURE YOUR OPERATOR IS PROPERLY TRAINED IN ITS USE AND MAINTENANCE.

---

### **IMPORTANT**

NOTEZ ICI LES NUMEROS DE SERIE DE VOTRE MACHINE ET MENTIONNEZ LES DANS TOUTE COMMUNICATION AVEC NOS SERVICES OU VOTRE REVENDEUR. CECI EST IMPORTANT POUR LA COMMANDE DE PIECES DETACHEES. PENSEZ A NOTER TOUS LES NUMEROS ET TOUTES LES LETTERS.

NUMEROS DE SERIE DE LA MACHINE \_\_\_\_\_.

LES INFORMATIONS DONNEES DANS CE MANUEL SONT CORRECTES CEPENDANT, DU FAIT DE DEVELOPPEMENT CONSTANT DES MACHINES BOMFORD TURNER.

CHANGEMENTS DANS LES CARACTERISTIQUES SONT INEVITABLES.

SI VOUS TROUVEZ QUE LES INFORMATIONS DONNEES NE CORRESPONDENT PAS A VOTRE MACHINE VEUILLEZ CONTACTER LE SERVICE DES REPARATIONS OU DES INFORMATIONS PLUS RECENTES VOUS SERONT DONNEES.

CE MANUEL PEUT MONTRER DES CARACTERISTIQUES OPTIONNELLES ET NE PEUT PAS ETRE CONSIDERE COMME SPECIFICATION DE LA MACHINE.

CETTE MACHINE A ETE TESTEE, ET ELLE EST CONSIDEREE COMME FIABLE A CONDITION D'UNE BONNE UTILISATION. ASSUREZ-VOUS QUE VOTRE OPERATEUR EST QUALIFIE EN CE QUI CONCERNE L'UTILISATION DE LA MACHINE AINSI QUE SON ENTRETIEN.

---

### **WICHTIG**

TRAGEN SIE HIER DIE SERIENNUMMERN IHRER MASCHINE EIN UND GEBEN SIE DIESE IMMER AN, WENN SIE SICH AN UNS ODER IHREN HÄNDLER WENDEN. DAS IST BESONDERS BEI ERSATZTEILBESTELLUNGEN WICHTIG. VERGESSEN SIE NICHT, ALLE ZAHLEN UND BUCHSTABEN ZU NOTIEREN.

SERIENNUMMERN DER MASCHINE \_\_\_\_\_

DIE ANGABEN IN DIESEM HANDBUCH SIND BEI VERÖFFENTLICHUNG KORREKT. AUFGRUND DER KONSTANTEN WEITERENTWICKLUNG VON BOMFORD TURNER MASCHINEN SIND JEDOCHÄNDERUGDEN IN DER SPEZIFIKATION UNVERMEIDLICH. WENN DIE INFORMATION IN DIESEM HANDBUCH NICHT MIT IHRER MASCHINE ÜBEREINSTIMMEN, NEHMEN SIE BITTE KONTAKT MIT DER BOMFORD TURNER KUNDENDIENSTABTEILUNG AUF, DIE IHNEN GERNE DIE AKTUELLEN INFORMATION ZUKOMMEN LÄSST.

DAS HANDBUCH KANN SOWOHL BESCHREIBUNGEN FÜR DIE STANDARD AUSFÜHRUNG ALS AUCH FÜR ZUBEHÖR ENTHALTEN UND IST NICHT ALS MASCHINENSPEZIFIKATION ZU VERWENDET.

DIE MASCHINE IST GETESTET UND BEI SACHGEMÄSSEM BETRIEB ALS SICHER BEFUNDEN WORDEN. SORGEN SIE DAFÜR, DASS IHR BEDIENPERSONAL IN ANWENDUNG UND WARTUNG RICHTIG GESCHULT WIRD.

This manual describes the Blade-Runner range of circular saw pruning attachments for fitting to suitable hedge cutter/arm mowers.

The use of this machine may present numerous safety hazards to both the general public and the operator and it is essential that the machine is operated in line with the procedures and practices detailed in this manual. In addition reference should be made to the information provided by the hedge cutter/arm mower manufacturer and the tractor manufacturer.

This machine must only be used on tractors fitted with a safety cab and this must be glazed with shatterproof safety glass manufactured to recognised safety standards. At all times when in use a wire mesh cab protector must also be fitted.

Section	Page No.
1. INDEX	1 -
2. TECHNICAL DETAILS	2 - 1 TO 2 - 2
3. SAFETY PRECAUTIONS	3 - 1 TO 3 - 2
4. INSTALLATION	4 - 1
5. GENERAL OPERATION	5 - 1
6. MAINTENANCE	6 - 1 TO 6 - 5
7. REPLACEMENT PARTS	7 - 1 TO 7 - 23

### IMPORTANT

This machine is designed for vegetation control and must not be used for any other purpose.

It is potentially hazardous to fit or use. Any parts other than genuine **Bomford Turner** parts.

The company disclaims all liability for the consequences of such use  
which, in addition, voids the machine warranty.

## WEIGHT

The design of the saw head is modular and its weight depends upon which modules have been attached or removed. It is important to ensure that your hedge cutter is suitable to carry the weight of the saw head selected

600 DIA BLADE				650 DIA BLADE				700 DIA BLADE			
Part No	No of Blades	Weight (kg)	Cutting Width	Part No	No of Blades	Weight (kg)	Cutting Width	Part No	No of Blades	Weight (kg)	Cutting Width
91.360.01	3	195	156cm	91.365.01	3	199	161cm	91.370.01	3	205	166cm
91.460.01	4	236	204cm	91.465.01	4	242	209cm	91.470.01	4	250	214cm

**IMPORTANT** – When checking that your tractor/hedge cutter combination is suitable for the attachment of a “Blade-Runner” you must remember to add to the weight of the mounting bracket and hydraulic kit to the weight of your cutting head.

## HYDRAULIC REQUIREMENTS

Minimum flow	70l/min
Maximum flow	200l/min
Operating pressure	150 bar
Maximum pressure	250 bar

Relief valves mounted on the motor protect the machine from flows and pressures in excess of the above figures.

## BLADE SPEED

Recommended speed	2200 rpm
-------------------	----------

**DANGER** – Do not exceed 2600 rpm under any circumstances.

## NOISE.

The sound level of the machine when equipped with circular saw blades is in the region of 95db at 2200 rpm, (when the machine is not cutting vegetation). At daily noise exposure levels of between 85 and 90 dB suitable ear protectors are recommended.

This sound level makes it necessary to wear ear defenders or other suitable protection when using the machine.

## NOTE

This machine is designed for the cutting and pruning hedges and trees. This operation is effective on old or annual growth (cutting dry or green wood).

Do not use the saw head at ground level; they are not suitable for grass/scrub cutting. The blades are only designed for pruning aerial vegetation (hedges, trees, etc).

COPY OF CERTIFICATE OF CONFORMITY

**CERTIFICAT DE CONFORMITE**

Le constructeur soussigné :

STE KIROGN  
BP 127 - VILLEXAVIER  
17504 JONZAC CEDEX

déclare ci-après que :

MARQUE: **KIROGN**

TYPE: **LAMIER D'ELAGAGE MODULAIRE**

Numéro de série :

est conforme aux dispositions de la Directive "Machines"  
(**Directive 98/37/CE**), modifiée et aux législations nationales  
la transposant,

d'autre part, est conforme à la norme NF P 98-780 "Machine  
de taille mécanique des végétaux".

Fait à VILLEXAVIER  
le

Le Gérant  
M. COLLARD Michel



P.08

**SAFETY**

Read, Understand and Follow the Safety Messages. Serious injury or death may occur unless care is taken to follow the warnings and instructions given in the safety messages,

**CAUTION!** The lowest level of Safety Message; warns of possible injury.

**WARNING!** Serious injury or possible death.

**DANGER!** Imminent death/critical injury.

Never operate the tractor or machinery until you have read and completely understand this manual, the hedge cutter manufacturers manual and the tractor operators manual and each of the safety messages found in the manuals and those displayed on the tractor and implement.

Do not allow an untrained person to operate the machine without supervision.

**DANGER!** DO NOT attempt any maintenance of or adjustment to the machine while it is running. Before carrying out any work on the machine follow the three safety instructions below:

- a LOWER THE SAW HEAD ON TO THE GROUND
- b PUT THE PTO OUT OF GEAR
- c STOP THE TRACTOR ENGINE
- d WAIT UNTIL THE BLADES HAVE STOPPED ROTATING

**WARNING!** Ensure that the correct guards and deflectors are properly fitted to the machine and tractor at all times and that they are in good condition.

**DANGER!** When using the saw head the tractor MUST be fitted with a glazed safety cab, A polycarbonate safety screen must also be used on cabs where windows are likely to be left open for ventilation purposes. We emphasise that cab windows on the operating side through which the cutting head is observed MUST be intact, clean and closed, or a clear polycarbonate safety screen must be fitted where hedge cutting and trimming operations are carried out.

**DANGER!** A wire mesh cab guard must be fitted on the outside of the cab window, between the operator and the cutting head, in such a position as to give the operator maximum protection.

**DANGER!** Keep all bystanders well clear of the work area. Do not start the machine until you are sure there is no risk to anyone in the area.

**DANGER!** With the saw head in use the cut branches can be very large and fall from a height of up to 10 metres and therefore the operator is at risk from falling objects. which may penetrate the tractor cab. The cab therefore must be fitted with a protective structure that meets ISO 8083 standard to prevent injury to the driver.

**DANGER!** **AVOID WIRE.** It can be extremely dangerous if wire catches in the blades, and every care must be taken to ensure this will not happen. Inspect the working area before commencing. Remove all loose wire and obstructions and clearly mark those that are fixed so that you can avoid them.

**DANGER!** Keep clear of electric power lines. The saw head can work at the height of some electric power lines. You must keep the head a minimum of 3 metres away from power lines to avoid electrocution

**DANGER!** You must be aware of the heads working position. The striped red and white marking at the extremities of the cutter head help the operator view the head when in work. In particular when working in dense vegetation you must always be able to monitor the cutter head.

**DANGER!** Keep your forward speed to a level appropriate to the operating conditions. High-speed manoeuvres with the arms stretched out are very dangerous, particularly on uneven ground where there is risk of overturning.

**DANGER!** Avoid contact with the blades while the machine is operating. During work the blades are not protected at the front or sides of the head. It is necessary to place warning signs on the highway to warn people when work is in progress. Keep all people clear of the work area.

**WARNING!** Direct the cut material away from the tractor. It is important that while operating the cut material is not directed towards the operator. Avoid positioning the cutting head so that the underside is angled towards the cab.

**DANGER!** Keep a careful watch for passers by who may inadvertently get in the way of cut material being thrown from the saw head. These machines are capable under adverse conditions of throwing objects great distances at high velocity. Stop the machine until all people are well clear.

**WARNING!** Transport the machine only at safe speeds. Serious accidents and injuries can result from operating this equipment at unsafe speeds

SAFETY DECALS

Safety decals are located on various points of the machine. They can be identified by the yellow upper panel depicting the hazard, and the lower white panel indicating means of avoidance or precautions to be taken. These decals have no text. It is essential that all operators and personnel associated with the machine fully understand their meanings, which are shown below.

Any safety decals which are found missing should be replaced.



**STOP ENGINE AND REMOVE KEY BEFORE ATTEMPTING MAINTENANCE OR REPAIRS**



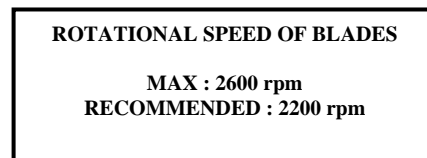
**AVOID OVERHEAD CABLES DANGER OF ELECTRIC SHOCK**



**DANGER THROWN OBJECTS KEEP CLEAR**



**HEARING PROTECTION MUST BE WORN**



**BLADE SPEED**

## FITTING THE SAW HEAD

Check that the tractor has a cab fitted with safety glass to recognised standards, a wire mesh safety screen is fitted over the cab windows and if cab windows are open a polycarbonate screen is also fitted.

**DANGER:** This machine must not be used on tractors that do not have safety cabs and suitable cab protection screens.

On Bomford hedge cutters the clamp normally used for securing the flail head to the head angling bracket is used for securing the saw head to the hedge cutter. The position of the saw head can be adjusted to obtain a satisfactory offset.

When the head is in the selected position ensure that all nuts and bolts are tight.

## HYDRAULIC REQUIREMENTS

Check the output of the hydraulic system of your hedge cutter:

If your hedge cutter has a hydraulic system with a capacity of up to 89 ltrs / min the saw head must have a 36 cc motor. With this motor the minimum flow should be 70 ltrs and the maximum 89 ltrs.

If your hedge cutter has an hydraulic system with a capacity of over 90 ltrs / min the saw head must have a 45 cc motor. With this motor the minimum flow should be 90 ltrs and the maximum 140 ltrs.

Hoses from the hedge cutters hydraulic system are connected to a block on the saw head motor. This block limits the pressure entering the motor to 150 bar and at this pressure the maximum speed of the blades is 2600 rpm. The connection block incorporates 2 relief valves, The recommended operating speed of the blades is 2200 rpm.

NOTE - The saw heads hydraulic system must not be subjected to supply pressures over 250 bar.

Output of your Hedgecutter	Motor Capacity	Maximum Speed of Cutter Rotation
From 40 to 59 L/min	19 cc	2600 rpm
From 60 to 69 L/min	30 cc	2600 rpm
From 70 to 89 L/min	36 cc	2600 rpm
From 90 to 140 L/min	45 cc	2600 rpm

## HYDRAULIC HOSES

Check all hoses are routed well clear of the blades. Ensure they are positioned and secured to allow for movement of the head and avoid sharp edges to prevent chafing.



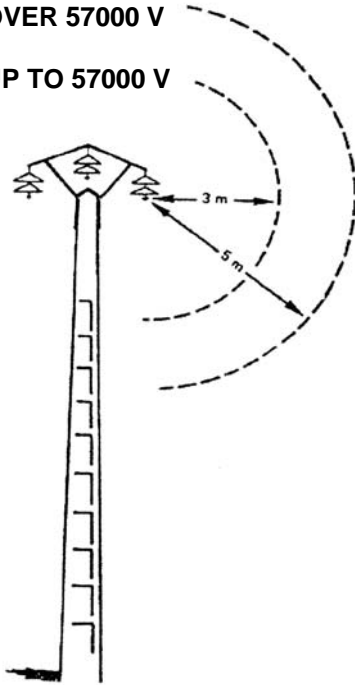
## BEFORE STARTING WORK

Ensure that all personnel and bystanders are well clear of the operating area..

Avoid electricity supply and other overhead cables - see the chart below.

**OVER 57000 V**

**UP TO 57000 V**



Lines carrying up to 57000 V      keep at least 3m away  
 Lines carrying over 57000 V      Keep at least 5m away

It is suggested that when planning work close to overhead power lines the power supply company are contacted so that they can ascertain the power level in the lines, the risks involved and what other precautions need to be taken.

Allowance should be made for lines swinging or moving in windy conditions and the possibility of branches falling on the lines during work.

**DANGER!** Always keep a careful lookout and use extreme care when working around overhead obstructions. Never allow the saw head or arms within 3 metres of any power line.

Ensure the saw head is securely attached to the hedge cutter and all hydraulic connections are tight,

Check that the blades are securely attached, are in good condition and are sharp.

## TO START THE SAW HEAD

- 1 Remove the protective covers to expose the saw blades.
- 2 Start tractor and engage PTO
- 3 Gradually increase the speed of the blades to the recommended working speed of 2200 rpm.

**DANGER!** The operator must be seated in the tractor cab before starting the saw head. Do not leave the tractor cab with the saw head running.

## TO STOP THE SAW HEAD

1. Slowly reduce the speed of the blades.
- 2 Disengage the PTO and stop the tractor engine
- 3 Wait until the blades have stopped revolving before leaving the tractor cab.
- 4 Immediately refit the blade protectors.

**WARNING.** Do not stop the saw blades immediately except in an emergency as this can cause damage to the hydraulic components. To stop the blades in an emergency use the tractor stop control. Use of the tractor stop control must only be done in an emergency. After an emergency stop of the blades; ensure that the PTO lever and rotor control is set to **OFF** before restarting the tractor.

**DANGER!** DO NOT attempt any maintenance of or adjustment to the machine while it is running. Stop the tractor engine and remove the ignition key before any servicing.

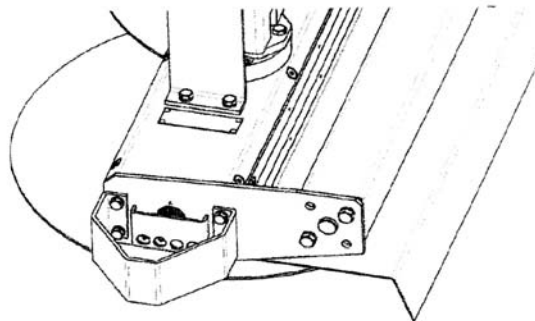
MAINTENANCE & SERVICE INTERVALS	FREQUENCY OF SERVICE	MAINTENANCE	
		BY USER	BY SPECIALIST
Check hoses, nuts & bolts	Every 2 hrs	X	
Clean interior & exterior completely	Every 8 hrs	X	
Grease the pulleys	Every 10 hrs	X	
Check belts tension	Every 8 hrs	X	
Check the cutting blades	Every 1 hrs	X	
Sharpen the saw blades	Every 8 hrs		X
Align the saw blades	Each sharpening		X
Check the general blade condition	Each sharpening		X

This list is not exhaustive and is included to help service your equipment. For more information do not hesitate to contact our service department.

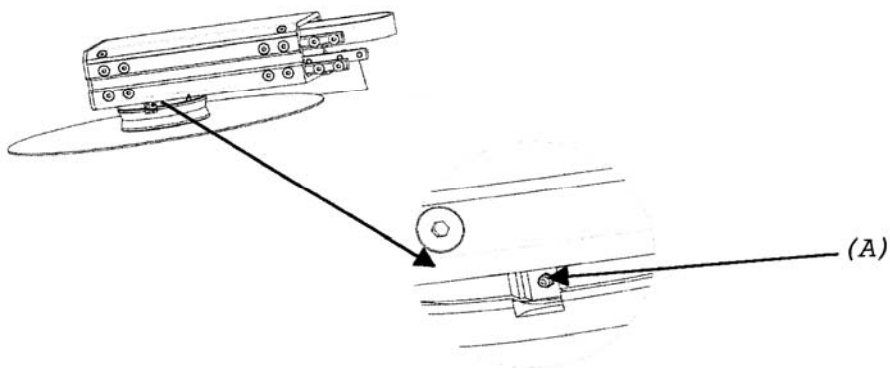
**LUBRICATION**

Lubrication Interval  
10 Hours

Lubricant  
EP2 ISO : LXBCF B2



The saw head is fitted with a centralised lubrication system for the base unit. If an additional module has been fitted it will not have centralised lubrication to its bearing. Lubricate as shown below.



The lubrication point is placed inside the flange (A).

**BELT TENSION**

NOTE – It is important that the belts are tensioned after the first 8 hours of use. A special tool is available which is designed to test the belt tension of the saw head. For further information contact our Service Department.

**TO TENSION THE BELTS**

- 1) Loosen the 4 bolts of the bearing block but not the one on the hydraulic motor.
- 2) Start tensioning at the motor bearing and move out to both ends.
- 3) Tension the belts using the adjusting screws placed inside each bearing block.
- 4) With the belt just tight make 2 marks on the belt, 400mm apart, Tension the belts progressively until this distance increases to 402.5mm.

It is recommended that the belt tension be checked again after having manually turned the belt through one revolution

Do not forget to keep turning the belt and pulley while tensioning.

**SAW BLADE MAINTENANCE**

To maintain optimum performance regular inspection and sharpening of the blades is necessary. Depending on the material being cut and other operating conditions the blades should be inspected and sharpened after every 8 hours of work,

**REPAIRS**

All repairs and servicing must be carried out with the saw head resting on a flat surface and supported on suitable blocks. Do not under any circumstances rest the head on its blades as this may bend or damage them. Do not support the head on the rear guard.

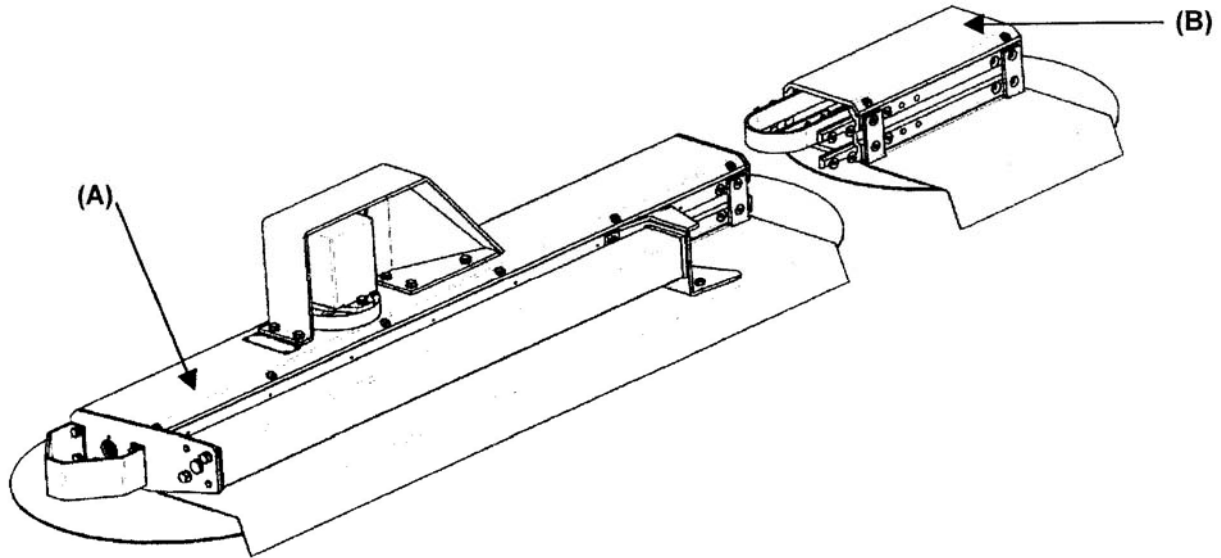
**CAUTION!** Always wear protective gloves when handling blades

**FAULT FINDING**

<b>FAULT</b>	<b>CAUSES &amp; REMEDY</b>
Hydraulic motor leaking	Change the seals Checking the pressure relief circuit (max. pressure 0.7 K in continuous flow)
Belts Slipping	Re-tension belts
“Regular Purr”	Lubricate. Change bearings.
Irregular noise as “Tac-Tac” with speed variation depending on rotation speed	Check belt tension
Blades stop while working	Check Blades are sharp. Check pressure on relief valve is set to “150 bar” Check blade speed is 2200 RPM
Bearing blocks overheat	Check the bearings. Replace if worn or damaged. Clean and lubricate
Noisy hydraulic motor when starting or stopping the cutter blades	Check blades rotate at the correct speed
White smoke from the saw head	Belts Slipping Check belt tension

**ADDING ADDITIONAL MODULES**

The design of the machine enables the addition of additional modules to extend the machine, The basic machine is equipped with a hydraulic motor (A) to which can be added an extension section (B) see the illustration below.

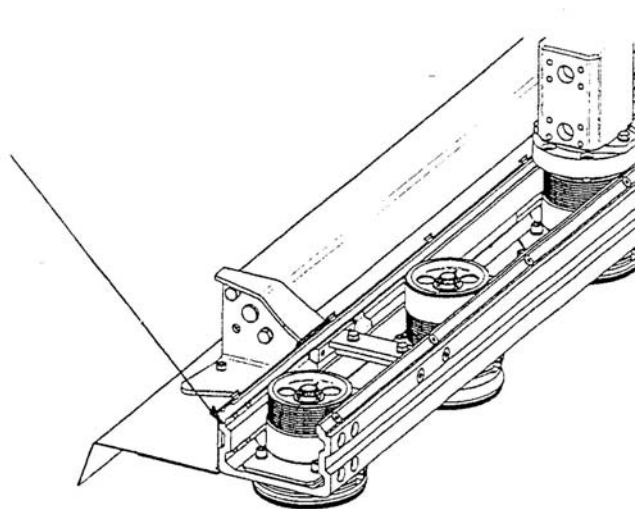


**WARNING** When adding additional modules check that it does not exceed the weight limits of your tractor/hedge cutter combination.

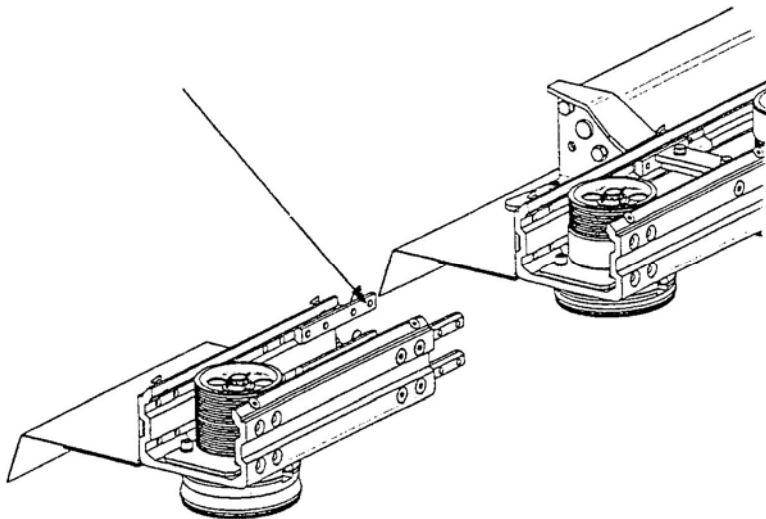
When choosing an additional module it should be fitted with a blade of the same diameter as the base machine

**To fit an additional module**

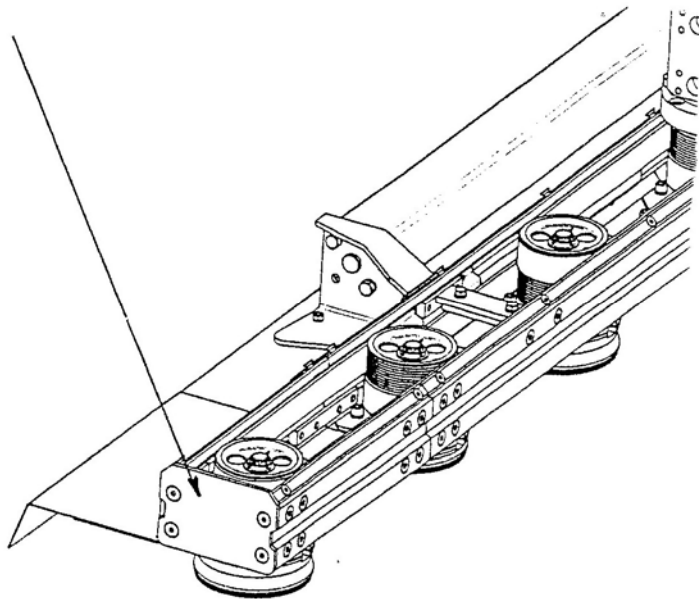
- 1 Unscrew the 8 bolts securing the belt guard.
- 2 Remove the end cover plate.



- 3 Fit the four extension bars to make the link between the base machine and the additional module.



- 4 After fitting the additional module, refit the end plate.  
5 Fit the additional belt adjust the tension as described on page 6 - 2



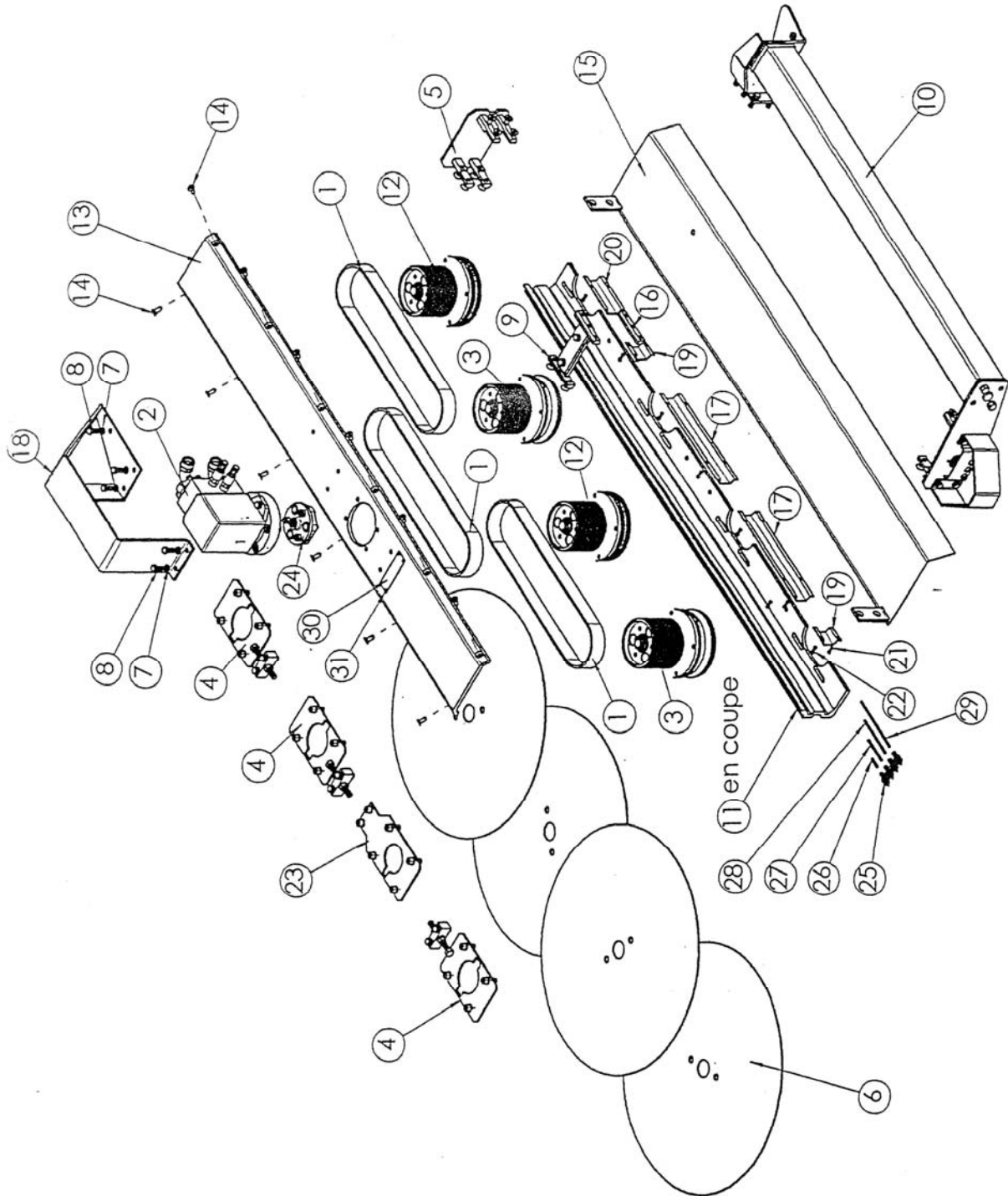
- 5 Refit the belt guards of the machine

NOTES

## **REPLACEMENT PARTS**

4 BLADE HEAD

600 DIA Ref. 01.460.01  
650 DIA Ref. 01.465.01  
700 DIA Ref. 01.470.01



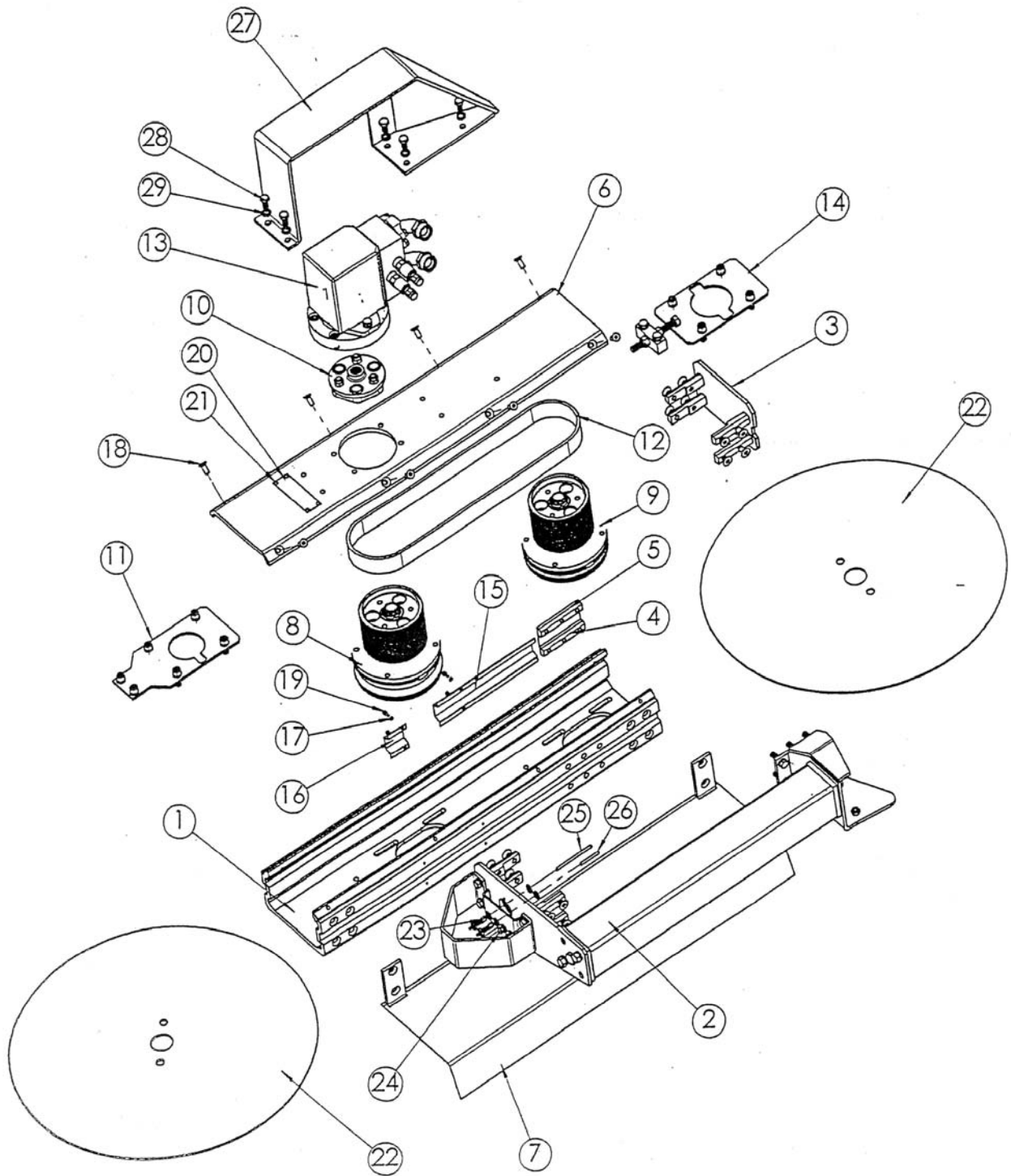


## 6 BLADE HEAD

REP.	REF. PIECE	QTE	DESIGNATION
.1	6531.0107	3	Poly Vee belt 1397/55.00 L 10
.2	PAGE 7 - 20	1	Motor assembly
.3	PAGE 7 - 16	2	Poly Vee - long shaft assembly
.4	PAGE 7 - 13	3	Belt adjustment assembly
.5	PAGE 7 - 12	1	End plate assembly
.6	7120.0214 } 7120.0215 } 7120.0212 }	4	Blade Ø 600 Blade Ø 650 Blade Ø 700
.7	6507.5104	5	Washer W 12
.8	6502.3507	5	Screw H 12 x 25 ZN
.9	PAGE 7 - 20	1	Connection assembly
.10	PAGE 7 - 16	1	Attachment assembly
.11	5812.6401	1	Frame
.12	PAGE 7 - 14	2	Poly Vee - short shaft assembly
.13	5812.5401	1	Cover
.14	6504.0404	12	Screw FZ M 10 x 25
.15	5812.2641	1	Sheet metal deflector 4 blades
.16	5812.0704	1	Interior slice
.17	5812.1603	2	Cover for long grease tube
.18	5812.1501	1	Cover motor protector
.19	5812.1602	2	Cover for short grease tube
.20	5812.1601	1	Cover for grease tube
.21	6507.5111	14	Washer W 5 ZN
.22	6503.1110	14	Screw CHC M 5 x 12
.23	PAGE 7 - 13	1	Motor plate assembly
.24	PAGE 7 - 19	1	Coupling assembly
.25	PAGE 7 - 18	4	Grease pipe through bulkhead
.26	5812.1803	1	Tube 3/6 L = 340
.27	5812.1804	1	Tube 3/6 L = 820
.28	5812.1805	1	Tube 3/6 L = 1320
.29	5812.1806	1	Tube 3/6 L = 1830
.30			
.31			

2 BLADE HEAD

600 DIA Ref. 5812.9001  
650 DIA Ref. 5812.9002  
700 DIA Ref. 5812.9003

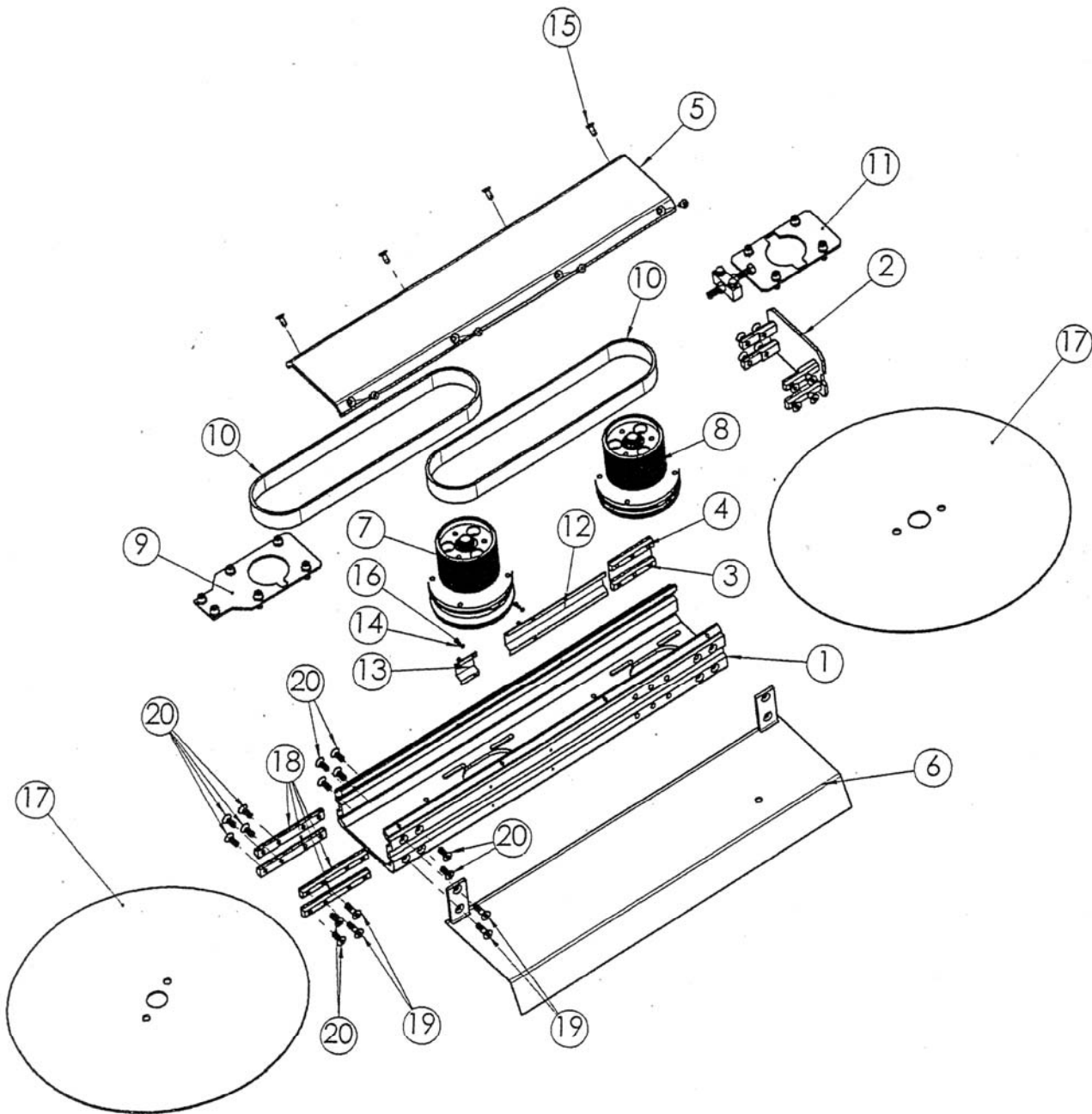


## 2 BLADE HEAD

REP.	REF. PIECE	QTE	DESIGNATION
.1	5812.6201	1	Frame
.2	<b>PAGE 7 - 10</b>	1	Attachment assembly
.3	<b>PAGE 7 - 12</b>	1	End plate assembly
.4	5812.0704	1	Interior slice
.5	5812.0705	1	Plated slice
.6	5812.5201	1	Cover
.7	5812.2621	1	Sheet metal deflector 2 blades
.8	<b>PAGE 7 - 16</b>	1	Poly Vee - long shaft assembly
.9	<b>PAGE 7 - 14</b>	1	Poly Vee - short shaft assembly
.10	<b>PAGE 7 - 19</b>	1	Coupling assembly
.11	<b>PAGE 7 - 13</b>	1	Motor plate assembly
.12	6531.0107	1	Poly Vee 1397/55.0 L 10
.13	<b>PAGE 7 - 19</b>	1	Motor assembly
.14	<b>PAGE 7 - 13</b>	1	Belt adjustment assembly
.15	5812.1601	1	Cover for long grease tube
.16	5812.1602	1	Cover for short grease tube
.17	6507.5111	4	Washer W 5 ZN
.18	6504.0404	8	Screw FZ M 10 x 25
.19	6503.1110	4	Screw CHC M 5 x 12
.20	6991.0003	1	Registration plate
.21	6514.0102	4	Rivet POP Ø 4 x 12
.22	7120.0214 } 7120.0215 } 7120.0212 }	2	Blade Ø 600 Blade Ø 650 Blade Ø 700
.23	<b>PAGE 7 - 18</b>	2	Grease pipe through bulkhead
.24	6543.2004	2	Stopper F 5
.25	5812.1801	1	Tube 3/6 L = 990
.26	5812.1802	1	Tube 3/6 L = 510
.27	5812.1501	1	Cover motor protector
.28	6502.3507	5	Screw H 12 x 25 ZN
.29	6507.5104	5	Washer W 12

2 SECTION EXTENSION

600 DIA Ref. 5812.9016  
650 DIA Ref. 5812.9017  
700 DIA Ref. 5812.9018

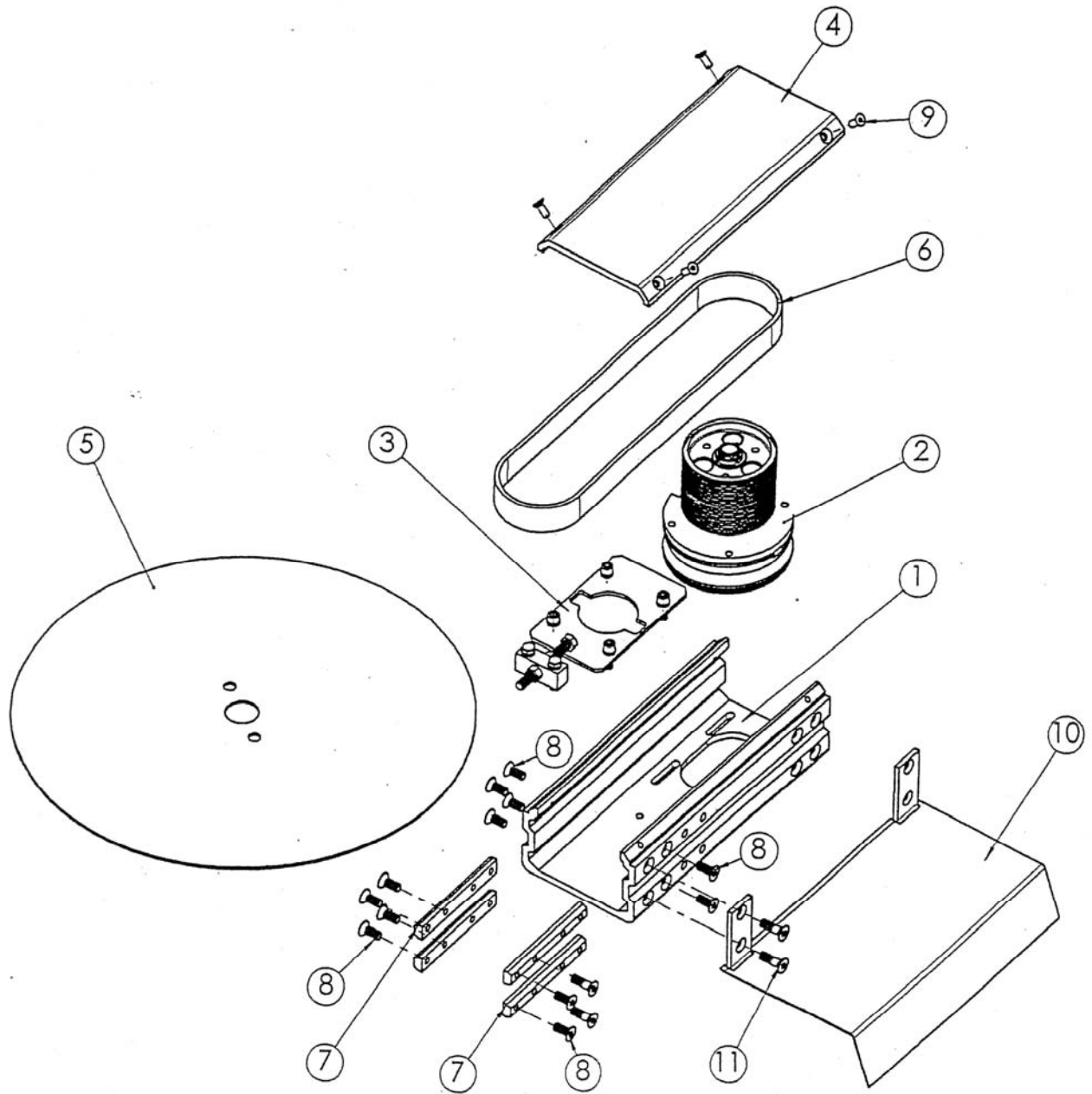


## 2 SECTION EXTENSION

REP.	REF. PIECE	QTE	DESIGNATION
.1	5812.6201	1	Frame
.2	<b>PAGE 7 - 12</b>	1	End plate assembly
.3	5812.0704	1	Interior slice
.4	5812.0705	1	Plated slice
.5	5812.5201	1	Cover
.6	5812.2621	1	Sheet metal deflector 2 blades
.7	<b>PAGE 7 - 18</b>	1	Poly Vee - long shaft assembly
.8	<b>PAGE 7 - 14</b>	1	Poly vee - short shaft assembly
.9	<b>PAGE 7 - 13</b>	1	Motor plate assembly
.10	6531.0107	2	Poly Vee 1397/55.0 L 10
.11	<b>PAGE 7 - 13</b>	1	Belt adjustment assembly
.12	5812.1601	1	Cover for grease tube
.13	5812.1602	1	Cover for short grease tube
.14	6507.5111	4	Washer W 5 ZN
.15	6504.0404	8	Screw FZ M 10 x 25
.16	6503.1110	4	Screw CHC M 5 x 12
.17	7120.0214 } 7120.0215 } 7120.0212 }	2	Blade Ø 600 Blade Ø 650 Blade Ø 700
.18	5812.0401	4	Slice modular element
.19	6504.0503	4	Screw FZ M 12 x 40
.20	6504.0504	12	Screw FZ M 12 x 30

1 SECTION EXTENSION

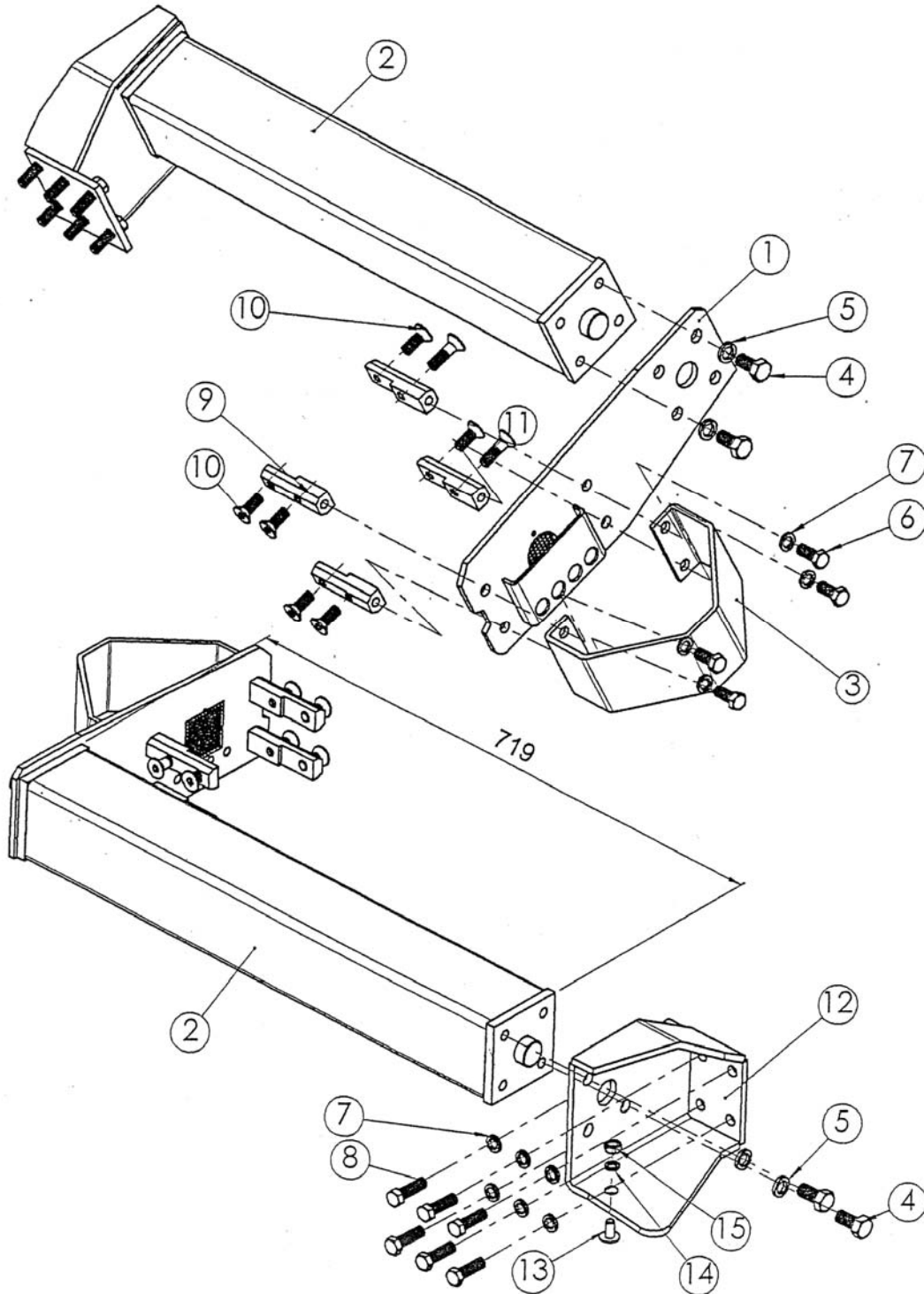
600 DIA Ref. 5812.9013  
650 DIA Ref. 5812.9014  
700 DIA Ref. 5812.9015



## 1 SECTION EXTENSION

REP.	REF. PIECE	QTE	DESIGNATION
.1	5812.6101	1	Frame 1 blade
.2	<b>PAGE 7 - 16</b>	1	Poly Vee - long shaft assembly
.3	<b>PAGE 7 - 13</b>	1	Belt adjustment assembly
.4	5812.5101	1	Cover
.5	7120.0214 } 7120.0215 } 7120.0212 }	1	Blade Ø 600 Blade Ø 650 Blade Ø 700
.6	6531.0107	1	Poly Vee 1397/55.0 L 10
.7	5812.0401	4	Slice modular element
.8	6504.0504	12	Screw FZ M 12 x 30
.9	6504.0404	4	Screw FZ M 10 x 25
.10	5812.2611	1	Sheet metal deflector 1 blade
.11	6504.0503	4	Screw FZ M 12 x 40

MOUNTING ASSEMBLY



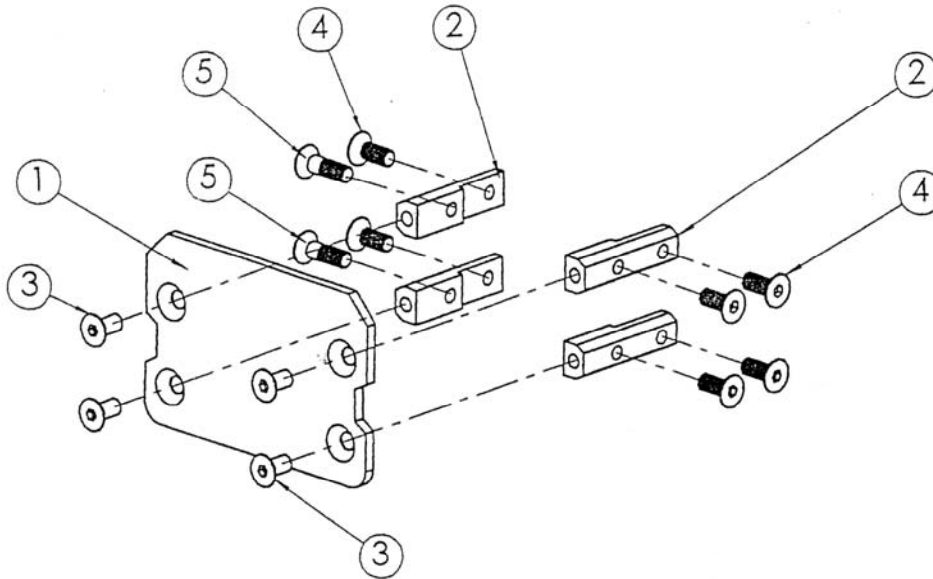


## MOUNTING ASSEMBLY

REP.	REF. PIECE	QTE	DESIGNATION
.1	5812.1001	1	Support tube end plate
.2	5812.1201 } 5812.1203 }	1	Tube to adapt 2 and 3 blades Lg 719 $\varnothing$ 100 Tube to adapt 4 and 5 blades Lg 1369 $\varnothing$ 100
	5812.1214 } 5812.1216 }	1	Tube to adapt 2 and 3 blades Lg 719 $\varnothing$ 70 with support Tube to adapt 4 and 5 blades Lg 1369 $\varnothing$ 70 with support
.3	5812.1401	1	Foot
.4	6502.3601	4	Screw H M 14 x 30
.5	6507.5105	4	Washer W 14
.6	6502.3501	4	Screw H M 12 x 30 ZN
.7	6507.5104	10	Washer W 12
.8	6502.3503	6	Screw H M 12 x 40
.9	5812.0301	4	Slice exterior
.10	6504.0504	6	Screw FZ M 12 x 30
.11	6504.0503	2	Screw FZ M 12 x 40
.12	5812.1101	1	Square support tube
.13	6505.0501	1	Screw roundhead M 10 x 20
.14	6507.5103	1	Washer W 10 ZN
.15	6506.0104	1	Nut H M 10 ZN

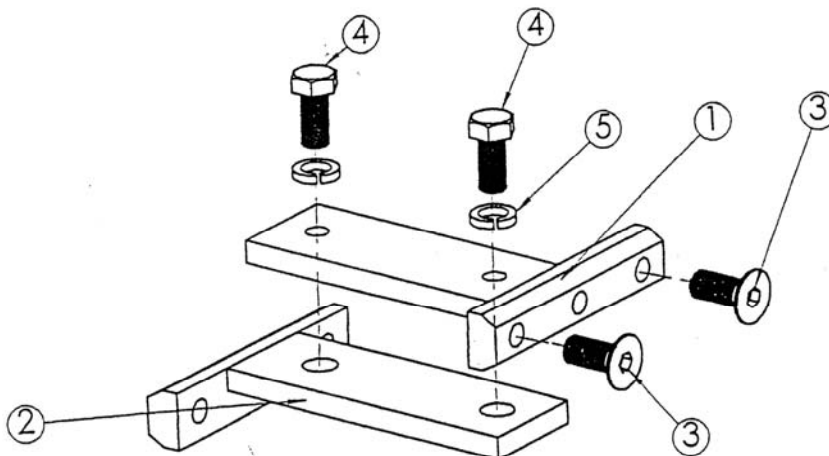
**END PLATE ASSEMBLY  
CONNECTOR ASSEMBLY**

*End plate*



REP	REF. PIECE	QTY	DESIGNATION
.1	5812.1301	1	Plate cp 8
.2	5812.0301	4	Exterior slice
.3	6504.0501	4	Screw FZ M 12 x 25
.4	6504.0504	6	Screw FZ M 12 x 30
.5	6504.0503	2	Screw FZ M 12 x 40

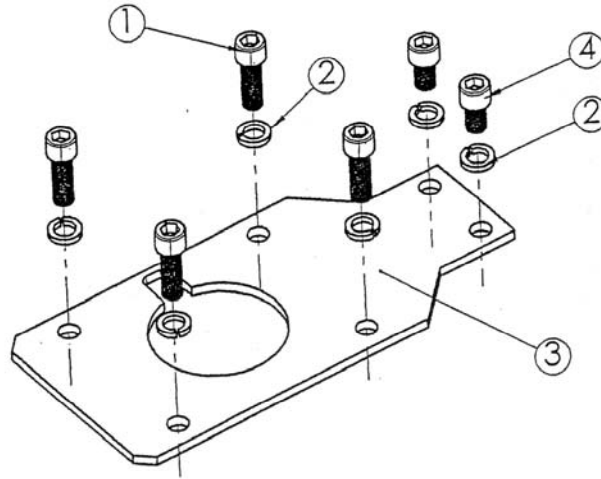
*Connector assembly*



REP	REF. PIECE	QTY	DESIGNATION
.1	5812.0702	1	Bottom connector
.2	5812.0703	1	Top connector
.3	6504.0504	2	Screw FZ M 12 x 30
.4	6502.3507	2	Screw H 12 x 25 ZN
.5	6507.5104	2	Washer W 12

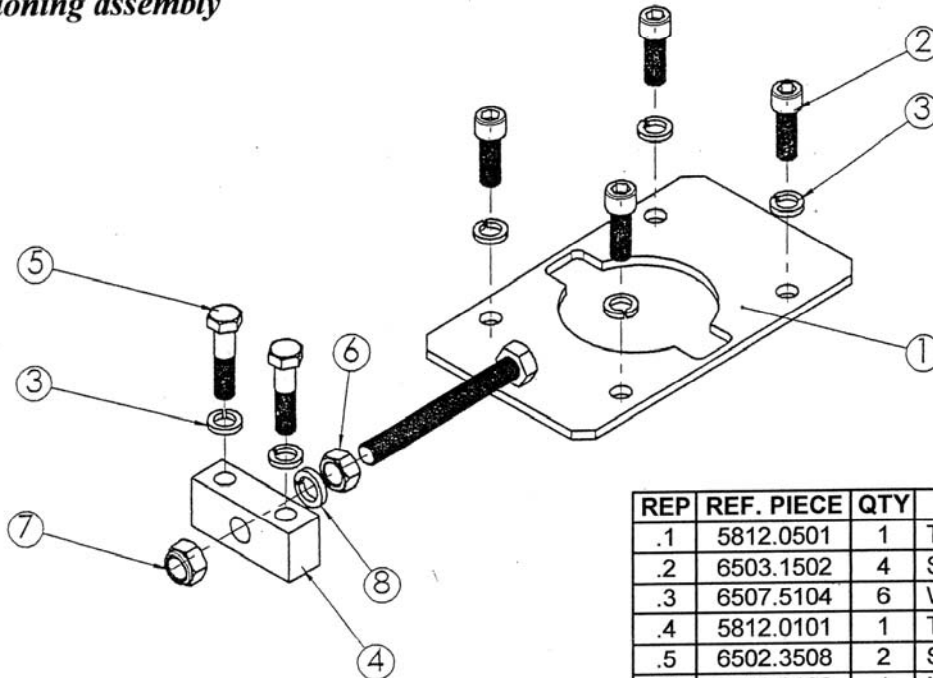
**MOTOR MOUNTING PLATE ASSEMBLY  
BELT TENSIONER ASSEMBLY**

*Motor plate*



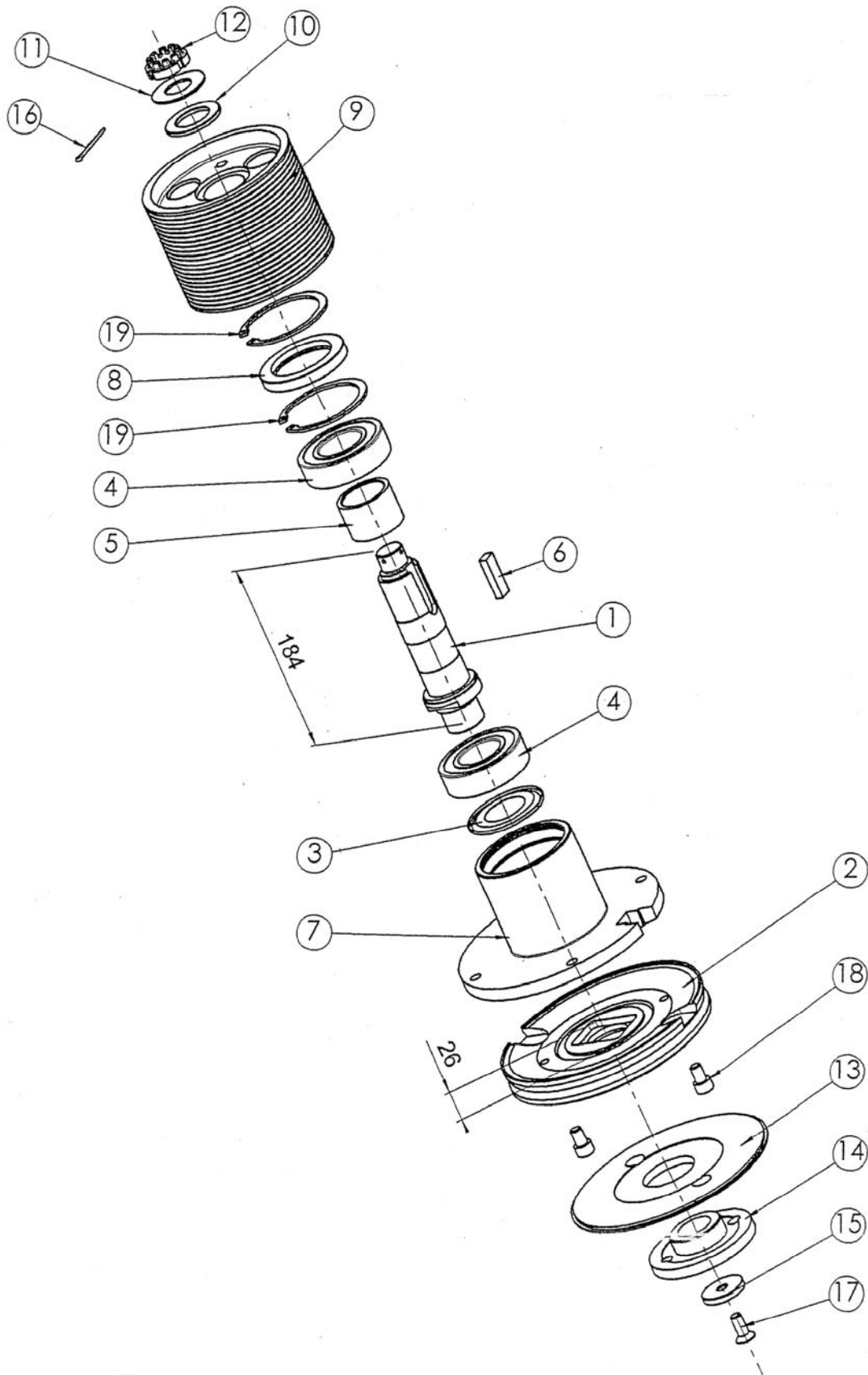
REP	REF.	QTY	DESIGNATION
.1	6503.1502	4	Screw CHC 12 x 35
.2	6507.5104	6	Washer W 12
.3	5812.0601	1	Motor joining plate
.4	6503.1508	2	Screw CHC 12 x 20

*Tensioning assembly*



REP	REF. PIECE	QTY	DESIGNATION
.1	5812.0501	1	Tensioning plate
.2	6503.1502	4	Screw CHC 12 x 35
.3	6507.5104	6	Washer W 12
.4	5812.0101	1	Tensioning block
.5	6502.3508	2	Screw H M 12 x 50
.6	6506.0106	1	Nut H M 14 ZN
.7	6506.2107	1	Locknut M 14
.8	6507.5105	1	Washer W 14

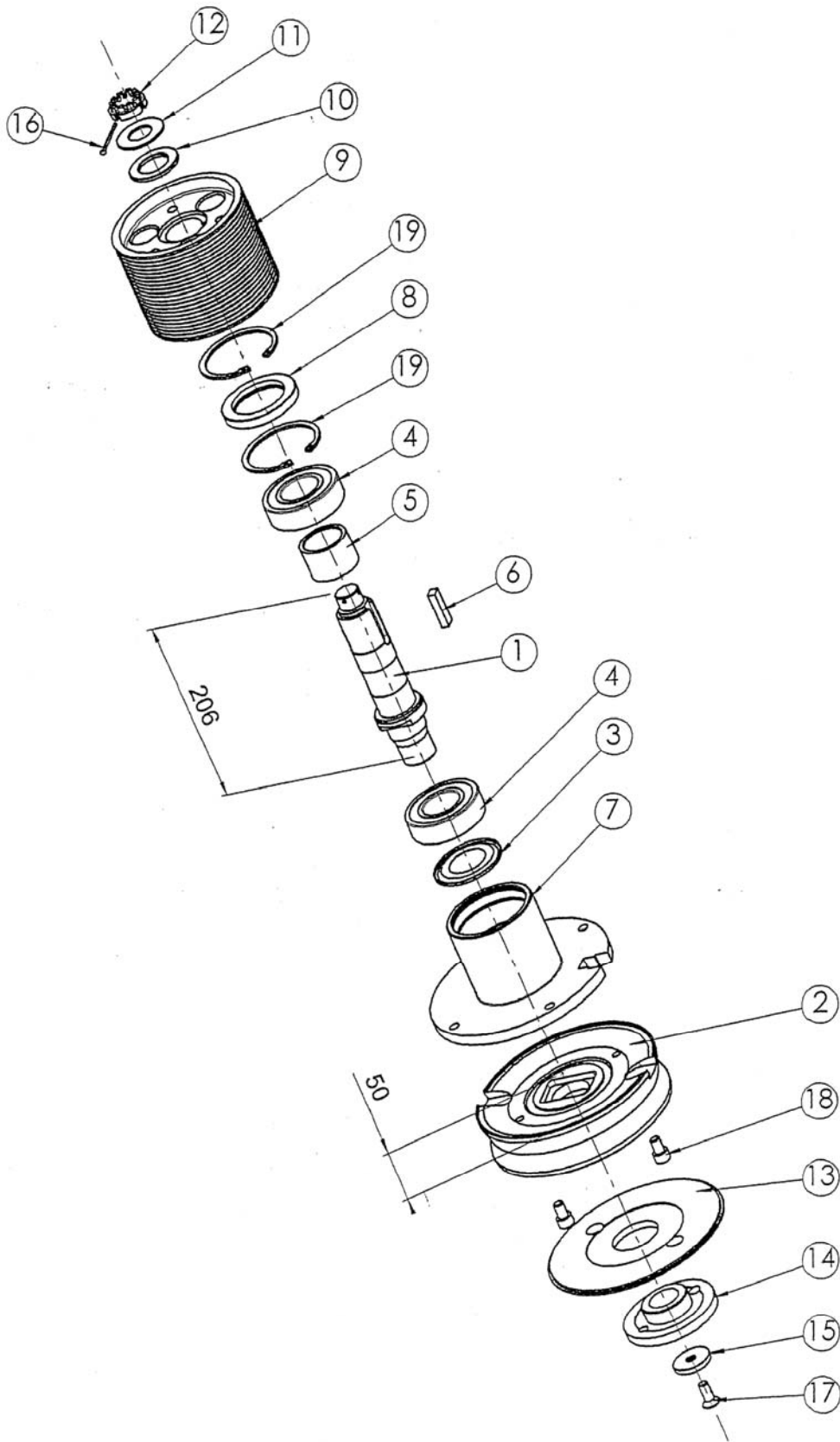
PULLEY ASSEMBLY – SHORT SHAFT



## PULLEY ASSEMBLY – SHORT SHAFT

REP.	REF. PIECE	QTE	DESIGNATION
.1	7010.0322	1	Short shaft
.2	7030.0715	1	Narrow dish
.3	6523.9006	1	Nilos joint 22208 AV
.4	6523.1203	2	Bearing 22208
.5	7050.0119	1	Distance spacer
.6	6512.0305	1	Key 12 x 8 x 40
.7	7020.0511	1	Hub
.8	6523.9101	1	Seal turning 55 x 80 x 10
.9	7160.0141	1	Pulley Poly Vee
.10	6508.0032	1	Support washer
.11	6507.3103	1	Washer 25/50/2
.12	6506.0112	1	Nut
.13	7060.0110	1	Pressure disc
.14	7050.0309	1	Locking nut
.15	6508.0034	1	Round plate Ø 10
.16	6513.3103	1	Split pin V 3 x 40
.17	6504.0404	1	Screw FZ M 10 x 25
.18	6503.1401	2	Screw CHC M 10 x 16
.19	6511.0107	2	Circlips INT Ø 80

PULLEY ASSEMBLY - LONG SHAFT

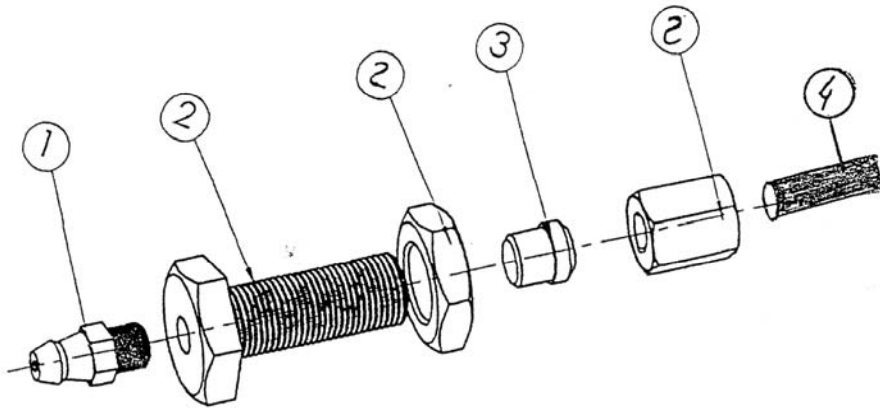


## PULLEY ASSEMBLY – LONG SHAFT

REP.	REF. PIECE	QTE	DESIGNATION
.1	7010.0323	1	Long shaft
.2	7030.0716	1	Wide dish
.3	6523.9006	1	Nilos joint 22208 AV
.4	6523.1203	2	Bearing 22208
.5	7050.0119	1	Distance spacer
.6	6512.0305	1	Key 12 x 8 x 40
.7	7020.0511	1	Hub
.8	6523.9101	1	Seal turning 55 x 80 x 10
.9	7160.0141	1	Pulley Poly Vee
.10	6508.0032	1	Support washer
.11	6507.3103	1	Washer 25/50/2
.12	6506.0112	1	Nut
.13	7060.0110	1	Pressure disc
.14	7050.0309	1	Locking nut
.15	6508.0034	1	Round plate Ø 10
.16	6513.3103	1	Split pin V 3 x 40
.17	6504.0404	1	Screw FZ M 10 x 25
.18	6503.1401	2	Screw CHC M 10 x 16
.19	6511.0107	2	Circlips INT Ø 80

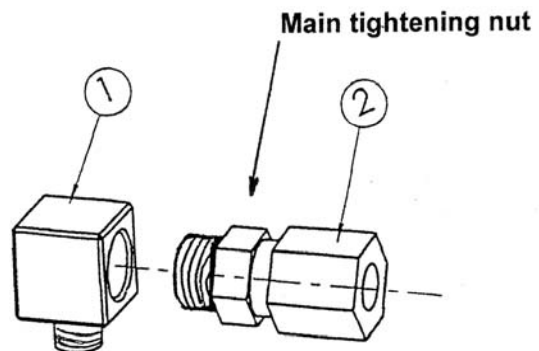
**BULKHEAD FITTING - LUBRICATION  
ADAPTOR - LUBRICATION**

*Bulkhead Crossing Piece, Grease*



REP	REF. PIECE	QTY	DESIGNATION
.1	6544.2006	1	Straight grease nipple M 6
.2	6544.2005	1	Hollow connector Ø 6
.3	6544.2007	1	Olive
.4	6544.2009	/M	Tube rilsan 3/6 (greasing)

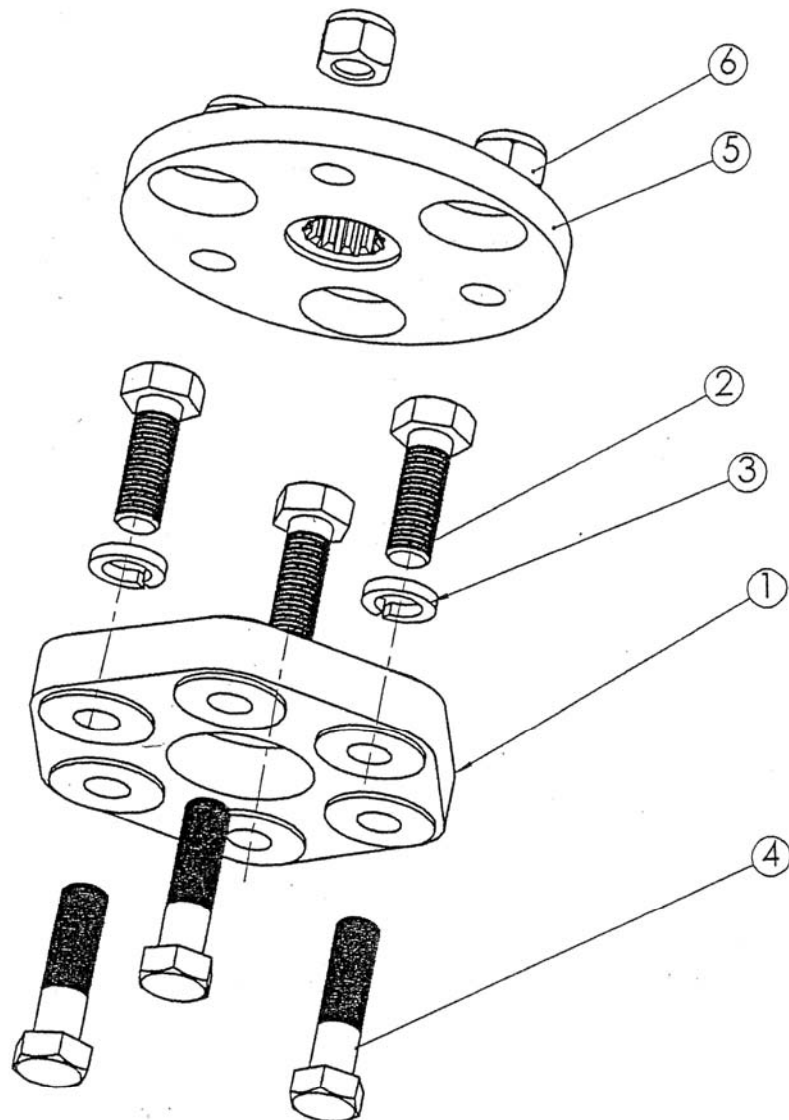
*Connecting assembly*



REP	REF. PIECE	QTY	DESIGNATION
.1	6544.2003	1	Connector M6 x 100
.2		1	End of flexible pipe piece

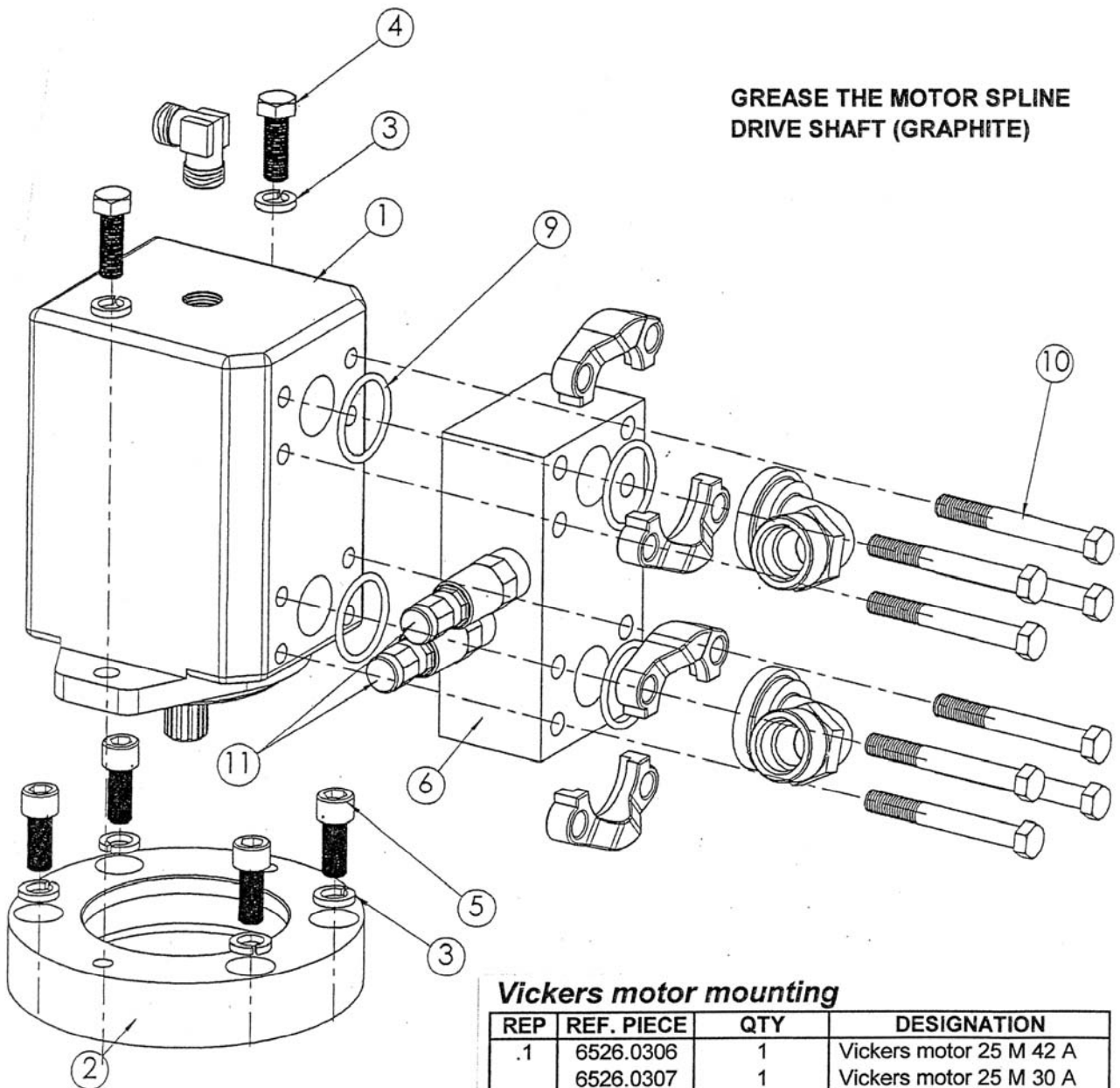


## COUPLING ASSEMBLY



REP	REF. PIECE	QTY	DESIGNATION
.1	6522.3103	1	Straflex coupling
.2	6502.3502	3	Screw H M 12 x 35
.3	6507.5104	3	Washer W 12
.4	6502.1410	3	Screw H M 12 x 45
.5	7010.0129	1	1/2 coupling grooved
.6	6506.2106	3	Nut M 12 Nylock

MOTOR ASSEMBLY



GREASE THE MOTOR SPLINE  
DRIVE SHAFT (GRAPHITE)

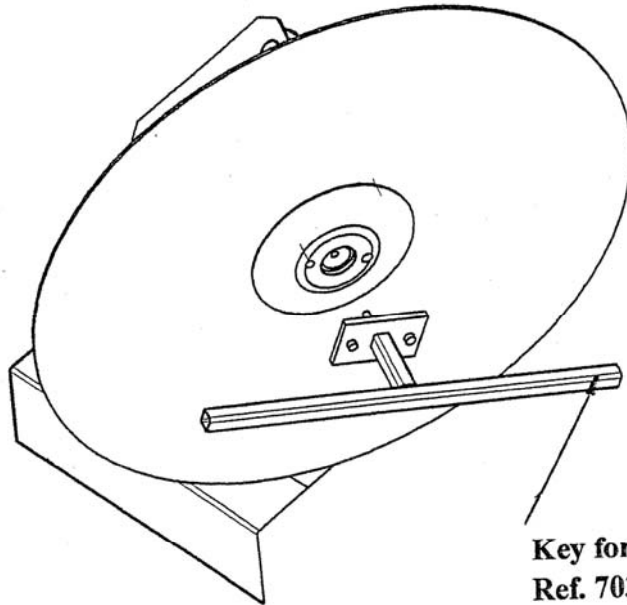
**Vickers motor mounting**

REP	REF. PIECE	QTY	DESIGNATION
.1	6526.0306	1	Vickers motor 25 M 42 A
	6526.0307	1	Vickers motor 25 M 30 A
.2	7050.0121	1	Motor spacer
.3	6507.5104	6	Washer W 12
.4	6502.3502	2	Screw H M 12 x 35
.5	6503.1501	4	Screw CHC 12 x 30
.6	6017.0109	1	Pressure limiter block
.9	6014.5203	4	Ring joint 1"1/4
.10	6502.6404	8	Screw H UNC 7/16 Lg 3"1/2
.11	6017.0111	2	Cartridge limiter RV 5

**Denison motor mounting**

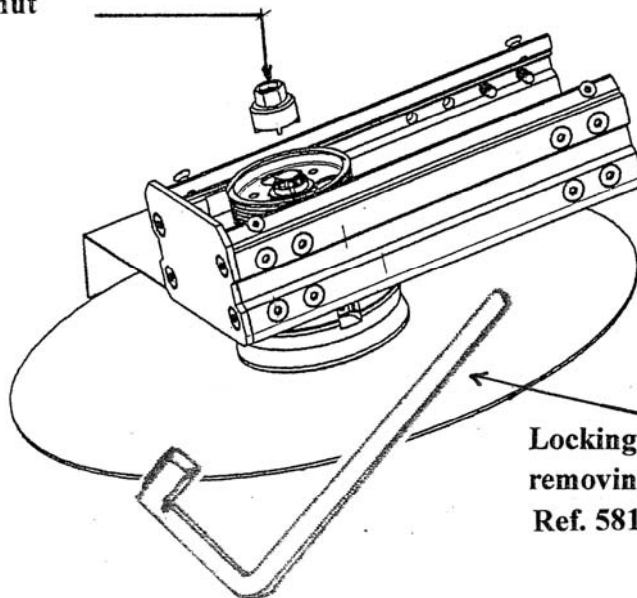
REP	REF. PIECE	QTY	DESIGNATION
.1	6526.0502	1	Denison motor M5BS045
	6526.0503	1	Denison motor M5BS035
.6	6017.0116	1	Pressure limiter block

SPECIAL TOOLS



Key for tightening blades  
Ref. 7030.0316

Key for castellated nut  
Ref. 7030.0317



Locking key for use when  
removing blade  
Ref. 5812.2401

**SAW BLADES  
BEARING MOUNTINGS**

*1 saw blade* Ø 600 (96 teeth)

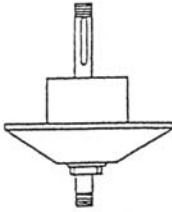
7120.0214

*1 saw blade* Ø 650 (96 teeth)

7120.0215

*1 saw blade* Ø 700 (96 teeth)

7120.0212



*1 BEARING MOUNTING COMPLETE : SHORT SHAFT*

7020.0513

*1 BEARING MOUNTING COMPLETE : LONG SHAFT*

7020.0514

**77.465.01 DECAL SCHEDULE**

05.227.01	HAMMER DRIVE SCREW	2
05.774.07	SERIAL NUMBER PLATE	1
45645.02	DECAL - BOMFORD	2