

PM1741

**B578**  
**ARM MOWER**

PARTS MANUAL

ISSUE 7

## IMPORTANT

NOTE HERE THE SERIAL NUMBER OF YOUR MACHINE AND ALWAYS QUOTE IT IN ANY COMMUNICATION WITH US OR YOUR DEALER. THIS IS PARTICULARLY IMPORTANT WHEN ORDERING SPARES. REMEMBER TO INCLUDE ALL NUMBERS AND LETTERS.

MACHINE SERIAL NUMBERS \_\_\_\_\_

THE INFORMATION GIVEN THROUGHOUT THIS MANUAL IS CORRECT AT THE TIME OF PUBLICATION. HOWEVER, IN THE COURSE OF CONSTANT DEVELOPMENT OF BOMFORD TURNER MACHINES, CHANGES IN SPECIFICATION ARE INEVITABLE. SHOULD YOU FIND THE INFORMATION GIVEN IN THIS BOOK TO BE AT VARIANCE WITH THE MACHINE IN YOUR POSSESSION, YOU ARE ADVISED TO CONTACT THE BOMFORD TURNER SERVICE DEPARTMENT WHERE UP-TO-DATE INFORMATION WILL BE PROVIDED.

THE MANUAL CAN CONTAIN STANDARD AND OPTIONAL FEATURES AND IS NOT TO BE USED AS A MACHINE SPECIFICATION.

THE MACHINE HAS BEEN TESTED AND IS CONSIDERED SAFE IF CAREFULLY USED. ENSURE YOUR OPERATOR IS PROPERLY TRAINED IN ITS USE AND MAINTENANCE.

---

## IMPORTANT

NOTEZ ICI LES NUMEROS DE SERIE DE VOTRE MACHINE ET MENTIONNEZ LES DANS TOUTE COMMUNICATION AVEC NOS SERVICES OU VOTRE REVENDEUR. CECI EST IMPORTANT POUR LA COMMANDE DE PIECES DETACHEES. PENSEZ A NOTER TOUS LES NUMEROS ET TOUTES LES LETTERS.

NUMEROS DE SERIE DE LA MACHINE \_\_\_\_\_

LES INFORMATIONS DONNEES DANS CE MANUEL SONT CORRECTES CEPENDANT, DU FAIT DE DEVELOPPEMENT CONSTANT DES MACHINES BOMFORD TURNER.

CHANGEMENTS DANS LES CARACTERISTIQUES SONT INEVITABLES.

SI VOUS TROUVEZ QUE LES INFORMATIONS DONNEES NE CORRESPONDENT PAS A VOTRE MACHINE VEUILLEZ CONTACTER LE SERVICE DES REPARATIONS OU DES INFORMATIONS PLUS RECENTES VOUS SERONT DONNEES. CE MANUEL PEUT MONTRER DES CARACTERISTIQUES OPTIONNELLES ET NE PEUT PAS ETRE CONSIDERE COMME SPECIFICATION DE LA MACHINE.

CETTE MACHINE A ETE TESTEE, ET ELLE EST CONSIDEREE COMME FIABLE A CONDITION D'UNE BONNE UTILISATION. ASSUREZ-VOUS QUE VOTRE OPERATEUR EST QUALIFIE EN CE QUI CONCERNE L'UTILISATION DE LA MACHINE AINSI QUE SON ENTRETIEN.

---

## WICHTIG

TRAGEN SIE HIER DIE SERIENNUMMERN IHRER MASCHINE EIN UND GEBEN SIE DIESE IMMER AN, WENN SIE SICH AN UNS ODER IHREN HÄNDLER WENDEN. DAS IST BESONDERS BEI ERSATZTEILBESTELLUNGEN WICHTIG. VERGESSEN SIE NICHT, ALLE ZAHLEN UND BUCHSTABEN ZU NOTIEREN.

SERIENNUMMERN DER MASCHINE \_\_\_\_\_

DIE ANGABEN IN DIESEM HANDBUCH SIND BEI VERÖFFENTLICHUNG KORREKT. AUFGRUND DER KONSTANTEN WEITERENTWICKLUNG VON BOMFORD TURNER MASCHINEN SIND JEDOCH ÄNDERUNGEN IN DER SPEZIFIKATION UNVERMEIDLICH. WENN DIE INFORMATION IN DIESEM HANDBUCH NICHT MIT IHRER MASCHINE ÜBEREINSTIMMEN, NEHMEN SIE BITTE KONTAKT MIT DER BOMFORD TURNER KUNDENDIENSTABTEILUNG AUF, DIE IHNEN GERNE DIE AKTUELLEN INFORMATION ZUKOMMEN LÄSST.

DAS HANDBUCH KANN SOWOHL BESCHREIBUNGEN FÜR DIE STANDARD AUSFÜHRUNG ALS AUCH FÜR ZUBEHÖR ENTHALTEN UND IST NICHT ALS MASCHINENSPEZIFIKATION ZU VERWENDET.

DIE MASCHINE IST GETESTET UND BEI SACHGEMÄSSEM BETRIEB ALS SICHER BEFUNDEN WORDEN. SORGEN SIE DAFÜR, DASS IHR BEDIENPERSONAL IN ANWENDUNG UND WARTUNG RICHTIG GESCHULT WIRD.

## B578 ARM MOWER

PAGE ILLUSTRATION NUMBERS SHOWN ARE USED ONLY FOR REFERENCE PURPOSES AND SHOULD NOT BE USED FOR ORDERING SPARE PARTS.

PLEASE ENSURE THAT CORRECT PART NUMBER AND DESCRIPTION IS GIVEN WHEN ORDERING SPARE PARTS.

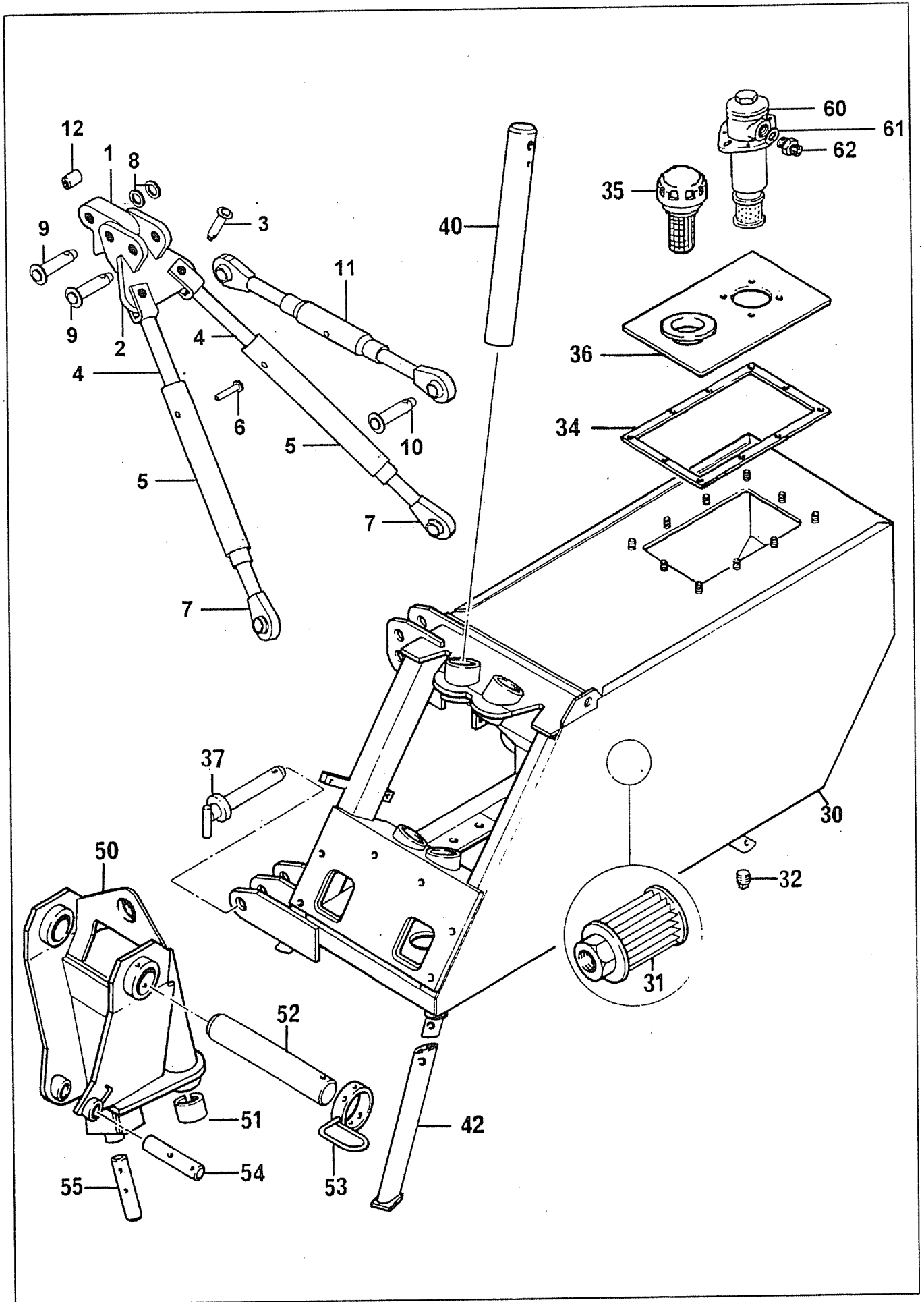
Page No.	Title
2 - 1 TO 2 - 3	3 POINT LINKAGE FILTER ASSEMBLY MAINFRAME KINGPOST
3 - 1 TO 3 - 4	FIRST ARM SECOND ARM COWL BRACKET
4 - 1 TO 4 - 2	DISC SPRING BREAKOUT
5 - 1 TO 5 - 3	SINGLE PUMP AND GEARBOX ASSEMBLY
6 - 1 TO 6 - 5	TWIN PUMPS AND GEARBOX ASSEMBLIES
7 - 1 TO 7 - 2	CONTROL VALVE ASSEMBLY - CABLE
8 - 1 TO 8 - 2	REMOTE CONTROL ASSEMBLY - CABLE
9 - 1 TO 9 - 2	CONTROL VALVE ASSEMBLY - ELECTRIC
10-1 TO 10-4	REMOTE CONTROL ASSEMBLY - ELECTRIC CONTROL BOX EPP I & EPP II
11-1 TO 11-6	RAM CIRCUIT HYDRAULIC BREAKOUT ACCUMULATOR KIT
12-1 TO 12-6	DECALS

### IMPORTANT

**THIS MACHINE IS DESIGNED FOR VEGETATION CONTROL AND MUST NOT BE USED FOR ANY OTHER PURPOSE**

**IT IS POTENTIALLY HAZARDOUS TO FIT OR USE ANY PARTS OTHER THAN GENUINE BOMFORD TURNER PARTS**

**THE COMPANY DISCLAIMS ALL LIABILITY FOR THE CONSEQUENCES OF SUCH USE, WHICH IN ADDITION VOIDS THE MACHINE WARRANTY**



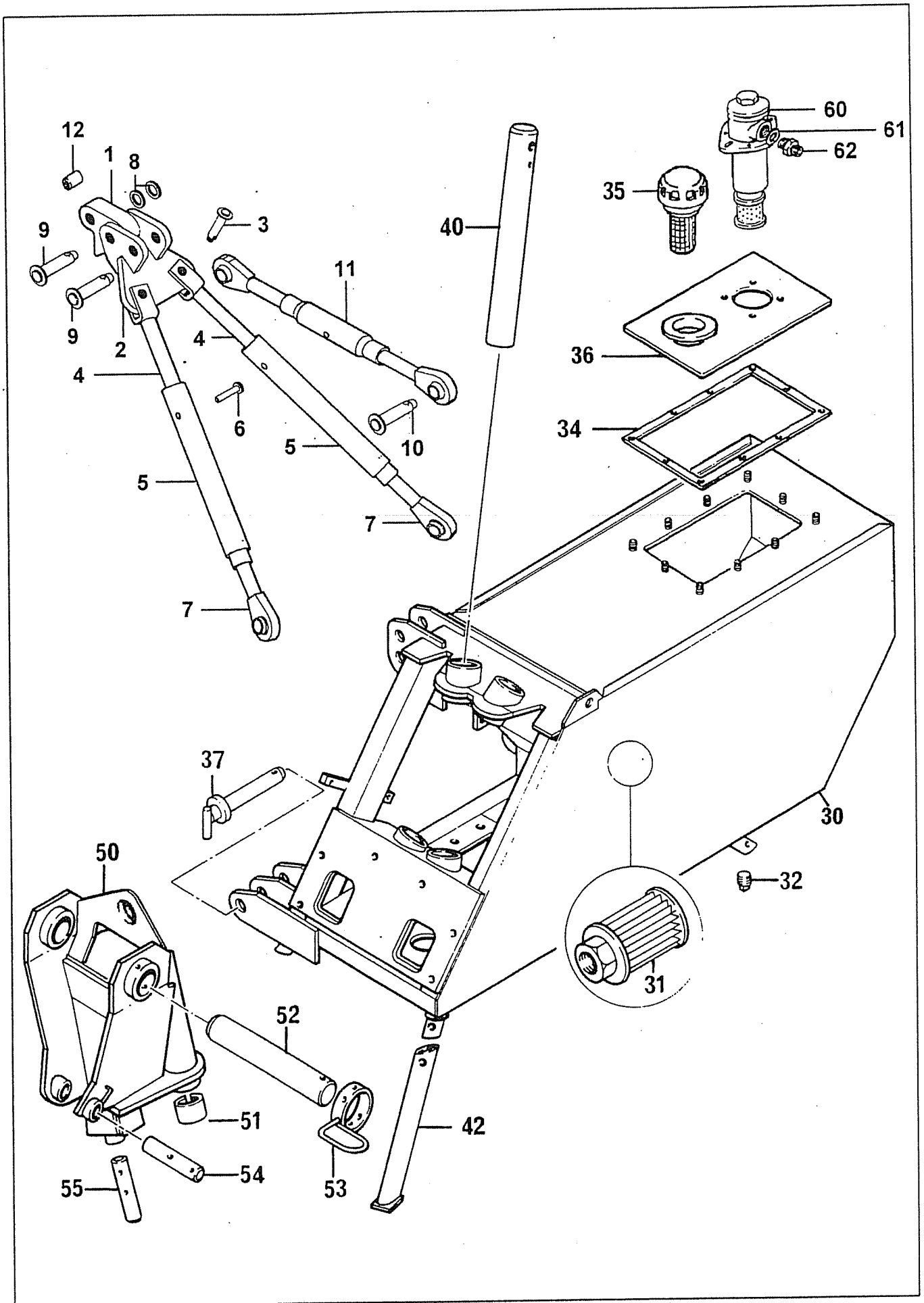
REF	PART NO	DESCRIPTION	QTY
<b>76.458.01 LINKAGE SCHEDULE</b>			
*01	42411.01	PLATE 40 - 138 X 119	1
+01	42280.01	PLATE 40 - 138 X 119	1
+01	42441.01	PLATE 40 - 158 X 118	1
02	42276.01	BRACKET	1
03	03.652.12	PIN DIA 20 X 65 LG	2
03	05.201.11	TENSION PIN 5MM X 45MM PLATED	2
03	05.281.05	FLAT WASHER 20MM PLATED	2
04	42317.01	ROD INNER	2
05	42316.01	TUBE OUTER	2
06	05.964.01	SPRING COTTER 3.6MM DIA	2
06	42315.01	BRT RND 12 DIA X 68	2
07	07.731.01	BALL END - A-FRAME	2
08	42452.01	CDS 1 1/2 X 1 1/32 - 5PLATED	2
09	00.372.01	LINCH PIN	2
09	03.873.01	PIN 1"DIA X 140MM	2
10	00.372.01	LINCH PIN	1
10	42250.01	PIN - CATII TOP LINK	1
11	07.584.02	TOP LINK - HEAVY DUTY	1

+ *Dependent on tractor make/model*

#### 74.803.01 FILTER ASSEMBLY

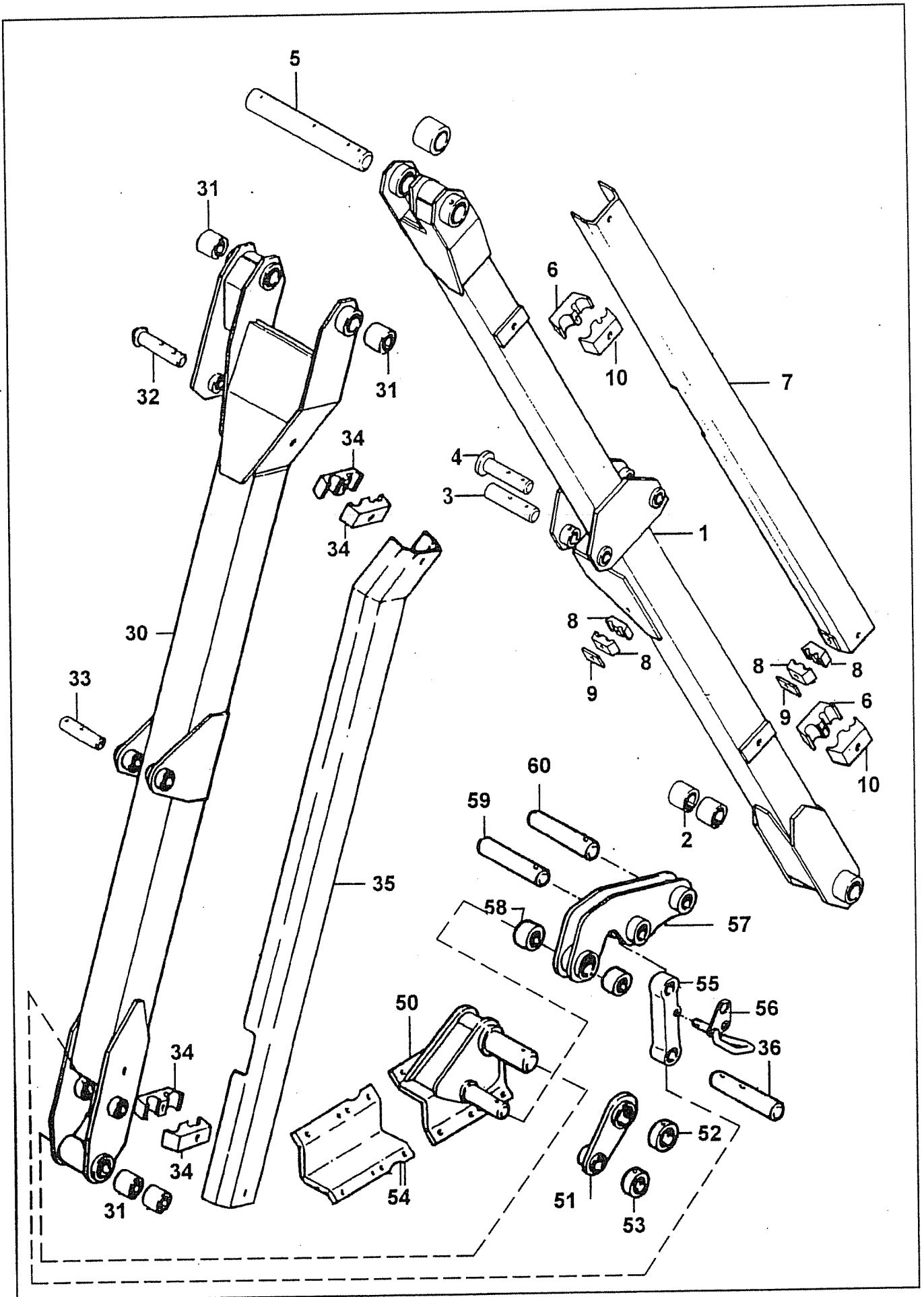
60	05.264.01	SETSCREW M8 X 20MM PLATED	4
60	05.282.01	SPRING WASHER 8MM PLATED	4
60	41.041.01	FILTER	1
*60	41.041.02	ELEMENT	-
61	05.290.08	BONDED SEAL 1.1/4"BSP	1
62	05.131.01	ADAPTOR 1" X 1.1/4" BSP	1

\*MAIN PART IN GROUP, RELATED PARTS HAVE SAME REFERENCE NUMBER



REF	PART NO	DESCRIPTION	QTY
<b>72.043.04/72.044.04 MAINFRAME ASSY</b>			
30	02.717.02	PLUG PLASTIC 50MM	2
30	05.227.01	HAMMER DRIVE SCREW NO.6 X 3/8"	2
30	05.264.32	SETSCREW M16 X 25MM PLATED	6
30	05.281.01	FLAT WASHER 8MM PLATED	10
30	05.282.03	SPRING WASHER 12MM PLATED	2
30	05.282.04	SPRING WASHER 16MM PLATED	6
30	05.286.01	NUT M8 PLATED	10
30	05.286.03	NUT M12 PLATED	3
30	05.292.23	BOLT M12 X 100MM PLATED	1
30	05.292.25	BOLT M12 X 120MM PLATED	1
30	05.774.06	SERIAL NO.PLATE BOMFORD TURNER	1
*30	07.948.03	MAINFRAME LH	1
30	07.948.04	MAINFRAME RH	1
31	05.367.02	FILTER - SUCTION	1
32	05.495.01	PLUG 1/2" BSPT	-
34	08.605.01	GASKET	1
35	06.966.02	FILLER BREATHER CAP & STRAINER	2
36	41.255.01	PLATE - FILLER/FILTER	1
37	00.372.01	LINCH PIN	2
37	07.574.01	PIN - 1.1/8" X 172MM	4
*40	03.657.22	PIN - 50 DIA X 555	1
40	05.282.03	SPRING WASHER 12MM PLATED	1
40	05.286.03	NUT M12 PLATED	1
40	05.292.22	BOLT M12 X 90MM PLATED	1
*42	07.921.01	STAND	4
42	11.192.91	PIN - LOCKING 3/8" DIA	4
<b>72.083.0272.084.02 BRACKET - KINGPOST</b>			
50	05.953.04	GREASE NIPPLE M10 90 DEG	1
*50	09.511.01	BRACKET - KINGPOST LH	1
50	09.511.02	BRACKET - KINGPOST RH	1
51	02.771.02	TENSION BUSH 55 X 50 X 50	2
*52	03.657.21	PIN 50 DIA X 340	1
52	05.282.03	SPRING WASHER 12MM PLATED	1
52	05.286.03	NUT M12 PLATED	1
52	05.292.24	BOLT M12 X 110MM PLATED	1
53	07.943.01	BRACKET - HOSE GUIDE	1
*54	03.654.44	PIN 30 DIA X 160	1
54	05.201.07	TENSION PIN 8MM X 45MM PLATED	1
54	05.953.01	GREASE NIPPLE M6	1
*55	03.653.41	PIN - 25 DIA X 154	1
55	05.201.07	TENSION PIN 8MM X 45MM PLATED	1
55	05.953.01	GREASE NIPPLE M6	1

\*MAIN PART IN GROUP, RELATED PARTS HAVE SAME REFERENCE NUMBER

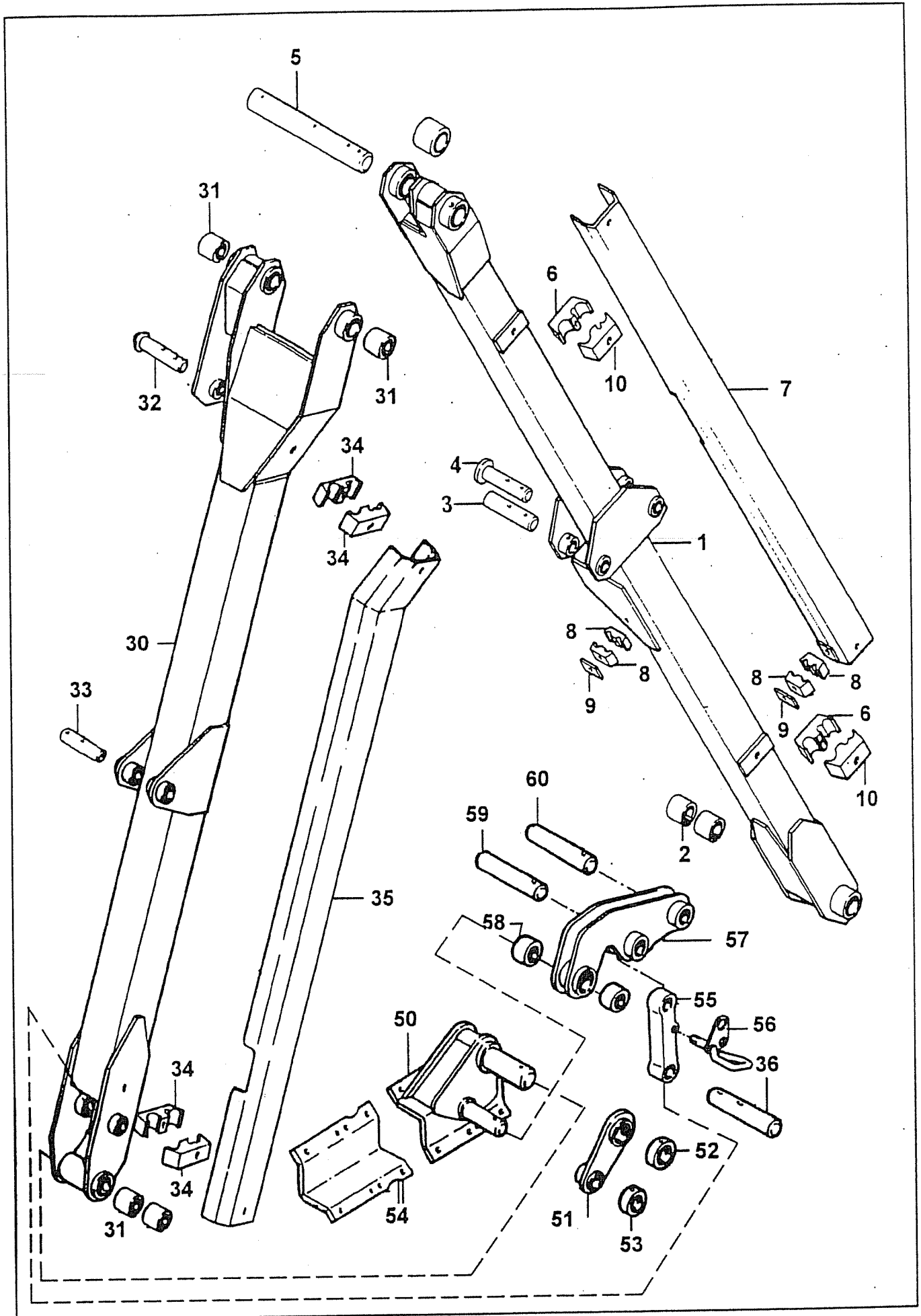




REF	PART NO	DESCRIPTION	QTY
72.031.03/04 ARM - FIRST			
01	05.953.04	GREASE NIPPLE M10 90 DEG	1
*01	09.455.01	ARM - FIRST	1
02	08.297.01	BUSH - PLASTIC 60 X 50 X 50	2
*03	03.654.43	PIN 30 DIA X 140	1
03	05.953.01	GREASE NIPPLE M6	1
*04	03.653.31	PIN 25 DIA X 120	1
04	05.201.07	TENSION PIN 8MM X 45MM PLATED	2
04	05.953.01	GREASE NIPPLE M6	1
05	03.068.01	SPECIAL SETSCREW M12 X 25	2
*05	03.656.39	PIN - 40 DIA X 374	1
05	05.282.03	SPRING WASHER 12MM PLATED	2
05	05.292.11	BOLT M10 X 80MM PLATED	1
05	05.953.01	GREASE NIPPLE M6	2
05	07.942.01	WASHER - M12 SPECIAL	2
*06	04.282.09	STUD M10 X 85MM	2
06 ▲	04.282.84	STUD M10 X 95MM	2
06	05.281.02	FLAT WASHER 10MM PLATED FORM C	2
06	05.282.02	SPRING WASHER 10MM PLATED	2
06	05.286.02	NUT M10 PLATED	2
06	06.430.10	CLAMP HOSE	4
06 ▲	06.430.19	CLAMP LOWER HP HOSES	2
07	41770.01	GUARD - COVER	1
*08	04.282.66	STUD - M10 X 56	2
08	05.281.02	FLAT WASHER 10MM PLATED FORM C	2
08	05.282.02	SPRING WASHER 10MM PLATED	2
08	05.286.02	NUT M10 PLATED	2
08	06.430.02	CLAMP HOSE 14 X 14	4
09	06.418.06	CLAMP PLATE 48 X 6	2
10 ▲	30.217.76	HOSE TWIN CLAMP	2

▲ DSR machines

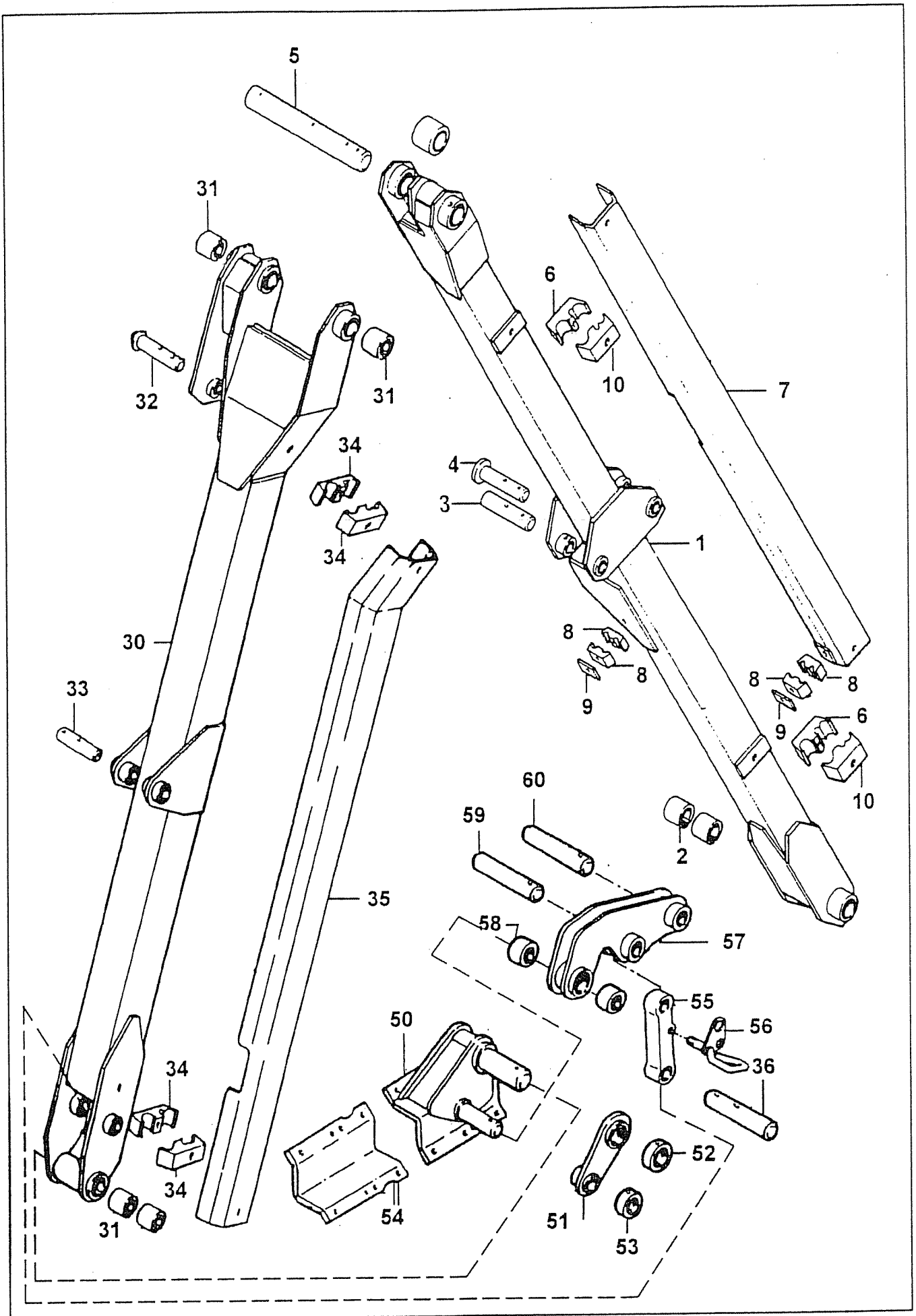
\*MAIN PART IN GROUP, RELATED PARTS HAVE SAME REFERENCE NUMBER



REF	PART NO	DESCRIPTION	QTY
<b>76.135.01/76.136.02 ARM - SECOND</b>			
30	05.953.04	GREASE NIPPLE M10 90 DEG	1
*30	41462.01	ARM - SECOND LH	1
30	41462.02	ARM - SECOND RH	1
31	08.297.02	BUSH - PLASTIC 47 X 40 X 40	5
*32	03.653.39	PIN 25 DIA X 128	1
32	05.201.07	TENSION PIN 8MM X 45MM PLATED	1
32	05.953.01	GREASE NIPPLE M6	1
*33	03.653.58	PIN - DIA 25 X 138	1
33	05.201.07	TENSION PIN 8MM X 45MM PLATED	1
34	04.282.09	STUD M10 X 85MM	2
34	05.281.02	FLT WASHER 10MM PLATED FORM C	2
34	05.282.02	SPRING WASHER 10MM PLATED	2
34	05.286.02	NUT M10 PLATED	2
*34	06.430.10	CLAMP HOSE	4
34 ▲	30.217.76	HOSE TWIN CLAMP	1
35	41465.01	GUARD - HOSE SECOND ARM	1
*36	03.654.60	PIN - DIA 30 X 164	1
36	05.201.07	TENSION PIN 8MM X 45MM PLATED	1
37 ▲	04.282.84	STUD M10 X 95MM	1
37 ▲	05.281.02	FLAT WASHER 10MM	1
37 ▲	05.282.02	SPRING WASHER 10MM	1
37 ▲	05.286.02	NUT M10	1
38 ▲	06.430.19	HOSE CLAMP HP HOSES	1

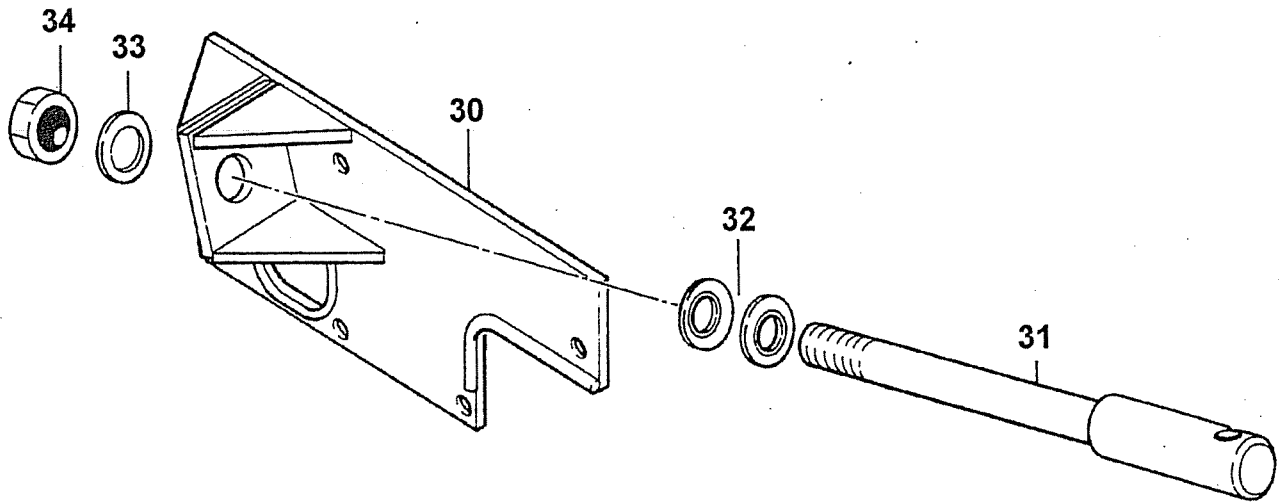
▲ DSR machines

\*MAIN PART IN GROUP, RELATED PARTS HAVE SAME REFERENCE NUMBER



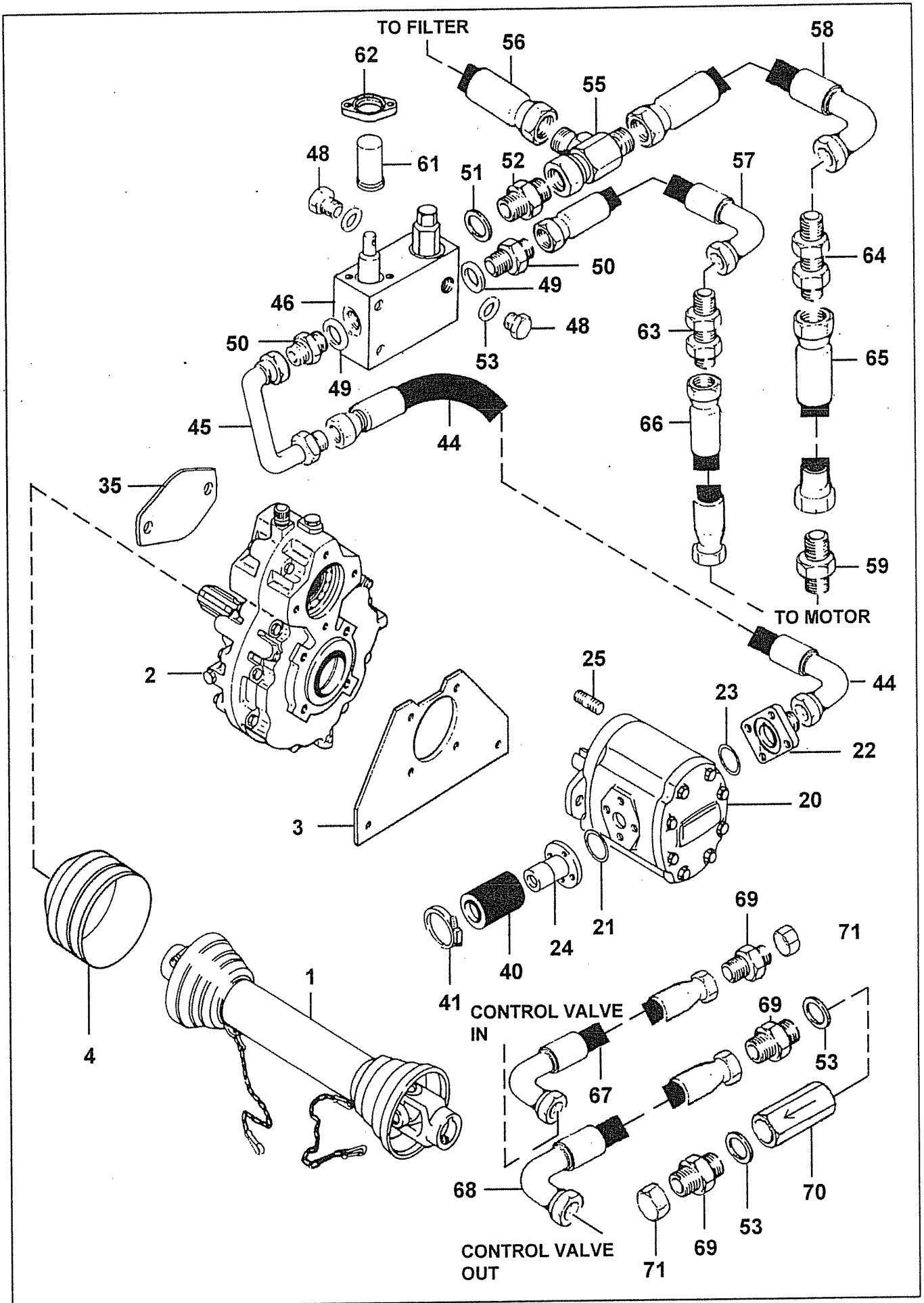
REF	PART NO	DESCRIPTION	QTY
<b>72.822.01 COWL BRKT AND LINKAGE</b>			
*50	09.784.01	BRACKET - COWL LH	1
50	09.784.02	BRACKET - COWL RH	1
51	09.783.01	BRACKET - SUPPORT	1
*52	03.837.01	SPACER 55 X 40.5 X 20 PLATED	1
52	05.282.02	SPRING WASHER 10MM PLATED	1
52	05.287.02	SELF-LOCKING NUT M10 PLATED	1
52	05.291.19	BOLT M10 X 70MM PLATED	1
53	05.287.02	SELF-LOCKING NUT M10 PLATED	1
53	05.291.18	BOLT M10 X 65 PLATED	1
*53	09.795.01	COLLAR - 35 X 20 (ZINC PLATED)	1
54	05.264.25	SETSCREW M12 X 40MM PLATED	6
54	05.282.03	SPRING WASHER 12MM PLATED	6
54	05.286.03	NUT M12 PLATED	6
*54	07.947.01	CLAMP - COWL BRACKET	1
55	05.953.01	GREASE NIPPLE M6	1
55	05.953.05	GREASE NIPPLE M6 X 90DEG	1
*55	09.786.01	LINK	1
56	05.282.04	SPRING WASHER 16MM PLATED	1
56	05.286.04	NUT M16 PLATED	1
*56	09.794.01	BRACKET - HOSE LH	1
57	41.040.02	BRACKET - HOSE RH	1
57	05.953.03	GREASE NIPPLE M10	1
*57	09.785.01	BRACKET - COWL LINK	1
58	08.297.05	PLASTIC BUSH - 42 X 35 - 30	2
*59	03.654.59	PIN - DIA 30 X 128	1
59	05.201.07	TENSION PIN 8MM X 45MM PLATED	1
60	03.653.59	PIN - DIA 25 X 128	1
*60	05.201.07	TENSION PIN 8MM X 45MM PLATED	1

\*MAIN PART IN GROUP, RELATED PARTS HAVE SAME REFERENCE NUMBER



REF	PART NO	DESCRIPTION	QTY
		<b>72.098.01 BREAKOUT - DISC SPRING</b>	
*30	08.195.01	BRACKET-SPRING BREAKOUT LH	1
30	08.195.02	BRACKET-SPRING BREAKOUT RH	1
31	08.196.01	ROD - SPRING BREAKOUT	1
32	30.214.47	DISC SPRING (60 X 30.5 X 3)	63
33	05.281.18	FLAT WASHER 30MM - PLATED	1
34	05.287.07	SELF-LOCKING NUT M30	1

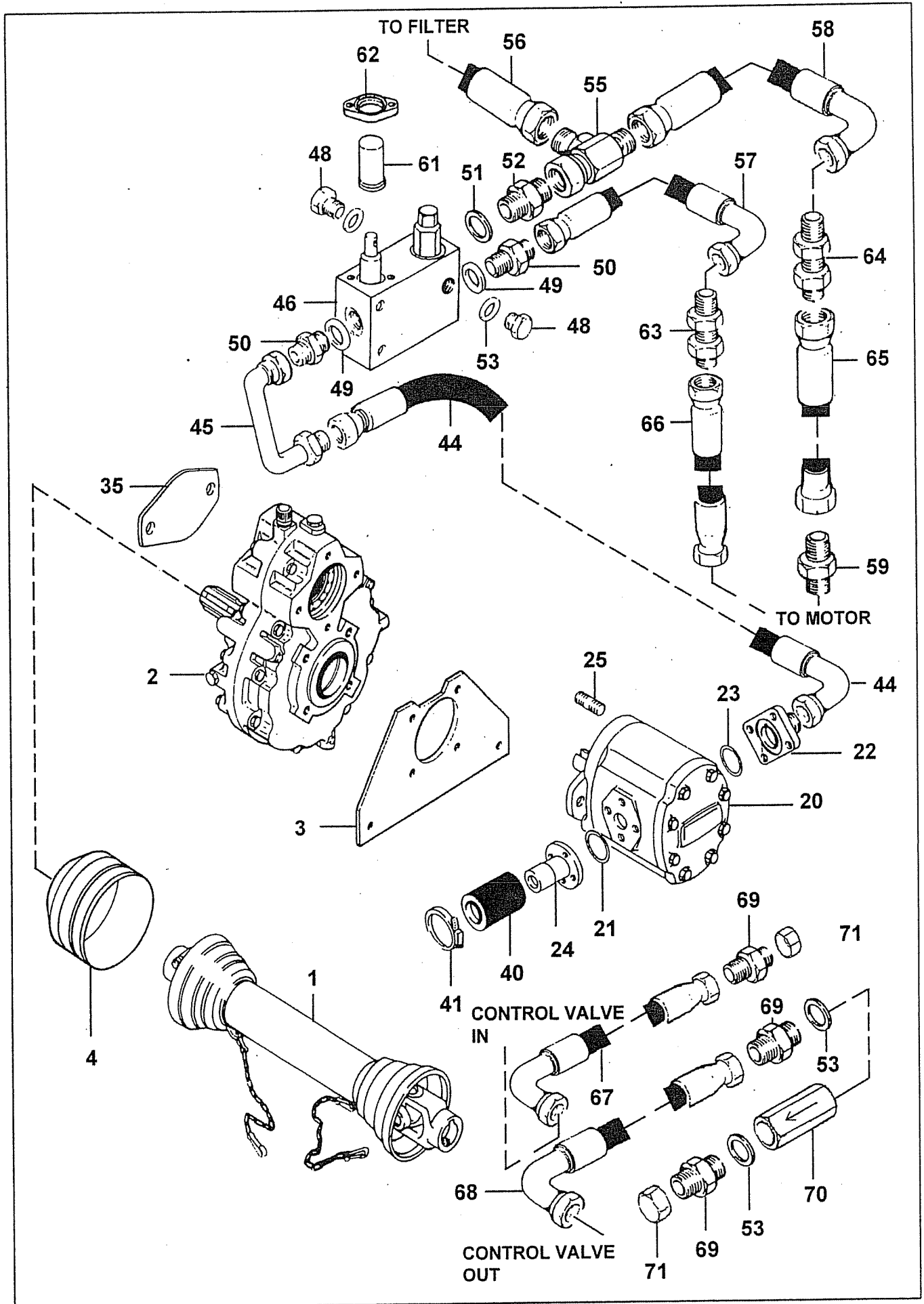
\*MAIN PART IN GROUP, RELATED PARTS HAVE SAME REFERENCE NUMBER





REF	PART NO	DESCRIPTION	QTY
		<b>76.404.01/76.535.01 PTO/GEARBOX ASSY</b>	
01	41624.01	PTO SHAFT ASSY 560 MM C/C ) <i>Check type</i>	1
01	41624.31	CROSS JOURNAL SET ) <i>for replacement</i>	-
01	41624.32	COMPLETE SHIELD ) <i>parts</i>	-
*01	04.402.01	PTO SHAFT ASSEMBLY )	1
01	06.154.13	CROSS JOURNAL SET )	-
01	04.043.02	COMPLETE SHIELD )	-
02	05.264.22	SETSCREW M12 X 25MM PLATED	4
02	05.283.03	SHAKEPROOF WASHER 12MM PLATED	4
*02	07.727.05	GEARBOX - LS 3.6:1 SPLINED	1
03	05.287.03	SELF-LOCKING NUT M12 PLATED	2
03	05.291.23	BOLT M12 X 40MM PLATED	2
*03	42289.01	PLATE - GEARBOX MOUNTING	1
04	05.281.03	FLAT WASHER 12MM PLATED	2
04	05.282.03	SPRING WASHER 12MM PLATED	2
04	05.264.21	SETSCREW M12 X 20MM PLATED	2
*04	42273.01	GUARD - PLASTIC PTO CUP	1
		<b>76.405.02 PUMPS - 84L S/PUMP</b>	
20	01.071.13	KEY-SEP 1/4" X 1/4" X 1"	-
20	05.642.02	SEAL KIT (05 650 PUMPS)	2
*20	05.650.03	PUMP	1
21	05.656.01	"O"RING 28 I/D X 2.5	1
22	03.864.01	ADAPTOR-FLANGED 3/4" BSP PLATED	1
22	05.657.01	SCKT CAPSCREW 5/16"UNC X 7/8" PLT	4
23	05.656.03	"O"RING 25 I/D X 3.53	1
24	03.050.02	ADAPTOR-FLANGED 1.1/2" OD PLATED	1
24	05.657.01	SCKT CAPSCREW 5/16"UNC X 7/8" PLT	4
*25	03.100.01	STUD M10 X 34MM	2
25	05.282.02	SPRING WASHER 10MM PLATED	2
25	05.286.02	NUT M10 PLATED	2
*35	04.182.01	PLATE - BLANKING	1
35	05.264.11	SETSCREW M10 X 20MM PLATED	2
35	05.282.02	SPRING WASHER 10MM PLATED	2

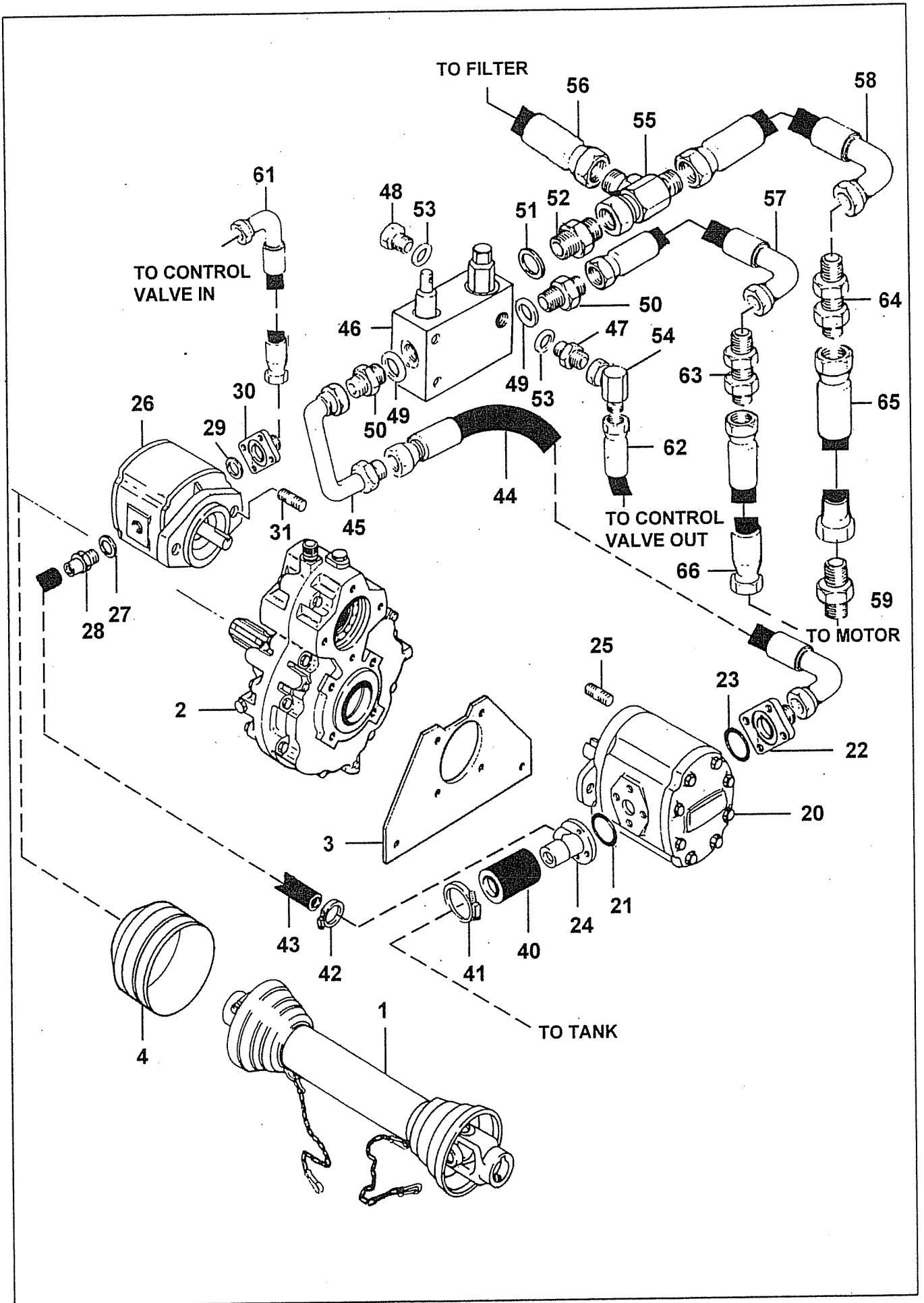
\*MAIN PART IN GROUP, RELATED PARTS HAVE SAME REFERENCE NUMBER



REF	PART NO	DESCRIPTION	QTY
<b>76.407.01 PUMP CIRCUIT (SINGLE)</b>			
40	06.288.01	HOSE 1.1/2" BORE X 120MM	1
41	05.863.02	JUBILEE CLIP 2"DIA	2
44	10.010.22	HOSE 3/4" BSP ST X 90 S.SEAL 1200	1
45	06.459.03	PIPE RIGID 3/4" BSP M/F	1
46	05.281.01	FLAT WASHER 8MM PLATED	2
46	05.282.01	SPRING WASHER 8MM PLATED	2
46	05.291.07	BOLT M8 X 60MM PLATED	2
46	05.625.11	SKT CAPSCREW 1/4"UNC X 5/8" PLATED	2
46	06.284.02	SEAL KIT FOR (06.284.01) VALVE	-
*46	06.284.16	DIVERTER/RELIEF ASSY - 207 BAR	1
46	06.299.03	RELIEF VALVE CARTRIDGE 207BAR	-
48	05.433.01	PLUG 3/8"BSP PLATED	2
49	05.290.06	BONDED SEAL 3/4" BSP	2
50	05.377.01	ADAPTOR 3/4"BSP X 3/4"BSP	2
51	05.290.07	BONDED SEAL 1"BSP	1
52	05.434.01	ADAPTOR 1"BSP X 1"BSP	1
53	05.290.04	BONDED SEAL 3/8"BSP	5
55	04.056.02	ADAPTOR-SWIVEL TEE 1"BSP F/M/M	1
56	10.012.10	HOSE 1"BSP ST X 90 S.SEAL 500	1
57	10.010.79	HOSE 3/4" BSP ST/90 S.SEAL 6900	1
58	10.012.81	HOSE 1"BSP ST/90 S.SEAL 7100	1
59	05.373.01	ADAPTOR 3/4" BSP X 1" BSP	1
61	41733.01	LOCKING CAP - SPOOL	1
62	09.968.01	FLANGE	1
63	08.128.08	ADAPTOR BULKHEAD 3/4" BSP C/W LOCKNUT	1
64	08.128.03	ADPATOR 1" BSP BULKHD C/W LOCKNUT	1
65	10.011.26	HOSE 1" BSP ST X ST S.SEAL 1600	1
*65	10.011.22 RH	HOSE 1" BSP ST X ST 1200	1
66	10.009.26	HOSE 3/4" BSP ST/ST S.SEAL 1600	1
*66	10.009.22 RH	HOSE 3/4" BSP ST X ST 1200	1
67	10.004.30	HOSE 3/8" BSP ST X 90 S.SEAL 2000	1
68	10.006.30	HOSE 1/2" BSP ST X 90 S.SEAL 2000	1
69	05.123.01	ADAPTOR 1/2" X 3/8" BSP	3
70	06.282.01	VALVE-NON RETURN 3/8" BSP F/F	1
71	05.300.03	PLUG-PLASTIC 1/2" BSP FEMALE	2

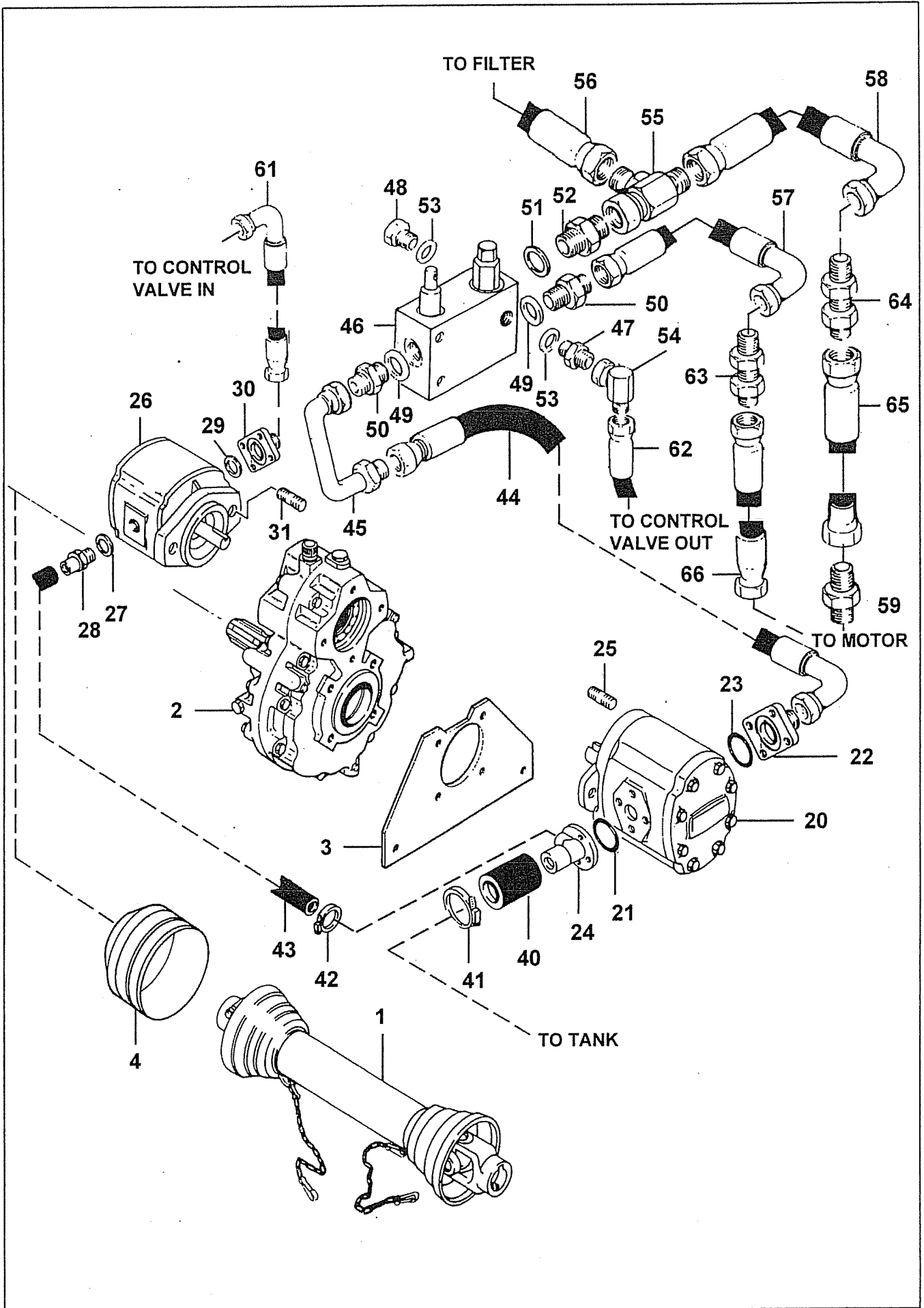
**RH = Right hand machines**

\*MAIN PART IN GROUP, RELATED PARTS HAVE SAME REFERENCE NUMBER



REF	PART NO	DESCRIPTION	QTY
<b>76.404.01/76.535.01 PTO/GEARBOX ASSY</b>			
01	41624.01	PTO SHAFT ASSY 560 MM C/C )	1
01	41624.31	CROSS JOURNAL SET )	-
01	41624.32	COMPLETE SHIELD )	-
*01	04.402.01	PTO SHAFT ASSEMBLY )	1
01	06.154.13	CROSS JOURNAL SET )	-
01	04.043.02	COMPLETE SHIELD )	-
02	05.264.22	SETSCREW M12 X 25MM PLATED	4
02	05.283.03	SHAKEPROOF WASHER 12MM PLATED	4
*02	07.727.05	GEARBOX - LS 3.6:1 SPLINED	1
03	05.287.03	SELF-LOCKING NUT M12 PLATED	2
03	05.291.23	BOLT M12 X 40MM PLATED	2
*03	42289.01	PLATE - GEARBOX MOUNTING	1
04	05.281.03	FLAT WASHER 12MM PLATED	2
04	05.282.03	SPRING WASHER 12MM PLATED	2
04	05.264.21	SETSCREW M12 X 20MM PLATED	2
*04	42273.01	GUARD - PLASTIC PTO CUP	1
<b>76.405.01 PUMPS - 84L TWP</b>			
20	01.071.13	KEY-SEP 1/4" X 1/4" X 1"	-
20	05.642.02	SEAL KIT (05 650 PUMPS)	-
*20	05.650.03	PUMP	1
21	05.656.01	"O"RING 28 I/D X 2.5	1
*22	03.864.01	ADAPTOR-FLANGED 3/4" BSP PLATED	1
22	05.657.01	SCKT CAPSCREW 5/16" UNC X 7/8" PLT	4
23	05.656.03	"O"RING 25 I/D X 3.53	1
24	05.657.01	SCKT CAPSCREW 5/16" UNC X 7/8" PLT	4
*24	06.251.01	ADAPTOR-INLET PLATED	1
*25	03.100.01	STUD M10 X 34MM	2
25	05.282.02	SPRING WASHER 10MM PLATED	2
25	05.286.02	NUT M10 PLATED	2
26	09.537.01	GEAR PUMP	1
27	05.290.05	BONDED SEAL 1/2" BSP	1
28	04.244.01	ADAPTOR 1/2" BSP X 3/4" O/D	1
29	30.210.92	O RING	1
30	05.657.01	SCKT CAPSCRW 5/16"UNC X 7/8" PLT	4
*30	09.745.01	ADAPTOR-FLANGE 3/8" BSP PLATED	1
*31	03.100.01	STUD M10 X 34MM	2
31	05.282.02	SPRING WASHER 10MM PLATED	2
31	05.286.02	NUT M10 PLATED	2

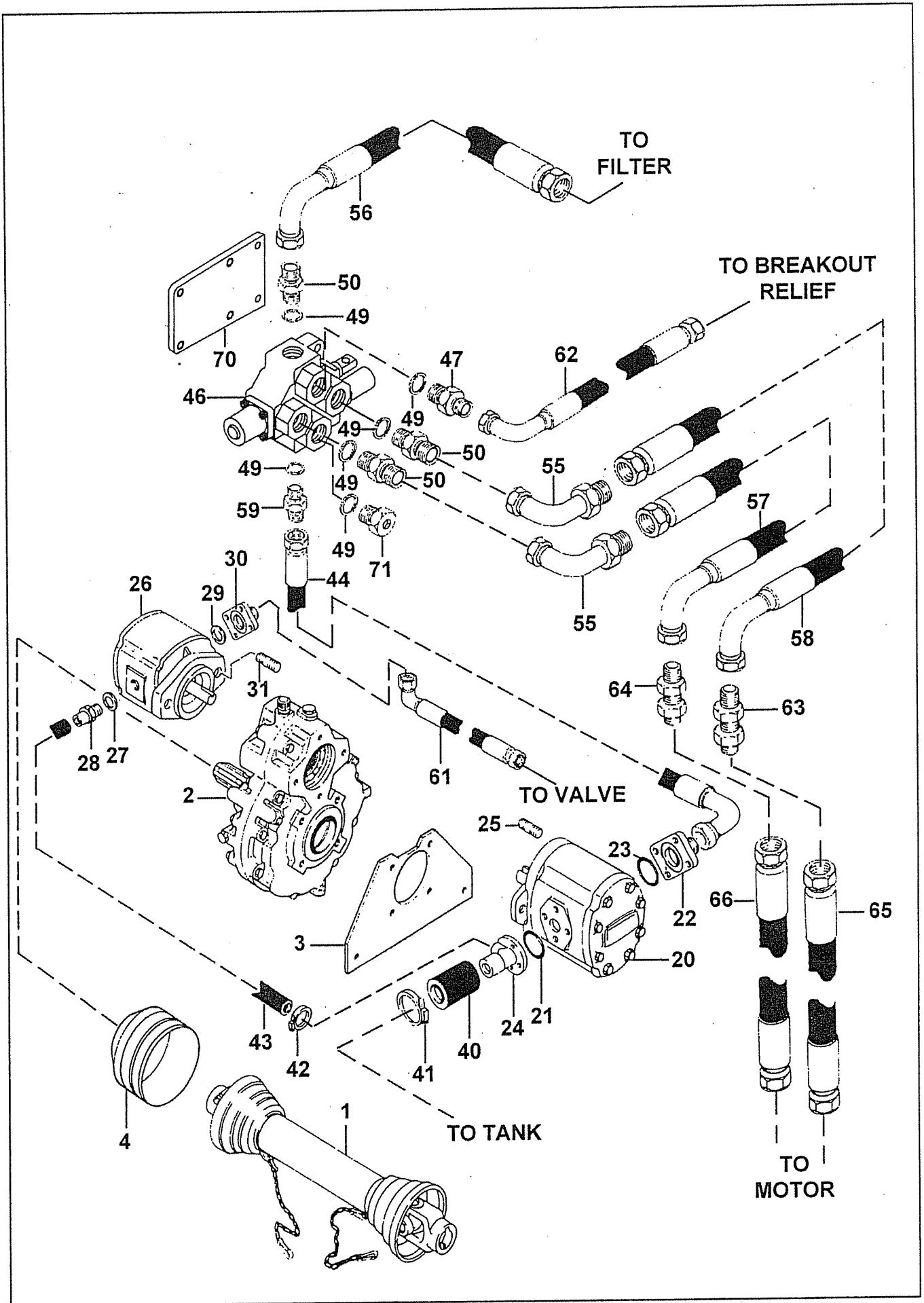
\*MAIN PART IN GROUP, RELATED PARTS HAVE SAME REFERENCE NUMBER



REF	PART NO	DESCRIPTION	QTY
<b>76.407.03 PUMP CIRCUIT - LH TWP</b>			
40	06.288.01	HOSE 1.1/2" BORE X 120MM	1
41	05.863.02	JUBILEE CLIP 2"DIA	2
42	05.863.03	JUBILEE CLIP 20-32 DIA	2
43	05.983.09	HOSE 3/4" BORE X 650MM PLAIN	1
44	10.010.22	HOSE 3/4" BSP ST X 90 S.SEAL 1200	1
45	06.459.03	PIPE RIGID 3/4"BSP M/F	1
46	05.281.01	FLAT WASHER 8MM PLATED	2
46	05.282.01	SPRING WASHER 8MM PLATED	2
46	05.291.07	BOLT M8 X 60MM PLATED	2
46	05.625.11	SKT CAPSCREW 1/4UNC X 5/8 PLATED	2
46	06.284.02	SEAL KIT FOR (06.284.01) VALVE	-
*46	06.284.16	DIVERTER/RELIEF ASSY - 207 BAR	1
46	06.299.03	RELIEF VALVE CARTRIDGE 207BAR	-
47	05.123.01	ADAPTOR 1/2" BSP X 3/8" BSP	1
48	05.433.01	PLUG 3/8"BSP PLATED	1
49	05.290.06	BONDED SEAL 3/4"BSP	2
50	05.377.01	ADAPTOR 3/4"BSP X 3/4"BSP	2
51	05.290.07	BONDED SEAL 1"BSP	1
52	05.434.01	ADAPTOR 1"BSP X 1"BSP	1
53	05.290.04	BONDED SEAL 3/8"BSP	2
54	05.835.05	ADAPTOR-SWIVEL 90 1/2"BSP M/F	1
55	04.056.02	ADAPTOR-SWIVEL TEE 1"BSP F/M/M	1
56	10.012.10	HOSE 1"BSP ST X 90 S.SEAL 500	1
57	10.010.79	HOSE 3/4" BSP ST/90 S.SEAL 6900	1
58	10.012.81	HOSE 1"BSP ST/90 S.SEAL 7100	1
59	05.373.01	ADAPTOR 3/4" BSP X 1"BSP	1
61	10.004.18	HOSE 3/8"BSP ST X 90 S.SEAL 900	1
62	10.006.14	HOSE 1/2"BSP ST X 90 S.SEAL 700	1
63	08.128.08	ADPR BULKHD 3/4"BSP C/W LOCKNUT	1
64	08.128.03	ADAPTR 1"BSP BULKHEAD C/W LNUT	1
65	10.011.26	HOSE 1"BSP ST X ST S.SEAL 1600	1
*65	10.011.22 RH	HOSE 1" BSP ST X ST 1200	1
66	10.009.26	HOSE 3/4"BSP ST/ST S.SEAL 1600	1
*66	10.009.22 RH	HOSE 3/4" BSP ST X ST 1200	1

RH = Right hand machines

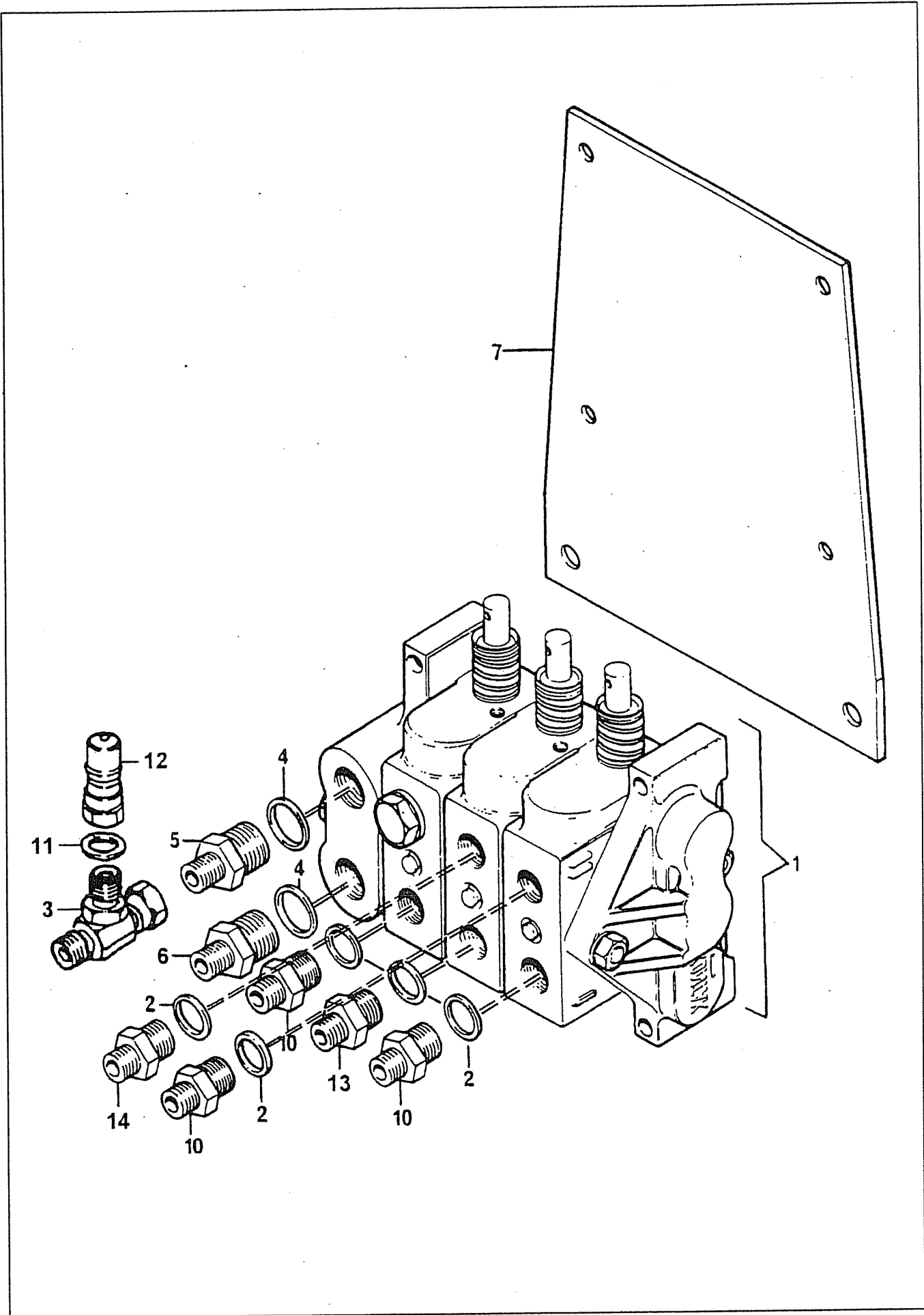
\*MAIN PART IN GROUP, RELATED PARTS HAVE SAME REFERENCE NUMBER





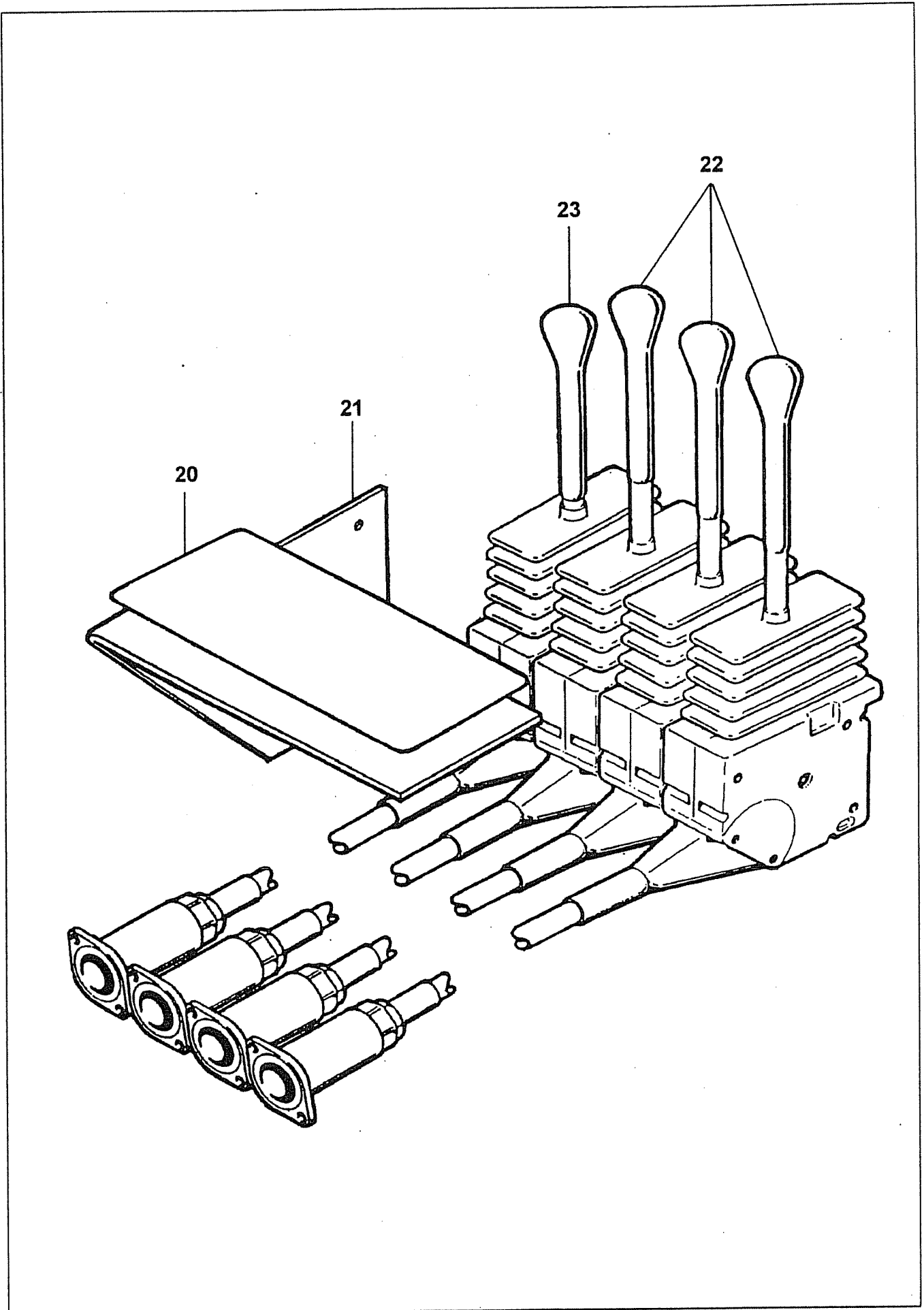
REF	PART NO	DESCRIPTION	QTY
76.407.05 PUMP CIRCUIT - RH TWP DSR			
40	06.288.01	HOSE 1.1/2" BORE X 120MM	1
41	05.863.02	JUBILEE CLIP 2"DIA	2
42	05.863.03	JUBILEE CLIP 20-32 DIA	2
43	05.983.09	HOSE 3/4" BORE X 650MM PLAIN	1
44	10.010.22	HOSE 3/4"BSP STX90 S.SEAL 1200	1
46	05.264.01	SETSCREW M8 X 20MM PLATED	2
46	05.281.01	FLAT WASHER 8MM PLATED*	2
46	05.282.01	SPRING WASHER 8MM PLATED*	2
46	8125107	RELIEF ASSY - 210 BAR	1
46	8125385	ROTOR CONTROL VALVE (DSR)	1
46	9343033	M6 X 16 SOCKET HEAD CAP	2
47	05.376.01	ADAPTOR 3/4"BSP X 1/2"BSP	1
49	05.290.06	BONDED SEAL 3/4"BSP	5
50	05.373.01	ADAPTOR 3/4"BSP X 1"BSP	4
55	30.052.66	1" BSP M/F SWEPT ELBOWS	2
56	10.012.09	HOSE 1"BSP STX90 S.SEAL 450	1
57	10.012.82	HOSE 1" BSP ST/90 S.SEAL 7200	1
58	10.012.84	HOSE 1"BSP STX90 S.SEAL 7400	1
59	05.377.01	ADAPTOR 3/4"BSP X 3/4"BSP	1
61	10.004.18	HOSE 3/8"BSP STX90 S.SEAL 900	1
62	10.006.14	HOSE 1/2"BSP STX90 S.SEAL 700	1
63	08.128.03	ADAPTR 1"BSP BULKHEAD C/W LNUT	1
64	08.128.03	ADAPTR 1"BSP BULKHEAD C/W LNUT	1
65	10.011.22	HOSE 1"BSP STXST S.SEAL 1200	1
66	10.011.22	HOSE 1"BSP STXST S.SEAL 1200	1
70	05.264.13	SETSCREW M10 X 30MM PLATED*	2
70	05.281.02	FLT WASHER 10MM PLATED FORM C*	2
70	05.282.02	SPRING WASHER 10MM PLATED*	2
70	09.922.02	PLATE - DSR MOUNTING	1
71	05.313.01	BLANKING PLUG - 3/4" BSP	1
71	05.313.01	BLANKING PLUG 3/4" BSP	1

\*MAIN PART IN GROUP, RELATED PARTS HAVE SAME REFERENCE NUMBER



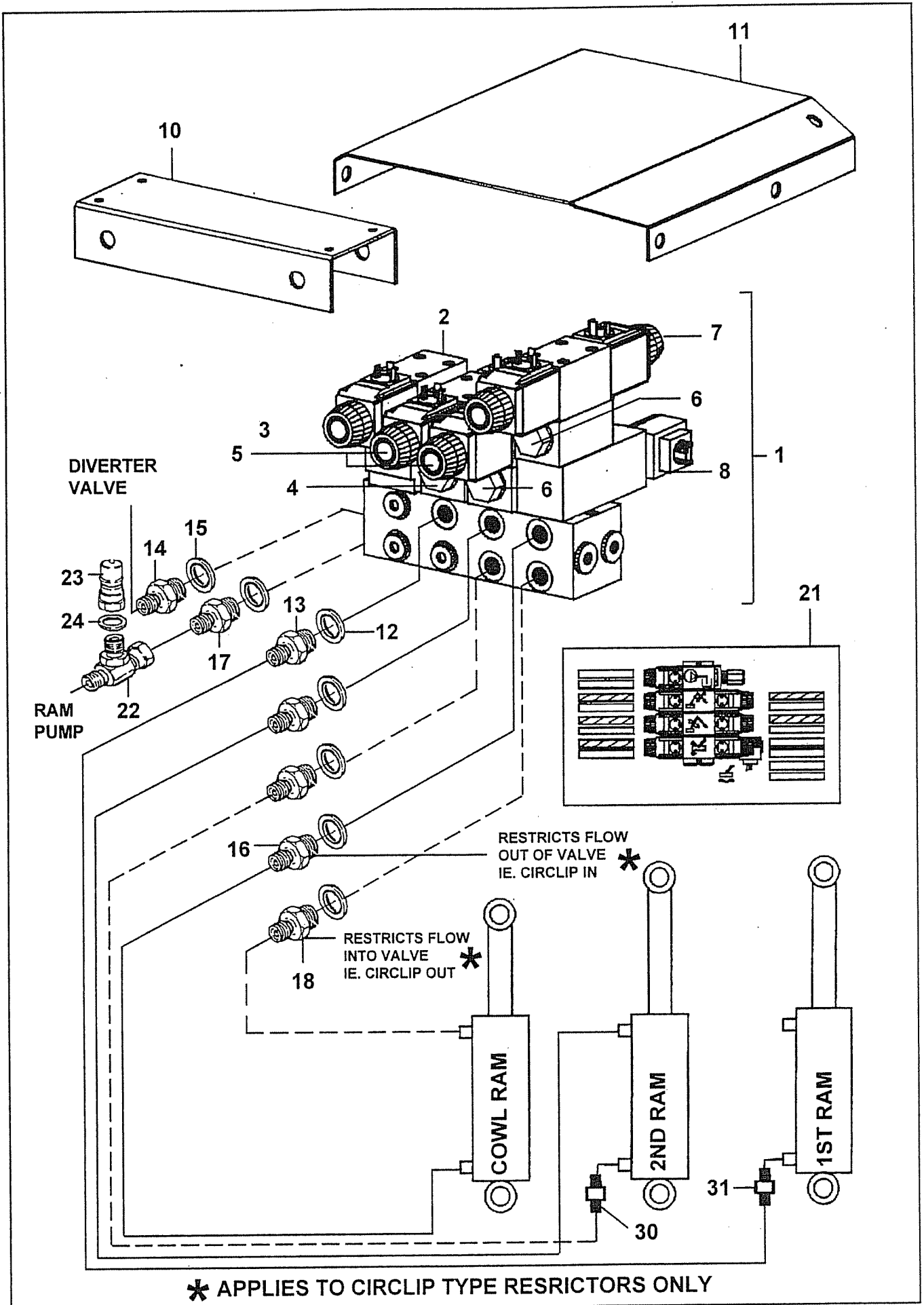
REF	PART NO	DESCRIPTION	QTY
<b>74.918.02 CONTROL VALVE ASSY-CABLE</b>			
01	0342061	SKT CAPSCREW 1/4"UNC X 3/4" BSP	6
01	41335.01	VALVE ASSY-3 SPOOL	1
02	05.290.05	BONDED SEAL 1/2"BSP	5
03	04.056.16	ADAPTOR F/M/M 3/8" X 3/8" X 1/4" BSP	1
04	05.290.06	BONDED SEAL 3/4"BSP	2
05	05.128.01	ADAPTOR 3/4" BSP X 3/8" BSP	1
06	05.376.01	ADAPTOR 3/4"BSP X 1/2"BSP	1
07	05.282.02	SPRING WASHER 10MM PLATED	3
07	05.286.02	NUT M10 PLATED	3
07	05.291.18	BOLT M10 X 65 PLATED	3
*07	08.057.01	PLATE - CONTROL VALVE KONTAK	1
10	01.099.03	ADAPTOR 1/2" BSP X 1/4"BSP	3
11	05.290.02	BONDED SEAL 1/4"BSP	1
12	05.146.12	Q/R COUPLING 1/4" BSP MALE	1
13	03.028.19	RESTRICTOR 1/2 X 1/4"BSP 1.00MM	1
14	03.028.20	RESTRICTOR 1/2 X 1/4"BSP 1.27MM	1

\*MAIN PART IN GROUP, RELATED PARTS HAVE SAME REFERENCE NUMBER



REF	PART NO	DESCRIPTION	QTY
<b>74.920.01 CABLE ASSEMBLY (SINGLE PUMP)</b>			
20	09.916.13	DECAL-LEVER OP.3 LEVER LH	1
20	09.916.14	DECAL-LEVER OP.3 LEVER RH	1
21	05.839.03	SETSCREW M8 X 16MM PLATED	2
21	05.948.07	WING NUT M8 - PLATED	2
*21	41.181.01	BRACKET-3 LEVER MOUNTING LH	1
22	04.282.73	STUD - M6 X 149 (PLATED)	3
22	05.281.10	FLAT WASHER 6MM PLATED	3
22	05.282.07	SPRING WASHER 6MM PLATED	3
22	05.286.10	NUT M6 PLATED	6
*22	09.968.01	CABLE ASSY - 2.5M BLK LNG	3
<b>74.922.01 CABLE ASSEMBLY (TWIN PUMP)</b>			
20	05.839.03	SETSCREW M8 X 16MM PLATED	2
20	05.948.07	WING NUT M8 - PLATED	2
*20	09.916.03	DECAL - LEVER OP. 4 LEVER LH	1
20	09.916.04	DECAL - LEVER OPERATION RH	1
21	04.282.70	STUD - M6 X 191 PLATED	3
21	05.281.10	FLAT WASHER 6MM PLATED	3
21	05.282.07	SPRING WASHER 6MM PLATED	3
21	05.286.10	NUT M6 PLATED	6
*21	09.970.01	BRACKET - 4 LEVER MOUNTING LH	1
22	09.968.01	CABLE ASSY - 2.5M BLK LNG	3
23	09.968.07	CABLE ASSY - 2.5M RED SHRT	1

\*MAIN PART IN GROUP, RELATED PARTS HAVE SAME REFERENCE NUMBER



REF	PART NO	DESCRIPTION	QTY
<b>76.411.01 CONTROL VALVE ASSY-EPP 3 SERV.</b>			
01	05.282.09	SPRING WASHER 5MM PLATED	4
01	30.073.93	SCREW M5 X 16MM 8.8 GRADE	4
*01	41784.01	CONTROL VALVE PROP 3 SERVICE	1
02	08.852.69	RELIEF VALVE CART.	-
03	08.852.51	CETOP 3 VENT VALVE	-
04	08.852.55	CETOP 3 SINGLE PO CHECK VALVE	-
05	41784.31	SPOOL VALVE PROPORTIONAL	-
06	08.852.53	CETOP 3 DUAL PO CHECK VALVE	-
07	08.852.52	CETOP 3 MOTOR SPOOL VALVE	-
08	41784.33	VALVE CARTRIDGE - HEAD FLOAT	-
10	07.920.01	PLATE - CONTROL VALVE VICKERS	1
11	05.264.01	SETSCREW M8 X 20MM PLATED	2
11	05.281.01	FLAT WASHER 8MM PLATED	2
11	05.282.01	SPRING WASHER 8MM PLATED	2
*11	09.369.01	COVER - VALVE	1
12	05.290.04	BONDED SEAL 3/8"BSP	5
13	01.099.01	ADAPTOR 3/8BSP X1/4BSP	3
14	05.122.01	ADAPTOR 1/2" BSP X 1/2" BSP	1
15	05.290.05	BONDED SEAL 1/2"BSP	2
16	07.605.01	RESTRICTOR 3/8" X 1/4"BSP 1.00MM	1
17	05.123.01	ADAPTOR 1/2" BSP X 3/8" BSP	1
18	07.605.01	RESTRICTOR 3/8 X 1/4" BSP 1.00MM	1
21	41814.01	DECAL - 3 SERVICE	1
22	04.056.16	ADAPTOR F/M/M 3/8X3/8X1/4 BSP	1
23	05.146.12	Q/R COUPLING 1/4" BSP MALE	1
24	05.290.02	BONDED SEAL 1/4"BSP	1
<b>76.271.07 RCA FF INSTALLATION</b>			
01	05.282.07	SPRING WASHER 6MM PLATED	2
01	05.286.10	NUT M6 PLATED	2
*01	09.968.03	CABLE ASSY - 3.0M RED SHRT	1
01	30.068.90	BOLT M6 X 55 MM 8.8 GRADE Z/P.	2

\*MAIN PART IN GROUP. RELATED PARTS HAVE SAME REFERENCE NUMBER

SERIES 3

GROUP 1 - DUMP

BLACK

PINK

GROUP 2 - 1ST RAM (PROP)

BLACK (X2)

RED/BLACK

RED/BLUE

GROUP 3 - 2ND RAM (PROP)

BLACK (X2)

RED/BROWN

RED/WHITE

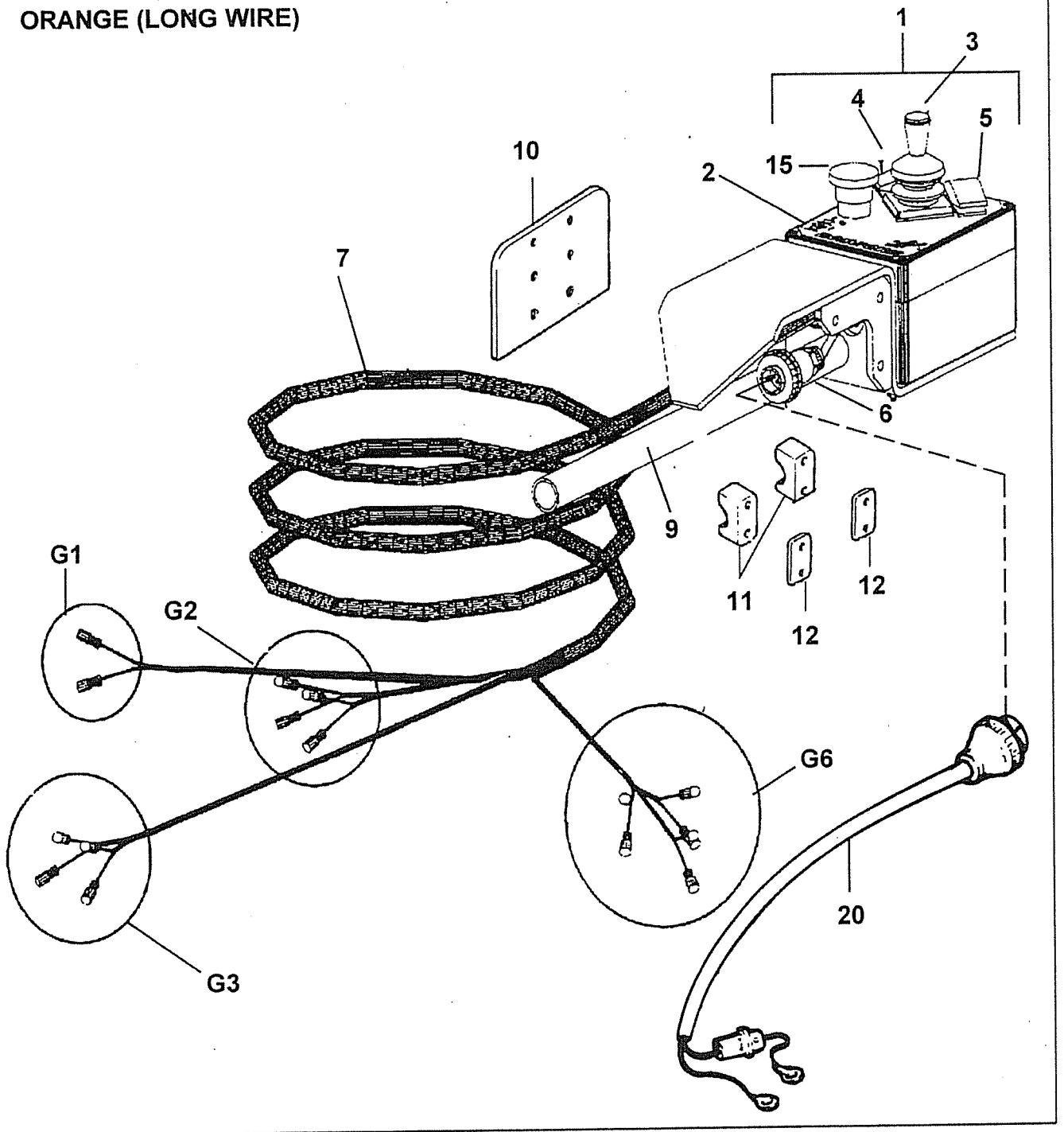
GROUP 6 - COWL & HEAD FLOAT (B/B)

BLACK (X3 - 2STD, 1 LONG)

GREEN

GREEN/RED

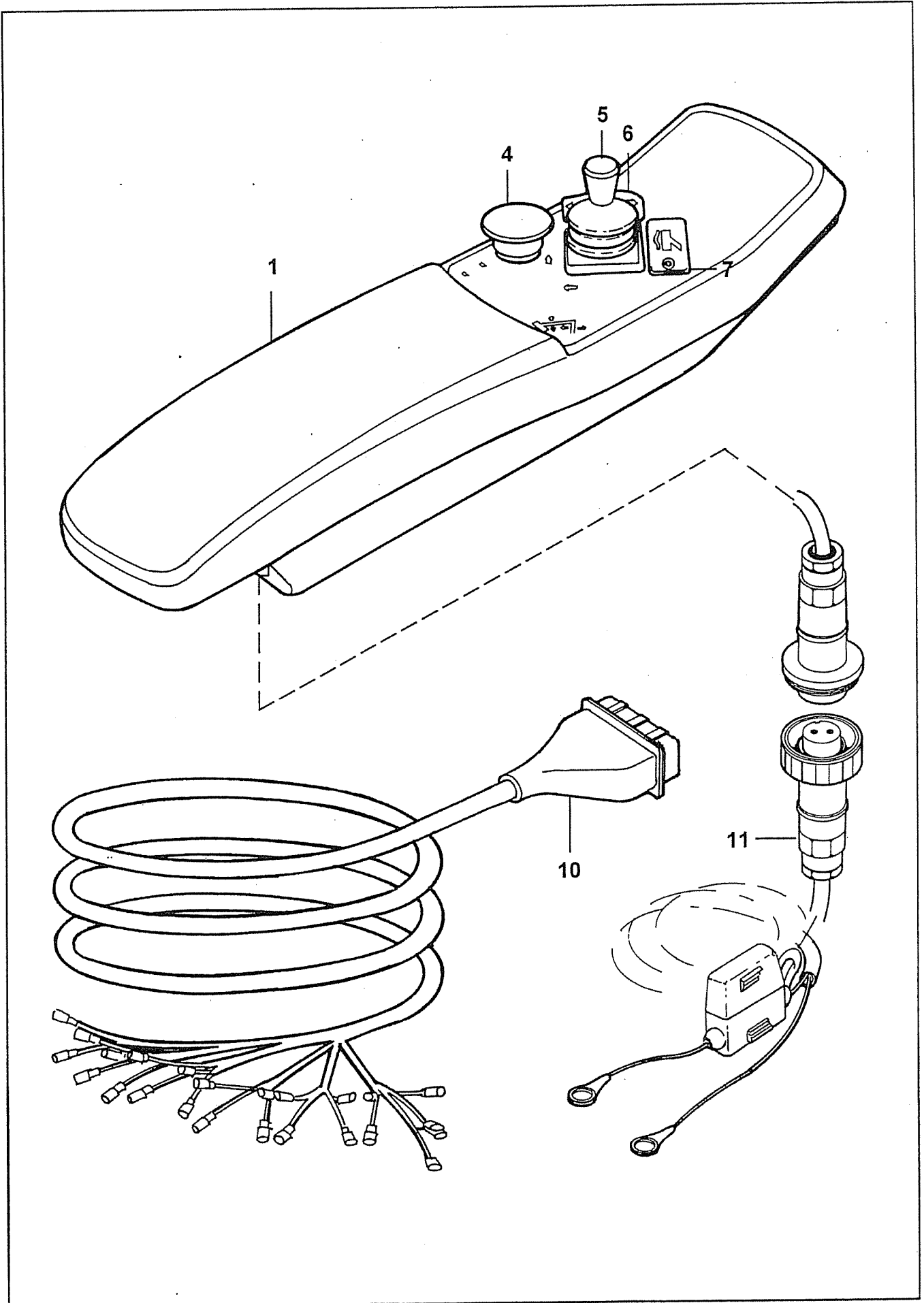
ORANGE (LONG WIRE)





REF	PART NO	DESCRIPTION	QTY
<b>76.271.09 CONTROL BOX ASSY - RIGHT HAND</b>			
01	41786.04	CONTROL BOX 3 SERV (2+1)	1
02	41786.50	DECAL RH	-
03	41786.34	JOYSTICK ASSY	-
04	41786.35	SWITCH ASSY COWL	-
05	41786.38	SWITCH ASSY HEAD FLOAT	-
06	41786.41	WIRE LOOM POWER	-
07	41786.44	WIRE LOOM 3 SERV	-
08	41786.47	PCB ASSY 3 SERVICE	-
09	41757.01	BRACKET - CONTROL BOX MOUNT	1
10	05.264.02	SETSCREW M8 X 25MM PLATED	2
10	05.281.01	FLAT WASHER 8MM PLATED	2
10	05.282.01	SPRING WASHER 8MM PLATED	2
10	05.948.07	WING NUT M8 - PLATED	2
*10	08.317.01	PLATE - CONTROL BOX	1
10	30.068.90	BOLT M6 X 55 MM 8.8 GRADE Z/P.	4
10	30.070.64	NUT NYLOC M6.Z/P.	4
11	30.209.71	CLAMP SINGLE 1"	4
12	30.209.73	COVER PLATE	2
15	41786.33	STOP SWITCH	-
20	08.987.01	CABLE ASSY - 2 CORE X 5.5M HVY	1
<b>76.271.01 REMOTE CONTROL ASSY - LEFT HAND</b>			
01	41786.01	CONTROL BOX 3 (2+1) SERVICE	1
02	41786.32	DECAL LH	-
03	41786.34	JOYSTICK ASSY	-
04	41786.35	SWITCH ASSY COWL	-
05	41786.38	SWITCH ASSY HEAD FLOAT	-
06	41786.41	WIRE LOOM POWER	-
07	41786.44	WIRE LOOM 3 SERV	-
08	41786.47	PCB ASSY 3 SERVICE	-
09	41757.01	BRACKET - CONTROL BOX MOUNT	1
10	05.264.02	SETSCREW M8 X 25MM PLATED	2
10	05.281.01	FLAT WASHER 8MM PLATED	2
10	05.282.01	SPRING WASHER 8MM PLATED	2
10	05.948.07	WING NUT M8 - PLATED	2
*10	08.317.01	PLATE - CONTROL BOX	1
10	30.068.90	BOLT M6 X 55 MM 8.8 GRADE Z/P.	4
10	30.070.64	NUT NYLOC M6.Z/P.	4
11	30.209.71	CLAMP SINGLE 1"	4
12	30.209.73	COVER PLATE	2
15	41786.33	STOP SWITCH	-
20	08.987.01	CABLE ASSY - 2 CORE X 5.5M HVY	1

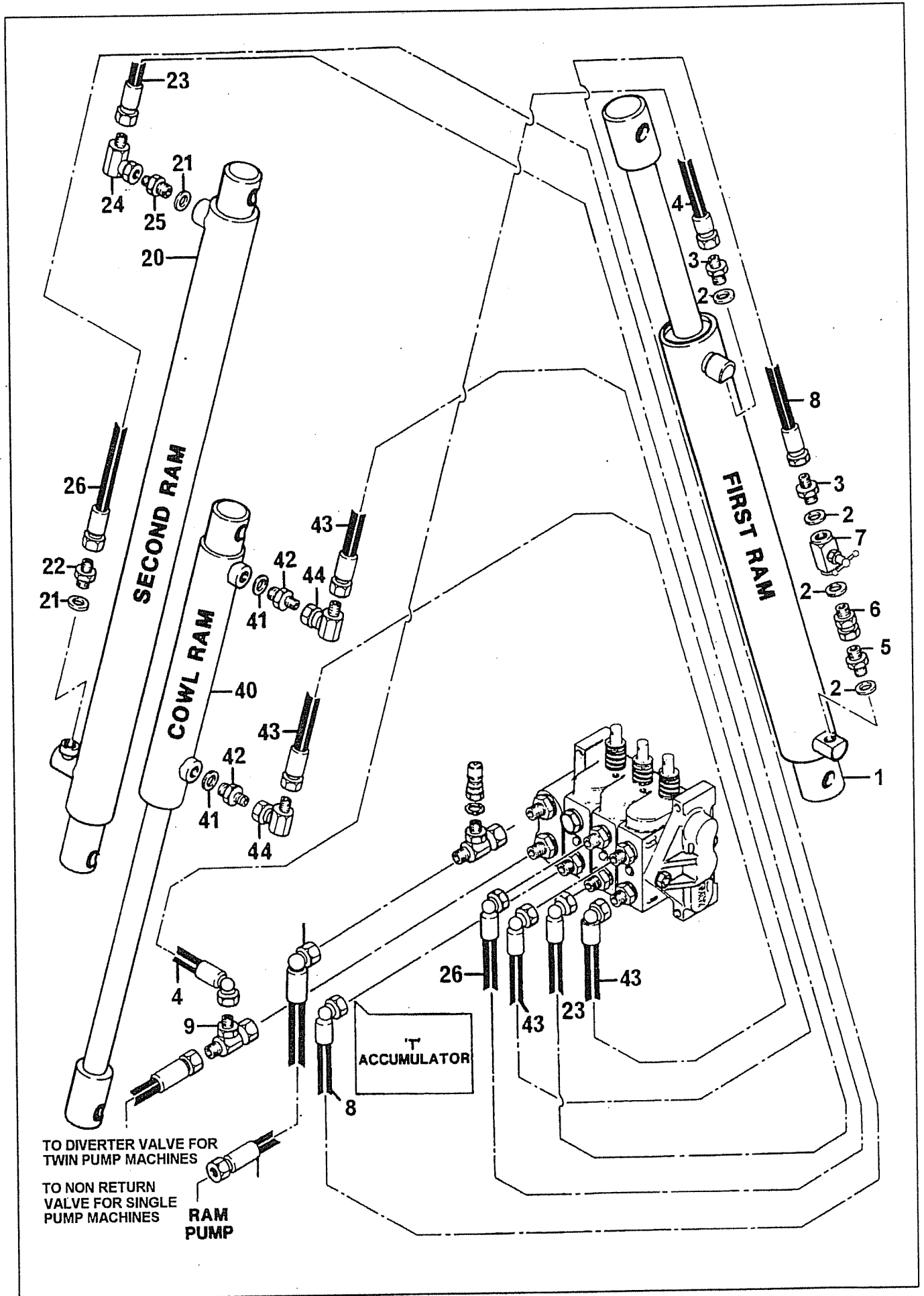
\*MAIN PART IN GROUP, RELATED PARTS HAVE SAME REFERENCE NUMBER



REF	PART NO	DESCRIPTION	QTY
<b>76.426.01 EPP II REMOTE CONTROL ASSY LH/RH - 3 SERVICE</b>			
*01	42226.01	CONTROL BOX 3 SERVICE LH	1
01	42226.02	CONTROL BOX 3 SERVICE RH	1
*02	42226.96	DECAL SET EPPII LH           NI	-
02	42226.95	DECAL SET EPPII RH           NI	-
03	42226.94	MAIN PCB ASSY EPPII       NI	-
04	41786.33	STOP SWITCH	-
05	41786.34	JOYSTICK ASSY	-
06	41786.35	SWITCH ASSY COWL	-
10	42197.11	WIRE LOOM	1
11	08.987.01	CABLE ASSY - 2 CORE X 5.5M	1
<b>FOR MACHINES WITH HEAD FLOAT</b>			
*01	42226.11	CONTROL BOX 3 SERVICE LH	1
01	42226.12	CONTROL BOX 3 SERVICE RH	1
07	41786.38	SWITCH ASSY HEAD FLOAT	-

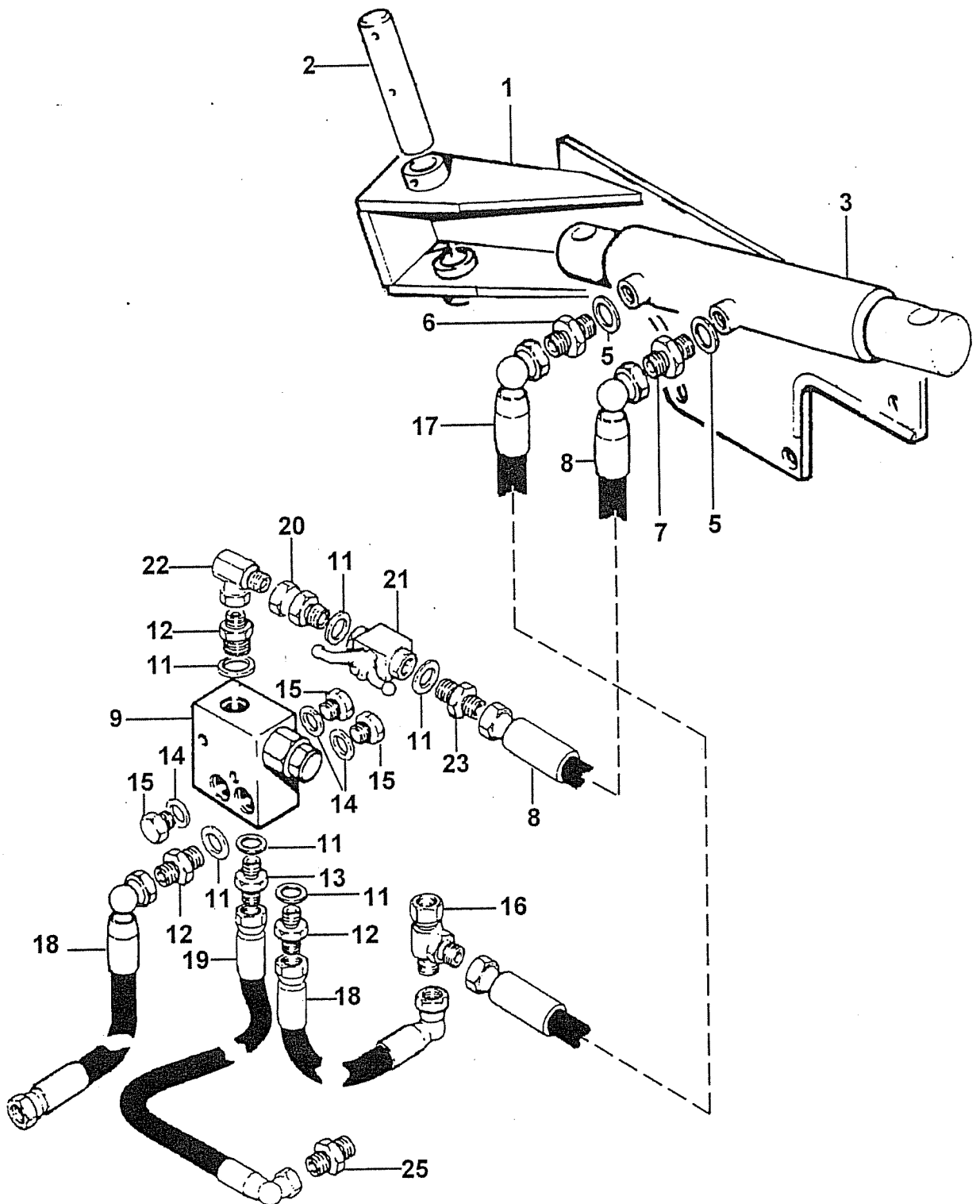
**NI = Not illustrated**

\*MAIN PART IN GROUP, RELATED PARTS HAVE SAME REFERENCE NUMBER

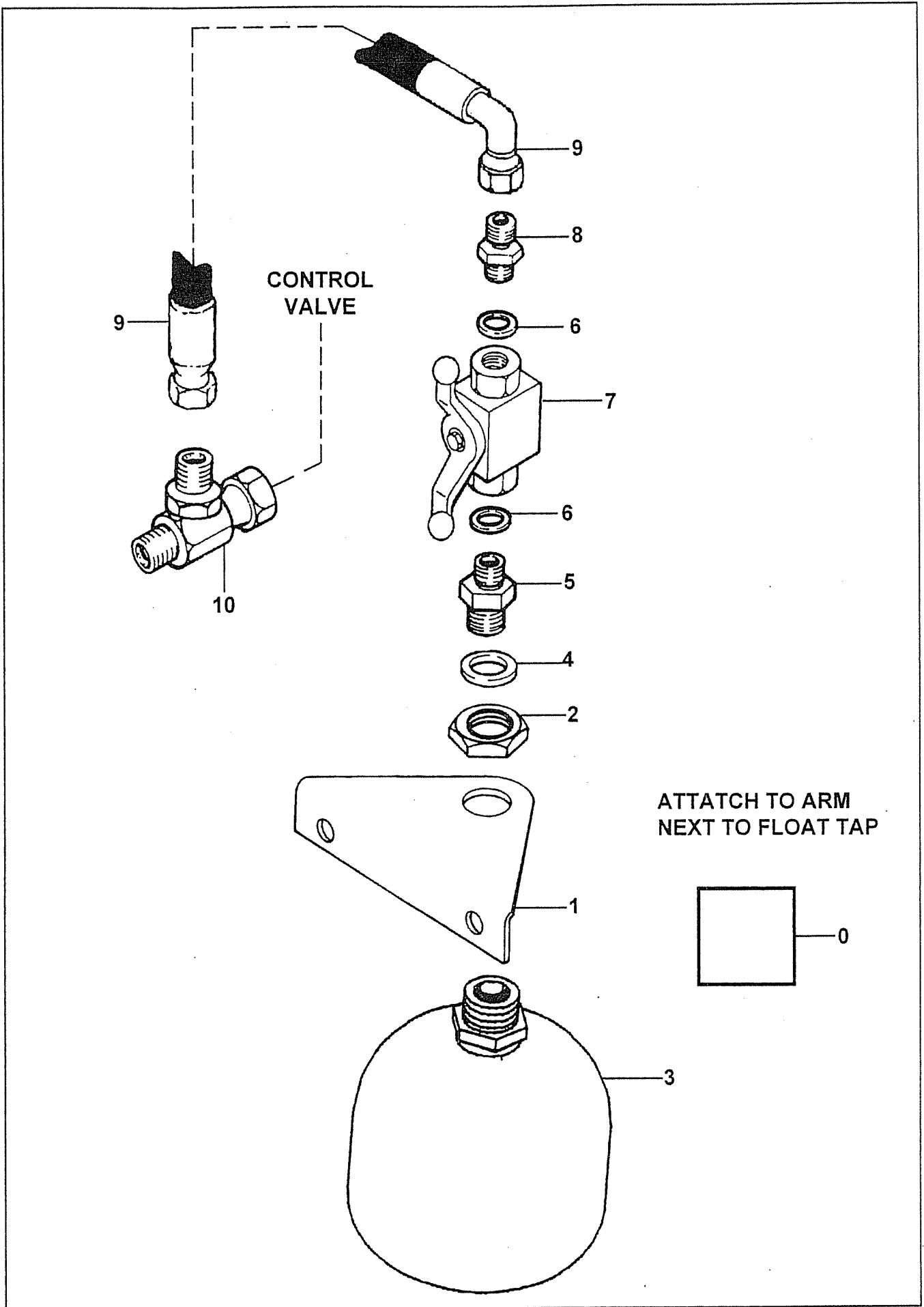


REF	PART NO	DESCRIPTION	QTY
<b>76.366.02 RAM CIRCUIT - FIRST RAM</b>			
*01	07.831.01	RAM ASSY. 70 BORE X 615 STROKE	1
01	07.831.02	SEAL KIT (FOR 07.831.01)	-
02	05.290.04	BONDED SEAL 3/8" BSP	4
03	01.099.01	ADAPTOR 3/8BSP X1/4" BSP	2
04	10.002.34	HOSE 1/4"BSP ST X 90 S.SEAL 2400	1
05	03.028.15	RESTRICTOR 3/8 X 3/8" BSP 1.7MM	1
06	02.714.01	ADAPTOR-SWIVEL ST 3/8BSP M/F	1
07	08.200.01	VALVE - ISOLATING 3/8" BSP	1
08	10.002.32	HOSE 1/4"BSP ST X 90 S.SEAL 2200	1
09	04.056.25	ADAPTOR T FMM 1/2" X 1/2" X 1/4"	1
<b>72.087.01 RAM CIRCUIT - SECOND RAM</b>			
20	04.156.13	SEAL KIT (04156 D/A RAMS)	-
*20	04.156.22	RAM ASSY-D/A 60MM BORE X 645MM	1
21	05.290.04	BONDED SEAL 3/8"BSP	2
22	01.099.01	ADAPTOR 3/8" BSP X1/4" BSP	1
23	10.002.42	HOSE 1/4"BSP ST X 90 S.SEAL 3200	1
24	05.835.04	ADAPTOR - SWIVEL 90 1/4" BSP MF	1
25	03.028.12	RESTRICTOR 3/8" X 1/4" BSP 1.70	1
26	10.002.47	HOSE 1/4" BSP ST X 90 S.SEAL 3700	1
<b>76.248.02 RAM CIRCUIT - COWL RAM TWIN PUMP</b>			
40	04.156.13	SEAL KIT (04156 D/A RAMS)	-
*40	04.156.24	RAM ASSY-D/A 60MM BORE X 430MM	1
40	05.953.01	GREASE NIPPLE M6	2
41	05.290.04	BONDED SEAL 3/8"BSP	2
42	01.099.01	ADAPTOR 3/8" BSP X1/4" BSP	2
43	10.002.70	HOSE 1/4"BSP ST X 90 S.SEAL 6000	1
44	05.835.04	ADAPTOR - SWIVEL 90 1/4" BSP MF	1
<b>76.248.01 RAM CIRCUIT - COWL RAM SINGLE PUMP</b>			
40	04.156.13	SEAL KIT (04156 D/A RAMS)	-
*40	04.156.24	RAM ASSY-D/A 60MM BORE X 430MM	1
40	05.953.01	GREASE NIPPLE M6	2
41	05.290.04	BONDED SEAL 3/8" BSP	2
42	03.028.08	RESTRICTOR 3/8" X 1/4" BSP	2
43	10.002.70	HOSE 1/4" BSP ST X 90 S.SEAL 6000	1
44	05.835.04	ADAPTOR - SWIVEL 90 1/4" BSP MF	1

\*MAIN PART IN GROUP, RELATED PARTS HAVE SAME REFERENCE NUMBER



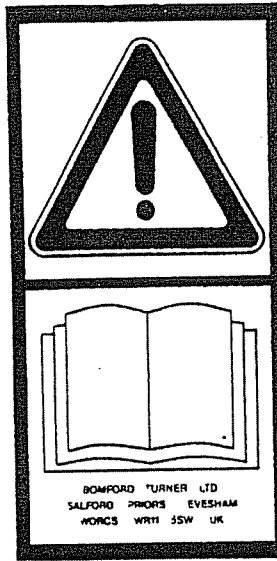
REF	PART NO	DESCRIPTION	QTY
72.099.03 BREAKOUT HYD. RH DSR			
	05.835.04	ADAPTOR - SWIVEL 90 1/4"BSP MF	2
01	07.944.02	BRACKET - BREAKOUT RH.	1
02	03.653.43	PIN 25DIA X 141	1
02	05.201.07	TENSION PIN 8MM X 45MM PLATED	1
02	05.953.01	GREASE NIPPLE M6*	1
03	09.856.01	RAM ASSY D/A 50 BORE X 70 STRK	1
03	09.856.02	SEAL KIT FOR 09.856 RAMS	0
05	05.290.04	BONDED SEAL 3/8"BSP	2
06	03.028.14	RESTRICTOR 3/8" X 1/4"BSP 0.75	1
07	01.099.01	ADAPTOR 3/8BSP X1/4BSP	1
08	10.002.27	HOSE 1/4"BSP STX90 S.SEAL 1700	1
09	06.277.01	RELIEF VALVE ASSY(B'OUT) 180 B	1
09	06.277.02	SEAL KIT FOR (06.277.01) VALVE	0
09	06.277.07	RELIEF VALVE CARTRIDGE 180 BAR	0
10	05.282.02	SPRING WASHER 10MM PLATED*	1
10	05.286.02	NUT M10 PLATED*	1
10	05.286.03	NUT M12 PLATED*	1
10	05.292.14	BOLT M10 X 110MM PLATED	1
11	05.290.04	BONDED SEAL 3/8"BSP	6
12	05.124.01	ADAPTOR 3/8" BSP X 3/8" BSP	2
13	01.099.01	ADAPTOR 3/8BSP X1/4BSP	1
14	05.117.01	COPPER WASHER 3/8" BSP	3
15	05.433.01	PLUG 3/8"BSP PLATED	3
16	04.056.10	ADAPTOR - TEE 1/4"BSP F/M/M	2
17	10.002.29	HOSE 1/4"BSP STX90 S.SEAL 1900	1
18	10.006.06	HOSE 1/2"BSP STX90 S.SEAL 300	2
19	10.002.10	HOSE 1/4"BSP STX90 S.SEAL 500	1
20	02.714.01	ADAPTOR-SWIVEL ST 3/8BSP M/F	1
21	08.200.01	VALVE - ISOLATING 3/8" BSP	1
22	05.835.01	ADAPTOR-SWIVEL 90 3/8"BSP M/F	1
23	01.099.01	ADAPTOR 3/8BSP X1/4BSP	1
25	05.123.01	ADAPTOR 1/2" BSP X 3/8" BSP	1





REF	PART NO	DESCRIPTION	QTY
		72.035.01 ACCUMULATOR KIT	
00	09.852.01	DECAL - ARM FLOAT	1
*01	43239.01	BRACKET	1
01	05.264.13	SETSCREW M10 X 30MM PLATED	2
01	05.282.02	SPRING WASHER 10MM PLATED	2
01	05.286.02	NUT M10 PLATED	2
02	8126035	M33 NUT, BULKHEAD	1
03	41451.02	ACCUMULATOR	1
04	05.290.05	BONDED SEAL 1/2" BSP	1
05	05.123.01	ADAPTOR 1/2" BSP X 3/8" BSP	1
06	05.290.04	BONDED SEAL 3/8" BSP	2
07	08.200.01	VALVE - ISOLATING 3/8" BSP	1
08	01.099.01	ADAPTOR 3/8" BSP X 1/4" BSP	1
09	10.002.12	HOSE 1/4" BSP ST X 90 S.SEAL 600	1
10	04.056.10	ADAPTOR - TEE 1/4" BSP F/M/M	1

\*MAIN PART IN GROUP, RELATED PARTS HAVE SAME REFERENCE NUMBER



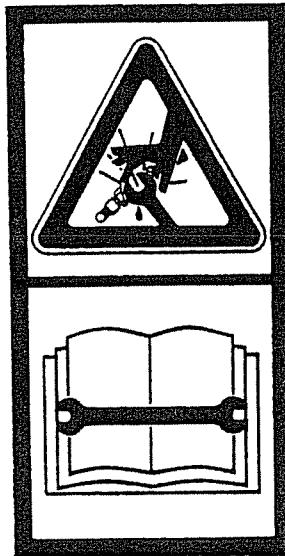
09.821.01



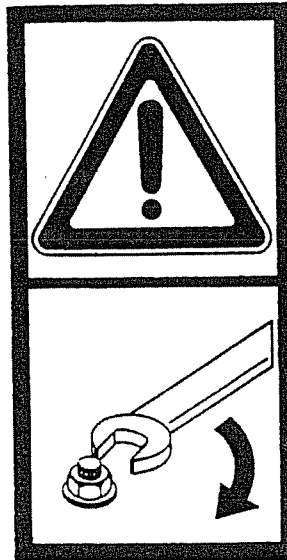
09.821.03



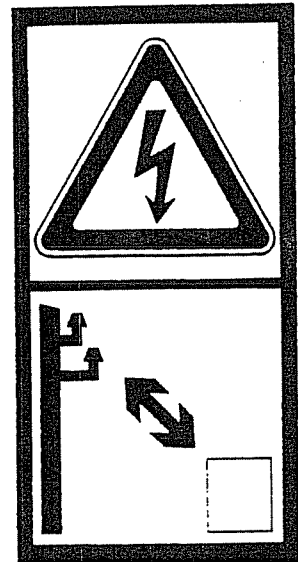
09.821.09



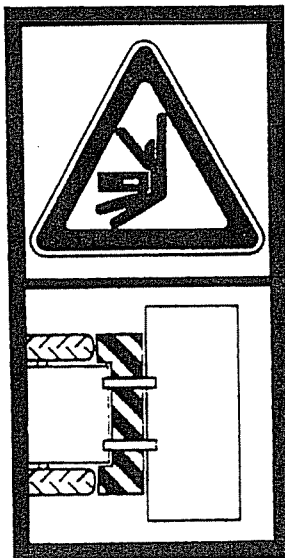
09.821.07



09.821.10



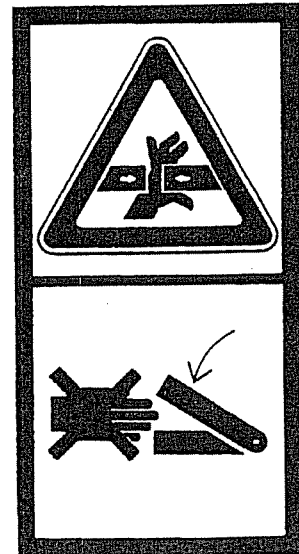
09.821.02



09.821.16



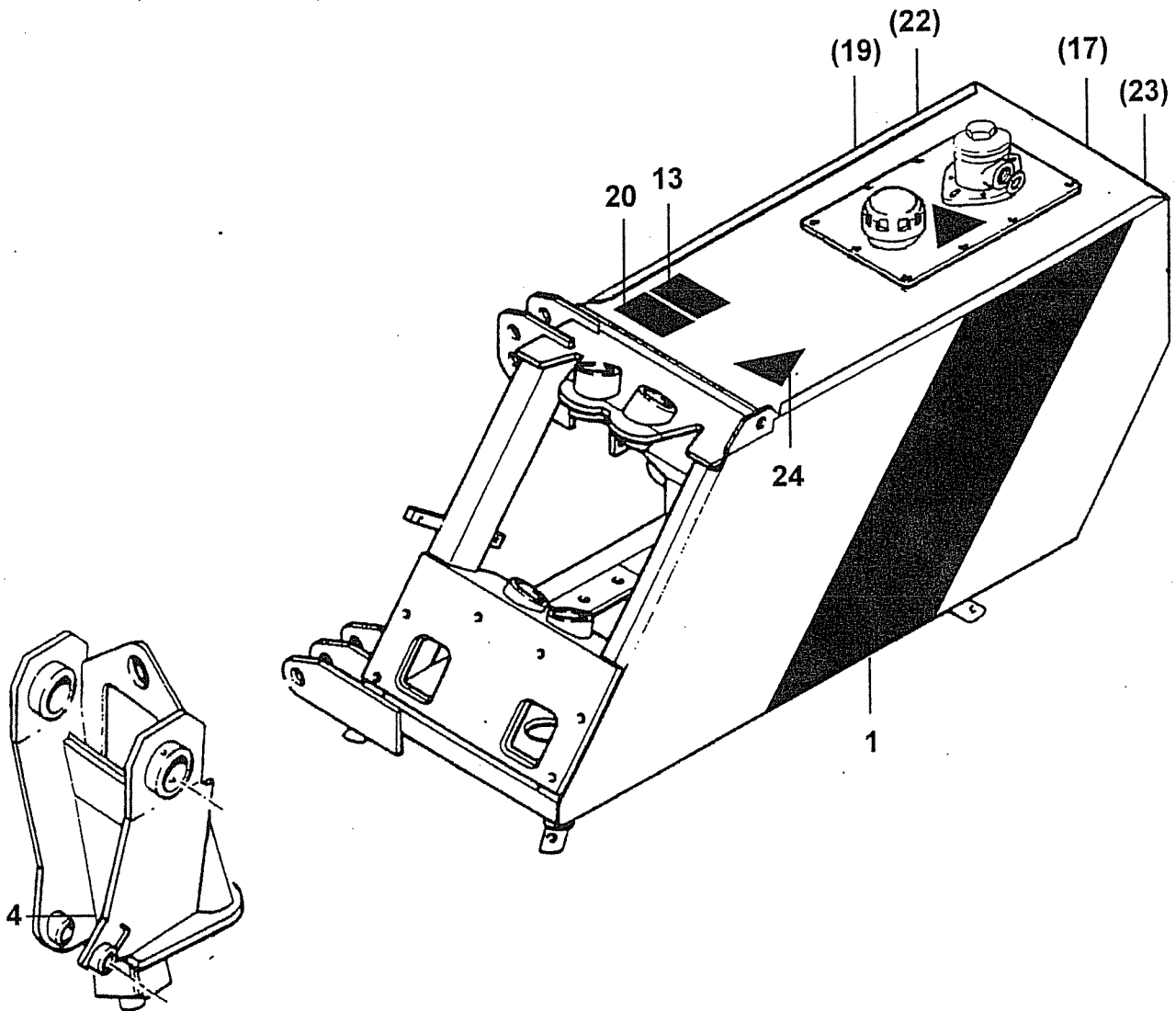
09.821.20



09.821.23

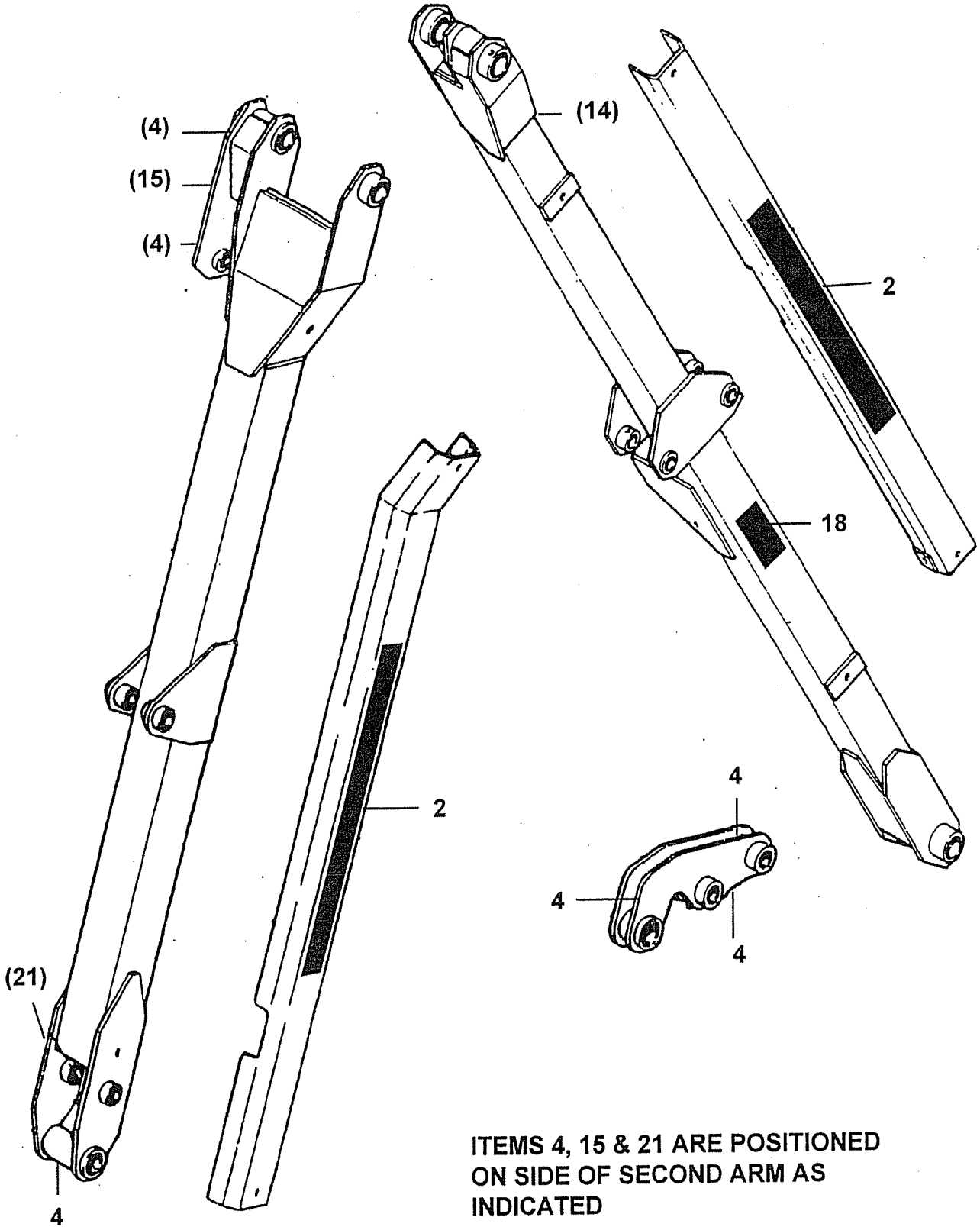
REF	PART NO	DESCRIPTION	QTY
<b>72.081.02/72.082.02 MARKETING DECALS-B578 LH 5843</b>			
01	08.043.26	DECAL - BOMFORD RH	1
01	08.043.25	DECAL - BOMFORD BASE LH	1
01	08.043.27	DECAL - B578	1
02	09.837.01	DECAL - BOMFORD	2
03	09.843.04	DECAL - LIFT POINT 750 KG	2
04	09.810.01	DECAL-GREASE (8 HOURS)	10
<b>74.912.01 ENGINEERING DECALS 4810</b>			
10	08.632.01	DECAL - TRANSPORT	1
11	09.030.01	DECAL - OIL FILTER	1
12	09.811.01	DECAL - MAX PTO SPEED 540	0
12	09.811.04	DECAL - MAX PTO SPEED 540 ACW	1
13	09.821.01	DECAL - READ INSTRUCTION BOOK	1
14	09.821.02	DECAL - STAY CLEAR O'HD CABLES	1
15	09.821.03	DECAL - DON'T STAND UNDER ARMS	1
16	09.821.07	DECAL - RESIDUAL PRESSURE	1
17	09.821.09	DECAL - HOT SURFACE	1
18	09.821.10	DECAL - KEEP NUTS TIGHT	1
19	09.821.16	DECAL - KEEP OUT ZONE	1
20	09.821.20	DECAL - SHAFT ENTANGLEMENT	1
21	09.821.23	DECAL - PINCH POINT	1
22	09.845.01	DECAL - APPROVED OILS	1
23	09.846.01	DECAL - OIL FILTER CHANGE	1
24	09.570.01	DECAL - TANK FULL OF OIL	1

ITEMS 19, 22, 17 & 23 ARE POSITIONED  
ON THE TOP EDGE ON THE SIDES OF  
THE TANK AS INDICATED



REF	PART NO	DESCRIPTION	QTY
<b>72.081.02/72.082.02 MARKETING DECALS-B578 LH 5843</b>			
01	08.043.26	DECAL - BOMFORD RH	1
01	08.043.25	DECAL - BOMFORD BASE LH	1
01	08.043.27	DECAL - B578	1
02	09.837.01	DECAL - BOMFORD	2
03	09.843.04	DECAL - LIFT POINT 750 KG	2
04	09.810.01	DECAL-GREASE (8 HOURS)	10
<b>74.912.01 ENGINEERING DECALS 4810</b>			
10	08.632.01	DECAL - TRANSPORT	1
11	09.030.01	DECAL - OIL FILTER	1
12	09.811.01	DECAL - MAX PTO SPEED 540	0
12	09.811.04	DECAL - MAX PTO SPEED 540 ACW	1
13	09.821.01	DECAL - READ INSTRUCTION BOOK	1
14	09.821.02	DECAL - STAY CLEAR O'HD CABLES	1
15	09.821.03	DECAL - DON'T STAND UNDER ARMS	1
16	09.821.07	DECAL - RESIDUAL PRESSURE	1
17	09.821.09	DECAL - HOT SURFACE	1
18	09.821.10	DECAL - KEEP NUTS TIGHT	1
19	09.821.16	DECAL - KEEP OUT ZONE	1
20	09.821.20	DECAL - SHAFT ENTANGLEMENT	1
21	09.821.23	DECAL - PINCH POINT	1
22	09.845.01	DECAL - APPROVED OILS	1
23	09.846.01	DECAL - OIL FILTER CHANGE	1
24	09.570.01	DECAL - TANK FULL OF OIL	1

ITEM 14 POSITIONED ON TOP  
OF FIRST ARM AS INDICATED



ITEMS 4, 15 & 21 ARE POSITIONED  
ON SIDE OF SECOND ARM AS  
INDICATED

REF	PART NO	DESCRIPTION	QTY
<b>72.081.02/72.082.02 MARKETING DECALS-B578 LH 5843</b>			
01	08.043.26	DECAL - BOMFORD RH	1
01	08.043.25	DECAL - BOMFORD BASE LH	1
01	08.043.27	DECAL - B578	1
02	09.837.01	DECAL - BOMFORD	2
03	09.843.04	DECAL - LIFT POINT 750 KG	2
04	09.810.01	DECAL-GREASE (8 HOURS)	10
<b>74.912.01 ENGINEERING DECALS 4810</b>			
10	08.632.01	DECAL - TRANSPORT	1
11	09.030.01	DECAL - OIL FILTER	1
12	09.811.01	DECAL - MAX PTO SPEED 540	0
12	09.811.04	DECAL - MAX PTO SPEED 540 ACW	1
13	09.821.01	DECAL - READ INSTRUCTION BOOK	1
14	09.821.02	DECAL - STAY CLEAR O'HD CABLES	1
15	09.821.03	DECAL - DON'T STAND UNDER ARMS	1
16	09.821.07	DECAL - RESIDUAL PRESSURE	1
17	09.821.09	DECAL - HOT SURFACE	1
18	09.821.10	DECAL - KEEP NUTS TIGHT	1
19	09.821.16	DECAL - KEEP OUT ZONE	1
20	09.821.20	DECAL - SHAFT ENTANGLEMENT	1
21	09.821.23	DECAL - PINCH POINT	1
22	09.845.01	DECAL - APPROVED OILS	1
23	09.846.01	DECAL - OIL FILTER CHANGE	1
24	09.570.01	DECAL - TANK FULL OF OIL	1