

PM 6014

# 2000 HD Cutting head

PARTS MANUAL  
ISSUE 1

**IMPORTANT**

Note here the serial number of your machine and always quote it in any communication with us or your dealer. This is particularly important when ordering spares. Remember to include all numbers and letters.

Machine serial numbers \_\_\_\_\_

The information given throughout this manual is correct at the time of publication. However, in the course of constant development of bomford turner machines, changes in specification are inevitable. Should you find the information given in this book to be at variance with the machine in your possession, you are advised to contact the bomford turner service department where up-to-date information will be provided.

The manual can contain standard and optional features and is not to be used as a machine specification.

The machine has been tested and is considered safe if carefully used. Ensure your operator is properly trained in its use and maintenance.

---

**IMPORTANT**

Notez ici les numeros de serie de votre machine et mentionnez les dans toute communication avec nos services ou votre revendeur. Ceci est important pour la commande de pieces detachees. Pensez a noter tous les numeros et toutes les letters.

numeros de serie de la machine \_\_\_\_\_

Les informations donnees dans ce manuel sont correctes cependant, du fait de developpement constant des machines bomford turner.

Changements dans les caracteristiques sont inevitables.

Si vous trouvez que les informations donnees ne correspondent pas a votre machine veuillez contacter le service des reparations ou des informations plus recentes vous seront donnees.

Ce manuel peut montrer des caracteristiques optionnelles et ne peut pas etre considere comme specification de la machine.

Cette machine a ete testee, et elle est consideree comme fiable a condition d'une bonne utilisation. Assurez-vous que votre operateur est qualifie en ce qui concerne l'utilisation de la machine ainsi que son entretien.

---

**WICHTIG**

Tragen sie hier die seriennummern ihrer maschine ein und geben sie diese immer an, wenn sie sich an uns oder ihren händler wenden. Das ist besonders bei ersatzteilbestellungen wichtig. Vergessen sie nicht, alle zahlen und buchstaben zu notieren.

Seriennummern der maschine \_\_\_\_\_

Die angaben indiesem handbuch sind bei veröffentliching korrekt. Aufgrund der konstanten weiterentwicklung von bomford turner maschinen sind jedochänderugden in der spezifikation unvermeidlich. Wenn die information in diesem handbuch nicht mit ihrer maschine übereinstimmen, nehmen sie bitte kontakt mit der bomford turner kundendienstabteilung auf, die ihnen gerne die aktuellen information zukommen lässt. Das handbuch kann sowohl beschreibungen für die standard ausführung als auch für zubehör enthalten und ist nicht als maschinenspezifikation zu verwendet.

Die maschine ist getestet und bei sachgemäßem betrieb als sicher befunden worden. Sorgen sie dafür, dass ihr bedienpersonal in anwendung und wartung richtig geschult wird.

## 2000 HD Cutting Head

Page illustration numbers shown are used only for reference purposes and should not be used for ordering spare parts. Please ensure the correct part number and description is given when ordering spare parts.

### CONTENTS LIST

Page No.	DESCRIPTION
3	Contents List
4	72.855.01 Decals - Head 4401
6	76.021.04 - Rotor Shaft assembly
6	76.118.01 - 8981 Bearing assembly 4534
8	76.117.01 - Cowl assembly 2000 4934
8	76.155.01 - Roller assembly 2000 4934
10	76.152.02 Motor, pulley and belt assembly 10251

#### **IMPORTANT**

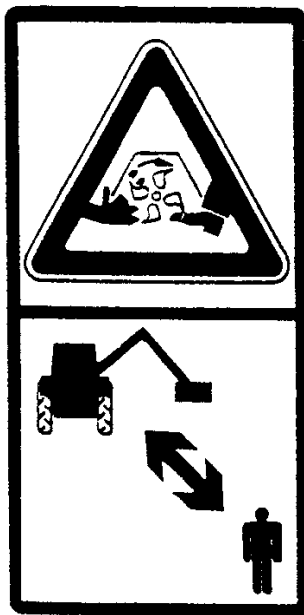
**THIS MACHINE IS FOR VEGETATION CONTROL AND MUST NOT BE USED FOR ANY OTHER PURPOSE**

**IT IS POTENTIALLY HAZARDOUS TO FIT OR USE ANY PARTS OTHER THAN GENUINE BOMFORD TURNER PARTS**

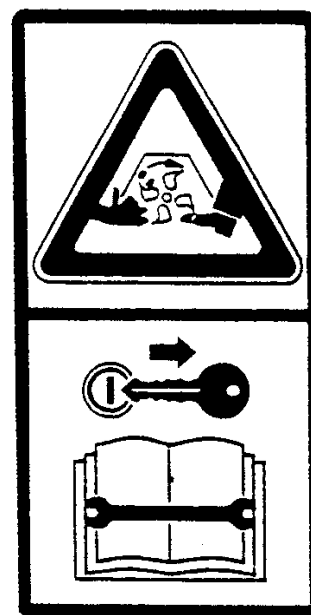
**THE COMPANY DISCLAIMS ALL LIABILITY FOR THE CONSEQUENCES OF SUCH USE WHICH, IN ADDITION, VOIDS THE MACHINE WARRANTY**



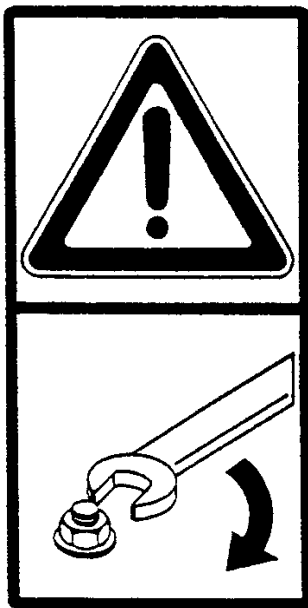
09.821.04



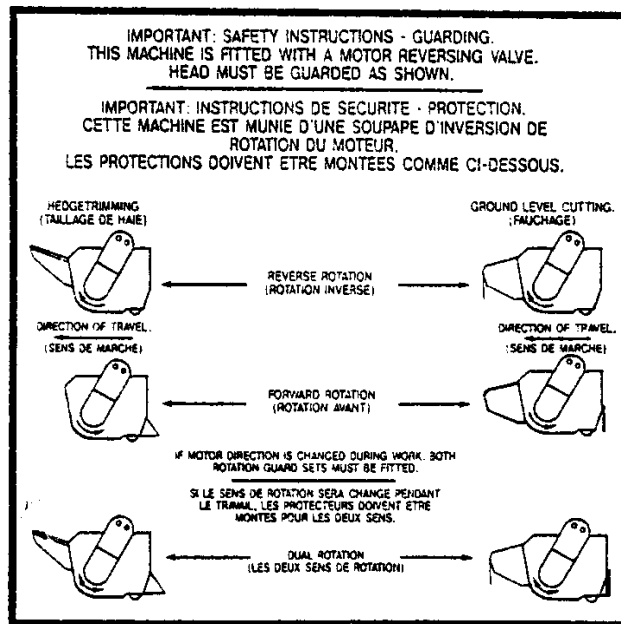
09.821.05



09.821.08



09.821.10



41.054.01



09.843.02

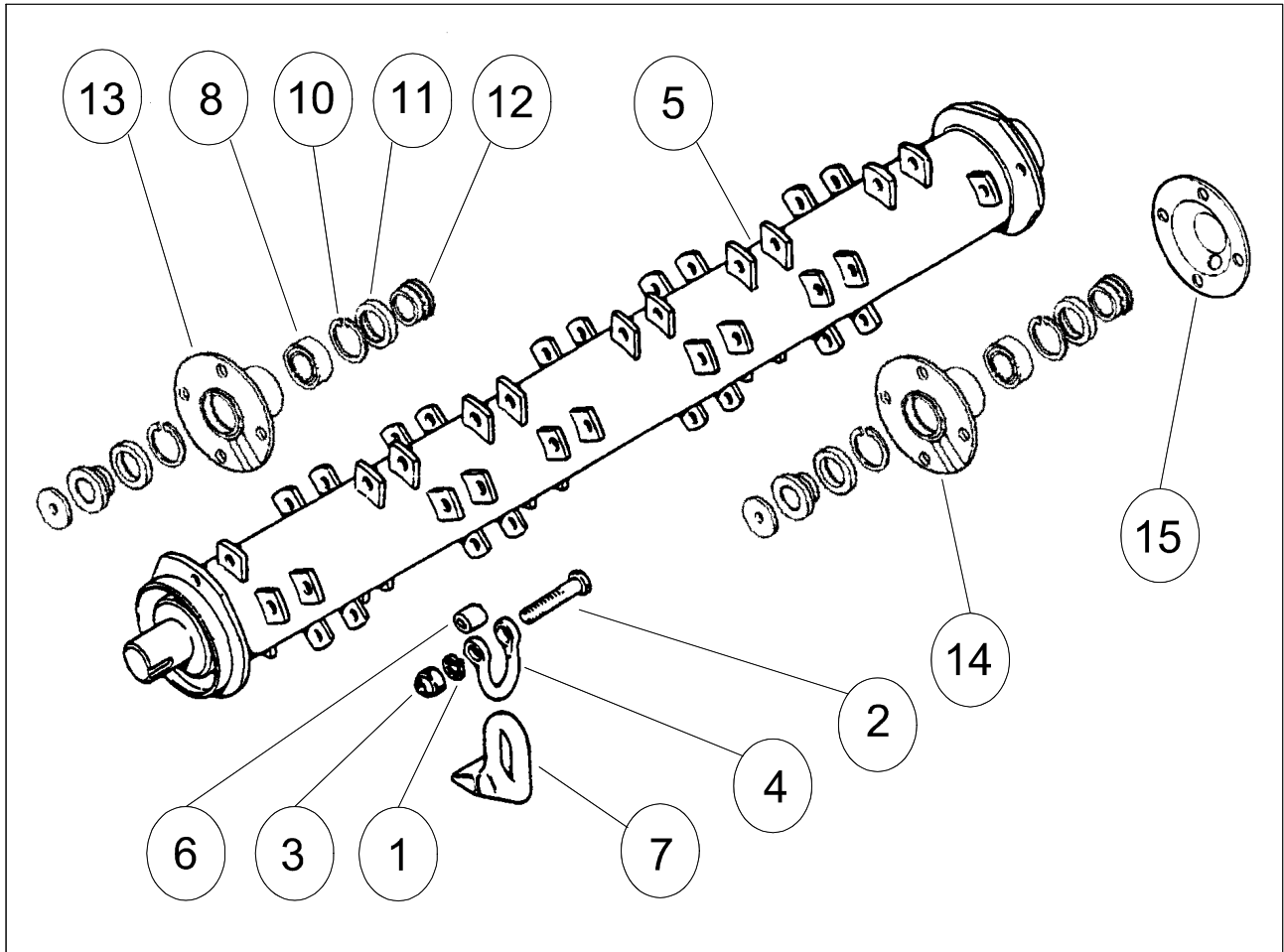


09.810.02

**72.855.01 Decals - Head 4401**

PART NUMBER	DESCRIPTION	No. OFF
09.810.02	DECAL-GREASE (40 HOURS) ORDER 5000 CALL OFF CAN RANGE FROM 09.810.01 - 05	4
09.821.04	DECAL - DANGER THROWN DEBRIS	1
09.821.05	DECAL - CUTTING HEAD DANGER	1
09.821.08	DECAL - SAFEWORKING ON HEAD	1
09.821.10	DECAL - KEEP NUTS TIGHT	1
09.837.01	DECAL - BOMFORD	1
09.843.02	DECAL - LIFT POINT 350 KG	2
41.054.01	DECAL - HEAD GUARDING	1

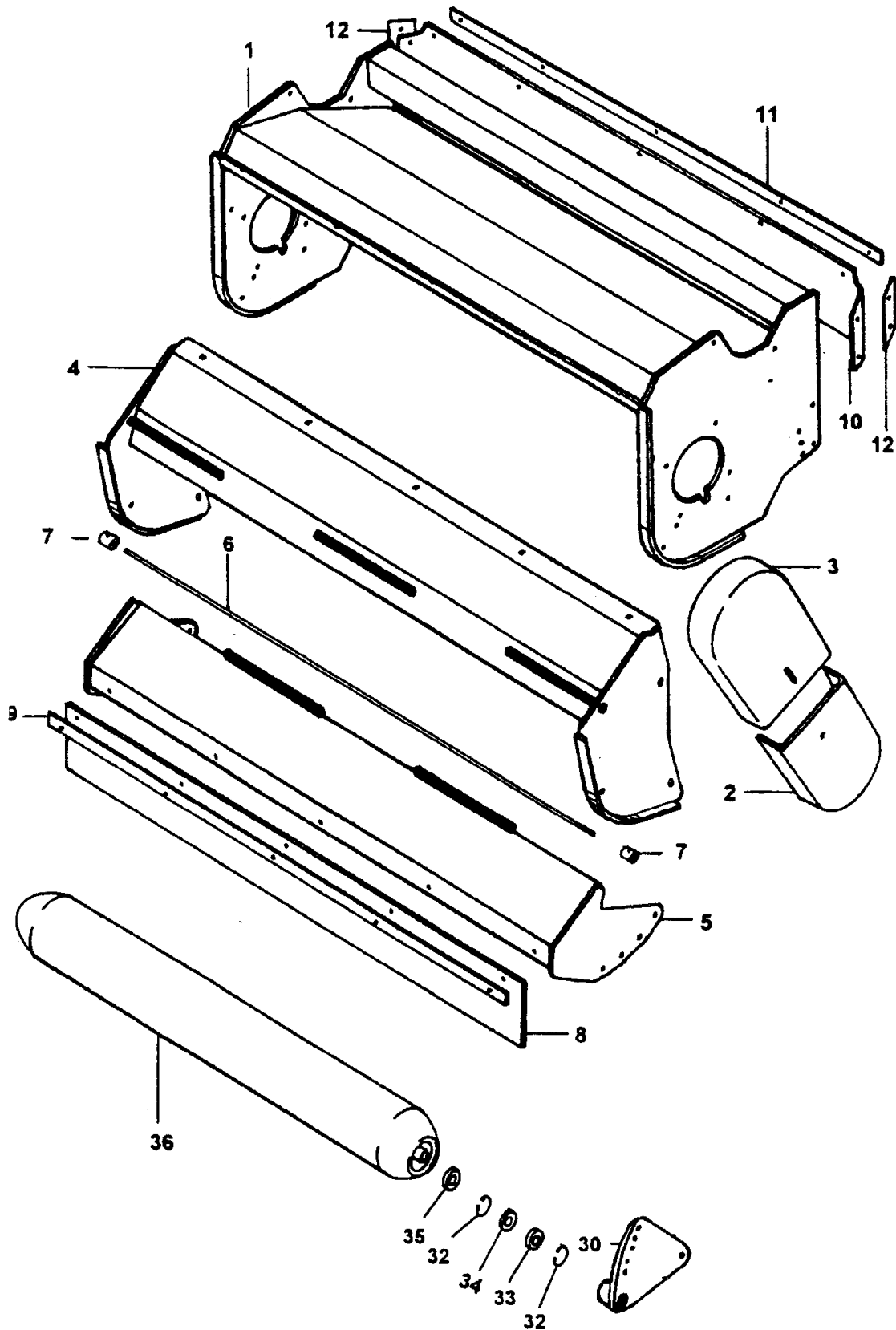
76.021.04 - Rotor Shaft assembly & 76.118.01 - 8981 Bearing assembly 4534



**76.021.04 - Rotor Shaft assembly & 76.118.01 - 8981 Bearing assembly 4534**

ITEM No.	PART NUMBER	DESCRIPTION	No. OFF
	76.021.04	<b>Rotor Shaft assembly</b>	
	41329.04	ROTOR SHAFT 4129901/4275001CW	
1	05.282.08	SPRING WASHER 14MM P	1 per flail
2	05.775.10	BOLT – SPECIAL M14 X	1 per flail
3	05.968.06	S.LOCKING NUT M14 (F	1 per flail
4	09.518.01	SHACKLE - LONG	1 per flail
5	41.299.01	SHAFT TUBULAR - 2000	1
6	41725.01	SPACER 1" O/D X 16	1 per flail
7	4275.01	FLAIL – FORGED MP44	1 per flail
	76.118.01	<b>8981 Bearing assembly 4534</b>	
8	04.163.04	BEARING-SPH.ROLLER 45MM BORE NSKR REF 22209EJW33+11 SKF REF 22209CC/W33	2
9	04.252.01	8MM THICK WASHER 65 OD X 17 ID	2
	05.264.23	SETSCREW M12 X 30MM PLATED*	4
	05.264.24	SETSCREW M12 X 35MM PLATED*	4
	05.264.33	SETSCREW M16 X 30MM PLATED	2
	05.282.03	SPRING WASHER 12MM PLATED*	8
	05.283.04	SHAKEPROOF WASHER 16MM PLATED	2
	05.286.03	NUT M12 PLATED*	10
	05.953.03	GREASE NIPPLE M10* WEST06 REF: 70027	2
10	05.959.07	CIRCLIP - INT 85MM DIA	4
11	06.909.01	SPACER-SEAL *****	4
12	06.910.01	COLLAR-SEAL	4
	09.585.01	BOLT - ADJUSTING M12 X 110 - HT SET SCREW (BZP)	1
13	41456.01	BEARING HOUSING DRIVE	1
14	41457.01	BEARING HOUSING NON DRIVE	1
15	41461.01	GUARD NON DRIVE	1
	43242.01	ASSY INST 04.163.04 BEARING SPH ROLLER 45MM BORE	

76.117.01 - Cowl assembly 2000 4934 & 76.155.01 - Roller assembly 2000 4934

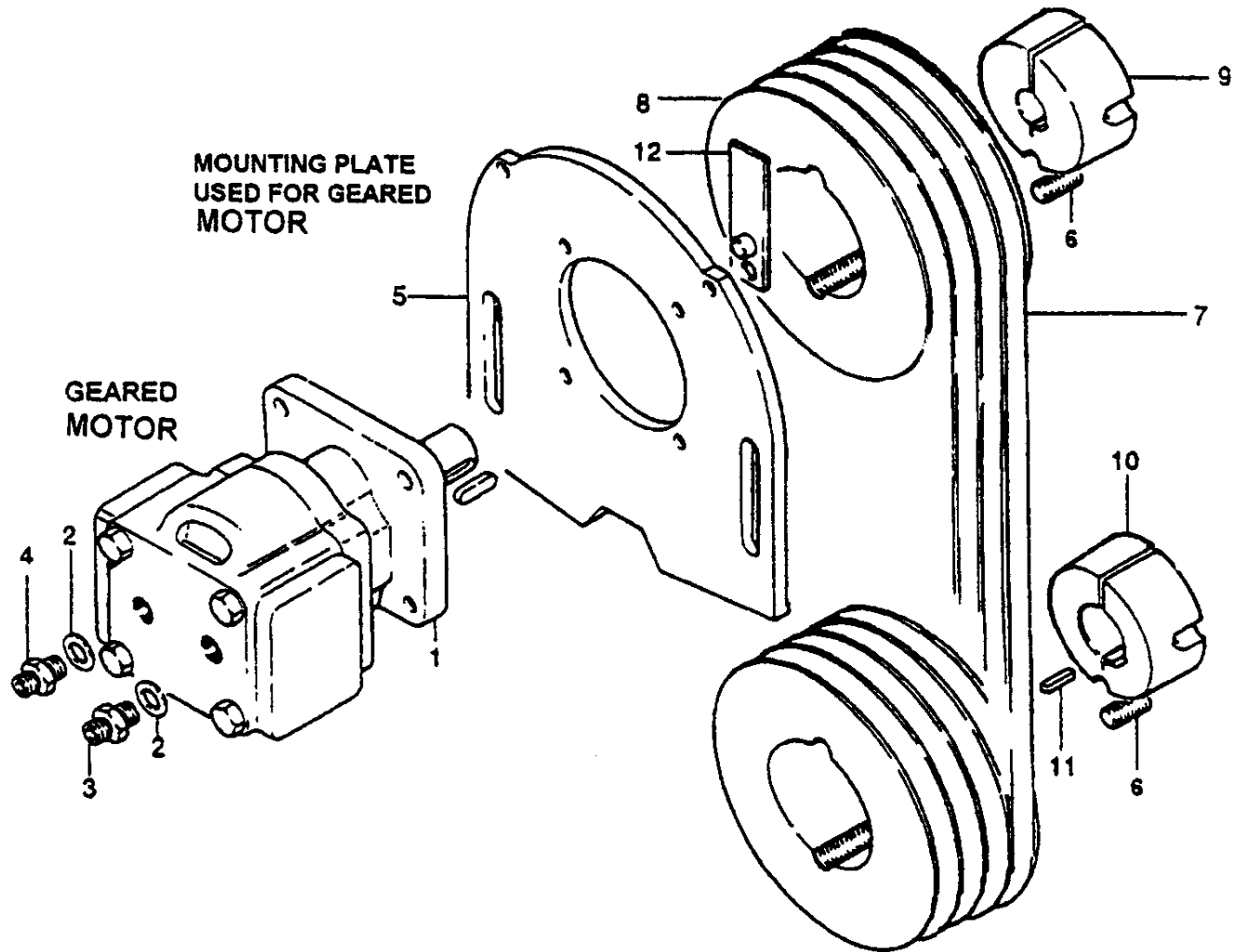




**76.117.01 - Cowl assembly 2000 4934 & 76.155.01 - Roller assembly 2000 4934**

ITEM No.	PART NUMBER	DESCRIPTION	No. OFF
	<b>76.117.01</b>	<b>Cowl assembly 2000 4934</b>	
	05.201.17	TENSION PIN 3MM X 25MM PLATED MBQ 1000 OFF	2
	05.227.01	HAMMER DRIVE SCREW NO.6X3/8"* SAME AS T0460	2
	05.264.21	SETSCREW M12 X 20MM PLATED*	3
	05.264.23	SETSCREW M12 X 30MM PLATED*	10
	05.264.24	SETSCREW M12 X 35MM PLATED*	6
	05.281.03	FLAT WASHER 12MM PLATED*	5
	05.281.04	FLAT WASHER 16MM PLATED*	8
	05.282.03	SPRING WASHER 12MM PLATED*	20
	05.286.03	NUT M12 PLATED*	17
	05.287.01	SELF-LOCKING NUT M8 PLATED*	16
	05.287.02	SELF-LOCKING NUT M10 PLATED* (McCONNEL PART 9143005)	8
	05.774.07	SERIAL NO. PLATE BOMFORDTURNER WITH WEIGHT FIELD	1
	05.839.24	BOLT CUP SQ M10 X 50 (PLATED) GRADE 8.8	8
3	09.589.01	GUARD - TOP DRIVE	1
2	09.590.01	GUARD - BOTTOM DRIVE	1
8	41.063.01	GUARD - FLEXIBLE 2000	1
9 & 11	41.237.01	BACKING STRIP	2
12	41418.01	CLAMP - GUARD	2
7	41436.01	SPACER 3/4"DIA - 12MM SPACER-PIVOT FRONT GUARD	2
6	41444.01	PIN-PIVOT 12 DIA - 2151MM PIN-PIVOT FRT GUARD	1
1	41445.01	COWL 2000HD	1
10	41452.01	GUARD - FLEXIBLE 2000	1
4	41453.01	GUARD FRT FIXED 2000	1
5	41454.01	GUARD FRT ADJ 2000	1
	9293054	BOLT CUP SQUARE M8X25 (PLATE) D.I.N STANDARD	16
	76.115.01	<b>Roller assembly 2000 4934</b>	
35	04.164.04	SEAL-LIP 40DIA X 10MM	2
	05.234.01	WASHER 44.5 X 13 X 5MM PLATED	2
	05.282.03	SPRING WASHER 12MM PLATED*	2
	05.625.10	SKT CAPSCRW M12X30DOME HD PLT*	2
	05.953.01	GREASE NIPPLE M6* WEST06 REF0: 70018 (STANDARD)	4
32	05.959.05	CIRCLIP - INT 62MM DIA	4
	09.898.01	BRACKET - ROLLER 150 LH	1
30	09.898.02	BRACKET - ROLLER 150 RH	1
33	41851.01	CAP - BEARING RETAINER *****	2
34	42954.01	BEARING - D/ROW BALL 30MM BORE 1206 TNH - OPEN TYPE POLYAMIDE CAGE	2
36	42955.07	ROLLER 6" DIA - 2000	1

76.152.02 Motor, pulley and belt assembly 10251



**76.152.02 Motor, pulley and belt assembly 10251**

ITEM No.	PART NUMBER	DESCRIPTION	No. OFF
	01.071.13	KEY-SEP 1/4"X1/4"X1"	
8*	03.795.02	PULLEY-VEE 180MM PCD X 3SPA	1
8*	03.795.13	PULLEY - VEE 200MM PCD X 3SPA	1
6	04.282.56	STUD M10 X 37MM	2
	05.281.03	FLAT WASHER 12MM PLATED*	2
	05.282.02	SPRING WASHER 10MM PLATED*	2
	05.282.03	SPRING WASHER 12MM PLATED*	2
	05.286.02	NUT M10 PLATED*	2
	05.286.03	NUT M12 PLATED*	2
2	05.290.06	BONDED SEAL 3/4"BSP *	2
7	05.299.53	BELT XPA 1320 QUAD II GATES	3
3 & 4	05.373.01	ADAPTOR 3/4"BSP X 1"BSP	2
9	05.424.07	TAPER-LOCK 1"BORE (2517)	1
10	05.424.18	TAPER LOCK 40MM (2517) SAME AS McC 7290016 2517 X 40 BORE	1
	05.625.12	SOCKET DOMED SCREW M12X35 PLT* GRADE 10.9	2
11	05.960.16	KEY-S/REP 12MM X 8MM X 40MM	1
12	09.587.01	PLATE - COVER	1
5	09.667.01	PLATE - MOTOR MOUNTING	1
	09.773.02	SEAL KIT FOR 09.773 MOTOR 8782-023-PIV ULTR01	
1	09.773.07	HYDRAULIC MOTOR 2TR050 ULTRA REF 9473U	1
	41905.02	DECAL - 125	1

Note \*: Belts are interchangeable for two speeds